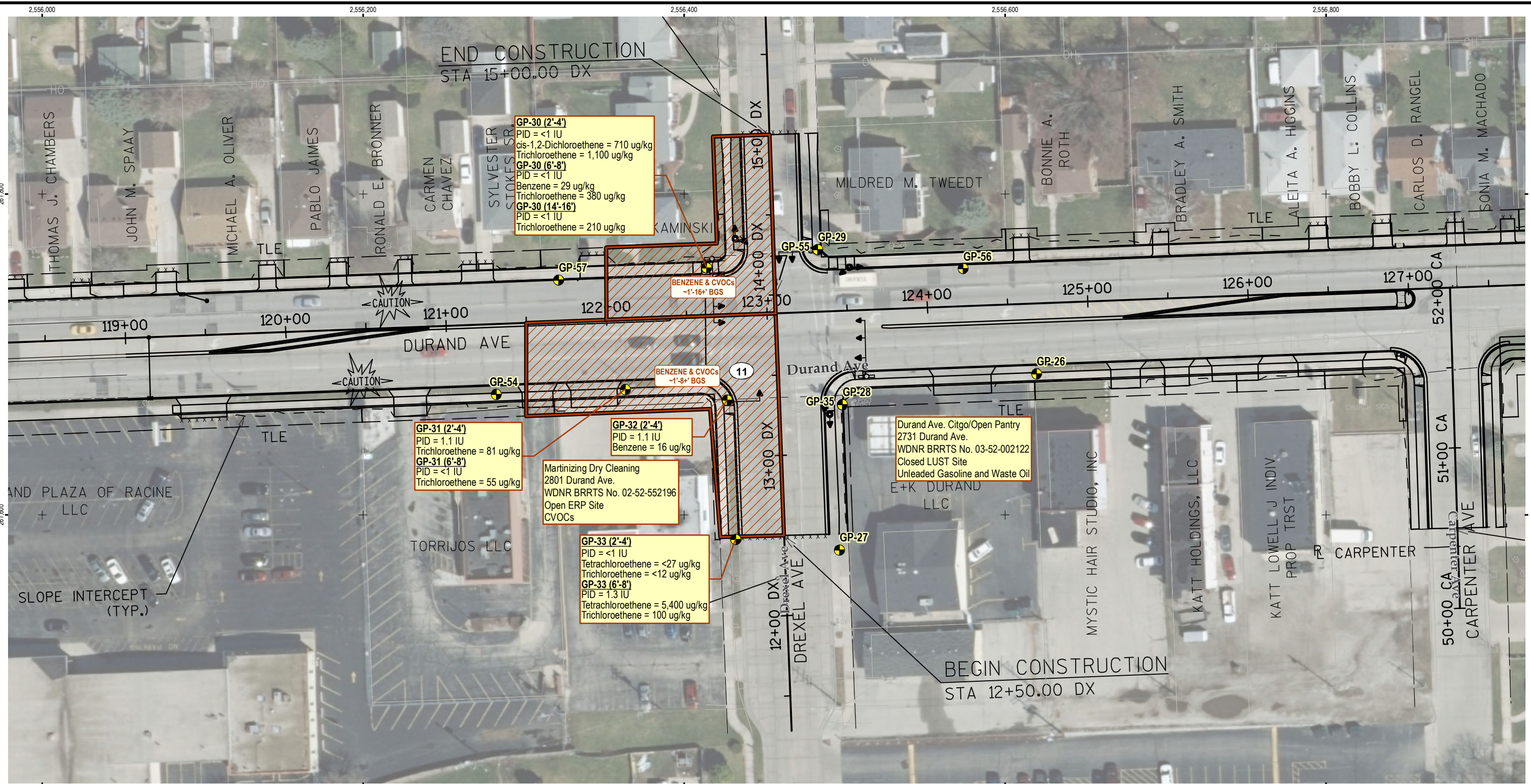




TRC - GIS
 Coordinate System: NAD 1983 StatePlane Wisconsin South FIPS 4803 Feet (Foot US)
 Map Rotation: 0
 Plot Date: 10/16/2017 14:54:41 PM by RSUEMNICHT -- LAYOUT: ANSIB(11x17)
 Path: E:\WI_DOT\2017_275788\275788-002mb.mxd

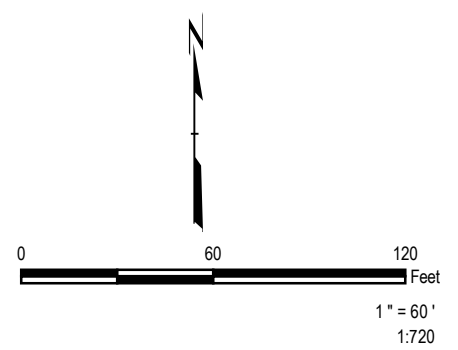



LEGEND

-  SOIL BORING LOCATION
-  CONTAMINATED AREAS

NOTES

1. BASE MAP IMAGERY FROM RACINE COUNTY LAND INFORMATION OFFICE, 2015.
2. MAP PROJECTION AND GRID COORDINATES ARE NAD83 STATE PLANE WISCONSIN-SOUTH (US SURVEY FEET).
3. CONSTRUCTION PLANS PROVIDED BY WisDOT, LOCATIONS ARE APPROXIMATE.



PROJECT: WISDOT ID# 2260-07-00	
DURAND AVE. (STH 11), KENTUCKY ST. TO KEARNEY AVE. RACINE AND MT. PLEASANT, RACINE COUNTY, WISCONSIN	
TITLE: SOIL BORING LOCATIONS STATION 119+00 TO 127+00	
DRAWN BY: R SUEMNICHT	PROJ NO.: 275788
CHECKED BY: B BERGMANN	
APPROVED BY: D HAAK	
DATE: OCTOBER 2017	FIGURE 5
	
708 Heartland Trail, Suite 3000 Madison, WI 53717 Phone: 608.826.3600 www.trcsolutions.com	
FILE NO.:	275788-002mb.mxd