

From: Beggs, Tauren R - DNR
Sent: Friday, August 17, 2018 1:16 PM
To: 'Nicole L. LaPlant'
Cc: Cody Applekamp
Subject: RE: Jagemann Plating - BRRTS #02-36-555544

Hi Nicole,

I concur with the B and C locations for the initial sub-slab evaluation of the building.

Regards,

We are committed to service excellence.

Visit our survey at <http://dnr.wi.gov/customersurvey> to evaluate how I did.

Tauren R. Beggs

Phone: (920) 662-5178

Tauren.Beggs@wisconsin.gov

From: Nicole L. LaPlant <nlaplant@releeinc.com>
Sent: Thursday, August 16, 2018 10:01 AM
To: Beggs, Tauren R - DNR <Tauren.Beggs@wisconsin.gov>
Cc: Cody Applekamp <capplekamp@releeinc.com>
Subject: Jagemann Plating - BRRTS #02-36-555544

Hi Tauren,

We installed the two monitoring wells yesterday, and picked out 5 location options in the 1332 S. 26th Street building for sub-slab sampling (see attached map). In our last correspondence, we indicated we would forward the sub-slab sample locations prior to installation/review.

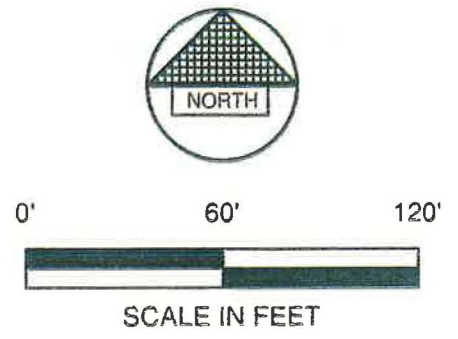
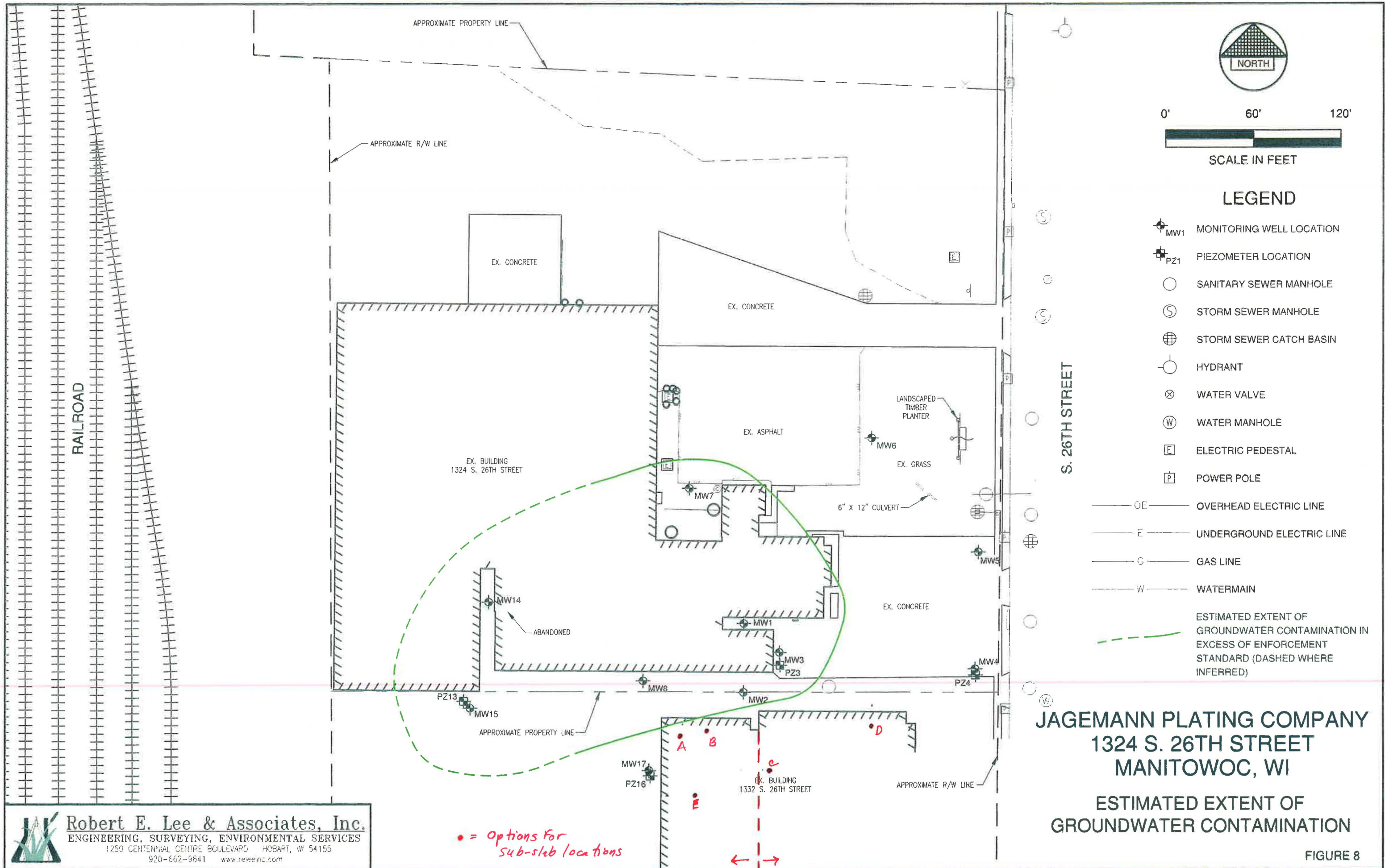
The current approved plan is to collect two sub-slabs at this time. We recommend locations B and C right now. This will allow us to evaluate the sub-slab conditions in each portion of the building. Based on our observations, it appears that there was two phases of building construction. Let me know if you concur with our proposed locations. We are scheduled to start the VI field work next week Tuesday, August 21st.

Thanks,
Nicole



Nicole L. LaPlant | Senior Project Geologist
Robert E. Lee & Associates, Inc.

1250 Centennial Centre Boulevard, Hobart WI 54155
O: [920-662-9641](tel:920-662-9641) | D: 920-544-4459 | M: 920-621-2695
nlaplant@releeinc.com www.releeinc.com



LEGEND

- MW1 MONITORING WELL LOCATION
- PZ1 PIEZOMETER LOCATION
- SANITARY SEWER MANHOLE
- STORM SEWER MANHOLE
- STORM SEWER CATCH BASIN
- HYDRANT
- WATER VALVE
- WATER MANHOLE
- ELECTRIC PEDESTAL
- POWER POLE
- OE OVERHEAD ELECTRIC LINE
- E UNDERGROUND ELECTRIC LINE
- G GAS LINE
- W WATERMAIN
- ESTIMATED EXTENT OF GROUNDWATER CONTAMINATION IN EXCESS OF ENFORCEMENT STANDARD (DASHED WHERE INFERRED)

JAGEMANN PLATING COMPANY
1324 S. 26TH STREET
MANITOWOC, WI

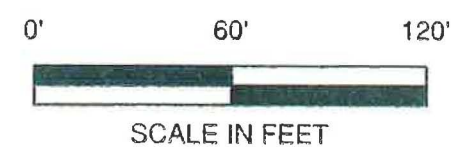
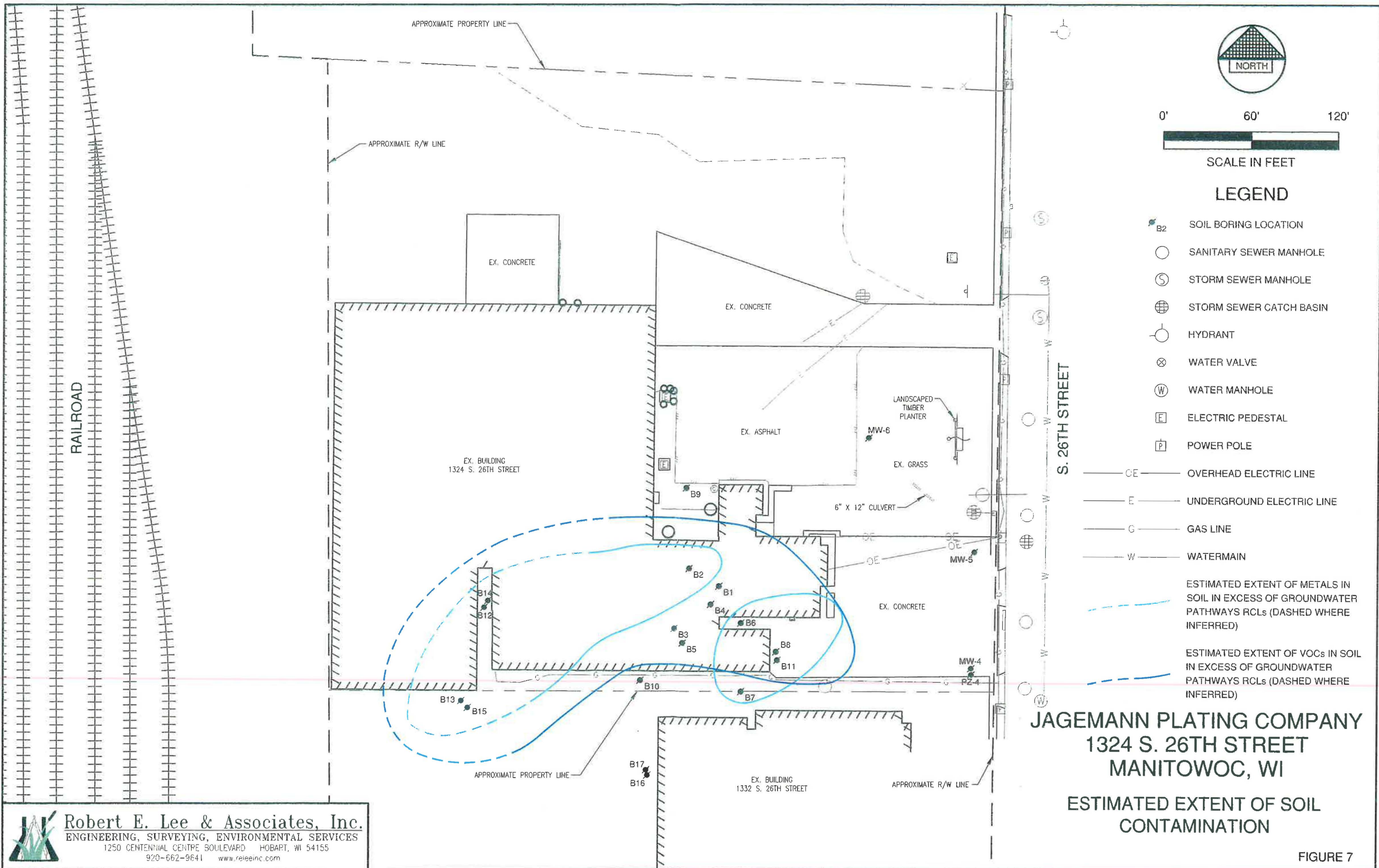
ESTIMATED EXTENT OF GROUNDWATER CONTAMINATION

FIGURE 8

Robert E. Lee & Associates, Inc.
 ENGINEERING, SURVEYING, ENVIRONMENTAL SERVICES
 1250 CENTENNIAL CENTRE BOULEVARD HOBART, WI 54155
 920-662-9641 www.releeinc.com

• = Options for sub-slab locations

← separate slab → we believe



LEGEND

- B2 SOIL BORING LOCATION
- SANITARY SEWER MANHOLE
- STORM SEWER MANHOLE
- STORM SEWER CATCH BASIN
- HYDRANT
- WATER VALVE
- WATER MANHOLE
- ELECTRIC PEDESTAL
- POWER POLE
- OE OVERHEAD ELECTRIC LINE
- E UNDERGROUND ELECTRIC LINE
- G GAS LINE
- W WATERMAIN

ESTIMATED EXTENT OF METALS IN SOIL IN EXCESS OF GROUNDWATER PATHWAYS RCLs (DASHED WHERE INFERRED)

ESTIMATED EXTENT OF VOCs IN SOIL IN EXCESS OF GROUNDWATER PATHWAYS RCLs (DASHED WHERE INFERRED)

JAGEMANN PLATING COMPANY
1324 S. 26TH STREET
MANITOWOC, WI

ESTIMATED EXTENT OF SOIL CONTAMINATION

FIGURE 7

Robert E. Lee & Associates, Inc.
 ENGINEERING, SURVEYING, ENVIRONMENTAL SERVICES
 1250 CENTENNIAL CENTRE BOULEVARD HOBART, WI 54155
 920-662-9641 www.releeinc.com