

From: Nicole L. LaPlant <nlaplant@releeinc.com>
Sent: Friday, January 17, 2020 2:52 PM
To: Beggs, Tauren R - DNR
Subject: FW: 1324 S. 26th Street, Manitowoc - Utility Mapping Informaion
Attachments: S 26th St.pdf; s 26th storm laterals.pdf; s 26th sanitary laterals.pdf



Nicole L. LaPlant - Robert E. Lee & Associates, Inc.
920-662-9641 nlaplant@releeinc.com

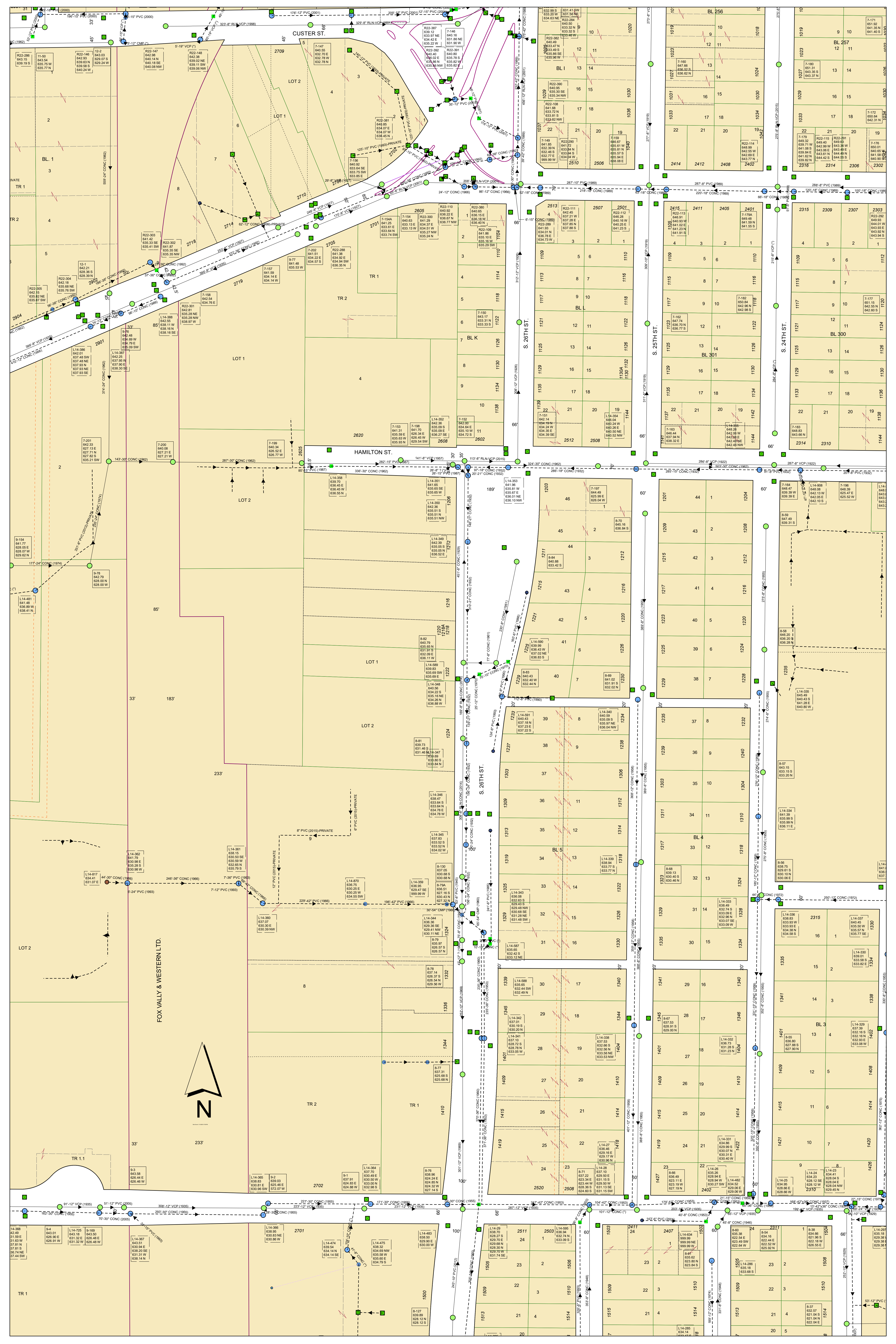
From: Jill Erickson [<mailto:jerickson@manitowoc.org>]
Sent: Wednesday, January 15, 2020 2:42 PM
To: Nicole L. LaPlant
Cc: Mike Zimmer; Greg Minikel
Subject: RE: 1324 S. 26th Street, Manitowoc - Utility Mapping Informaion

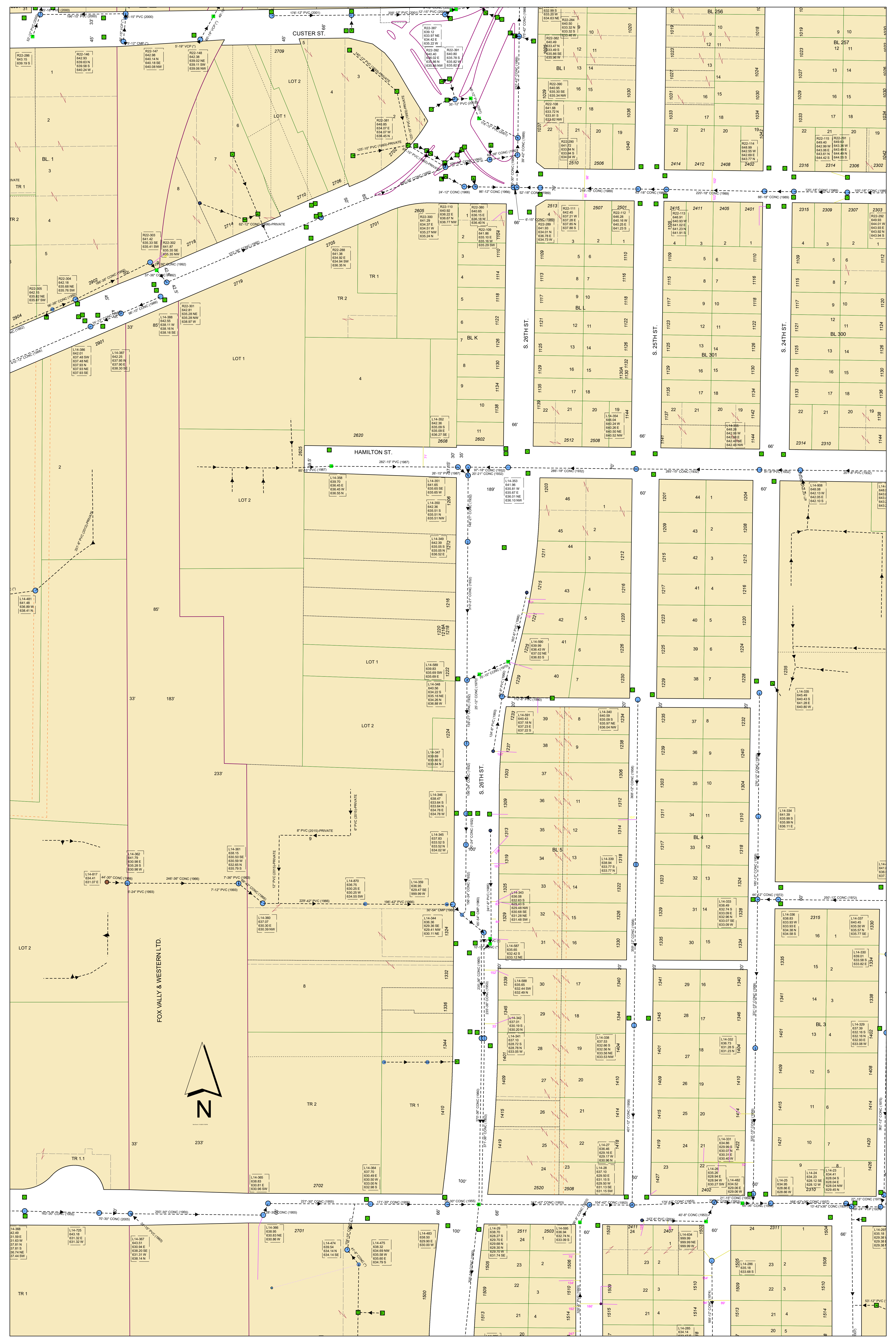
Nicole,

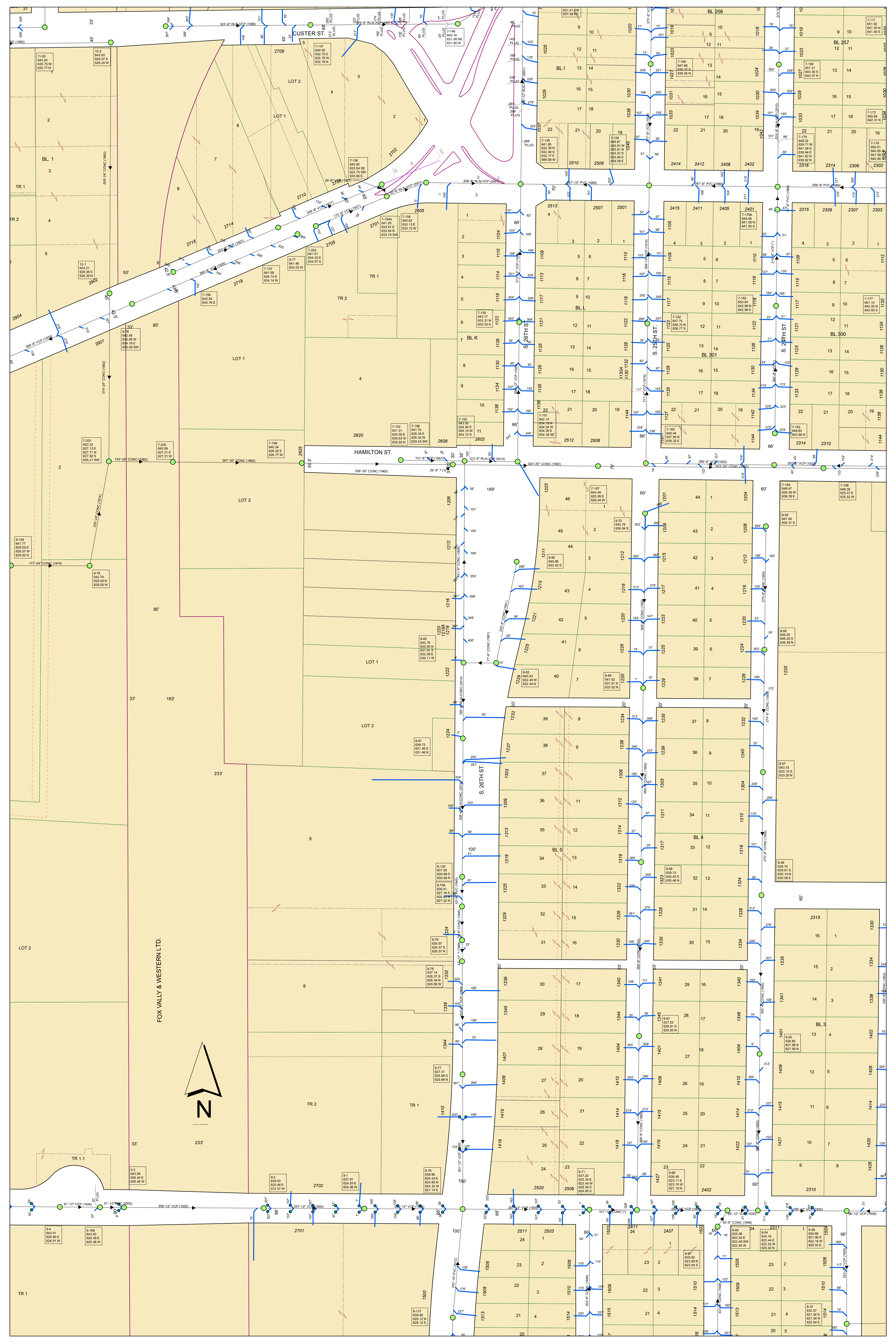
I have attached pdf's of the area, I believe you are looking at. One is both sanitary (solid line work and manhole box information) and storm (dashed line work and manhole box information) sewer on, one is sanitary laterals and the other is storm laterals. I want to verify this area first before I send information. You mentioned you wanted it to overlay your utility maps, can you please get back to us the format in which you would like this information, or the person to talk to about what format works best for your company.

Thanks,

Jill Erickson







FOX VALLEY & WESTERN LTD.

