

SITE LOCATION



SCALE: 1" = 2000'



## LOCATION MAP

U.S. OIL CO., INC. - MILWAUKEE SOUTH TERMINAL  
 9135 NORTH 107TH STREET  
 MILWAUKEE, WISCONSIN

**Endpoint Solutions**

6871 S. Lovers Lane  
 Franklin, WI 53132

Phone: (414) 427-1200

Fax: (414) 427-1259

DRAWN BY: NWD

DATE: 10/01/2020

B.1.a

REVIEWED BY: TCP

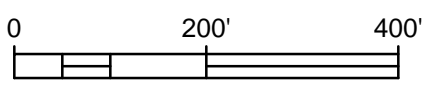
PROJECT NO: 014-002-022

P:\US Venture - 014\002 - Milwaukee South Terminal\cadd\002-022 Closure Figures\Fig B.1.b.1\_014-002-022 Site Overview.dwg



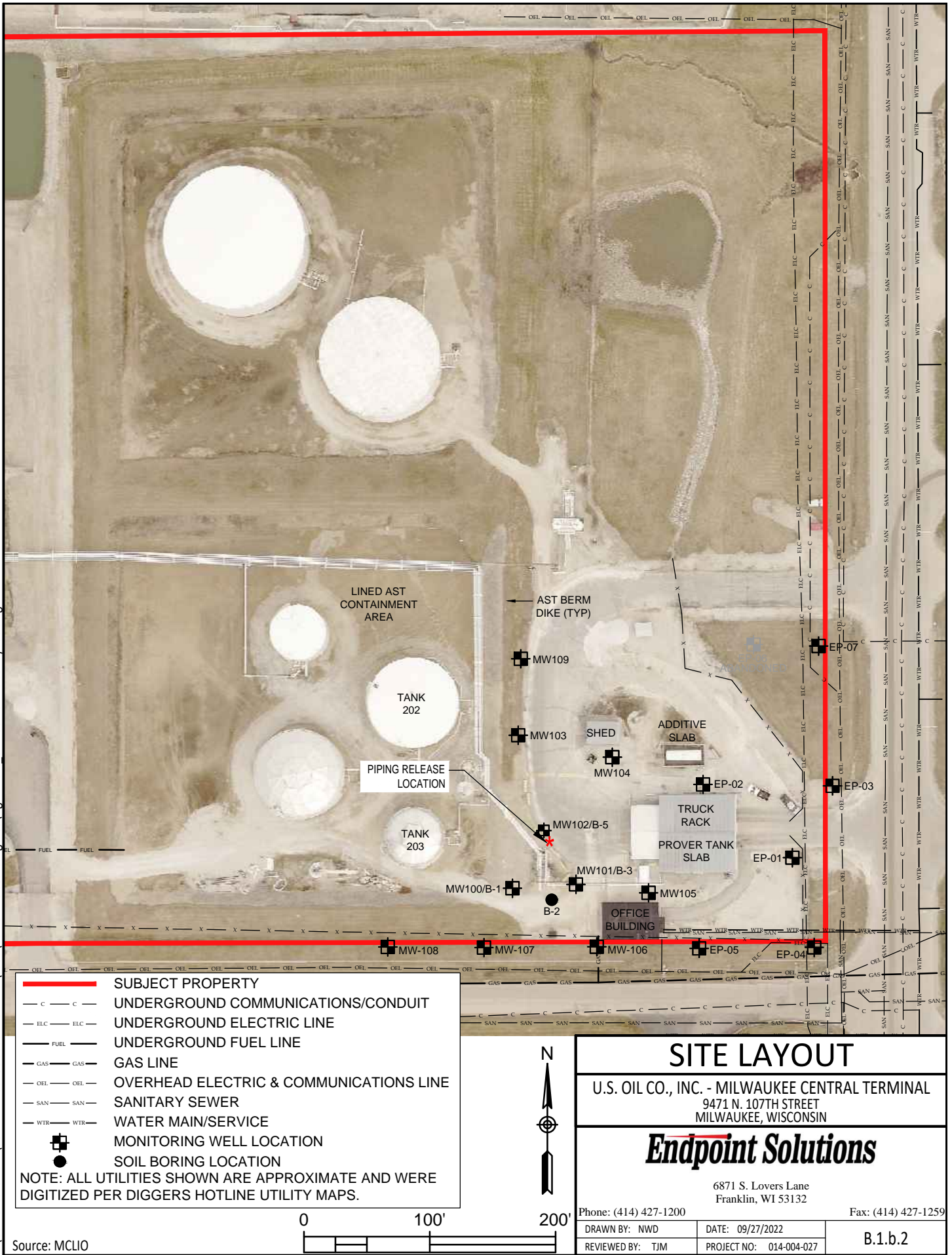
	<b>SUBJECT PROPERTY</b>
	UNDERGROUND COMMUNICATIONS/CONDUIT
	UNDERGROUND ELECTRIC LINE
	UNDERGROUND FUEL LINE
	GAS LINE
	OVERHEAD ELECTRIC & COMMUNICATIONS LINE
	SANITARY SEWER
	WATER MAIN/SERVICE

NOTE: ALL UTILITIES SHOWN ARE APPROXIMATE AND WERE DIGITIZED PER DIGGERS HOTLINE UTILITY MAPS.



<b>SITE OVERVIEW</b>		
U.S. OIL CO., INC. - MILWAUKEE SOUTH TERMINAL 9135 NORTH 107TH STREET MILWAUKEE, WISCONSIN		
<b>Endpoint Solutions</b>		
6871 S. Lovers Lane Franklin, WI 53132		
Phone: (414) 427-1200		Fax: (414) 427-1259
DRAWN BY: NWD	DATE: 09/27/2022	<b>B.1.b.1</b>
REVIEWED BY: TJM	PROJECT NO: 014-002-022	

Source: MCLIO



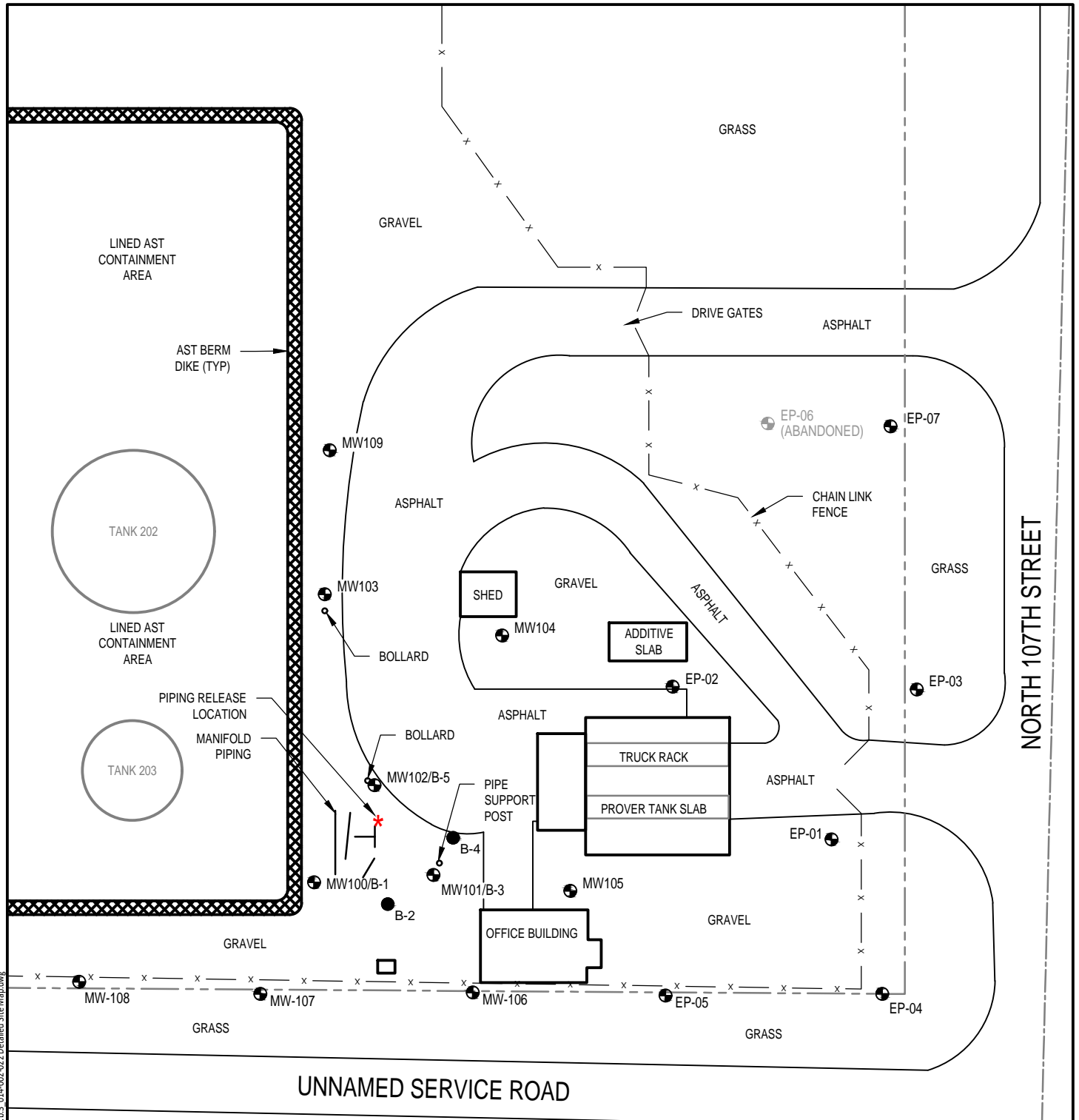
	SUBJECT PROPERTY
	UNDERGROUND COMMUNICATIONS/CONDUIT
	UNDERGROUND ELECTRIC LINE
	UNDERGROUND FUEL LINE
	GAS LINE
	OVERHEAD ELECTRIC & COMMUNICATIONS LINE
	SANITARY SEWER
	WATER MAIN/SERVICE
	MONITORING WELL LOCATION
	SOIL BORING LOCATION
NOTE: ALL UTILITIES SHOWN ARE APPROXIMATE AND WERE DIGITIZED PER DIGGERS HOTLINE UTILITY MAPS.	

**SITE LAYOUT**  
 U.S. OIL CO., INC. - MILWAUKEE CENTRAL TERMINAL  
 9471 N. 107TH STREET  
 MILWAUKEE, WISCONSIN

**Endpoint Solutions**

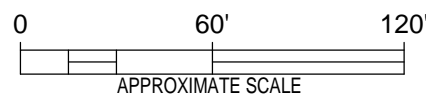
6871 S. Lovers Lane  
 Franklin, WI 53132

Phone: (414) 427-1200		Fax: (414) 427-1259
DRAWN BY: NWD	DATE: 09/27/2022	B.1.b.2
REVIEWED BY: TJM	PROJECT NO: 014-004-027	



P:\US Venture - 014\002 - Milwaukee South Terminal\cadd\002-002 Closure Figures\Fig. B.1.b.3\_014-002-002 Detailed Site Map.dwg

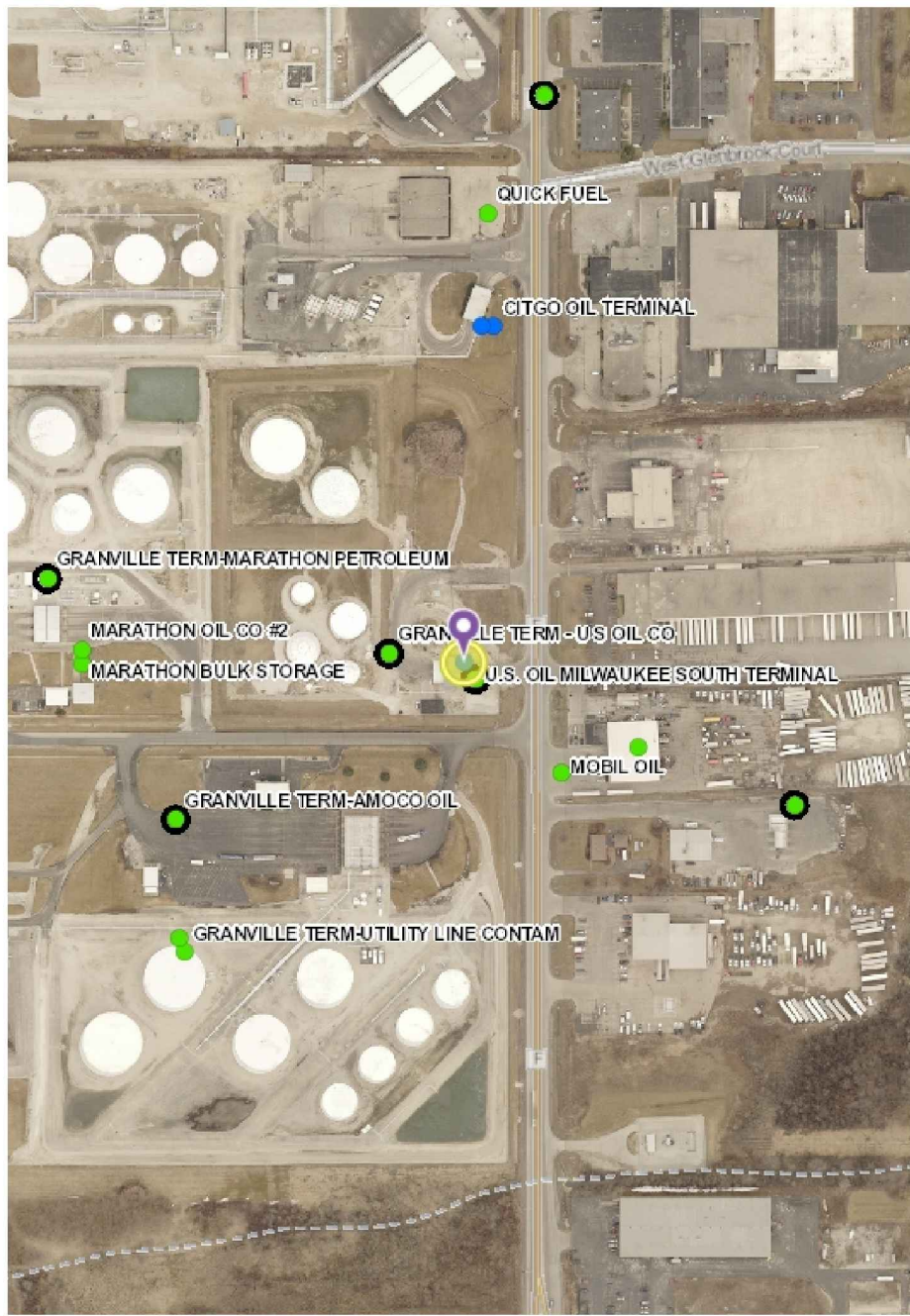
	PROPERTY LINE
	FENCE
	MW102 MONITORING WELL LOCATION
	B-2 SOIL BORING LOCATION



DETAILED SITE MAP		
U.S. OIL CO., INC. - MILWAUKEE SOUTH TERMINAL 9135 NORTH 107TH STREET MILWAUKEE, WISCONSIN		
6871 S. Lovers Lane Franklin, WI 53132		
Phone: (414) 427-1200		Fax: (414) 427-1259
DRAWN BY: NWD	DATE: 09/27/2022	B.1.b.3
REVIEWED BY: TCP	PROJECT NO: 014-002-020	



# RR Sites Map



### Legend

- Open Site
- Closed Site
- Continuing Obligations Apply
- Facility-wide Site



1:3,960



NAD\_1983\_HARN\_Wisconsin\_TM

**DISCLAIMER:** The information shown on these maps has been obtained from various sources, and are of varying age, reliability and accuracy. These maps are not intended to be used for navigation, nor are these maps an authoritative source of information about legal land ownership or public access. No warranty, expressed or implied, is made regarding accuracy, applicability for a particular use, completeness, or timeliness of information depicted on this map. For more information, see the DNR Legal Notices web page: <http://dnr.wi.gov/org/legal/>

**Note:** Not all sites are mapped.

### Notes

## RR SITES MAP

U.S. OIL CO., INC. - MILWAUKEE SOUTH TERMINAL  
9135 NORTH 107TH STREET  
MILWAUKEE, WISCONSIN

**Endpoint Solutions**

6871 S. Lovers Lane  
Franklin, WI 53132

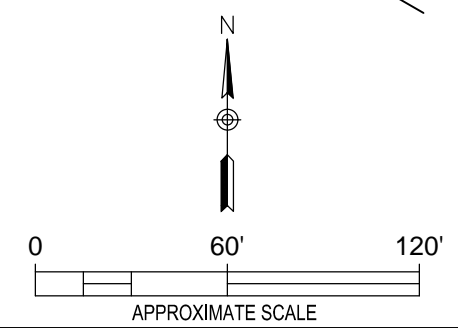
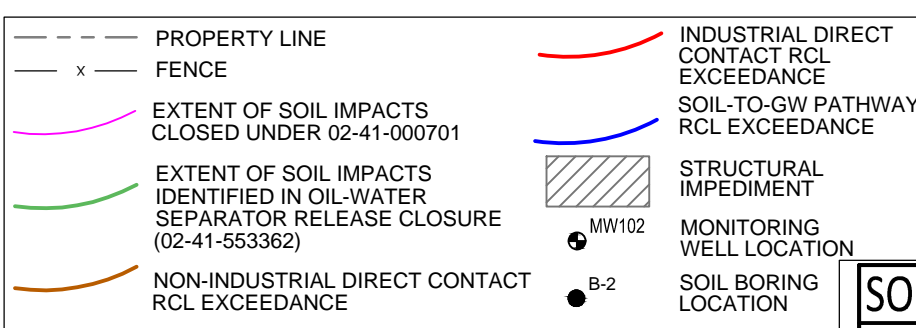
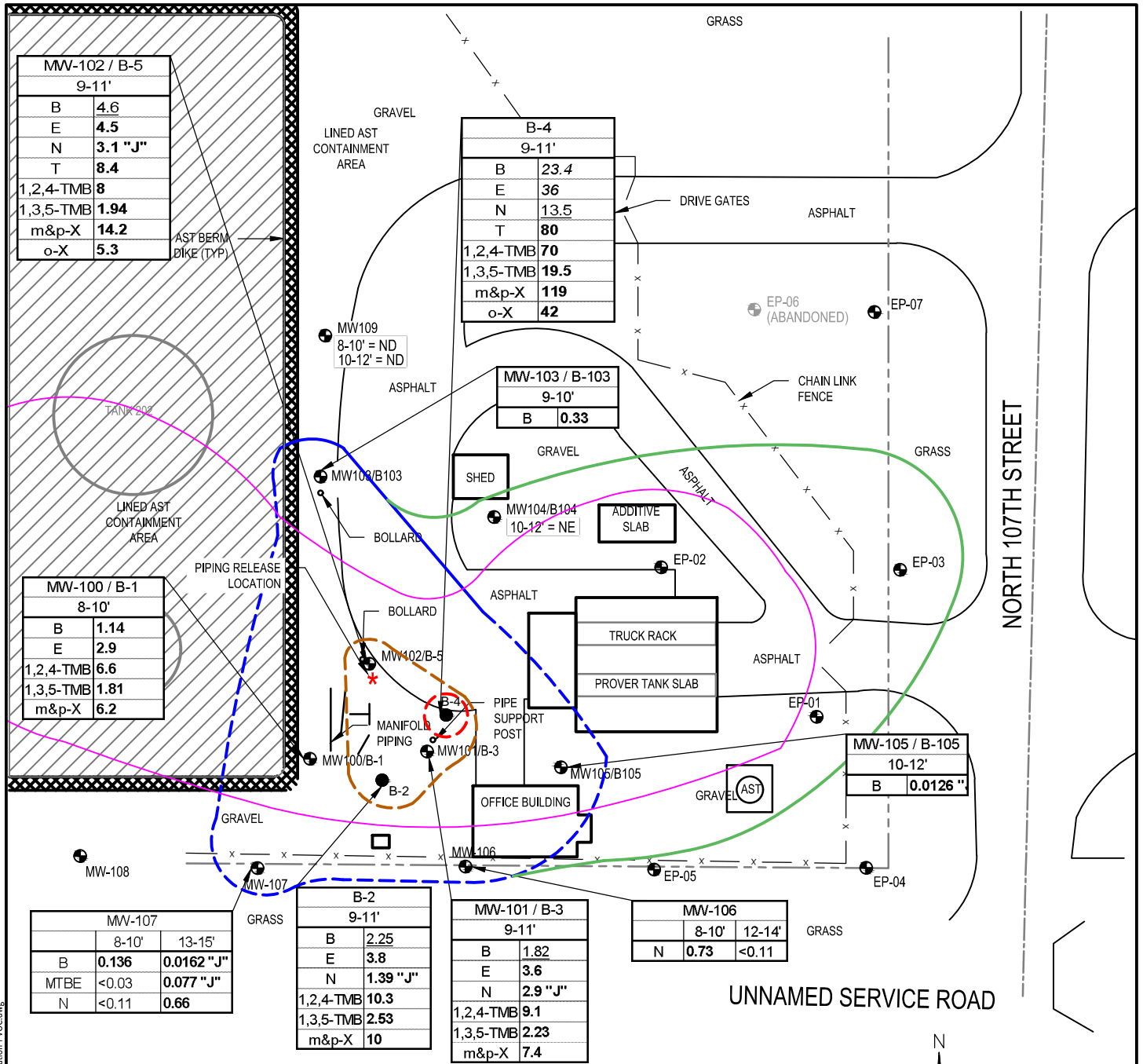
Phone: (414) 427-1200

Fax: (414) 427-1259

DRAWN BY: NWD DATE: 08/12/2021

REVIEWED BY: TCP PROJECT NO: 014-002-022

B.1.c



**NOTES**

1. ALL OTHER CONSTITUENTS REPORTED AS MILLIGRAMS PER KILOGRAM (mg/Kg).
  2. ONLY CONCENTRATIONS ABOVE THE WISCONSIN REGULATORY STANDARD SHOWN.
- "J" = DETECTION BETWEEN LIMIT OF DETECTION AND LIMIT OF QUANTITATION  
 NE = NO EXCEEDANCE      1,2,4-TMB = 1,2,4-TRIMETHYLBENZENE  
 ND = NON-DETECT      1,3,5-TMB = 1,3,5-TRIMETHYLBENZENE  
 B = BENZENE      M&P-X = M&P-XYLENE  
 E = ETHYLBENZENE      O-X = O-XYLENE  
 N = NAPHTHALENE      MTBE = METHYL TERT-BUTYL ETHER  
 T = TOLUENE

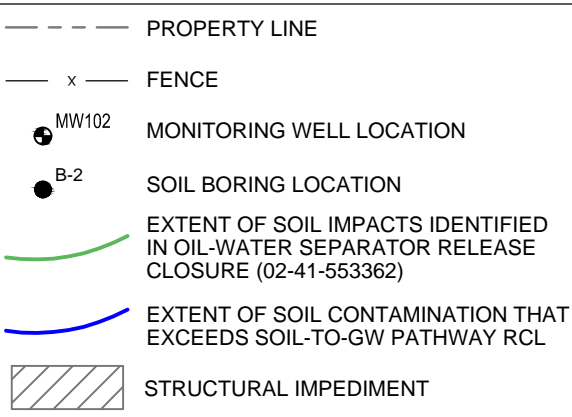
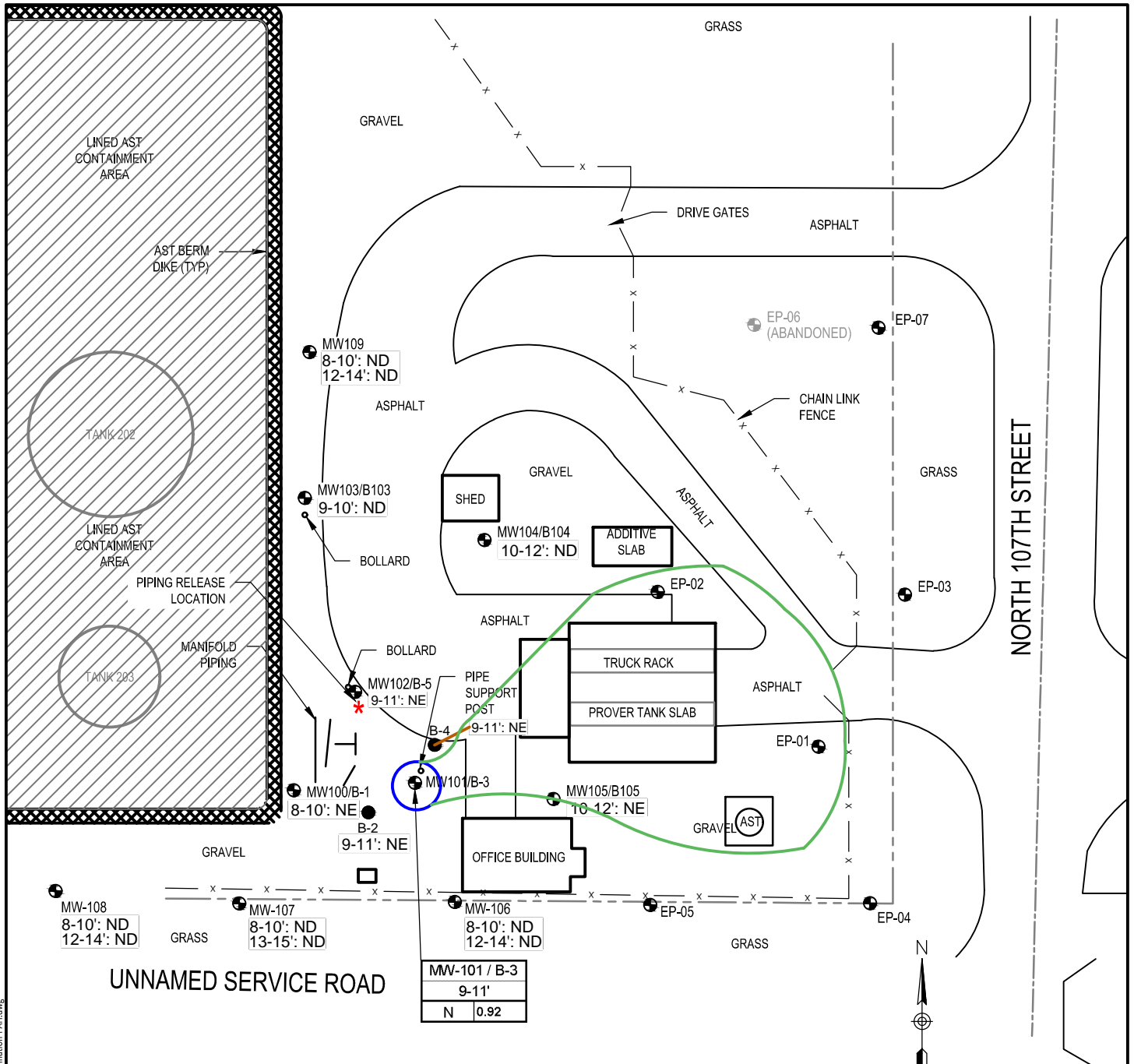
**SOIL CONTAMINATION - PVOCS**

U.S. OIL CO., INC. - MILWAUKEE SOUTH TERMINAL  
 9135 NORTH 107TH STREET  
 MILWAUKEE, WISCONSIN

**Endpoint Solutions**

6871 S. Lovers Lane  
 Franklin, WI 53132  
 Phone: (414) 427-1200      Fax: (414) 427-1259  
 DRAWN BY: MLP      DATE: 10/03/2022  
 REVIEWED BY: TJM      PROJECT NO: 014-002-022      B.2.a.1

P:\US Venture - 014\002 - Milwaukee South Terminal\Cadd\002-022 Closure Figures\Fig.B.2.a.1\_014-002-022 Soil Contamination-PVOC.dwg



- NOTES**
1. ALL OTHER CONSTITUENTS REPORTED AS MILLIGRAMS PER KILOGRAM (mg/Kg).
  2. ONLY CONCENTRATIONS ABOVE THE WISCONSIN REGULATORY STANDARD SHOWN.
- N = NAPHTHALENE  
 NE = NO EXCEEDANCE  
 ND = NON-DETECT

**SOIL CONTAMINATION - PAHs**

U.S. OIL CO., INC. - MILWAUKEE SOUTH TERMINAL  
 9135 NORTH 107TH STREET  
 MILWAUKEE, WISCONSIN

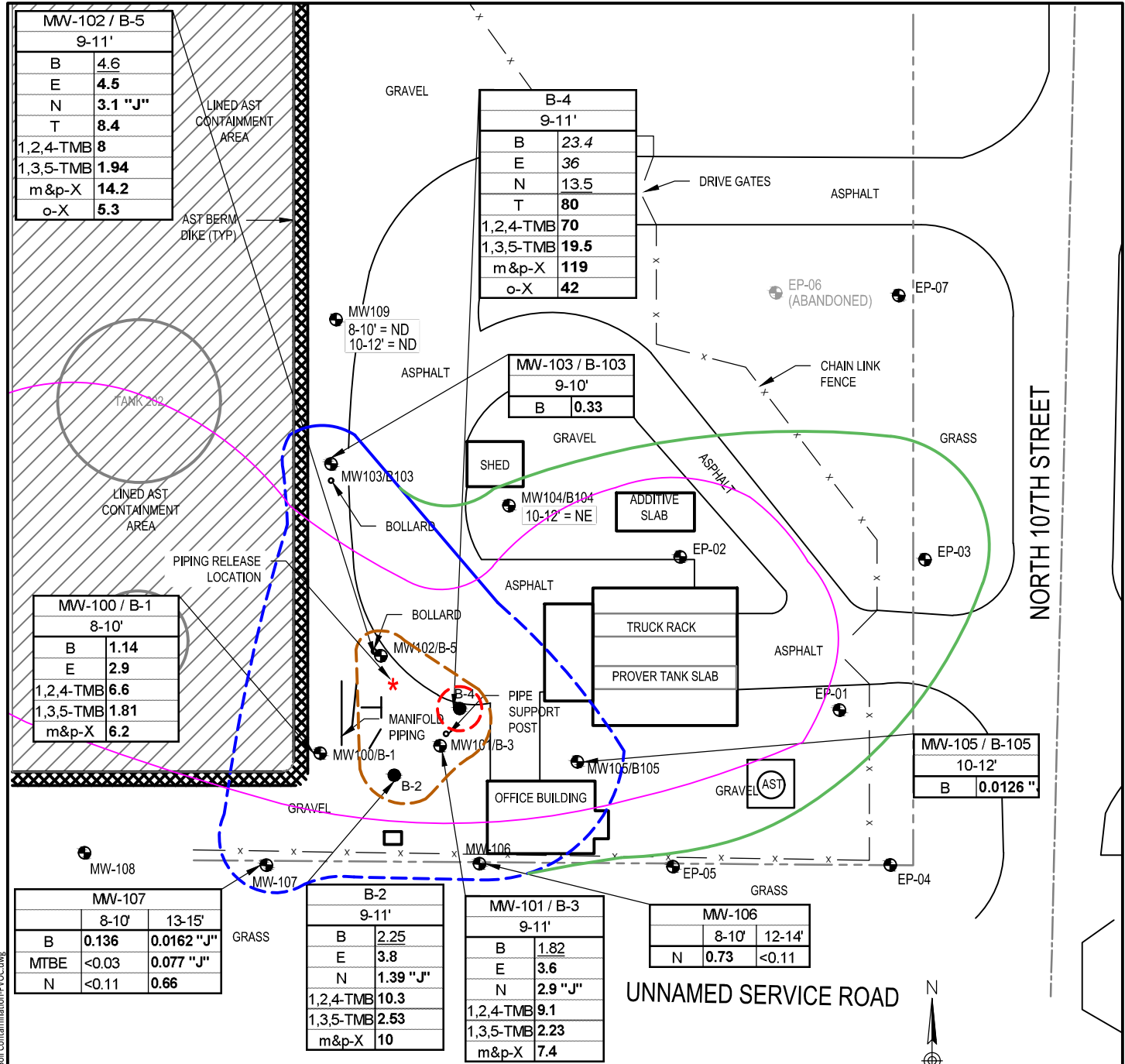
**Endpoint Solutions**

6871 S. Lovers Lane  
 Franklin, WI 53132  
 Phone: (414) 427-1200 Fax: (414) 427-1259

DRAWN BY: MLP	DATE: 10/03/2022	B.2.a.2
REVIEWED BY: TJM	PROJECT NO: 014-002-022	

P:\US Venture - 014\002 - Milwaukee South Terminal\Cadd\002-022 Closure Figures\Fig. B.2.a.2\_014-002-022 Soil Contamination-PAH.dwg

P:\US Venture - 014\002 - Milwaukee South Terminal\Cadd\002\002 Closure Figures\Fig.B.2.b.1\_014-002-002 Residual Soil Contamination-PVOC.dwg



MW-102 / B-5	
9-11'	
B	4.6
E	4.5
N	3.1 "J"
T	8.4
1,2,4-TMB	8
1,3,5-TMB	1.94
m&p-X	14.2
o-X	5.3

B-4	
9-11'	
B	23.4
E	36
N	13.5
T	80
1,2,4-TMB	70
1,3,5-TMB	19.5
m&p-X	119
o-X	42

MW-103 / B-103	
9-10'	
B	0.33

MW-100 / B-1	
8-10'	
B	1.14
E	2.9
1,2,4-TMB	6.6
1,3,5-TMB	1.81
m&p-X	6.2

MW-107		
8-10'		
B	0.136	0.0162 "J"
MTBE	<0.03	0.077 "J"
N	<0.11	0.66

B-2	
9-11'	
B	2.25
E	3.8
N	1.39 "J"
1,2,4-TMB	10.3
1,3,5-TMB	2.53
m&p-X	10

MW-101 / B-3	
9-11'	
B	1.82
E	3.6
N	2.9 "J"
1,2,4-TMB	9.1
1,3,5-TMB	2.23
m&p-X	7.4

MW-106		
8-10'		
12-14'		
N	0.73	<0.11

MW-105 / B-105	
10-12'	
B	0.0126 "

	PROPERTY LINE		INDUSTRIAL DIRECT CONTACT RCL EXCEEDANCE
	FENCE		SOIL-TO-GW PATHWAY RCL EXCEEDANCE
	EXTENT OF SOIL IMPACTS CLOSED UNDER 02-41-000701		STRUCTURAL IMPEDIMENT
	EXTENT OF SOIL IMPACTS IDENTIFIED IN OIL-WATER SEPARATOR RELEASE CLOSURE (02-41-553362)		MW102 MONITORING WELL LOCATION
	NON-INDUSTRIAL DIRECT CONTACT RCL EXCEEDANCE		B-2 SOIL BORING LOCATION

**NOTES**

- ALL OTHER CONSTITUENTS REPORTED AS MILLIGRAMS PER KILOGRAM (mg/Kg).
  - ONLY CONCENTRATIONS ABOVE THE WISCONSIN REGULATORY STANDARD SHOWN.
- "J" = DETECTION BETWEEN LIMIT OF DETECTION AND LIMIT OF QUANTITATION  
 NE = NO EXCEEDANCE      1,2,4-TMB = 1,2,4-TRIMETHYLBENZENE  
 ND = NON-DETECT      1,3,5-TMB = 1,3,5-TRIMETHYLBENZENE  
 B = BENZENE      M&P-X = M&P-XYLENE  
 E = ETHYLBENZENE      O-X = O-XYLENE  
 N = NAPHTHALENE      MTBE = METHYL TERT-BUTYL ETHER  
 T = TOLUENE

**RESIDUAL SOIL CONTAMINATION - PVOCs**

U.S. OIL CO., INC. - MILWAUKEE SOUTH TERMINAL  
 9135 NORTH 107TH STREET  
 MILWAUKEE, WISCONSIN

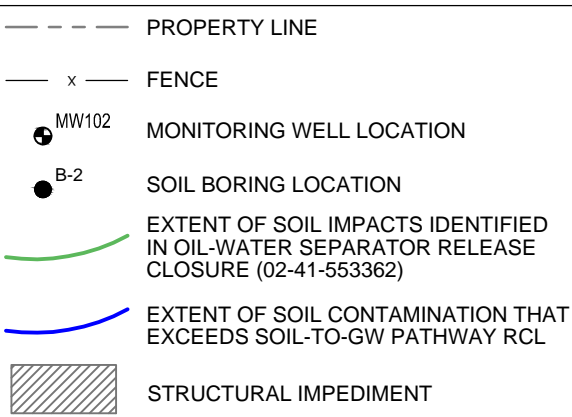
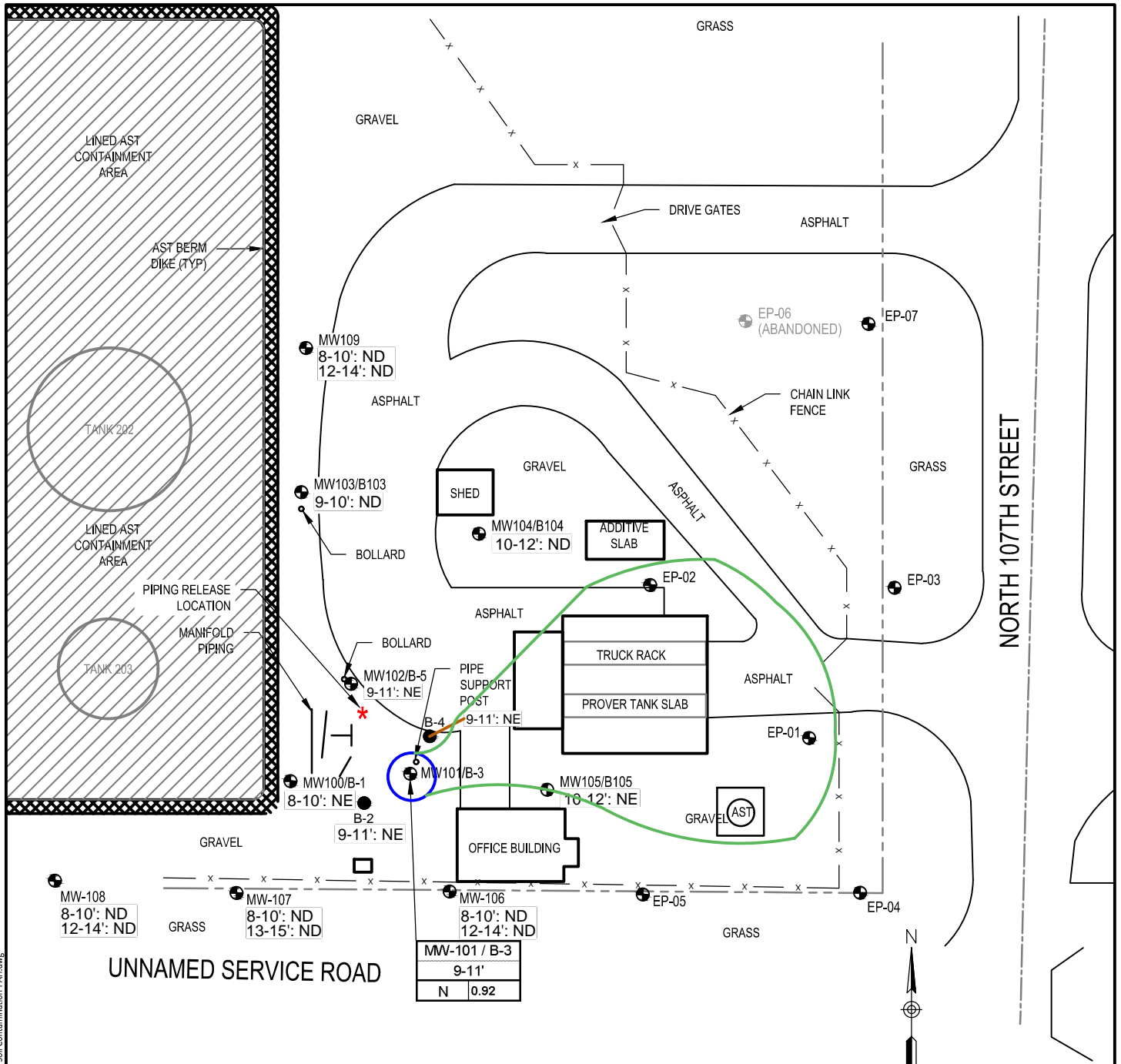
**Endpoint Solutions**

6871 S. Lovers Lane  
 Franklin, WI 53132

Phone: (414) 427-1200      Fax: (414) 427-1259

DRAWN BY: MLP	DATE: 10/03/2022	B.2.b.1
REVIEWED BY: TJM	PROJECT NO: 014-002-022	





- NOTES**
1. ALL OTHER CONSTITUENTS REPORTED AS MILLIGRAMS PER KILOGRAM (mg/Kg).
  2. ONLY CONCENTRATIONS ABOVE THE WISCONSIN REGULATORY STANDARD SHOWN.
- N = NAPHTHALENE  
 NE = NO EXCEEDANCE  
 ND = NON-DETECT

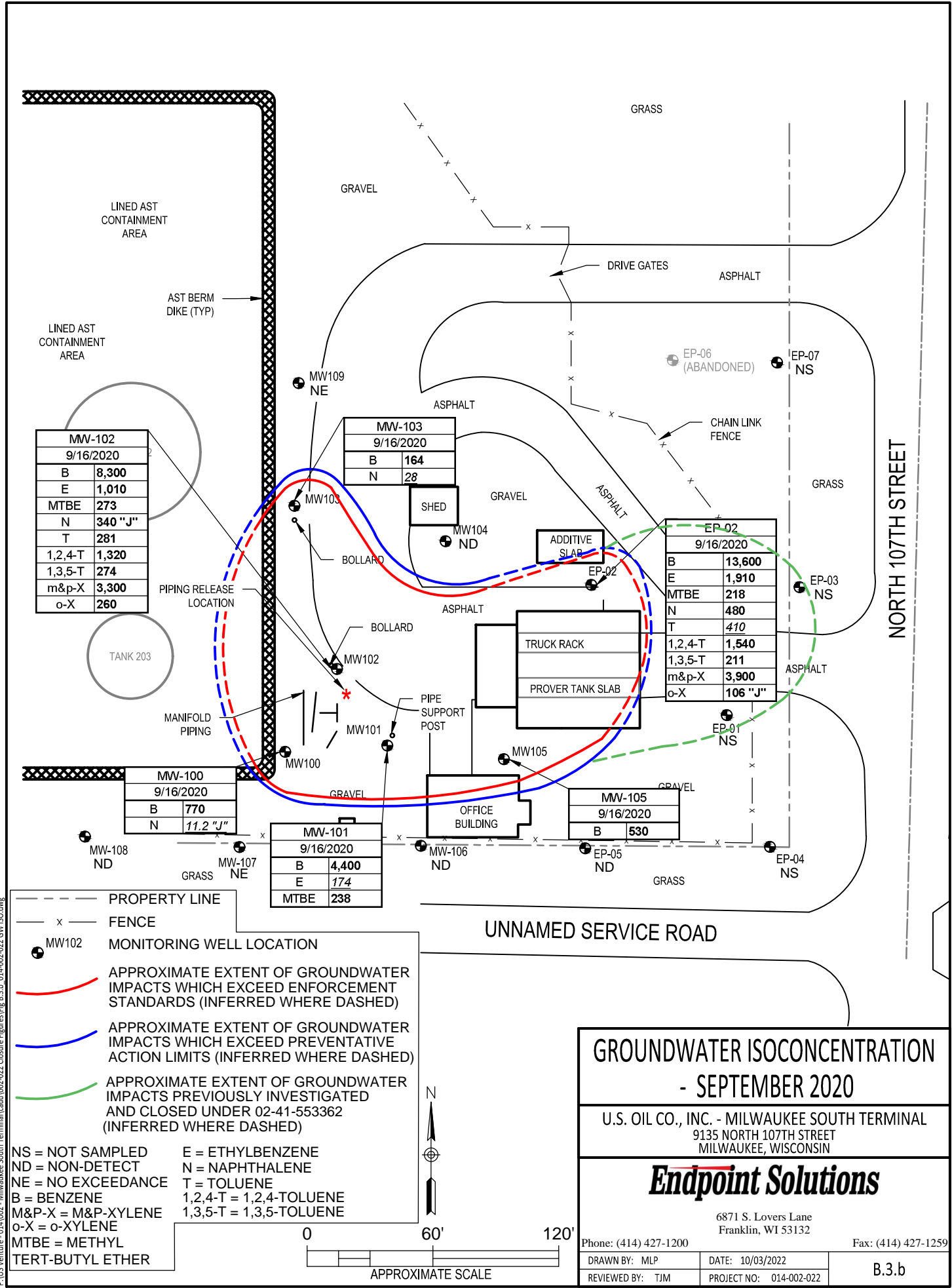
## RESIDUAL SOIL CONTAMINATION - PAHs

U.S. OIL CO., INC. - MILWAUKEE SOUTH TERMINAL  
 9135 NORTH 107TH STREET  
 MILWAUKEE, WISCONSIN

**Endpoint Solutions**

6871 S. Lovers Lane  
 Franklin, WI 53132

Phone: (414) 427-1200		Fax: (414) 427-1259	
DRAWN BY: MLP	DATE: 10/03/2022	B.2.b.2	
REVIEWED BY: TJM	PROJECT NO: 014-002-022		



MW-102	
9/16/2020	
B	8,300
E	1,010
MTBE	273
N	340 "J"
T	281
1,2,4-T	1,320
1,3,5-T	274
m&p-X	3,300
o-X	260

MW-103	
9/16/2020	
B	164
N	28

EP-02	
9/16/2020	
B	13,600
E	1,910
MTBE	218
N	480
T	410
1,2,4-T	1,540
1,3,5-T	211
m&p-X	3,900
o-X	106 "J"

MW-100	
9/16/2020	
B	770
N	11.2 "J"

MW-101	
9/16/2020	
B	4,400
E	174
MTBE	238

MW-105	
9/16/2020	
B	530

- - - - - PROPERTY LINE  
 x - - - - - FENCE  
 ● MW102 MONITORING WELL LOCATION  
 - - - - - APPROXIMATE EXTENT OF GROUNDWATER IMPACTS WHICH EXCEED ENFORCEMENT STANDARDS (INFERRED WHERE DASHED)  
 - - - - - APPROXIMATE EXTENT OF GROUNDWATER IMPACTS WHICH EXCEED PREVENTATIVE ACTION LIMITS (INFERRED WHERE DASHED)  
 - - - - - APPROXIMATE EXTENT OF GROUNDWATER IMPACTS PREVIOUSLY INVESTIGATED AND CLOSED UNDER 02-41-553362 (INFERRED WHERE DASHED)

NS = NOT SAMPLED  
 ND = NON-DETECT  
 NE = NO EXCEEDANCE  
 B = BENZENE  
 M&P-X = M&P-XYLENE  
 o-X = o-XYLENE  
 MTBE = METHYL TERT-BUTYL ETHER

E = ETHYLBENZENE  
 N = NAPHTHALENE  
 T = TOLUENE  
 1,2,4-T = 1,2,4-TOLUENE  
 1,3,5-T = 1,3,5-TOLUENE

0      60'      120'  
 APPROXIMATE SCALE

**GROUNDWATER ISOCONCENTRATION**

**- SEPTEMBER 2020**

U.S. OIL CO., INC. - MILWAUKEE SOUTH TERMINAL  
 9135 NORTH 107TH STREET  
 MILWAUKEE, WISCONSIN

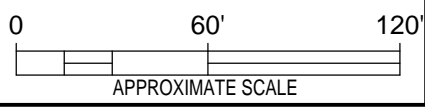
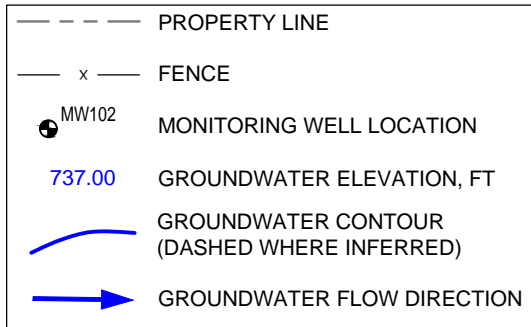
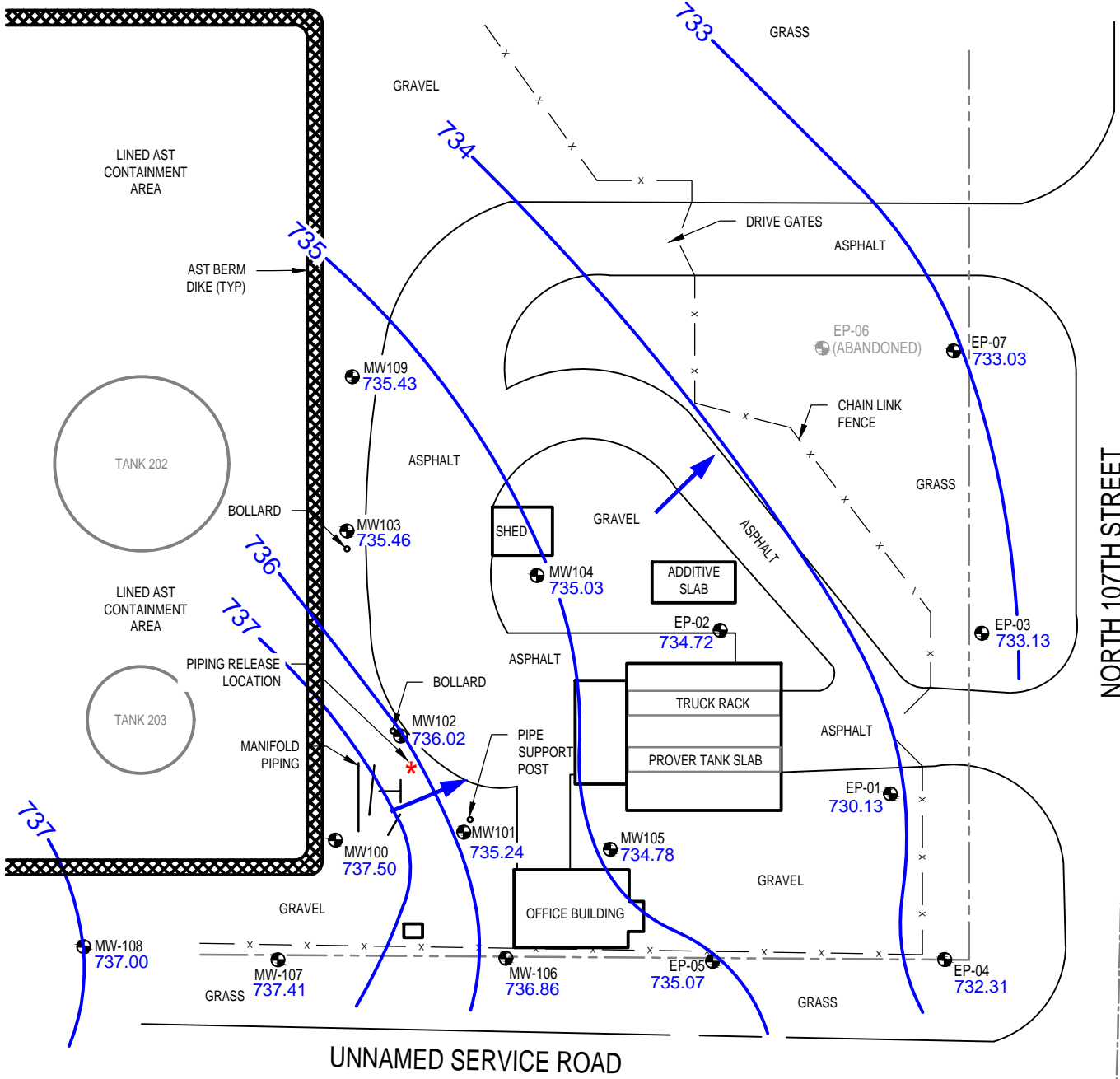
**Endpoint Solutions**

6871 S. Lovers Lane  
 Franklin, WI 53132

Phone: (414) 427-1200      Fax: (414) 427-1259  
 DRAWN BY: MLP      DATE: 10/03/2022  
 REVIEWED BY: TJM      PROJECT NO: 014-002-022

B.3.b

P:\US Venture - 014\002 - Milwaukee South Terminal\Cadd\002-002 Closure Figures\Fig. B.3.b\_014-002-022 GW ISO.dwg



## GROUNDWATER FLOW DIRECTION SEPTEMBER 2020

U.S. OIL CO., INC. - MILWAUKEE SOUTH TERMINAL  
9135 NORTH 107TH STREET  
MILWAUKEE, WISCONSIN

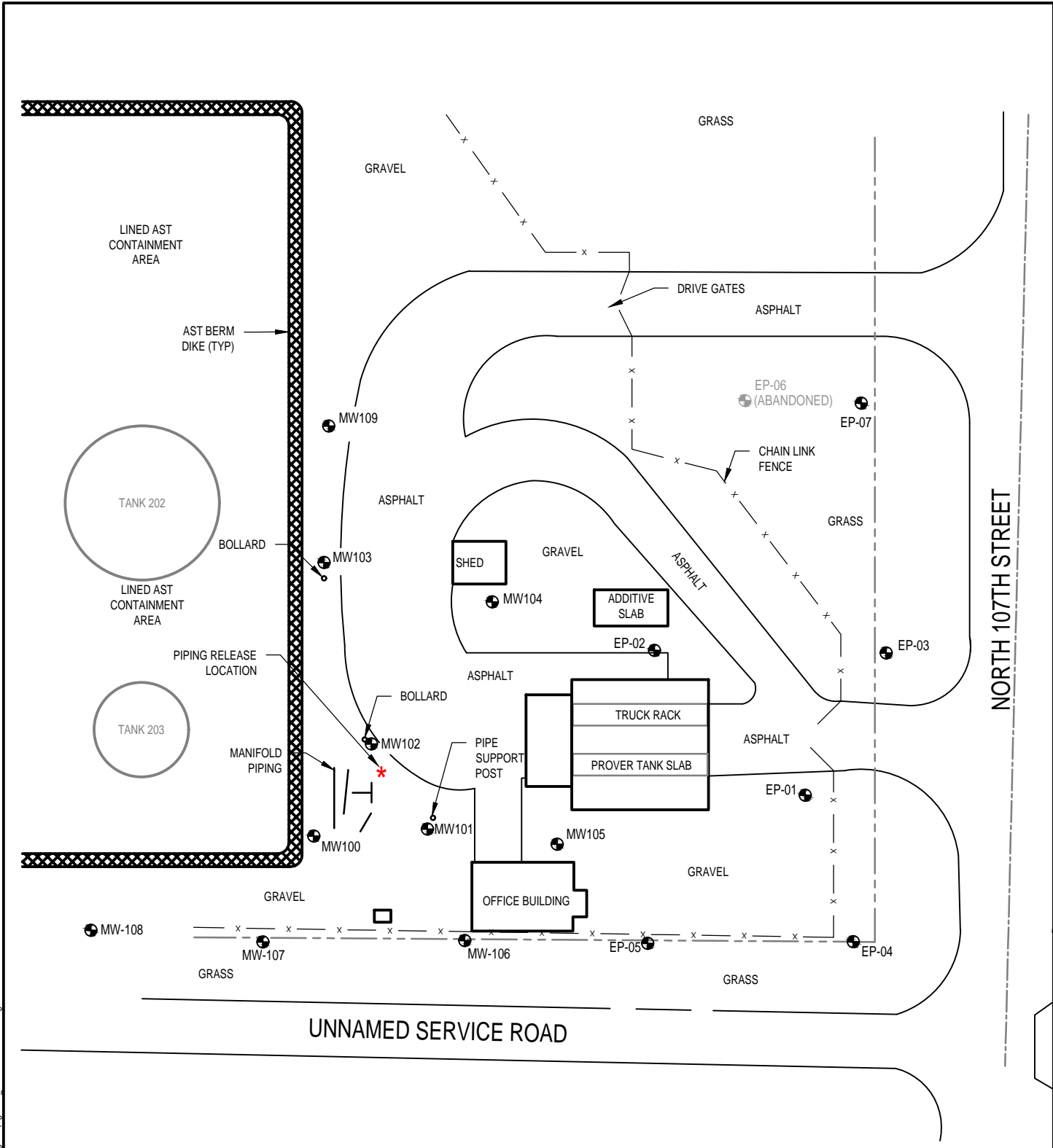
**Endpoint Solutions**

6871 S. Lovers Lane  
Franklin, WI 53132

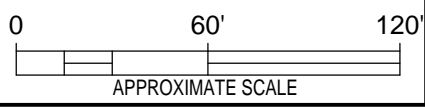
Phone: (414) 427-1200 Fax: (414) 427-1259

DRAWN BY: NWD	DATE: 09/27/2022	B.3.c
REVIEWED BY: TCP	PROJECT NO: 014-002-022	

P:\US Venture - 014\02 - Milwaukee South Terminal\Cadd\02-022 Closure Figures\Fig. B.3.c\_014-002-022 GW Flow Direction.dwg



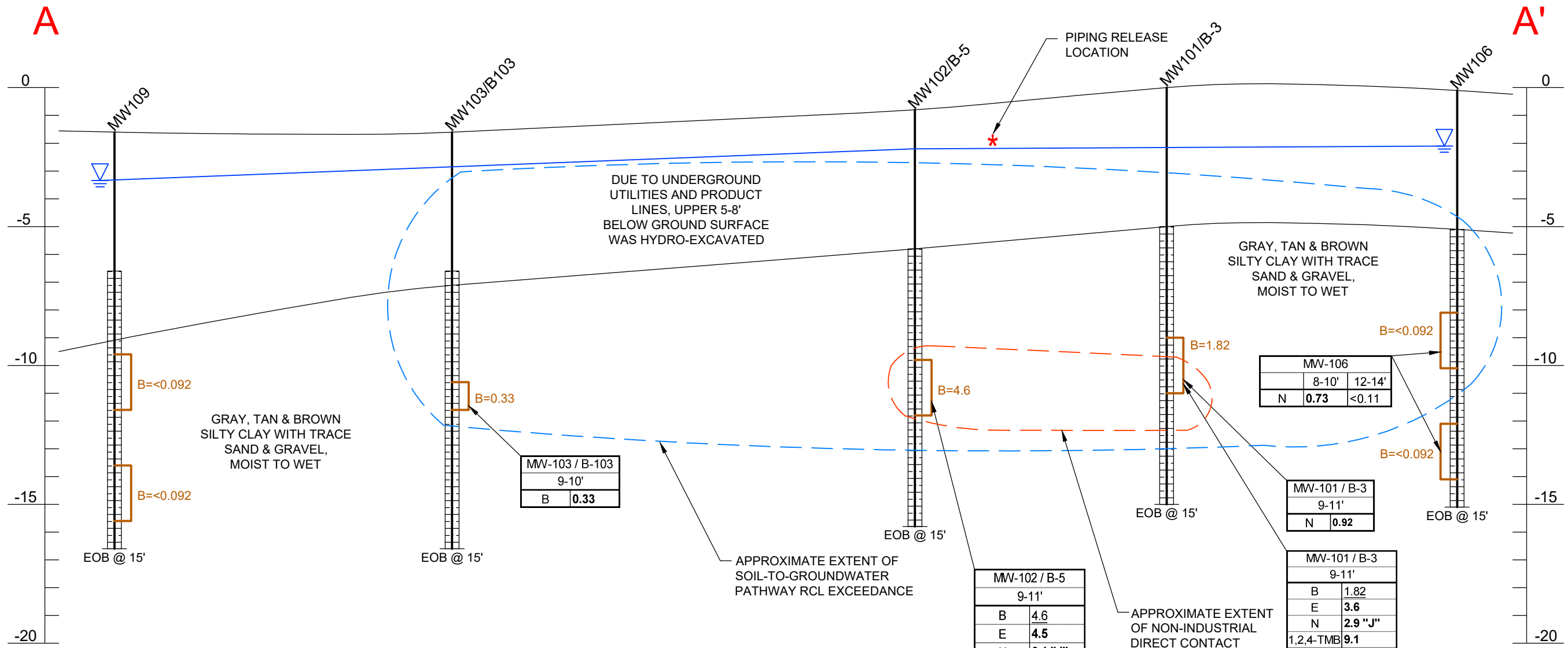
	PROPERTY LINE
	FENCE
	MONITORING WELL LOCATION (TO BE ABANDONED)



<b>MONITORING WELLS</b>		
U.S. OIL CO., INC. - MILWAUKEE SOUTH TERMINAL 9135 NORTH 107TH STREET MILWAUKEE, WISCONSIN		
<b>Endpoint Solutions</b>		
6871 S. Lovers Lane Franklin, WI 53132		
Phone: (414) 427-1200		Fax: (414) 427-1259
DRAWN BY: NWD	DATE: 09/27/2022	B.3.d
REVIEWED BY: TCP	PROJECT NO: 014-002-022	

P:\US Venture - 014\002 - Milwaukee South Terminal\Cadd\002-022 Closure Figures\Fig. B.3.d\_014-002-022 MWs.dwg

P:\US Venture - 014\002 - Milwaukee South Terminal\cadd\002-022 Closure Figures\Figs B.3.a.1-2\_014-002-022 Geologic Cross Sections.dwg



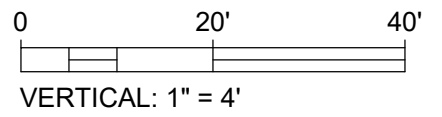
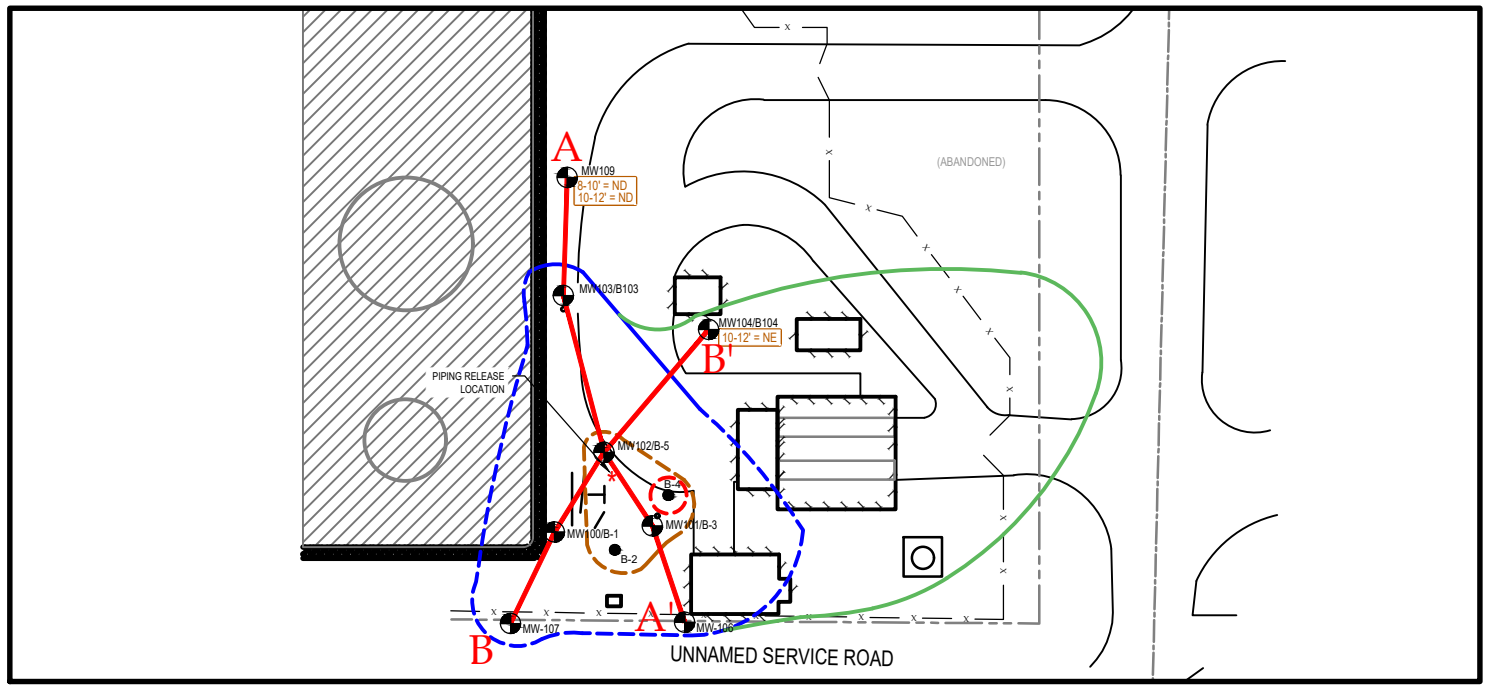
MW-103 / B-103	
9-10'	
B	0.33

MW-102 / B-5	
9-11'	
B	4.6
E	4.5
N	3.1 "J"
T	8.4
1,2,4-TMB	8
1,3,5-TMB	1.94
m&p-X	14.2
o-X	5.3

MW-106	
8-10' 12-14'	
N	0.73 <0.11

MW-101 / B-3	
9-11'	
N	0.92

MW-101 / B-3	
9-11'	
B	1.82
E	3.6
N	2.9 "J"
1,2,4-TMB	9.1
1,3,5-TMB	2.23
m&p-X	7.4



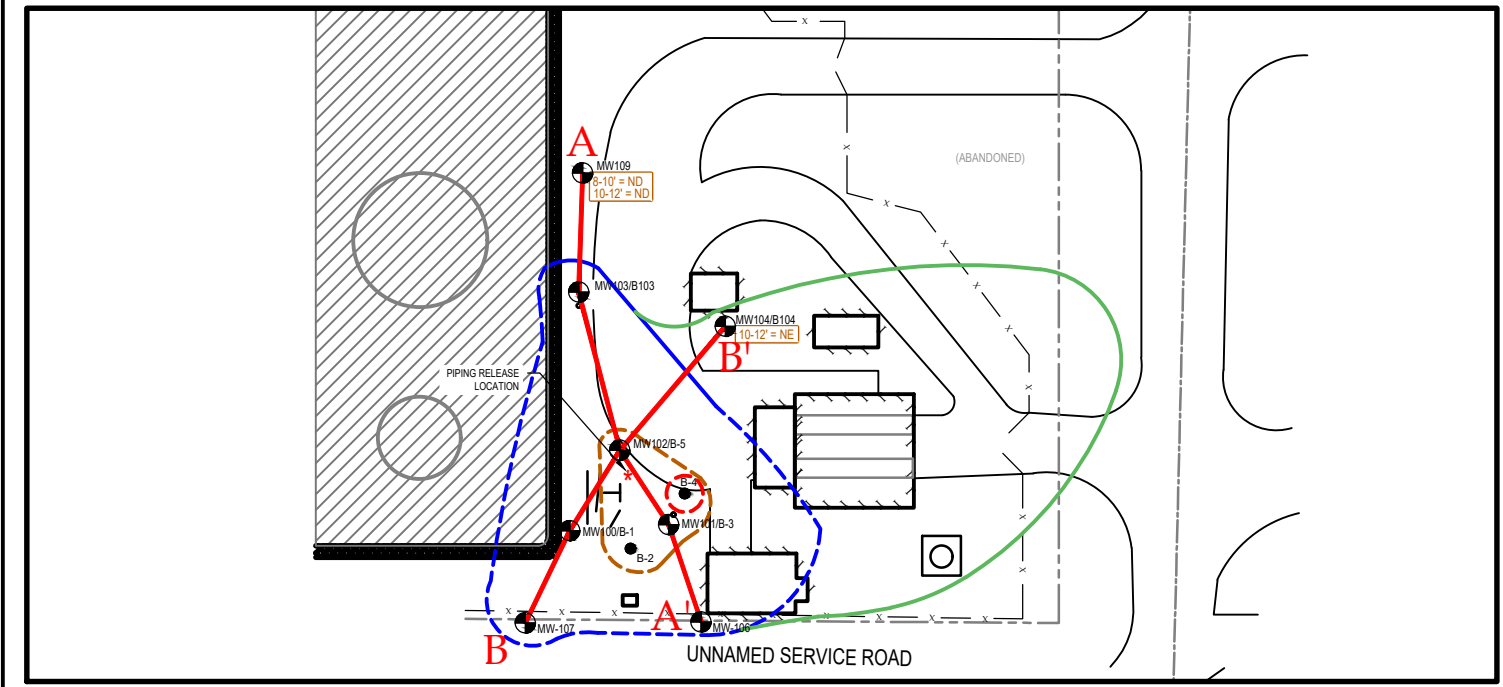
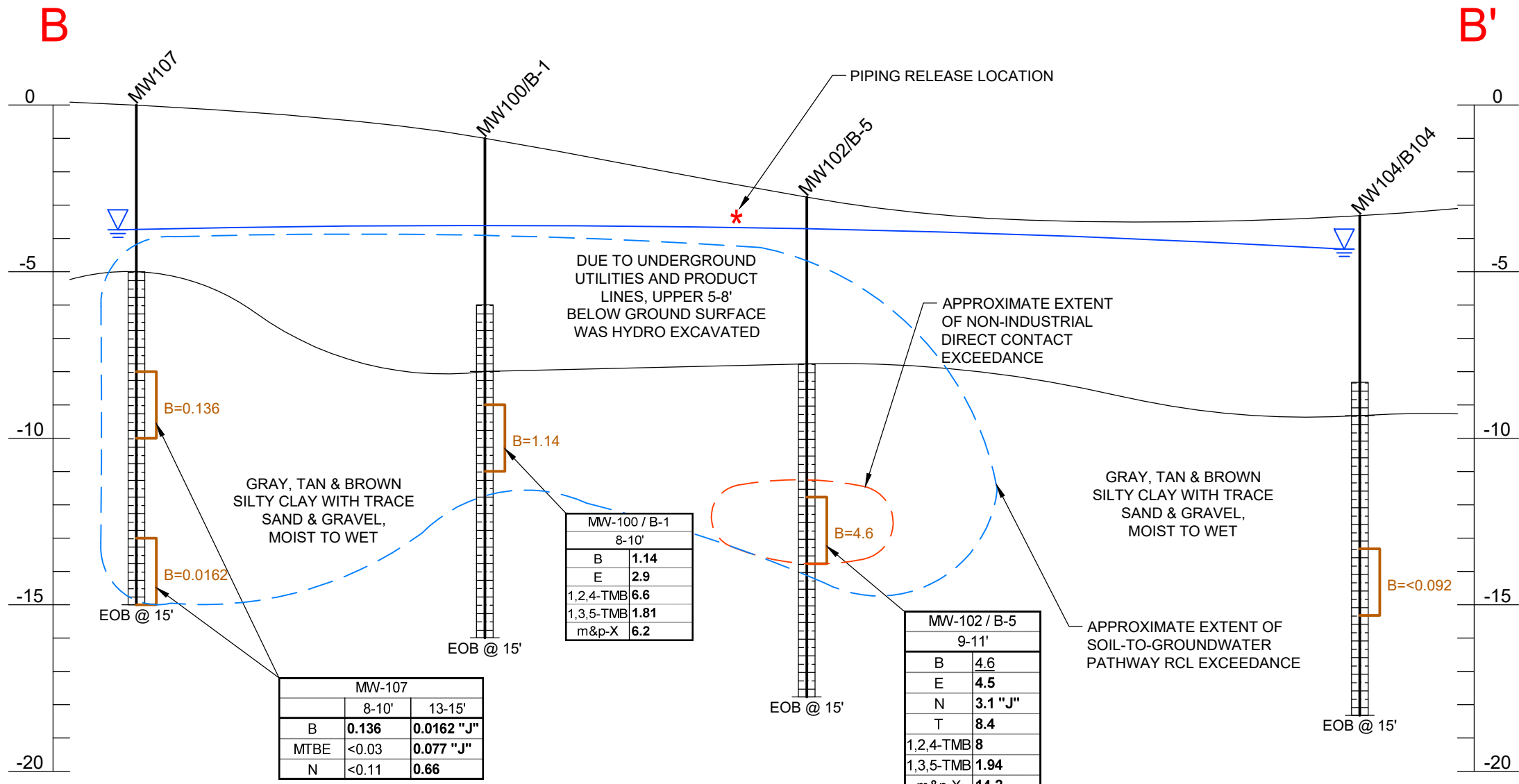
- B - BENZENE
- MTBE - METHYL TERT-BUTYLETHER
- N - NAPHTHALENE
- E - ETHYLBENZENE
- T - TOLUENE
- 1,2,3-TMB - 1,2,4-TRIMETHYLBENZENE
- 1,3,5-TMB - 1,3,5-TRIMETHYLBENZENE
- M&P-X - M&P-XYLENE
- O-X - O-XYLENE

**GEOLOGIC CROSS-SECTION A-A'**  
 U.S. OIL CO., INC. - MILWAUKEE SOUTH TERMINAL  
 9135 NORTH 107TH STREET  
 MILWAUKEE, WISCONSIN

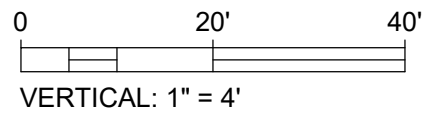
**Endpoint Solutions**

6871 S. Lovers Lane  
 Franklin, WI 53132  
 Phone: (414) 427-1200 Fax: (414) 427-1259  
 DRAWN BY: MLP DATE: 08/13/2021  
 REVIEWED BY: TJM PROJECT NO: 014-002-022 B.3.a.1

P:\US Venture - 014\002 - Milwaukee South Terminal\cadd\002-022 Closure Figures\Figs B.3.a.1-2\_014-002-022 Geologic Cross Sections.dwg



B -	BENZENE
MTBE -	METHYL TERT-BUTYLETHER
N -	NAPHTHALENE
E -	ETHYLBENZENE
T -	TOLUENE
1,2,3-TMB -	1,2,4-TRIMETHYLBENZENE
1,3,5-TMB -	1,3,5-TRIMETHYLBENZENE
M&P-X -	M&P-XYLENE
O-X -	O-XYLENE



**GEOLOGIC CROSS-SECTION B-B'**  
 U.S. OIL CO., INC. - MILWAUKEE SOUTH TERMINAL  
 9135 NORTH 107TH STREET  
 MILWAUKEE, WISCONSIN

**Endpoint Solutions**  
 6871 S. Lovers Lane  
 Franklin, WI 53132  
 Phone: (414) 427-1200      Fax: (414) 427-1259

DRAWN BY: MLP	DATE: 08/13/2021	B.3.a.2
REVIEWED BY: TJM	PROJECT NO: 014-002-022	