



Excellence through experience™

709 Gillette St., Ste 3, La Crosse, WI 54603 ♦ 1-800-552-2932 ♦ Fax (608) 781-8893 Email: rona@metcohq.com ♦ www.metcohq.com

January 3, 2019

BRRTS #: 03-41-563586
PECFA #: 53208-4036-05

Andy Alles
Wisconsin Department of Natural Resources
101 S Webster St
Madison, WI 53707

Subject: Mr. P's Tire – Groundwater Monitoring Report

Dear Mr. Alles,

Enclosed is the report for the Mr. P's Tire site located in Milwaukee, Wisconsin. **This completes the Public Bidding Deferred workscope approved on August 1, 2018.**

Groundwater Monitoring Workscope

On August 20, 2018, METCO collected groundwater samples from six monitoring wells (MW-1, MW-2, MW-3, MW-4, MW-5, and MW-6) for PVOC and Naphthalene analysis. Field measurements for water level, Dissolved Oxygen, pH, ORP, specific conductance, and temperature were collected from the sampled monitoring wells.

On November 14, 2018, METCO collected groundwater samples from six monitoring wells (MW-1, MW-2, MW-3, MW-4, MW-5, and MW-6) for PVOC and Naphthalene analysis. Field measurements for water level, Dissolved Oxygen, pH, ORP, specific conductance, and temperature were collected from the sampled monitoring wells.

Groundwater Results

Monitoring Well MW-1: Currently shows NR140 Enforcement Standard (ES) exceedances for Benzene (950 ppb), Ethylbenzene (2,090 ppb), Naphthalene (269 ppb), Trimethylbenzenes (1,730 ppb), and Xylene (6,450 ppb) as well as a NR140 Preventative Action Limit (PAL) exceedance for Toluene (189 ppb). Groundwater contaminant trends appear to be increasing, except Benzene, which appears to be stable to decreasing. These trends may be due to the depth of water rising over the last three rounds.

Monitoring Well MW-2: Currently shows an NR140 Enforcement Standard (ES) exceedance for Benzene (266 ppb). Contaminant levels appear to be stable to decreasing.

Monitoring Well MW-3: Currently shows no detects for all contaminants of concern.

Monitoring Well MW-4: Currently shows no detects for all contaminants of concern.

Monitoring Well MW-5: Currently shows an NR140 Enforcement Standard (ES) exceedance for Benzene (43 ppb) as well as a NR140 Preventative Action Limit (PAL) exceedance for Naphthalene (18 ppb). Groundwater contaminant trends appear to be at least stable.

Monitoring Well MW-6: Currently shows detects, but no exceedances for all contaminants of concern.

Conclusions/Recommendations

Based on current results, METCO recommends that the Mr. P's Tire site be reviewed for the possibility of "closure" for the following reasons:

- 1) The extent and degree of petroleum contamination in soil and groundwater has been adequately defined.
- 2) The limited extent of soil contamination exceeding NR 720 Direct Contact RCL (area of G-2) can be addressed with a cap Maintenance Plan (concrete/asphalt).
- 3) Overall contaminant trends in groundwater appear to be at least stable to decreasing with the exception of MW-1 which may be due to the rising watertable over the last three rounds.
- 4) The risk of vapor intrusion to the on-site building appears unlikely due to soil and groundwater contamination being greater than 10 feet from the building.
- 5) The subject property and surrounding properties are all served by the City of Milwaukee municipal water supply, which draws its potable water from Lake Michigan. METCO is not aware of any private water supply wells within 1,200 feet of the subject property.

However, if the state determines that additional monitoring will be required prior to closure, please contact METCO to discuss.

Per WDNR response to this conclusion/recommendation METCO will proceed.

A Detailed Site Map, Groundwater Flow Maps (2), Groundwater Isoconcentration Map, Data Tables, and Laboratory Documents have been attached.

If you have any questions or comments, please feel free to call (608-781-8879) or email at jasonp@metcohq.com.

Sincerely,



Jason T. Powell
Staff Scientist

Attachments

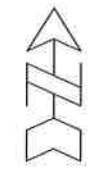
c: Mark Pachefsky – Client

APARTMENT BUILDING
2712-2716 W CLYBOURN ST

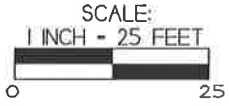
AUTO REPAIR SHOP AND
FORMER GAS STATION
505 N 27TH ST

FORMER GAS STATION
AND CLOSED LUST SITES
DAMIANO'S SERVICE STATION
BRRTS# 03-41-000044
PAUL DAMIANO PROPERTY
BRRTS# 03-41-004788

DETAILED SITE MAP	
MR P'S TIRE	
 <small>709 Gillette St, Suite 3 La Crosse, WI 54603 Tel: (608) 781-8879 Fax: (608) 781-8593 <i>Excellence through experience</i></small>	MILWAUKEE, WISCONSIN
<small>DRAWN BY: ED</small>	<small>DATE: 9/2/16</small>
<small>MODIFIED BY: HM</small>	<small>DATE: 2/15/17</small>

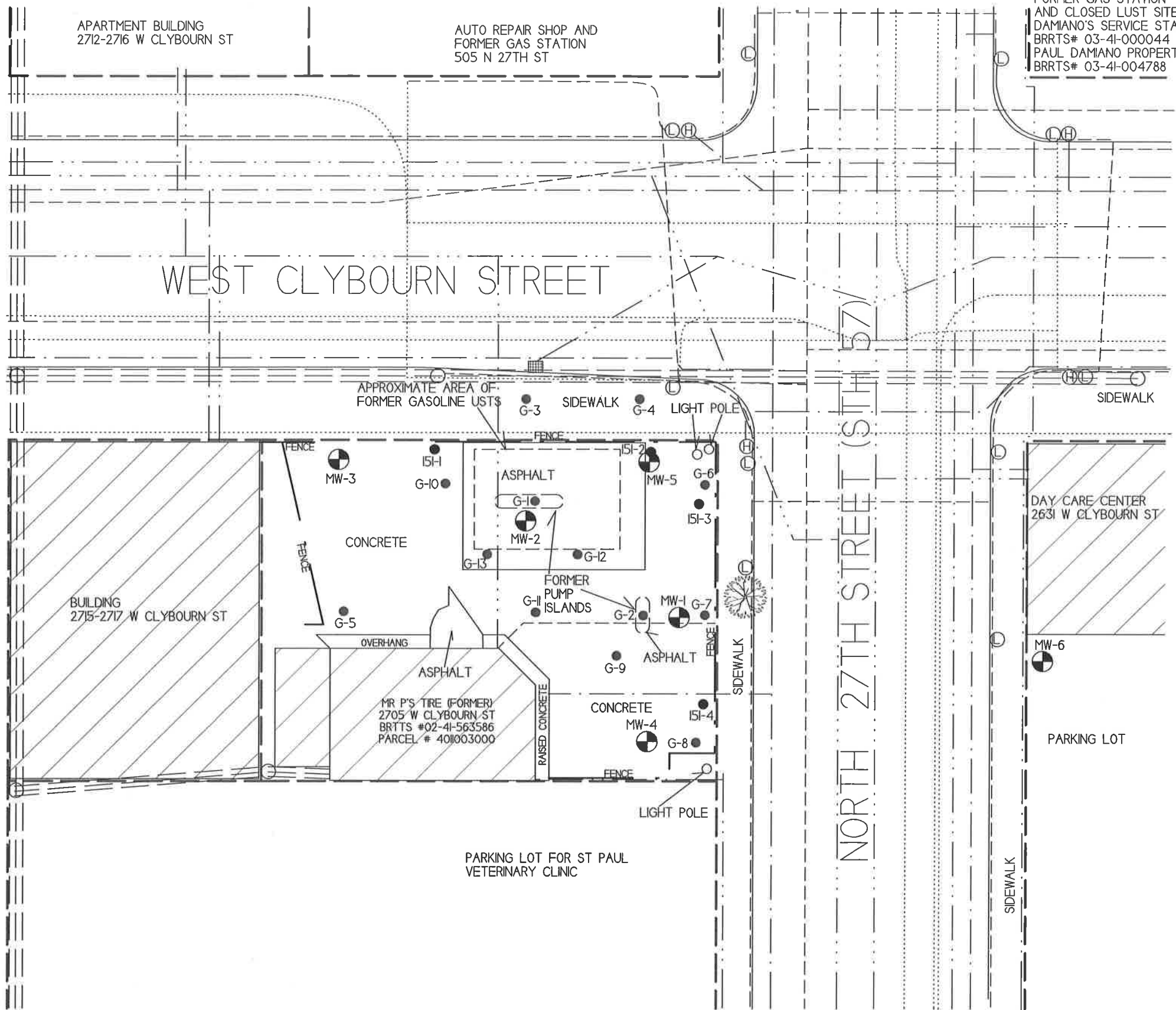


NOTE: INFORMATION BASED ON AVAILABLE
DATA ACTUAL CONDITIONS MAY DIFFER



- - SOIL BORING LOCATION (PHASE 2 INVESTIGATION)
- ⊕ - MONITORING WELL LOCATION
- - GEOPROBE BORING LOCATION
- - UTILITY POLE
- ⊙ - STREET LIGHT/TRAFFIC SIGNAL
- ⊗ - SEWER MAN HOLE
- ▣ - STORM DRAIN
- ⊕ - FIRE HYDRANT

- — — — — - WATER LINE
- - - - - - - - - - - - SANITARY SEWER LINE
- · — · — · — · — · — · - NATURAL GAS LINE
- - - - - - - - - - - - BURIED ELECTRIC LINE
- ≡ ≡ ≡ ≡ ≡ ≡ ≡ ≡ ≡ ≡ - OVERHEAD UTILITIES
- · · · · · · · · · · · · · · · · · - TELEPHONE/CABLE LINE
- ———— - PROPERTY BOUNDARY



BUILDING
2715-2717 W CLYBOURN ST

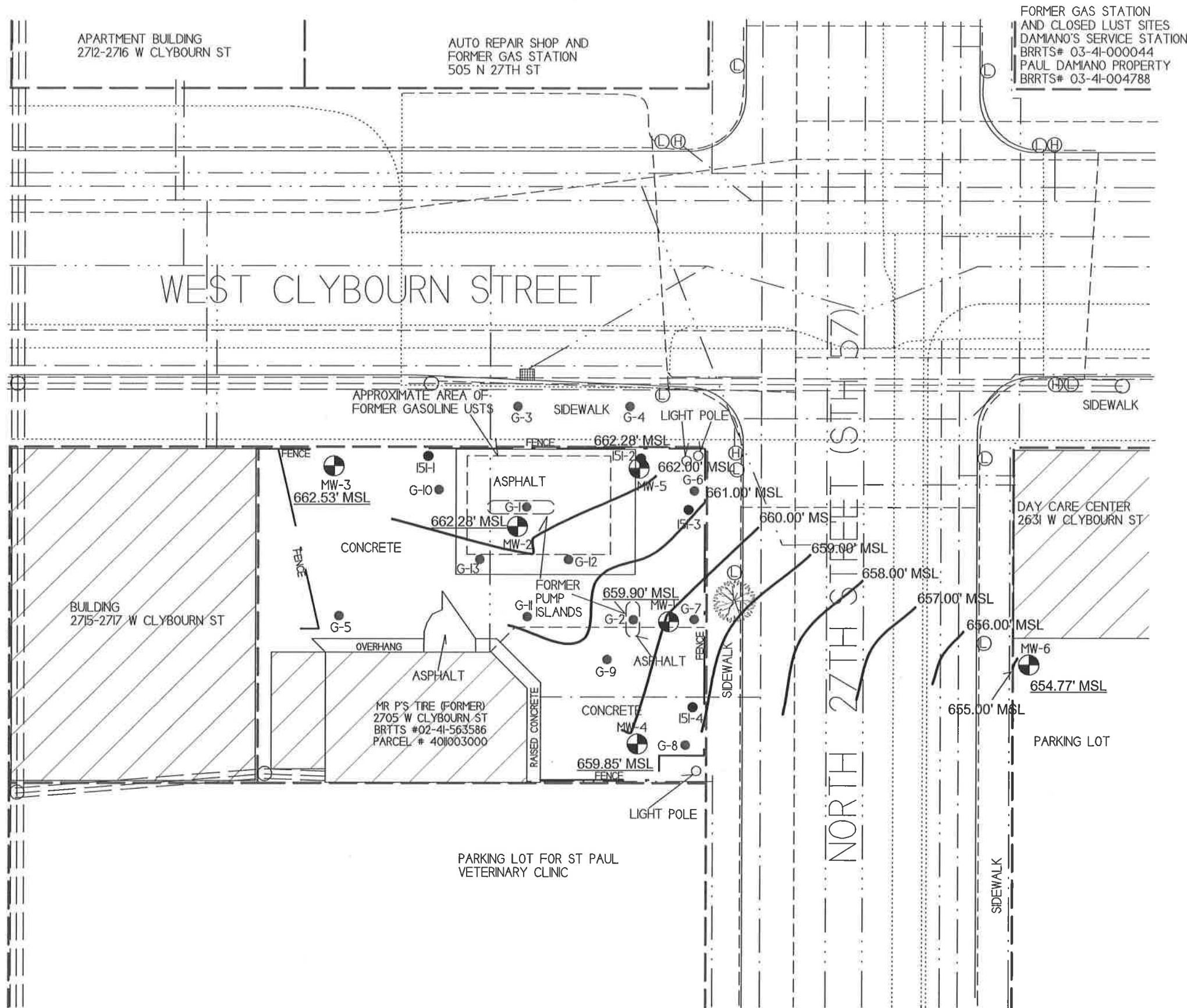
MR P'S TIRE (FORMER)
2705 W CLYBOURN ST
BRRTS #02-41-563586
PARCEL # 401003000

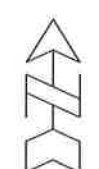

DAY CARE CENTER
2631 W CLYBOURN ST

PARKING LOT FOR ST PAUL
VETERINARY CLINIC

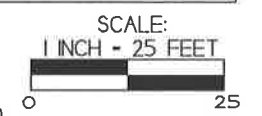
PARKING LOT

NORTH 27TH STREET (ST 57)

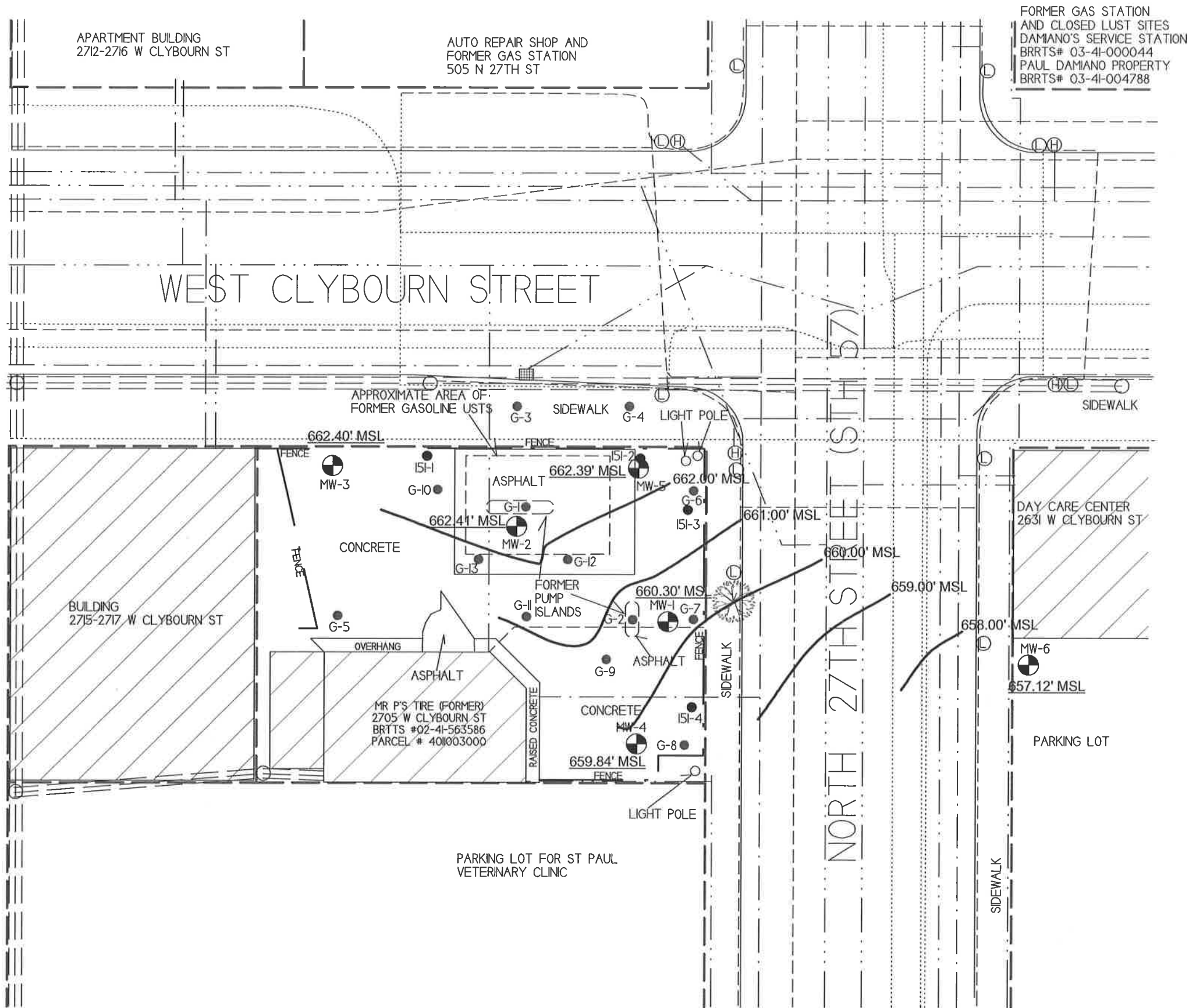


| | | |
|---|---|---|
| GROUNDWATER FLOW
DIRECTION (8/20/18) | |  |
| MR P'S TIRE | | |
|  | 709 Gillette St, Suite 3
La Crosse, WI 54603
Tel: (608) 781-8879
Fax: (608) 781-8893 | MILWAUKEE,
WISCONSIN
DRAWN BY: ED DATE: 9/2/16
MODIFIED BY: HM DATE: 2/15/17 |

NOTE: INFORMATION BASED ON AVAILABLE
DATA ACTUAL CONDITIONS MAY DIFFER

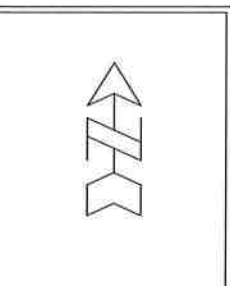


- - SOIL BORING LOCATION (PHASE 2 INVESTIGATION)
 - ⊕ - MONITORING WELL LOCATION
 - - GEOPROBE BORING LOCATION
 - - UTILITY POLE
 - ⊙ - STREET LIGHT/TRAFFIC SIGNAL
 - ⊗ - SEWER MAN HOLE
 - ▣ - STORM DRAIN
 - ⊕ - FIRE HYDRANT
-
- — — — — - WATER LINE
 - - - - - - SANITARY SEWER LINE
 - - - - - - NATURAL GAS LINE
 - - - - - - BURIED ELECTRIC LINE
 - ≡ ≡ ≡ ≡ - OVERHEAD UTILITIES
 - - - - - - TELEPHONE/CABLE LINE
 - - - - - - PROPERTY BOUNDARY



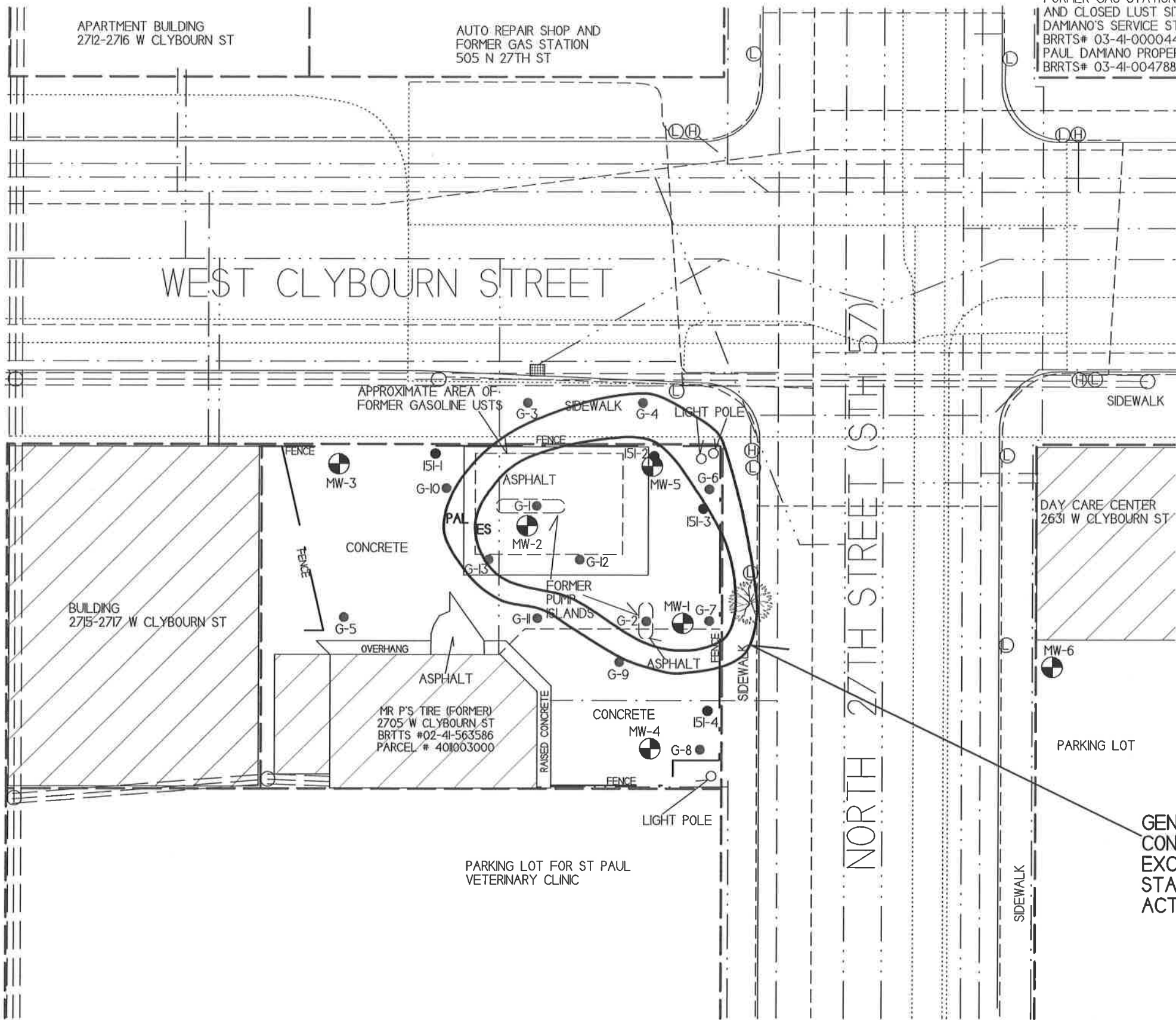
FORMER GAS STATION
AND CLOSED LUST SITES
DAMIANO'S SERVICE STATION
BRRTS# 03-4I-000044
PAUL DAMIANO PROPERTY
BRRTS# 03-4I-004788

| | |
|---|--|
| GROUNDWATER FLOW
DIRECTION (11/14/18) | |
| MR P'S TIRE | |
| | MILWAUKEE,
WISCONSIN |
| 709 Gillette St, Suite 3
La Crosse, WI 54603
Tel: (608) 781-8879
Fax: (608) 781-8893 | DRAWN BY: ED DATE: 9/2/16
MODIFIED BY: HH DATE: 2/15/17 |



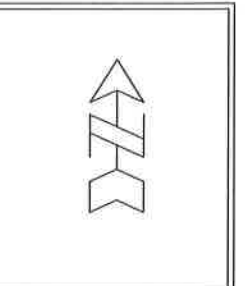
NOTE: INFORMATION BASED ON AVAILABLE
DATA ACTUAL CONDITIONS MAY DIFFER

- - SOIL BORING LOCATION (PHASE 2 INVESTIGATION)
 - ⊕ - MONITORING WELL LOCATION
 - - GEOPROBE BORING LOCATION
 - - UTILITY POLE
 - ⊙ - STREET LIGHT/TRAFFIC SIGNAL
 - ⊗ - SEWER MAN HOLE
 - ⊞ - STORM DRAIN
 - ⊕ - FIRE HYDRANT
-
- — — — — - WATER LINE
 - - - - - - SANITARY SEWER LINE
 - - - - - - NATURAL GAS LINE
 - - - - - - BURIED ELECTRIC LINE
 - ≡ ≡ ≡ ≡ ≡ - OVERHEAD UTILITIES
 - · - · - · - TELEPHONE/CABLE LINE
 - - - - - - PROPERTY BOUNDARY



FORMER GAS STATION
AND CLOSED LUST SITES
DAMIANO'S SERVICE STATION
BRRTS# 03-41-000044
PAUL DAMIANO PROPERTY
BRRTS# 03-41-004788

| | |
|---|---|
| GROUNDWATER
ISOCONCENTRATION MAP (11/14/18) | |
| MR P'S TIRE | |
|
709 Gillette St., Suite 3
La Crosse, WI 54603
Tel: (608) 781-8879
Fax: (608) 781-8893
<small>Excellence through experience™</small> | MILWAUKEE,
WISCONSIN
DRAWN BY: ED DATE: 9/2/16
MODIFIED BY: MM DATE: 2/15/17 |



NOTE: INFORMATION BASED ON AVAILABLE DATA ACTUAL CONDITIONS MAY DIFFER

- - SOIL BORING LOCATION (PHASE 2 INVESTIGATION)
- ⊗ - MONITORING WELL LOCATION
- - GEOPROBE BORING LOCATION
- - UTILITY POLE
- ⊙ - STREET LIGHT/TRAFFIC SIGNAL
- ⊕ - SEWER MAN HOLE
- ▣ - STORM DRAIN
- ⊕ - FIRE HYDRANT

- - WATER LINE
- - SANITARY SEWER LINE
- - NATURAL GAS LINE
- - BURIED ELECTRIC LINE
- =====
=====
===== - OVERHEAD UTILITIES
- - - - - TELEPHONE/CABLE LINE
- - PROPERTY BOUNDARY

GENERAL EXTENT OF PETROLEUM CONTAMINATION IN GROUNDWATER EXCEEDING NRI40 ENFORCEMENT STANDARDS (ES) AND/OR PREVENTIVE ACTION LIMITS (PAL)

A.1 Groundwater Analytical Table
Mr. P's Tires, Former BRRTS #02-41-563586

Well MW-1

PVC Elevation = 665.11 (feet) (MSL)

| Date | Water Elevation (in feet msl) | Depth to water from top of PVC (in feet) | Lead (ppb) | Benzene (ppb) | Ethyl Benzene (ppb) | MTBE (ppb) | Naphthalene (ppb) | Toluene (ppb) | Trimethylbenzenes (ppb) | Xylene (Total) (ppb) |
|--|-------------------------------|--|------------|---------------|---------------------|------------|-------------------|---------------|-------------------------|----------------------|
| 10/30/17 | 659.95 | 5.16 | <0.9 | 410 | 320 | <8.2 | 50 | 63 | 305 | 1890 |
| 01/24/18 | 659.44 | 5.67 | <0.9 | 1110 | 960 | <5.7 | 86 | 60 | 455 | 1630 |
| 08/20/18 | 659.90 | 5.21 | NS | 1260 | 1530 | <5.7 | 120 | 80 | 776 | 2760 |
| 11/14/18 | 660.30 | 4.81 | NS | 950 | 2090 | <5.7 | 269 | 189 | 1730 | 6450 |
| ENFORCEMENT STANDARD ES = Bold | | | 15 | 5 | 700 | 60 | 100 | 800 | 480 | 2000 |
| PREVENTIVE ACTION LIMIT PAL = Italics | | | <i>1.5</i> | <i>0.5</i> | <i>140</i> | <i>12</i> | <i>10</i> | <i>160</i> | <i>96</i> | <i>400</i> |

(ppb) = parts per billion (ppm) = parts per million
 NS = Not Sampled NM = Not Measured
 Note: Elevations are presented in feet mean sea level (msl).

Well MW-2

PVC Elevation = 665.87 (feet) (MSL)

| Date | Water Elevation (in feet msl) | Depth to water from top of PVC (in feet) | Lead (ppb) | Benzene (ppb) | Ethyl Benzene (ppb) | MTBE (ppb) | Naphthalene (ppb) | Toluene (ppb) | Trimethylbenzenes (ppb) | Xylene (Total) (ppb) |
|--|-------------------------------|--|------------|---------------|---------------------|------------|-------------------|---------------|-------------------------|----------------------|
| 10/30/17 | 660.60 | 5.27 | <0.9 | 540 | 110 | <8.2 | 119 | 7.6 | 71.7 | 57.3 |
| 01/24/18 | 661.56 | 4.31 | <0.9 | 680 | 92 | <5.7 | 33 | 17.2 | 23.4 | 48.3 |
| 08/20/18 | 662.28 | 3.59 | NS | 500 | 79 | <5.7 | 33 | 16 | <14.8 | 42.1 |
| 11/14/18 | 662.41 | 3.46 | NS | 266 | 32 | <5.7 | <17 | 11.2 | <14.8 | 30.2 |
| ENFORCEMENT STANDARD ES = Bold | | | 15 | 5 | 700 | 60 | 100 | 800 | 480 | 2000 |
| PREVENTIVE ACTION LIMIT PAL = Italics | | | <i>1.5</i> | <i>0.5</i> | <i>140</i> | <i>12</i> | <i>10</i> | <i>160</i> | <i>96</i> | <i>400</i> |

(ppb) = parts per billion (ppm) = parts per million
 NS = Not Sampled NM = Not Measured
 Note: Elevations are presented in feet mean sea level (msl).

Well MW-3

PVC Elevation = 666.05 (feet) (MSL)

| Date | Water Elevation (in feet msl) | Depth to water from top of PVC (in feet) | Lead (ppb) | Benzene (ppb) | Ethyl Benzene (ppb) | MTBE (ppb) | Naphthalene (ppb) | Toluene (ppb) | Trimethylbenzenes (ppb) | Xylene (Total) (ppb) |
|--|-------------------------------|--|------------|---------------|---------------------|------------|-------------------|---------------|-------------------------|----------------------|
| 10/30/17 | 654.97 | 11.08 | <0.9 | <0.17 | <0.2 | <0.82 | <2.17 | <0.67 | <2.05 | <1.95 |
| 01/24/18 | 659.07 | 6.98 | <0.9 | <0.22 | <0.53 | <0.57 | <1.7 | <0.45 | <1.48 | <1.58 |
| 08/20/18 | 662.53 | 3.52 | NS | <0.22 | <0.53 | <0.57 | <1.7 | <0.45 | <1.48 | <1.58 |
| 11/14/18 | 662.40 | 3.65 | NS | <0.22 | <0.53 | <0.57 | <1.7 | <0.45 | <1.48 | <1.58 |
| ENFORCEMENT STANDARD ES = Bold | | | 15 | 5 | 700 | 60 | 100 | 800 | 480 | 2000 |
| PREVENTIVE ACTION LIMIT PAL = Italics | | | <i>1.5</i> | <i>0.5</i> | <i>140</i> | <i>12</i> | <i>10</i> | <i>160</i> | <i>96</i> | <i>400</i> |

(ppb) = parts per billion (ppm) = parts per million
 NS = Not Sampled NM = Not Measured
 Note: Elevations are presented in feet mean sea level (msl).

A.1 Groundwater Analytical Table
Mr. P's Tires, Former BRRTS #02-41-563586

Well MW-4

PVC Elevation = 664.83 (feet) (MSL)

| Date | Water Elevation (in feet msl) | Depth to water from top of PVC (in feet) | Lead (ppb) | Benzene (ppb) | Ethyl Benzene (ppb) | MTBE (ppb) | Naphthalene (ppb) | Toluene (ppb) | Trimethylbenzenes (ppb) | Xylene (Total) (ppb) |
|--|-------------------------------|--|------------|---------------|---------------------|------------|-------------------|---------------|-------------------------|----------------------|
| 10/30/17 | 659.93 | 4.90 | <0.9 | <0.17 | <0.2 | <0.82 | <2.17 | <0.67 | <2.05 | <1.95 |
| 01/24/18 | 659.78 | 5.05 | <0.9 | <0.22 | <0.53 | <0.57 | <1.7 | <0.45 | <1.48 | <1.58 |
| 08/20/18 | 659.85 | 4.98 | NS | 0.36 | <0.53 | <0.57 | <1.7 | <0.45 | <1.48 | <1.58 |
| 11/14/18 | 659.84 | 4.99 | NS | <0.22 | <0.53 | <0.57 | <1.7 | <0.45 | <1.48 | <1.58 |
| ENFORCEMENT STANDARD ES = Bold | | | 15 | 5 | 700 | 60 | 100 | 800 | 480 | 2000 |
| PREVENTIVE ACTION LIMIT PAL = Italics | | | <i>1.5</i> | <i>0.5</i> | <i>140</i> | <i>12</i> | <i>10</i> | <i>160</i> | <i>96</i> | <i>400</i> |

(ppb) = parts per billion (ppm) = parts per million

NS = Not Sampled NM = Not Measured

Note: Elevations are presented in feet mean sea level (msl).

Well MW-5

PVC Elevation = 666.09 (feet) (MSL)

| Date | Water Elevation (in feet msl) | Depth to water from top of PVC (in feet) | Lead (ppb) | Benzene (ppb) | Ethyl Benzene (ppb) | MTBE (ppb) | Naphthalene (ppb) | Toluene (ppb) | Trimethylbenzenes (ppb) | Xylene (Total) (ppb) |
|--|-------------------------------|--|------------|---------------|---------------------|------------|-------------------|---------------|-------------------------|----------------------|
| 10/30/17 | 662.31 | 3.78 | 2.7 | 34 | 46 | <0.82 | 59 | 2.27 | 31.5 | 13.85 |
| 01/24/18 | 660.15 | 5.94 | 1.2 | 43 | 41 | <0.57 | 22.8 | 6.2 | 7 | 7.29 |
| 08/20/18 | 662.28 | 3.81 | NS | 72 | 27.6 | <0.57 | 22.1 | 8.5 | 5.44 | 11.87 |
| 11/14/18 | 662.39 | 3.70 | NS | 43 | 18 | <0.57 | 18 | 6.0 | 2.96 | 6.25 |
| ENFORCEMENT STANDARD ES = Bold | | | 15 | 5 | 700 | 60 | 100 | 800 | 480 | 2000 |
| PREVENTIVE ACTION LIMIT PAL = Italics | | | <i>1.5</i> | <i>0.5</i> | <i>140</i> | <i>12</i> | <i>10</i> | <i>160</i> | <i>96</i> | <i>400</i> |

(ppb) = parts per billion (ppm) = parts per million

NS = Not Sampled NM = Not Measured

Note: Elevations are presented in feet mean sea level (msl).

Well MW-6

PVC Elevation = 665.89 (feet) (MSL)

| Date | Water Elevation (in feet msl) | Depth to water from top of PVC (in feet) | Lead (ppb) | Benzene (ppb) | Ethyl Benzene (ppb) | MTBE (ppb) | Naphthalene (ppb) | Toluene (ppb) | Trimethylbenzenes (ppb) | Xylene (Total) (ppb) |
|--|-------------------------------|--|------------|---------------|---------------------|------------|-------------------|---------------|-------------------------|----------------------|
| 10/30/17 | 663.14 | 2.75 | <0.9 | <0.17 | <0.2 | <0.82 | <2.17 | <0.67 | <2.05 | <1.95 |
| 01/24/18 | 663.43 | 2.46 | <0.9 | <0.22 | <0.53 | <0.57 | <1.7 | <0.45 | <1.48 | <1.58 |
| 08/20/18 | 654.77 | 11.12 | NS | 0.28 | <0.53 | <0.57 | <1.7 | <0.45 | <1.48 | <1.58 |
| 11/14/18 | 657.12 | 8.77 | NS | 0.294 | <0.53 | <0.57 | <1.7 | 1.01 | <1.48 | 2.08 |
| ENFORCEMENT STANDARD ES = Bold | | | 15 | 5 | 700 | 60 | 100 | 800 | 480 | 2000 |
| PREVENTIVE ACTION LIMIT PAL = Italics | | | <i>1.5</i> | <i>0.5</i> | <i>140</i> | <i>12</i> | <i>10</i> | <i>160</i> | <i>96</i> | <i>400</i> |

(ppb) = parts per billion (ppm) = parts per million

NS = Not Sampled NM = Not Measured

Note: Elevations are presented in feet mean sea level (msl).

A.6 Water Level Elevations
Mr. P's Tires, Former BRRS #02-41-563586
Milwaukee, Wisconsin

| | MW-1 | MW-2 | MW-3 | MW-4 | MW-5 | MW-6 |
|--|-------------|-------------|-------------|-------------|-------------|-------------|
| Ground Surface (feet msl) | 665.54 | 666.27 | 666.47 | 665.19 | 666.49 | 666.23 |
| PVC top (feet msl) | 665.11 | 665.87 | 666.05 | 664.83 | 666.09 | 665.89 |
| Well Depth (feet) | 14.00 | 14.00 | 14.00 | 14.00 | 14.00 | 14.00 |
| Top of screen (feet msl) | 661.54 | 662.27 | 662.47 | 661.19 | 662.49 | 662.23 |
| Bottom of screen (feet msl) | 651.54 | 652.27 | 652.47 | 651.19 | 652.49 | 652.23 |
| Depth to Water From Top of PVC (feet) | | | | | | |
| 10/30/17 | 5.16 | 5.27 | 11.08 | 4.90 | 3.78 | 2.75 |
| 01/24/18 | 5.67 | 4.31 | 6.98 | 5.05 | 5.94 | 2.46 |
| 08/20/18 | 5.21 | 3.59 | 3.52 | 4.98 | 3.81 | 11.12 |
| 11/14/18 | 4.81 | 3.46 | 3.65 | 4.99 | 3.70 | 8.77 |
| Depth to Water From Ground Surface (feet) | | | | | | |
| 10/30/17 | 5.59 | 5.67 | 11.50 | 5.26 | 4.18 | 3.09 |
| 01/24/18 | 6.10 | 4.71 | 7.40 | 5.41 | 6.34 | 2.80 |
| 08/20/18 | 5.64 | 3.99 | 3.94 | 5.34 | 4.21 | 11.46 |
| 11/14/18 | 5.24 | 3.86 | 4.07 | 5.35 | 4.10 | 9.11 |
| Groundwater Elevation (feet msl) | | | | | | |
| 10/30/17 | 659.95 | 660.60 | 654.97 | 659.93 | 662.31 | 663.14 |
| 01/24/18 | 659.44 | 661.56 | 659.07 | 659.78 | 660.15 | 663.43 |
| 08/20/18 | 659.90 | 662.28 | 662.53 | 659.85 | 662.28 | 654.77 |
| 11/14/18 | 660.30 | 662.41 | 662.40 | 659.84 | 662.39 | 657.12 |

A.7 Other
Groundwater NA Indicator Results
Mr. P's Tires, Former BRRTS #02-41-563586

Well MW-1

| Date | Dissolved Oxygen (ppm) | pH | ORP | Temp (C) | Specific Conductance | Nitrate + Nitrite (ppm) | Total Sulfate (ppm) | Dissolved Iron (ppm) | Manganese (ppb) |
|--|------------------------|------|-------|----------|----------------------|-------------------------|---------------------|----------------------|-----------------|
| 10/30/17 | 0.22 | 7.52 | 233 | 17.1 | 1938 | <0.17 | 35.0 | 0.07 | 3610 |
| 01/24/18 | 1.19 | 6.82 | -155 | 8.4 | 1782 | NS | NS | NS | NS |
| 08/20/18 | 2.63 | 7.05 | 40.5 | 21.47 | 1532 | NS | NS | NS | NS |
| 11/14/18 | 2.90 | 8.04 | -26.3 | 14.66 | 1662 | NS | NS | NS | NS |
| ENFORCEMENT STANDARD = ES – Bold | | | | | | 10 | - | - | 300 |
| PREVENTIVE ACTION LIMIT = PAL - Italics | | | | | | 2 | - | - | 60 |

(ppb) = parts per billion (ppm) = parts per million
 NS = Not Sampled NM = Not Measured ORP = Oxidation Reduction Potential
 Note: Elevations are presented in feet mean sea level (msl).

Well MW-2

| Date | Dissolved Oxygen (ppm) | pH | ORP | Temp (C) | Specific Conductance | Nitrate + Nitrite (ppm) | Total Sulfate (ppm) | Dissolved Iron (ppm) | Manganese (ppb) |
|--|------------------------|------|-------|----------|----------------------|-------------------------|---------------------|----------------------|-----------------|
| 10/30/17 | 0.31 | 7.99 | 236 | 17.4 | 554 | <0.17 | 9.84 | 0.24 | 1800 |
| 01/24/18 | 0.96 | 6.95 | -61 | 7.4 | 6405 | NS | NS | NS | NS |
| 08/20/18 | 2.46 | 7.03 | 35.8 | 21.94 | 8272 | NS | NS | NS | NS |
| 11/14/18 | 3.07 | 7.63 | -21.1 | 11.28 | 6434 | NS | NS | NS | NS |
| ENFORCEMENT STANDARD = ES – Bold | | | | | | 10 | - | - | 300 |
| PREVENTIVE ACTION LIMIT = PAL - Italics | | | | | | 2 | - | - | 60 |

(ppb) = parts per billion (ppm) = parts per million
 NS = Not Sampled NM = Not Measured ORP = Oxidation Reduction Potential
 Note: Elevations are presented in feet mean sea level (msl).

Well MW-3

| Date | Dissolved Oxygen (ppm) | pH | ORP | Temp (C) | Specific Conductance | Nitrate + Nitrite (ppm) | Total Sulfate (ppm) | Dissolved Iron (ppm) | Manganese (ppb) |
|--|------------------------|------|-------|----------|----------------------|-------------------------|---------------------|----------------------|-----------------|
| 10/30/17 | 3.46 | 9.04 | 247 | 15.6 | 1248 | 0.37 | 169 | 0.03 | 2490 |
| 01/24/18 | 1.74 | 7.35 | 160 | 9.5 | 1402 | NS | NS | NS | NS |
| 08/20/18 | 2.51 | 7.05 | 38.4 | 22.86 | 1491 | NS | NS | NS | NS |
| 11/14/18 | 3.01 | 7.58 | -23.7 | 14.08 | 1571 | NS | NS | NS | NS |
| ENFORCEMENT STANDARD = ES – Bold | | | | | | 10 | - | - | 300 |
| PREVENTIVE ACTION LIMIT = PAL - Italics | | | | | | 2 | - | - | 60 |

(ppb) = parts per billion (ppm) = parts per million
 NS = Not Sampled NM = Not Measured ORP = Oxidation Reduction Potential
 Note: Elevations are presented in feet mean sea level (msl).

A.7 Other
Groundwater NA Indicator Results
Mr. P's Tires, Former BRRTS #02-41-563586

Well MW-4

| Date | Dissolved Oxygen (ppm) | pH | ORP | Temp (C) | Specific Conductance | Nitrate + Nitrite (ppm) | Total Sulfate (ppm) | Dissolved Iron (ppm) | Man-ganese (ppb) |
|--|------------------------|------|-------|-----------|----------------------|-------------------------|---------------------|----------------------|------------------|
| 10/30/17 | 1.00 | 7.93 | 253 | 18.3 | 1103 | <0.17 | 32.7 | <0.03 | 1100 |
| 01/24/18 | 1.41 | 7.25 | 42.4 | 8.43 | 974 | NS | NS | NS | NS |
| 08/20/18 | 2.55 | 7.17 | 33.8 | 20.98 | 1077 | NS | NS | NS | NS |
| 11/14/18 | 3.01 | 7.94 | -21.3 | 14.00 | 1136 | NS | NS | NS | NS |
| ENFORCEMENT STANDARD = ES – Bold | | | | | | 10 | - | - | 300 |
| PREVENTIVE ACTION LIMIT = <i>PAL - Italics</i> | | | | | | 2 | - | - | 60 |

(ppb) = parts per billion (ppm) = parts per million
 NS = Not Sampled NM = Not Measured ORP = Oxidation Reduction Potential
 Note: Elevations are presented in feet mean sea level (msl).

Well MW-5

| Date | Dissolved Oxygen (ppm) | pH | ORP | Temp (C) | Specific Conductance | Nitrate + Nitrite (ppm) | Total Sulfate (ppm) | Dissolved Iron (ppm) | Man-ganese (ppb) |
|--|------------------------|------|-------|-----------|----------------------|-------------------------|---------------------|----------------------|------------------|
| 10/30/17 | 0.31 | 8.21 | 225 | 16.2 | 2065 | <0.17 | 9.38 | <0.03 | 685 |
| 01/24/18 | 1.53 | 7.16 | -28 | 7.6 | 2643 | NS | NS | NS | NS |
| 08/20/18 | 2.44 | 7.11 | 39.2 | 22.40 | 4310 | NS | NS | NS | NS |
| 11/14/18 | 3.00 | 8.06 | -25.0 | 13.42 | 2992 | NS | NS | NS | NS |
| ENFORCEMENT STANDARD = ES – Bold | | | | | | 10 | - | - | 300 |
| PREVENTIVE ACTION LIMIT = <i>PAL - Italics</i> | | | | | | 2 | - | - | 60 |

(ppb) = parts per billion (ppm) = parts per million
 NS = Not Sampled NM = Not Measured ORP = Oxidation Reduction Potential
 Note: Elevations are presented in feet mean sea level (msl).

Well MW-6

| Date | Dissolved Oxygen (ppm) | pH | ORP | Temp (C) | Specific Conductance | Nitrate + Nitrite (ppm) | Total Sulfate (ppm) | Dissolved Iron (ppm) | Man-ganese (ppb) |
|--|------------------------|------|-------|-----------|----------------------|-------------------------|---------------------|----------------------|------------------|
| 10/30/17 | 12.30 | 9.00 | 243 | 12.0 | 280 | 0.19 | 27.0 | <0.03 | 11.8 |
| 01/24/18 | 15.49 | 8.41 | 362 | 2.2 | 285 | NS | NS | NS | NS |
| 08/20/18 | 3.10 | 6.87 | 42.7 | 15.43 | 732 | NS | NS | NS | NS |
| 11/14/18 | 3.05 | 7.24 | -14.3 | 12.73 | 507 | NS | NS | NS | NS |
| ENFORCEMENT STANDARD = ES – Bold | | | | | | 10 | - | - | 300 |
| PREVENTIVE ACTION LIMIT = <i>PAL - Italics</i> | | | | | | 2 | - | - | 60 |

(ppb) = parts per billion (ppm) = parts per million
 NS = Not Sampled NM = Not Measured ORP = Oxidation Reduction Potential
 Note: Elevations are presented in feet mean sea level (msl).

Synergy Environmental Lab,

1990 Prospect Ct., Appleton, WI 54914 *P 920-830-2455 * F 920-733-0631

MARK PACHEFSKY
 MARK PACHEFSKY
 4475 CLUB DRIVE
 SLINGER, WI 53086

Report Date 24-Aug-18

Project Name MR. P'S TIRES
 Project #

Invoice # E35105

Lab Code 5035105A
 Sample ID MW-6
 Sample Matrix Water
 Sample Date 8/20/2018

| | Result | Unit | LOD | LOQ | Dil | Method | Ext Date | Run Date | Analyst | Code |
|--------------------------------|----------|------|------|------|-----|------------|----------|-----------|---------|------|
| Organic | | | | | | | | | | |
| PVOC + Naphthalene | | | | | | | | | | |
| Benzene | 0.28 "J" | ug/l | 0.22 | 0.69 | 1 | GRO95/8021 | | 8/22/2018 | CJR | 1 |
| Ethylbenzene | < 0.53 | ug/l | 0.53 | 1.69 | 1 | GRO95/8021 | | 8/22/2018 | CJR | 1 |
| Methyl tert-butyl ether (MTBE) | < 0.57 | ug/l | 0.57 | 1.82 | 1 | GRO95/8021 | | 8/22/2018 | CJR | 1 |
| Naphthalene | < 1.7 | ug/l | 1.7 | 5.38 | 1 | GRO95/8021 | | 8/22/2018 | CJR | 1 |
| Toluene | < 0.45 | ug/l | 0.45 | 1.45 | 1 | GRO95/8021 | | 8/22/2018 | CJR | 1 |
| 1,2,4-Trimethylbenzene | < 0.73 | ug/l | 0.73 | 2.33 | 1 | GRO95/8021 | | 8/22/2018 | CJR | 1 |
| 1,3,5-Trimethylbenzene | < 0.75 | ug/l | 0.75 | 2.39 | 1 | GRO95/8021 | | 8/22/2018 | CJR | 1 |
| m&p-Xylene | < 1 | ug/l | 1 | 3.17 | 1 | GRO95/8021 | | 8/22/2018 | CJR | 1 |
| o-Xylene | < 0.58 | ug/l | 0.58 | 1.84 | 1 | GRO95/8021 | | 8/22/2018 | CJR | 1 |

Lab Code 5035105B
 Sample ID MW-3
 Sample Matrix Water
 Sample Date 8/20/2018

| | Result | Unit | LOD | LOQ | Dil | Method | Ext Date | Run Date | Analyst | Code |
|--------------------------------|--------|------|------|------|-----|------------|----------|-----------|---------|------|
| Organic | | | | | | | | | | |
| PVOC + Naphthalene | | | | | | | | | | |
| Benzene | < 0.22 | ug/l | 0.22 | 0.69 | 1 | GRO95/8021 | | 8/22/2018 | CJR | 1 |
| Ethylbenzene | < 0.53 | ug/l | 0.53 | 1.69 | 1 | GRO95/8021 | | 8/22/2018 | CJR | 1 |
| Methyl tert-butyl ether (MTBE) | < 0.57 | ug/l | 0.57 | 1.82 | 1 | GRO95/8021 | | 8/22/2018 | CJR | 1 |
| Naphthalene | < 1.7 | ug/l | 1.7 | 5.38 | 1 | GRO95/8021 | | 8/22/2018 | CJR | 1 |
| Toluene | < 0.45 | ug/l | 0.45 | 1.45 | 1 | GRO95/8021 | | 8/22/2018 | CJR | 1 |
| 1,2,4-Trimethylbenzene | < 0.73 | ug/l | 0.73 | 2.33 | 1 | GRO95/8021 | | 8/22/2018 | CJR | 1 |
| 1,3,5-Trimethylbenzene | < 0.75 | ug/l | 0.75 | 2.39 | 1 | GRO95/8021 | | 8/22/2018 | CJR | 1 |
| m&p-Xylene | < 1 | ug/l | 1 | 3.17 | 1 | GRO95/8021 | | 8/22/2018 | CJR | 1 |
| o-Xylene | < 0.58 | ug/l | 0.58 | 1.84 | 1 | GRO95/8021 | | 8/22/2018 | CJR | 1 |

Project Name MR. P'S TIRES
Project #

Invoice # E35105

Lab Code 5035105C
Sample ID MW-4
Sample Matrix Water
Sample Date 8/20/2018

| | Result | Unit | LOD | LOQ | Dil | Method | Ext Date | Run Date | Analyst | Code |
|--------------------------------|----------|------|------|------|-----|------------|----------|-----------|---------|------|
| Organic | | | | | | | | | | |
| PVOC + Naphthalene | | | | | | | | | | |
| Benzene | 0.36 "J" | ug/l | 0.22 | 0.69 | 1 | GRO95/8021 | | 8/22/2018 | CJR | I |
| Ethylbenzene | < 0.53 | ug/l | 0.53 | 1.69 | 1 | GRO95/8021 | | 8/22/2018 | CJR | I |
| Methyl tert-butyl ether (MTBE) | < 0.57 | ug/l | 0.57 | 1.82 | 1 | GRO95/8021 | | 8/22/2018 | CJR | I |
| Naphthalene | < 1.7 | ug/l | 1.7 | 5.38 | 1 | GRO95/8021 | | 8/22/2018 | CJR | I |
| Toluene | < 0.45 | ug/l | 0.45 | 1.45 | 1 | GRO95/8021 | | 8/22/2018 | CJR | I |
| 1,2,4-Trimethylbenzene | < 0.73 | ug/l | 0.73 | 2.33 | 1 | GRO95/8021 | | 8/22/2018 | CJR | I |
| 1,3,5-Trimethylbenzene | < 0.75 | ug/l | 0.75 | 2.39 | 1 | GRO95/8021 | | 8/22/2018 | CJR | I |
| m&p-Xylene | < 1 | ug/l | 1 | 3.17 | 1 | GRO95/8021 | | 8/22/2018 | CJR | I |
| o-Xylene | < 0.58 | ug/l | 0.58 | 1.84 | 1 | GRO95/8021 | | 8/22/2018 | CJR | I |

Lab Code 5035105D
Sample ID MW-5
Sample Matrix Water
Sample Date 8/20/2018

| | Result | Unit | LOD | LOQ | Dil | Method | Ext Date | Run Date | Analyst | Code |
|--------------------------------|----------|------|------|------|-----|------------|----------|-----------|---------|------|
| Organic | | | | | | | | | | |
| PVOC + Naphthalene | | | | | | | | | | |
| Benzene | 72 | ug/l | 0.22 | 0.69 | 1 | GRO95/8021 | | 8/23/2018 | CJR | I |
| Ethylbenzene | 27.6 | ug/l | 0.53 | 1.69 | 1 | GRO95/8021 | | 8/23/2018 | CJR | I |
| Methyl tert-butyl ether (MTBE) | < 0.57 | ug/l | 0.57 | 1.82 | 1 | GRO95/8021 | | 8/23/2018 | CJR | I |
| Naphthalene | 22.1 | ug/l | 1.7 | 5.38 | 1 | GRO95/8021 | | 8/23/2018 | CJR | I |
| Toluene | 8.5 | ug/l | 0.45 | 1.45 | 1 | GRO95/8021 | | 8/23/2018 | CJR | I |
| 1,2,4-Trimethylbenzene | 4.2 | ug/l | 0.73 | 2.33 | 1 | GRO95/8021 | | 8/23/2018 | CJR | I |
| 1,3,5-Trimethylbenzene | 1.24 "J" | ug/l | 0.75 | 2.39 | 1 | GRO95/8021 | | 8/23/2018 | CJR | I |
| m&p-Xylene | 9.2 | ug/l | 1 | 3.17 | 1 | GRO95/8021 | | 8/23/2018 | CJR | I |
| o-Xylene | 2.67 | ug/l | 0.58 | 1.84 | 1 | GRO95/8021 | | 8/23/2018 | CJR | I |

Lab Code 5035105E
Sample ID MW-2
Sample Matrix Water
Sample Date 8/20/2018

| | Result | Unit | LOD | LOQ | Dil | Method | Ext Date | Run Date | Analyst | Code |
|--------------------------------|---------|------|-----|------|-----|------------|----------|-----------|---------|------|
| Organic | | | | | | | | | | |
| PVOC + Naphthalene | | | | | | | | | | |
| Benzene | 500 | ug/l | 2.2 | 6.9 | 10 | GRO95/8021 | | 8/23/2018 | CJR | I |
| Ethylbenzene | 79 | ug/l | 5.3 | 16.9 | 10 | GRO95/8021 | | 8/23/2018 | CJR | I |
| Methyl tert-butyl ether (MTBE) | < 5.7 | ug/l | 5.7 | 18.2 | 10 | GRO95/8021 | | 8/23/2018 | CJR | I |
| Naphthalene | 33 "J" | ug/l | 17 | 53.8 | 10 | GRO95/8021 | | 8/23/2018 | CJR | I |
| Toluene | 16 | ug/l | 4.5 | 14.5 | 10 | GRO95/8021 | | 8/23/2018 | CJR | I |
| 1,2,4-Trimethylbenzene | < 7.3 | ug/l | 7.3 | 23.3 | 10 | GRO95/8021 | | 8/23/2018 | CJR | I |
| 1,3,5-Trimethylbenzene | < 7.5 | ug/l | 7.5 | 23.9 | 10 | GRO95/8021 | | 8/23/2018 | CJR | I |
| m&p-Xylene | 36 | ug/l | 10 | 31.7 | 10 | GRO95/8021 | | 8/23/2018 | CJR | I |
| o-Xylene | 6.1 "J" | ug/l | 5.8 | 18.4 | 10 | GRO95/8021 | | 8/23/2018 | CJR | I |

Project Name MR. P'S TIRES
 Project #

Invoice # E35105

Lab Code 5035105F
 Sample ID MW-1
 Sample Matrix Water
 Sample Date 8/20/2018

| | Result | Unit | LOD | LOQ | Dil | Method | Ext Date | Run Date | Analyst | Code |
|--------------------------------|--------|------|-----|------|-----|------------|----------|-----------|---------|------|
| Organic | | | | | | | | | | |
| PVOC + Naphthalene | | | | | | | | | | |
| Benzene | 1260 | ug/l | 2.2 | 6.9 | 10 | GRO95/8021 | | 8/23/2018 | CJR | 1 |
| Ethylbenzene | 1530 | ug/l | 5.3 | 16.9 | 10 | GRO95/8021 | | 8/23/2018 | CJR | 1 |
| Methyl tert-butyl ether (MTBE) | < 5.7 | ug/l | 5.7 | 18.2 | 10 | GRO95/8021 | | 8/23/2018 | CJR | 1 |
| Naphthalene | 120 | ug/l | 17 | 53.8 | 10 | GRO95/8021 | | 8/23/2018 | CJR | 1 |
| Toluene | 80 | ug/l | 4.5 | 14.5 | 10 | GRO95/8021 | | 8/23/2018 | CJR | 1 |
| 1,2,4-Trimethylbenzene | 610 | ug/l | 7.3 | 23.3 | 10 | GRO95/8021 | | 8/23/2018 | CJR | 1 |
| 1,3,5-Trimethylbenzene | 166 | ug/l | 7.5 | 23.9 | 10 | GRO95/8021 | | 8/23/2018 | CJR | 1 |
| m&p-Xylene | 2290 | ug/l | 10 | 31.7 | 10 | GRO95/8021 | | 8/23/2018 | CJR | 1 |
| o-Xylene | 470 | ug/l | 5.8 | 18.4 | 10 | GRO95/8021 | | 8/23/2018 | CJR | 1 |

Lab Code 5035105G
 Sample ID TRIP BLANK
 Sample Matrix Water
 Sample Date 8/20/2018

| | Result | Unit | LOD | LOQ | Dil | Method | Ext Date | Run Date | Analyst | Code |
|--------------------------------|--------|------|------|------|-----|------------|----------|-----------|---------|------|
| Organic | | | | | | | | | | |
| PVOC + Naphthalene | | | | | | | | | | |
| Benzene | < 0.22 | ug/l | 0.22 | 0.69 | 1 | GRO95/8021 | | 8/22/2018 | CJR | 1 |
| Ethylbenzene | < 0.53 | ug/l | 0.53 | 1.69 | 1 | GRO95/8021 | | 8/22/2018 | CJR | 1 |
| Methyl tert-butyl ether (MTBE) | < 0.57 | ug/l | 0.57 | 1.82 | 1 | GRO95/8021 | | 8/22/2018 | CJR | 1 |
| Naphthalene | < 1.7 | ug/l | 1.7 | 5.38 | 1 | GRO95/8021 | | 8/22/2018 | CJR | 1 |
| Toluene | < 0.45 | ug/l | 0.45 | 1.45 | 1 | GRO95/8021 | | 8/22/2018 | CJR | 1 |
| 1,2,4-Trimethylbenzene | < 0.73 | ug/l | 0.73 | 2.33 | 1 | GRO95/8021 | | 8/22/2018 | CJR | 1 |
| 1,3,5-Trimethylbenzene | < 0.75 | ug/l | 0.75 | 2.39 | 1 | GRO95/8021 | | 8/22/2018 | CJR | 1 |
| m&p-Xylene | < 1 | ug/l | 1 | 3.17 | 1 | GRO95/8021 | | 8/22/2018 | CJR | 1 |
| o-Xylene | < 0.58 | ug/l | 0.58 | 1.84 | 1 | GRO95/8021 | | 8/22/2018 | CJR | 1 |

"J" Flag: Analyte detected between LOD and LOQ

LOD Limit of Detection

LOQ Limit of Quantitation

Code **Comment**

1 Laboratory QC within limits.

All solid sample results reported on a dry weight basis unless otherwise indicated. All LOD's and LOQ's are adjusted for dilutions but not dry weight. Subcontracted results are denoted by SUB in the analyst field.

Authorized Signature

Michael Ricker

Synergy

Environmental Lab, Inc.

1990 Prospect Ct. • Appleton, WI 54914
920-830-2455 • FAX 920-733-0631

Chain # N^o 3579

Page 1 of 1

Sample Handling Request

Rush Analysis Date Required
(Rushes accepted only with prior authorization)

Normal Turn Around

Lab I.D. #
Account No.: Quote No.:
Project #:
Sampler: (signature) *Max Wannon*

Project (Name / Location): *Mr. P's Times, Former/Milwaukee, WI*
Reports To: *Mark Pachefsky* Invoice To: *Mark Pachefsky*
Company: *% METCO*
Address: *4475 Club Dr.* Address: *709 Gillette Street, Suite 3*
City State Zip: *Slinger, WI 53086* City State Zip: *La Crosse, WI 54603*
Phone: *414-336-6053*
FAX:

| Analysis Requested | | | | | | | | | | | | Other Analysis | | |
|----------------------|----------------------|------|-----------------|--------------|----------------|-----|-----------------|-------------------------------------|---------|------------------------|--------------------|----------------|---------------|----------|
| DRO (Mod DRO Sep 95) | GRO (Mod GRO Sep 95) | LEAD | NITRATE/NITRITE | OIL & GREASE | PAH (EPA 8270) | PCB | PVOC (EPA 8021) | PVOC + NAPHTHALENE | SULFATE | TOTAL SUSPENDED SOLIDS | VOC DW (EPA 524.2) | VOC (EPA 8260) | 8-RCRA METALS | PID/ FID |
| | | | | | | | | <input checked="" type="checkbox"/> | | | | | | |
| | | | | | | | | <input checked="" type="checkbox"/> | | | | | | |
| | | | | | | | | <input checked="" type="checkbox"/> | | | | | | |
| | | | | | | | | <input checked="" type="checkbox"/> | | | | | | |
| | | | | | | | | <input checked="" type="checkbox"/> | | | | | | |
| | | | | | | | | <input checked="" type="checkbox"/> | | | | | | |
| | | | | | | | | <input checked="" type="checkbox"/> | | | | | | |
| | | | | | | | | <input checked="" type="checkbox"/> | | | | | | |
| | | | | | | | | <input checked="" type="checkbox"/> | | | | | | |
| | | | | | | | | <input checked="" type="checkbox"/> | | | | | | |

| Lab I.D. | Sample I.D. | Collection Date | Time | Comp | Grab | Filtered Y/N | No. of Containers | Sample Type (Matrix)* | Preservation |
|-----------------|------------------|-----------------|--------------|------|------|--------------|-------------------|-----------------------|--------------|
| <i>S05105 A</i> | <i>MW-6</i> | <i>8/20/18</i> | <i>10:30</i> | | | <i>N</i> | <i>3</i> | <i>GW</i> | <i>HCl</i> |
| <i>B</i> | <i>MW-3</i> | | <i>11:00</i> | | | | | | |
| <i>C</i> | <i>MW-4</i> | | <i>11:30</i> | | | | | | |
| <i>D</i> | <i>MW-5</i> | | <i>12:00</i> | | | | | | |
| <i>E</i> | <i>MW-2</i> | | <i>12:30</i> | | | | | | |
| <i>F</i> | <i>MW-1</i> | <i>✓</i> | <i>12:55</i> | | | | | | |
| <i>G</i> | <i>Tip BlgAK</i> | | | | | <i>✓</i> | <i>1</i> | | <i>✓</i> |

Comments/Special Instructions (*Specify groundwater "GW", Drinking Water "DW", Waste Water "WW", Soil "S", Air "A", Oil, Sludge etc.)
Lab to send copy of report to METCO/Jason P. (Invoice to METCO)
** U&C rates apply*
** Agent Status*

Sample Integrity - To be completed by receiving lab.
Method of Shipment: *GC*
Temp. of Temp. Blank _____ °C On Ice:
Cooler seal intact upon receipt: Yes _____ No

Relinquished By: (sign) *[Signature]* Time: *7:00AM* Date: *8/21/18*

Received in Laboratory By: *[Signature]* Time: *8:00* Date: *8/22/18*

Synergy Environmental Lab,

1990 Prospect Ct., Appleton, WI 54914 *P 920-830-2455 * F 920-733-0631

MARK PACHEFSKY
MARK PACHEFSKY
4475 CLUB DRIVE
SLINGER, WI 53086

Report Date 23-Nov-18

Project Name MR. P'S TIRES, FMR
Project #

Invoice # E35498

Lab Code 5035498A
Sample ID MW-3
Sample Matrix Water
Sample Date 11/14/2018

| | Result | Unit | LOD | LOQ | Dil | Method | Ext Date | Run Date | Analyst | Code |
|--------------------------------|--------|------|------|------|-----|------------|----------|------------|---------|------|
| Organic | | | | | | | | | | |
| PVOC + Naphthalene | | | | | | | | | | |
| Benzene | < 0.22 | ug/l | 0.22 | 0.69 | 1 | GRO95/8021 | | 11/20/2018 | CJR | 1 |
| Ethylbenzene | < 0.53 | ug/l | 0.53 | 1.69 | 1 | GRO95/8021 | | 11/20/2018 | CJR | 1 |
| Methyl tert-butyl ether (MTBE) | < 0.57 | ug/l | 0.57 | 1.82 | 1 | GRO95/8021 | | 11/20/2018 | CJR | 1 |
| Naphthalene | < 1.7 | ug/l | 1.7 | 5.38 | 1 | GRO95/8021 | | 11/20/2018 | CJR | 1 |
| Toluene | < 0.45 | ug/l | 0.45 | 1.45 | 1 | GRO95/8021 | | 11/20/2018 | CJR | 1 |
| 1,2,4-Trimethylbenzene | < 0.73 | ug/l | 0.73 | 2.33 | 1 | GRO95/8021 | | 11/20/2018 | CJR | 1 |
| 1,3,5-Trimethylbenzene | < 0.75 | ug/l | 0.75 | 2.39 | 1 | GRO95/8021 | | 11/20/2018 | CJR | 1 |
| m&p-Xylene | < 1 | ug/l | 1 | 3.17 | 1 | GRO95/8021 | | 11/20/2018 | CJR | 1 |
| o-Xylene | < 0.58 | ug/l | 0.58 | 1.84 | 1 | GRO95/8021 | | 11/20/2018 | CJR | 1 |

Project Name MR. P'S TIRES, FMR
 Project #

Invoice # E35498

Lab Code 5035498B
 Sample ID MW-6
 Sample Matrix Water
 Sample Date 11/14/2018

| | Result | Unit | LOD | LOQ | Dil | Method | Ext Date | Run Date | Analyst | Code |
|--------------------------------|-----------|------|------|------|-----|------------|----------|------------|---------|------|
| Organic | | | | | | | | | | |
| PVOC + Naphthalene | | | | | | | | | | |
| Benzene | 0.294 "J" | ug/l | 0.22 | 0.69 | 1 | GRO95/8021 | | 11/20/2018 | CJR | 1 |
| Ethylbenzene | < 0.53 | ug/l | 0.53 | 1.69 | 1 | GRO95/8021 | | 11/20/2018 | CJR | 1 |
| Methyl tert-butyl ether (MTBE) | < 0.57 | ug/l | 0.57 | 1.82 | 1 | GRO95/8021 | | 11/20/2018 | CJR | 1 |
| Naphthalene | < 1.7 | ug/l | 1.7 | 5.38 | 1 | GRO95/8021 | | 11/20/2018 | CJR | 1 |
| Toluene | 1.01 "J" | ug/l | 0.45 | 1.45 | 1 | GRO95/8021 | | 11/20/2018 | CJR | 1 |
| 1,2,4-Trimethylbenzene | < 0.73 | ug/l | 0.73 | 2.33 | 1 | GRO95/8021 | | 11/20/2018 | CJR | 1 |
| 1,3,5-Trimethylbenzene | < 0.75 | ug/l | 0.75 | 2.39 | 1 | GRO95/8021 | | 11/20/2018 | CJR | 1 |
| m&p-Xylene | 1.3 "J" | ug/l | 1 | 3.17 | 1 | GRO95/8021 | | 11/20/2018 | CJR | 1 |
| o-Xylene | 0.78 "J" | ug/l | 0.58 | 1.84 | 1 | GRO95/8021 | | 11/20/2018 | CJR | 1 |

Lab Code 5035498C
 Sample ID MW-4
 Sample Matrix Water
 Sample Date 11/14/2018

| | Result | Unit | LOD | LOQ | Dil | Method | Ext Date | Run Date | Analyst | Code |
|--------------------------------|--------|------|------|------|-----|------------|----------|------------|---------|------|
| Organic | | | | | | | | | | |
| PVOC + Naphthalene | | | | | | | | | | |
| Benzene | < 0.22 | ug/l | 0.22 | 0.69 | 1 | GRO95/8021 | | 11/20/2018 | CJR | 1 |
| Ethylbenzene | < 0.53 | ug/l | 0.53 | 1.69 | 1 | GRO95/8021 | | 11/20/2018 | CJR | 1 |
| Methyl tert-butyl ether (MTBE) | < 0.57 | ug/l | 0.57 | 1.82 | 1 | GRO95/8021 | | 11/20/2018 | CJR | 1 |
| Naphthalene | < 1.7 | ug/l | 1.7 | 5.38 | 1 | GRO95/8021 | | 11/20/2018 | CJR | 1 |
| Toluene | < 0.45 | ug/l | 0.45 | 1.45 | 1 | GRO95/8021 | | 11/20/2018 | CJR | 1 |
| 1,2,4-Trimethylbenzene | < 0.73 | ug/l | 0.73 | 2.33 | 1 | GRO95/8021 | | 11/20/2018 | CJR | 1 |
| 1,3,5-Trimethylbenzene | < 0.75 | ug/l | 0.75 | 2.39 | 1 | GRO95/8021 | | 11/20/2018 | CJR | 1 |
| m&p-Xylene | < 1 | ug/l | 1 | 3.17 | 1 | GRO95/8021 | | 11/20/2018 | CJR | 1 |
| o-Xylene | < 0.58 | ug/l | 0.58 | 1.84 | 1 | GRO95/8021 | | 11/20/2018 | CJR | 1 |

Lab Code 5035498D
 Sample ID MW-5
 Sample Matrix Water
 Sample Date 11/14/2018

| | Result | Unit | LOD | LOQ | Dil | Method | Ext Date | Run Date | Analyst | Code |
|--------------------------------|----------|------|------|------|-----|------------|----------|------------|---------|------|
| Organic | | | | | | | | | | |
| PVOC + Naphthalene | | | | | | | | | | |
| Benzene | 43 | ug/l | 0.22 | 0.69 | 1 | GRO95/8021 | | 11/20/2018 | CJR | 1 |
| Ethylbenzene | 18 | ug/l | 0.53 | 1.69 | 1 | GRO95/8021 | | 11/20/2018 | CJR | 1 |
| Methyl tert-butyl ether (MTBE) | < 0.57 | ug/l | 0.57 | 1.82 | 1 | GRO95/8021 | | 11/20/2018 | CJR | 1 |
| Naphthalene | 18 | ug/l | 1.7 | 5.38 | 1 | GRO95/8021 | | 11/20/2018 | CJR | 1 |
| Toluene | 6.0 | ug/l | 0.45 | 1.45 | 1 | GRO95/8021 | | 11/20/2018 | CJR | 1 |
| 1,2,4-Trimethylbenzene | 1.92 "J" | ug/l | 0.73 | 2.33 | 1 | GRO95/8021 | | 11/20/2018 | CJR | 1 |
| 1,3,5-Trimethylbenzene | 1.04 "J" | ug/l | 0.75 | 2.39 | 1 | GRO95/8021 | | 11/20/2018 | CJR | 1 |
| m&p-Xylene | 4.6 | ug/l | 1 | 3.17 | 1 | GRO95/8021 | | 11/20/2018 | CJR | 1 |
| o-Xylene | 1.65 "J" | ug/l | 0.58 | 1.84 | 1 | GRO95/8021 | | 11/20/2018 | CJR | 1 |

Project

Lab Code 5035498E
 Sample ID MW-2
 Sample Matrix Water
 Sample Date 11/14/2018

| | Result | Unit | LOD | LOQ | Dil | Method | Ext Date | Run Date | Analyst | Code |
|--------------------------------|----------|------|-----|------|-----|------------|----------|------------|---------|------|
| Organic | | | | | | | | | | |
| PVOC + Naphthalene | | | | | | | | | | |
| Benzene | 266 | ug/l | 2.2 | 6.9 | 10 | GRO95/8021 | | 11/21/2018 | CJR | 1 |
| Ethylbenzene | 32 | ug/l | 5.3 | 16.9 | 10 | GRO95/8021 | | 11/21/2018 | CJR | 1 |
| Methyl tert-butyl ether (MTBE) | < 5.7 | ug/l | 5.7 | 18.2 | 10 | GRO95/8021 | | 11/21/2018 | CJR | 1 |
| Naphthalene | < 17 | ug/l | 17 | 53.8 | 10 | GRO95/8021 | | 11/21/2018 | CJR | 1 |
| Toluene | 11.2 "J" | ug/l | 4.5 | 14.5 | 10 | GRO95/8021 | | 11/21/2018 | CJR | 1 |
| 1,2,4-Trimethylbenzene | < 7.3 | ug/l | 7.3 | 23.3 | 10 | GRO95/8021 | | 11/21/2018 | CJR | 1 |
| 1,3,5-Trimethylbenzene | < 7.5 | ug/l | 7.5 | 23.9 | 10 | GRO95/8021 | | 11/21/2018 | CJR | 1 |
| m&p-Xylene | 23.7 "J" | ug/l | 10 | 31.7 | 10 | GRO95/8021 | | 11/21/2018 | CJR | 1 |
| o-Xylene | 6.5 "J" | ug/l | 5.8 | 18.4 | 10 | GRO95/8021 | | 11/21/2018 | CJR | 1 |

Lab Code 5035498F
 Sample ID MW-1
 Sample Matrix Water
 Sample Date 11/14/2018

| | Result | Unit | LOD | LOQ | Dil | Method | Ext Date | Run Date | Analyst | Code |
|--------------------------------|--------|------|-----|------|-----|------------|----------|------------|---------|------|
| Organic | | | | | | | | | | |
| PVOC + Naphthalene | | | | | | | | | | |
| Benzene | 950 | ug/l | 2.2 | 6.9 | 10 | GRO95/8021 | | 11/21/2018 | CJR | 1 |
| Ethylbenzene | 2090 | ug/l | 5.3 | 16.9 | 10 | GRO95/8021 | | 11/21/2018 | CJR | 1 |
| Methyl tert-butyl ether (MTBE) | < 5.7 | ug/l | 5.7 | 18.2 | 10 | GRO95/8021 | | 11/21/2018 | CJR | 1 |
| Naphthalene | 269 | ug/l | 17 | 53.8 | 10 | GRO95/8021 | | 11/21/2018 | CJR | 1 |
| Toluene | 189 | ug/l | 4.5 | 14.5 | 10 | GRO95/8021 | | 11/21/2018 | CJR | 1 |
| 1,2,4-Trimethylbenzene | 1410 | ug/l | 7.3 | 23.3 | 10 | GRO95/8021 | | 11/21/2018 | CJR | 1 |
| 1,3,5-Trimethylbenzene | 320 | ug/l | 7.5 | 23.9 | 10 | GRO95/8021 | | 11/21/2018 | CJR | 1 |
| m&p-Xylene | 4600 | ug/l | 10 | 31.7 | 10 | GRO95/8021 | | 11/21/2018 | CJR | 1 |
| o-Xylene | 1850 | ug/l | 5.8 | 18.4 | 10 | GRO95/8021 | | 11/21/2018 | CJR | 1 |

Lab Code 5035498G
 Sample ID TRIP BLK
 Sample Matrix Water
 Sample Date 11/14/2018

| | Result | Unit | LOD | LOQ | Dil | Method | Ext Date | Run Date | Analyst | Code |
|--------------------------------|--------|------|------|------|-----|------------|----------|------------|---------|------|
| Organic | | | | | | | | | | |
| PVOC + Naphthalene | | | | | | | | | | |
| Benzene | < 0.22 | ug/l | 0.22 | 0.69 | 1 | GRO95/8021 | | 11/20/2018 | CJR | 1 |
| Ethylbenzene | < 0.53 | ug/l | 0.53 | 1.69 | 1 | GRO95/8021 | | 11/20/2018 | CJR | 1 |
| Methyl tert-butyl ether (MTBE) | < 0.57 | ug/l | 0.57 | 1.82 | 1 | GRO95/8021 | | 11/20/2018 | CJR | 1 |
| Naphthalene | < 1.7 | ug/l | 1.7 | 5.38 | 1 | GRO95/8021 | | 11/20/2018 | CJR | 1 |
| Toluene | < 0.45 | ug/l | 0.45 | 1.45 | 1 | GRO95/8021 | | 11/20/2018 | CJR | 1 |
| 1,2,4-Trimethylbenzene | < 0.73 | ug/l | 0.73 | 2.33 | 1 | GRO95/8021 | | 11/20/2018 | CJR | 1 |
| 1,3,5-Trimethylbenzene | < 0.75 | ug/l | 0.75 | 2.39 | 1 | GRO95/8021 | | 11/20/2018 | CJR | 1 |
| m&p-Xylene | < 1 | ug/l | 1 | 3.17 | 1 | GRO95/8021 | | 11/20/2018 | CJR | 1 |
| o-Xylene | < 0.58 | ug/l | 0.58 | 1.84 | 1 | GRO95/8021 | | 11/20/2018 | CJR | 1 |

Project Name MR. P'S TIRES, FMR
Project #

Invoice # E35498

"J" Flag: Analyte detected between LOD and LOQ

LOD Limit of Detection

LOQ Limit of Quantitation

Code *Comment*

1 Laboratory QC within limits.

All solid sample results reported on a dry weight basis unless otherwise indicated. All LOD's and LOQ's are adjusted for dilutions but not dry weight. Subcontracted results are denoted by SUB in the analyst field.

Authorized Signature

Michael Ricker

Synergy

Environmental Lab, Inc.

1990 Prospect Ct. • Appleton, WI 54914
920-830-2455 • FAX 920-733-0631

Sample Handling Request

Rush Analysis Date Required _____
(Rushes accepted only with prior authorization)

Normal Turn Around

Lab I.D. # _____
 Account No. : _____ Quote No.: _____
 Project #: _____
 Sampler: (signature) *Max Wannow*

Project (Name / Location): *Mr. P's Tires, Former/Milwaukee, WI*
 Reports To: *Mark Pachefsky* Invoice To: *Mark Pachefsky*
 Company: _____ Company: _____
 Address: *4475 Club Dr.* Address: *% METCO*
 City State Zip: *Slinger, WI 53086* City State Zip: *709 Gillette Street, Suite 3*
 Phone: *414-336-6053* Phone: *La Crosse, WI 54603*
 FAX: _____ FAX: _____

| Analysis Requested | | | | | | | | | | | Other Analysis | | | | PID/
FID |
|----------------------|----------------------|------|-----------------|--------------|----------------|-----|-----------------|--------------------|---------|------------------------|--------------------|----------------|---------------|--|-------------|
| DRO (Mod DRO Sep 95) | GRO (Mod GRO Sep 95) | LEAD | NITRATE/NITRITE | OIL & GREASE | PAH (EPA 8270) | PCB | PVOC (EPA 8021) | PVOC + NAPHTHALENE | SULFATE | TOTAL SUSPENDED SOLIDS | VOC DW (EPA 524.2) | VOC (EPA 8260) | 8-RCRA METALS | | |
| | | | | | | | | | | | | | | | |
| | | | | | | | | | | | | | | | |
| | | | | | | | | | | | | | | | |
| | | | | | | | | | | | | | | | |
| | | | | | | | | | | | | | | | |
| | | | | | | | | | | | | | | | |
| | | | | | | | | | | | | | | | |

| Lab I.D. | Sample I.D. | Collection Date | Time | Comp | Grab | Filtered Y/N | No. of Containers | Sample Type (Matrix)* | Preservation |
|------------------|-------------------|-----------------|--------------|------|------|--------------|-------------------|-----------------------|--------------|
| <i>5035499 A</i> | <i>MW-3</i> | <i>11/14/18</i> | <i>8:30</i> | | | <i>N</i> | <i>3</i> | <i>GW</i> | <i>HCl</i> |
| <i>B</i> | <i>MW-6</i> | <i>↓</i> | <i>9:05</i> | | | <i>↓</i> | <i>↓</i> | <i>↓</i> | <i>↓</i> |
| <i>C</i> | <i>MW-4</i> | <i>↓</i> | <i>9:30</i> | | | <i>↓</i> | <i>↓</i> | <i>↓</i> | <i>↓</i> |
| <i>D</i> | <i>MW-5</i> | <i>↓</i> | <i>10:05</i> | | | <i>↓</i> | <i>↓</i> | <i>↓</i> | <i>↓</i> |
| <i>E</i> | <i>MW-2</i> | <i>↓</i> | <i>10:40</i> | | | <i>↓</i> | <i>↓</i> | <i>↓</i> | <i>↓</i> |
| <i>F</i> | <i>MW-1</i> | <i>↓</i> | <i>11:00</i> | | | <i>↓</i> | <i>↓</i> | <i>↓</i> | <i>↓</i> |
| <i>G</i> | <i>Trip Blank</i> | | | | | | <i>1</i> | | |

Comments/Special Instructions ("Specify groundwater "GW", Drinking Water "DW", Waste Water "WW", Soil "S", Air "A", Oil, Sludge etc.)
Lab to send copy of report to METCO/Jason P. (Invoice to METCO)
★ U & C rates apply
★ Agent Status

Sample integrity - To be completed by receiving lab.
 Method of Shipment: *CP*
 Temp. of Temp. Blank _____ °C On Ice:
 Cooler seal intact upon receipt: Yes _____ No

Relinquished By: (sign) *[Signature]* Time *2:32pm* Date *11/14/18*
 Received By: (sign) _____ Time _____ Date _____
 Received in Laboratory By: *[Signature]* Time: *8:00* Date: *11/15/18*