



Excellence through experience™

709 Gillette St., Ste 3, La Crosse, WI 54603 ♦ 1-800-552-2932 ♦ Fax (608) 781-8893 Email: rona@metcohq.com ♦ www.metcohq.com

September 19, 2019

BRRTS #: 03-41-563586
PECFA #: 53208-4036-05

Andy Alles
Wisconsin Department of Natural Resources
101 S Webster St
Madison, WI 53707

Subject: Mr. P's Tire – Groundwater Monitoring Report

Dear Mr. Alles,

Enclosed is the report for the Mr. P's Tire site located in Milwaukee, Wisconsin. **This completes the Semi-Annual Groundwater Monitoring Report (1st of 2) of the Public Bidding Deferred work scope approved on March 25, 2019.**

Groundwater Monitoring Workscope

On May 6, 2019, METCO collected groundwater samples from four monitoring wells (MW-1, MW-2, MW-5, and MW-6) for PVOC and Naphthalene analysis. Field measurements for water level, Dissolved Oxygen, pH, ORP, specific conductance, and temperature were collected from the sampled monitoring wells. Water level measurements were also collected from two additional monitoring wells (MW-3 and MW-4).

On July 30, 2019, METCO collected groundwater samples from four monitoring wells (MW-1, MW-2, MW-5, and MW-6) for PVOC and Naphthalene analysis. Field measurements for water level, Dissolved Oxygen, pH, ORP, specific conductance, and temperature were collected from the sampled monitoring wells. Water level measurements were also collected from two additional monitoring wells (MW-3 and MW-4).

Groundwater Results

Monitoring Well MW-1: Currently shows NR140 Enforcement Standard (ES) exceedances for Benzene (1,390 ppb), Ethylbenzene (2,170 ppb), Naphthalene (225 ppb), Trimethylbenzenes (1,517 ppb), and Xylene (6,470 ppb) as well as a NR140 Preventative Action Limit (PAL) exceedance for Toluene (204 ppb). Groundwater contaminant trends appear to be stable. It does appear that fluctuations in the water table elevations correlate with fluctuations in the contaminant concentrations.

Monitoring Well MW-2: Currently shows an NR140 Enforcement Standard (ES) exceedance for Benzene (400 ppb) as well as a NR140 Preventative Action Limit (PAL) exceedance for Naphthalene (16.5 ppb). Contaminant levels appear to be stable. It does not appear that fluctuations in the water table elevations affects the contaminant concentrations.

Monitoring Well MW-5: Currently shows an NR140 Enforcement Standard (ES) exceedance for Benzene (52 ppb) as well as a NR140 Preventative Action Limit (PAL) exceedance for Naphthalene (11.3 ppb). Groundwater contaminant trends appear to be stable. It does not appear that fluctuations in the water table elevations affects the contaminant concentrations.

Monitoring Well MW-6: Currently shows detects, but no exceedances for all contaminants of concern.

Conclusions/Recommendations

Two additional rounds of groundwater sampling remain of the approved work scope with the next sampling event scheduled for late October 2019.

A Detailed Site Map, Groundwater Flow Maps (2), Groundwater Isoconcentration Map, Data Tables, Graphs and Laboratory Documents have been attached.

If you have any questions or comments, please feel free to call (608-781-8879) or email at jasonp@metcohq.com.

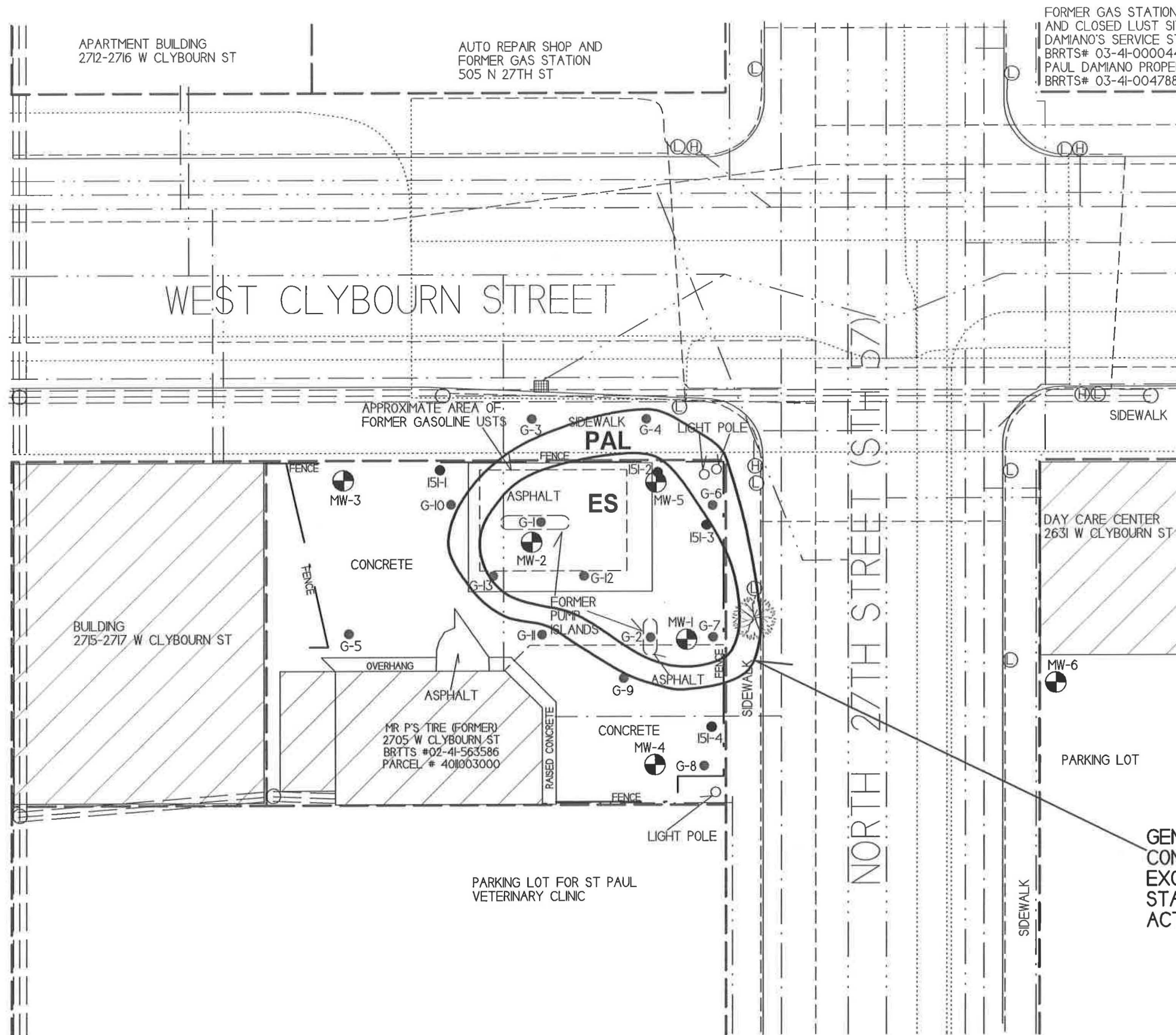
Sincerely,

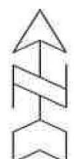



Jason T. Powell
Staff Scientist

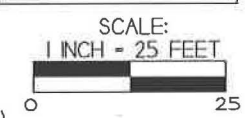
Attachments

c: Mark Pachefsky – Client



GROUNDWATER ISOCONCENTRATION MAP (7-30-19)		
MR P'S TIRE		
 709 Gillette St, Suite 3 La Crosse, WI 54603 Tel: (608) 781-8879 Fax: (608) 781-8893	MILWAUKEE, WISCONSIN	
DRAWN BY: ED DATE: 9/2/16		
MODIFIED BY: RW DATE: 8/30/19		

NOTE: INFORMATION BASED ON AVAILABLE
DATA ACTUAL CONDITIONS MAY DIFFER



- - SOIL BORING LOCATION (PHASE 2 INVESTIGATION)
 - ⊕ - MONITORING WELL LOCATION
 - - GEOPROBE BORING LOCATION
 - - UTILITY POLE
 - ⊙ - STREET LIGHT/TRAFFIC SIGNAL
 - ⊗ - SEWER MAN HOLE
 - ⊠ - STORM DRAIN
 - ⊕ - FIRE HYDRANT
-
- — — — — - WATER LINE
 - - - - - - SANITARY SEWER LINE
 - - - - - - NATURAL GAS LINE
 - - - - - - BURIED ELECTRIC LINE
 - ≡ ≡ ≡ ≡ ≡ - OVERHEAD UTILITIES
 - · - · - · - TELEPHONE/CABLE LINE
 - - - - - - PROPERTY BOUNDARY

GENERAL EXTENT OF PETROLEUM
CONTAMINATION IN GROUNDWATER
EXCEEDING NRI40 ENFORCEMENT
STANDARDS (ES) AND/OR PREVENTIVE
ACTION LIMITS (PAL)

A.1 Groundwater Analytical Table
Mr. P's Tires, Former BRRTS #02-41-563586

Well MW-1

PVC Elevation = 665.11 (feet) (MSL)

Date	Water Elevation (in feet msl)	Depth to water from top of PVC (in feet)	Lead (ppb)	Benzene (ppb)	Ethyl benzene (ppb)	MTBE (ppb)	Naphthalene (ppb)	Toluene (ppb)	Trimethylbenzenes (ppb)	Xylene (Total) (ppb)
10/30/17	659.95	5.16	<0.9	410	320	<8.2	50	63	305	1890
01/24/18	659.44	5.67	<0.9	1110	960	<5.7	86	60	455	1630
08/20/18	659.90	5.21	NS	1260	1530	<5.7	120	80	776	2760
11/14/18	660.30	4.81	NS	950	2090	<5.7	269	189	1730	6450
05/06/19	660.81	4.30	NS	1200	3070	<14	330	268	2430	10700
07/30/19	659.97	5.14	NS	1390	2170	<12	225	204	1517	6470
ENFORCEMENT STANDARD ES = Bold			15	5	700	60	100	800	480	2000
PREVENTIVE ACTION LIMIT PAL = Italics			<i>1.5</i>	<i>0.5</i>	<i>140</i>	<i>12</i>	<i>10</i>	<i>160</i>	<i>96</i>	<i>400</i>

(ppb) = parts per billion (ppm) = parts per million
 NS = Not Sampled NM = Not Measured
 Note: Elevations are presented in feet mean sea level (msl).

Well MW-2

PVC Elevation = 665.87 (feet) (MSL)

Date	Water Elevation (in feet msl)	Depth to water from top of PVC (in feet)	Lead (ppb)	Benzene (ppb)	Ethyl benzene (ppb)	MTBE (ppb)	Naphthalene (ppb)	Toluene (ppb)	Trimethylbenzenes (ppb)	Xylene (Total) (ppb)
10/30/17	660.60	5.27	<0.9	540	110	<8.2	119	7.6	71.7	57.3
01/24/18	661.56	4.31	<0.9	680	92	<5.7	33	17.2	23.4	48.3
08/20/18	662.28	3.59	NS	500	79	<5.7	33	16	<14.8	42.1
11/14/18	662.41	3.46	NS	266	32	<5.7	<17	11.2	<14.8	30.2
05/06/19	662.67	3.20	NS	540	50	2.15	<10.5	8.3	<7.15	28.45
07/30/19	662.37	3.50	NS	400	36	5	16.5	11.1	<11.3	21.7-22.40
ENFORCEMENT STANDARD ES = Bold			15	5	700	60	100	800	480	2000
PREVENTIVE ACTION LIMIT PAL = Italics			<i>1.5</i>	<i>0.5</i>	<i>140</i>	<i>12</i>	<i>10</i>	<i>160</i>	<i>96</i>	<i>400</i>

(ppb) = parts per billion (ppm) = parts per million
 NS = Not Sampled NM = Not Measured
 Note: Elevations are presented in feet mean sea level (msl).

Well MW-3

PVC Elevation = 666.05 (feet) (MSL)

Date	Water Elevation (in feet msl)	Depth to water from top of PVC (in feet)	Lead (ppb)	Benzene (ppb)	Ethyl benzene (ppb)	MTBE (ppb)	Naphthalene (ppb)	Toluene (ppb)	Trimethylbenzenes (ppb)	Xylene (Total) (ppb)
10/30/17	654.97	11.08	<0.9	<0.17	<0.2	<0.82	<2.17	<0.67	<2.05	<1.95
01/24/18	659.07	6.98	<0.9	<0.22	<0.53	<0.57	<1.7	<0.45	<1.48	<1.58
08/20/18	662.53	3.52	NS	<0.22	<0.53	<0.57	<1.7	<0.45	<1.48	<1.58
11/14/18	662.40	3.65	NS	<0.22	<0.53	<0.57	<1.7	<0.45	<1.48	<1.58
05/06/19	662.82	3.23	NOT SAMPLED							
07/30/19	662.47	3.58	NOT SAMPLED							
ENFORCEMENT STANDARD ES = Bold			15	5	700	60	100	800	480	2000
PREVENTIVE ACTION LIMIT PAL = Italics			<i>1.5</i>	<i>0.5</i>	<i>140</i>	<i>12</i>	<i>10</i>	<i>160</i>	<i>96</i>	<i>400</i>

(ppb) = parts per billion (ppm) = parts per million
 NS = Not Sampled NM = Not Measured
 Note: Elevations are presented in feet mean sea level (msl).

A.1 Groundwater Analytical Table
Mr. P's Tires, Former BRRS #02-41-563586

Well MW-4

PVC Elevation = 664.83 (feet) (MSL)

Date	Water Elevation (in feet msl)	Depth to water from top of PVC (in feet)	Lead (ppb)	Benzene (ppb)	Ethyl benzene (ppb)	MTBE (ppb)	Naphthalene (ppb)	Toluene (ppb)	Trimethylbenzenes (ppb)	Xylene (Total) (ppb)
10/30/17	659.93	4.90	<0.9	<0.17	<0.2	<0.82	<2.17	<0.67	<2.05	<1.95
01/24/18	659.78	5.05	<0.9	<0.22	<0.53	<0.57	<1.7	<0.45	<1.48	<1.58
08/20/18	659.85	4.98	NS	0.36	<0.53	<0.57	<1.7	<0.45	<1.48	<1.58
11/14/18	659.84	4.99	NS	<0.22	<0.53	<0.57	<1.7	<0.45	<1.48	<1.58
05/06/19	660.51	4.32	NOT SAMPLED							
07/30/19	659.61	5.22	NOT SAMPLED							
ENFORCEMENT STANDARD ES = Bold			15	5	700	60	100	800	480	2000
PREVENTIVE ACTION LIMIT PAL = Italics			<i>1.5</i>	<i>0.5</i>	<i>140</i>	<i>12</i>	<i>10</i>	<i>160</i>	<i>96</i>	<i>400</i>

(ppb) = parts per billion (ppm) = parts per million
 NS = Not Sampled NM = Not Measured
 Note: Elevations are presented in feet mean sea level (msl).

Well MW-5

PVC Elevation = 666.09 (feet) (MSL)

Date	Water Elevation (in feet msl)	Depth to water from top of PVC (in feet)	Lead (ppb)	Benzene (ppb)	Ethyl benzene (ppb)	MTBE (ppb)	Naphthalene (ppb)	Toluene (ppb)	Trimethylbenzenes (ppb)	Xylene (Total) (ppb)
10/30/17	662.31	3.78	2.7	34	46	<0.82	59	2.27	31.5	13.85
01/24/18	660.15	5.94	1.2	43	41	<0.57	22.8	6.2	7	7.29
08/20/18	662.28	3.81	NS	72	27.6	<0.57	22.1	8.5	5.44	11.87
11/14/18	662.39	3.70	NS	43	18	<0.57	18	6.0	2.96	6.25
05/06/19	662.70	3.39	NS	60	14.3	<0.57	8.9	5.2	2.60	5.87
07/30/19	662.36	3.73	NS	52	10.1	<0.24	11.3	4.8	0.97-1.64	4.5-5.20
ENFORCEMENT STANDARD ES = Bold			15	5	700	60	100	800	480	2000
PREVENTIVE ACTION LIMIT PAL = Italics			<i>1.5</i>	<i>0.5</i>	<i>140</i>	<i>12</i>	<i>10</i>	<i>160</i>	<i>96</i>	<i>400</i>

(ppb) = parts per billion (ppm) = parts per million
 NS = Not Sampled NM = Not Measured
 Note: Elevations are presented in feet mean sea level (msl).

Well MW-6

PVC Elevation = 665.89 (feet) (MSL)

Date	Water Elevation (in feet msl)	Depth to water from top of PVC (in feet)	Lead (ppb)	Benzene (ppb)	Ethyl benzene (ppb)	MTBE (ppb)	Naphthalene (ppb)	Toluene (ppb)	Trimethylbenzenes (ppb)	Xylene (Total) (ppb)
10/30/17	663.14	2.75	<0.9	<0.17	<0.2	<0.82	<2.17	<0.67	<2.05	<1.95
01/24/18	663.43	2.46	<0.9	<0.22	<0.53	<0.57	<1.7	<0.45	<1.48	<1.58
08/20/18	654.77	11.12	NS	0.28	<0.53	<0.57	<1.7	<0.45	<1.48	<1.58
11/14/18	657.12	8.77	NS	0.294	<0.53	<0.57	<1.7	1.01	<1.48	2.08
05/06/19	657.53	8.36	NS	<0.22	<0.53	<0.57	<1.7	<0.45	<1.48	<1.58
07/30/19	655.79	10.10	NS	<0.32	<0.29	<0.24	<1.3	0.37	<1.13	<1.22
ENFORCEMENT STANDARD ES = Bold			15	5	700	60	100	800	480	2000
PREVENTIVE ACTION LIMIT PAL = Italics			<i>1.5</i>	<i>0.5</i>	<i>140</i>	<i>12</i>	<i>10</i>	<i>160</i>	<i>96</i>	<i>400</i>

(ppb) = parts per billion (ppm) = parts per million
 NS = Not Sampled NM = Not Measured
 Note: Elevations are presented in feet mean sea level (msl).

A.6 Water Level Elevations
Mr. P's Tires, Former BRRTS #02-41-563586
Milwaukee, Wisconsin

	MW-1	MW-2	MW-3	MW-4	MW-5	MW-6
Ground Surface (feet msl)	665.54	666.27	666.47	665.19	666.49	666.23
PVC top (feet msl)	665.11	665.87	666.05	664.83	666.09	665.89
Well Depth (feet)	14.00	14.00	14.00	14.00	14.00	14.00
Top of screen (feet msl)	661.54	662.27	662.47	661.19	662.49	662.23
Bottom of screen (feet msl)	651.54	652.27	652.47	651.19	652.49	652.23
Depth to Water From Top of PVC (feet)						
10/30/17	5.16	5.27	11.08	4.90	3.78	2.75
01/24/18	5.67	4.31	6.98	5.05	5.94	2.46
08/20/18	5.21	3.59	3.52	4.98	3.81	11.12
11/14/18	4.81	3.46	3.65	4.99	3.70	8.77
05/06/19	4.30	3.20	3.23	4.32	3.39	8.36
07/30/19	5.14	3.50	3.58	5.22	3.73	10.10
Depth to Water From Ground Surface (feet)						
10/30/17	5.59	5.67	11.50	5.26	4.18	3.09
01/24/18	6.10	4.71	7.40	5.41	6.34	2.80
08/20/18	5.64	3.99	3.94	5.34	4.21	11.46
11/14/18	5.24	3.86	4.07	5.35	4.10	9.11
05/06/19	4.73	3.60	3.65	4.68	3.79	8.70
07/30/19	5.57	3.90	4.00	5.58	4.13	10.44
Groundwater Elevation (feet msl)						
10/30/17	659.95	660.60	654.97	659.93	662.31	663.14
01/24/18	659.44	661.56	659.07	659.78	660.15	663.43
08/20/18	659.90	662.28	662.53	659.85	662.28	654.77
11/14/18	660.30	662.41	662.40	659.84	662.39	657.12
05/06/19	660.81	662.67	662.82	660.51	662.70	657.53
07/30/19	659.97	662.37	662.47	659.61	662.36	655.79

Note: Elevations are presented in feet mean sea level (msl).

A.7 Other

Groundwater NA Indicator Results

Mr. P's Tires, Former BRRTS #02-41-563586

Well MW-1

Date	Dissolved Oxygen (ppm)	pH	ORP	Temp (C)	Specific Conductance	Nitrate + Nitrite (ppm)	Total Sulfate (ppm)	Dissolved Iron (ppm)	Manganese (ppb)
10/30/17	0.22	7.52	233	17.1	1938	<0.17	35.0	0.07	3610
01/24/18	1.19	6.82	-155	8.4	1782	NS	NS	NS	NS
08/20/18	2.63	7.05	40.5	21.47	1532	NS	NS	NS	NS
11/14/18	2.90	8.04	-26.3	14.66	1662	NS	NS	NS	NS
05/06/19	8.08	6.15	-52.9	9.90	1759	NS	NS	NS	NS
07/30/19	2.41	7.85	-224.2	20.19	1636	NS	NS	NS	NS
ENFORCEMENT STANDARD = ES – Bold						10	-	-	300
PREVENTIVE ACTION LIMIT = PAL - Italics						2	-	-	60

(ppb) = parts per billion (ppm) = parts per million

NS = Not Sampled

NM = Not Measured

ORP = Oxidation Reduction Potential

Note: Elevations are presented in feet mean sea level (msl).

Well MW-2

Date	Dissolved Oxygen (ppm)	pH	ORP	Temp (C)	Specific Conductance	Nitrate + Nitrite (ppm)	Total Sulfate (ppm)	Dissolved Iron (ppm)	Manganese (ppb)
10/30/17	0.31	7.99	236	17.4	554	<0.17	9.84	0.24	1800
01/24/18	0.96	6.95	-61	7.4	6405	NS	NS	NS	NS
08/20/18	2.46	7.03	35.8	21.94	8272	NS	NS	NS	NS
11/14/18	3.07	7.63	-21.1	11.28	6434	NS	NS	NS	NS
05/06/19	7.33	6.88	-112.2	9.44	8204	NS	NS	NS	NS
07/30/19	2.38	8.68	-232.0	23.09	7348	NS	NS	NS	NS
ENFORCEMENT STANDARD = ES – Bold						10	-	-	300
PREVENTIVE ACTION LIMIT = PAL - Italics						2	-	-	60

(ppb) = parts per billion (ppm) = parts per million

NS = Not Sampled

NM = Not Measured

ORP = Oxidation Reduction Potential

Note: Elevations are presented in feet mean sea level (msl).

Well MW-3

Date	Dissolved Oxygen (ppm)	pH	ORP	Temp (C)	Specific Conductance	Nitrate + Nitrite (ppm)	Total Sulfate (ppm)	Dissolved Iron (ppm)	Manganese (ppb)
10/30/17	3.46	9.04	247	15.6	1248	0.37	169	0.03	2490
01/24/18	1.74	7.35	160	9.5	1402	NS	NS	NS	NS
08/20/18	2.51	7.05	38.4	22.86	1491	NS	NS	NS	NS
11/14/18	3.01	7.58	-23.7	14.08	1571	NS	NS	NS	NS
05/06/19	NOT SAMPLED								
07/30/19	NOT SAMPLED								
ENFORCEMENT STANDARD = ES – Bold						10	-	-	300
PREVENTIVE ACTION LIMIT = PAL - Italics						2	-	-	60

(ppb) = parts per billion (ppm) = parts per million

NS = Not Sampled

NM = Not Measured

ORP = Oxidation Reduction Potential

Note: Elevations are presented in feet mean sea level (msl).

A.7 Other
Groundwater NA Indicator Results
Mr. P's Tires, Former BRRS #02-41-563586

Well MW-4

Date	Dissolved Oxygen (ppm)	pH	ORP	Temp (C)	Specific Conductance	Nitrate + Nitrite (ppm)	Total Sulfate (ppm)	Dissolved Iron (ppm)	Manganese (ppb)
10/30/17	1.00	7.93	253	18.3	1103	<0.17	32.7	<0.03	1100
01/24/18	1.41	7.25	42.4	8.43	974	NS	NS	NS	NS
08/20/18	2.55	7.17	33.8	20.98	1077	NS	NS	NS	NS
11/14/18	3.01	7.94	-21.3	14.00	1136	NS	NS	NS	NS
05/06/19	NOT SAMPLED								
07/30/19	NOT SAMPLED								
ENFORCEMENT STANDARD = ES – Bold						10	-	-	300
PREVENTIVE ACTION LIMIT = <i>PAL - Italics</i>						2	-	-	60

(ppb) = parts per billion (ppm) = parts per million
 NS = Not Sampled NM = Not Measured ORP = Oxidation Reduction Potential
 Note: Elevations are presented in feet mean sea level (msl).

Well MW-5

Date	Dissolved Oxygen (ppm)	pH	ORP	Temp (C)	Specific Conductance	Nitrate + Nitrite (ppm)	Total Sulfate (ppm)	Dissolved Iron (ppm)	Manganese (ppb)
10/30/17	0.31	8.21	225	16.2	2065	<0.17	9.38	<0.03	685
01/24/18	1.53	7.16	-28	7.6	2643	NS	NS	NS	NS
08/20/18	2.44	7.11	39.2	22.40	4310	NS	NS	NS	NS
11/14/18	3.00	8.06	-25.0	13.42	2992	NS	NS	NS	NS
05/06/19	7.57	7.28	-80.6	10.53	2854	NS	NS	NS	NS
07/30/19	2.27	8.43	-179.5	23.16	2310	NS	NS	NS	NS
ENFORCEMENT STANDARD = ES – Bold						10	-	-	300
PREVENTIVE ACTION LIMIT = <i>PAL - Italics</i>						2	-	-	60

(ppb) = parts per billion (ppm) = parts per million
 NS = Not Sampled NM = Not Measured ORP = Oxidation Reduction Potential
 Note: Elevations are presented in feet mean sea level (msl).

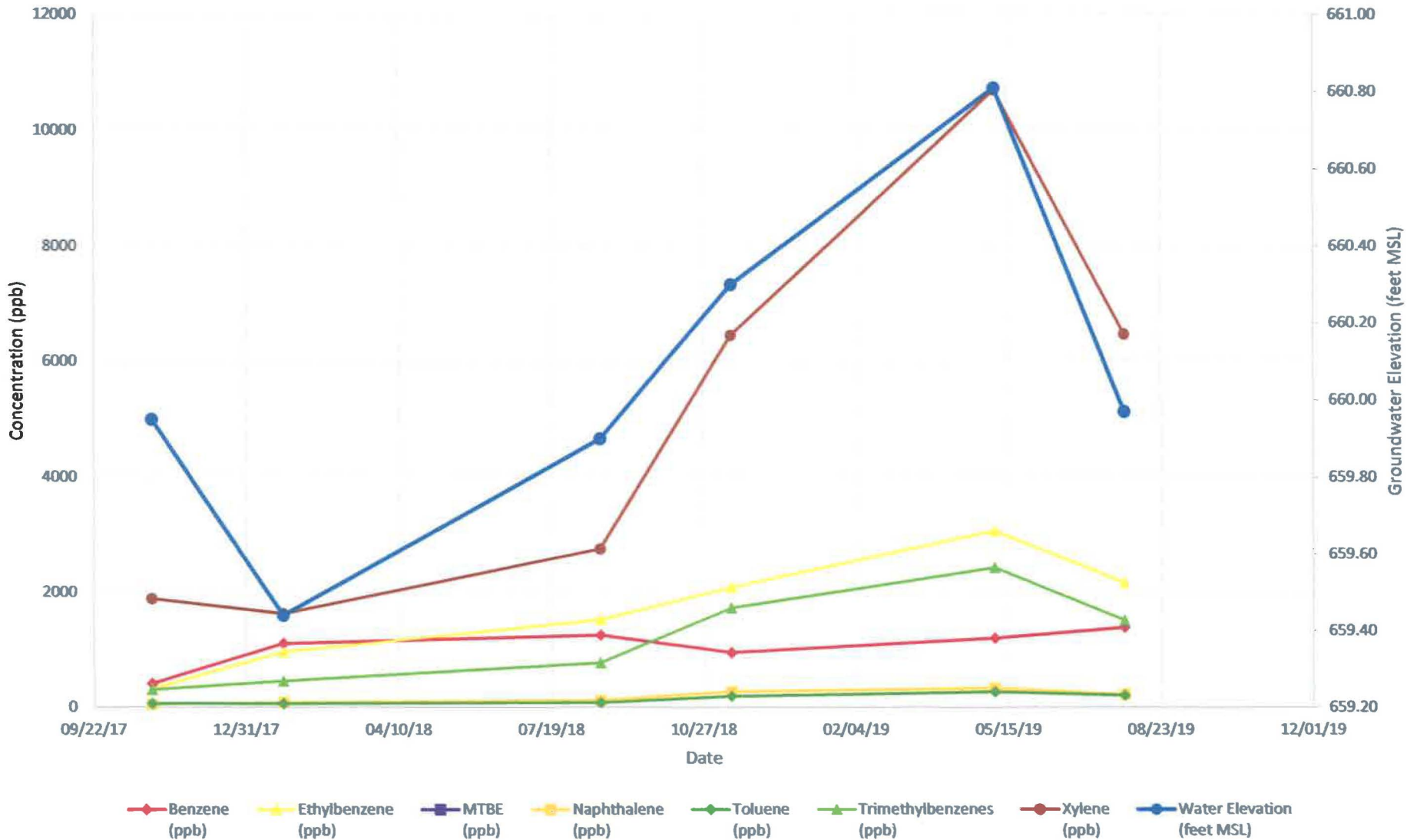
Well MW-6

Date	Dissolved Oxygen (ppm)	pH	ORP	Temp (C)	Specific Conductance	Nitrate + Nitrite (ppm)	Total Sulfate (ppm)	Dissolved Iron (ppm)	Manganese (ppb)
10/30/17	12.30	9.00	243	12.0	280	0.19	27.0	<0.03	11.8
01/24/18	15.49	8.41	362	2.2	285	NS	NS	NS	NS
08/20/18	3.10	6.87	42.7	15.43	732	NS	NS	NS	NS
11/14/18	3.05	7.24	-14.3	12.73	507	NS	NS	NS	NS
05/06/19	9.44	6.62	-40.1	10.71	537	NS	NS	NS	NS
07/30/19	2.59	8.53	-118.9	16.71	817	NS	NS	NS	NS
ENFORCEMENT STANDARD = ES – Bold						10	-	-	300
PREVENTIVE ACTION LIMIT = <i>PAL - Italics</i>						2	-	-	60

(ppb) = parts per billion (ppm) = parts per million
 NS = Not Sampled NM = Not Measured ORP = Oxidation Reduction Potential
 Note: Elevations are presented in feet mean sea level (msl).

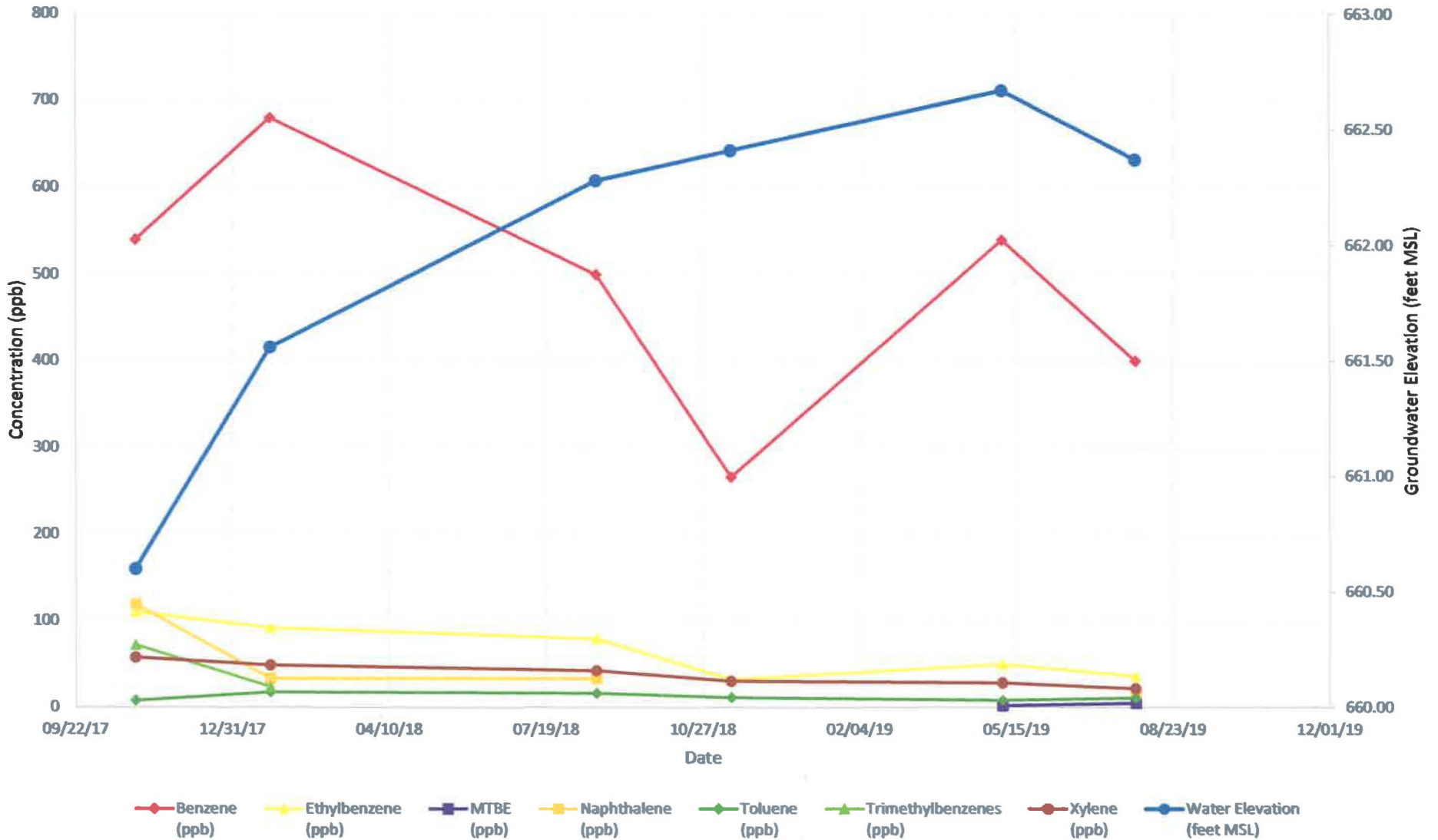
A.7 Other
 Contaminant Concentration vs. Groundwater Elevation
 Mr. P's Tires, Former BRRTS #02-41-563586
 Monitoring Well MW-1

Contaminant Concentration vs. Groundwater Elevation



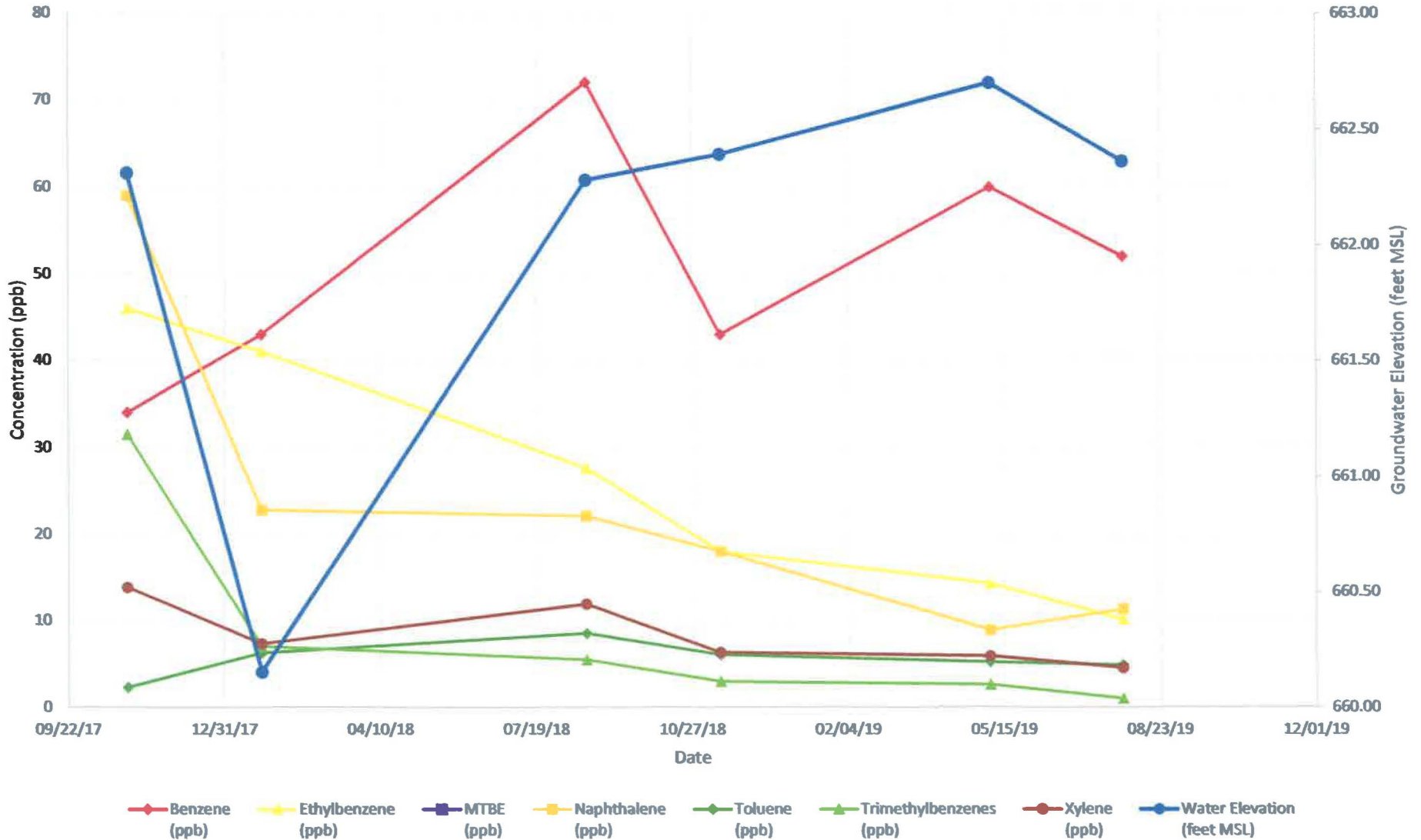
A.7 Other
 Contaminant Concentration vs. Groundwater Elevation
 Mr. P's Tires, Former BRRS #02-41-563586
 Monitoring Well MW-2

Contaminant Concentration vs. Groundwater Elevation



A.7 Other
 Contaminant Concentration vs. Groundwater Elevation
 Mr. P's Tires, Former BRRS #02-41-563586
 Monitoring Well MW-5

Contaminant Concentration vs. Groundwater Elevation



Synergy Environmental Lab,

1990 Prospect Ct., Appleton, WI 54914 *P 920-830-2455 * F 920-733-0631

MARK PACHEFSKY
MARK PACHEFSKY
4475 CLUB DRIVE
SLINGER, WI 53086

Report Date 17-May-19

Project Name MR P'S TIRES

Invoice # E36132

Project #

Lab Code 5036132A

Sample ID MW-6

Sample Matrix Water

Sample Date 5/6/2019

	Result	Unit	LOD	LOQ	Dil	Method	Ext Date	Run Date	Analyst	Code
Organic										
PVOC + Naphthalene										
Benzene	< 0.22	ug/l	0.22	0.69	1	GRO95/8021		5/11/2019	CJR	1
Ethylbenzene	< 0.53	ug/l	0.53	1.69	1	GRO95/8021		5/11/2019	CJR	1
Methyl tert-butyl ether (MTBE)	< 0.57	ug/l	0.57	1.82	1	GRO95/8021		5/11/2019	CJR	1
Naphthalene	< 1.7	ug/l	1.7	5.38	1	GRO95/8021		5/11/2019	CJR	1
Toluene	< 0.45	ug/l	0.45	1.45	1	GRO95/8021		5/11/2019	CJR	1
1,2,4-Trimethylbenzene	< 0.73	ug/l	0.73	2.33	1	GRO95/8021		5/11/2019	CJR	1
1,3,5-Trimethylbenzene	< 0.75	ug/l	0.75	2.39	1	GRO95/8021		5/11/2019	CJR	1
m&p-Xylene	< 1	ug/l	1	3.17	1	GRO95/8021		5/11/2019	CJR	1
o-Xylene	< 0.58	ug/l	0.58	1.84	1	GRO95/8021		5/11/2019	CJR	1

Project

Lab Code 5036132B
 Sample ID MW-5
 Sample Matrix Water
 Sample Date 5/6/2019

	Result	Unit	LOD	LOQ	Dil	Method	Ext Date	Run Date	Analyst	Code
Organic										
PVOC + Naphthalene										
Benzene	60	ug/l	0.22	0.69	1	GRO95/8021		5/11/2019	CJR	1
Ethylbenzene	14.3	ug/l	0.53	1.69	1	GRO95/8021		5/11/2019	CJR	1
Methyl tert-butyl ether (MTBE)	< 0.57	ug/l	0.57	1.82	1	GRO95/8021		5/11/2019	CJR	1
Naphthalene	8.9	ug/l	1.7	5.38	1	GRO95/8021		5/11/2019	CJR	1
Toluene	5.2	ug/l	0.45	1.45	1	GRO95/8021		5/11/2019	CJR	1
1,2,4-Trimethylbenzene	1.69 "J"	ug/l	0.73	2.33	1	GRO95/8021		5/11/2019	CJR	1
1,3,5-Trimethylbenzene	0.91 "J"	ug/l	0.75	2.39	1	GRO95/8021		5/11/2019	CJR	1
m&p-Xylene	4.1	ug/l	1	3.17	1	GRO95/8021		5/11/2019	CJR	1
o-Xylene	1.77 "J"	ug/l	0.58	1.84	1	GRO95/8021		5/11/2019	CJR	1

Lab Code 5036132C
 Sample ID MW-2
 Sample Matrix Water
 Sample Date 5/6/2019

	Result	Unit	LOD	LOQ	Dil	Method	Ext Date	Run Date	Analyst	Code
Organic										
PVOC + Naphthalene										
Benzene	540	ug/l	1.1	3.55	5	8260B		5/14/2019	CJR	1
Ethylbenzene	50	ug/l	1.3	4.15	5	8260B		5/14/2019	CJR	1
Methyl tert-butyl ether (MTBE)	2.15 "J"	ug/l	1.4	4.45	5	8260B		5/14/2019	CJR	1
Naphthalene	< 10.5	ug/l	10.5	33.25	5	8260B		5/14/2019	CJR	1
Toluene	8.3	ug/l	0.95	3	5	8260B		5/14/2019	CJR	1
1,2,4-Trimethylbenzene	< 4	ug/l	4	12.75	5	8260B		5/14/2019	CJR	1
1,3,5-Trimethylbenzene	< 3.15	ug/l	3.15	10	5	8260B		5/14/2019	CJR	1
m&p-Xylene	26.2	ug/l	2.15	6.9	5	8260B		5/14/2019	CJR	1
o-Xylene	2.25 "J"	ug/l	1.45	4.65	5	8260B		5/14/2019	CJR	1

Lab Code 5036132D
 Sample ID MW-1
 Sample Matrix Water
 Sample Date 5/6/2019

	Result	Unit	LOD	LOQ	Dil	Method	Ext Date	Run Date	Analyst	Code
Organic										
PVOC + Naphthalene										
Benzene	1200	ug/l	11	35.5	50	8260B		5/14/2019	CJR	1
Ethylbenzene	3070	ug/l	13	41.5	50	8260B		5/14/2019	CJR	1
Methyl tert-butyl ether (MTBE)	< 14	ug/l	14	44.5	50	8260B		5/14/2019	CJR	1
Naphthalene	330	ug/l	105	332.5	50	8260B		5/14/2019	CJR	1
Toluene	268	ug/l	9.5	30	50	8260B		5/14/2019	CJR	1
1,2,4-Trimethylbenzene	2020	ug/l	40	127.5	50	8260B		5/14/2019	CJR	1
1,3,5-Trimethylbenzene	410	ug/l	31.5	100	50	8260B		5/14/2019	CJR	1
m&p-Xylene	7300	ug/l	21.5	69	50	8260B		5/14/2019	CJR	1
o-Xylene	3400	ug/l	14.5	46.5	50	8260B		5/14/2019	CJR	1

Project #

Lab Code 5036132E
 Sample ID TB
 Sample Matrix Water
 Sample Date 5/6/2019

	Result	Unit	LOD	LOQ	Dil	Method	Ext Date	Run Date	Analyst	Code
Organic										
PVOC + Naphthalene										
Benzene	< 0.22	ug/l	0.22	0.71	1	8260B		5/15/2019	CJR	1
Ethylbenzene	< 0.26	ug/l	0.26	0.83	1	8260B		5/15/2019	CJR	1
Methyl tert-butyl ether (MTBE)	< 0.28	ug/l	0.28	0.89	1	8260B		5/15/2019	CJR	1
Naphthalene	< 2.1	ug/l	2.1	6.65	1	8260B		5/15/2019	CJR	1
Toluene	< 0.19	ug/l	0.19	0.6	1	8260B		5/15/2019	CJR	1
1,2,4-Trimethylbenzene	< 0.8	ug/l	0.8	2.55	1	8260B		5/15/2019	CJR	1
1,3,5-Trimethylbenzene	< 0.63	ug/l	0.63	2	1	8260B		5/15/2019	CJR	1
m&p-Xylene	< 0.43	ug/l	0.43	1.38	1	8260B		5/15/2019	CJR	1
o-Xylene	< 0.29	ug/l	0.29	0.93	1	8260B		5/15/2019	CJR	1

"J" Flag: Analyte detected between LOD and LOQ

LOD Limit of Detection

LOQ Limit of Quantitation

Code	Comment
1	Laboratory QC within limits.

All solid sample results reported on a dry weight basis unless otherwise indicated. All LOD's and LOQ's are adjusted for dilutions but not dry weight. Subcontracted results are denoted by SUB in the analyst field.

Authorized Signature

Michael Ricker

Synergy

Environmental Lab, Inc.

1990 Prospect Ct. • Appleton, WI 54914
920-830-2455 • FAX 920-733-0631

Sample Handling Request

Rush Analysis Date Required _____
(Rushes accepted only with prior authorization)

Normal Turn Around

Lab I.D. # _____
Account No. : _____ Quote No.: _____
Project #: _____
Sampler: (signature) Rob Wilmoth

Project (Name / Location): Mr P's Tires
Reports To: Marta Pachefsky Invoice To: Marta Pachefsky
Company: _____ Company: Yo Metco
Address: 4475 Club Dr Address: 709 Gillette St, ste 3
City State Zip: Slinger, WI 53086 City State Zip: Lacrosse, WI 54603
Phone: 414-336-6053 Phone: 608 781-8879
FAX: _____ FAX: _____

Analysis Requested		Other Analysis												
DRG (Mod DRO Sep 95)	GRO (Mod GRO Sep 95)	LEAD	NITRATE/NITRITE	OIL & GREASE	PAH (EPA 8270)	PCB	PVOC (EPA 8021)	PVOC + NAPHTHALENE	SULFATE	TOTAL SUSPENDED SOLIDS	VOC DW (EPA 524.2)	VOC (EPA 8260)	8-RCRA METALS	PID/ FID

Lab I.D.	Sample I.D.	Collection Date	Time	Comp	Grab	Filtered Y/N	No. of Containers	Sample Type (Matrix)*	Preservation
S056132 A	mw-6	5-6-19	3:17			✓	3	GW	HCL
B	mw-5	↓	3:40			↓	↓	↓	↓
C	mw-2	↓	4:15			↓	↓	↓	↓
D	mw-1	↓	4:44			↓	↓	↓	↓
E	Tap BCK								

Comments/Special Instructions (*Specify groundwater "GW", Drinking Water "DW", Waste Water "WW", Soil "S", Air "A", Oil, Sludge etc.)
Lab to send copy of report to METCO/Jason P. (Invoice to METCO)
AUC rates apply
Agent status

Sample Integrity - To be completed by receiving lab.
Method of Shipment: GC
Temp. of Temp. Blank: _____ °C On Ice
Cooler seal intact upon receipt: Yes _____ No

Relinquished By: (sign) [Signature] Time: 5:30 Date: 5-7-19
Received By: (sign) _____ Time: _____ Date: _____
Received in Laboratory By: [Signature] Time: 8:00 Date: 5/9/19

Synergy Environmental Lab,

1990 Prospect Ct., Appleton, WI 54914 *P 920-830-2455 * F 920-733-0631

MARK PACHEFSKY
MARK PACHEFSKY
4475 CLUB DRIVE
SLINGER, WI 53086

Report Date 07-Aug-19

Project Name MR P'S TIRES
Project #

Invoice # E36554

Lab Code 5036554A
Sample ID MW-6
Sample Matrix Water
Sample Date 7/30/2019

	Result	Unit	LOD	LOQ	Dil	Method	Ext Date	Run Date	Analyst	Code
Organic										
PVOC + Naphthalene										
Benzene	< 0.32	ug/l	0.32	1.02	1	GRO95/8021		7/31/2019	CJR	1
Ethylbenzene	< 0.29	ug/l	0.29	0.94	1	GRO95/8021		7/31/2019	CJR	1
Methyl tert-butyl ether (MTBE)	< 0.24	ug/l	0.24	0.78	1	GRO95/8021		7/31/2019	CJR	1
Naphthalene	< 1.3	ug/l	1.3	4.1	1	GRO95/8021		7/31/2019	CJR	1
Toluene	0.37 "J"	ug/l	0.29	0.93	1	GRO95/8021		7/31/2019	CJR	1
1,2,4-Trimethylbenzene	< 0.46	ug/l	0.46	1.46	1	GRO95/8021		7/31/2019	CJR	1
1,3,5-Trimethylbenzene	< 0.67	ug/l	0.67	2.15	1	GRO95/8021		7/31/2019	CJR	1
m&p-Xylene	< 0.52	ug/l	0.52	1.67	1	GRO95/8021		7/31/2019	CJR	1
o-Xylene	< 0.7	ug/l	0.7	2.24	1	GRO95/8021		7/31/2019	CJR	1

Project Name MR P'S TIRES
Project #

Invoice # E36554

Lab Code 5036554B
Sample ID MW-5
Sample Matrix Water
Sample Date 7/30/2019

	Result	Unit	LOD	LOQ	Dil	Method	Ext Date	Run Date	Analyst	Code
Organic										
PVOC + Naphthalene										
Benzene	52	ug/l	0.32	1.02	1	GRO95/8021		7/31/2019	CJR	1
Ethylbenzene	10.1	ug/l	0.29	0.94	1	GRO95/8021		7/31/2019	CJR	1
Methyl tert-butyl ether (MTBE)	< 0.24	ug/l	0.24	0.78	1	GRO95/8021		7/31/2019	CJR	1
Naphthalene	11.3	ug/l	1.3	4.1	1	GRO95/8021		7/31/2019	CJR	1
Toluene	4.8	ug/l	0.29	0.93	1	GRO95/8021		7/31/2019	CJR	1
1,2,4-Trimethylbenzene	0.97 "J"	ug/l	0.46	1.46	1	GRO95/8021		7/31/2019	CJR	1
1,3,5-Trimethylbenzene	< 0.67	ug/l	0.67	2.15	1	GRO95/8021		7/31/2019	CJR	1
m&p-Xylene	4.5	ug/l	0.52	1.67	1	GRO95/8021		7/31/2019	CJR	1
o-Xylene	< 0.7	ug/l	0.7	2.24	1	GRO95/8021		7/31/2019	CJR	1

Lab Code 5036554C
Sample ID MW-2
Sample Matrix Water
Sample Date 7/30/2019

	Result	Unit	LOD	LOQ	Dil	Method	Ext Date	Run Date	Analyst	Code
Organic										
PVOC + Naphthalene										
Benzene	400	ug/l	3.2	10.2	10	GRO95/8021		7/31/2019	CJR	1
Ethylbenzene	36	ug/l	2.9	9.4	10	GRO95/8021		7/31/2019	CJR	1
Methyl tert-butyl ether (MTBE)	5 "J"	ug/l	2.4	7.8	10	GRO95/8021		7/31/2019	CJR	1
Naphthalene	16.5 "J"	ug/l	13	41	10	GRO95/8021		7/31/2019	CJR	1
Toluene	11.1	ug/l	2.9	9.3	10	GRO95/8021		7/31/2019	CJR	1
1,2,4-Trimethylbenzene	< 4.6	ug/l	4.6	14.6	10	GRO95/8021		7/31/2019	CJR	1
1,3,5-Trimethylbenzene	< 6.7	ug/l	6.7	21.5	10	GRO95/8021		7/31/2019	CJR	1
m&p-Xylene	21.7	ug/l	5.2	16.7	10	GRO95/8021		7/31/2019	CJR	1
o-Xylene	< 7	ug/l	7	22.4	10	GRO95/8021		7/31/2019	CJR	1

Lab Code 5036554D
Sample ID MW-1
Sample Matrix Water
Sample Date 7/30/2019

	Result	Unit	LOD	LOQ	Dil	Method	Ext Date	Run Date	Analyst	Code
Organic										
PVOC + Naphthalene										
Benzene	1390	ug/l	16	51	50	GRO95/8021		7/31/2019	CJR	1
Ethylbenzene	2170	ug/l	14.5	47	50	GRO95/8021		7/31/2019	CJR	1
Methyl tert-butyl ether (MTBE)	< 12	ug/l	12	39	50	GRO95/8021		7/31/2019	CJR	1
Naphthalene	225	ug/l	65	205	50	GRO95/8021		7/31/2019	CJR	1
Toluene	204	ug/l	14.5	46.5	50	GRO95/8021		7/31/2019	CJR	1
1,2,4-Trimethylbenzene	1300	ug/l	23	73	50	GRO95/8021		7/31/2019	CJR	1
1,3,5-Trimethylbenzene	217	ug/l	33.5	107.5	50	GRO95/8021		7/31/2019	CJR	1
m&p-Xylene	5100	ug/l	26	83.5	50	GRO95/8021		7/31/2019	CJR	1
o-Xylene	1370	ug/l	35	112	50	GRO95/8021		7/31/2019	CJR	1

Project Name MR P'S TIRES

Invoice # E36554

Project #

Lab Code 5036554E

Sample ID TB

Sample Matrix Water

Sample Date 7/30/2019

	Result	Unit	LOD	LOQ	Dil	Method	Ext Date	Run Date	Analyst	Code
Organic										
PVOC + Naphthalene										
Benzene	< 0.32	ug/l	0.32	1.02	1	GRO95/8021		8/6/2019	CJR	1
Ethylbenzene	< 0.29	ug/l	0.29	0.94	1	GRO95/8021		8/6/2019	CJR	1
Methyl tert-butyl ether (MTBE)	< 0.24	ug/l	0.24	0.78	1	GRO95/8021		8/6/2019	CJR	1
Naphthalene	< 1.3	ug/l	1.3	4.1	1	GRO95/8021		8/6/2019	CJR	1
Toluene	< 0.29	ug/l	0.29	0.93	1	GRO95/8021		8/6/2019	CJR	1
1,2,4-Trimethylbenzene	< 0.46	ug/l	0.46	1.46	1	GRO95/8021		8/6/2019	CJR	1
1,3,5-Trimethylbenzene	< 0.67	ug/l	0.67	2.15	1	GRO95/8021		8/6/2019	CJR	1
m&p-Xylene	< 0.52	ug/l	0.52	1.67	1	GRO95/8021		8/6/2019	CJR	1
o-Xylene	< 0.7	ug/l	0.7	2.24	1	GRO95/8021		8/6/2019	CJR	1

"J" Flag: Analyte detected between LOD and LOQ

LOD Limit of Detection

LOQ Limit of Quantitation

Code	Comment
1	Laboratory QC within limits.

All solid sample results reported on a dry weight basis unless otherwise indicated. All LOD's and LOQ's are adjusted for dilutions but not dry weight. Subcontracted results are denoted by SUB in the analyst field.

Authorized Signature

Michael Ricker

CHAIN OF STUDY RECORD

Synergy

Chain # No 3361

Page 1 of 1

Environmental Lab, Inc.

1990 Prospect Ct. • Appleton, WI 54914
920-830-2455 • FAX 920-733-0631

Sample Handling Request

Rush Analysis Date Required _____
(Rushes accepted only with prior authorization)

Normal Turn Around

Lab I.D. # _____
 Account No. : _____ Quote No. : _____
 Project #: _____
 Sampler: (signature) *Rob Wilmoth*

Project (Name / Location): *Mr. P's Tires, Forne / Milwaukee, WI*
 Reports To: *Mark Pachefsky* Invoice To: *Mark Pachefsky*
 Company *Go METCO*
 Address *4475 Club Dr.* Address *709 Gillette St, Ste #3*
 City State Zip *Slinger, WI 53086* City State Zip *La Crosse, WI 54603*
 Phone *414-336-6053* Phone *608-781-8879*
 FAX _____ FAX _____

Analysis Requested		Other Analysis				PID/ FID									
DRO (Mod DRO Sep 95)	GRO (Mod GRO Sep 95)	LEAD	NITRATE/NITRITE	OIL & GREASE	PAH (EPA 8270)	PCB	PVOC (EPA 8021)	PVOC + NAPHTHALENE	SULFATE	TOTAL SUSPENDED SOLIDS	VOC DW (EPA 524.2)	VOC (EPA 8260)	8-RCRA METALS		

Lab I.D.	Sample I.D.	Collection Date	Time	Comp	Grab	Filtered Y/N	No. of Containers	Sample Type (Matrix)*	Preservation
5036554A	MW-6	7-30	9:11		X	N	3	GW	HCL
B	MW-5	7-30	9:38		X				
C	MW-2	7-30	9:55		X				
D	MW-1	7-30	10:33		X				
E	TB	7-30	-		X		1		

Comments/Special Instructions ("Specify groundwater "GW", Drinking Water "DW", Waste Water "WW", Soil "S", Air "A", Oil, Sludge etc.)

Lab to send copy of report to METCO (Jason A. (Invoice to METCO))
** Agent status*
** U & C Rates apply*

Sample Integrity - To be completed by receiving lab.
 Method of Shipment: *Gr*
 Temp. of Temp. Blank: _____ °C On Ice:
 Cooler seal intact upon receipt: Yes No

Relinquished By: (sign) *[Signature]* Time: *2:17* Date: *7-30-19*
 Received By: (sign) _____ Time: _____ Date: _____
 Received in Laboratory By: *[Signature]* Time: *3:00* Date: *7/31/19*