



*Excellence through experience™*

709 Gillette St., Ste 3, La Crosse, WI 54603 ♦ 1-800-552-2932 ♦ Fax (608) 781-8893 Email: rona@metcohq.com ♦ www.metcohq.com

January 28, 2020

BRRTS #: 03-41-563586

PECFA #: 53208-4036-05

Andy Alles  
Wisconsin Department of Natural Resources  
101 S Webster Street, P.O. Box 7921  
Madison, WI 53707-7921

Subject: Mr. P's Tire – Groundwater Monitoring Report

Dear Mr. Alles,

Enclosed is the report (2<sup>nd</sup> of 2) for the Mr. P's Tire site located in Milwaukee, Wisconsin. **This completes the Public Bidding Deferred work scope approved on March 25, 2019.**

### **Groundwater Monitoring Work Scope**

On October 23, 2019, METCO collected groundwater samples from four monitoring wells (MW-1, MW-2, MW-5, and MW-6) for PVOC and Naphthalene analysis. Field measurements for water level, Dissolved Oxygen, pH, ORP, specific conductance, and temperature were collected from the sampled monitoring wells. Water level measurements were also collected from two additional monitoring wells (MW-3 and MW-4).

On January 14, 2020, METCO collected groundwater samples from four monitoring wells (MW-1, MW-2, MW-5, and MW-6) for PVOC and Naphthalene analysis. Field measurements for water level, Dissolved Oxygen, pH, ORP, specific conductance, and temperature were collected from the sampled monitoring wells. Water level measurements were also collected from two additional monitoring wells (MW-3 and MW-4).

### **Groundwater Results**

**Monitoring Well MW-1:** Currently shows NR140 Enforcement Standard (ES) exceedances for Benzene (1,000 ppb), Ethylbenzene (1,520 ppb), Naphthalene (133 ppb), Trimethylbenzenes (1,068 ppb), and Xylene (5,020 ppb). Groundwater contaminant trends appear to be stable to decreasing. It does appear that fluctuations in the water table elevations correlate with fluctuations in the contaminant concentrations.

**Monitoring Well MW-2:** Currently shows an NR140 Enforcement Standard (ES) exceedance for Benzene (670 ppb). Contaminant levels appear to be stable.

**Monitoring Well MW-5:** Currently shows an NR140 Enforcement Standard (ES) exceedance for Benzene (33 ppb). Groundwater contaminant trends appear to be stable.

**Monitoring Well MW-6:** Currently shows no detects for PVOC and/or Naphthalene.

Please note that monitoring wells MW-3 and MW-4 have been historically clean and that only water levels were collected during the last four sampling events.

### Conclusions/Recommendations

Based on current results, METCO recommends that the Mr. P's Tire site be reviewed for the possibility of "closure" for the following reasons:

- 1) The extent and degree of petroleum contamination in soil and groundwater has been adequately defined.
- 2) The limited extent of soil contamination exceeding NR 720 Direct Contact RCL (area of G-2) can be addressed with a Cap Maintenance Plan (concrete/asphalt) as the entire property is concrete and asphalt.
- 3) Overall contaminant trends in groundwater appear to be stable to decreasing.
- 4) It does not appear that any underground utilities are acting as preferential pathways for contaminant migration due to the depths and that they are most likely backfilled with native soils.
- 5) The risk of vapor intrusion to the on-site building appears unlikely due to soil and groundwater contamination being greater than 10 feet from the building.
- 6) The subject property and surrounding properties are all served by the City of Milwaukee municipal water supply, which draws its potable water from Lake Michigan. METCO is not aware of any private water supply wells within 1,200 feet of the subject property.

Per WDNR response to this conclusion/recommendation METCO will proceed.

A Detailed Site Map, Groundwater Flow Maps (2), Groundwater Isoconcentration Map, Data Tables, Graphs (Watertable vs. Contaminant Concentration) and Laboratory Documents have been attached.

If you have any questions or comments, please feel free to call (608-781-8879) or email at [jasonp@metcohq.com](mailto:jasonp@metcohq.com).

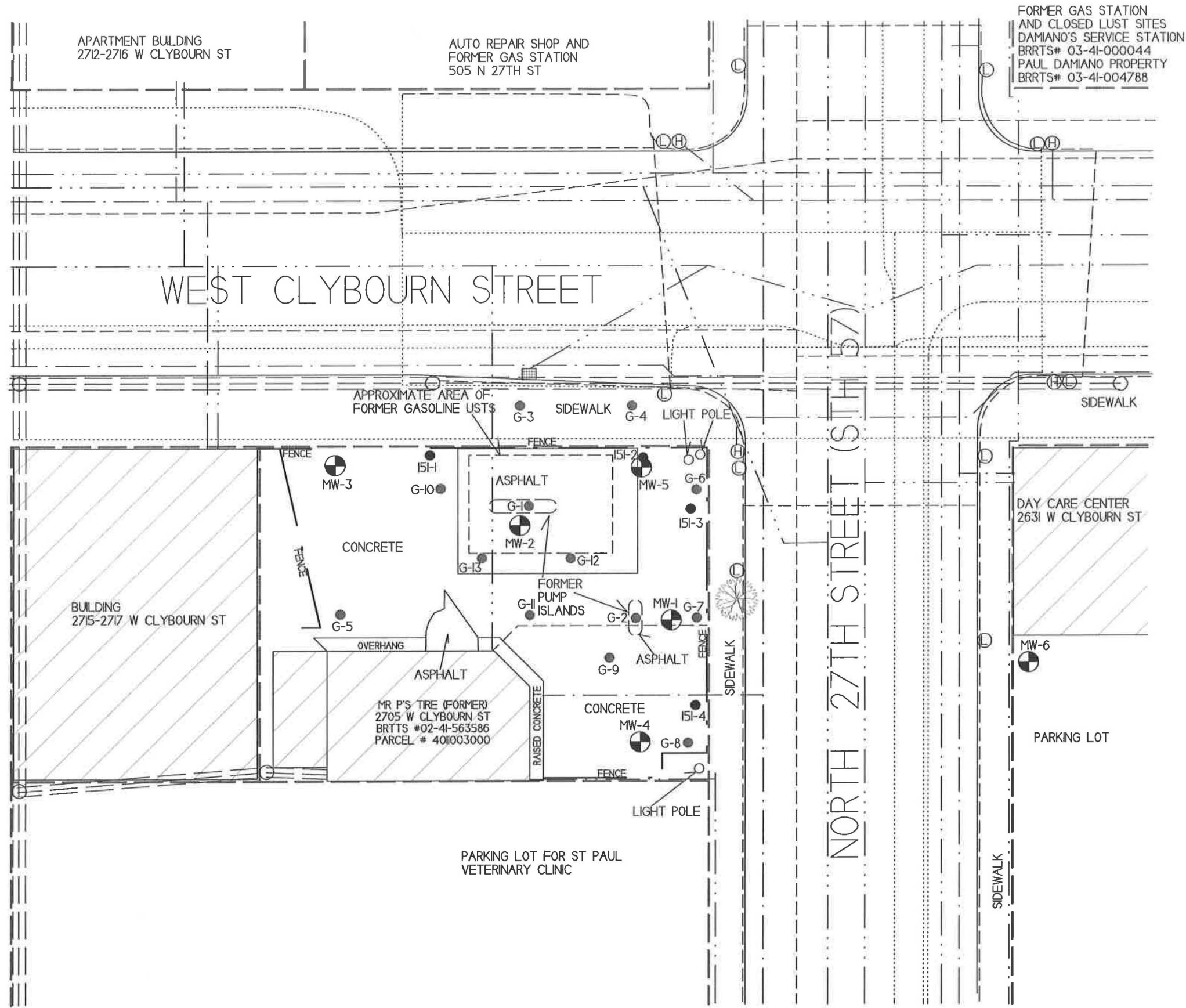
Sincerely,



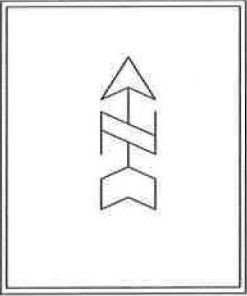
Jason T. Powell  
Staff Scientist

Attachments

c: Mark Pachefsky – Client



<b>DETAILED SITE MAP</b>	
<b>MR P'S TIRE</b>	
 709 Gillette St. Suite 3 La Crosse, WI 54603 Tel: (608) 781-8879 Fax: (608) 781-8893 <small>Excellence through experience</small>	MILWAUKEE, WISCONSIN DRAWN BY: ED DATE: 9/2/16 MODIFIED BY: MM DATE: 2/15/17



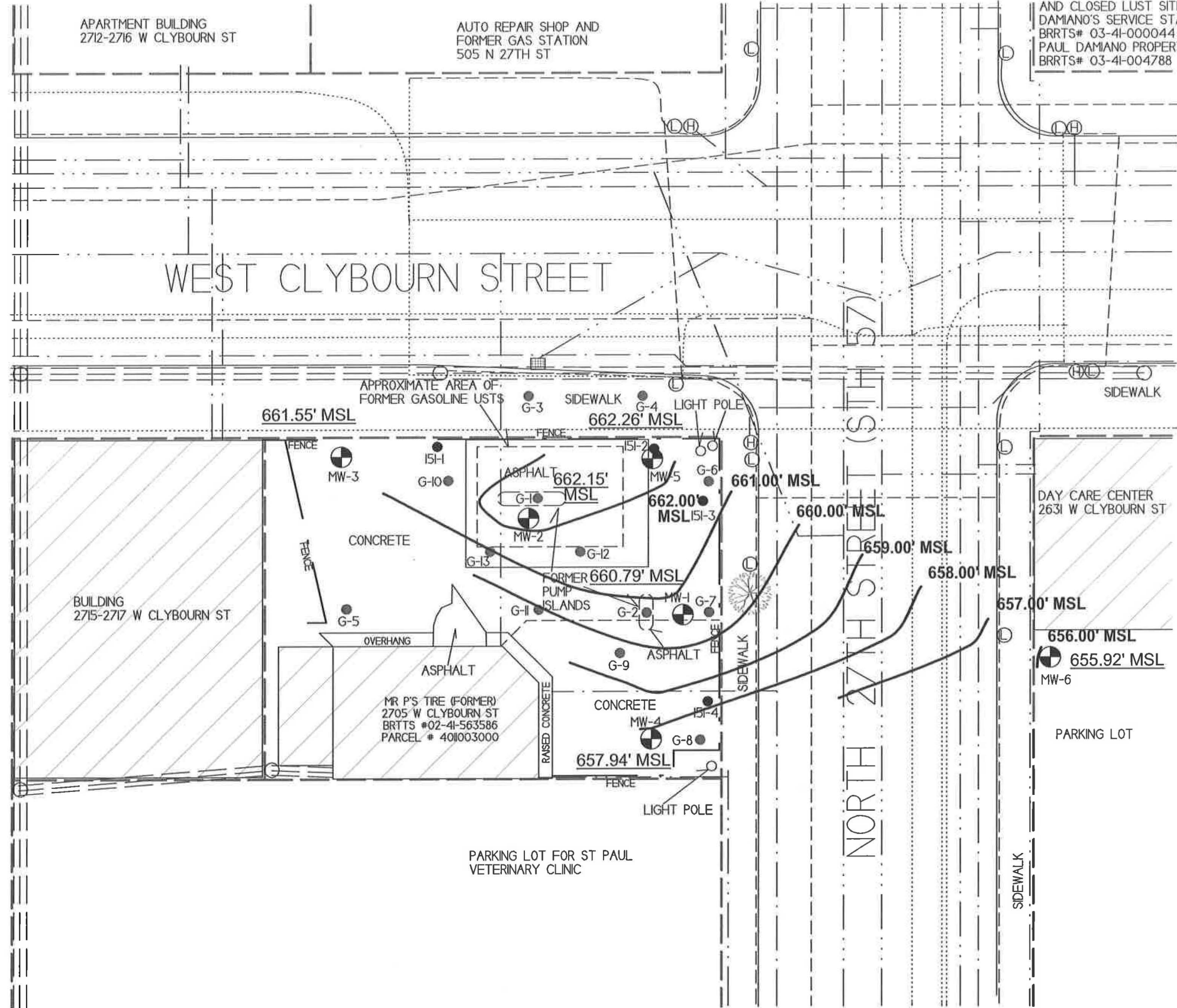
NOTE: INFORMATION BASED ON AVAILABLE DATA ACTUAL CONDITIONS MAY DIFFER

- - SOIL BORING LOCATION (PHASE 2 INVESTIGATION)
- ⊕ - MONITORING WELL LOCATION
- - GEOPROBE BORING LOCATION
- - UTILITY POLE
- ⊙ - STREET LIGHT/TRAFFIC SIGNAL
- ⊙ - SEWER MAN HOLE
- ⊞ - STORM DRAIN
- ⊕ - FIRE HYDRANT
  
- - WATER LINE
- ..... - SANITARY SEWER LINE
- - NATURAL GAS LINE
- - BURIED ELECTRIC LINE
- ==== - OVERHEAD UTILITIES
- - TELEPHONE/CABLE LINE
- - PROPERTY BOUNDARY

APARTMENT BUILDING  
2712-2716 W CLYBOURN ST

AUTO REPAIR SHOP AND  
FORMER GAS STATION  
505 N 27TH ST

FORMER GAS STATION  
AND CLOSED LUST SITES  
DAMIANO'S SERVICE STATION  
BRRTS# 03-4I-000044  
PAUL DAMIANO PROPERTY  
BRRTS# 03-4I-004788



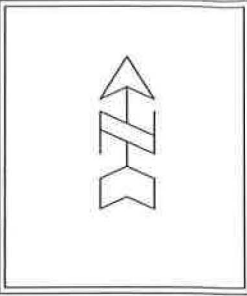
**GROUNDWATER FLOW  
DIRECTION (10/23/2019)**

**MR P'S TIRE**

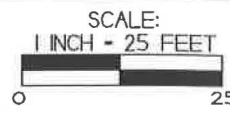
**MILWAUKEE,  
WISCONSIN**

**METCO**  
709 Gillette St, Suite 2  
La Crosse, WI 54603  
Tel: (608) 781-8879  
Fax: (608) 781-8893

**DRAWN BY: ED DATE: 9/2/16**  
**MODIFIED BY: RW DATE: 1/23/20**



NOTE: INFORMATION BASED ON AVAILABLE DATA  
ACTUAL CONDITIONS MAY DIFFER

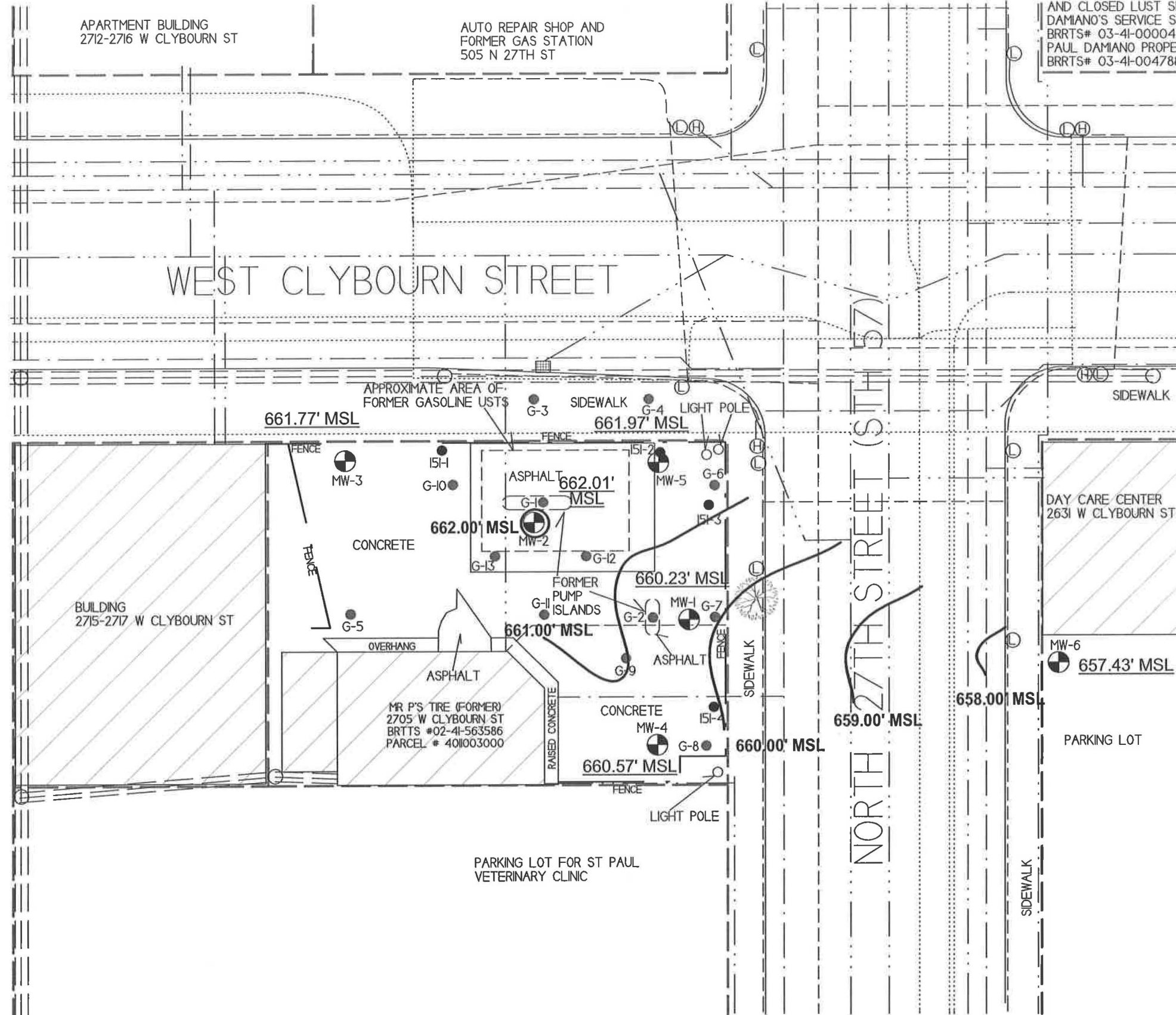


- - SOIL BORING LOCATION (PHASE 2 INVESTIGATION)
- ⊕ - MONITORING WELL LOCATION
- - GEOPROBE BORING LOCATION
- - UTILITY POLE
- ⊙ - STREET LIGHT/TRAFFIC SIGNAL
- ⊗ - SEWER MAN HOLE
- ▤ - STORM DRAIN
- ⊕ - FIRE HYDRANT
- · — · — · — · — - WATER LINE
- · — · — · — · — · — · - SANITARY SEWER LINE
- · — · — · — · — · — · - NATURAL GAS LINE
- - - - - BURIED ELECTRIC LINE
- ≡ ≡ ≡ ≡ ≡ ≡ ≡ ≡ ≡ ≡ ≡ ≡ ≡ ≡ ≡ ≡ ≡ - OVERHEAD UTILITIES
- - - - - TELEPHONE/CABLE LINE
- - - - - PROPERTY BOUNDARY

APARTMENT BUILDING  
2712-2716 W CLYBOURN ST

AUTO REPAIR SHOP AND  
FORMER GAS STATION  
505 N 27TH ST

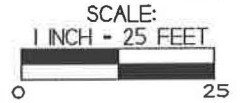
FORMER GAS STATION  
AND CLOSED LUST SITES  
DAMIANO'S SERVICE STATION  
BRTTS# 03-4I-000044  
PAUL DAMIANO PROPERTY  
BRTTS# 03-4I-004788



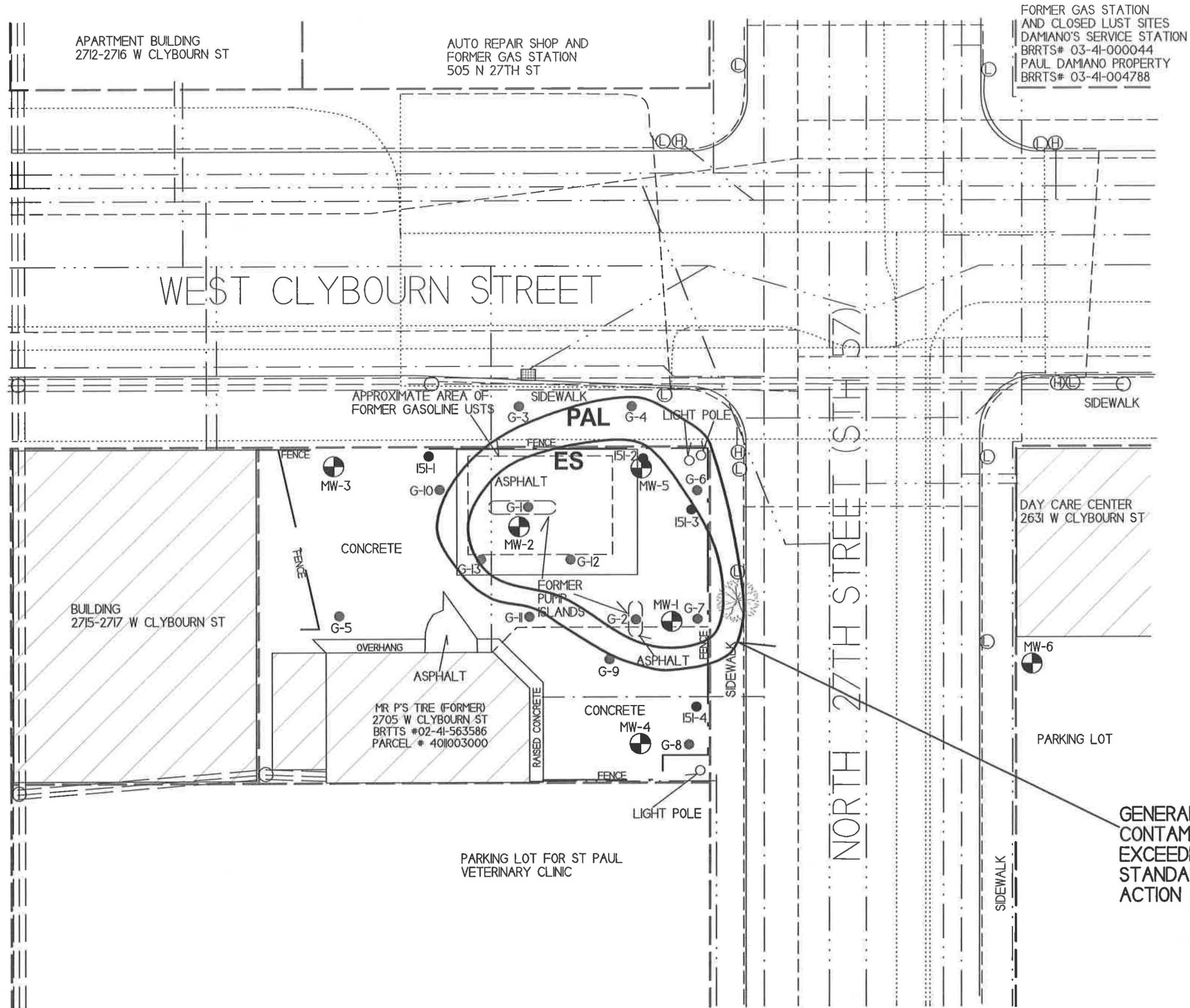
GROUNDWATER FLOW DIRECTION (1/14/2020)	
MR P'S TIRE	
METCO 709 Gillette St, Suite 3 La Crosse, WI 54603 Tel: (608) 781-8879 Fax: (608) 781-8893	MILWAUKEE, WISCONSIN
	DRAWN BY: ED DATE: 9/2/16 MODIFIED BY: MM DATE: 2/5/17



NOTE: INFORMATION BASED ON AVAILABLE  
DATA ACTUAL CONDITIONS MAY DIFFER



- - SOIL BORING LOCATION (PHASE 2 INVESTIGATION)
- ⊙ - MONITORING WELL LOCATION
- - GEOPROBE BORING LOCATION
- - UTILITY POLE
- Ⓛ - STREET LIGHT/TRAFFIC SIGNAL
- ⊗ - SEWER MAN HOLE
- ▢ - STORM DRAIN
- ⊕ - FIRE HYDRANT
- · — · — · — - WATER LINE
- · - · - · - · - · - SANITARY SEWER LINE
- · — · — · — · - NATURAL GAS LINE
- - - - - BURIED ELECTRIC LINE
- ⚡⚡⚡⚡⚡⚡⚡⚡⚡⚡⚡⚡⚡ OVERHEAD UTILITIES
- · - · - · - TELEPHONE/CABLE LINE
- - - - - PROPERTY BOUNDARY



FORMER GAS STATION  
AND CLOSED LUST SITES  
DAMIANO'S SERVICE STATION  
BRRTS# 03-41-000044  
PAUL DAMIANO PROPERTY  
BRRTS# 03-41-004788

APARTMENT BUILDING  
2712-2716 W CLYBOURN ST

AUTO REPAIR SHOP AND  
FORMER GAS STATION  
505 N 27TH ST

WEST CLYBOURN STREET

NORTH 27TH STREET (STH 57)

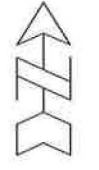

BUILDING  
2715-2717 W CLYBOURN ST

MR P'S TIRE (FORMER)  
2705 W CLYBOURN ST  
BRRTS #02-41-563586  
PARCEL # 4011003000

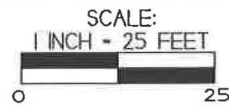
PARKING LOT FOR ST PAUL  
VETERINARY CLINIC

DAY CARE CENTER  
2631 W CLYBOURN ST

PARKING LOT

GROUNDWATER ISOCONCENTRATION MAP (1-14-20)		
MR P'S TIRE		
 <small>709 Gillette St. Suite 3 La Crosse, WI 54603 Tel: (608) 781-8879 Fax: (608) 781-8893</small>	MILWAUKEE, WISCONSIN	
<small>Drawn By: ED DATE: 9/2/20 Modified By: RW DATE: 1/24/20</small>		

NOTE: INFORMATION BASED ON AVAILABLE  
DATA ACTUAL CONDITIONS MAY DIFFER



- - SOIL BORING LOCATION (PHASE 2 INVESTIGATION)
  - ⊕ - MONITORING WELL LOCATION
  - - GEOPROBE BORING LOCATION
  - - UTILITY POLE
  - ⊙ - STREET LIGHT/TRAFFIC SIGNAL
  - ⊗ - SEWER MAN HOLE
  - ▣ - STORM DRAIN
  - ⊕ - FIRE HYDRANT
- 
- — — — — WATER LINE
  - - - - - SANITARY SEWER LINE
  - · - · - · - NATURAL GAS LINE
  - - - - - BURIED ELECTRIC LINE
  - ≡ ≡ ≡ ≡ ≡ OVERHEAD UTILITIES
  - · - · - · TELEPHONE/CABLE LINE
  - - - - - PROPERTY BOUNDARY

GENERAL EXTENT OF PETROLEUM  
CONTAMINATION IN GROUNDWATER  
EXCEEDING NR140 ENFORCEMENT  
STANDARDS (ES) AND/OR PREVENTIVE  
ACTION LIMITS (PAL)

**A.1 Groundwater Analytical Table**  
**Mr. P's Tires, Former BRRTS #02-41-563586**

**Well MW-1**

**PVC Elevation =** 665.11 (feet) (MSL)

Date	Water Elevation (in feet msl)	Depth to water from top of PVC (in feet)	Lead (ppb)	Benzene (ppb)	Ethyl-benzene (ppb)	MTBE (ppb)	Naphthalene (ppb)	Toluene (ppb)	Trimethyl-benzenes (ppb)	Xylene (Total) (ppb)
10/30/17	659.95	5.16	<0.9	410	320	<8.2	50	63	305	1890
01/24/18	659.44	5.67	<0.9	1110	960	<5.7	86	60	455	1630
08/20/18	659.90	5.21	NS	1260	1530	<5.7	120	80	776	2760
11/14/18	660.30	4.81	NS	950	2090	<5.7	269	189	1730	6450
05/06/19	660.81	4.30	NS	1200	3070	<14	330	268	2430	10700
07/30/19	659.97	5.14	NS	1390	2170	<12	225	204	1517	6470
10/23/19	660.79	4.32	NS	1230	1730	<12	219	124	1010	4020
01/14/20	660.23	4.88	NS	1000	1520	<14	133	130	1068	5020
<b>ENFORCEMENT STANDARD ES = Bold</b>			<b>15</b>	<b>5</b>	<b>700</b>	<b>60</b>	<b>100</b>	<b>800</b>	<b>480</b>	<b>2000</b>
<b>PREVENTIVE ACTION LIMIT PAL = Italics</b>			<i>1.5</i>	<i>0.5</i>	<i>140</i>	<i>12</i>	<i>10</i>	<i>160</i>	<i>96</i>	<i>400</i>

(ppb) = parts per billion (ppm) = parts per million  
 NS = Not Sampled NM = Not Measured  
 Note: Elevations are presented in feet mean sea level (msl).

**Well MW-2**

**PVC Elevation =** 665.87 (feet) (MSL)

Date	Water Elevation (in feet msl)	Depth to water from top of PVC (in feet)	Lead (ppb)	Benzene (ppb)	Ethyl-benzene (ppb)	MTBE (ppb)	Naphthalene (ppb)	Toluene (ppb)	Trimethyl-benzenes (ppb)	Xylene (Total) (ppb)
10/30/17	660.60	5.27	<0.9	540	110	<8.2	119	7.6	71.7	57.3
01/24/18	661.56	4.31	<0.9	680	92	<5.7	33	17.2	23.4	48.3
08/20/18	662.28	3.59	NS	500	79	<5.7	33	16	<14.8	42.1
11/14/18	662.41	3.46	NS	266	32	<5.7	<17	11.2	<14.8	30.2
05/06/19	662.67	3.20	NS	540	50	2.15	<10.5	8.3	<7.15	28.45
07/30/19	662.37	3.50	NS	400	36	5	16.5	11.1	<11.3	21.7-22.40
10/23/19	662.15	3.72	NS	600	44	<2.4	171	13.7	<11.3	46-53
01/14/20	662.01	3.86	NS	670	46	<2.8	<21	11	<14.3	52.9
<b>ENFORCEMENT STANDARD ES = Bold</b>			<b>15</b>	<b>5</b>	<b>700</b>	<b>60</b>	<b>100</b>	<b>800</b>	<b>480</b>	<b>2000</b>
<b>PREVENTIVE ACTION LIMIT PAL = Italics</b>			<i>1.5</i>	<i>0.5</i>	<i>140</i>	<i>12</i>	<i>10</i>	<i>160</i>	<i>96</i>	<i>400</i>

(ppb) = parts per billion (ppm) = parts per million  
 NS = Not Sampled NM = Not Measured  
 Note: Elevations are presented in feet mean sea level (msl).

**Well MW-3**

**PVC Elevation =** 666.05 (feet) (MSL)

Date	Water Elevation (in feet msl)	Depth to water from top of PVC (in feet)	Lead (ppb)	Benzene (ppb)	Ethyl-benzene (ppb)	MTBE (ppb)	Naphthalene (ppb)	Toluene (ppb)	Trimethyl-benzenes (ppb)	Xylene (Total) (ppb)
10/30/17	654.97	11.08	<0.9	<0.17	<0.2	<0.82	<2.17	<0.67	<2.05	<1.95
01/24/18	659.07	6.98	<0.9	<0.22	<0.53	<0.57	<1.7	<0.45	<1.48	<1.58
08/20/18	662.53	3.52	NS	<0.22	<0.53	<0.57	<1.7	<0.45	<1.48	<1.58
11/14/18	662.40	3.65	NS	<0.22	<0.53	<0.57	<1.7	<0.45	<1.48	<1.58
05/06/19	662.82	3.23	NOT SAMPLED							
07/30/19	662.47	3.58	NOT SAMPLED							
10/23/19	661.55	4.50	NOT SAMPLED							
01/14/20	661.77	4.28	NOT SAMPLED							
<b>ENFORCEMENT STANDARD ES = Bold</b>			<b>15</b>	<b>5</b>	<b>700</b>	<b>60</b>	<b>100</b>	<b>800</b>	<b>480</b>	<b>2000</b>
<b>PREVENTIVE ACTION LIMIT PAL = Italics</b>			<i>1.5</i>	<i>0.5</i>	<i>140</i>	<i>12</i>	<i>10</i>	<i>160</i>	<i>96</i>	<i>400</i>

(ppb) = parts per billion (ppm) = parts per million  
 NS = Not Sampled NM = Not Measured  
 Note: Elevations are presented in feet mean sea level (msl).

**A.1 Groundwater Analytical Table**  
**Mr. P's Tires, Former BRRTS #02-41-563586**

**Well MW-4**

PVC Elevation = 664.83 (feet) (MSL)

Date	Water Elevation (in feet msl)	Depth to water from top of PVC (in feet)	Lead (ppb)	Benzene (ppb)	Ethyl-benzene (ppb)	MTBE (ppb)	Naphthalene (ppb)	Toluene (ppb)	Trimethyl-benzenes (ppb)	Xylene (Total) (ppb)
10/30/17	659.93	4.90	<0.9	<0.17	<0.2	<0.82	<2.17	<0.67	<2.05	<1.95
01/24/18	659.78	5.05	<0.9	<0.22	<0.53	<0.57	<1.7	<0.45	<1.48	<1.58
08/20/18	659.85	4.98	NS	0.36	<0.53	<0.57	<1.7	<0.45	<1.48	<1.58
11/14/18	659.84	4.99	NS	<0.22	<0.53	<0.57	<1.7	<0.45	<1.48	<1.58
05/06/19	660.51	4.32	NOT SAMPLED							
07/30/19	659.61	5.22	NOT SAMPLED							
10/23/19	657.94	6.89	NOT SAMPLED							
01/14/20	660.57	4.26	NOT SAMPLED							
<b>ENFORCEMENT STANDARD ES = Bold</b>			<b>15</b>	<b>5</b>	<b>700</b>	<b>60</b>	<b>100</b>	<b>800</b>	<b>480</b>	<b>2000</b>
<b>PREVENTIVE ACTION LIMIT PAL = Italics</b>			<i>1.5</i>	<i>0.5</i>	<i>140</i>	<i>12</i>	<i>10</i>	<i>160</i>	<i>96</i>	<i>400</i>

(ppb) = parts per billion (ppm) = parts per million

NS = Not Sampled NM = Not Measured

Note: Elevations are presented in feet mean sea level (msl).

**Well MW-5**

PVC Elevation = 666.09 (feet) (MSL)

Date	Water Elevation (in feet msl)	Depth to water from top of PVC (in feet)	Lead (ppb)	Benzene (ppb)	Ethyl-benzene (ppb)	MTBE (ppb)	Naphthalene (ppb)	Toluene (ppb)	Trimethyl-benzenes (ppb)	Xylene (Total) (ppb)
10/30/17	662.31	3.78	2.7	34	46	<0.82	59	2.27	31.5	13.85
01/24/18	660.15	5.94	1.2	43	41	<0.57	22.8	6.2	7	7.29
08/20/18	662.28	3.81	NS	72	27.6	<0.57	22.1	8.5	5.44	11.87
11/14/18	662.39	3.70	NS	43	18	<0.57	18	6.0	2.96	6.25
05/06/19	662.70	3.39	NS	60	14.3	<0.57	8.9	5.2	2.60	5.87
07/30/19	662.36	3.73	NS	52	10.1	<0.24	11.3	4.8	0.97-1.64	4.5-5.20
10/23/19	662.26	3.83	NS	56	7.3	<0.24	12	4.3	1.09-1.76	6.39
01/14/20	661.97	4.12	NS	33	2.61	0.72	9.8	2.05	<1.43	3.92
<b>ENFORCEMENT STANDARD ES = Bold</b>			<b>15</b>	<b>5</b>	<b>700</b>	<b>60</b>	<b>100</b>	<b>800</b>	<b>480</b>	<b>2000</b>
<b>PREVENTIVE ACTION LIMIT PAL = Italics</b>			<i>1.5</i>	<i>0.5</i>	<i>140</i>	<i>12</i>	<i>10</i>	<i>160</i>	<i>96</i>	<i>400</i>

(ppb) = parts per billion (ppm) = parts per million

NS = Not Sampled NM = Not Measured

Note: Elevations are presented in feet mean sea level (msl).

**Well MW-6**

PVC Elevation = 665.89 (feet) (MSL)

Date	Water Elevation (in feet msl)	Depth to water from top of PVC (in feet)	Lead (ppb)	Benzene (ppb)	Ethyl-benzene (ppb)	MTBE (ppb)	Naphthalene (ppb)	Toluene (ppb)	Trimethyl-benzenes (ppb)	Xylene (Total) (ppb)
10/30/17	663.14	2.75	<0.9	<0.17	<0.2	<0.82	<2.17	<0.67	<2.05	<1.95
01/24/18	663.43	2.46	<0.9	<0.22	<0.53	<0.57	<1.7	<0.45	<1.48	<1.58
08/20/18	654.77	11.12	NS	0.28	<0.53	<0.57	<1.7	<0.45	<1.48	<1.58
11/14/18	657.12	8.77	NS	0.294	<0.53	<0.57	<1.7	1.01	<1.48	2.08
05/06/19	657.53	8.36	NS	<0.22	<0.53	<0.57	<1.7	<0.45	<1.48	<1.58
07/30/19	655.79	10.10	NS	<0.32	<0.29	<0.24	<1.3	0.37	<1.13	<1.22
10/23/19	655.92	9.97	NS	<0.32	<0.29	<0.24	<1.3	<0.29	<1.13	<1.22
01/14/20	657.43	8.46	NS	<0.22	<0.26	<0.28	<2.1	<0.19	<1.43	<0.72
<b>ENFORCEMENT STANDARD ES = Bold</b>			<b>15</b>	<b>5</b>	<b>700</b>	<b>60</b>	<b>100</b>	<b>800</b>	<b>480</b>	<b>2000</b>
<b>PREVENTIVE ACTION LIMIT PAL = Italics</b>			<i>1.5</i>	<i>0.5</i>	<i>140</i>	<i>12</i>	<i>10</i>	<i>160</i>	<i>96</i>	<i>400</i>

(ppb) = parts per billion (ppm) = parts per million

NS = Not Sampled NM = Not Measured

Note: Elevations are presented in feet mean sea level (msl).



**A.6 Water Level Elevations**  
**Mr. P's Tires, Former BRRS #02-41-563586**  
**Milwaukee, Wisconsin**

	<b>MW-1</b>	<b>MW-2</b>	<b>MW-3</b>	<b>MW-4</b>	<b>MW-5</b>	<b>MW-6</b>
<b>Ground Surface (feet msl)</b>	665.54	666.27	666.47	665.19	666.49	666.23
<b>PVC top (feet msl)</b>	665.11	665.87	666.05	664.83	666.09	665.89
<b>Well Depth (feet)</b>	14.00	14.00	14.00	14.00	14.00	14.00
<b>Top of screen (feet msl)</b>	661.54	662.27	662.47	661.19	662.49	662.23
<b>Bottom of screen (feet msl)</b>	651.54	652.27	652.47	651.19	652.49	652.23
<b>Depth to Water From Top of PVC (feet)</b>						
<b>10/30/17</b>	5.16	5.27	11.08	4.90	3.78	2.75
<b>01/24/18</b>	5.67	4.31	6.98	5.05	5.94	2.46
<b>08/20/18</b>	5.21	3.59	3.52	4.98	3.81	11.12
<b>11/14/18</b>	4.81	3.46	3.65	4.99	3.70	8.77
<b>05/06/19</b>	4.30	3.20	3.23	4.32	3.39	8.36
<b>07/30/19</b>	5.14	3.50	3.58	5.22	3.73	10.10
<b>10/23/2019</b>	4.32	3.72	4.50	6.89	3.83	9.97
<b>1/14/2020</b>	4.88	3.86	4.28	4.26	4.12	8.46
<b>Depth to Water From Ground Surface (feet)</b>						
<b>10/30/17</b>	5.59	5.67	11.50	5.26	4.18	3.09
<b>01/24/18</b>	6.10	4.71	7.40	5.41	6.34	2.80
<b>08/20/18</b>	5.64	3.99	3.94	5.34	4.21	11.46
<b>11/14/18</b>	5.24	3.86	4.07	5.35	4.10	9.11
<b>05/06/19</b>	4.73	3.60	3.65	4.68	3.79	8.70
<b>07/30/19</b>	5.57	3.90	4.00	5.58	4.13	10.44
<b>10/23/2019</b>	4.75	4.12	4.92	7.25	4.23	10.31
<b>1/14/2020</b>	5.31	4.26	4.70	4.62	4.52	8.80
<b>Groundwater Elevation (feet msl)</b>						
<b>10/30/17</b>	659.95	660.60	654.97	659.93	662.31	663.14
<b>01/24/18</b>	659.44	661.56	659.07	659.78	660.15	663.43
<b>08/20/18</b>	659.90	662.28	662.53	659.85	662.28	654.77
<b>11/14/18</b>	660.30	662.41	662.40	659.84	662.39	657.12
<b>05/06/19</b>	660.81	662.67	662.82	660.51	662.70	657.53
<b>07/30/19</b>	659.97	662.37	662.47	659.61	662.36	655.79
<b>10/23/2019</b>	660.79	662.15	661.55	657.94	662.26	655.92
<b>1/14/2020</b>	660.23	662.01	661.77	660.57	661.97	657.43

Note: Elevations are presented in feet mean sea level (msl).

**A.7 Other**  
**Groundwater NA Indicator Results**  
**Mr. P's Tires, Former BRRTS #02-41-563586**

**Well MW-1**

Date	Dissolved Oxygen (ppm)	pH	ORP	Temp ( C )	Specific Conductance	Nitrate + Nitrite (ppm)	Total Sulfate (ppm)	Dissolved Iron (ppm)	Manganese (ppb)
10/30/17	0.22	7.52	233	17.1	1938	<0.17	35.0	0.07	<b>3610</b>
01/24/18	1.19	6.82	-155	8.4	1782	NS	NS	NS	NS
08/20/18	2.63	7.05	40.5	21.47	1532	NS	NS	NS	NS
11/14/18	2.90	8.04	-26.3	14.66	1662	NS	NS	NS	NS
05/06/19	8.08	6.15	-52.9	9.90	1759	NS	NS	NS	NS
07/30/19	2.41	7.85	-224.2	20.19	1636	NS	NS	NS	NS
10/23/19	2.93	6.67	-206.1	18.00	1672	NS	NS	NS	NS
01/14/20	1.68	6.81	-90.2	8.95	1793	NS	NS	NS	NS
<b>ENFORCEMENT STANDARD = ES - Bold</b>						<b>10</b>	-	-	<b>300</b>
<b>PREVENTIVE ACTION LIMIT = PAL - Italics</b>						<i>2</i>	-	-	<i>60</i>

(ppb) = parts per billion (ppm) = parts per million  
 NS = Not Sampled NM = Not Measured ORP = Oxidation Reduction Potential  
 Note: Elevations are presented in feet mean sea level (msl).

**Well MW-2**

Date	Dissolved Oxygen (ppm)	pH	ORP	Temp ( C )	Specific Conductance	Nitrate + Nitrite (ppm)	Total Sulfate (ppm)	Dissolved Iron (ppm)	Manganese (ppb)
10/30/17	0.31	7.99	236	17.4	554	<0.17	9.84	0.24	<b>1800</b>
01/24/18	0.96	6.95	-61	7.4	6405	NS	NS	NS	NS
08/20/18	2.46	7.03	35.8	21.94	8272	NS	NS	NS	NS
11/14/18	3.07	7.63	-21.1	11.28	6434	NS	NS	NS	NS
05/06/19	7.33	6.88	-112.2	9.44	8204	NS	NS	NS	NS
07/30/19	2.38	8.68	-232.0	23.09	7348	NS	NS	NS	NS
10/23/19	2.41	6.85	-193	16.46	6633	NS	NS	NS	NS
01/14/20	2.40	7.06	-84.5	6.34	5748	NS	NS	NS	NS
<b>ENFORCEMENT STANDARD = ES - Bold</b>						<b>10</b>	-	-	<b>300</b>
<b>PREVENTIVE ACTION LIMIT = PAL - Italics</b>						<i>2</i>	-	-	<i>60</i>

(ppb) = parts per billion (ppm) = parts per million  
 NS = Not Sampled NM = Not Measured ORP = Oxidation Reduction Potential  
 Note: Elevations are presented in feet mean sea level (msl).

**Well MW-3**

Date	Dissolved Oxygen (ppm)	pH	ORP	Temp ( C )	Specific Conductance	Nitrate + Nitrite (ppm)	Total Sulfate (ppm)	Dissolved Iron (ppm)	Manganese (ppb)
10/30/17	3.46	9.04	247	15.6	1248	0.37	169	0.03	<b>2490</b>
01/24/18	1.74	7.35	160	9.5	1402	NS	NS	NS	NS
08/20/18	2.51	7.05	38.4	22.86	1491	NS	NS	NS	NS
11/14/18	3.01	7.58	-23.7	14.08	1571	NS	NS	NS	NS
05/06/19	NOT SAMPLED								
07/30/19	NOT SAMPLED								
10/23/19	NOT SAMPLED								
01/14/20	NOT SAMPLED								
<b>ENFORCEMENT STANDARD = ES - Bold</b>						<b>10</b>	-	-	<b>300</b>
<b>PREVENTIVE ACTION LIMIT = PAL - Italics</b>						<i>2</i>	-	-	<i>60</i>

(ppb) = parts per billion (ppm) = parts per million  
 NS = Not Sampled NM = Not Measured ORP = Oxidation Reduction Potential  
 Note: Elevations are presented in feet mean sea level (msl).

**A.7 Other**  
**Groundwater NA Indicator Results**  
**Mr. P's Tires, Former BRRTS #02-41-563586**

**Well MW-4**

Date	Dissolved Oxygen (ppm)	pH	ORP	Temp ( C)	Specific Conductance	Nitrate + Nitrite (ppm)	Total Sulfate (ppm)	Dissolved Iron (ppm)	Manganese (ppb)
10/30/17	1.00	7.93	253	18.3	1103	<0.17	32.7	<0.03	1100
01/24/18	1.41	7.25	42.4	8.43	974	NS	NS	NS	NS
08/20/18	2.55	7.17	33.8	20.98	1077	NS	NS	NS	NS
11/14/18	3.01	7.94	-21.3	14.00	1136	NS	NS	NS	NS
05/06/19	NOT SAMPLED								
07/30/19	NOT SAMPLED								
10/23/19	NOT SAMPLED								
01/14/20	NOT SAMPLED								
<b>ENFORCEMENT STANDARD = ES – Bold</b>						<b>10</b>	-	-	<b>300</b>
<b>PREVENTIVE ACTION LIMIT = PAL - Italics</b>						<b>2</b>	-	-	<b>60</b>

(ppb) = parts per billion (ppm) = parts per million  
 NS = Not Sampled NM = Not Measured ORP = Oxidation Reduction Potential  
 Note: Elevations are presented in feet mean sea level (msl).

**Well MW-5**

Date	Dissolved Oxygen (ppm)	pH	ORP	Temp ( C)	Specific Conductance	Nitrate + Nitrite (ppm)	Total Sulfate (ppm)	Dissolved Iron (ppm)	Manganese (ppb)
10/30/17	0.31	8.21	225	16.2	2065	<0.17	9.38	<0.03	685
01/24/18	1.53	7.16	-28	7.6	2643	NS	NS	NS	NS
08/20/18	2.44	7.11	39.2	22.40	4310	NS	NS	NS	NS
11/14/18	3.00	8.06	-25.0	13.42	2992	NS	NS	NS	NS
05/06/19	7.57	7.28	-80.6	10.53	2854	NS	NS	NS	NS
07/30/19	2.27	8.43	-179.5	23.16	2310	NS	NS	NS	NS
10/23/19	2.61	7.00	-69.5	16.64	3933	NS	NS	NS	NS
01/14/20	2.44	7.05	-111.1	9.58	4801	NS	NS	NS	NS
<b>ENFORCEMENT STANDARD = ES – Bold</b>						<b>10</b>	-	-	<b>300</b>
<b>PREVENTIVE ACTION LIMIT = PAL - Italics</b>						<b>2</b>	-	-	<b>60</b>

(ppb) = parts per billion (ppm) = parts per million  
 NS = Not Sampled NM = Not Measured ORP = Oxidation Reduction Potential  
 Note: Elevations are presented in feet mean sea level (msl).

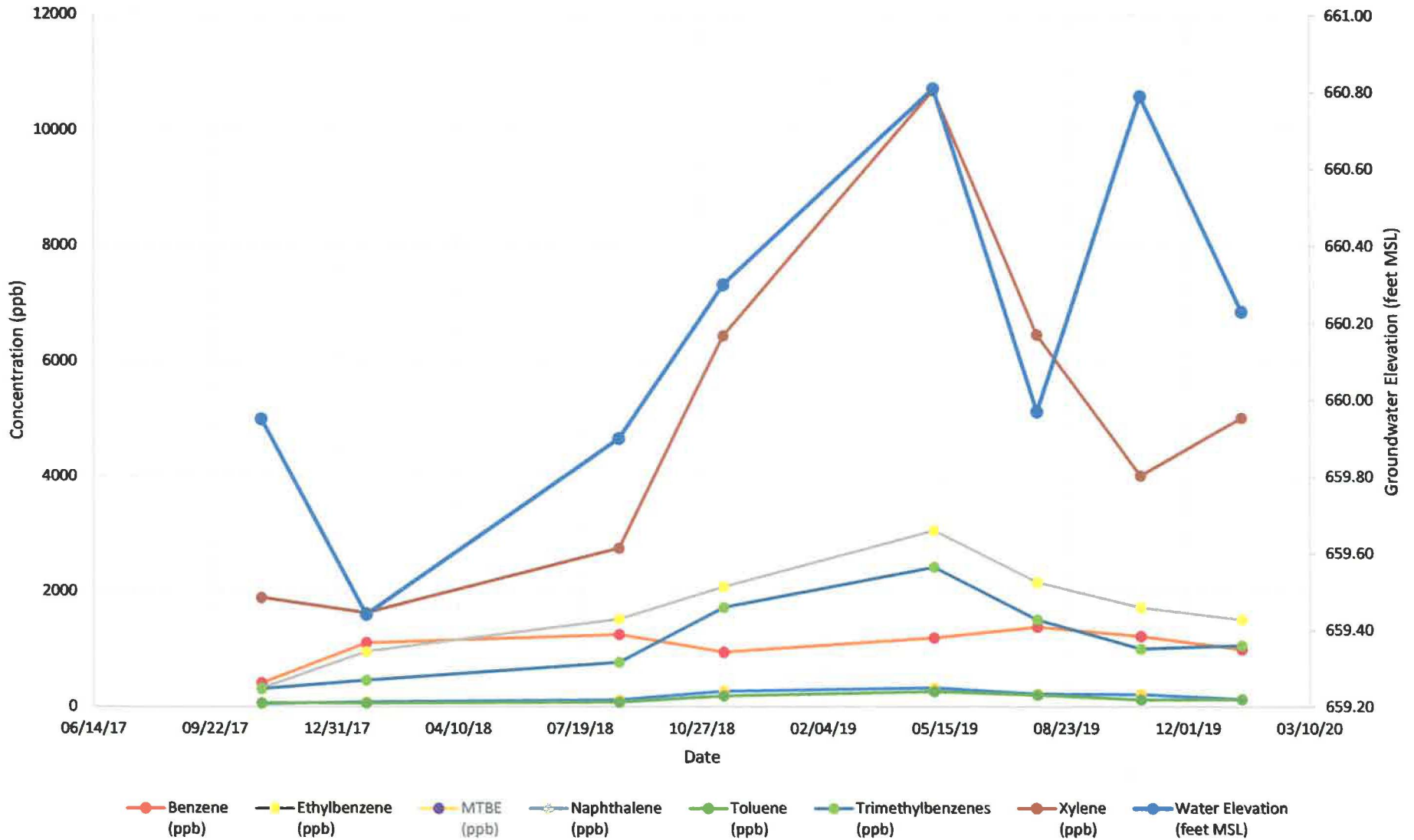
**Well MW-6**

Date	Dissolved Oxygen (ppm)	pH	ORP	Temp ( C)	Specific Conductance	Nitrate + Nitrite (ppm)	Total Sulfate (ppm)	Dissolved Iron (ppm)	Manganese (ppb)
10/30/17	12.30	9.00	243	12.0	280	0.19	27.0	<0.03	11.8
01/24/18	15.49	8.41	362	2.2	285	NS	NS	NS	NS
08/20/18	3.10	6.87	42.7	15.43	732	NS	NS	NS	NS
11/14/18	3.05	7.24	-14.3	12.73	507	NS	NS	NS	NS
05/06/19	9.44	6.62	-40.1	10.71	537	NS	NS	NS	NS
07/30/19	2.59	8.53	-118.9	16.71	817	NS	NS	NS	NS
10/23/19	2.49	7.25	318.2	16.81	622	NS	NS	NS	NS
01/14/20	5.14	7.33	127.2	10.32	873	NS	NS	NS	NS
<b>ENFORCEMENT STANDARD = ES – Bold</b>						<b>10</b>	-	-	<b>300</b>
<b>PREVENTIVE ACTION LIMIT = PAL - Italics</b>						<b>2</b>	-	-	<b>60</b>

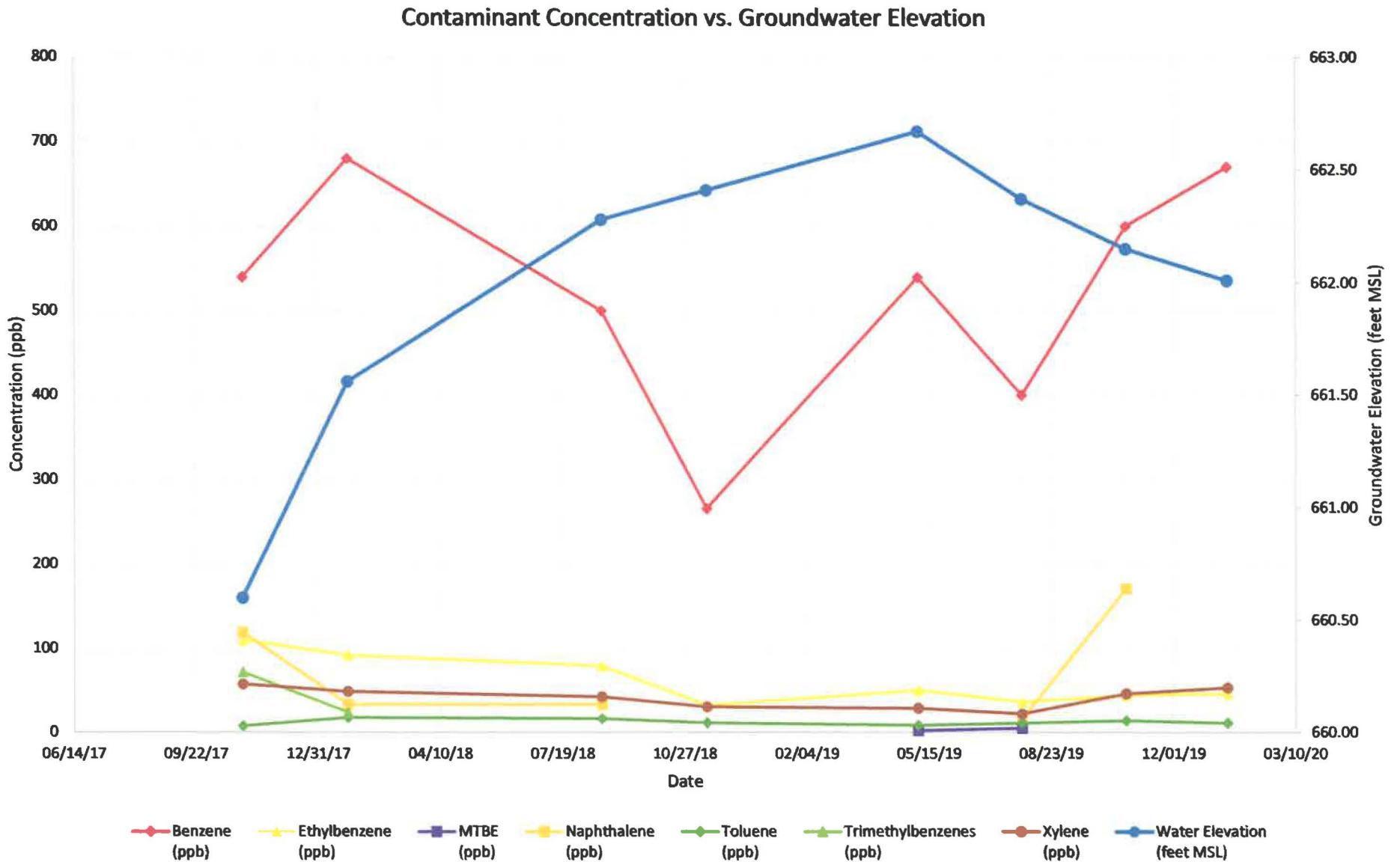
(ppb) = parts per billion (ppm) = parts per million  
 NS = Not Sampled NM = Not Measured ORP = Oxidation Reduction Potential  
 Note: Elevations are presented in feet mean sea level (msl).

A.7 Other  
 Contaminant Concentration vs. Groundwater Elevation  
 Mr. P's Tires, Former BRRS #02-41-563586  
 Monitoring Well MW-1

Contaminant Concentration vs. Groundwater Elevation

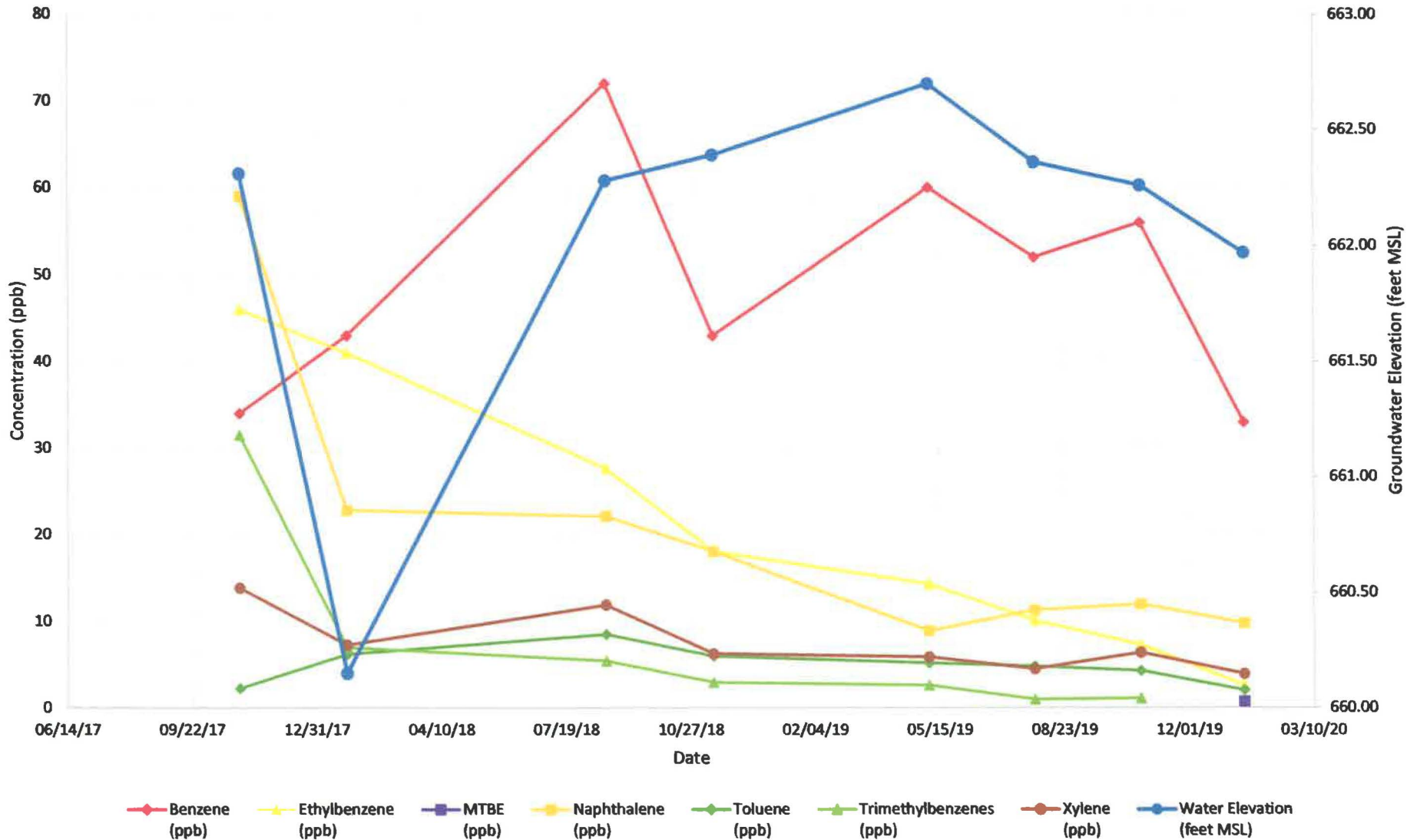


A.7 Other  
 Contaminant Concentration vs. Groundwater Elevation  
 Mr. P's Tires, Former BRRTS #02-41-563586  
 Monitoring Well MW-2



A.7 Other  
 Contaminant Concentration vs. Groundwater Elevation  
 Mr. P's Tires, Former BRRS #02-41-563586  
 Monitoring Well MW-5

Contaminant Concentration vs. Groundwater Elevation



# Synergy Environmental Lab,

1990 Prospect Ct., Appleton, WI 54914 \*P 920-830-2455 \* F 920-733-0631

MARK PACHEFSKY  
MARK PACHEFSKY  
4475 CLUB DRIVE  
SLINGER, WI 53086

Report Date 29-Oct-19

Project Name MR. P'S TIRE  
Project #

Invoice # E37007

Lab Code 5037007A  
Sample ID MW-6  
Sample Matrix Water  
Sample Date 10/23/2019

	Result	Unit	LOD	LOQ	Dil	Method	Ext Date	Run Date	Analyst	Code
Organic										
PVOC + Naphthalene										
Benzene	< 0.32	ug/l	0.32	1.02	1	GRO95/8021		10/28/2019	CJR	1
Ethylbenzene	< 0.29	ug/l	0.29	0.94	1	GRO95/8021		10/28/2019	CJR	1
Methyl tert-butyl ether (MTBE)	< 0.24	ug/l	0.24	0.78	1	GRO95/8021		10/28/2019	CJR	1
Naphthalene	< 1.3	ug/l	1.3	4.1	1	GRO95/8021		10/28/2019	CJR	1
Toluene	< 0.29	ug/l	0.29	0.93	1	GRO95/8021		10/28/2019	CJR	1
1,2,4-Trimethylbenzene	< 0.46	ug/l	0.46	1.46	1	GRO95/8021		10/28/2019	CJR	1
1,3,5-Trimethylbenzene	< 0.67	ug/l	0.67	2.15	1	GRO95/8021		10/28/2019	CJR	1
m&p-Xylene	< 0.52	ug/l	0.52	1.67	1	GRO95/8021		10/28/2019	CJR	1
o-Xylene	< 0.7	ug/l	0.7	2.24	1	GRO95/8021		10/28/2019	CJR	1

## Project #

Lab Code 5037007B  
 Sample ID MW-5  
 Sample Matrix Water  
 Sample Date 10/23/2019

	Result	Unit	LOD	LOQ	Dil	Method	Ext Date	Run Date	Analyst	Code
Organic										
PVOC + Naphthalene										
Benzene	56	ug/l	0.32	1.02	1	GRO95/8021		10/28/2019	CJR	1
Ethylbenzene	7.3	ug/l	0.29	0.94	1	GRO95/8021		10/28/2019	CJR	1
Methyl tert-butyl ether (MTBE)	< 0.24	ug/l	0.24	0.78	1	GRO95/8021		10/28/2019	CJR	1
Naphthalene	12	ug/l	1.3	4.1	1	GRO95/8021		10/28/2019	CJR	1
Toluene	4.3	ug/l	0.29	0.93	1	GRO95/8021		10/28/2019	CJR	1
1,2,4-Trimethylbenzene	1.09 "J"	ug/l	0.46	1.46	1	GRO95/8021		10/28/2019	CJR	1
1,3,5-Trimethylbenzene	< 0.67	ug/l	0.67	2.15	1	GRO95/8021		10/28/2019	CJR	1
m&p-Xylene	4.9	ug/l	0.52	1.67	1	GRO95/8021		10/28/2019	CJR	1
o-Xylene	1.49 "J"	ug/l	0.7	2.24	1	GRO95/8021		10/28/2019	CJR	1

Lab Code 5037007C  
 Sample ID MW-2  
 Sample Matrix Water  
 Sample Date 10/23/2019

	Result	Unit	LOD	LOQ	Dil	Method	Ext Date	Run Date	Analyst	Code
Organic										
PVOC + Naphthalene										
Benzene	600	ug/l	3.2	10.2	10	GRO95/8021		10/28/2019	CJR	1
Ethylbenzene	44	ug/l	2.9	9.4	10	GRO95/8021		10/28/2019	CJR	1
Methyl tert-butyl ether (MTBE)	< 2.4	ug/l	2.4	7.8	10	GRO95/8021		10/28/2019	CJR	1
Naphthalene	171	ug/l	13	41	10	GRO95/8021		10/28/2019	CJR	1
Toluene	13.7	ug/l	2.9	9.3	10	GRO95/8021		10/28/2019	CJR	1
1,2,4-Trimethylbenzene	< 4.6	ug/l	4.6	14.6	10	GRO95/8021		10/28/2019	CJR	1
1,3,5-Trimethylbenzene	< 6.7	ug/l	6.7	21.5	10	GRO95/8021		10/28/2019	CJR	1
m&p-Xylene	46	ug/l	5.2	16.7	10	GRO95/8021		10/28/2019	CJR	1
o-Xylene	< 7	ug/l	7	22.4	10	GRO95/8021		10/28/2019	CJR	1

Lab Code 5037007D  
 Sample ID MW-1  
 Sample Matrix Water  
 Sample Date 10/23/2019

	Result	Unit	LOD	LOQ	Dil	Method	Ext Date	Run Date	Analyst	Code
Organic										
PVOC + Naphthalene										
Benzene	1230	ug/l	16	51	50	GRO95/8021		10/29/2019	CJR	1
Ethylbenzene	1730	ug/l	14.5	47	50	GRO95/8021		10/29/2019	CJR	1
Methyl tert-butyl ether (MTBE)	< 12	ug/l	12	39	50	GRO95/8021		10/29/2019	CJR	1
Naphthalene	219	ug/l	65	205	50	GRO95/8021		10/29/2019	CJR	1
Toluene	124	ug/l	14.5	46.5	50	GRO95/8021		10/29/2019	CJR	1
1,2,4-Trimethylbenzene	920	ug/l	23	73	50	GRO95/8021		10/29/2019	CJR	1
1,3,5-Trimethylbenzene	90 "J"	ug/l	33.5	107.5	50	GRO95/8021		10/29/2019	CJR	1
m&p-Xylene	3200	ug/l	26	83.5	50	GRO95/8021		10/29/2019	CJR	1
o-Xylene	820	ug/l	35	112	50	GRO95/8021		10/29/2019	CJR	1



Project Name MR. P'S TIRE  
Project #

Invoice # E37007

Lab Code 5037007E  
Sample ID TRIP BLANK  
Sample Matrix Water  
Sample Date 10/23/2019

	Result	Unit	LOD	LOQ	Dil	Method	Ext Date	Run Date	Analyst	Code
Organic										
PVOC + Naphthalene										
Benzene	< 0.32	ug/l	0.32	1.02	1	GRO95/8021		10/28/2019	CJR	1
Ethylbenzene	< 0.29	ug/l	0.29	0.94	1	GRO95/8021		10/28/2019	CJR	1
Methyl tert-butyl ether (MTBE)	< 0.24	ug/l	0.24	0.78	1	GRO95/8021		10/28/2019	CJR	1
Naphthalene	< 1.3	ug/l	1.3	4.1	1	GRO95/8021		10/28/2019	CJR	1
Toluene	< 0.29	ug/l	0.29	0.93	1	GRO95/8021		10/28/2019	CJR	1
1,2,4-Trimethylbenzene	< 0.46	ug/l	0.46	1.46	1	GRO95/8021		10/28/2019	CJR	1
1,3,5-Trimethylbenzene	< 0.67	ug/l	0.67	2.15	1	GRO95/8021		10/28/2019	CJR	1
m&p-Xylene	< 0.52	ug/l	0.52	1.67	1	GRO95/8021		10/28/2019	CJR	1
o-Xylene	< 0.7	ug/l	0.7	2.24	1	GRO95/8021		10/28/2019	CJR	1

"J" Flag: Analyte detected between LOD and LOQ

LOD Limit of Detection

LOQ Limit of Quantitation

Code	Comment
1	Laboratory QC within limits.

All solid sample results reported on a dry weight basis unless otherwise indicated. All LOD's and LOQ's are adjusted for dilutions but not dry weight. Subcontracted results are denoted by SUB in the analyst field.

Authorized Signature

*Michael Ricker*

CHAIN OF STUDY RECORD

# Synergy

## Environmental Lab, Inc.

Chain # No 41469

Page 1 of 1

Lab I.D. #  
 QUOTE # :  
 Project #:  
 Sampler: (signature) *Ben Nelson*

www.synergy-lab.net  
 1990 Prospect Ct. • Appleton, WI 54914  
 920-830-2455 • mrsynergy@wi.twcba.com

**Sample Handling Request**

Rush Analysis Date Required: \_\_\_\_\_  
 (Rushes accepted only with prior authorization)  
 Normal Turn Around

Project (Name / Location): <i>Mr. P's Tire / Milwaukee, WI</i>						Analysis Requested							Other Analysis								
Reports To: <i>Mark Pachefsky</i>			Invoice To: <i>Mark Pachefsky</i>			DRO (Mod DRO Sep 95)	GRO (Mod GRO Sep 95)	LEAD	NITRATE/NITRITE	OIL & GREASE	PAH (EPA 8270)	PCB	PVOC (EPA 8021)	PVOC + NAPHTHALENE	SULFATE	TOTAL SUSPENDED SOLIDS	VOC DW (EPA 524.2)	VOC (EPA 8260)	VOC AIR (TO - 15)	B-RORA METALS	PID/ FID
Company			Company <i>UP METCO</i>																		
Address <i>4475 Club Dr.</i>			Address <i>709 Gillette St. Ste. #3</i>																		
City State Zip <i>Slinger, WI 53086</i>			City State Zip <i>La Crosse, WI 54603</i>																		
Phone <i>414-336-6053</i>			Phone <i>608-781-8879</i>																		
Email			Email																		

Lab I.D.	Sample I.D.	Collection Date	Collection Time	Filtered Y/N	No. of Containers	Sample Type (Matrix)	Preservation
<i>5037007 A</i>	<i>MW-6</i>	<i>10/23/19</i>	<i>9:45</i>	<i>N</i>	<i>3</i>	<i>GW</i>	<i>HCl</i>
<i>B</i>	<i>MW-5</i>	<i>↓</i>	<i>10:20</i>	<i>↓</i>	<i>↓</i>	<i>↓</i>	<i>↓</i>
<i>C</i>	<i>MW-3</i>	<i>↓</i>	<i>10:37</i>	<i>↓</i>	<i>↓</i>	<i>↓</i>	<i>↓</i>
<i>D</i>	<i>MW-1</i>	<i>↓</i>	<i>10:57</i>	<i>↓</i>	<i>↓</i>	<i>↓</i>	<i>↓</i>
<i>2</i>	<i>Trip Blank</i>	<i>↓</i>	<i>↓</i>	<i>↓</i>	<i>1</i>	<i>↓</i>	<i>↓</i>

Comments/Special Instructions (\*Specify groundwater "GW", Drinking Water "DW", Waste Water "WW", Soil "S", Air "A", Oil, Sludge, etc.)

*Lab to send copy of Report to METCO / Jason P. (Invoice to METCO)*

- Agent Status*
- UIC Rates Apply*

Sample Integrity - To be completed by receiving lab. Method of Shipment: <i>bx</i> Temp. of Temp. Blank: _____ °C On Ice: <input checked="" type="checkbox"/> Cooler seal intact upon receipt: <input checked="" type="checkbox"/> Yes ___ No	Relinquished By: (sign) <i>Ben Nelson</i>	Time <i>3:00</i>	Date <i>10/23/19</i>	Received By: (sign)	Time	Date
	Received in Laboratory By: <i>Christina Rein</i>	Time: <i>8:00</i>	Date: <i>10/24/19</i>			

# Synergy Environmental Lab,

1990 Prospect Ct., Appleton, WI 54914 \*P 920-830-2455 \* F 920-733-0631

MARK PACHEFSKY  
MARK PACHEFSKY  
4475 CLUB DRIVE  
SLINGER, WI 53086

Report Date 20-Jan-20

Project Name MR P'S TIRE  
Project #

Invoice # E37383

Lab Code 5037383A  
Sample ID MW-6  
Sample Matrix Water  
Sample Date 1/14/2020

	Result	Unit	LOD	LOQ	Dil	Method	Ext Date	Run Date	Analyst	Code
Organic										
PVOC + Naphthalene										
Benzene	< 0.22	ug/l	0.22	0.71	1	8260B		1/18/2020	CJR	1
Ethylbenzene	< 0.26	ug/l	0.26	0.83	1	8260B		1/18/2020	CJR	1
Methyl tert-butyl ether (MTBE)	< 0.28	ug/l	0.28	0.89	1	8260B		1/18/2020	CJR	1
Naphthalene	< 2.1	ug/l	2.1	6.65	1	8260B		1/18/2020	CJR	1
Toluene	< 0.19	ug/l	0.19	0.6	1	8260B		1/18/2020	CJR	1
1,2,4-Trimethylbenzene	< 0.8	ug/l	0.8	2.55	1	8260B		1/18/2020	CJR	1
1,3,5-Trimethylbenzene	< 0.63	ug/l	0.63	2	1	8260B		1/18/2020	CJR	1
m&p-Xylene	< 0.43	ug/l	0.43	1.38	1	8260B		1/18/2020	CJR	1
o-Xylene	< 0.29	ug/l	0.29	0.93	1	8260B		1/18/2020	CJR	1

## Project #

Lab Code 5037383B

Sample ID MW-5

Sample Matrix Water

Sample Date 1/14/2020

	Result	Unit	LOD	LOQ	Dil	Method	Ext Date	Run Date	Analyst	Code
Organic										
PVOC + Naphthalene										
Benzene	33	ug/l	0.22	0.71	1	8260B		1/18/2020	CJR	1
Ethylbenzene	2.61	ug/l	0.26	0.83	1	8260B		1/18/2020	CJR	1
Methyl tert-butyl ether (MTBE)	0.72 "J"	ug/l	0.28	0.89	1	8260B		1/18/2020	CJR	1
Naphthalene	9.8	ug/l	2.1	6.65	1	8260B		1/18/2020	CJR	1
Toluene	2.05	ug/l	0.19	0.6	1	8260B		1/18/2020	CJR	1
1,2,4-Trimethylbenzene	< 0.8	ug/l	0.8	2.55	1	8260B		1/18/2020	CJR	1
1,3,5-Trimethylbenzene	< 0.63	ug/l	0.63	2	1	8260B		1/18/2020	CJR	1
m&p-Xylene	3.5	ug/l	0.43	1.38	1	8260B		1/18/2020	CJR	1
o-Xylene	0.42 "J"	ug/l	0.29	0.93	1	8260B		1/18/2020	CJR	1

Lab Code 5037383C

Sample ID MW-2

Sample Matrix Water

Sample Date 1/14/2020

	Result	Unit	LOD	LOQ	Dil	Method	Ext Date	Run Date	Analyst	Code
Organic										
PVOC + Naphthalene										
Benzene	670	ug/l	2.2	7.1	10	8260B		1/18/2020	CJR	1
Ethylbenzene	46	ug/l	2.6	8.3	10	8260B		1/18/2020	CJR	1
Methyl tert-butyl ether (MTBE)	< 2.8	ug/l	2.8	8.9	10	8260B		1/18/2020	CJR	1
Naphthalene	< 21	ug/l	21	66.5	10	8260B		1/18/2020	CJR	1
Toluene	11	ug/l	1.9	6	10	8260B		1/18/2020	CJR	1
1,2,4-Trimethylbenzene	< 8	ug/l	8	25.5	10	8260B		1/18/2020	CJR	1
1,3,5-Trimethylbenzene	< 6.3	ug/l	6.3	20	10	8260B		1/18/2020	CJR	1
m&p-Xylene	50	ug/l	4.3	13.8	10	8260B		1/18/2020	CJR	1
o-Xylene	2.9 "J"	ug/l	2.9	9.3	10	8260B		1/18/2020	CJR	1

Lab Code 5037383D

Sample ID MW-1

Sample Matrix Water

Sample Date 1/14/2020

	Result	Unit	LOD	LOQ	Dil	Method	Ext Date	Run Date	Analyst	Code
Organic										
PVOC + Naphthalene										
Benzene	1000	ug/l	11	35.5	50	8260B		1/18/2020	CJR	1
Ethylbenzene	1520	ug/l	13	41.5	50	8260B		1/18/2020	CJR	1
Methyl tert-butyl ether (MTBE)	< 14	ug/l	14	44.5	50	8260B		1/18/2020	CJR	1
Naphthalene	133 "J"	ug/l	105	332.5	50	8260B		1/18/2020	CJR	1
Toluene	130	ug/l	9.5	30	50	8260B		1/18/2020	CJR	1
1,2,4-Trimethylbenzene	960	ug/l	40	127.5	50	8260B		1/18/2020	CJR	1
1,3,5-Trimethylbenzene	108	ug/l	31.5	100	50	8260B		1/18/2020	CJR	1
m&p-Xylene	3400	ug/l	21.5	69	50	8260B		1/18/2020	CJR	1
o-Xylene	1620	ug/l	14.5	46.5	50	8260B		1/18/2020	CJR	1

Project Name MR P'S TIRE

Invoice # E37383

Project #

Lab Code 5037383E

Sample ID TRIP BLK

Sample Matrix Water

Sample Date 1/14/2020

	Result	Unit	LOD	LOQ	Dil	Method	Ext Date	Run Date	Analyst	Code
Organic										
PVOC + Naphthalene										
Benzene	< 0.22	ug/l	0.22	0.71	1	8260B		1/18/2020	CJR	1
Ethylbenzene	< 0.26	ug/l	0.26	0.83	1	8260B		1/18/2020	CJR	1
Methyl tert-butyl ether (MTBE)	< 0.28	ug/l	0.28	0.89	1	8260B		1/18/2020	CJR	1
Naphthalene	< 2.1	ug/l	2.1	6.65	1	8260B		1/18/2020	CJR	1
Toluene	< 0.19	ug/l	0.19	0.6	1	8260B		1/18/2020	CJR	1
1,2,4-Trimethylbenzene	< 0.8	ug/l	0.8	2.55	1	8260B		1/18/2020	CJR	1
1,3,5-Trimethylbenzene	< 0.63	ug/l	0.63	2	1	8260B		1/18/2020	CJR	1
m&p-Xylene	< 0.43	ug/l	0.43	1.38	1	8260B		1/18/2020	CJR	1
o-Xylene	< 0.29	ug/l	0.29	0.93	1	8260B		1/18/2020	CJR	1

"J" Flag: Analyte detected between LOD and LOQ

LOD Limit of Detection

LOQ Limit of Quantitation

Code	Comment
1	Laboratory QC within limits.

All solid sample results reported on a dry weight basis unless otherwise indicated. All LOD's and LOQ's are adjusted for dilutions but not dry weight. Subcontracted results are denoted by SUB in the analyst field.

Authorized Signature

*Michael Ricker*

## Environmental Lab, Inc.

1990 Prospect Ct. • Appleton, WI 54914  
920-830-2455 • FAX 920-733-0631

**Sample Handling Request**

Rush Analysis Date Required \_\_\_\_\_  
(Rushes accepted only with prior authorization)

Normal Turn Around

Lab I.D. # \_\_\_\_\_  
Account No.: \_\_\_\_\_ Quote No.: \_\_\_\_\_  
Project #: \_\_\_\_\_  
Sampler: (signature) *Begin Now*

Project (Name / Location): *Mr. P's Tire / Milwaukee, WI*

Reports To: <i>Mark Pachefsky</i>	Invoice To: <i>Mark Pachefsky</i>
Company _____	Company <i>C/O METCO</i>
Address <i>4475 Club Dr.</i>	Address <i>709 Gillette St. Stk # 3</i>
City State Zip <i>Slinger, WI 53086</i>	City State Zip <i>La Crosse, WI 54603</i>
Phone <i>414-336-6053</i>	Phone <i>(608) 781-8879</i>
FAX _____	FAX _____

Analysis Requested										Other Analysis										
DRO (Mod DRO Sep 95)	GRO (Mod GRO Sep 95)	LEAD	NITRATE/NITRITE	OIL & GREASE	PAH (EPA 8270)	PCB	PVOC (EPA 8021)	PVOC + NAPHTHALENE	SULFATE	TOTAL SUSPENDED SOLIDS	VOC DW (EPA 524.2)	VOC (EPA 8260)	8-RCRA METALS						PID/ FID	

Lab I.D.	Sample I.D.	Collection Date	Time	Comp	Grab	Filtered Y/N	No. of Containers	Sample Type (Matrix)*	Preservation
<i>5037883A</i>	<i>MW-6</i>	<i>1/14/20</i>	<i>8:10</i>		<i>X</i>	<i>N</i>	<i>3</i>	<i>6W</i>	<i>HCl</i>
<i>B</i>	<i>MW-5</i>	<i>↓</i>	<i>8:40</i>		<i>↓</i>	<i>↓</i>	<i>↓</i>	<i>↓</i>	<i>↓</i>
<i>C</i>	<i>MW-2</i>	<i>↓</i>	<i>9:20</i>		<i>↓</i>	<i>↓</i>	<i>↓</i>	<i>↓</i>	<i>↓</i>
<i>D</i>	<i>MW-1</i>	<i>↓</i>	<i>9:45</i>		<i>↓</i>	<i>↓</i>	<i>↓</i>	<i>↓</i>	<i>↓</i>
<i>E</i>	<i>Trip Blank</i>					<i>↓</i>			<i>↓</i>

Comments/Special Instructions (\*Specify groundwater "GW", Drinking Water "DW", Waste Water "WW", Soil "S", Air "A", Oil, Sludge etc.)

*Lab to send copy of Report to METCO (Jason P. (Invoice to METCO))*

- Agent status*
- U+C Rates apply*

Sample Integrity - To be completed by receiving lab Method of Shipment: <i>GC</i> Temp. of Temp. Blank: _____ °C On Ice: <input checked="" type="checkbox"/> Cooler seal intact upon receipt: <input checked="" type="checkbox"/> Yes <input type="checkbox"/> No	Relinquished By: (sign) <i>Begin Now</i>	Time <i>12:00</i>	Date <i>1/15/20</i>	Received By: (sign) _____	Time _____	Date _____
	Received in Laboratory By: <i>[Signature]</i>				Time: <i>8:00</i>	Date: <i>1/16/20</i>