

LeRoy, Bruce J - DNR (BJ)

From: Renier, Joe M <joe.renier@woodplc.com>
Sent: Thursday, May 2, 2019 2:26 PM
To: LeRoy, Bruce J - DNR (BJ)
Subject: RE: Ashview Terrace Meeting Date - BRRTS # 02-05-564043
Attachments: _ashview terrace_zone diagrams.pdf; ashview terrace apartments_no boxes.pdf; Ashview Terrace Apartments Landscape.pdf

Categories: To do

Hi BJ,

The meeting was on 12/13/17. The attached figures were presented and discussed. Bob and Keld indicated that the plan looked very good and told us to proceed.

Let me know if you have further questions...

Thanks, Joe

Joseph M. Renier

Environment & Infrastructure Solutions
Senior Project Manager/ Hydrogeologist, E&IS
Direct: 320-963-5742
Note: Amec Foster Wheeler E&I is now part of Wood
www.woodplc.com



From: LeRoy, Bruce J - DNR (BJ) [mailto:bruce.leroy@wisconsin.gov]
Sent: Thursday, May 02, 2019 11:52 AM
To: Renier, Joe M <joe.renier@woodplc.com>
Subject: Ashview Terrace Meeting Date - BRRTS # 02-05-564043

Hi Joe,

Do you have in your calendar the meeting date when you met with Bob and Keld in winter/spring of 2018 about the cover plan? I've got someone searching for that, but if you could check on it, that's probably faster.

Also...do you have what you submitted to Bob at the time? I don't see anything in the file or online, so I'm just wondering what that packet looked like. I suspect you brought in a map set just you did when we met, but I don't see that in our paper file.

Finally; if you have any confirmation from Bob saying to move forward, that would be helpful. We put in a request to search his email, but again, it may be faster if you had it just to forward to me.

Thanks for the help.

BJ

We are committed to service excellence.

Visit our survey at <http://dnr.wi.gov/customersurvey> to evaluate how I did.

B.J. LeRoy, PG

Hydrogeologist – Northeast Region Remediation and Redevelopment

Wisconsin Department of Natural Resources

2984 Shawano Avenue, Green Bay WI 54313-6727

Phone: 920-662-5164

BJ.Leroy@wisconsin.gov



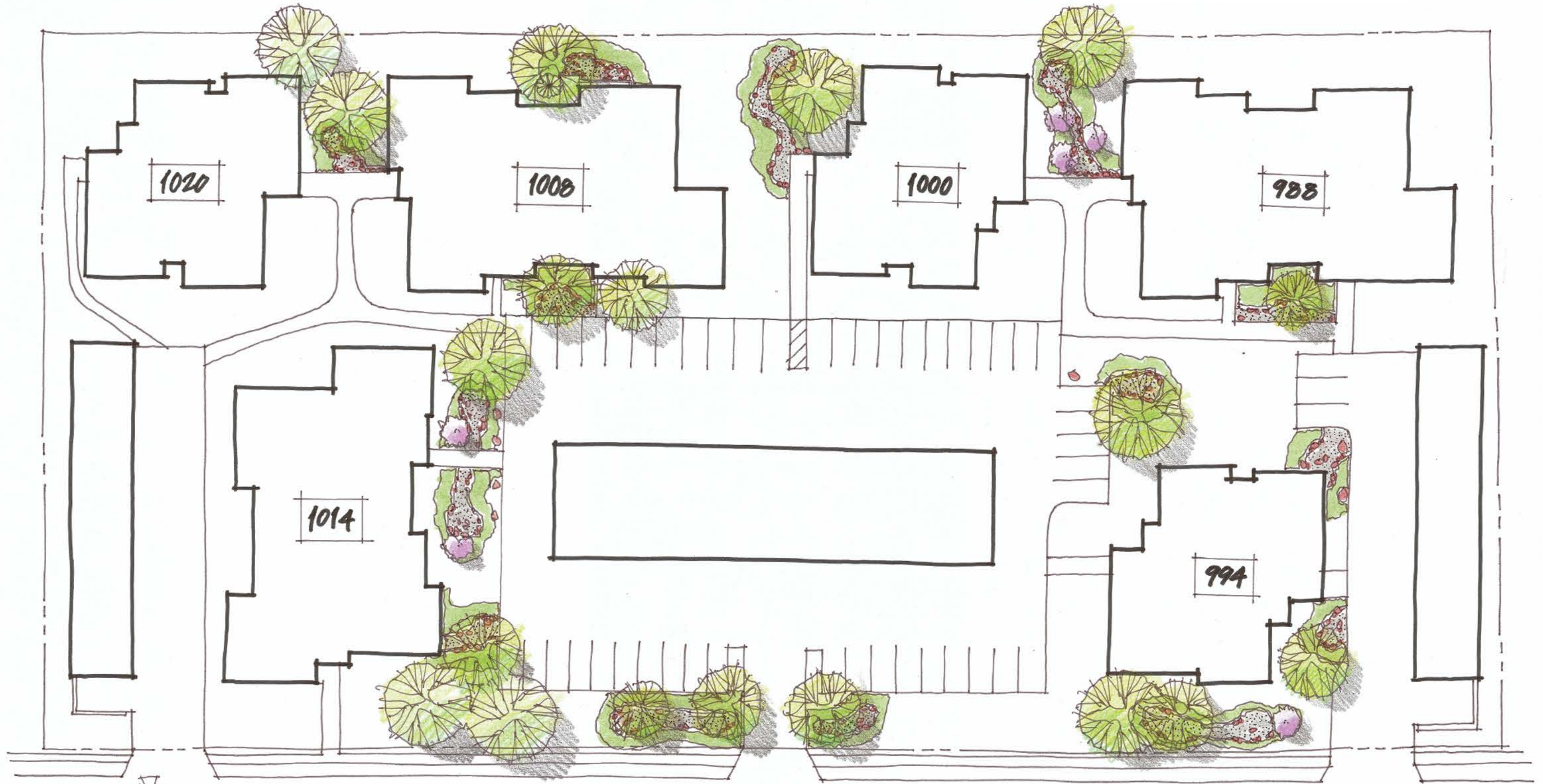
This message is the property of John Wood Group PLC and/or its subsidiaries and/or affiliates and is intended only for the named recipient(s). Its contents (including any attachments) may be confidential, legally privileged or otherwise protected from disclosure by law. Unauthorized use, copying, distribution or disclosure of any of it may be unlawful and is strictly prohibited. We assume no responsibility to persons other than the intended named recipient(s) and do not accept liability for any errors or omissions which are a result of email transmission. If you have received this message in error, please notify us immediately by reply email to the sender and confirm that the original message and any attachments and copies have been destroyed and deleted from your system.

If you do not wish to receive future unsolicited commercial electronic messages from us, please forward this email to: unsubscribe@woodplc.com and include "Unsubscribe" in the subject line. If applicable, you will continue to receive invoices, project communications and similar factual, non-commercial electronic communications.

Please click <http://www.woodplc.com/email-disclaimer> for notices and company information in relation to emails originating in the UK, Italy or France.

As a recipient of an email from a John Wood Group Plc company, your contact information will be on our systems and we may hold other personal data about you such as identification information, CVs, financial information and information contained in correspondence. For more information on our privacy practices and your data protection rights, please see our privacy notice at <https://www.woodplc.com/policies/privacy-notice>

Previous Submittal - verbal approval.

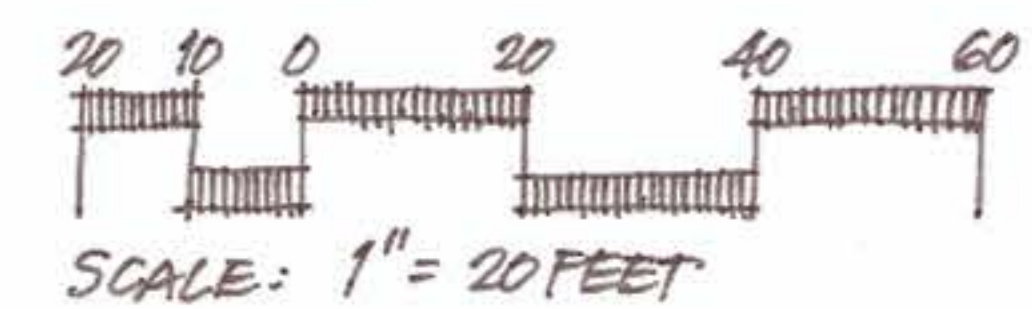


ASHVIEW TERRACE

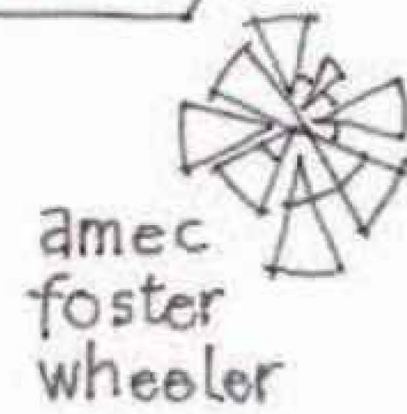
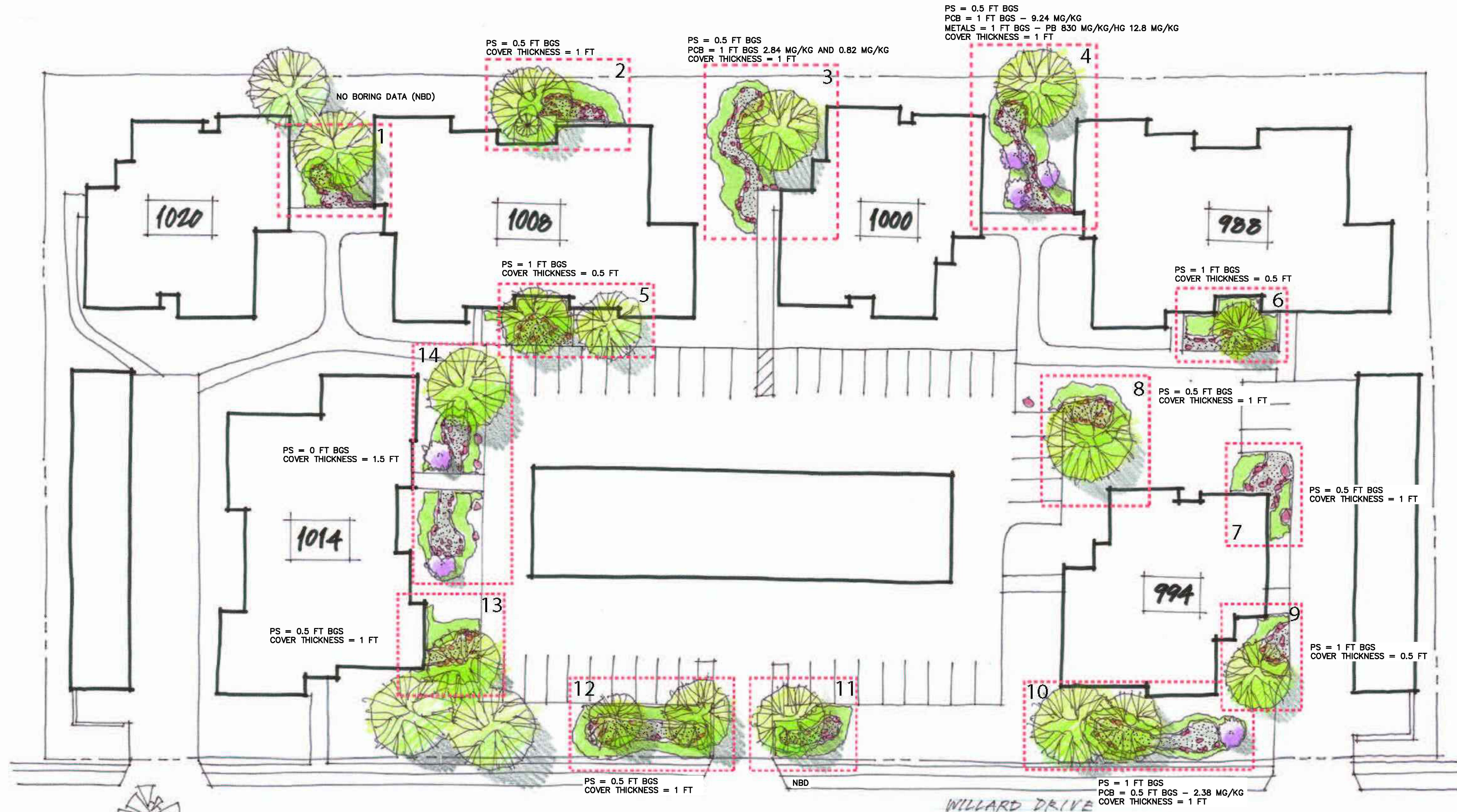
APARTMENTS

ASHWAUBENON, WISCONSIN

WILLARD DRIVE

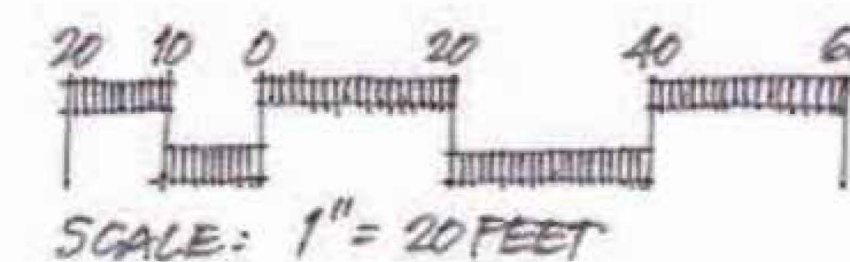


Previous Submittal - verbal approval.

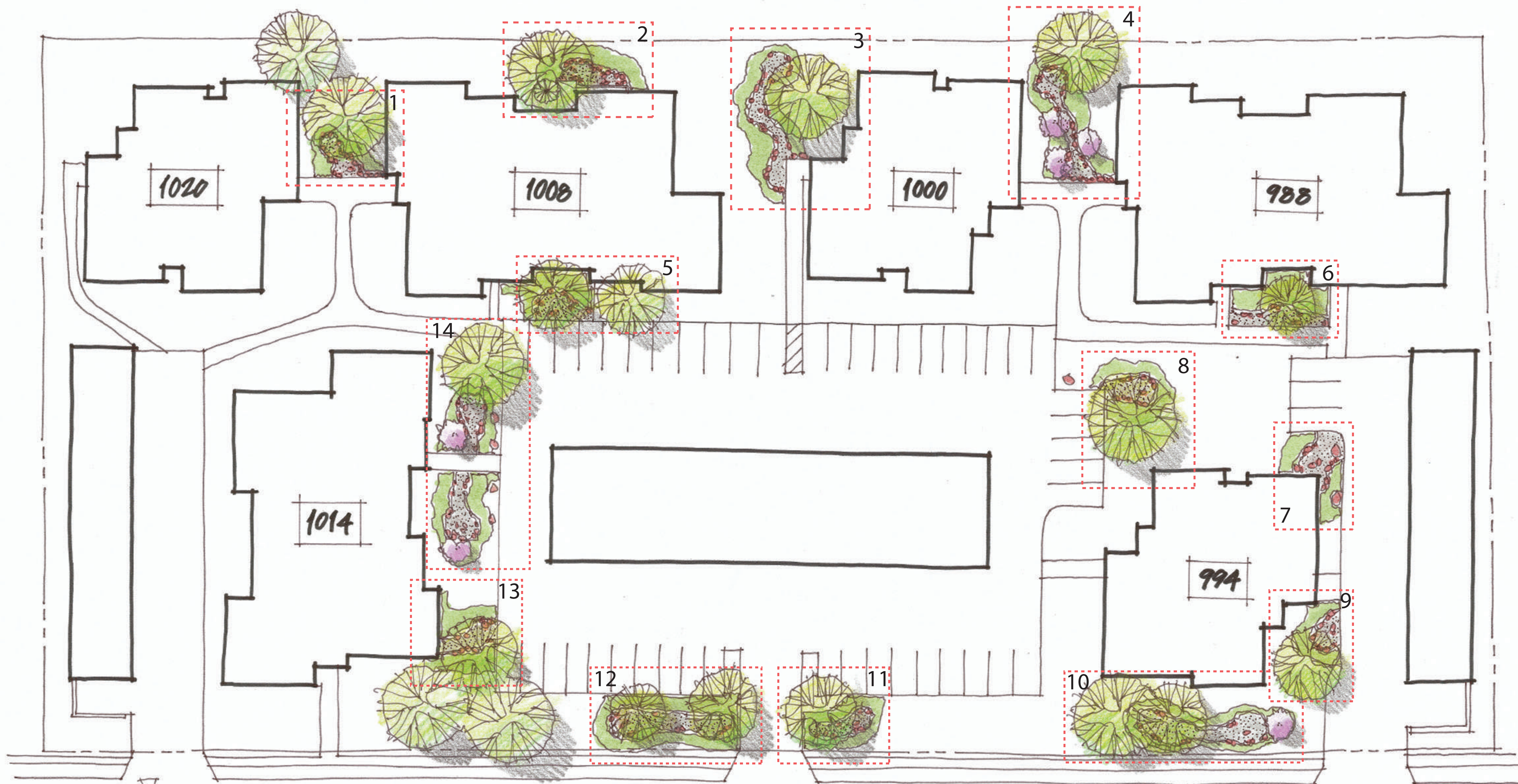


ASHVIEW TERRACE APARTMENTS

ASHWAUBENON, WISCONSIN



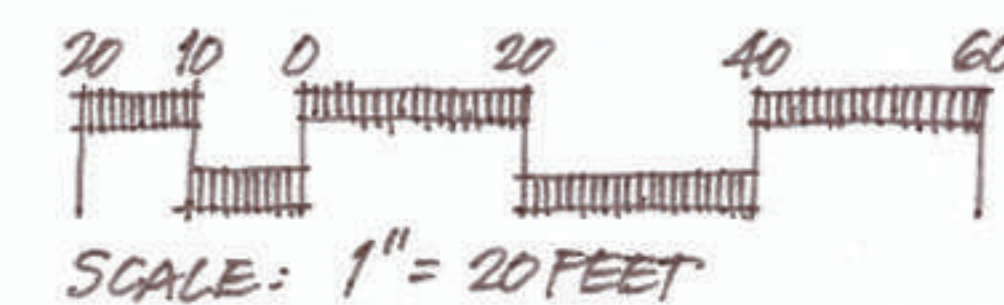
Previous Submittal - verbal approval.



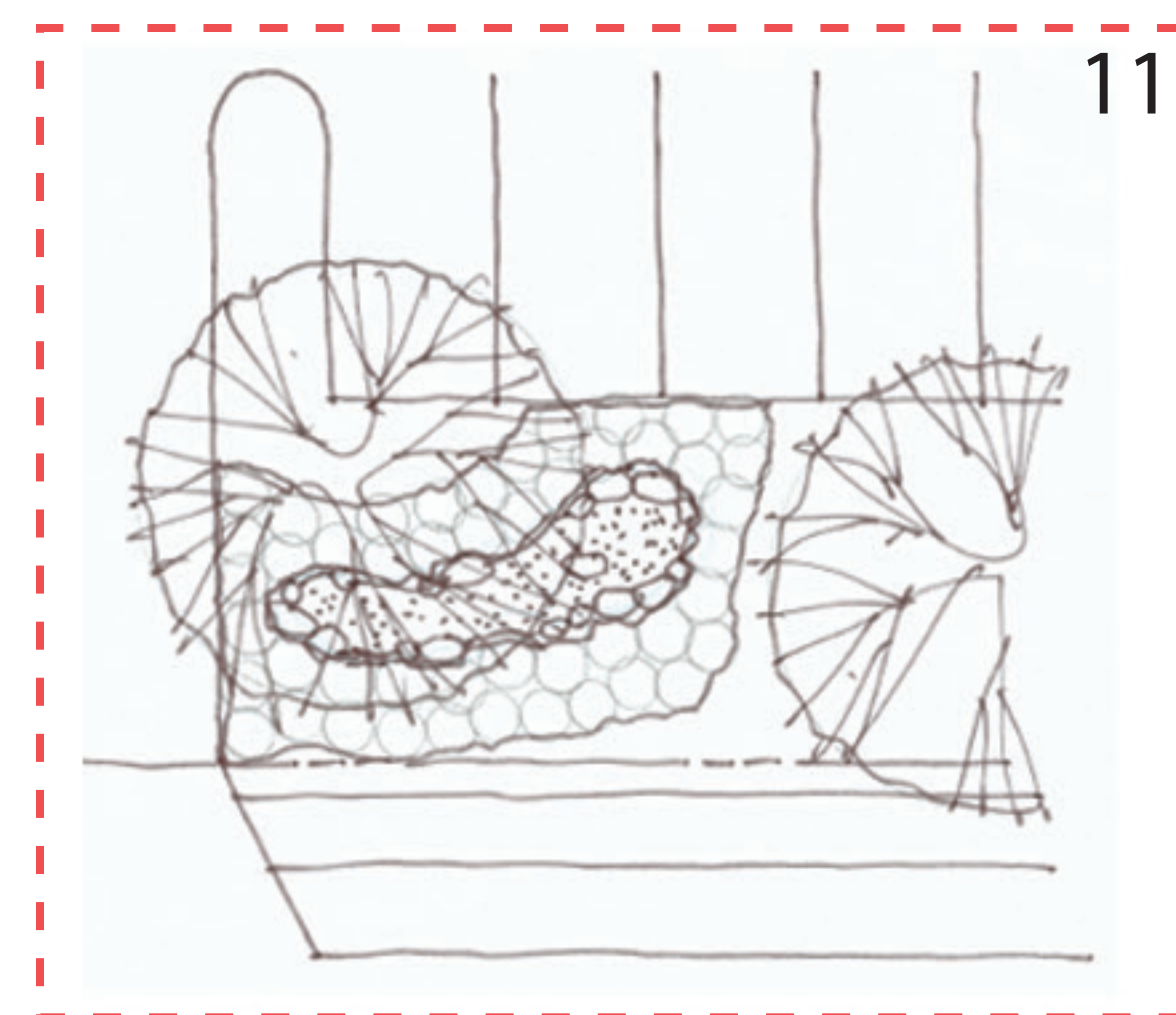
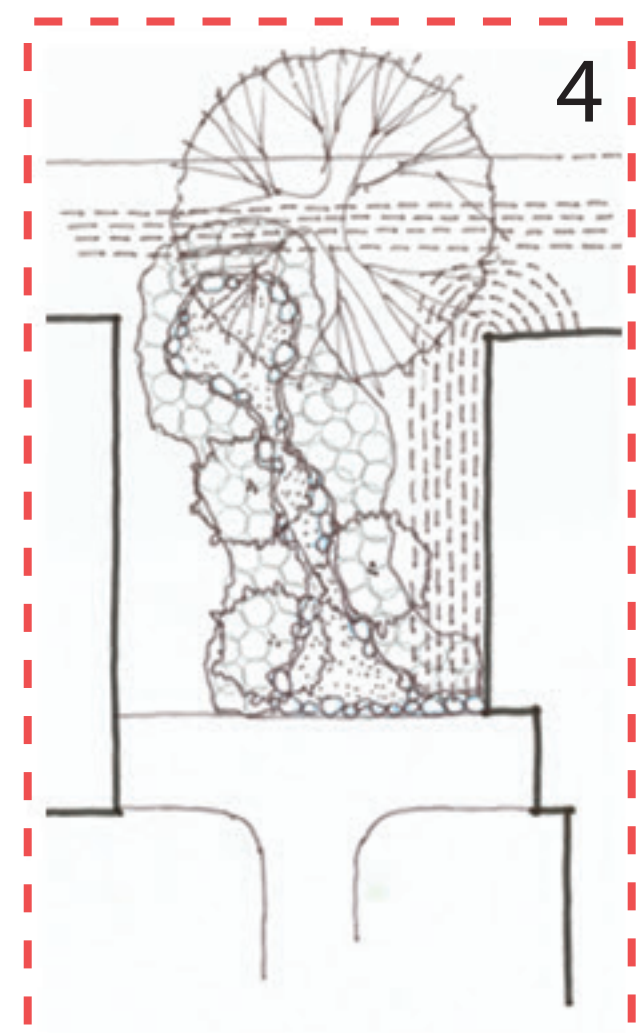
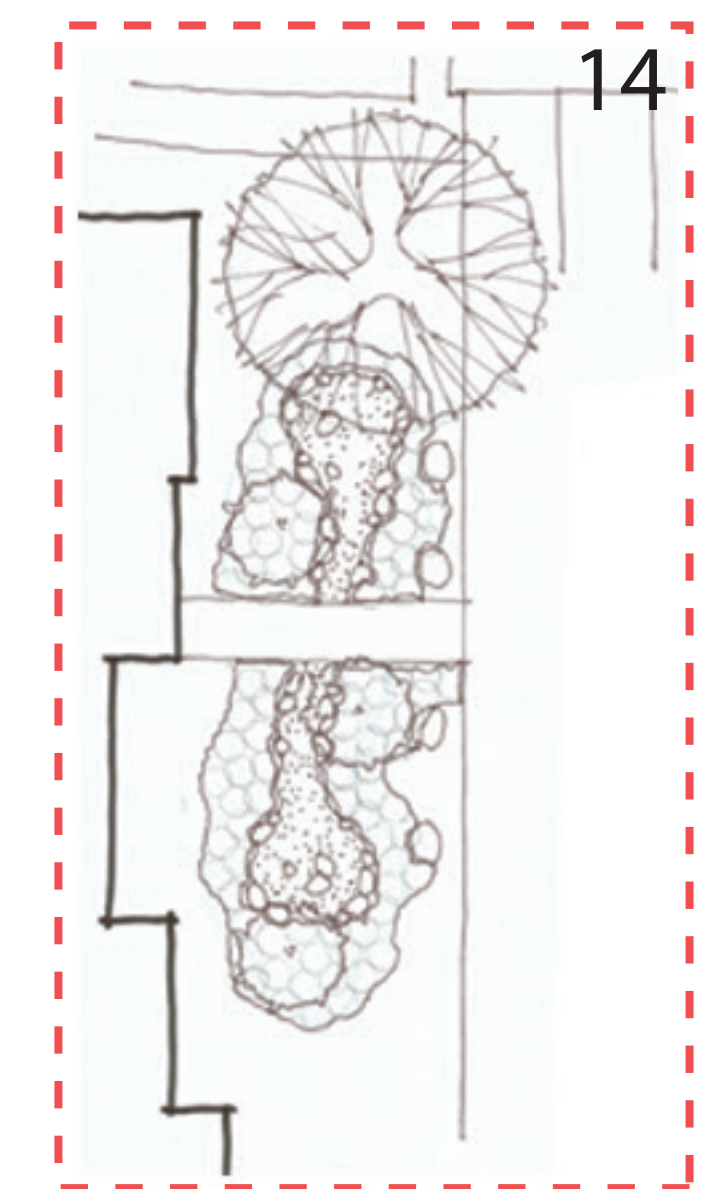
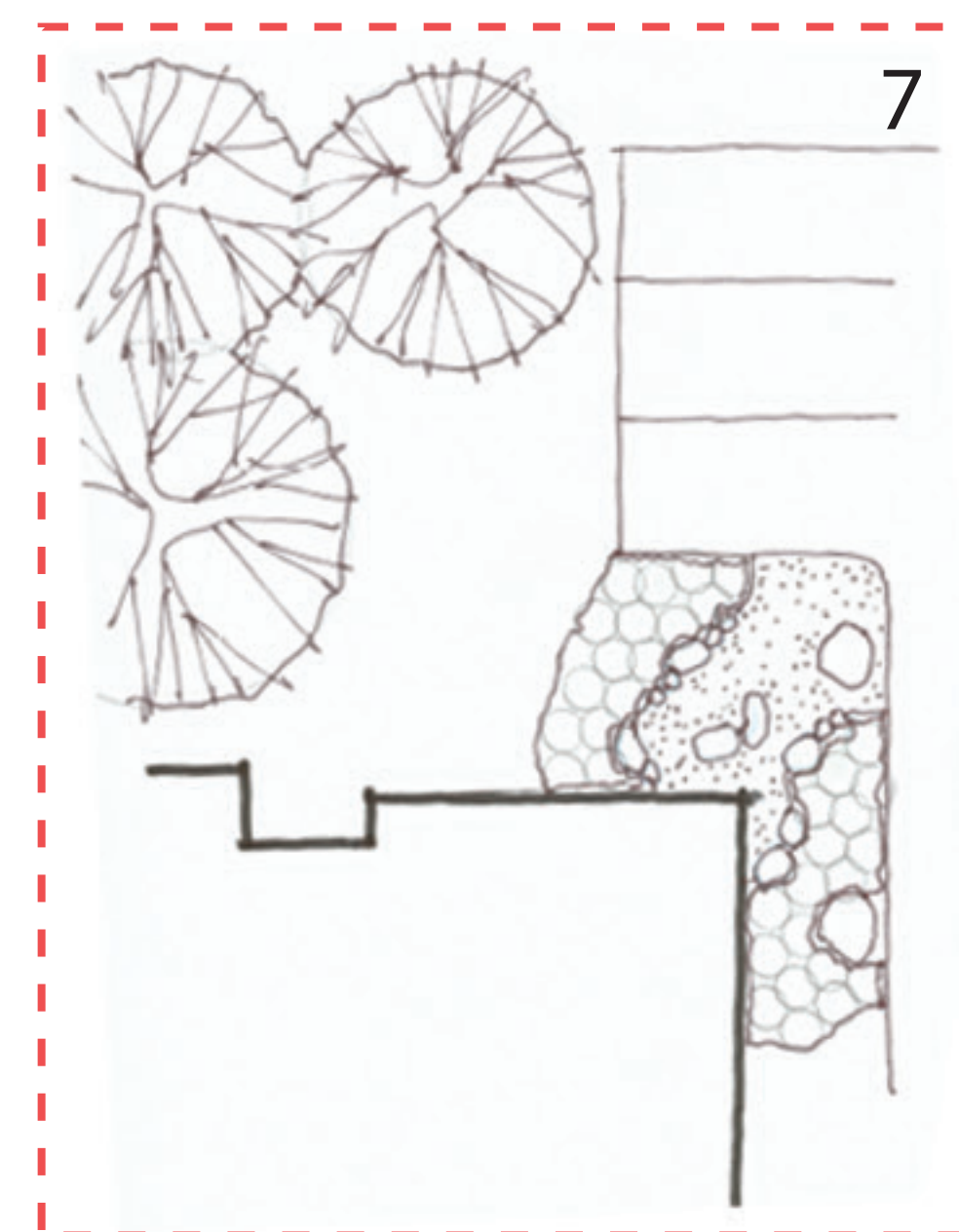
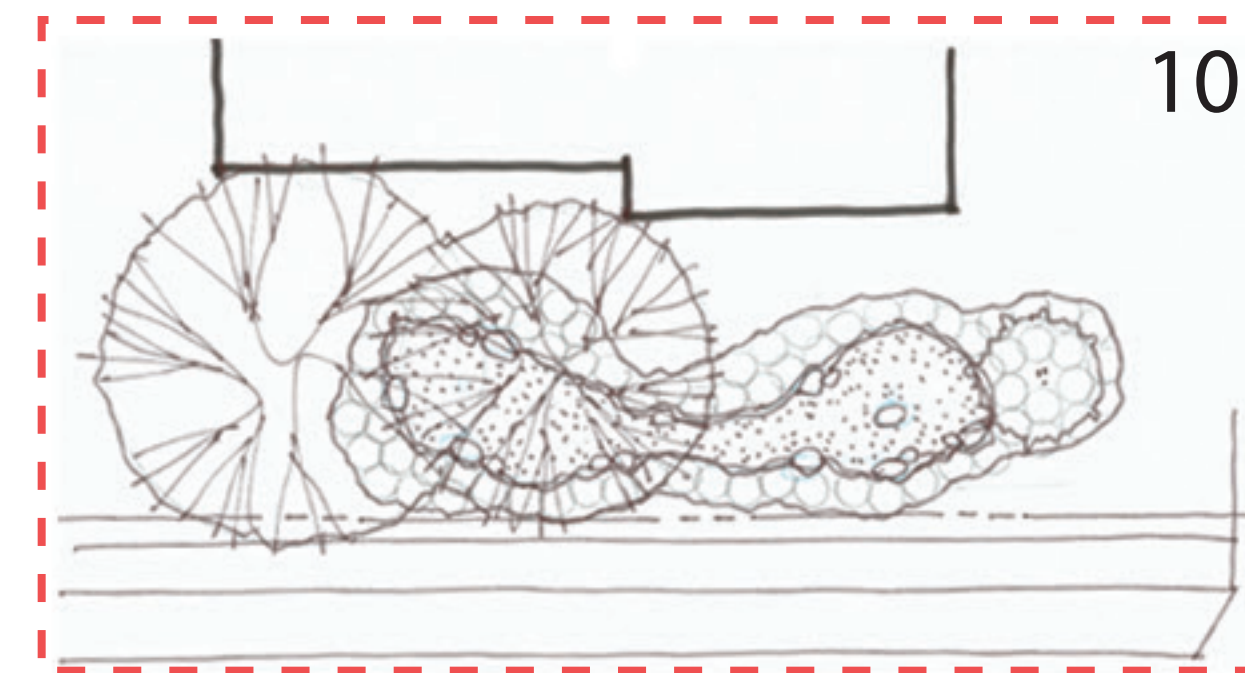
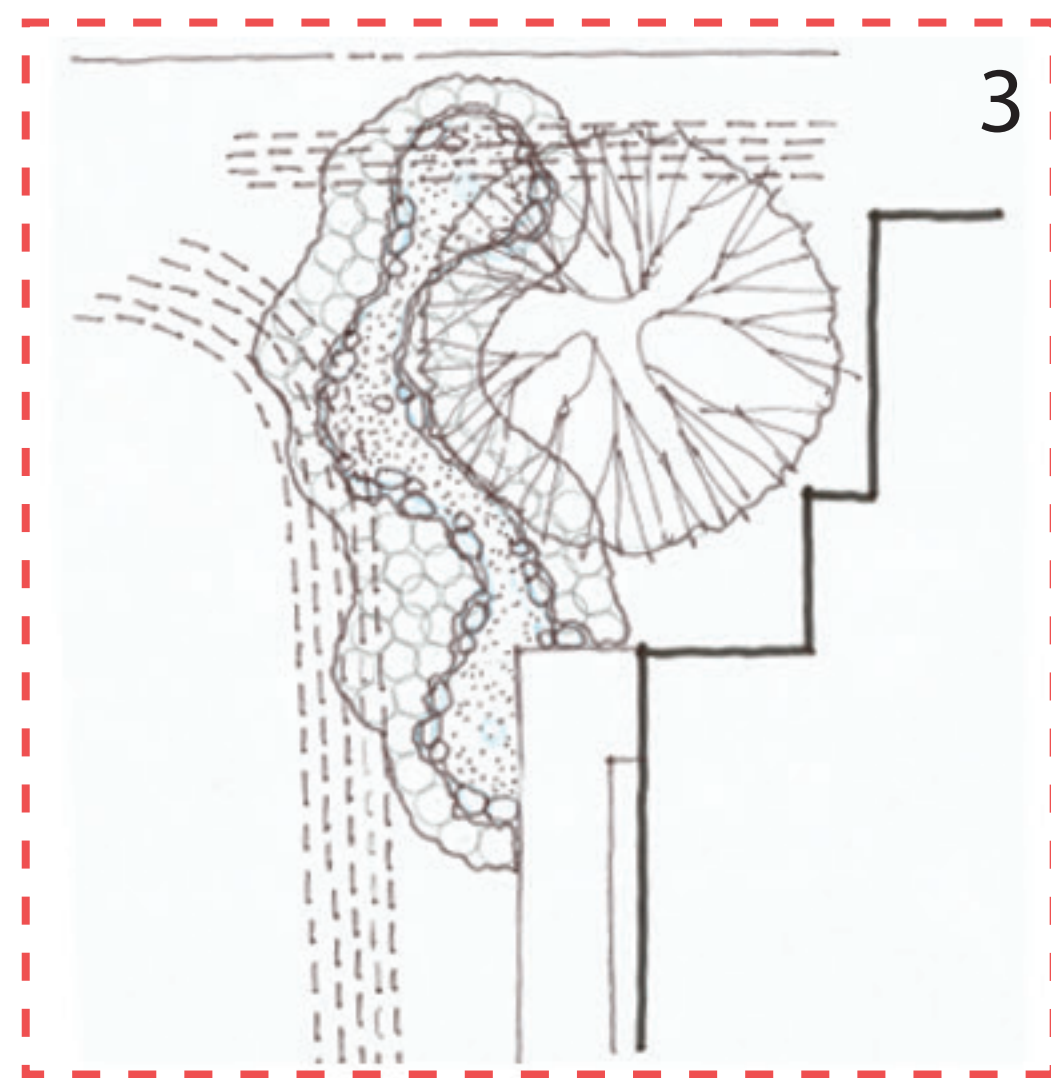
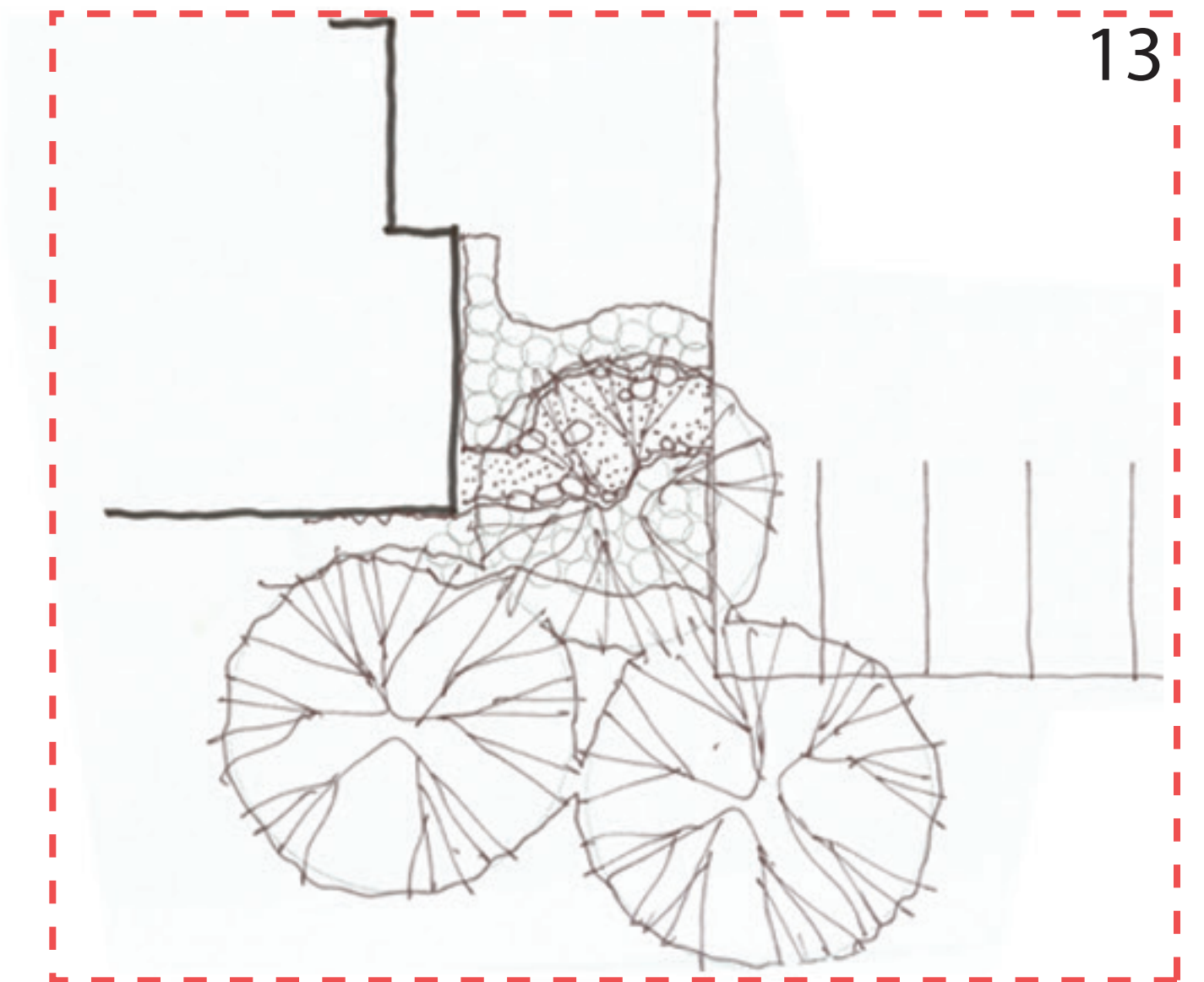
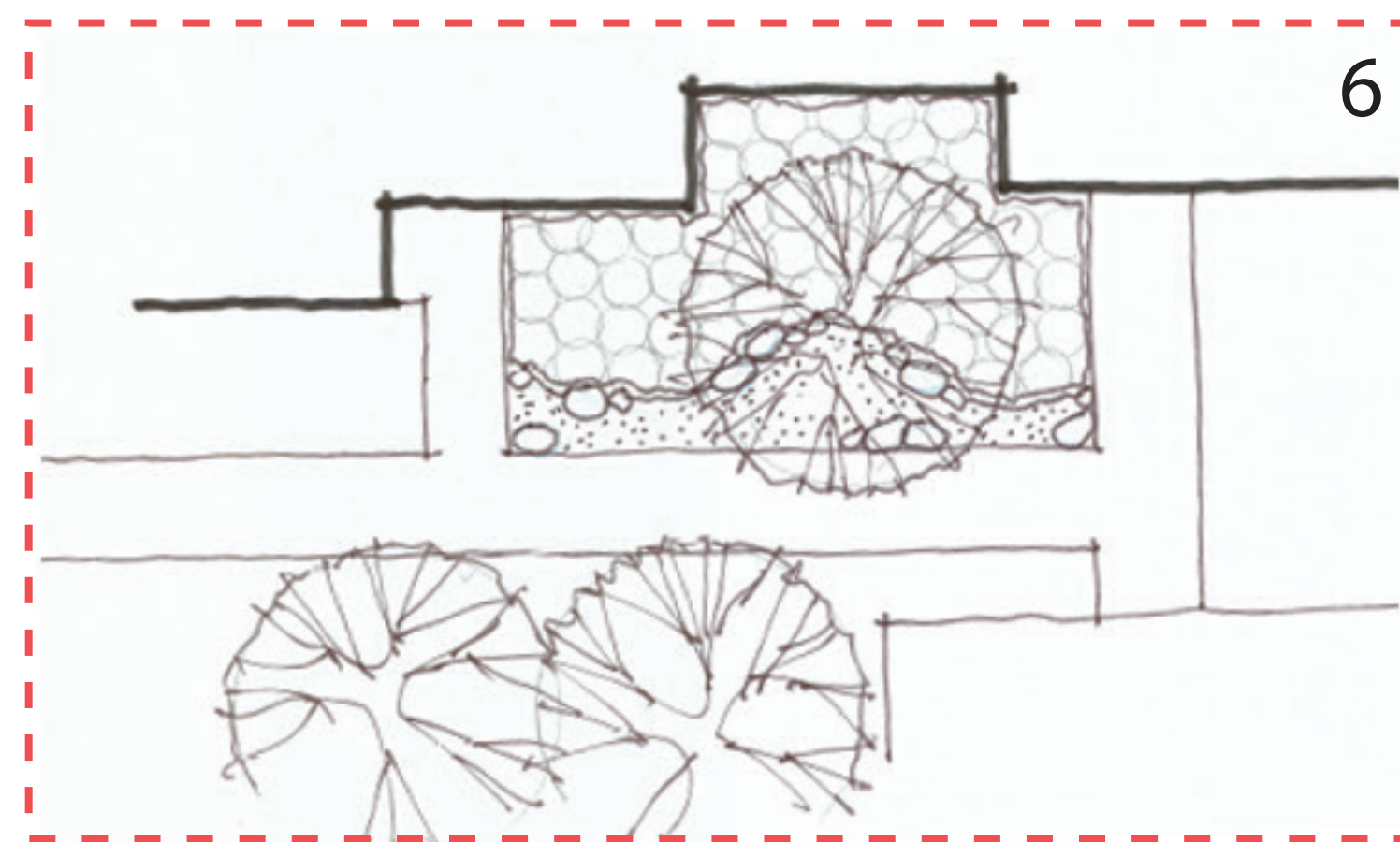
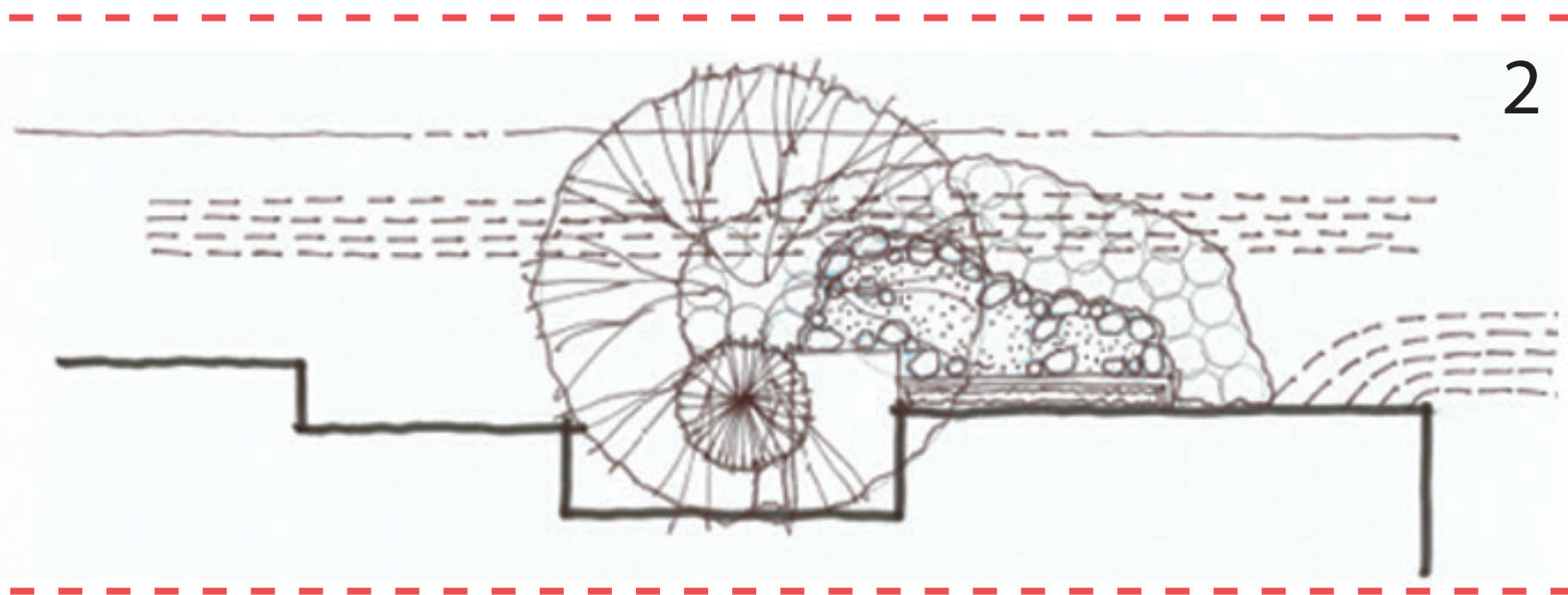
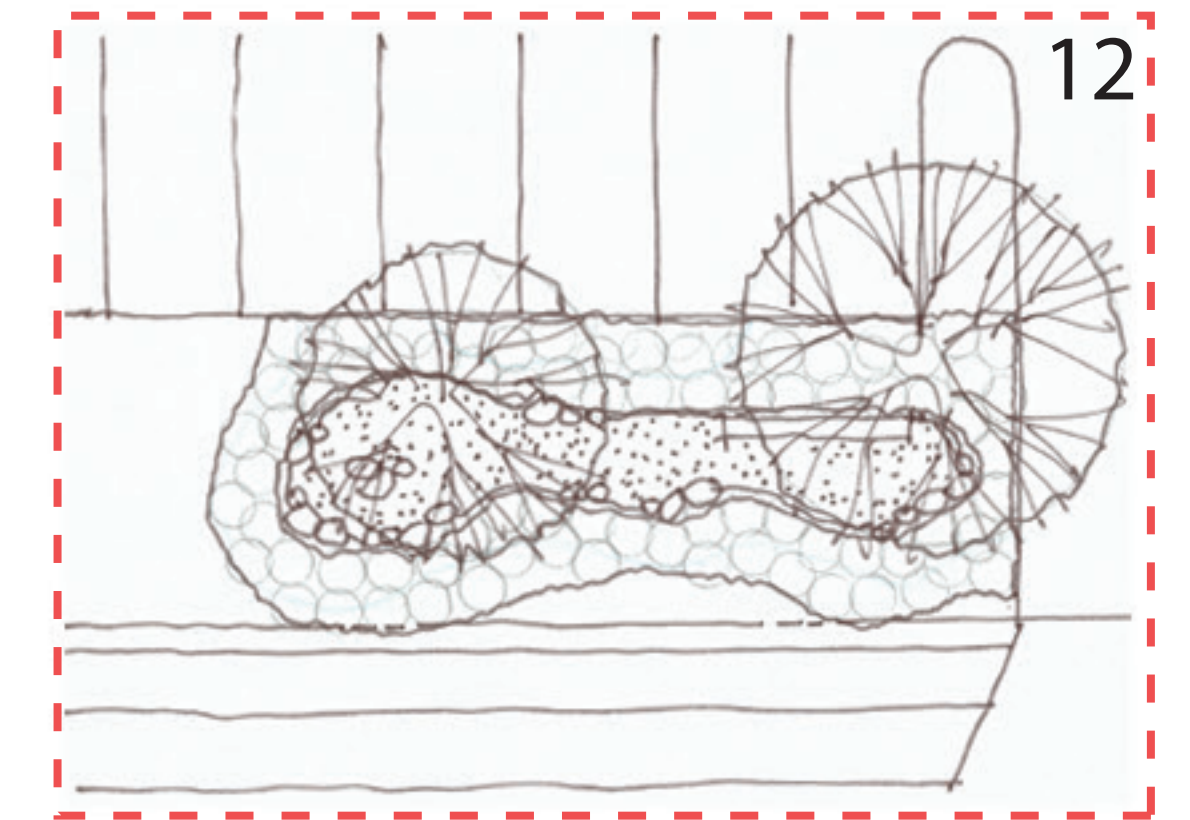
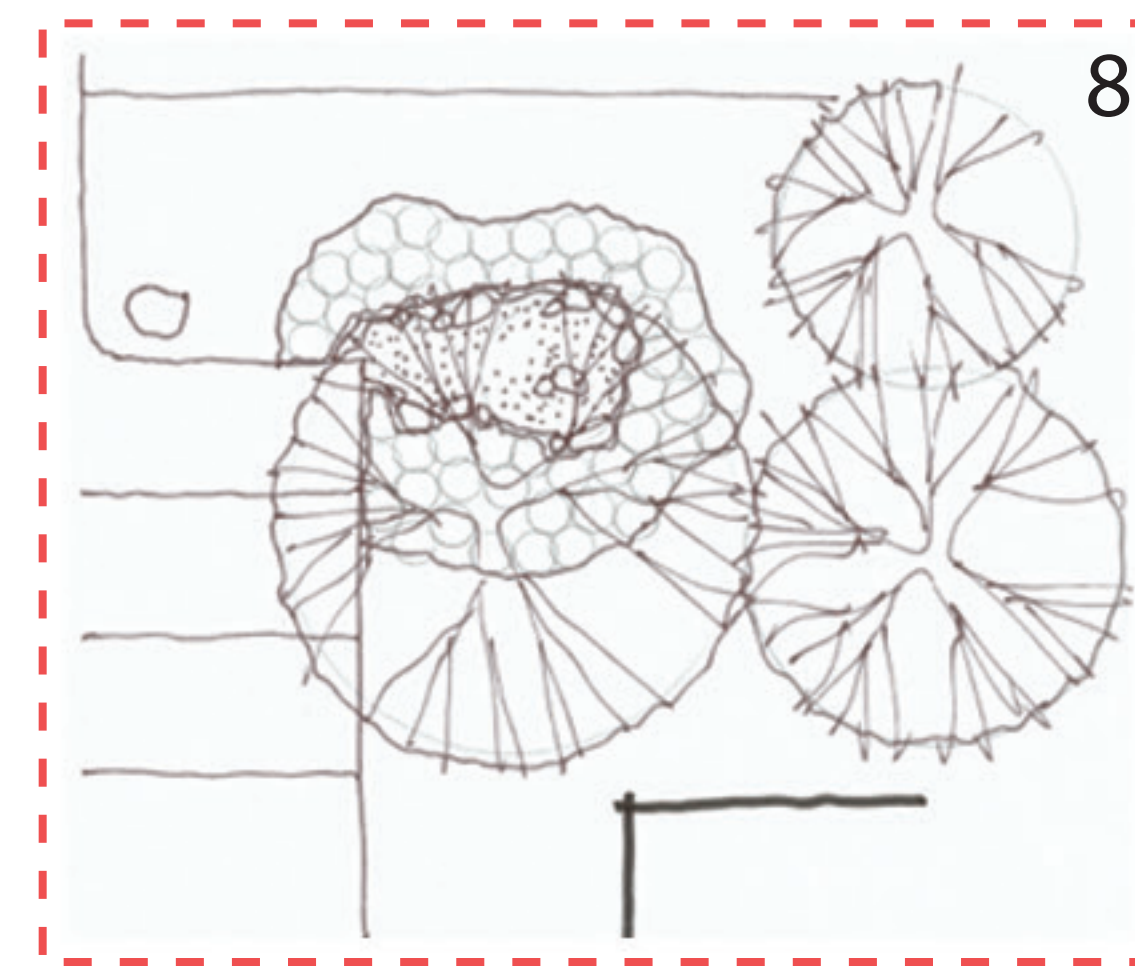
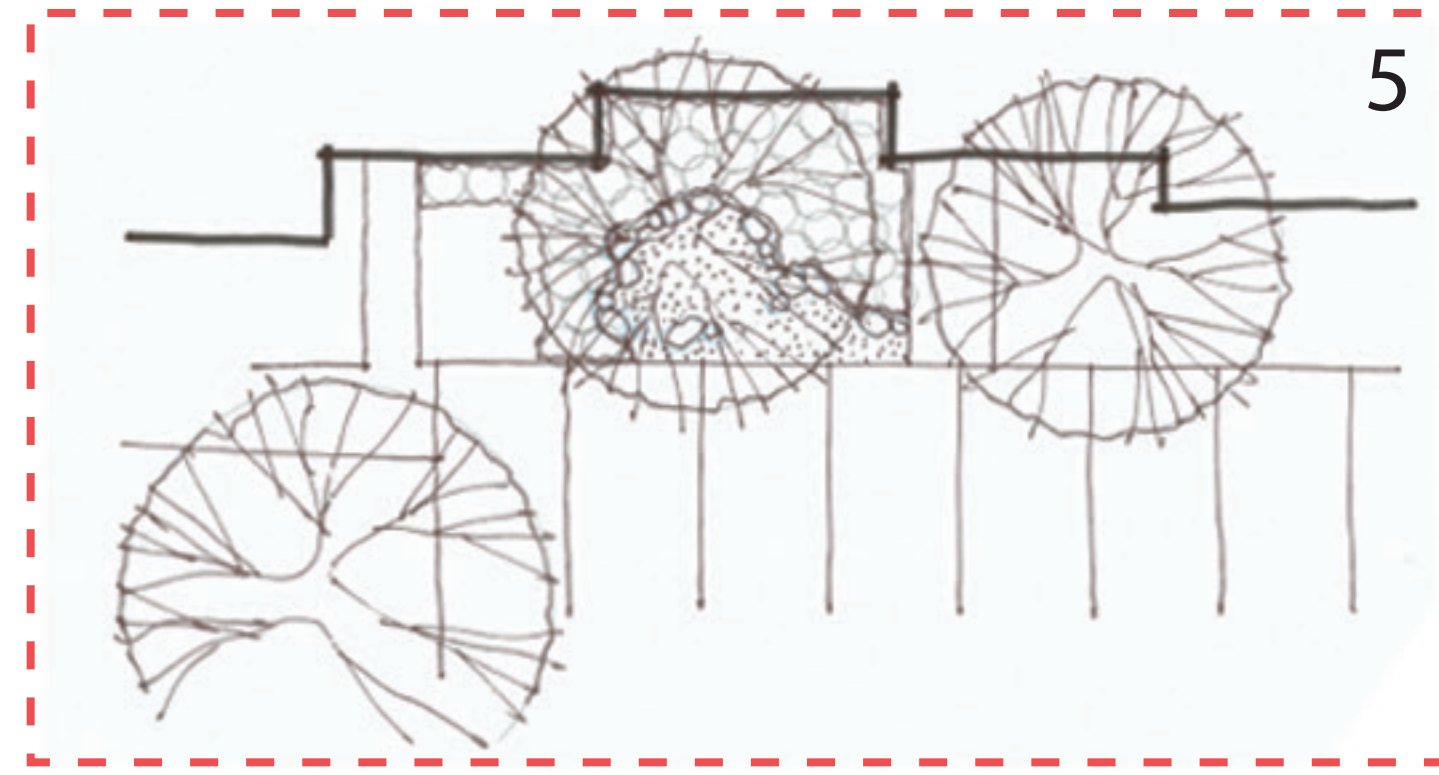
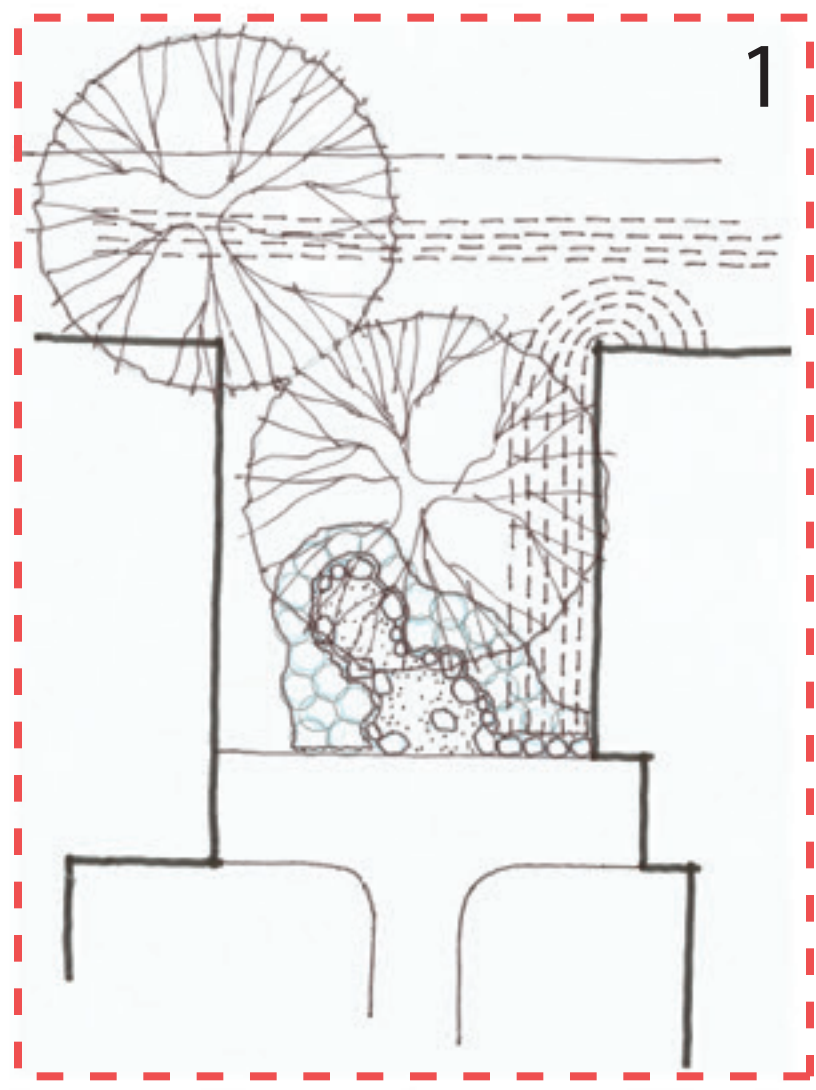
ASHVIEW TERRACE APARTMENTS

ASHWAUBENON, WISCONSIN

WILLARD DRIVE

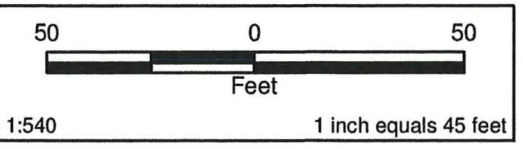


Previous Submittal - verbal approval.



LANDSCAPE ENLARGEMENTS





- Legend**
- Geoprobe Borings (to 8 ft bgs)
 - Geoprobe Boring (to 16 ft bgs)
 - Temporary Well / Geoprobe (to 24 ft bgs)
 - Soil Probes
 - Historic Boring Locations
 - Approximate Site Boundary
 - Proposed Curb Outlines
 - Cover Required (in inches)
 - Sampling Intervals Shown In Inches Below Ground Surface
 - Sampling Intervals Shown In Feet Below Ground Surface
 - Sampling Interval Containing Paper Sludge
 - Sampling Interval Containing Trace Paper Sludge



Drawing C

SOIL BORING RESULTS AND LANDSCAPE PLAN
 Ashview Terrace Apartments
 Ashwaubenon, Brown County, WI

Note: Imagery courtesy of Brown County Planning & Land Services (May 2014)

	Date: 04/18/2019	Project No: 7311150004	Figure:
	Drawn: MJV		
	Checked: JMR		




- Legend**
-  Approximate Site Boundary
 -  Proposed Curb Outlines

OVERALL LANDSCAPE PLAN
 Ashview Terrace Apartments
 Ashwaubenon, Brown County, WI

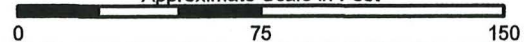
Note: Imagery courtesy of Brown County Planning & Land Services (May 2014)

Figure: **1-1**

	Drawn: MJV	Project No. 7311150004
	Checked: JMR	Date: 02/19/2019

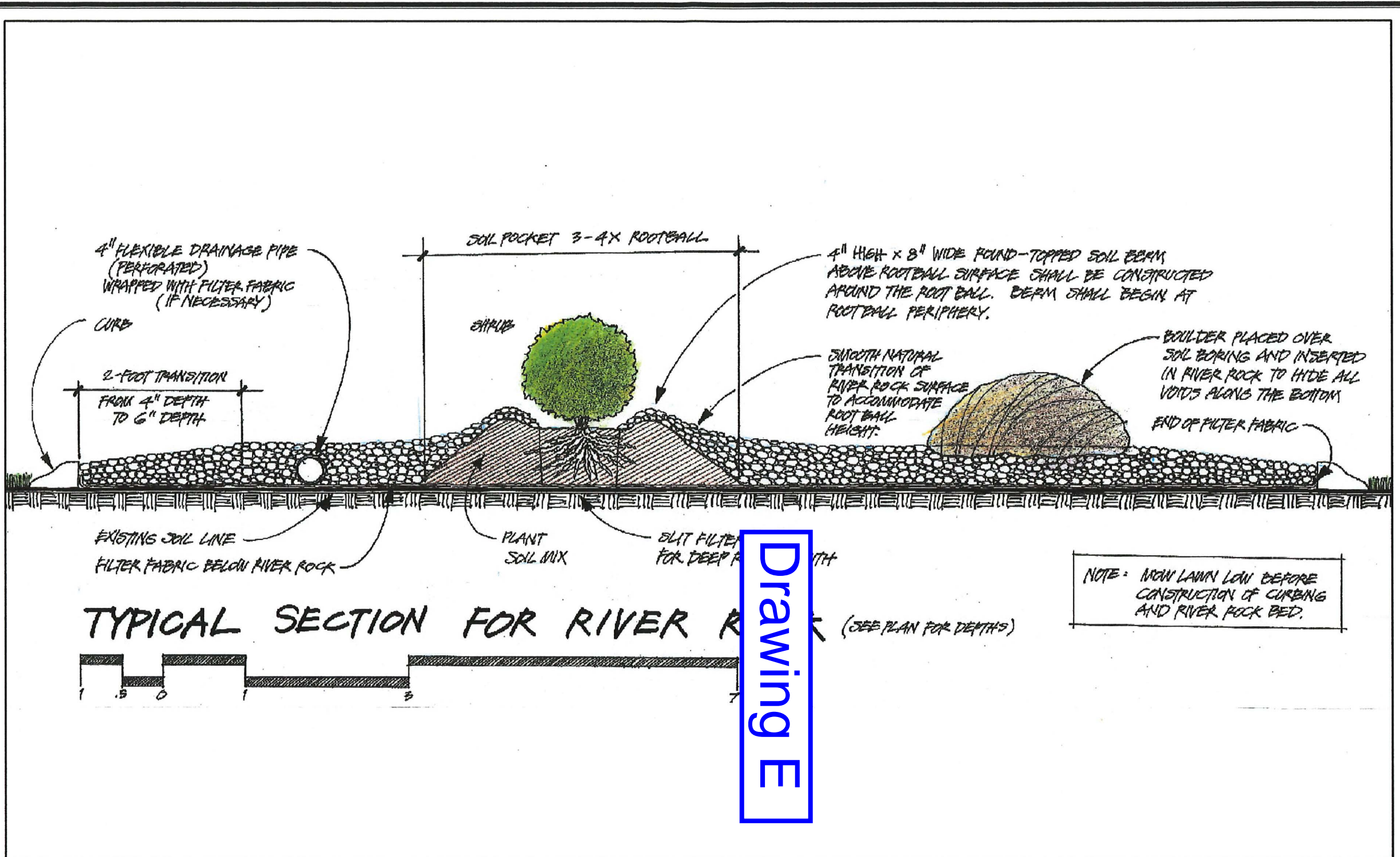
1:900

Approximate Scale in Feet



1 inch equals 75 feet





Drawing E

	TYPICAL AREA CROSS-SECTION SCHEMATIC Ashview Terrace Apartments Ashwaubenon, Brown County, WI	Figure: 3-1	
		Drawn: MJV Checked: JMR	Project No. 7311150004 Date: 02/20/2019

