

From: Beggs, Tauren R - DNR
To: [Streiffer, Adam B - DHS](#)
Cc: [Kinnard, Cindy](#)
Subject: Summary and Photo Documentation of Indoor Air Sampling
Date: Thursday, December 22, 2016 1:43:00 PM
Attachments: [Indoor Air Sampling Memo Dec 2016.pdf](#)
[Basement Condition Memo Dec 2016.pdf](#)

Hi Adam,

Indoor air sampling went well today. Ended up collecting one sample on the first floor in apartment unit #1 as originally intended and one sample on the second floor in apartment unit #5 instead of apartment unit #3. Further explained in the attached memo. I also took a quick look at the basement while I was there as well. If you have any questions, please let me know.

Thanks,

We are committed to service excellence.

Visit our survey at <http://dnr.wi.gov/customersurvey> to evaluate how I did.

Tauren R. Beggs

Hydrogeologist & Northeast Region Land Recycling Expert
Remediation and Redevelopment Program
Wisconsin Department of Natural Resources
2984 Shawano Ave
Green Bay, WI 54313
Phone: (920) 662-5178
Fax: (920) 662-5197
Tauren.Beggs@wisconsin.gov



dnr.wi.gov



CORRESPONDENCE/MEMORANDUM

DATE: December 22, 2016

FILE REF: Allyn Property
BRRTS # 02-31-564071

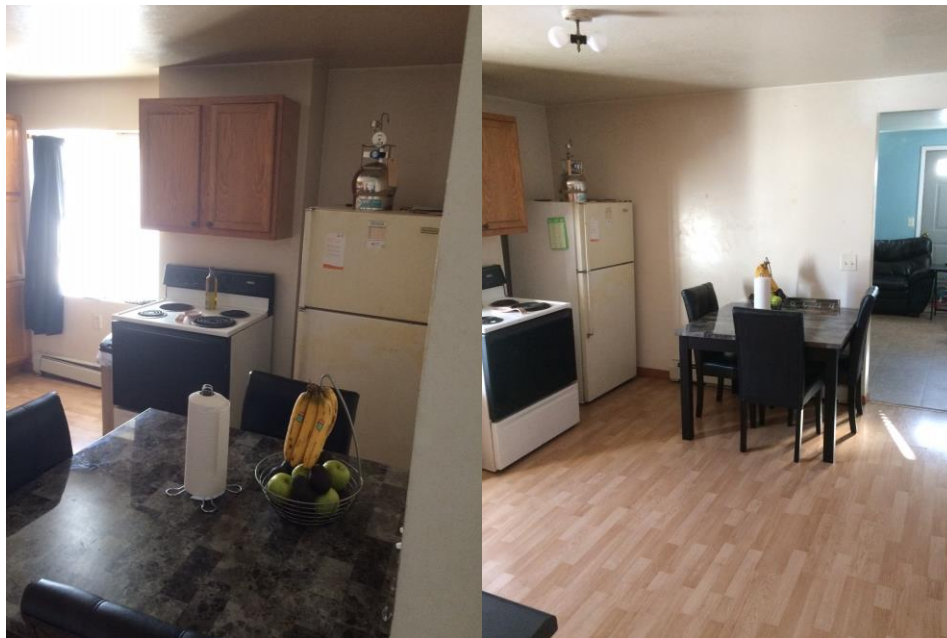
TO: File

FROM: Tauren Beggs - DNR Project Manager

SUBJECT: Indoor Air Sampling at 109 Steele Street, Algoma, WI

Beggs met with Cindy Kinnard – Kewaunee County Health Dept. and Sherry Young - Property Manager at 10am. Beggs had a quick discussion regarding indoor air sampling, collected the signed access agreement from Young, and reiterated that this sampling is only to assess immediate potential concerns and that the responsible party and their environmental consultant will follow up on long-term assessment (sub-slab and indoor air sampling).

The apartment complex is three levels comprising nine units. Beggs setup the Summa canister for sample location IA-1 in Apartment Unit #1 on the first floor. To keep out of the way of kids and other potential interferences, the canister was placed on top of the fridge in the inner, middle portion of the apartment. Common household materials (cleaning materials, etc.) were removed from the apartment unit on December 21, 2016. Beggs collected photo documentation as shown below:



Picture 1 – left: looking east across apartment unit. The Summa canister is on top of the fridge.

Picture 2 – right: looking south-southeast across apartment unit, Summa canister in middle interior portion of the apartment unit on top of the fridge.



Picture 3 – left: Household materials removed on December 21, 2016.

Picture 4 – right: looking north across the apartment unit.

Per initial discussions with Young, Beggs was going to collect the second indoor air sample in apartment unit #3; however, Young found out that the wife and child living there decided to move back to Mexico. It was decided to not sample at this location. There was another apartment unit on the third floor with a single woman and child that Beggs evaluated for sampling. Household materials had not been removed and the tenant is a smoker, so Beggs decided there was too much indoor air source interference to collect a representative indoor air sample in that unit. The vacant unit adjacent to the single woman's unit was also evaluated. Paint cans and other household materials were observed in that unit, so Beggs decided to not sample at this location either due to potential interference. Vacant apartment unit #5 was evaluated on the second floor. There hadn't been any recent restoration work completed in this unit and there were no household materials that would interfere, so Beggs decided this was the next best location to sample indoor air. Therefore, indoor air sampling was conducted on the first and second floors of the apartment complex.

Beggs setup the Summa canister for sample location IA-5 in Apartment Unit #5 on the second floor. To keep out of the way potential interferences, the canister was placed on top of the fridge in the inner portion of the apartment along the middle wall separating the kitchen and bedroom. Beggs collected photo documentation as shown below:



Picture 1 – left: looking north across the apartment unit. The Summa canister is located on top of the fridge. Entry to bedroom shown on right side of photo.

Picture 2 – right: looking west across the apartment unit. There were three other vacant rooms in the unit.

Beggs will return on Friday, December 23, 2016 to collect the canisters and send to the lab for analysis.

CORRESPONDENCE/MEMORANDUM

DATE: December 22, 2016

FILE REF: Allyn Property
BRRTS # 02-31-564071

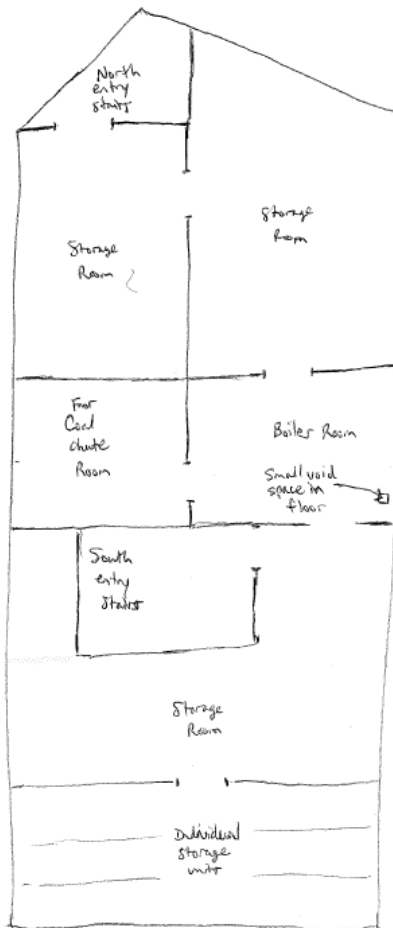
TO: File

FROM: Tauren Beggs - DNR Project Manager

SUBJECT: Initial Basement Evaluation at 109 Steele Street, Algoma, WI

While Beggs was on-site to conduct indoor air sampling, Beggs also looked at the basement with Cindy Kinnard – Kewaunee County Health Dept. and Sherry Young - Property Manager to evaluate its condition. There were minimal cracks in the concrete floor throughout the basement. There was some tiling on the north end that was in decent shape, but the rest of the floor throughout the basement was bare concrete. No sumps/sump pits were observed; however, one square void space was seen at the southeast corner of the boiler room. No floor drains were observed on the initial walkthrough of the basement. The boiler room and former coal chute room are located in the middle of the basement, just north of the southern stairway access. See the hand drawn plan view of the basement below. See photos below:

Plan View of Basement
Layout - Not to Scale





Picture 1 – left: Looking south at southernmost storage room, individual storage unit setup.
Picture 2 – right: Looking south-southwest at doorway to individual storage unit room and next storage room to the north.



Picture 3 – left: Typical concrete floor condition – minimal cracks
Picture 4 – right: Looking at west wall and window well.



Picture 5 – left: Southern stairway entry

Picture 6 – right: Looking to the north-northeast at boiler room



Picture 7 – left: Square void space in concrete floor in the southeast corner of boiler room

Picture 8 – right: Looking west-northwest at the wall between the boiler room and former coal chute room



Picture 9 – left: Looking from north entry of boiler room to the north across the northeast storage room. The wall (slanting to the northwest) at the back of the photo is the north wall of the building.
Picture 10 – right: Looking from the north stairway entry to the south across the northwest storage room. Entryway to northeast storage room shown on left side of photo.



Picture 11 – Looking north at the entryway to the north stairway access. The wall behind the stairs is the north wall of the building.