

July 8, 2024

Mr. Manuel Santos Quispe Villaverde
Wisconsin Department of Natural Resources
Water Quality Bureau
1027 West St. Paul Avenue
Milwaukee, WI 53233

RE: *Modification Request*
WPDES Permit Number WI-0046566-07-0
Carol Investment Corporation
Sunrise Shopping Center (Ace Hardware Store)
1009 Marquette Avenue
South Milwaukee, Wisconsin 53172
BRRTS #: 02-41-576336 & 02-41-579429
FID #: 241828620
FIN #: 63340

Mr. Quispe Villaverde:

In a letter dated July 21, 2022, Wisconsin Department of Natural Resources (WDNR) granted coverage under WPDES Permit Number WI-0046566-07-0 to Carol Investment Corporation for the discharge of treated sump water to the stormwater sewer system adjacent to the Ace Hardware store (1009 Marquette Avenue, South Milwaukee) located at the Sunrise Shopping Center (Site ID 63340). The approval included discharge from a total of three (3) treatment systems to two (2) outfalls (001 and 011). Discharge to Outfall 001 is permitted for water collected in the sump located in the northwest corner of the basement of Ace Hardware (Sump 1) and treated by a system that began operation on May 14, 2019. Discharge to Outfall 011 is permitted for the combination of water collected in the two (2) southern sumps (Sumps 2 and 3) installed in the Ace Hardware basement in 2023 and treated by systems that began operation on September 1, 2023.

In May 2024, discharge to Outfall 001 from Sump 1 was discontinued as a result of a damaged backflow valve and the collapse of the discharge line running from the northwest corner of the Ace Hardware to the adjacent stormwater sewer system. After evaluation of the collapsed discharge line by the plumbing contractor (Bohmann Plumbing), it was determined that the faster, more cost effective (and less environmentally obtrusive) option for the repair was to connect the Sump 1 riser piping to the combined discharge piping associated with Sumps 2 and 3 (i.e., water from Sump 1 now discharging to Outfall 011 along with water from Sumps 2 and 3). The connection was accomplished by running PVC piping along the ceiling of the Ace Hardware

basement and connecting to the Sump 3 riser piping. No other changes have occurred. All three (3) sumps are active, as are the three (3) associated treatment systems. Therefore, the only modification to the existing permit conditions is that Outfall 001 is no longer use (i.e., no discharge) and all water now discharges through Outfall 011 as of May 22, 2024. All discharge sample results remain in compliance with the permit limits and the previously provided discharge management plan remains valid. The figure included as Attachment 1 depicts the sump locations and the associated piping layout. Photographic documentation of the modified connection is provided in Attachment 2.

This submission has been provided to WDNR to update information on file in association with the previous approval to discharge treated water to the stormwater sewer system under WPDES Permit WI-0046566-00. If you have any questions or require additional information in regards to this modification request, please contact me at (847) 996-3580. Thank you for your time.

Sincerely,
DAI Environmental, Inc.

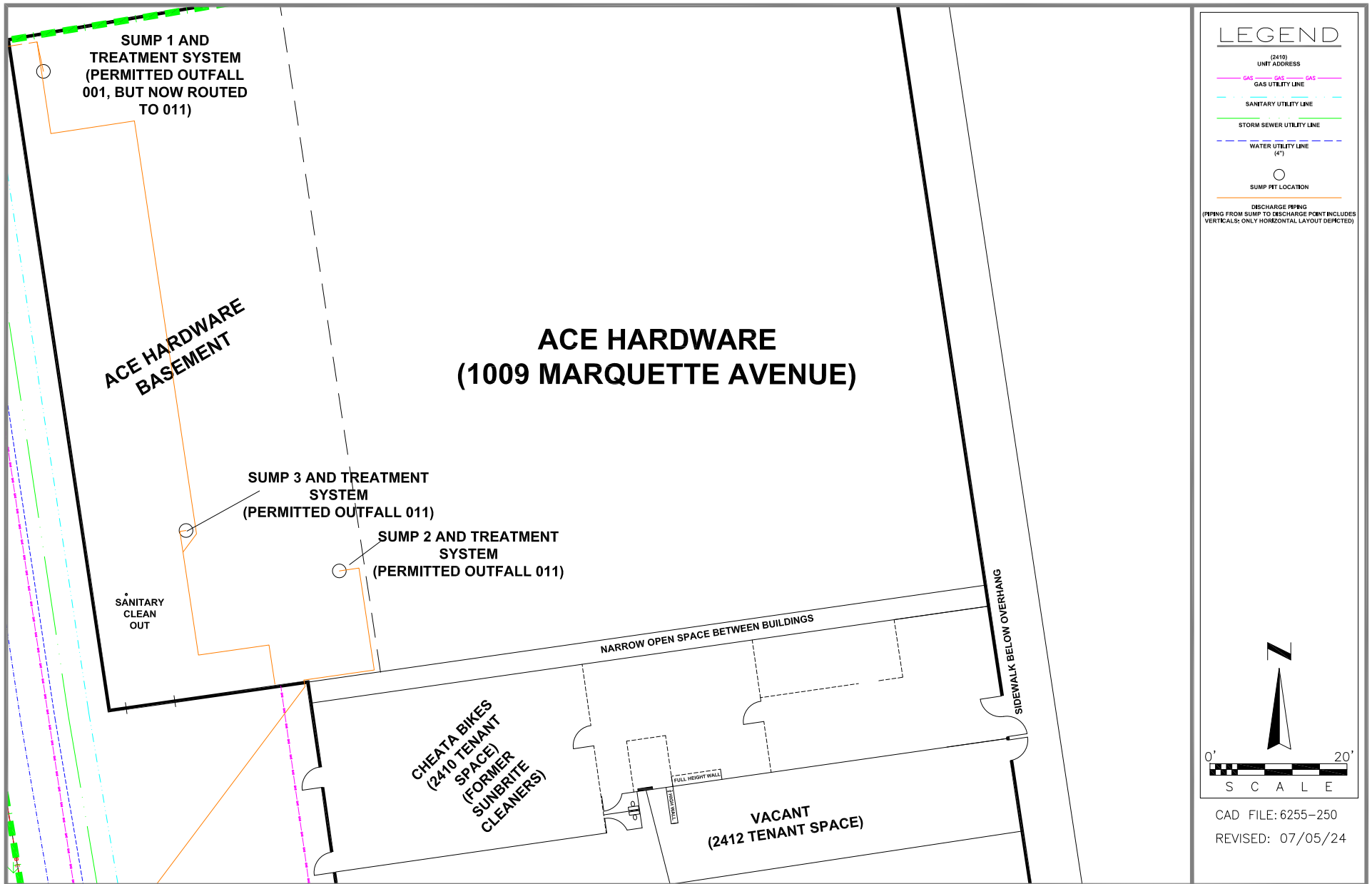
A handwritten signature in blue ink that reads "Christopher Cailles".

Christopher Cailles, P.E.
Project Engineer

Attachments

cc: Riley Neumann – WDNR RR Program (w/enclosure electronically)

ATTACHMENT A
FIGURE



DAI
ENVIRONMENTAL

**SUNRISE SHOPPING CENTER-FORMER DRY CLEANER
2410-2424 10TH AVENUE
1009 MARQUETTE AVENUE
SOUTH MILWAUKEE, WISCONSIN**

**FIGURE 1
ACE HARDWARE SUMPS AND
TREATMENT SYSTEMS WITH
DISCHARGE PIPING LAYOUT**

ATTACHMENT 2
PHOTOGRAPHIC DOCUMENTATION
(SUMPS, TREATMENT SYSTEMS, AND DISCHARGE OUTFALL 011)

PHOTO #1



IMAGE OF SUMP 1 AND ASSOCIATED REMEDIATION SYSTEM; PVC PIPING CONNECTS TO SUMP 3 PIPING THAT RUNS TO DISCHARGE THROUGH SOUTHERN WALL OF ACE HARDWARE BASEMENT (OUTFALL 011); SUMP 1 NO LONGER DISCHARGES TO OUTFALL 001 (OUT-OF-SERVICE)

PHOTO #2

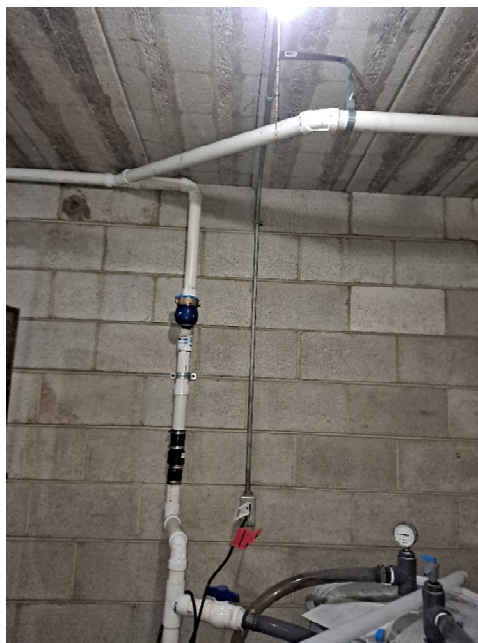


IMAGE SUMP 1 PVC PIPING CONNECTING TO SUMP 3 PVC PIPING

PHOTO #3



IMAGE OF SUMP 2 AND ASSOCIATED REMEDIATION SYSTEM; PVC PIPING CONNECTS TO DISCHARGE LINE THAT RUNS THROUGH SOUTHERN WALL OF ACE HARDWARE BASEMENT (OUTFALL 011)

PHOTO #4



IMAGE OF SUMP 3 AND ASSOCIATED REMEDIATION SYSTEM; PVC PIPING CONNECTS TO DISCHARGE LINE THAT RUNS THROUGH SOUTHERN WALL OF ACE HARDWARE BASEMENT (OUTFALL 011)

PHOTO #5



IMAGE OF DISCHARGE LINE THAT RUNS THROUGH SOUTHERN WALL OF ACE HARDWARE BASEMENT (OUTFALL 011); SAMPLE PORT IN BOTTOM OF DISCHARGE LINE NOT PICTURED