

## Jorgensen, Theadora O - DNR

---

**From:** Stephen Owens <sowens@gilesengr.com>  
**Sent:** Thursday, May 21, 2020 4:15 PM  
**To:** Cieslak, Douglas J - DNR; DNR RR SER  
**Subject:** 0230582211\_PershingPlazaShoppingCenter  
**Attachments:** 0230582211\_LabRpts2ndSet.pdf; 0230582211\_SitePlan.pdf

Doug,

Attached are the lab reports for the soil, sub-slab vapor, and groundwater samples collected as part of the supplemental site investigation. Paper copies are also being mailed to the WDNR. Electronic versions have been provided to the site owner and the responsible party. Also attached is a site map. Please let me know if you have any questions.

Thanks,  
Steve Owens

Stephen M. Owens, P.G., P.H.  
Project Manager



N8 W22350 Johnson Dr., Suite A1  
Waukesha, WI 53186  
P: (262) 544-0118  
F: (262) 549-5868  
[www.gilesengr.com](http://www.gilesengr.com)

This e-mail, including its attachments, contains privileged and confidential information made with the fullest expectation of legal protection and made solely for the use of the intended recipient. As unintended recipient, you are notified that copying, distribution/dissemination, or action taken relating to the e-mail's content is prohibited and may be unlawful. If you received this e-mail in error, please notify Giles Engineering Associates, Inc. (Giles), permanently delete the original, and destroy printed copies. If representations are made herein concerning matters of a client of Giles, such representations are not those of the client and cannot purport to bind them.

# Synergy Environmental Lab, INC

1990 Prospect Ct., Appleton, WI 54914 \*P 920-830-2455 \* F 920-733-0631

STEVE OWENS  
GILES ENGINEERING  
N8 W22350 JOHNSON DRIVE  
WAUKESHA, WI 53186

Report Date 24-Apr-20

Project Name PERSHING PLAZA  
Project # 1E-1902007

Invoice # E37781

Lab Code 5037781A  
Sample ID B-5 (3-4)  
Sample Matrix Soil  
Sample Date 4/16/2020

	Result	Unit	LOD	LOQ	Dil	Method	Ext Date	Run Date	Analyst	Code
General										
General										
Solids Percent	86.0	%			1	5021		4/20/2020	NJC	1
Organic										
VOC's										
Benzene	< 0.03	mg/kg	0.03	0.096	1	8260B		4/23/2020	CJR	1
Bromobenzene	< 0.025	mg/kg	0.025	0.081	1	8260B		4/23/2020	CJR	1
Bromodichloromethane	< 0.074	mg/kg	0.074	0.24	1	8260B		4/23/2020	CJR	1
Bromoform	< 0.029	mg/kg	0.029	0.092	1	8260B		4/23/2020	CJR	1
tert-Butylbenzene	< 0.026	mg/kg	0.026	0.084	1	8260B		4/23/2020	CJR	1
sec-Butylbenzene	< 0.033	mg/kg	0.033	0.1	1	8260B		4/23/2020	CJR	1
n-Butylbenzene	< 0.04	mg/kg	0.04	0.13	1	8260B		4/23/2020	CJR	1
Carbon Tetrachloride	< 0.016	mg/kg	0.016	0.053	1	8260B		4/23/2020	CJR	1
Chlorobenzene	< 0.013	mg/kg	0.013	0.04	1	8260B		4/23/2020	CJR	1
Chloroethane	< 0.091	mg/kg	0.091	0.29	1	8260B		4/23/2020	CJR	1
Chloroform	< 0.035	mg/kg	0.035	0.11	1	8260B		4/23/2020	CJR	1
Chloromethane	< 0.076	mg/kg	0.076	0.24	1	8260B		4/23/2020	CJR	1
2-Chlorotoluene	< 0.015	mg/kg	0.015	0.047	1	8260B		4/23/2020	CJR	1
4-Chlorotoluene	< 0.018	mg/kg	0.018	0.057	1	8260B		4/23/2020	CJR	1
1,2-Dibromo-3-chloropropane	< 0.058	mg/kg	0.058	0.18	1	8260B		4/23/2020	CJR	1
Dibromochloromethane	< 0.025	mg/kg	0.025	0.079	1	8260B		4/23/2020	CJR	1
1,4-Dichlorobenzene	< 0.037	mg/kg	0.037	0.12	1	8260B		4/23/2020	CJR	1
1,3-Dichlorobenzene	< 0.037	mg/kg	0.037	0.12	1	8260B		4/23/2020	CJR	1
1,2-Dichlorobenzene	< 0.028	mg/kg	0.028	0.088	1	8260B		4/23/2020	CJR	1
Dichlorodifluoromethane	< 0.048	mg/kg	0.048	0.15	1	8260B		4/23/2020	CJR	1
1,2-Dichloroethane	< 0.038	mg/kg	0.038	0.12	1	8260B		4/23/2020	CJR	1
1,1-Dichloroethane	< 0.034	mg/kg	0.034	0.11	1	8260B		4/23/2020	CJR	1

**Project Name** PERSHING PLAZA  
**Project #** 1E-1902007

**Invoice #** E37781

**Lab Code** 5037781A  
**Sample ID** B-5 (3-4)  
**Sample Matrix** Soil  
**Sample Date** 4/16/2020

	Result	Unit	LOD	LOQ	Dil	Method	Ext Date	Run Date	Analyst	Code
1,1-Dichloroethene	< 0.022	mg/kg	0.022	0.069	1	8260B		4/23/2020	CJR	1
cis-1,2-Dichloroethene	< 0.032	mg/kg	0.032	0.1	1	8260B		4/23/2020	CJR	1
trans-1,2-Dichloroethene	< 0.028	mg/kg	0.028	0.09	1	8260B		4/23/2020	CJR	1
1,2-Dichloropropane	< 0.035	mg/kg	0.035	0.11	1	8260B		4/23/2020	CJR	1
1,3-Dichloropropane	< 0.025	mg/kg	0.025	0.079	1	8260B		4/23/2020	CJR	1
trans-1,3-Dichloropropene	< 0.022	mg/kg	0.022	0.068	1	8260B		4/23/2020	CJR	1
cis-1,3-Dichloropropene	< 0.039	mg/kg	0.039	0.12	1	8260B		4/23/2020	CJR	1
Di-isopropyl ether	< 0.01	mg/kg	0.01	0.032	1	8260B		4/23/2020	CJR	1
EDB (1,2-Dibromoethane)	< 0.023	mg/kg	0.023	0.072	1	8260B		4/23/2020	CJR	1
Ethylbenzene	< 0.035	mg/kg	0.035	0.11	1	8260B		4/23/2020	CJR	1
Hexachlorobutadiene	< 0.085	mg/kg	0.085	0.27	1	8260B		4/23/2020	CJR	1
Isopropylbenzene	< 0.034	mg/kg	0.034	0.11	1	8260B		4/23/2020	CJR	1
p-Isopropyltoluene	< 0.029	mg/kg	0.029	0.093	1	8260B		4/23/2020	CJR	1
Methylene chloride	< 0.15	mg/kg	0.15	0.46	1	8260B		4/23/2020	CJR	1
Methyl tert-butyl ether (MTBE)	< 0.05	mg/kg	0.05	0.16	1	8260B		4/23/2020	CJR	1
Naphthalene	< 0.094	mg/kg	0.094	0.3	1	8260B		4/23/2020	CJR	1
n-Propylbenzene	< 0.033	mg/kg	0.033	0.1	1	8260B		4/23/2020	CJR	1
1,1,2,2-Tetrachloroethane	< 0.028	mg/kg	0.028	0.88	1	8260B		4/23/2020	CJR	1
1,1,1,2-Tetrachloroethane	< 0.028	mg/kg	0.028	0.09	1	8260B		4/23/2020	CJR	1
Tetrachloroethene	< 0.032	mg/kg	0.032	0.1	1	8260B		4/23/2020	CJR	1
Toluene	< 0.032	mg/kg	0.032	0.1	1	8260B		4/23/2020	CJR	1
1,2,4-Trichlorobenzene	< 0.064	mg/kg	0.064	0.2	1	8260B		4/23/2020	CJR	1
1,2,3-Trichlorobenzene	< 0.066	mg/kg	0.066	0.21	1	8260B		4/23/2020	CJR	1
1,1,1-Trichloroethane	< 0.03	mg/kg	0.03	0.96	1	8260B		4/23/2020	CJR	1
1,1,2-Trichloroethane	< 0.033	mg/kg	0.033	0.11	1	8260B		4/23/2020	CJR	1
Trichloroethene (TCE)	< 0.041	mg/kg	0.041	0.13	1	8260B		4/23/2020	CJR	1
Trichlorofluoromethane	< 0.041	mg/kg	0.041	0.13	1	8260B		4/23/2020	CJR	1
1,2,4-Trimethylbenzene	< 0.025	mg/kg	0.025	0.08	1	8260B		4/23/2020	CJR	1
1,3,5-Trimethylbenzene	< 0.032	mg/kg	0.032	0.1	1	8260B		4/23/2020	CJR	1
Vinyl Chloride	< 0.019	mg/kg	0.019	0.062	1	8260B		4/23/2020	CJR	1
m&p-Xylene	< 0.072	mg/kg	0.072	0.23	1	8260B		4/23/2020	CJR	1
o-Xylene	< 0.044	mg/kg	0.044	0.14	1	8260B		4/23/2020	CJR	1
SUR - Toluene-d8	99	Rec %			1	8260B		4/23/2020	CJR	1
SUR - 1,2-Dichloroethane-d4	104	Rec %			1	8260B		4/23/2020	CJR	1
SUR - 4-Bromofluorobenzene	98	Rec %			1	8260B		4/23/2020	CJR	1
SUR - Dibromofluoromethane	98	Rec %			1	8260B		4/23/2020	CJR	1

**Project Name** PERSHING PLAZA  
**Project #** 1E-1902007

**Invoice #** E37781

**Lab Code** 5037781B  
**Sample ID** B-5 (8-10)  
**Sample Matrix** Soil  
**Sample Date** 4/16/2020

	Result	Unit	LOD	LOQ	Dil	Method	Ext Date	Run Date	Analyst	Code
General										
General										
Solids Percent	85.4	%			1	5021		4/20/2020	NJC	1
Organic										
VOC's										
Benzene	< 0.03	mg/kg	0.03	0.096	1	8260B		4/23/2020	CJR	1
Bromobenzene	< 0.025	mg/kg	0.025	0.081	1	8260B		4/23/2020	CJR	1
Bromodichloromethane	< 0.074	mg/kg	0.074	0.24	1	8260B		4/23/2020	CJR	1
Bromoform	< 0.029	mg/kg	0.029	0.092	1	8260B		4/23/2020	CJR	1
tert-Butylbenzene	< 0.026	mg/kg	0.026	0.084	1	8260B		4/23/2020	CJR	1
sec-Butylbenzene	< 0.033	mg/kg	0.033	0.1	1	8260B		4/23/2020	CJR	1
n-Butylbenzene	< 0.04	mg/kg	0.04	0.13	1	8260B		4/23/2020	CJR	1
Carbon Tetrachloride	< 0.016	mg/kg	0.016	0.053	1	8260B		4/23/2020	CJR	1
Chlorobenzene	< 0.013	mg/kg	0.013	0.04	1	8260B		4/23/2020	CJR	1
Chloroethane	< 0.091	mg/kg	0.091	0.29	1	8260B		4/23/2020	CJR	1
Chloroform	< 0.035	mg/kg	0.035	0.11	1	8260B		4/23/2020	CJR	1
Chloromethane	< 0.076	mg/kg	0.076	0.24	1	8260B		4/23/2020	CJR	1
2-Chlorotoluene	< 0.015	mg/kg	0.015	0.047	1	8260B		4/23/2020	CJR	1
4-Chlorotoluene	< 0.018	mg/kg	0.018	0.057	1	8260B		4/23/2020	CJR	1
1,2-Dibromo-3-chloropropane	< 0.058	mg/kg	0.058	0.18	1	8260B		4/23/2020	CJR	1
Dibromochloromethane	< 0.025	mg/kg	0.025	0.079	1	8260B		4/23/2020	CJR	1
1,4-Dichlorobenzene	< 0.037	mg/kg	0.037	0.12	1	8260B		4/23/2020	CJR	1
1,3-Dichlorobenzene	< 0.037	mg/kg	0.037	0.12	1	8260B		4/23/2020	CJR	1
1,2-Dichlorobenzene	< 0.028	mg/kg	0.028	0.088	1	8260B		4/23/2020	CJR	1
Dichlorodifluoromethane	< 0.048	mg/kg	0.048	0.15	1	8260B		4/23/2020	CJR	1
1,2-Dichloroethane	< 0.038	mg/kg	0.038	0.12	1	8260B		4/23/2020	CJR	1
1,1-Dichloroethane	< 0.034	mg/kg	0.034	0.11	1	8260B		4/23/2020	CJR	1
1,1-Dichloroethene	< 0.022	mg/kg	0.022	0.069	1	8260B		4/23/2020	CJR	1
cis-1,2-Dichloroethene	< 0.032	mg/kg	0.032	0.1	1	8260B		4/23/2020	CJR	1
trans-1,2-Dichloroethene	< 0.028	mg/kg	0.028	0.09	1	8260B		4/23/2020	CJR	1
1,2-Dichloropropane	< 0.035	mg/kg	0.035	0.11	1	8260B		4/23/2020	CJR	1
1,3-Dichloropropane	< 0.025	mg/kg	0.025	0.079	1	8260B		4/23/2020	CJR	1
trans-1,3-Dichloropropene	< 0.022	mg/kg	0.022	0.068	1	8260B		4/23/2020	CJR	1
cis-1,3-Dichloropropene	< 0.039	mg/kg	0.039	0.12	1	8260B		4/23/2020	CJR	1
Di-isopropyl ether	< 0.01	mg/kg	0.01	0.032	1	8260B		4/23/2020	CJR	1
EDB (1,2-Dibromoethane)	< 0.023	mg/kg	0.023	0.072	1	8260B		4/23/2020	CJR	1
Ethylbenzene	< 0.035	mg/kg	0.035	0.11	1	8260B		4/23/2020	CJR	1
Hexachlorobutadiene	< 0.085	mg/kg	0.085	0.27	1	8260B		4/23/2020	CJR	1
Isopropylbenzene	< 0.034	mg/kg	0.034	0.11	1	8260B		4/23/2020	CJR	1
p-Isopropyltoluene	< 0.029	mg/kg	0.029	0.093	1	8260B		4/23/2020	CJR	1
Methylene chloride	< 0.15	mg/kg	0.15	0.46	1	8260B		4/23/2020	CJR	1
Methyl tert-butyl ether (MTBE)	< 0.05	mg/kg	0.05	0.16	1	8260B		4/23/2020	CJR	1
Naphthalene	< 0.094	mg/kg	0.094	0.3	1	8260B		4/23/2020	CJR	1
n-Propylbenzene	< 0.033	mg/kg	0.033	0.1	1	8260B		4/23/2020	CJR	1
1,1,2,2-Tetrachloroethane	< 0.028	mg/kg	0.028	0.88	1	8260B		4/23/2020	CJR	1
1,1,1,2-Tetrachloroethane	< 0.028	mg/kg	0.028	0.09	1	8260B		4/23/2020	CJR	1

**Project Name** PERSHING PLAZA  
**Project #** 1E-1902007

**Invoice #** E37781

**Lab Code** 5037781B  
**Sample ID** B-5 (8-10)  
**Sample Matrix** Soil  
**Sample Date** 4/16/2020

	<b>Result</b>	<b>Unit</b>	<b>LOD</b>	<b>LOQ</b>	<b>Dil</b>	<b>Method</b>	<b>Ext Date</b>	<b>Run Date</b>	<b>Analyst</b>	<b>Code</b>
Tetrachloroethene	< 0.032	mg/kg	0.032	0.1	1	8260B		4/23/2020	CJR	1
Toluene	< 0.032	mg/kg	0.032	0.1	1	8260B		4/23/2020	CJR	1
1,2,4-Trichlorobenzene	< 0.064	mg/kg	0.064	0.2	1	8260B		4/23/2020	CJR	1
1,2,3-Trichlorobenzene	< 0.066	mg/kg	0.066	0.21	1	8260B		4/23/2020	CJR	1
1,1,1-Trichloroethane	< 0.03	mg/kg	0.03	0.96	1	8260B		4/23/2020	CJR	1
1,1,2-Trichloroethane	< 0.033	mg/kg	0.033	0.11	1	8260B		4/23/2020	CJR	1
Trichloroethene (TCE)	< 0.041	mg/kg	0.041	0.13	1	8260B		4/23/2020	CJR	1
Trichlorofluoromethane	< 0.041	mg/kg	0.041	0.13	1	8260B		4/23/2020	CJR	1
1,2,4-Trimethylbenzene	< 0.025	mg/kg	0.025	0.08	1	8260B		4/23/2020	CJR	1
1,3,5-Trimethylbenzene	< 0.032	mg/kg	0.032	0.1	1	8260B		4/23/2020	CJR	1
Vinyl Chloride	< 0.019	mg/kg	0.019	0.062	1	8260B		4/23/2020	CJR	1
m&p-Xylene	< 0.072	mg/kg	0.072	0.23	1	8260B		4/23/2020	CJR	1
o-Xylene	< 0.044	mg/kg	0.044	0.14	1	8260B		4/23/2020	CJR	1
SUR - Dibromofluoromethane	98	Rec %			1	8260B		4/23/2020	CJR	1
SUR - 1,2-Dichloroethane-d4	98	Rec %			1	8260B		4/23/2020	CJR	1
SUR - 4-Bromofluorobenzene	100	Rec %			1	8260B		4/23/2020	CJR	1
SUR - Toluene-d8	103	Rec %			1	8260B		4/23/2020	CJR	1

**Project Name** PERSHING PLAZA  
**Project #** 1E-1902007

**Invoice #** E37781

**Lab Code** 5037781C  
**Sample ID** B-6 (3-4)  
**Sample Matrix** Soil  
**Sample Date** 4/16/2020

	Result	Unit	LOD	LOQ	Dil	Method	Ext Date	Run Date	Analyst	Code
General										
General										
Solids Percent	86.2	%			1	5021		4/20/2020	NJC	1
Organic										
VOC's										
Benzene	< 0.03	mg/kg	0.03	0.096	1	8260B		4/23/2020	CJR	1
Bromobenzene	< 0.025	mg/kg	0.025	0.081	1	8260B		4/23/2020	CJR	1
Bromodichloromethane	< 0.074	mg/kg	0.074	0.24	1	8260B		4/23/2020	CJR	1
Bromoform	< 0.029	mg/kg	0.029	0.092	1	8260B		4/23/2020	CJR	1
tert-Butylbenzene	< 0.026	mg/kg	0.026	0.084	1	8260B		4/23/2020	CJR	1
sec-Butylbenzene	< 0.033	mg/kg	0.033	0.1	1	8260B		4/23/2020	CJR	1
n-Butylbenzene	< 0.04	mg/kg	0.04	0.13	1	8260B		4/23/2020	CJR	1
Carbon Tetrachloride	< 0.016	mg/kg	0.016	0.053	1	8260B		4/23/2020	CJR	1
Chlorobenzene	< 0.013	mg/kg	0.013	0.04	1	8260B		4/23/2020	CJR	1
Chloroethane	< 0.091	mg/kg	0.091	0.29	1	8260B		4/23/2020	CJR	1
Chloroform	< 0.035	mg/kg	0.035	0.11	1	8260B		4/23/2020	CJR	1
Chloromethane	< 0.076	mg/kg	0.076	0.24	1	8260B		4/23/2020	CJR	1
2-Chlorotoluene	< 0.015	mg/kg	0.015	0.047	1	8260B		4/23/2020	CJR	1
4-Chlorotoluene	< 0.018	mg/kg	0.018	0.057	1	8260B		4/23/2020	CJR	1
1,2-Dibromo-3-chloropropane	< 0.058	mg/kg	0.058	0.18	1	8260B		4/23/2020	CJR	1
Dibromochloromethane	< 0.025	mg/kg	0.025	0.079	1	8260B		4/23/2020	CJR	1
1,4-Dichlorobenzene	< 0.037	mg/kg	0.037	0.12	1	8260B		4/23/2020	CJR	1
1,3-Dichlorobenzene	< 0.037	mg/kg	0.037	0.12	1	8260B		4/23/2020	CJR	1
1,2-Dichlorobenzene	< 0.028	mg/kg	0.028	0.088	1	8260B		4/23/2020	CJR	1
Dichlorodifluoromethane	< 0.048	mg/kg	0.048	0.15	1	8260B		4/23/2020	CJR	1
1,2-Dichloroethane	< 0.038	mg/kg	0.038	0.12	1	8260B		4/23/2020	CJR	1
1,1-Dichloroethane	< 0.034	mg/kg	0.034	0.11	1	8260B		4/23/2020	CJR	1
1,1-Dichloroethene	< 0.022	mg/kg	0.022	0.069	1	8260B		4/23/2020	CJR	1
cis-1,2-Dichloroethene	< 0.032	mg/kg	0.032	0.1	1	8260B		4/23/2020	CJR	1
trans-1,2-Dichloroethene	< 0.028	mg/kg	0.028	0.09	1	8260B		4/23/2020	CJR	1
1,2-Dichloropropane	< 0.035	mg/kg	0.035	0.11	1	8260B		4/23/2020	CJR	1
1,3-Dichloropropane	< 0.025	mg/kg	0.025	0.079	1	8260B		4/23/2020	CJR	1
trans-1,3-Dichloropropene	< 0.022	mg/kg	0.022	0.068	1	8260B		4/23/2020	CJR	1
cis-1,3-Dichloropropene	< 0.039	mg/kg	0.039	0.12	1	8260B		4/23/2020	CJR	1
Di-isopropyl ether	< 0.01	mg/kg	0.01	0.032	1	8260B		4/23/2020	CJR	1
EDB (1,2-Dibromoethane)	< 0.023	mg/kg	0.023	0.072	1	8260B		4/23/2020	CJR	1
Ethylbenzene	< 0.035	mg/kg	0.035	0.11	1	8260B		4/23/2020	CJR	1
Hexachlorobutadiene	< 0.085	mg/kg	0.085	0.27	1	8260B		4/23/2020	CJR	1
Isopropylbenzene	< 0.034	mg/kg	0.034	0.11	1	8260B		4/23/2020	CJR	1
p-Isopropyltoluene	< 0.029	mg/kg	0.029	0.093	1	8260B		4/23/2020	CJR	1
Methylene chloride	< 0.15	mg/kg	0.15	0.46	1	8260B		4/23/2020	CJR	1
Methyl tert-butyl ether (MTBE)	< 0.05	mg/kg	0.05	0.16	1	8260B		4/23/2020	CJR	1
Naphthalene	< 0.094	mg/kg	0.094	0.3	1	8260B		4/23/2020	CJR	1
n-Propylbenzene	< 0.033	mg/kg	0.033	0.1	1	8260B		4/23/2020	CJR	1
1,1,2,2-Tetrachloroethane	< 0.028	mg/kg	0.028	0.88	1	8260B		4/23/2020	CJR	1
1,1,1,2-Tetrachloroethane	< 0.028	mg/kg	0.028	0.09	1	8260B		4/23/2020	CJR	1

**Project Name** PERSHING PLAZA  
**Project #** 1E-1902007

**Invoice #** E37781

**Lab Code** 5037781C  
**Sample ID** B-6 (3-4)  
**Sample Matrix** Soil  
**Sample Date** 4/16/2020

	<b>Result</b>	<b>Unit</b>	<b>LOD</b>	<b>LOQ</b>	<b>Dil</b>	<b>Method</b>	<b>Ext Date</b>	<b>Run Date</b>	<b>Analyst</b>	<b>Code</b>
Tetrachloroethene	0.64	mg/kg	0.032	0.1	1	8260B		4/23/2020	CJR	1
Toluene	< 0.032	mg/kg	0.032	0.1	1	8260B		4/23/2020	CJR	1
1,2,4-Trichlorobenzene	< 0.064	mg/kg	0.064	0.2	1	8260B		4/23/2020	CJR	1
1,2,3-Trichlorobenzene	< 0.066	mg/kg	0.066	0.21	1	8260B		4/23/2020	CJR	1
1,1,1-Trichloroethane	< 0.03	mg/kg	0.03	0.96	1	8260B		4/23/2020	CJR	1
1,1,2-Trichloroethane	< 0.033	mg/kg	0.033	0.11	1	8260B		4/23/2020	CJR	1
Trichloroethene (TCE)	< 0.041	mg/kg	0.041	0.13	1	8260B		4/23/2020	CJR	1
Trichlorofluoromethane	< 0.041	mg/kg	0.041	0.13	1	8260B		4/23/2020	CJR	1
1,2,4-Trimethylbenzene	< 0.025	mg/kg	0.025	0.08	1	8260B		4/23/2020	CJR	1
1,3,5-Trimethylbenzene	< 0.032	mg/kg	0.032	0.1	1	8260B		4/23/2020	CJR	1
Vinyl Chloride	< 0.019	mg/kg	0.019	0.062	1	8260B		4/23/2020	CJR	1
m&p-Xylene	< 0.072	mg/kg	0.072	0.23	1	8260B		4/23/2020	CJR	1
o-Xylene	< 0.044	mg/kg	0.044	0.14	1	8260B		4/23/2020	CJR	1
SUR - Toluene-d8	107	Rec %			1	8260B		4/23/2020	CJR	1
SUR - 1,2-Dichloroethane-d4	99	Rec %			1	8260B		4/23/2020	CJR	1
SUR - 4-Bromofluorobenzene	100	Rec %			1	8260B		4/23/2020	CJR	1
SUR - Dibromofluoromethane	99	Rec %			1	8260B		4/23/2020	CJR	1

**Project Name** PERSHING PLAZA  
**Project #** 1E-1902007

**Invoice #** E37781

**Lab Code** 5037781D  
**Sample ID** B-6 (8-10)  
**Sample Matrix** Soil  
**Sample Date** 4/16/2020

	Result	Unit	LOD	LOQ	Dil	Method	Ext Date	Run Date	Analyst	Code
General										
General										
Solids Percent	87.3	%			1	5021		4/20/2020	NJC	1
Organic										
VOC's										
Benzene	< 0.03	mg/kg	0.03	0.096	1	8260B		4/23/2020	CJR	1
Bromobenzene	< 0.025	mg/kg	0.025	0.081	1	8260B		4/23/2020	CJR	1
Bromodichloromethane	< 0.074	mg/kg	0.074	0.24	1	8260B		4/23/2020	CJR	1
Bromoform	< 0.029	mg/kg	0.029	0.092	1	8260B		4/23/2020	CJR	1
tert-Butylbenzene	< 0.026	mg/kg	0.026	0.084	1	8260B		4/23/2020	CJR	1
sec-Butylbenzene	< 0.033	mg/kg	0.033	0.1	1	8260B		4/23/2020	CJR	1
n-Butylbenzene	< 0.04	mg/kg	0.04	0.13	1	8260B		4/23/2020	CJR	1
Carbon Tetrachloride	< 0.016	mg/kg	0.016	0.053	1	8260B		4/23/2020	CJR	1
Chlorobenzene	< 0.013	mg/kg	0.013	0.04	1	8260B		4/23/2020	CJR	1
Chloroethane	< 0.091	mg/kg	0.091	0.29	1	8260B		4/23/2020	CJR	1
Chloroform	< 0.035	mg/kg	0.035	0.11	1	8260B		4/23/2020	CJR	1
Chloromethane	< 0.076	mg/kg	0.076	0.24	1	8260B		4/23/2020	CJR	1
2-Chlorotoluene	< 0.015	mg/kg	0.015	0.047	1	8260B		4/23/2020	CJR	1
4-Chlorotoluene	< 0.018	mg/kg	0.018	0.057	1	8260B		4/23/2020	CJR	1
1,2-Dibromo-3-chloropropane	< 0.058	mg/kg	0.058	0.18	1	8260B		4/23/2020	CJR	1
Dibromochloromethane	< 0.025	mg/kg	0.025	0.079	1	8260B		4/23/2020	CJR	1
1,4-Dichlorobenzene	< 0.037	mg/kg	0.037	0.12	1	8260B		4/23/2020	CJR	1
1,3-Dichlorobenzene	< 0.037	mg/kg	0.037	0.12	1	8260B		4/23/2020	CJR	1
1,2-Dichlorobenzene	< 0.028	mg/kg	0.028	0.088	1	8260B		4/23/2020	CJR	1
Dichlorodifluoromethane	< 0.048	mg/kg	0.048	0.15	1	8260B		4/23/2020	CJR	1
1,2-Dichloroethane	< 0.038	mg/kg	0.038	0.12	1	8260B		4/23/2020	CJR	1
1,1-Dichloroethane	< 0.034	mg/kg	0.034	0.11	1	8260B		4/23/2020	CJR	1
1,1-Dichloroethene	< 0.022	mg/kg	0.022	0.069	1	8260B		4/23/2020	CJR	1
cis-1,2-Dichloroethene	< 0.032	mg/kg	0.032	0.1	1	8260B		4/23/2020	CJR	1
trans-1,2-Dichloroethene	< 0.028	mg/kg	0.028	0.09	1	8260B		4/23/2020	CJR	1
1,2-Dichloropropane	< 0.035	mg/kg	0.035	0.11	1	8260B		4/23/2020	CJR	1
1,3-Dichloropropane	< 0.025	mg/kg	0.025	0.079	1	8260B		4/23/2020	CJR	1
trans-1,3-Dichloropropene	< 0.022	mg/kg	0.022	0.068	1	8260B		4/23/2020	CJR	1
cis-1,3-Dichloropropene	< 0.039	mg/kg	0.039	0.12	1	8260B		4/23/2020	CJR	1
Di-isopropyl ether	< 0.01	mg/kg	0.01	0.032	1	8260B		4/23/2020	CJR	1
EDB (1,2-Dibromoethane)	< 0.023	mg/kg	0.023	0.072	1	8260B		4/23/2020	CJR	1
Ethylbenzene	< 0.035	mg/kg	0.035	0.11	1	8260B		4/23/2020	CJR	1
Hexachlorobutadiene	< 0.085	mg/kg	0.085	0.27	1	8260B		4/23/2020	CJR	1
Isopropylbenzene	< 0.034	mg/kg	0.034	0.11	1	8260B		4/23/2020	CJR	1
p-Isopropyltoluene	< 0.029	mg/kg	0.029	0.093	1	8260B		4/23/2020	CJR	1
Methylene chloride	< 0.15	mg/kg	0.15	0.46	1	8260B		4/23/2020	CJR	1
Methyl tert-butyl ether (MTBE)	< 0.05	mg/kg	0.05	0.16	1	8260B		4/23/2020	CJR	1
Naphthalene	< 0.094	mg/kg	0.094	0.3	1	8260B		4/23/2020	CJR	1
n-Propylbenzene	< 0.033	mg/kg	0.033	0.1	1	8260B		4/23/2020	CJR	1
1,1,2,2-Tetrachloroethane	< 0.028	mg/kg	0.028	0.88	1	8260B		4/23/2020	CJR	1
1,1,1,2-Tetrachloroethane	< 0.028	mg/kg	0.028	0.09	1	8260B		4/23/2020	CJR	1



**Project Name** PERSHING PLAZA  
**Project #** 1E-1902007

**Invoice #** E37781

**Lab Code** 5037781D  
**Sample ID** B-6 (8-10)  
**Sample Matrix** Soil  
**Sample Date** 4/16/2020

	Result	Unit	LOD	LOQ	Dil	Method	Ext Date	Run Date	Analyst	Code
Tetrachloroethene	< 0.032	mg/kg	0.032	0.1	1	8260B		4/23/2020	CJR	1
Toluene	< 0.032	mg/kg	0.032	0.1	1	8260B		4/23/2020	CJR	1
1,2,4-Trichlorobenzene	< 0.064	mg/kg	0.064	0.2	1	8260B		4/23/2020	CJR	1
1,2,3-Trichlorobenzene	< 0.066	mg/kg	0.066	0.21	1	8260B		4/23/2020	CJR	1
1,1,1-Trichloroethane	< 0.03	mg/kg	0.03	0.96	1	8260B		4/23/2020	CJR	1
1,1,2-Trichloroethane	< 0.033	mg/kg	0.033	0.11	1	8260B		4/23/2020	CJR	1
Trichloroethene (TCE)	< 0.041	mg/kg	0.041	0.13	1	8260B		4/23/2020	CJR	1
Trichlorofluoromethane	< 0.041	mg/kg	0.041	0.13	1	8260B		4/23/2020	CJR	1
1,2,4-Trimethylbenzene	< 0.025	mg/kg	0.025	0.08	1	8260B		4/23/2020	CJR	1
1,3,5-Trimethylbenzene	< 0.032	mg/kg	0.032	0.1	1	8260B		4/23/2020	CJR	1
Vinyl Chloride	< 0.019	mg/kg	0.019	0.062	1	8260B		4/23/2020	CJR	1
m&p-Xylene	< 0.072	mg/kg	0.072	0.23	1	8260B		4/23/2020	CJR	1
o-Xylene	< 0.044	mg/kg	0.044	0.14	1	8260B		4/23/2020	CJR	1
SUR - Toluene-d8	106	Rec %			1	8260B		4/23/2020	CJR	1
SUR - 1,2-Dichloroethane-d4	97	Rec %			1	8260B		4/23/2020	CJR	1
SUR - 4-Bromofluorobenzene	99	Rec %			1	8260B		4/23/2020	CJR	1
SUR - Dibromofluoromethane	101	Rec %			1	8260B		4/23/2020	CJR	1

"J" Flag: Analyte detected between LOD and LOQ

LOD Limit of Detection

LOQ Limit of Quantitation

**Code**      **Comment**

1      Laboratory QC within limits.

All solid sample results reported on a dry weight basis unless otherwise indicated. All LOD's and LOQ's are adjusted for dilutions but not dry weight. Subcontracted results are denoted by SUB in the analyst field.

**Authorized Signature**



## Environmental Lab, Inc.

www.synergy-lab.net  
 1990 Prospect Ct. • Appleton, WI 54914  
 920-830-2455 • mrsynergy@wi.twcabc.com

### Sample Handling Request

Rush Analysis Date Required: \_\_\_\_\_  
 (Rushes accepted only with prior authorization)

Normal Turn Around

Lab I.D. # \_\_\_\_\_  
 QUOTE # : \_\_\_\_\_  
 Project #: 1E-1902007  
 Sampler: (signature) *[Signature]*

Project (Name / Location): *Fishing Plaza - Kenosha, WI.*

Reports To: <i>Steve Owens</i>	Invoice To:
Company: <i>Giles Engineering</i>	Company:
Address: <i>N8 W22350 Johnson Dr.</i>	Address:
City State Zip: <i>Kenosha WI</i>	City State Zip:
Phone: <i>262.544.0118</i>	Phone:
Email: <i>sowense@gilesengr.com</i>	Email:

### Analysis Requested

### Other Analysis

Lab I.D.	Sample I.D.	Collection		Filtered Y/N	No. of Containers	Sample Type (Matrix)*	Preservation	DRO (Mod DRO Sep 95)	GRO (Mod GRO Sep 95)	LEAD	NITRATE/NITRITE	OIL & GREASE	PAH (EPA 8270)	PCB	PVOC (EPA 8021)	PVOC + NAPHTHALENE	SULFATE	TOTAL SUSPENDED SOLIDS	VOC DW (EPA 524.2)	VOC (EPA 8260)	VOC AIR (TO - 15)	8-PCRA METALS	PID/ FID	
		Date	Time																					
5037781A	B-5 (3-4)	4/16/20	1442	N	2	S	cool																	
B	B-5 (8-10)	4/16/20	1454	N	2	S	cool																	
C	B-6 (3-4)	4/16/20	1256	N	2	S	cool																	
D	B-6 (8-10)	4/16/20	1306	N	2	S	cool																	

Comments/Special Instructions (\*Specify groundwater "GW", Drinking Water "DW", Waste Water "WW", Soil "S", Air "A", Oil, Sludge, etc.)

*Email results to: jwolska@gilesengr.com & sowense@gilesengr.com*

Sample Integrity - To be completed by receiving lab.

Method of Shipment: GC

Temp. of Temp. Blank: \_\_\_\_\_ °C On Ice:

Cooler seal intact upon receipt:  Yes  No

Relinquished By: (sign)

*[Signature]*

Time

*12:30*

Date

*4/17/20*

Received By: (sign)

*[Signature]*

Time

*17:21*

Date

*4/17/20*

Received in Laboratory By:

*[Signature]*

Time: *10:00*

Date: *4/18/20*

# Synergy Environmental Lab, INC

1990 Prospect Ct., Appleton, WI 54914 \*P 920-830-2455 \* F 920-733-0631

STEVE OWENS  
GILES ENGINEERING  
N8 W22350 JOHNSON DRIVE  
WAUKESHA, WI 53186

Report Date 30-Apr-20

Project Name PERSHING PLAZA  
Project # 1E-1902007

Invoice # E37782

Lab Code 5037782A  
Sample ID VP-2  
Sample Matrix Air  
Sample Date 4/16/2020

	Result	Unit	LOD	LOQ	Dil	Method	Ext Date	Run Date	Analyst	Code
Organic										
Air Samples										
1,2-Dichloroethane	< 0.24	ug/m3	0.24	0.763	1	TO-15		4/28/2020	CJR	1
1,1-Dichloroethene	< 0.21	ug/m3	0.21	0.667	1	TO-15		4/28/2020	CJR	1
cis-1,2-Dichloroethene	< 0.197	ug/m3	0.197	0.626	1	TO-15		4/28/2020	CJR	1
trans-1,2-Dichloroethene	< 0.231	ug/m3	0.231	0.734	1	TO-15		4/28/2020	CJR	1
Tetrachloroethene	1000	ug/m3	2.78	8.84	10	TO-15		4/29/2020	CJR	1
Trichloroethene (TCE)	0.43 "J"	ug/m3	0.237	0.754	1	TO-15		4/28/2020	CJR	1
Vinyl Chloride	< 0.148	ug/m3	0.148	0.472	1	TO-15		4/28/2020	CJR	1

Lab Code 5037782B  
Sample ID VP-3  
Sample Matrix Air  
Sample Date 4/16/2020

	Result	Unit	LOD	LOQ	Dil	Method	Ext Date	Run Date	Analyst	Code
Organic										
Air Samples										
1,2-Dichloroethane	< 0.24	ug/m3	0.24	0.763	1	TO-15		4/28/2020	CJR	1
1,1-Dichloroethene	< 0.21	ug/m3	0.21	0.667	1	TO-15		4/28/2020	CJR	1
cis-1,2-Dichloroethene	< 0.197	ug/m3	0.197	0.626	1	TO-15		4/28/2020	CJR	1
trans-1,2-Dichloroethene	1.35	ug/m3	0.231	0.734	1	TO-15		4/28/2020	CJR	1
Tetrachloroethene	217000	ug/m3	695	2210	2500	TO-15		4/29/2020	CJR	1
Trichloroethene (TCE)	970	ug/m3	23.7	75.4	100	TO-15		4/29/2020	CJR	1
Vinyl Chloride	< 0.148	ug/m3	0.148	0.472	1	TO-15		4/28/2020	CJR	1

Project Name PERSHING PLAZA  
Project # 1E-1902007

Invoice # E37782

Lab Code 5037782C  
Sample ID VP-4  
Sample Matrix Air  
Sample Date 4/16/2020

	Result	Unit	LOD	LOQ	Dil	Method	Ext Date	Run Date	Analyst	Code
Organic										
Air Samples										
1,2-Dichloroethane	< 0.24	ug/m3	0.24	0.763	1	TO-15		4/28/2020	CJR	1
1,1-Dichloroethene	< 0.21	ug/m3	0.21	0.667	1	TO-15		4/28/2020	CJR	1
cis-1,2-Dichloroethene	< 0.197	ug/m3	0.197	0.626	1	TO-15		4/28/2020	CJR	1
trans-1,2-Dichloroethene	< 0.231	ug/m3	0.231	0.734	1	TO-15		4/28/2020	CJR	1
Tetrachloroethene	82	ug/m3	0.278	0.884	1	TO-15		4/29/2020	CJR	1
Trichloroethene (TCE)	< 0.237	ug/m3	0.237	0.754	1	TO-15		4/28/2020	CJR	1
Vinyl Chloride	< 0.148	ug/m3	0.148	0.472	1	TO-15		4/28/2020	CJR	1

"J" Flag: Analyte detected between LOD and LOQ

LOD Limit of Detection

LOQ Limit of Quantitation

Code	Comment
1	Laboratory QC within limits.

All solid sample results reported on a dry weight basis unless otherwise indicated. All LOD's and LOQ's are adjusted for dilutions but not dry weight. Subcontracted results are denoted by SUB in the analyst field.

Authorized Signature





## Environmental Lab, Inc.

www.synergy-lab.net  
 1990 Prospect Ct. • Appleton, WI 54914  
 920-830-2455 • mrsynergy@wi.twcbc.com

### Sample Handling Request

Rush Analysis Date Required: \_\_\_\_\_  
 (Rushes accepted only with prior authorization)  
 Normal Turn Around

Lab I.D. # \_\_\_\_\_  
 QUOTE # : \_\_\_\_\_  
 Project #: 1E-1902007  
 Sampler: (signature) [Signature]

Project (Name / Location): Pershing Plaza Kenosha, WI  
 Reports To: Steve Owens Invoice To: \_\_\_\_\_  
 Company: Giles Engineering Company: \_\_\_\_\_  
 Address: N 8 W22350 Johnson Dr Address: \_\_\_\_\_  
 City State Zip: Waukesha, WI City State Zip: \_\_\_\_\_  
 Phone: 262-544-0118 Phone: \_\_\_\_\_  
 Email: sowers@gilesengr.com Email: \_\_\_\_\_

Analysis Requested										Other Analysis					
DRO (Mod DRO Sep 95)	GRO (Mod GRO Sep 95)	LEAD	NITRATE/NITRITE	OIL & GREASE	PAH (EPA 8270)	PCB	PVOC (EPA 8021)	PVOC + NAPHTHALENE	SULFATE	TOTAL SUSPENDED SOLIDS	VOC DW (EPA 524.2)	VOC (EPA 8260)	VOC AIR (TO - 15) See List	8-PCRA METALS	PID/FID
													X		
													X		
													X		

Lab I.D.	Sample I.D.	Collection Date	Time	Filtered Y/N	No. of Containers	Sample Type (Matrix)*	Preservation
<u>5037782A</u>	<u>VP-2</u>	<u>4/16/20</u>		<u>N</u>	<u>1</u>	<u>Sub-slab</u>	<u>-</u>
<u>B</u>	<u>VP-3</u>	<u>4/16/20</u>		<u>N</u>	<u>1</u>	<u>Sub-slab</u>	<u>-</u>
<u>C</u>	<u>VP-4</u>	<u>4/16/20</u>		<u>N</u>	<u>1</u>	<u>Sub-slab</u>	<u>-</u>

Comments/Special Instructions (\*Specify groundwater "GW", Drinking Water "DW", Waste Water "WW", Soil "S", Air "A", Oil, Sludge, etc.)  
Analyze TO-15 For: PCE, TCE, Cis-1,2-DCE, Trans-1,2-DCE, 1,1-DCE, 1,2-DCA, Vinyl Chloride  
email results to: sowers@gilesengr.com & jwoolste@gilesengr.com

Sample Integrity - To be completed by receiving lab.  
 Method of Shipment: GC  
 Temp. of Temp. Blank: \_\_\_\_\_ °C On Ice: \_\_\_\_\_  
 Cooler seal intact upon receipt:  Yes  No

Relinquished By: (sign) [Signature] Time 1220 Date 4/17/2020  
 Received By: (sign) [Signature] Time 1220 Date 4/17/20  
 Received in Laboratory By: [Signature] Time: 10:00 Date: 4/18/20

# Synergy Environmental Lab, INC

1990 Prospect Ct., Appleton, WI 54914 \*P 920-830-2455 \* F 920-733-0631

STEVE OWENS  
GILES ENGINEERING  
N8 W22350 JOHNSON DRIVE  
WAUKESHA, WI 53186

Report Date 13-May-20

Project Name PERSHING PLAZA  
Project # 1E-1902007

Invoice # E37883

Lab Code 5037883A  
Sample ID MW-1  
Sample Matrix Water  
Sample Date 5/7/2020

	Result	Unit	LOD	LOQ	Dil	Method	Ext Date	Run Date	Analyst	Code
Organic										
VOC's										
Benzene	< 0.33	ug/l	0.33		1	8260B		5/13/2020	CJR	1
Bromobenzene	< 0.26	ug/l	0.26	0.84	1	8260B		5/13/2020	CJR	1
Bromodichloromethane	< 0.33	ug/l	0.33		1	8260B		5/13/2020	CJR	1
Bromoform	< 0.65	ug/l	0.65	2.1	1	8260B		5/13/2020	CJR	1
tert-Butylbenzene	< 0.61	ug/l	0.61	1.9	1	8260B		5/13/2020	CJR	1
sec-Butylbenzene	< 0.32	ug/l	0.32		1	8260B		5/13/2020	CJR	1
n-Butylbenzene	< 0.28	ug/l	0.28	0.89	1	8260B		5/13/2020	CJR	1
Carbon Tetrachloride	< 0.31	ug/l	0.31	0.98	1	8260B		5/13/2020	CJR	1
Chlorobenzene	< 0.39	ug/l	0.39	1.2	1	8260B		5/13/2020	CJR	1
Chloroethane	< 1.1	ug/l	1.1	3.6	1	8260B		5/13/2020	CJR	1
Chloroform	< 0.44	ug/l	0.44	1.4	1	8260B		5/13/2020	CJR	1
Chloromethane	< 0.8	ug/l	0.8	2.5	1	8260B		5/13/2020	CJR	1
2-Chlorotoluene	< 0.32	ug/l	0.32		1	8260B		5/13/2020	CJR	1
4-Chlorotoluene	< 0.3	ug/l	0.3	0.96	1	8260B		5/13/2020	CJR	1
1,2-Dibromo-3-chloropropane	< 0.82	ug/l	0.82	2.6	1	8260B		5/13/2020	CJR	1
Dibromochloromethane	< 0.23	ug/l	0.23	0.74	1	8260B		5/13/2020	CJR	1
1,4-Dichlorobenzene	< 0.36	ug/l	0.36	1.1	1	8260B		5/13/2020	CJR	1
1,3-Dichlorobenzene	< 0.31	ug/l	0.31	0.98	1	8260B		5/13/2020	CJR	1
1,2-Dichlorobenzene	< 0.32	ug/l	0.32		1	8260B		5/13/2020	CJR	1
Dichlorodifluoromethane	< 0.45	ug/l	0.45	1.4	1	8260B		5/13/2020	CJR	1
1,2-Dichloroethane	< 0.39	ug/l	0.39	1.3	1	8260B		5/13/2020	CJR	1
1,1-Dichloroethane	< 0.46	ug/l	0.46	1.5	1	8260B		5/13/2020	CJR	1
1,1-Dichloroethene	< 0.5	ug/l	0.5	1.6	1	8260B		5/13/2020	CJR	1
cis-1,2-Dichloroethene	0.44 "J"	ug/l	0.39	1.2	1	8260B		5/13/2020	CJR	1
trans-1,2-Dichloroethene	< 0.37	ug/l	0.37	1.2	1	8260B		5/13/2020	CJR	1

**Project Name** PERSHING PLAZA  
**Project #** 1E-1902007

**Invoice #** E37883

**Lab Code** 5037883A  
**Sample ID** MW-1  
**Sample Matrix** Water  
**Sample Date** 5/7/2020

	Result	Unit	LOD	LOQ	Dil	Method	Ext Date	Run Date	Analyst	Code
1,2-Dichloropropane	< 0.38	ug/l	0.38	1.2	1	8260B		5/13/2020	CJR	1
1,3-Dichloropropane	< 0.35	ug/l	0.35	1.1	1	8260B		5/13/2020	CJR	1
trans-1,3-Dichloropropene	< 0.3	ug/l	0.3	0.94	1	8260B		5/13/2020	CJR	1
cis-1,3-Dichloropropene	< 0.36	ug/l	0.36	1.1	1	8260B		5/13/2020	CJR	1
Di-isopropyl ether	< 0.34	ug/l	0.34	1.1	1	8260B		5/13/2020	CJR	1
EDB (1,2-Dibromoethane)	< 0.24	ug/l	0.24	0.75	1	8260B		5/13/2020	CJR	1
Ethylbenzene	< 0.32	ug/l	0.32	1	1	8260B		5/13/2020	CJR	1
Hexachlorobutadiene	< 0.72	ug/l	0.72	2.3	1	8260B		5/13/2020	CJR	1
Isopropylbenzene	< 0.32	ug/l	0.32	1	1	8260B		5/13/2020	CJR	1
p-Isopropyltoluene	< 0.47	ug/l	0.47	1.5	1	8260B		5/13/2020	CJR	1
Methylene chloride	< 1.32	ug/l	1.32	4.21	1	8260B		5/13/2020	CJR	1
Methyl tert-butyl ether (MTBE)	< 0.47	ug/l	0.47	1.5	1	8260B		5/13/2020	CJR	1
Naphthalene	< 1.1	ug/l	1.1	3.6	1	8260B		5/13/2020	CJR	1
n-Propylbenzene	< 0.33	ug/l	0.33	1.1	1	8260B		5/13/2020	CJR	1
1,1,2,2-Tetrachloroethane	< 0.37	ug/l	0.37	1.2	1	8260B		5/13/2020	CJR	1
1,1,1,2-Tetrachloroethane	< 0.88	ug/l	0.88	3.3	1	8260B		5/13/2020	CJR	1
Tetrachloroethene	1.37	ug/l	0.33	1	1	8260B		5/13/2020	CJR	1
Toluene	< 0.26	ug/l	0.26	0.83	1	8260B		5/13/2020	CJR	1
1,2,4-Trichlorobenzene	< 0.44	ug/l	0.44	1.4	1	8260B		5/13/2020	CJR	1
1,2,3-Trichlorobenzene	< 1	ug/l	1	3.2	1	8260B		5/13/2020	CJR	1
1,1,1-Trichloroethane	< 0.3	ug/l	0.3	0.95	1	8260B		5/13/2020	CJR	1
1,1,2-Trichloroethane	< 0.36	ug/l	0.36	1.1	1	8260B		5/13/2020	CJR	1
Trichloroethene (TCE)	1.54	ug/l	0.47	1.5	1	8260B		5/13/2020	CJR	1
Trichlorofluoromethane	< 0.42	ug/l	0.42	1.3	1	8260B		5/13/2020	CJR	1
1,2,4-Trimethylbenzene	< 0.3	ug/l	0.3	0.96	1	8260B		5/13/2020	CJR	1
1,3,5-Trimethylbenzene	< 0.32	ug/l	0.32	1	1	8260B		5/13/2020	CJR	1
Vinyl Chloride	< 0.2	ug/l	0.2	0.65	1	8260B		5/13/2020	CJR	1
m&p-Xylene	< 1.1	ug/l	1.1	3.3	1	8260B		5/13/2020	CJR	1
o-Xylene	< 0.38	ug/l	0.38	1.2	1	8260B		5/13/2020	CJR	1
SUR - Toluene-d8	96	REC %			1	8260B		5/13/2020	CJR	1
SUR - Dibromofluoromethane	111	REC %			1	8260B		5/13/2020	CJR	1
SUR - 4-Bromofluorobenzene	91	REC %			1	8260B		5/13/2020	CJR	1
SUR - 1,2-Dichloroethane-d4	108	REC %			1	8260B		5/13/2020	CJR	1

Project Name PERSHING PLAZA  
Project # 1E-1902007

Invoice # E37883

Lab Code 5037883B  
Sample ID MW-2  
Sample Matrix Water  
Sample Date 5/7/2020

	Result	Unit	LOD	LOQ	Dil	Method	Ext Date	Run Date	Analyst	Code
Organic										
VOC's										
Benzene	< 0.33	ug/l	0.33	1	1	8260B		5/13/2020	CJR	1
Bromobenzene	< 0.26	ug/l	0.26	0.84	1	8260B		5/13/2020	CJR	1
Bromodichloromethane	< 0.33	ug/l	0.33	1	1	8260B		5/13/2020	CJR	1
Bromoform	< 0.65	ug/l	0.65	2.1	1	8260B		5/13/2020	CJR	1
tert-Butylbenzene	< 0.61	ug/l	0.61	1.9	1	8260B		5/13/2020	CJR	1
sec-Butylbenzene	< 0.32	ug/l	0.32	1	1	8260B		5/13/2020	CJR	1
n-Butylbenzene	< 0.28	ug/l	0.28	0.89	1	8260B		5/13/2020	CJR	1
Carbon Tetrachloride	< 0.31	ug/l	0.31	0.98	1	8260B		5/13/2020	CJR	1
Chlorobenzene	< 0.39	ug/l	0.39	1.2	1	8260B		5/13/2020	CJR	1
Chloroethane	< 1.1	ug/l	1.1	3.6	1	8260B		5/13/2020	CJR	1
Chloroform	< 0.44	ug/l	0.44	1.4	1	8260B		5/13/2020	CJR	1
Chloromethane	< 0.8	ug/l	0.8	2.5	1	8260B		5/13/2020	CJR	1
2-Chlorotoluene	< 0.32	ug/l	0.32	1	1	8260B		5/13/2020	CJR	1
4-Chlorotoluene	< 0.3	ug/l	0.3	0.96	1	8260B		5/13/2020	CJR	1
1,2-Dibromo-3-chloropropane	< 0.82	ug/l	0.82	2.6	1	8260B		5/13/2020	CJR	1
Dibromochloromethane	< 0.23	ug/l	0.23	0.74	1	8260B		5/13/2020	CJR	1
1,4-Dichlorobenzene	< 0.36	ug/l	0.36	1.1	1	8260B		5/13/2020	CJR	1
1,3-Dichlorobenzene	< 0.31	ug/l	0.31	0.98	1	8260B		5/13/2020	CJR	1
1,2-Dichlorobenzene	< 0.32	ug/l	0.32	1	1	8260B		5/13/2020	CJR	1
Dichlorodifluoromethane	< 0.45	ug/l	0.45	1.4	1	8260B		5/13/2020	CJR	1
1,2-Dichloroethane	< 0.39	ug/l	0.39	1.3	1	8260B		5/13/2020	CJR	1
1,1-Dichloroethane	< 0.46	ug/l	0.46	1.5	1	8260B		5/13/2020	CJR	1
1,1-Dichloroethene	< 0.5	ug/l	0.5	1.6	1	8260B		5/13/2020	CJR	1
cis-1,2-Dichloroethene	< 0.39	ug/l	0.39	1.2	1	8260B		5/13/2020	CJR	1
trans-1,2-Dichloroethene	< 0.37	ug/l	0.37	1.2	1	8260B		5/13/2020	CJR	1
1,2-Dichloropropane	< 0.38	ug/l	0.38	1.2	1	8260B		5/13/2020	CJR	1
1,3-Dichloropropane	< 0.35	ug/l	0.35	1.1	1	8260B		5/13/2020	CJR	1
trans-1,3-Dichloropropene	< 0.3	ug/l	0.3	0.94	1	8260B		5/13/2020	CJR	1
cis-1,3-Dichloropropene	< 0.36	ug/l	0.36	1.1	1	8260B		5/13/2020	CJR	1
Di-isopropyl ether	< 0.34	ug/l	0.34	1.1	1	8260B		5/13/2020	CJR	1
EDB (1,2-Dibromoethane)	< 0.24	ug/l	0.24	0.75	1	8260B		5/13/2020	CJR	1
Ethylbenzene	< 0.32	ug/l	0.32	1	1	8260B		5/13/2020	CJR	1
Hexachlorobutadiene	< 0.72	ug/l	0.72	2.3	1	8260B		5/13/2020	CJR	1
Isopropylbenzene	< 0.32	ug/l	0.32	1	1	8260B		5/13/2020	CJR	1
p-Isopropyltoluene	< 0.47	ug/l	0.47	1.5	1	8260B		5/13/2020	CJR	1
Methylene chloride	< 1.32	ug/l	1.32	4.21	1	8260B		5/13/2020	CJR	1
Methyl tert-butyl ether (MTBE)	< 0.47	ug/l	0.47	1.5	1	8260B		5/13/2020	CJR	1
Naphthalene	< 1.1	ug/l	1.1	3.6	1	8260B		5/13/2020	CJR	1
n-Propylbenzene	< 0.33	ug/l	0.33	1.1	1	8260B		5/13/2020	CJR	1
1,1,2,2-Tetrachloroethane	< 0.37	ug/l	0.37	1.2	1	8260B		5/13/2020	CJR	1
1,1,1,2-Tetrachloroethane	< 0.88	ug/l	0.88	3.3	1	8260B		5/13/2020	CJR	1
Tetrachloroethene	< 0.33	ug/l	0.33	1	1	8260B		5/13/2020	CJR	1
Toluene	< 0.26	ug/l	0.26	0.83	1	8260B		5/13/2020	CJR	1
1,2,4-Trichlorobenzene	< 0.44	ug/l	0.44	1.4	1	8260B		5/13/2020	CJR	1



**Project Name** PERSHING PLAZA  
**Project #** 1E-1902007

**Invoice #** E37883

**Lab Code** 5037883B  
**Sample ID** MW-2  
**Sample Matrix** Water  
**Sample Date** 5/7/2020

	<b>Result</b>	<b>Unit</b>	<b>LOD</b>	<b>LOQ</b>	<b>Dil</b>	<b>Method</b>	<b>Ext Date</b>	<b>Run Date</b>	<b>Analyst</b>	<b>Code</b>
1,2,3-Trichlorobenzene	< 1	ug/l	1	3.2	1	8260B		5/13/2020	CJR	1
1,1,1-Trichloroethane	< 0.3	ug/l	0.3	0.95	1	8260B		5/13/2020	CJR	1
1,1,2-Trichloroethane	< 0.36	ug/l	0.36	1.1	1	8260B		5/13/2020	CJR	1
Trichloroethene (TCE)	< 0.47	ug/l	0.47	1.5	1	8260B		5/13/2020	CJR	1
Trichlorofluoromethane	< 0.42	ug/l	0.42	1.3	1	8260B		5/13/2020	CJR	1
1,2,4-Trimethylbenzene	< 0.3	ug/l	0.3	0.96	1	8260B		5/13/2020	CJR	1
1,3,5-Trimethylbenzene	< 0.32	ug/l	0.32	1	1	8260B		5/13/2020	CJR	1
Vinyl Chloride	< 0.2	ug/l	0.2	0.65	1	8260B		5/13/2020	CJR	1
m&p-Xylene	< 1.1	ug/l	1.1	3.3	1	8260B		5/13/2020	CJR	1
o-Xylene	< 0.38	ug/l	0.38	1.2	1	8260B		5/13/2020	CJR	1
SUR - 1,2-Dichloroethane-d4	104	REC %			1	8260B		5/13/2020	CJR	1
SUR - 4-Bromofluorobenzene	92	REC %			1	8260B		5/13/2020	CJR	1
SUR - Dibromofluoromethane	106	REC %			1	8260B		5/13/2020	CJR	1
SUR - Toluene-d8	92	REC %			1	8260B		5/13/2020	CJR	1

**Project Name** PERSHING PLAZA  
**Project #** 1E-1902007

**Invoice #** E37883

**Lab Code** 5037883C  
**Sample ID** MW-3  
**Sample Matrix** Water  
**Sample Date** 5/7/2020

	Result	Unit	LOD	LOQ	Dil	Method	Ext Date	Run Date	Analyst	Code
Organic										
VOC's										
Benzene	< 0.33	ug/l	0.33		1	8260B		5/13/2020	CJR	1
Bromobenzene	< 0.26	ug/l	0.26	0.84	1	8260B		5/13/2020	CJR	1
Bromodichloromethane	< 0.33	ug/l	0.33		1	8260B		5/13/2020	CJR	1
Bromoform	< 0.65	ug/l	0.65	2.1	1	8260B		5/13/2020	CJR	1
tert-Butylbenzene	< 0.61	ug/l	0.61	1.9	1	8260B		5/13/2020	CJR	1
sec-Butylbenzene	< 0.32	ug/l	0.32		1	8260B		5/13/2020	CJR	1
n-Butylbenzene	< 0.28	ug/l	0.28	0.89	1	8260B		5/13/2020	CJR	1
Carbon Tetrachloride	< 0.31	ug/l	0.31	0.98	1	8260B		5/13/2020	CJR	1
Chlorobenzene	< 0.39	ug/l	0.39	1.2	1	8260B		5/13/2020	CJR	1
Chloroethane	< 1.1	ug/l	1.1	3.6	1	8260B		5/13/2020	CJR	1
Chloroform	< 0.44	ug/l	0.44	1.4	1	8260B		5/13/2020	CJR	1
Chloromethane	< 0.8	ug/l	0.8	2.5	1	8260B		5/13/2020	CJR	1
2-Chlorotoluene	< 0.32	ug/l	0.32		1	8260B		5/13/2020	CJR	1
4-Chlorotoluene	< 0.3	ug/l	0.3	0.96	1	8260B		5/13/2020	CJR	1
1,2-Dibromo-3-chloropropane	< 0.82	ug/l	0.82	2.6	1	8260B		5/13/2020	CJR	1
Dibromochloromethane	< 0.23	ug/l	0.23	0.74	1	8260B		5/13/2020	CJR	1
1,4-Dichlorobenzene	< 0.36	ug/l	0.36	1.1	1	8260B		5/13/2020	CJR	1
1,3-Dichlorobenzene	< 0.31	ug/l	0.31	0.98	1	8260B		5/13/2020	CJR	1
1,2-Dichlorobenzene	< 0.32	ug/l	0.32		1	8260B		5/13/2020	CJR	1
Dichlorodifluoromethane	< 0.45	ug/l	0.45	1.4	1	8260B		5/13/2020	CJR	1
1,2-Dichloroethane	< 0.39	ug/l	0.39	1.3	1	8260B		5/13/2020	CJR	1
1,1-Dichloroethane	< 0.46	ug/l	0.46	1.5	1	8260B		5/13/2020	CJR	1
1,1-Dichloroethene	< 0.5	ug/l	0.5	1.6	1	8260B		5/13/2020	CJR	1
cis-1,2-Dichloroethene	< 0.39	ug/l	0.39	1.2	1	8260B		5/13/2020	CJR	1
trans-1,2-Dichloroethene	< 0.37	ug/l	0.37	1.2	1	8260B		5/13/2020	CJR	1
1,2-Dichloropropane	< 0.38	ug/l	0.38	1.2	1	8260B		5/13/2020	CJR	1
1,3-Dichloropropane	< 0.35	ug/l	0.35	1.1	1	8260B		5/13/2020	CJR	1
trans-1,3-Dichloropropene	< 0.3	ug/l	0.3	0.94	1	8260B		5/13/2020	CJR	1
cis-1,3-Dichloropropene	< 0.36	ug/l	0.36	1.1	1	8260B		5/13/2020	CJR	1
Di-isopropyl ether	< 0.34	ug/l	0.34	1.1	1	8260B		5/13/2020	CJR	1
EDB (1,2-Dibromoethane)	< 0.24	ug/l	0.24	0.75	1	8260B		5/13/2020	CJR	1
Ethylbenzene	< 0.32	ug/l	0.32		1	8260B		5/13/2020	CJR	1
Hexachlorobutadiene	< 0.72	ug/l	0.72	2.3	1	8260B		5/13/2020	CJR	1
Isopropylbenzene	< 0.32	ug/l	0.32		1	8260B		5/13/2020	CJR	1
p-Isopropyltoluene	< 0.47	ug/l	0.47	1.5	1	8260B		5/13/2020	CJR	1
Methylene chloride	< 1.32	ug/l	1.32	4.21	1	8260B		5/13/2020	CJR	1
Methyl tert-butyl ether (MTBE)	< 0.47	ug/l	0.47	1.5	1	8260B		5/13/2020	CJR	1
Naphthalene	< 1.1	ug/l	1.1	3.6	1	8260B		5/13/2020	CJR	1
n-Propylbenzene	< 0.33	ug/l	0.33	1.1	1	8260B		5/13/2020	CJR	1
1,1,2,2-Tetrachloroethane	< 0.37	ug/l	0.37	1.2	1	8260B		5/13/2020	CJR	1
1,1,1,2-Tetrachloroethane	< 0.88	ug/l	0.88	3.3	1	8260B		5/13/2020	CJR	1
Tetrachloroethene	< 0.33	ug/l	0.33		1	8260B		5/13/2020	CJR	1
Toluene	< 0.26	ug/l	0.26	0.83	1	8260B		5/13/2020	CJR	1
1,2,4-Trichlorobenzene	< 0.44	ug/l	0.44	1.4	1	8260B		5/13/2020	CJR	1

**Project Name** PERSHING PLAZA  
**Project #** 1E-1902007

**Invoice #** E37883

**Lab Code** 5037883C  
**Sample ID** MW-3  
**Sample Matrix** Water  
**Sample Date** 5/7/2020

	<b>Result</b>	<b>Unit</b>	<b>LOD</b>	<b>LOQ</b>	<b>Dil</b>	<b>Method</b>	<b>Ext Date</b>	<b>Run Date</b>	<b>Analyst</b>	<b>Code</b>
1,2,3-Trichlorobenzene	< 1	ug/l	1	3.2	1	8260B		5/13/2020	CJR	1
1,1,1-Trichloroethane	< 0.3	ug/l	0.3	0.95	1	8260B		5/13/2020	CJR	1
1,1,2-Trichloroethane	< 0.36	ug/l	0.36	1.1	1	8260B		5/13/2020	CJR	1
Trichloroethene (TCE)	< 0.47	ug/l	0.47	1.5	1	8260B		5/13/2020	CJR	1
Trichlorofluoromethane	< 0.42	ug/l	0.42	1.3	1	8260B		5/13/2020	CJR	1
1,2,4-Trimethylbenzene	< 0.3	ug/l	0.3	0.96	1	8260B		5/13/2020	CJR	1
1,3,5-Trimethylbenzene	< 0.32	ug/l	0.32	1	1	8260B		5/13/2020	CJR	1
Vinyl Chloride	< 0.2	ug/l	0.2	0.65	1	8260B		5/13/2020	CJR	1
m&p-Xylene	< 1.1	ug/l	1.1	3.3	1	8260B		5/13/2020	CJR	1
o-Xylene	< 0.38	ug/l	0.38	1.2	1	8260B		5/13/2020	CJR	1
SUR - 4-Bromofluorobenzene	88	REC %			1	8260B		5/13/2020	CJR	1
SUR - Dibromofluoromethane	106	REC %			1	8260B		5/13/2020	CJR	1
SUR - 1,2-Dichloroethane-d4	104	REC %			1	8260B		5/13/2020	CJR	1
SUR - Toluene-d8	94	REC %			1	8260B		5/13/2020	CJR	1

Project Name PERSHING PLAZA  
 Project # 1E-1902007

Invoice # E37883

Lab Code 5037883D  
 Sample ID MW-4  
 Sample Matrix Water  
 Sample Date 5/7/2020

	Result	Unit	LOD	LOQ	Dil	Method	Ext Date	Run Date	Analyst	Code
Organic										
VOC's										
Benzene	< 0.33	ug/l	0.33		1	8260B		5/13/2020	CJR	1
Bromobenzene	< 0.26	ug/l	0.26	0.84	1	8260B		5/13/2020	CJR	1
Bromodichloromethane	< 0.33	ug/l	0.33		1	8260B		5/13/2020	CJR	1
Bromoform	< 0.65	ug/l	0.65	2.1	1	8260B		5/13/2020	CJR	1
tert-Butylbenzene	< 0.61	ug/l	0.61	1.9	1	8260B		5/13/2020	CJR	1
sec-Butylbenzene	< 0.32	ug/l	0.32		1	8260B		5/13/2020	CJR	1
n-Butylbenzene	< 0.28	ug/l	0.28	0.89	1	8260B		5/13/2020	CJR	1
Carbon Tetrachloride	< 0.31	ug/l	0.31	0.98	1	8260B		5/13/2020	CJR	1
Chlorobenzene	< 0.39	ug/l	0.39	1.2	1	8260B		5/13/2020	CJR	1
Chloroethane	< 1.1	ug/l	1.1	3.6	1	8260B		5/13/2020	CJR	1
Chloroform	< 0.44	ug/l	0.44	1.4	1	8260B		5/13/2020	CJR	1
Chloromethane	< 0.8	ug/l	0.8	2.5	1	8260B		5/13/2020	CJR	1
2-Chlorotoluene	< 0.32	ug/l	0.32		1	8260B		5/13/2020	CJR	1
4-Chlorotoluene	< 0.3	ug/l	0.3	0.96	1	8260B		5/13/2020	CJR	1
1,2-Dibromo-3-chloropropane	< 0.82	ug/l	0.82	2.6	1	8260B		5/13/2020	CJR	1
Dibromochloromethane	< 0.23	ug/l	0.23	0.74	1	8260B		5/13/2020	CJR	1
1,4-Dichlorobenzene	< 0.36	ug/l	0.36	1.1	1	8260B		5/13/2020	CJR	1
1,3-Dichlorobenzene	< 0.31	ug/l	0.31	0.98	1	8260B		5/13/2020	CJR	1
1,2-Dichlorobenzene	< 0.32	ug/l	0.32		1	8260B		5/13/2020	CJR	1
Dichlorodifluoromethane	< 0.45	ug/l	0.45	1.4	1	8260B		5/13/2020	CJR	1
1,2-Dichloroethane	< 0.39	ug/l	0.39	1.3	1	8260B		5/13/2020	CJR	1
1,1-Dichloroethane	< 0.46	ug/l	0.46	1.5	1	8260B		5/13/2020	CJR	1
1,1-Dichloroethene	< 0.5	ug/l	0.5	1.6	1	8260B		5/13/2020	CJR	1
cis-1,2-Dichloroethene	0.4 "J"	ug/l	0.39	1.2	1	8260B		5/13/2020	CJR	1
trans-1,2-Dichloroethene	< 0.37	ug/l	0.37	1.2	1	8260B		5/13/2020	CJR	1
1,2-Dichloropropane	< 0.38	ug/l	0.38	1.2	1	8260B		5/13/2020	CJR	1
1,3-Dichloropropane	< 0.35	ug/l	0.35	1.1	1	8260B		5/13/2020	CJR	1
trans-1,3-Dichloropropene	< 0.3	ug/l	0.3	0.94	1	8260B		5/13/2020	CJR	1
cis-1,3-Dichloropropene	< 0.36	ug/l	0.36	1.1	1	8260B		5/13/2020	CJR	1
Di-isopropyl ether	< 0.34	ug/l	0.34	1.1	1	8260B		5/13/2020	CJR	1
EDB (1,2-Dibromoethane)	< 0.24	ug/l	0.24	0.75	1	8260B		5/13/2020	CJR	1
Ethylbenzene	< 0.32	ug/l	0.32		1	8260B		5/13/2020	CJR	1
Hexachlorobutadiene	< 0.72	ug/l	0.72	2.3	1	8260B		5/13/2020	CJR	1
Isopropylbenzene	< 0.32	ug/l	0.32		1	8260B		5/13/2020	CJR	1
p-Isopropyltoluene	< 0.47	ug/l	0.47	1.5	1	8260B		5/13/2020	CJR	1
Methylene chloride	< 1.32	ug/l	1.32	4.21	1	8260B		5/13/2020	CJR	1
Methyl tert-butyl ether (MTBE)	< 0.47	ug/l	0.47	1.5	1	8260B		5/13/2020	CJR	1
Naphthalene	< 1.1	ug/l	1.1	3.6	1	8260B		5/13/2020	CJR	1
n-Propylbenzene	< 0.33	ug/l	0.33	1.1	1	8260B		5/13/2020	CJR	1
1,1,2,2-Tetrachloroethane	< 0.37	ug/l	0.37	1.2	1	8260B		5/13/2020	CJR	1
1,1,1,2-Tetrachloroethane	< 0.88	ug/l	0.88	3.3	1	8260B		5/13/2020	CJR	1
Tetrachloroethene	9.4	ug/l	0.33		1	8260B		5/13/2020	CJR	1
Toluene	< 0.26	ug/l	0.26	0.83	1	8260B		5/13/2020	CJR	1
1,2,4-Trichlorobenzene	< 0.44	ug/l	0.44	1.4	1	8260B		5/13/2020	CJR	1

**Project Name** PERSHING PLAZA  
**Project #** 1E-1902007

**Invoice #** E37883

**Lab Code** 5037883D  
**Sample ID** MW-4  
**Sample Matrix** Water  
**Sample Date** 5/7/2020

	<b>Result</b>	<b>Unit</b>	<b>LOD</b>	<b>LOQ</b>	<b>Dil</b>	<b>Method</b>	<b>Ext Date</b>	<b>Run Date</b>	<b>Analyst</b>	<b>Code</b>
1,2,3-Trichlorobenzene	< 1	ug/l	1	3.2	1	8260B		5/13/2020	CJR	1
1,1,1-Trichloroethane	< 0.3	ug/l	0.3	0.95	1	8260B		5/13/2020	CJR	1
1,1,2-Trichloroethane	< 0.36	ug/l	0.36	1.1	1	8260B		5/13/2020	CJR	1
Trichloroethene (TCE)	< 0.47	ug/l	0.47	1.5	1	8260B		5/13/2020	CJR	1
Trichlorofluoromethane	< 0.42	ug/l	0.42	1.3	1	8260B		5/13/2020	CJR	1
1,2,4-Trimethylbenzene	< 0.3	ug/l	0.3	0.96	1	8260B		5/13/2020	CJR	1
1,3,5-Trimethylbenzene	< 0.32	ug/l	0.32	1	1	8260B		5/13/2020	CJR	1
Vinyl Chloride	< 0.2	ug/l	0.2	0.65	1	8260B		5/13/2020	CJR	1
m&p-Xylene	< 1.1	ug/l	1.1	3.3	1	8260B		5/13/2020	CJR	1
o-Xylene	< 0.38	ug/l	0.38	1.2	1	8260B		5/13/2020	CJR	1
SUR - 1,2-Dichloroethane-d4	104	REC %			1	8260B		5/13/2020	CJR	1
SUR - 4-Bromofluorobenzene	90	REC %			1	8260B		5/13/2020	CJR	1
SUR - Dibromofluoromethane	105	REC %			1	8260B		5/13/2020	CJR	1
SUR - Toluene-d8	96	REC %			1	8260B		5/13/2020	CJR	1

Project Name PERSHING PLAZA  
 Project # 1E-1902007

Invoice # E37883

Lab Code 5037883E  
 Sample ID MW-5  
 Sample Matrix Water  
 Sample Date 5/7/2020

	Result	Unit	LOD	LOQ	Dil	Method	Ext Date	Run Date	Analyst	Code
Organic										
VOC's										
Benzene	< 0.33	ug/l	0.33		1	8260B		5/13/2020	CJR	1
Bromobenzene	< 0.26	ug/l	0.26	0.84	1	8260B		5/13/2020	CJR	1
Bromodichloromethane	< 0.33	ug/l	0.33		1	8260B		5/13/2020	CJR	1
Bromoform	< 0.65	ug/l	0.65	2.1	1	8260B		5/13/2020	CJR	1
tert-Butylbenzene	< 0.61	ug/l	0.61	1.9	1	8260B		5/13/2020	CJR	1
sec-Butylbenzene	< 0.32	ug/l	0.32		1	8260B		5/13/2020	CJR	1
n-Butylbenzene	< 0.28	ug/l	0.28	0.89	1	8260B		5/13/2020	CJR	1
Carbon Tetrachloride	< 0.31	ug/l	0.31	0.98	1	8260B		5/13/2020	CJR	1
Chlorobenzene	< 0.39	ug/l	0.39	1.2	1	8260B		5/13/2020	CJR	1
Chloroethane	< 1.1	ug/l	1.1	3.6	1	8260B		5/13/2020	CJR	1
Chloroform	< 0.44	ug/l	0.44	1.4	1	8260B		5/13/2020	CJR	1
Chloromethane	< 0.8	ug/l	0.8	2.5	1	8260B		5/13/2020	CJR	1
2-Chlorotoluene	< 0.32	ug/l	0.32		1	8260B		5/13/2020	CJR	1
4-Chlorotoluene	< 0.3	ug/l	0.3	0.96	1	8260B		5/13/2020	CJR	1
1,2-Dibromo-3-chloropropane	< 0.82	ug/l	0.82	2.6	1	8260B		5/13/2020	CJR	1
Dibromochloromethane	< 0.23	ug/l	0.23	0.74	1	8260B		5/13/2020	CJR	1
1,4-Dichlorobenzene	< 0.36	ug/l	0.36	1.1	1	8260B		5/13/2020	CJR	1
1,3-Dichlorobenzene	< 0.31	ug/l	0.31	0.98	1	8260B		5/13/2020	CJR	1
1,2-Dichlorobenzene	< 0.32	ug/l	0.32		1	8260B		5/13/2020	CJR	1
Dichlorodifluoromethane	< 0.45	ug/l	0.45	1.4	1	8260B		5/13/2020	CJR	1
1,2-Dichloroethane	< 0.39	ug/l	0.39	1.3	1	8260B		5/13/2020	CJR	1
1,1-Dichloroethane	< 0.46	ug/l	0.46	1.5	1	8260B		5/13/2020	CJR	1
1,1-Dichloroethene	< 0.5	ug/l	0.5	1.6	1	8260B		5/13/2020	CJR	1
cis-1,2-Dichloroethene	< 0.39	ug/l	0.39	1.2	1	8260B		5/13/2020	CJR	1
trans-1,2-Dichloroethene	< 0.37	ug/l	0.37	1.2	1	8260B		5/13/2020	CJR	1
1,2-Dichloropropane	< 0.38	ug/l	0.38	1.2	1	8260B		5/13/2020	CJR	1
1,3-Dichloropropane	< 0.35	ug/l	0.35	1.1	1	8260B		5/13/2020	CJR	1
trans-1,3-Dichloropropene	< 0.3	ug/l	0.3	0.94	1	8260B		5/13/2020	CJR	1
cis-1,3-Dichloropropene	< 0.36	ug/l	0.36	1.1	1	8260B		5/13/2020	CJR	1
Di-isopropyl ether	< 0.34	ug/l	0.34	1.1	1	8260B		5/13/2020	CJR	1
EDB (1,2-Dibromoethane)	< 0.24	ug/l	0.24	0.75	1	8260B		5/13/2020	CJR	1
Ethylbenzene	< 0.32	ug/l	0.32		1	8260B		5/13/2020	CJR	1
Hexachlorobutadiene	< 0.72	ug/l	0.72	2.3	1	8260B		5/13/2020	CJR	1
Isopropylbenzene	< 0.32	ug/l	0.32		1	8260B		5/13/2020	CJR	1
p-Isopropyltoluene	< 0.47	ug/l	0.47	1.5	1	8260B		5/13/2020	CJR	1
Methylene chloride	< 1.32	ug/l	1.32	4.21	1	8260B		5/13/2020	CJR	1
Methyl tert-butyl ether (MTBE)	< 0.47	ug/l	0.47	1.5	1	8260B		5/13/2020	CJR	1
Naphthalene	< 1.1	ug/l	1.1	3.6	1	8260B		5/13/2020	CJR	1
n-Propylbenzene	< 0.33	ug/l	0.33	1.1	1	8260B		5/13/2020	CJR	1
1,1,2,2-Tetrachloroethane	< 0.37	ug/l	0.37	1.2	1	8260B		5/13/2020	CJR	1
1,1,1,2-Tetrachloroethane	< 0.88	ug/l	0.88	3.3	1	8260B		5/13/2020	CJR	1
Tetrachloroethene	< 0.33	ug/l	0.33		1	8260B		5/13/2020	CJR	1
Toluene	< 0.26	ug/l	0.26	0.83	1	8260B		5/13/2020	CJR	1
1,2,4-Trichlorobenzene	< 0.44	ug/l	0.44	1.4	1	8260B		5/13/2020	CJR	1

**Project Name** PERSHING PLAZA  
**Project #** 1E-1902007

**Invoice #** E37883

**Lab Code** 5037883E  
**Sample ID** MW-5  
**Sample Matrix** Water  
**Sample Date** 5/7/2020

	Result	Unit	LOD	LOQ	Dil	Method	Ext Date	Run Date	Analyst	Code
1,2,3-Trichlorobenzene	< 1	ug/l	1	3.2	1	8260B		5/13/2020	CJR	1
1,1,1-Trichloroethane	< 0.3	ug/l	0.3	0.95	1	8260B		5/13/2020	CJR	1
1,1,2-Trichloroethane	< 0.36	ug/l	0.36	1.1	1	8260B		5/13/2020	CJR	1
Trichloroethene (TCE)	< 0.47	ug/l	0.47	1.5	1	8260B		5/13/2020	CJR	1
Trichlorofluoromethane	< 0.42	ug/l	0.42	1.3	1	8260B		5/13/2020	CJR	1
1,2,4-Trimethylbenzene	< 0.3	ug/l	0.3	0.96	1	8260B		5/13/2020	CJR	1
1,3,5-Trimethylbenzene	< 0.32	ug/l	0.32	1	1	8260B		5/13/2020	CJR	1
Vinyl Chloride	< 0.2	ug/l	0.2	0.65	1	8260B		5/13/2020	CJR	1
m&p-Xylene	< 1.1	ug/l	1.1	3.3	1	8260B		5/13/2020	CJR	1
o-Xylene	< 0.38	ug/l	0.38	1.2	1	8260B		5/13/2020	CJR	1
SUR - Toluene-d8	96	REC %				1	8260B	5/13/2020	CJR	1
SUR - 1,2-Dichloroethane-d4	109	REC %				1	8260B	5/13/2020	CJR	1
SUR - 4-Bromofluorobenzene	91	REC %				1	8260B	5/13/2020	CJR	1
SUR - Dibromofluoromethane	112	REC %				1	8260B	5/13/2020	CJR	1

"J" Flag: Analyte detected between LOD and LOQ

LOD Limit of Detection

LOQ Limit of Quantitation

**Code**      **Comment**

1      Laboratory QC within limits.

All solid sample results reported on a dry weight basis unless otherwise indicated. All LOD's and LOQ's are adjusted for dilutions but not dry weight. Subcontracted results are denoted by SUB in the analyst field.

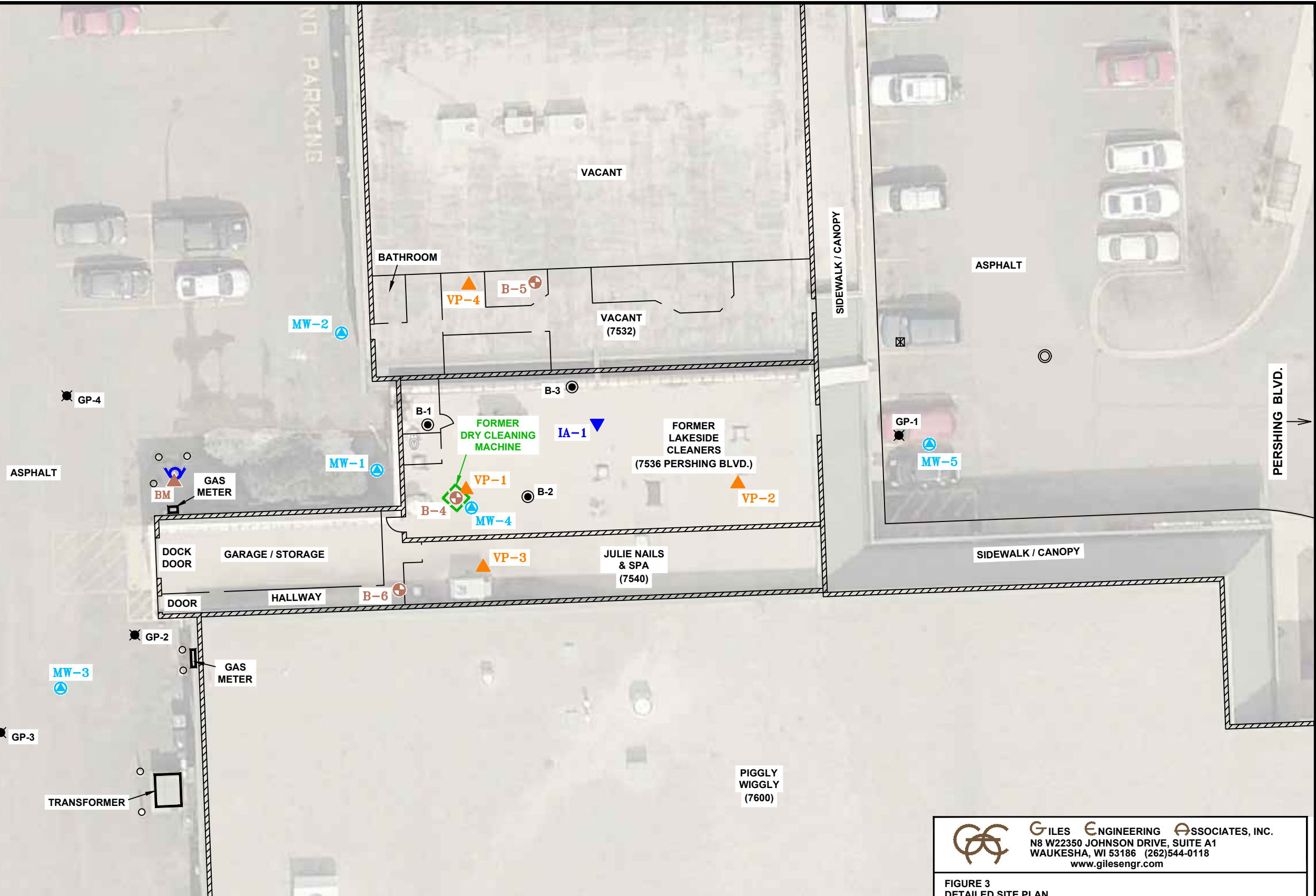
**Authorized Signature**



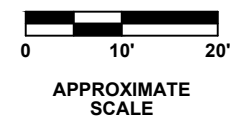


**LEGEND:**

MW-1	GROUNDWATER MONITORING WELL
VP-1	SUB-SLAB VAPOR POINT
IA-1	INDOOR AIR SAMPLE
B-4	SOIL BORING
B-1	PREVIOUS HAND AUGER (BY SIGMA GROUP)
GP-1	PREVIOUS GEOPROBE SOIL BORING (BY SIGMA GROUP)
Fire Hydrant Symbol	FIRE HYDRANT
Catch Basin Symbol	CATCH BASIN
Manhole Symbol	MANHOLE
BM	BENCHMARK: TOP OF FIRE HYDRANT. ASSUMED ELEVATION = 100.0'



**NOTES:**  
 1.) EXISTING FEATURES ARE APPROXIMATE BASED ON AERIAL PHOTOGRAPHY AND FIELD OBSERVATIONS.



**GILES ENGINEERING ASSOCIATES, INC.**  
 N8 W22350 JOHNSON DRIVE, SUITE A1  
 WAUKESHA, WI 53186 (262)544-0118  
 www.gilesengr.com

**FIGURE 3  
 DETAILED SITE PLAN  
 PERSHING PLAZA SHOPPING CENTER  
 (FORMER LAKESIDE CLEANERS)  
 7536 PERSHING BOULEVARD  
 KENOSHA, WISCONSIN**

DESIGNED	DRAWN	SCALE	DATE	REVISED
SMO/KMH	<i>Jed</i>	approx. 1"=20'	10-08-19	04-23-20
PROJECT NO.: 1E-1902007			CAD No. 1E1902007C3	