

OU2
EXECUTIVE SUMMARY - COMPLETED REMEDIAL ACTION



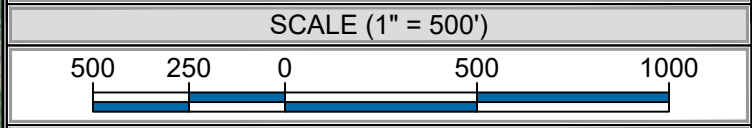
LEGEND

- No Action Required
- Primary Dredge - No Further Action
- Primary Dredge - 6" Residual Sand Cover
- Primary Dredge - 9" Residual Sand Cover
- Primary Sand Cover
- Primary/Residual Dredge and Cap
- Primary Cap



OPERABLE UNIT
 DREDGE AREA
 DREDGE COMPLETION UNIT
 DREDGE MANAGEMENT UNIT

DREDGE COMPLETION UNIT (DCU)
 DREDGE MANAGEMENT UNIT (DMU)



NOTES

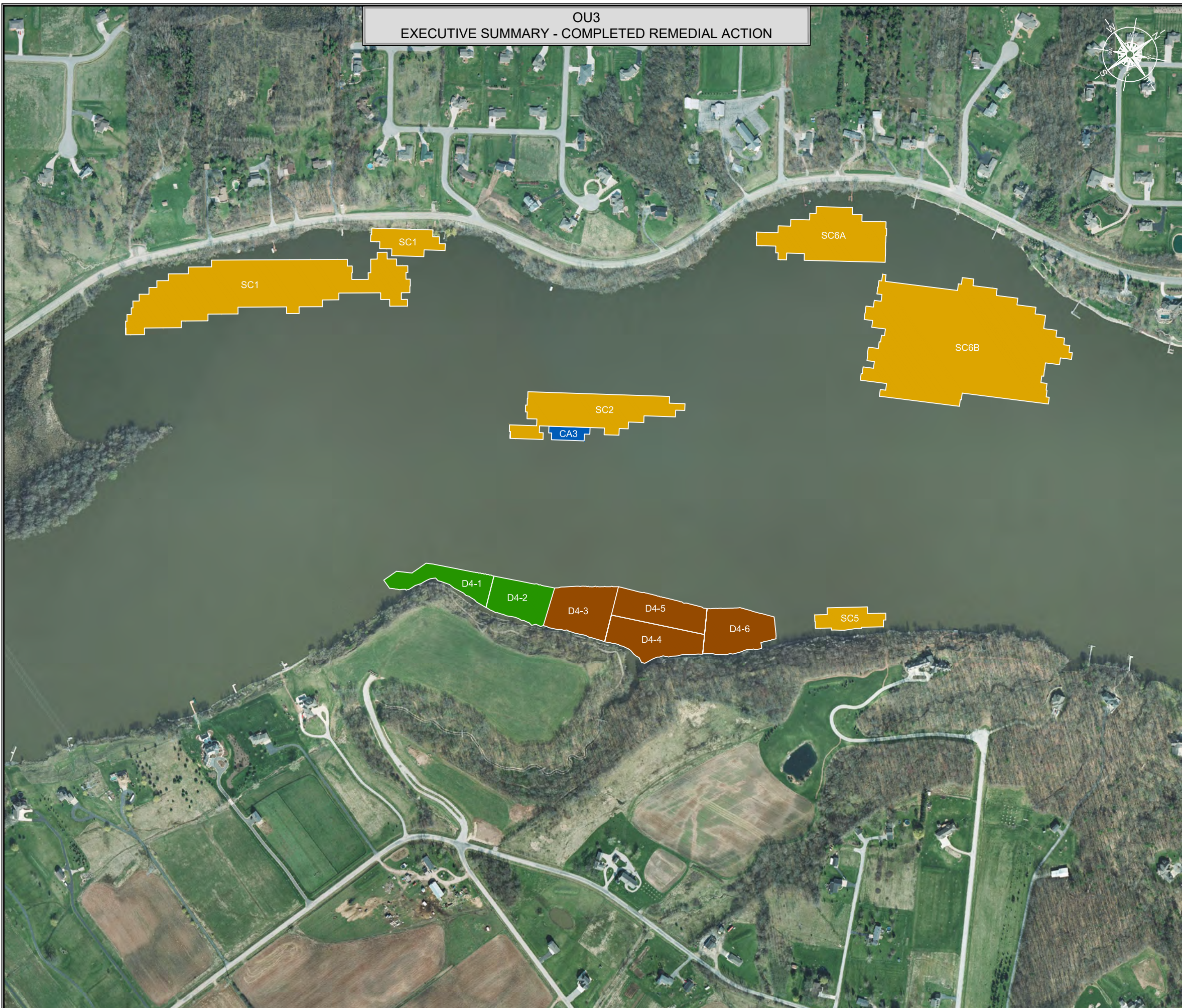
THIS DOCUMENT IS THE PROPERTY OF LOWER FOX RIVER REMEDIATION LLC PREPARED BY TETRA TECH EC, INC. (TTEC), AND IS PROVIDED UPON THE CONDITION THAT IT WILL NOT BE REPRODUCED, COPIED, OR ISSUED TO A THIRD PARTY. IT IS PROVIDED TO BE USED SOLELY FOR THE ORIGINAL INTENDED PURPOSE, AND SOLELY FOR THE EXECUTION OR REVIEW OF THE ENGINEERING AND CONSTRUCTION OF THE SUBJECT PROJECT.

TETRA TECH EC, INC.
 1611 STATE STREET
 GREEN BAY, WI 54304
 TEL: (920) 445 - 0720 FAX: (920) 445 - 0719

CAD FILE: Completed RA Summary OU2 - OU5 R2.dwg
 DRAWN BY: RICKY.GIFFORD
 DATE: March 8, 2021
 LAST REVISED: March 8, 2021
 CHECKED BY: REG

ES Sheet 1 of 15

OU3
EXECUTIVE SUMMARY - COMPLETED REMEDIAL ACTION



LEGEND

- No Action Required
- Primary Dredge - No Further Action
- Primary Dredge - 6" Residual Sand Cover
- Primary Dredge - 9" Residual Sand Cover
- Primary Sand Cover
- Primary/Residual Dredge and Cap
- Primary Cap



SCALE (1" = 500')



NOTES

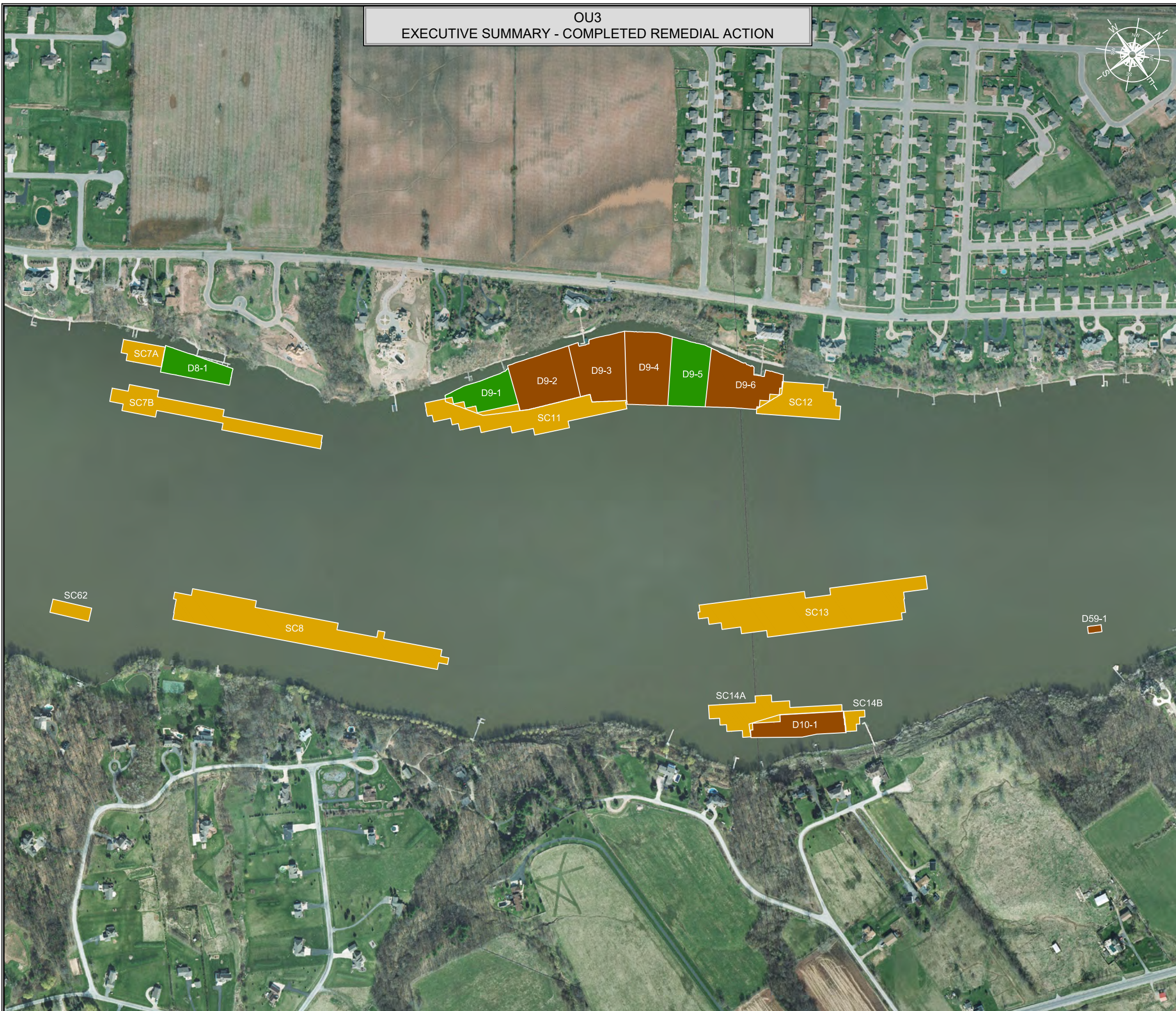
THIS DOCUMENT IS THE PROPERTY OF LOWER FOX RIVER REMEDIATION LLC PREPARED BY TETRA TECH EC, INC. (TTEC), AND IS PROVIDED UPON THE CONDITION THAT IT WILL NOT BE REPRODUCED, COPIED, OR ISSUED TO A THIRD PARTY. IT IS PROVIDED TO BE USED SOLELY FOR THE ORIGINAL INTENDED PURPOSE, AND SOLELY FOR THE EXECUTION OR REVIEW OF THE ENGINEERING AND CONSTRUCTION OF THE SUBJECT PROJECT.

TETRA TECH EC, INC.
 1611 STATE STREET
 GREEN BAY, WI 54304
 TEL: (920) 445 - 0720 FAX: (920) 445 - 0719

CAD FILE: Completed RA Summary OU2 - OU5 R2.dwg
 DRAWN BY: RICKY.GIFFORD
 DATE: March 8, 2021
 LAST REVISED: March 8, 2021
 CHECKED BY: REG



OU3
EXECUTIVE SUMMARY - COMPLETED REMEDIAL ACTION



LEGEND

- No Action Required
- Primary Dredge - No Further Action
- Primary Dredge - 6" Residual Sand Cover
- Primary Dredge - 9" Residual Sand Cover
- Primary Sand Cover
- Primary/Residual Dredge and Cap
- Primary Cap


- OPERABLE UNIT
- DREDGE AREA
- DREDGE COMPLETION UNIT
- DREDGE MANAGEMENT UNIT
- DREDGE COMPLETION UNIT (DCU)
- DREDGE MANAGEMENT UNIT (DMU)

SCALE (1" = 500')




NOTES

THIS DOCUMENT IS THE PROPERTY OF LOWER FOX RIVER REMEDIATION LLC PREPARED BY TETRA TECH EC, INC. (TTEC), AND IS PROVIDED UPON THE CONDITION THAT IT WILL NOT BE REPRODUCED, COPIED, OR ISSUED TO A THIRD PARTY. IT IS PROVIDED TO BE USED SOLELY FOR THE ORIGINAL INTENDED PURPOSE, AND SOLELY FOR THE EXECUTION OR REVIEW OF THE ENGINEERING AND CONSTRUCTION OF THE SUBJECT PROJECT.

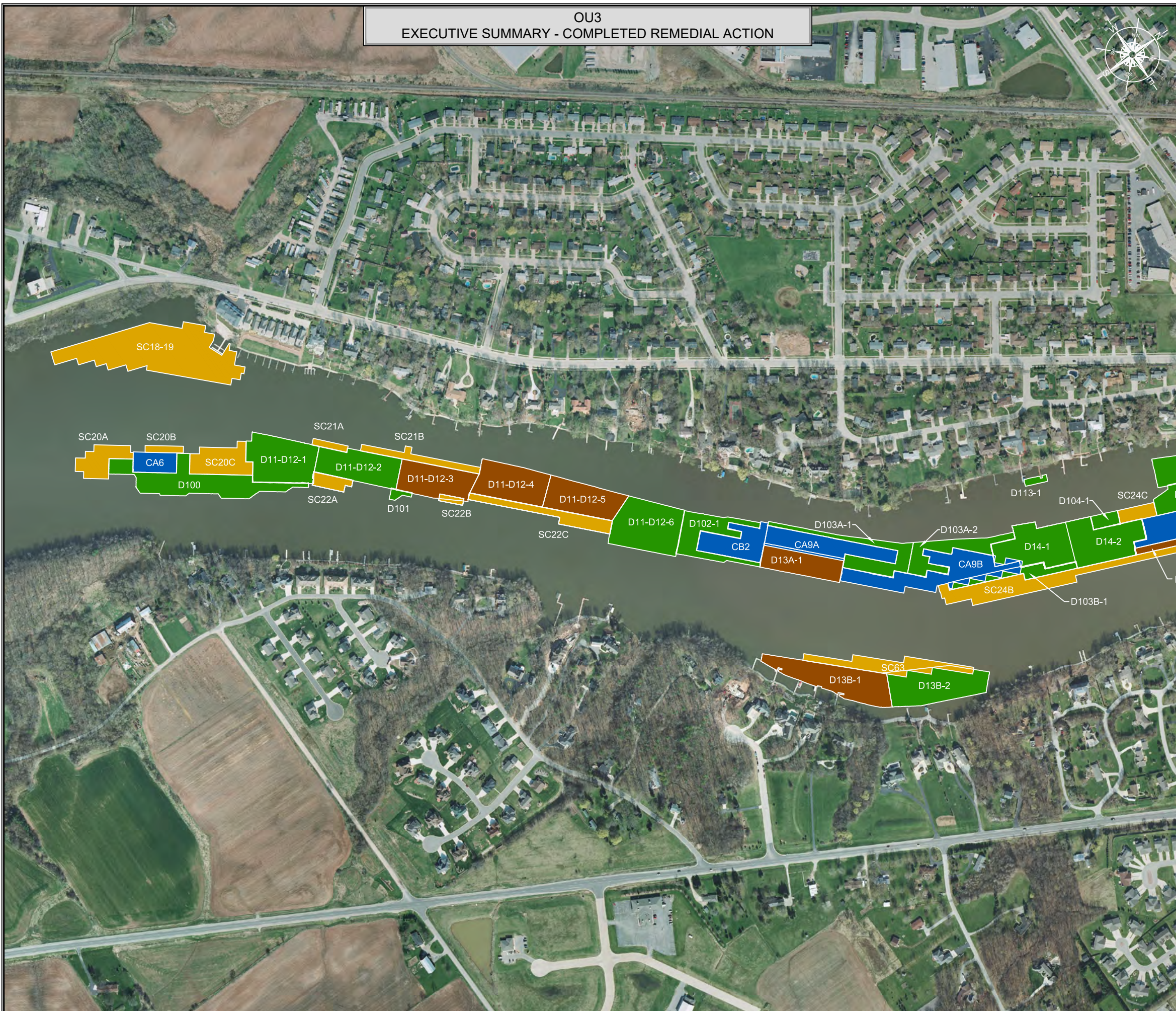


TETRA TECH EC, INC.
1611 STATE STREET
GREEN BAY, WI 54304
TEL: (920) 445 - 0720 FAX: (920) 445 - 0719



CAD FILE: Completed RA Summary OU2 - OU5 R2.dwg
DRAWN BY: RICKY.GIFFORD
DATE: March 8, 2021
LAST REVISED: March 8, 2021
CHECKED BY: REG
ES Sheet 3 of 15
P:\LLC\CAD\Field Engineering\OU2 - OU5 Completed RA Summary\Completed RA Summary OU2 - OU5 R2.dwg

OU3
EXECUTIVE SUMMARY - COMPLETED REMEDIAL ACTION



LEGEND

- No Action Required
- Primary Dredge - No Further Action
- Primary Dredge - 6" Residual Sand Cover
- Primary Dredge - 9" Residual Sand Cover
- Primary Sand Cover
- Primary/Residual Dredge and Cap
- Primary Cap



SCALE (1" = 500')



NOTES

THIS DOCUMENT IS THE PROPERTY OF LOWER FOX RIVER REMEDIATION LLC PREPARED BY TETRA TECH EC, INC. (TTEC), AND IS PROVIDED UPON THE CONDITION THAT IT WILL NOT BE REPRODUCED, COPIED, OR ISSUED TO A THIRD PARTY. IT IS PROVIDED TO BE USED SOLELY FOR THE ORIGINAL INTENDED PURPOSE, AND SOLELY FOR THE EXECUTION OR REVIEW OF THE ENGINEERING AND CONSTRUCTION OF THE SUBJECT PROJECT.


TETRA TECH EC, INC.
 1611 STATE STREET
 GREEN BAY, WI 54304
 TEL: (920) 445 - 0720 FAX: (920) 445 - 0719

CAD FILE: Completed RA Summary OU2 - OU5 R2.dwg
 DRAWN BY: RICKY.GIFFORD
 DATE: March 8, 2021
 LAST REVISED: March 8, 2021
 CHECKED BY: REG

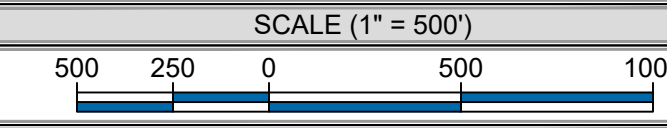
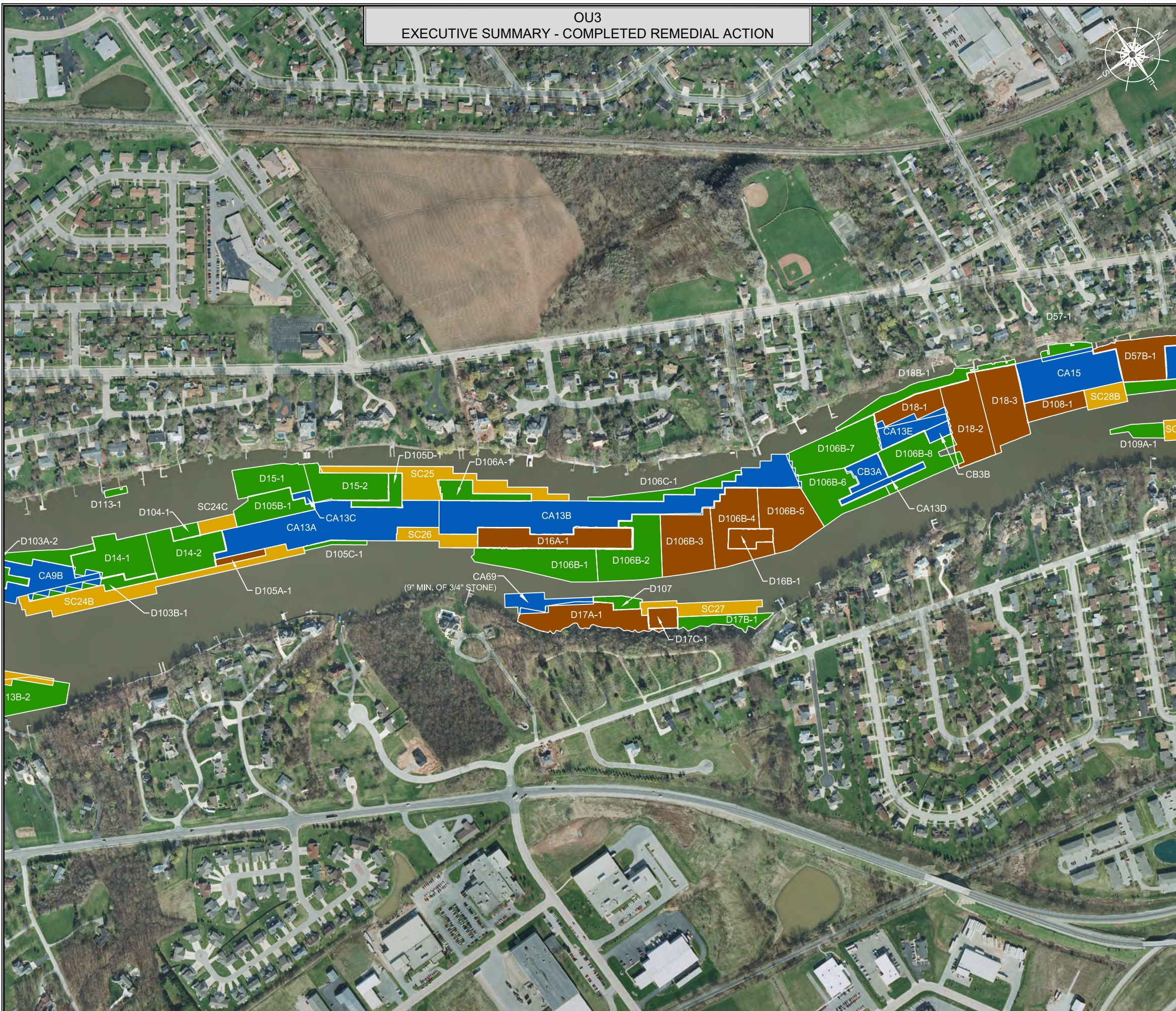


OU3
EXECUTIVE SUMMARY - COMPLETED REMEDIAL ACTION



LEGEND

- No Action Required
- Primary Dredge - No Further Action
- Primary Dredge - 6" Residual Sand Cover
- Primary Dredge - 9" Residual Sand Cover
- Primary Sand Cover
- Primary/Residual Dredge and Cap
- Primary Cap



NOTES

THIS DOCUMENT IS THE PROPERTY OF LOWER FOX RIVER REMEDIATION LLC PREPARED BY TETRA TECH EC, INC. (TTEC), AND IS PROVIDED UPON THE CONDITION THAT IT WILL NOT BE REPRODUCED, COPIED, OR ISSUED TO A THIRD PARTY. IT IS PROVIDED TO BE USED SOLELY FOR THE ORIGINAL INTENDED PURPOSE, AND SOLELY FOR THE EXECUTION OR REVIEW OF THE ENGINEERING AND CONSTRUCTION OF THE SUBJECT PROJECT.

TETRA TECH EC, INC.
 1611 STATE STREET
 GREEN BAY, WI 54304
 TEL: (920) 445 - 0720 FAX: (920) 445 - 0719

CAD FILE: Completed RA Summary OU2 - OU5 R2.dwg
 DRAWN BY: RICKY.GIFFORD
 DATE: March 8, 2021
 LAST REVISED: March 8, 2021
 CHECKED BY: REG

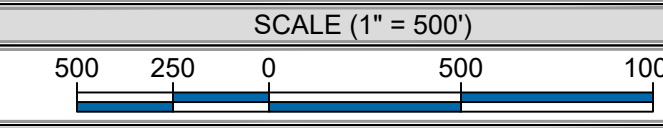


OU3
EXECUTIVE SUMMARY - COMPLETED REMEDIAL ACTION



LEGEND

- No Action Required
- Primary Dredge - No Further Action
- Primary Dredge - 6" Residual Sand Cover
- Primary Dredge - 9" Residual Sand Cover
- Primary Sand Cover
- Primary/Residual Dredge and Cap
- Primary Cap



NOTES

THIS DOCUMENT IS THE PROPERTY OF LOWER FOX RIVER REMEDIATION LLC PREPARED BY TETRA TECH EC, INC. (TTEC), AND IS PROVIDED UPON THE CONDITION THAT IT WILL NOT BE REPRODUCED, COPIED, OR ISSUED TO A THIRD PARTY. IT IS PROVIDED TO BE USED SOLELY FOR THE ORIGINAL INTENDED PURPOSE, AND SOLELY FOR THE EXECUTION OR REVIEW OF THE ENGINEERING AND CONSTRUCTION OF THE SUBJECT PROJECT.

TETRA TECH EC, INC.
 1611 STATE STREET
 GREEN BAY, WI 54304
 TEL: (920) 445 - 0720 FAX: (920) 445 - 0719

CAD FILE: Completed RA Summary OU2 - OU5 R2.dwg
 DRAWN BY: RICKY.GIFFORD
 DATE: March 8, 2021
 LAST REVISED: March 8, 2021
 CHECKED BY: REG

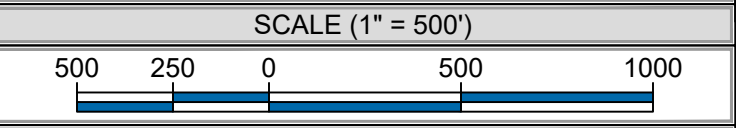
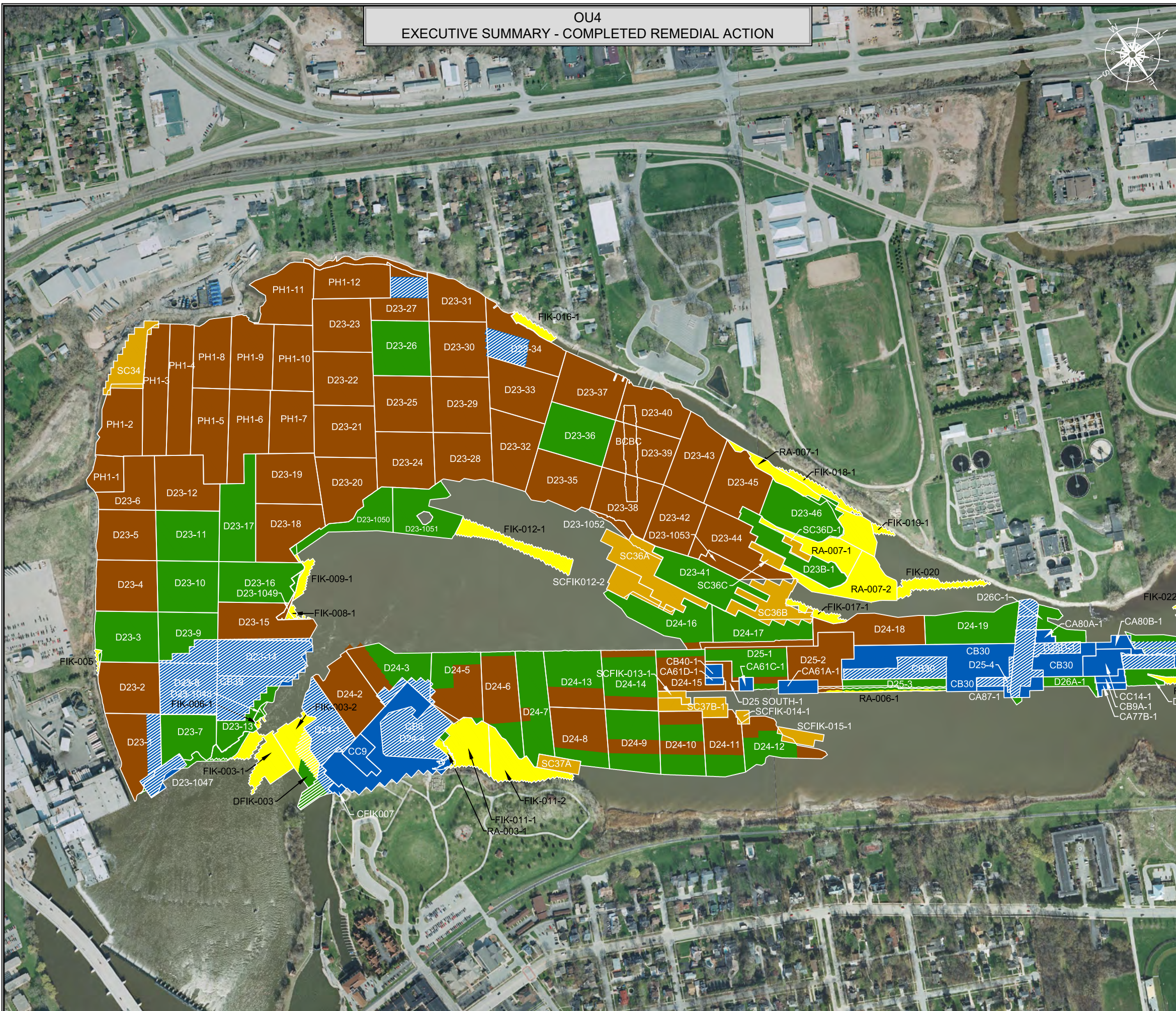


OU4
EXECUTIVE SUMMARY - COMPLETED REMEDIAL ACTION



LEGEND

- No Action Required
- Primary Dredge - No Further Action
- Primary Dredge - 6" Residual Sand Cover
- Primary Dredge - 9" Residual Sand Cover
- Primary Sand Cover
- Primary/Residual Dredge and Cap
- Primary Cap



NOTES

THIS DOCUMENT IS THE PROPERTY OF LOWER FOX RIVER REMEDIATION LLC PREPARED BY TETRA TECH EC, INC. (TTEC), AND IS PROVIDED UPON THE CONDITION THAT IT WILL NOT BE REPRODUCED, COPIED, OR ISSUED TO A THIRD PARTY. IT IS PROVIDED TO BE USED SOLELY FOR THE ORIGINAL INTENDED PURPOSE, AND SOLELY FOR THE EXECUTION OR REVIEW OF THE ENGINEERING AND CONSTRUCTION OF THE SUBJECT PROJECT.

TETRA TECH EC, INC.
 1611 STATE STREET
 GREEN BAY, WI 54304
 TEL: (920) 445 - 0720 FAX: (920) 445 - 0719

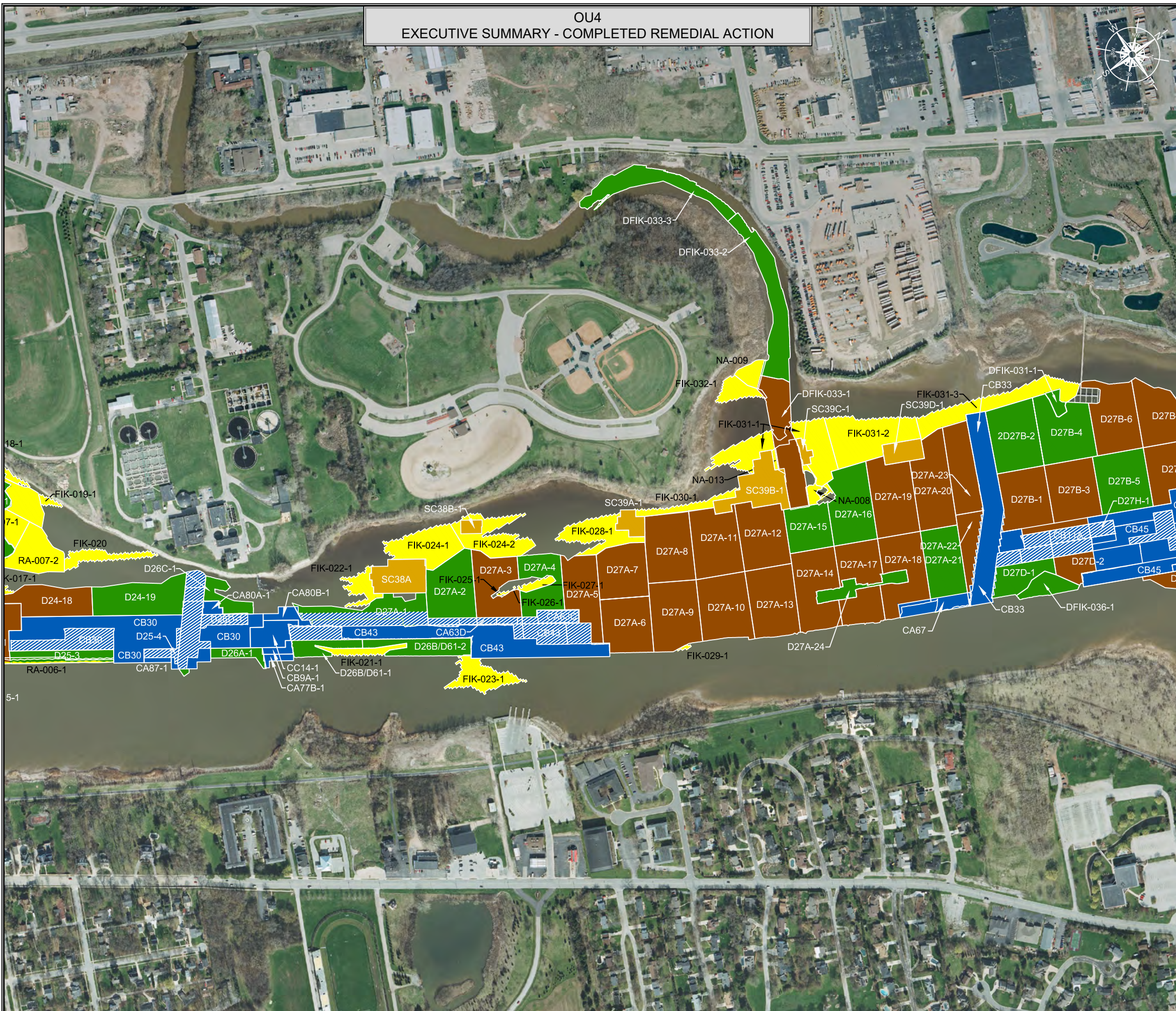
CAD FILE: Completed RA Summary OU2 - OU5 R2.dwg
 DRAWN BY: RICKY.GIFFORD
 DATE: March 8, 2021
 LAST REVISED: March 8, 2021
 CHECKED BY: REG

ES Sheet 7 of 15

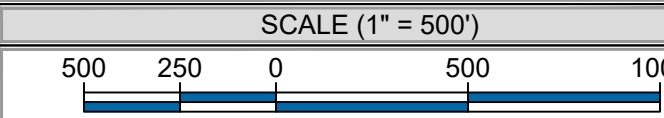
OU4
EXECUTIVE SUMMARY - COMPLETED REMEDIAL ACTION

LEGEND

- No Action Required
- Primary Dredge - No Further Action
- Primary Dredge - 6" Residual Sand Cover
- Primary Dredge - 9" Residual Sand Cover
- Primary Sand Cover
- Primary/Residual Dredge and Cap
- Primary Cap



- OPERABLE UNIT
- DREDGE AREA
- DREDGE COMPLETION UNIT
- DREDGE MANAGEMENT UNIT
- DREDGE COMPLETION UNIT (DCU)
- DREDGE MANAGEMENT UNIT (DMU)



NOTES

THIS DOCUMENT IS THE PROPERTY OF LOWER FOX RIVER REMEDIATION LLC PREPARED BY TETRA TECH EC, INC. (TTEC), AND IS PROVIDED UPON THE CONDITION THAT IT WILL NOT BE REPRODUCED, COPIED, OR ISSUED TO A THIRD PARTY. IT IS PROVIDED TO BE USED SOLELY FOR THE ORIGINAL INTENDED PURPOSE, AND SOLELY FOR THE EXECUTION OR REVIEW OF THE ENGINEERING AND CONSTRUCTION OF THE SUBJECT PROJECT.

TETRA TECH EC, INC.
 1611 STATE STREET
 GREEN BAY, WI 54304
 TEL: (920) 445 - 0720 FAX: (920) 445 - 0719

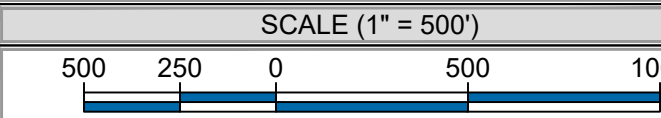
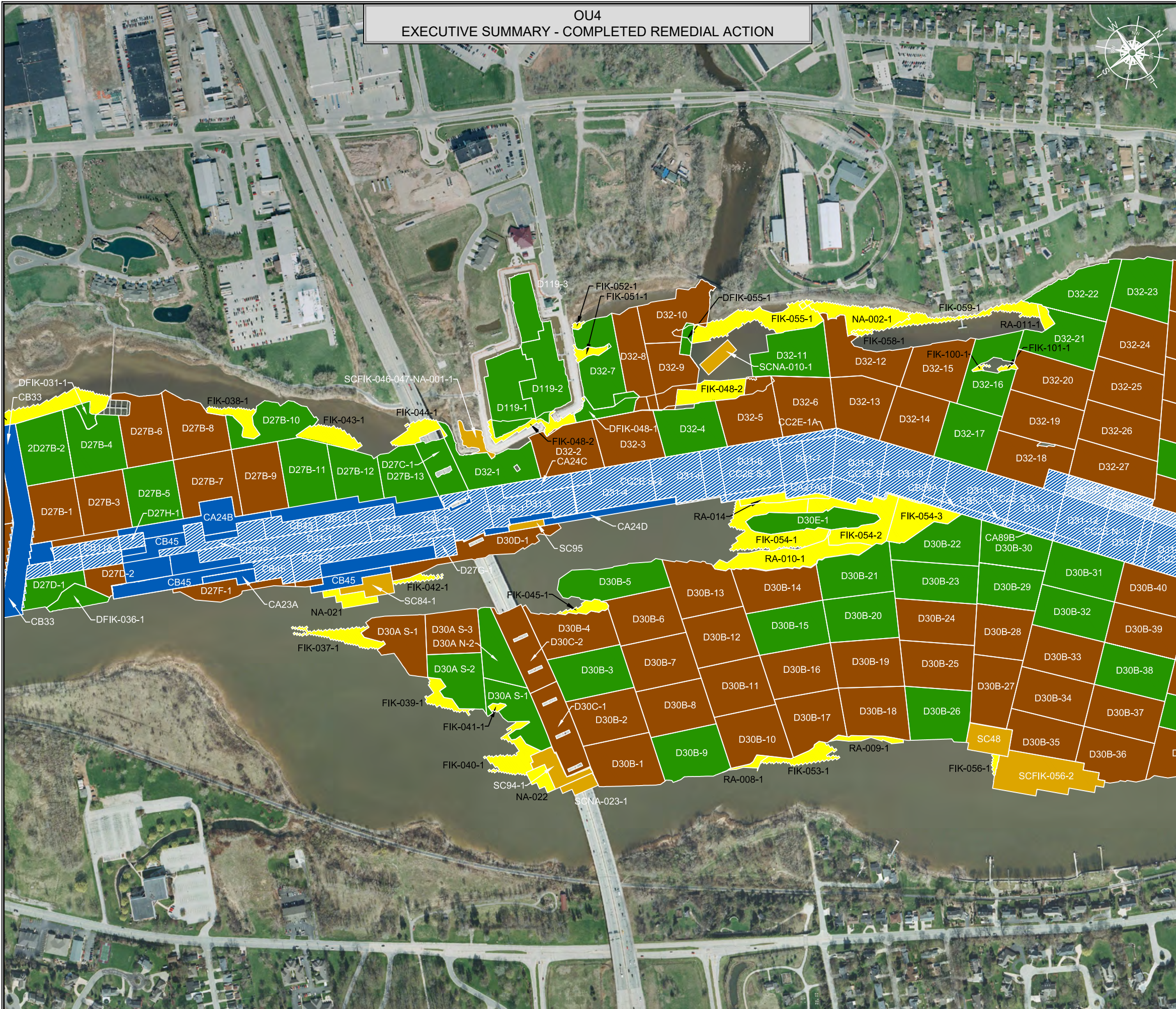
CAD FILE: Completed RA Summary OU2 - OU5 R2.dwg
 DRAWN BY: RICKY.GIFFORD
 DATE: March 8, 2021
 LAST REVISED: March 8, 2021
 CHECKED BY: REG
 ES Sheet 8 of 15

OU4
EXECUTIVE SUMMARY - COMPLETED REMEDIAL ACTION



LEGEND

- No Action Required
- Primary Dredge - No Further Action
- Primary Dredge - 6" Residual Sand Cover
- Primary Dredge - 9" Residual Sand Cover
- Primary Sand Cover
- Primary/Residual Dredge and Cap
- Primary Cap



NOTES

THIS DOCUMENT IS THE PROPERTY OF LOWER FOX RIVER REMEDIATION LLC PREPARED BY TETRA TECH EC, INC. (TTEC), AND IS PROVIDED UPON THE CONDITION THAT IT WILL NOT BE REPRODUCED, COPIED, OR ISSUED TO A THIRD PARTY. IT IS PROVIDED TO BE USED SOLELY FOR THE ORIGINAL INTENDED PURPOSE, AND SOLELY FOR THE EXECUTION OR REVIEW OF THE ENGINEERING AND CONSTRUCTION OF THE SUBJECT PROJECT.

TETRA TECH EC, INC.
 1611 STATE STREET
 GREEN BAY, WI 54304
 TEL: (920) 445 - 0720 FAX: (920) 445 - 0719

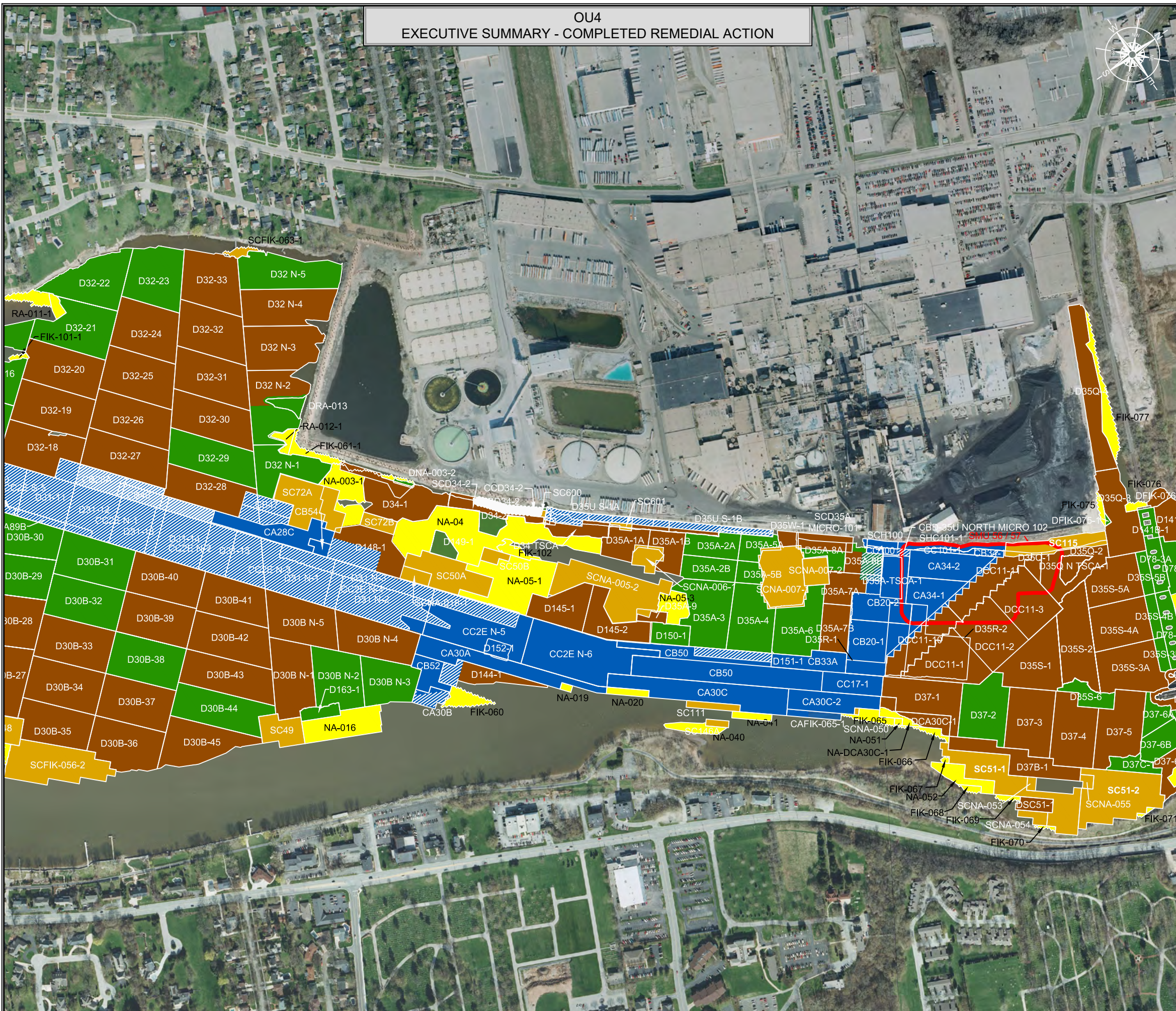
CAD FILE: Completed RA Summary OU2 - OU5 R2.dwg
 DRAWN BY: RICKY.GIFFORD
 DATE: March 8, 2021
 LAST REVISED: March 8, 2021
 CHECKED BY: REG

ES Sheet 9 of 15

P:\LLC\CAD\Field Engineering\OU2 - OU5 Completed RA Summary\Completed RA Summary OU2 - OU5 R2.dwg



OU4
EXECUTIVE SUMMARY - COMPLETED REMEDIAL ACTION



LEGEND

- No Action Required
- Primary Dredge - No Further Action
- Primary Dredge - 6" Residual Sand Cover
- Primary Dredge - 9" Residual Sand Cover
- Primary Dredge - 12" Residual Sand Cover
- Primary Sand Cover
- Primary/Residual Dredge and Cap
- Primary Cap



SCALE (1" = 500')



NOTES

THIS DOCUMENT IS THE PROPERTY OF LOWER FOX RIVER REMEDIATION LLC PREPARED BY TETRA TECH EC, INC. (TTEC), AND IS PROVIDED UPON THE CONDITION THAT IT WILL NOT BE REPRODUCED, COPIED, OR ISSUED TO A THIRD PARTY. IT IS PROVIDED TO BE USED SOLELY FOR THE ORIGINAL INTENDED PURPOSE, AND SOLELY FOR THE EXECUTION OR REVIEW OF THE ENGINEERING AND CONSTRUCTION OF THE SUBJECT PROJECT.




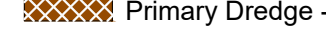


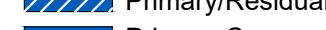
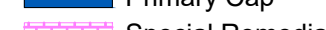
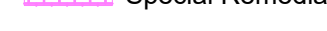
TETRA TECH EC, INC.
 1611 STATE STREET
 GREEN BAY, WI 54304
 TEL: (920) 445 - 0720 FAX: (920) 445 - 0719

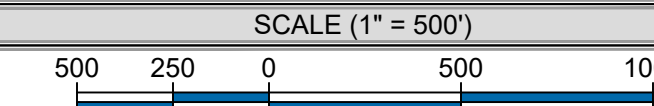
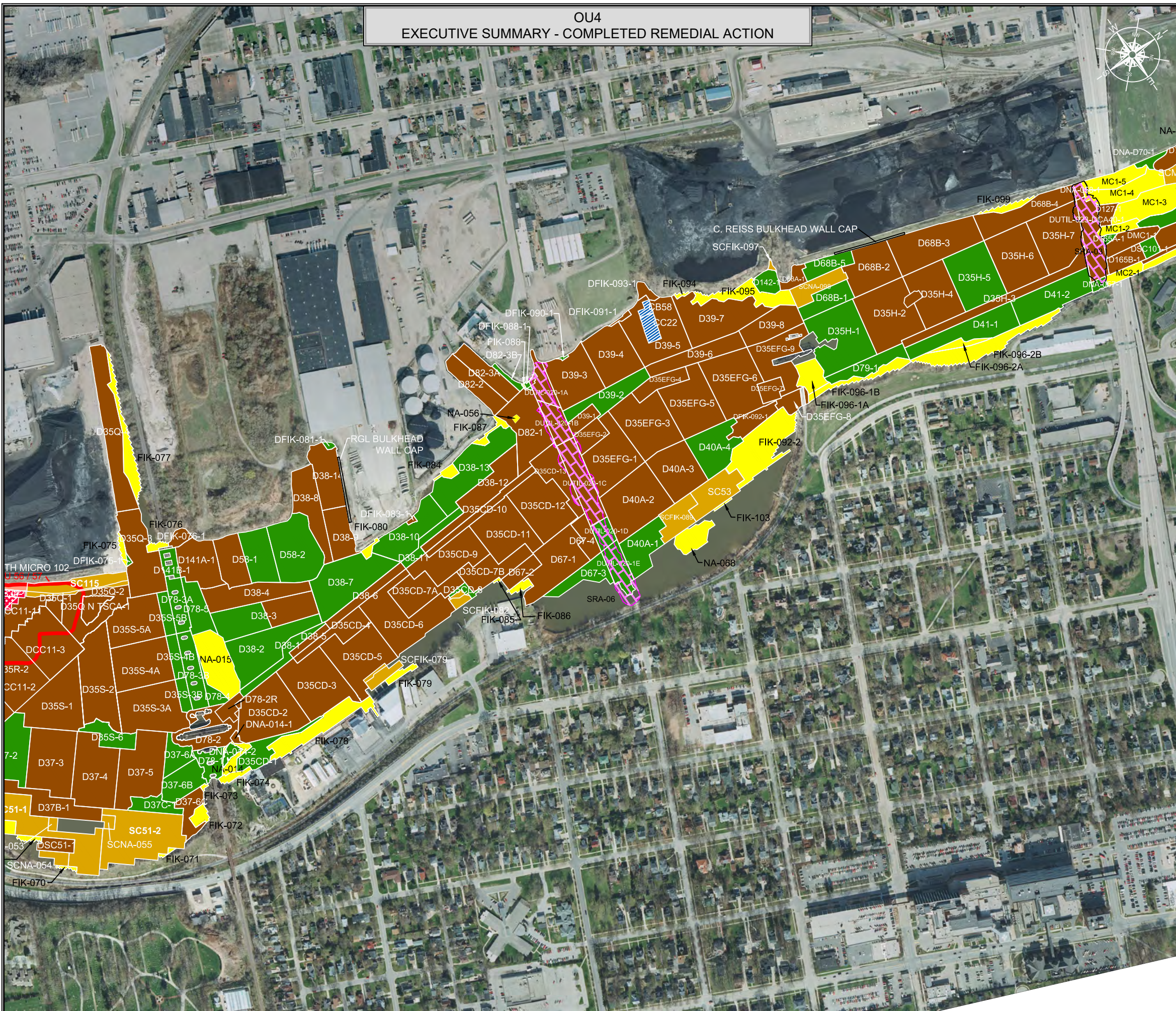
CAD FILE: Completed RA Summary OU2 - OU5 R2.dwg
 DRAWN BY: RICKY.GIFFORD
 DATE: March 8, 2021
 LAST REVISED: March 8, 2021
 CHECKED BY: REG
 ES Sheet 10 of 15



OU4
EXECUTIVE SUMMARY - COMPLETED REMEDIAL ACTION

LEGEND

-  No Action Required
-  Primary Dredge - No Further Action
-  Primary Dredge - 6" Residual Sand Cover
-  Primary Dredge - 9" Residual Sand Cover
-  Primary Dredge - 12" Residual Sand Cover
-  Primary Sand Cover
-  Primary/Residual Dredge and Cap
-  Primary Cap
-  Special Remedial Action Cap (SRA)



NOTES

THIS DOCUMENT IS THE PROPERTY OF LOWER FOX RIVER REMEDIATION LLC PREPARED BY TETRA TECH EC, INC. (TTEC), AND IS PROVIDED UPON THE CONDITION THAT IT WILL NOT BE REPRODUCED, COPIED, OR ISSUED TO A THIRD PARTY. IT IS PROVIDED TO BE USED SOLELY FOR THE ORIGINAL INTENDED PURPOSE, AND SOLELY FOR THE EXECUTION OR REVIEW OF THE ENGINEERING AND CONSTRUCTION OF THE SUBJECT PROJECT.

TETRA TECH EC, INC.
 1611 STATE STREET
 GREEN BAY, WI 54304
 TEL: (920) 445 - 0720 FAX: (920) 445 - 0719

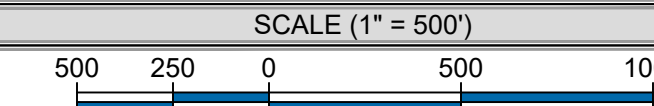
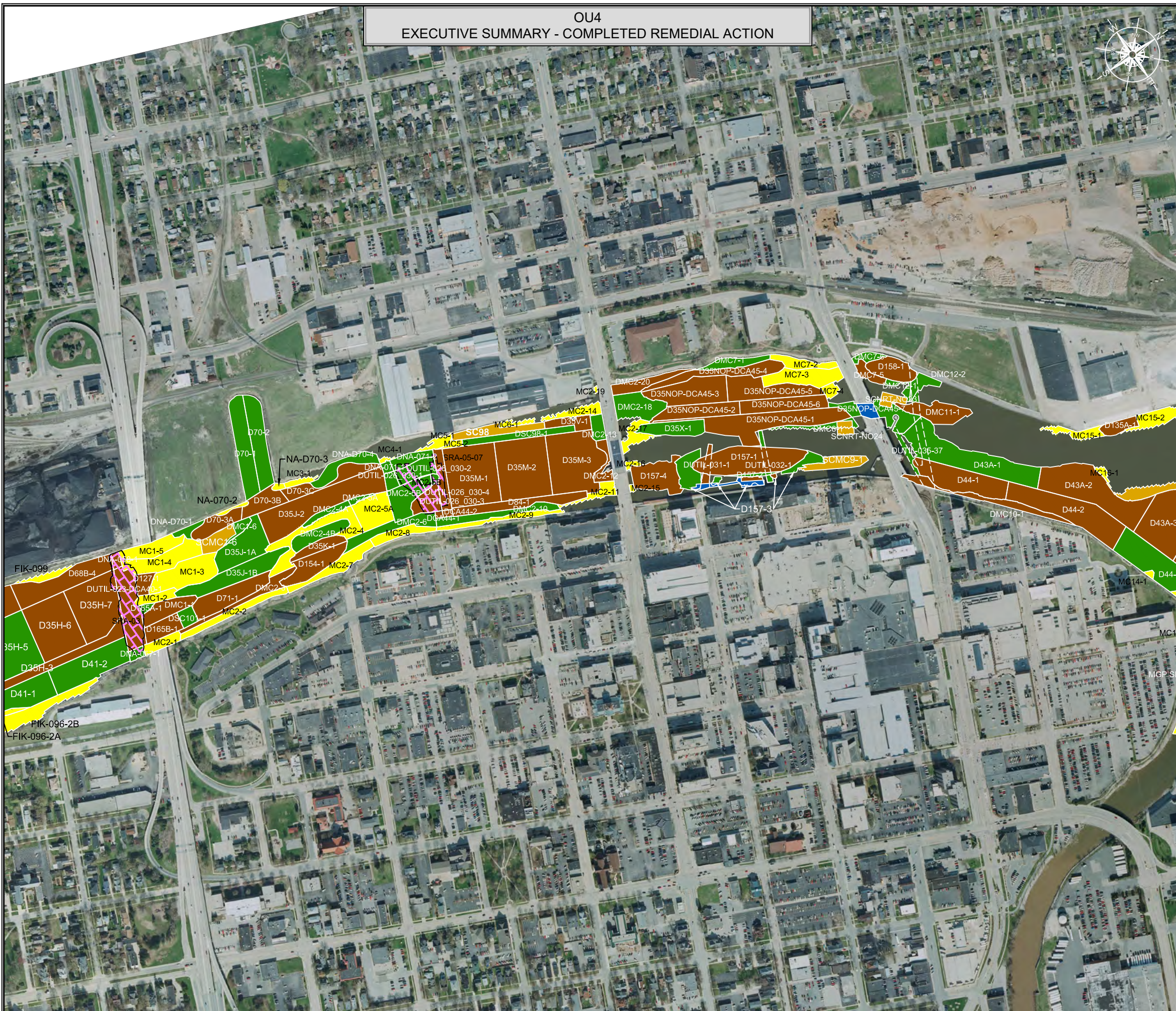
CAD FILE: Completed RA Summary OU2 - OU5 R2.dwg
 DRAWN BY: RICKY.GIFFORD
 DATE: March 8, 2021
 LAST REVISED: March 8, 2021
 CHECKED BY: REG



OU4
EXECUTIVE SUMMARY - COMPLETED REMEDIAL ACTION

LEGEND

- No Action Required
- Primary Dredge - No Further Action
- Primary Dredge - 6" Residual Sand Cover
- Primary Dredge - 9" Residual Sand Cover
- Primary Dredge - 12" Residual Sand Cover
- Primary Sand Cover
- Primary/Residual Dredge and Cap
- Primary Cap
- Special Remedial Action Cap (SRA)



NOTES

THIS DOCUMENT IS THE PROPERTY OF LOWER FOX RIVER REMEDIATION LLC PREPARED BY TETRA TECH EC, INC. (TTEC), AND IS PROVIDED UPON THE CONDITION THAT IT WILL NOT BE REPRODUCED, COPIED, OR ISSUED TO A THIRD PARTY. IT IS PROVIDED TO BE USED SOLELY FOR THE ORIGINAL INTENDED PURPOSE, AND SOLELY FOR THE EXECUTION OR REVIEW OF THE ENGINEERING AND CONSTRUCTION OF THE SUBJECT PROJECT.

TETRA TECH EC, INC.
 1611 STATE STREET
 GREEN BAY, WI 54304
 TEL: (920) 445 - 0720 FAX: (920) 445 - 0719

CAD FILE: Completed RA Summary OU2 - OU5 R2.dwg
 DRAWN BY: RICKY.GIFFORD
 DATE: March 8, 2021
 LAST REVISED: March 8, 2021
 CHECKED BY: REG



