

From: Mitchell, Jeremy A - DNR
Sent: Thursday, February 4, 2021 1:07 PM
To: Hedman, Curtis J - DHS; Eggebrecht, Kurt; Borski, Jennifer - DNR; Schultz, Josie M - DNR
Subject: FW: Former Neighborhood Cleaners
Attachments: Vapor Testing.xls; Scan0004.pdf

All,

I just spoke with the consultant for the former Neighborhood Cleaners Property in Appleton. He has been out to the site numerous times and has just finished collecting additional samples in clean-outs/drains. I had them investigate where the utilities are located and GEC is working to put together a more formal figure depicting sample locations, utilities, etc.

To summarize:

There is an ambient air issue (**TCE > 50 ug/m3**) stemming from an unknown source. **SSMH-1** had an exceedance in the sanitary line, however it does not appear to be directly connected to the Play It Again Sports. Sub-slab sampling efforts haven't indicated an issue or second source. We are hoping that the cleanout samples can provide additional clarification, but may not. Brian has stated that the only other obvious possibility would be the heating of wax used for skis/snowboards. I haven't seen any information linking wax to TCE issues, but haven't been able to look into it in much detail.

I have asked Brian to cleanup their figures and tables with the next batch of sample results which we are anticipating will be available on Monday. At that time if we still don't have an identified source/pathway Brian had mentioned that he would be willing to have a conference call to discuss available options. The Property owner has been very cooperative with the sampling and investigation, however they still have reservations on temporary filtration units due to the cost to adequately filter the entirety of the building.

If anyone has any suggestions or comments please let me know.

Thanks,

We are committed to service excellence.

Visit our survey at <http://dnr.wi.gov/customersurvey> to evaluate how I did.

Jeremy Mitchell

Phone: (920) 366-6830

Jeremy.Mitchell@wisconsin.gov

From: Brian Youngwirth <byoungwirth@generalengineering.net>
Sent: Wednesday, February 3, 2021 1:51 PM
To: Mitchell, Jeremy A - DNR <jeremy.mitchell@wisconsin.gov>
Subject: Former Neighborhood Cleaners

Jeremy, our CAD person is not in right now but here is a rough map with the utility and Play it Again vapor testing locations so far, and the table. Please call me whenever you have time this afternoon.

Brian Youngwirth
Environmental Project Manager | General Engineering Company
916 Silver Lake Drive | PO Box 340 | Portage, WI 53901
P 608-742-2169 | Fax 608-742-2592 | C 608-697-8010
byoungwirth@generalengineering.net
www.generalengineering.net

GENERAL ENGINEERING COMPANY ELECTRONIC FILE NOTICE AND DISCLAIMER

This email and any electronic media transmitted with it are provided solely for the use of the addressee. Data, plans, specifications, reports, documents, and other information recorded on or transmitted as electronic media are subject to undetectable alteration, either intentional or unintentional, due to, among other causes, transmission, conversion, media degradation, software error, or human alteration. Accordingly, all such documents recorded on or transmitted as electronic media are being provided to the addressee for informational purposes only, and not as an end product or as a record document. Any reliance on documents recorded on or transmitted as electronic media is deemed to be unreasonable and unenforceable. The hard copy drawing(s) or other original document(s) produced by GENERAL ENGINEERING COMPANY are the only true contract documents of record. Documents recorded on or transmitted as electronic media may not be used on other projects, other additions to this project, or by third parties without the express written permission of GENERAL ENGINEERING COMPANY. Any unauthorized modification or reuse of the transmitted electronic media shall be at addressee's sole risk, and addressee agrees to defend, indemnify, and hold GENERAL ENGINEERING COMPANY harmless for all claims, injuries, damages, losses, expenses and attorneys' fees arising out of the unauthorized modification or use of such electronic media.

The addressee understands that the use of any project related electronic media constitutes acceptance of the above conditions.

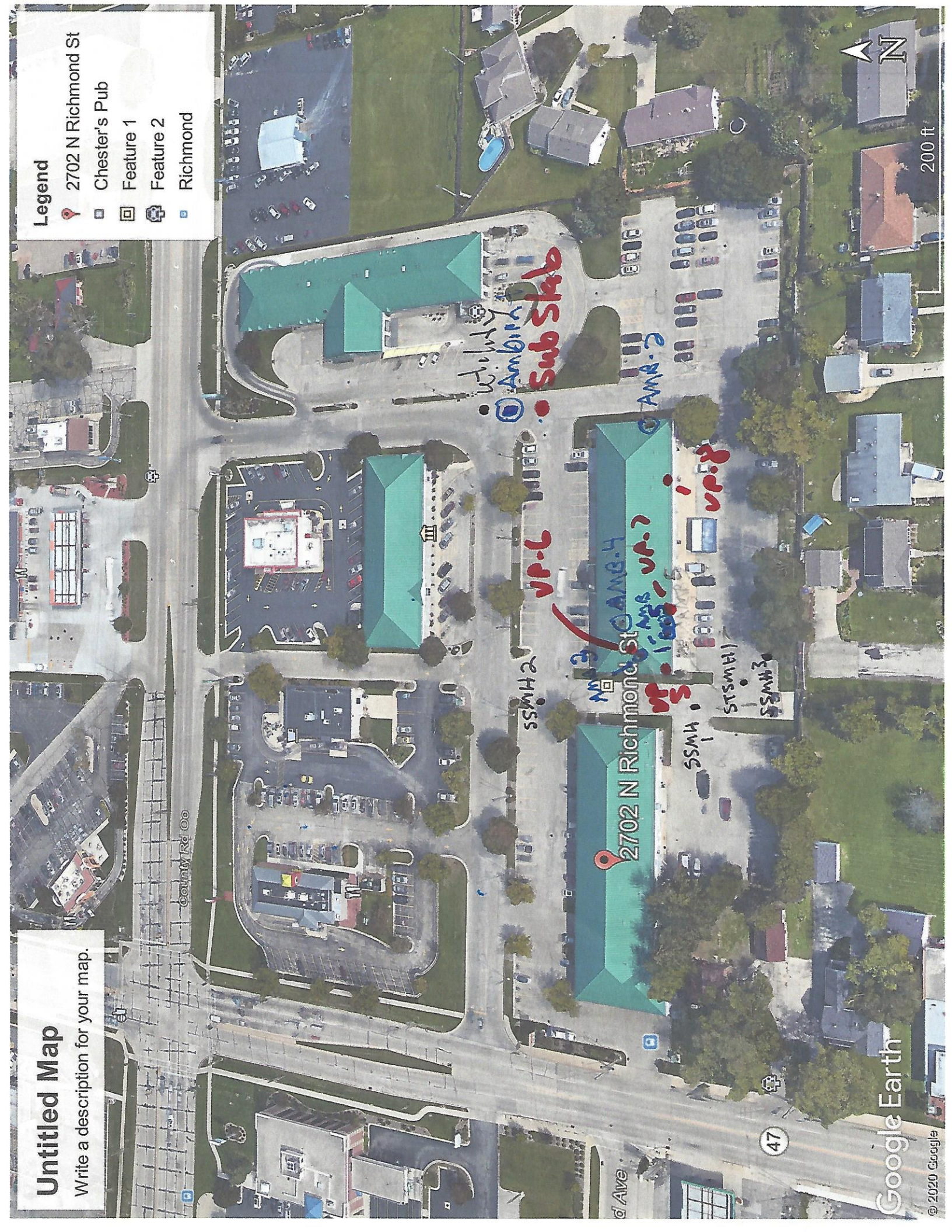
If you have received this email in error please notify the system manager. Finally, the recipient should check this email and any attachments for the presence of viruses. The company accepts no liability for any damage caused by any virus transmitted by this email.

Untitled Map

Write a description for your map.

Legend

- 2702 N Richmond St
- Chester's Pub
- Feature 1
- Feature 2
- Richmond



**TABLE 4
SUMMARY OF SUB-SLAB/UTILITY VAPOR ANALYTICAL RESULTS
FORMER NEIGHBORHOOD CLEANERS
2-0120-82**

TABLE 1 REGIONAL SCREENING LEVEL SUMMARY														
Sample No.	Residential Indoor Air VAL	Residential Sub-Slab Vapor VAL	Small Commercial Indoor Air VAL	Small Commercial Sub-Slab Vapor VRSL	Large Commercial Indoor Air VAL	Large Commercial Sub-Slab Vapor VRSL	VP-1 - ALDI SUB-SLAB 1ST FLOOR - 0.5 HOUR		VP-2 - ALDI SUB-SLAB 1ST FLOOR - 0.5 HOUR		VP-3 - ALDI SUB-SLAB 1ST FLOOR - 0.5 HOUR		VP-4 - ALDI SUB-SLAB 1ST FLOOR - 0.5 HOUR	
							09/03/20	11/03/20	09/03/20	11/03/20	09/03/20	11/03/20	09/03/20	11/03/20
Sampling Date	ug/m3	ug/m3	ug/m3	ug/m3	ug/m3	ug/m3	ug/m3							
VOLATILE ORGANIC COMPOUNDS (VOC) (ug/m3)														
1,1 Dichloroethane	18	600	77	2600	77	7,700	<0.187	<0.187	<0.187	<0.187	<0.187	<0.187	<0.187	<0.187
cis-1,2-Dichloroethene	NE	NE	NE	NE	NE	NE	<0.197	<0.197	<0.197	<0.197	<0.197	<0.197	<0.197	<0.197
trans-1,2-Dichloroethene	NE	NE	NE	NE	NE	NE	<0.231	<0.231	<0.231	<0.231	<0.231	<0.231	<0.231	<0.231
Tetrachloroethylene	42	1400	180	6000	180	18,000	0.95	31.4	4.3	7.1	<0.278	2.24	0.48J	24.3
1,1,1-Trichloroethane	5200	170000	22000	730000	22000	2,200,000	<0.249	<0.249	<0.249	<0.249	<0.249	<0.249	<0.249	<0.249
Trichloroethylene	2.1	70	8.8	290	8.8	880	<0.237	<0.237	<0.237	<0.237	<0.237	<0.237	<0.237	<0.237
Vinyl chloride	1.7	57	28	930	28	2,800	<0.148	<0.148	<0.148	<0.148	<0.148	<0.148	<0.148	<0.148

UG/M³ - Micrograms per Cubic Meter of Air
 Bold indicates analytical results exceeding relevant standard
 NE= Not Established

**TABLE 4
SUMMARY OF SUB-SLAB/UTILITY VAPOR ANALYTICAL RESULTS
FORMER NEIGHBORHOOD CLEANERS
2-0120-82**

TABLE 1 REGIONAL SCREENING LEVEL SUMMARY										
Sample No.	Residential Indoor Air VAL	Residential Sub-Slab Vapor VAL	Small Commercial Indoor Air VAL	Small Commercial Sub-Slab Vapor VRSL	Large Commercial Indoor Air VAL	Large Commercial Sub-Slab Vapor VRSL	VP-5 - PLAY IT AGAIN SPORTS- SHIPPING BAY - 0.5 HOUR	VP-6 - PLAY IT AGAIN SPORTS- SHIPPING BAY - 0.5 HOUR	VP-7 - PLAY IT AGAIN SPORTS- UTILITY CLOSET - 0.5 HOUR	VP-8 - PLAY IT AGAIN SPORTS- UTILITY CLOSET - 0.5 HOUR
Sampling Date							09/03/20	02/01/21	02/01/21	02/01/21
	ug/m3	ug/m3	ug/m3	ug/m3	ug/m3	ug/m3	ug/m3			
<i>VOLATILE ORGANIC COMPOUNDS (VOC) (ug/m3)</i>										
1,1 Dichloroethane	18	600	77	2600	77	7,700	<0.187	<0.187	<0.187	<0.187
cis-1,2-Dichloroethene	NE	NE	NE	NE	NE	NE	<0.197	<0.197	<0.197	<0.197
trans-1,2-Dichloroethene	NE	NE	NE	NE	NE	NE	<0.231	<0.231	<0.231	<0.231
Tetrachloroethylene	42	1400	180	6000	180	18,000	29.1	5.8	1.09	7.9
1,1,1-Trichloroethane	5200	170000	22000	730000	22000	2,200,000	<0.249	<0.249	<0.249	<0.249
Trichloroethylene	2.1	70	8.8	290	8.8	880	4.4	5.8	0.86	3.7
Vinyl chloride	1.7	57	28	930	28	2,800	<0.148	<0.148	<0.148	<0.148

UG/M³- Micrograms per Cubic Meter of Air

Bold indicates analytical results exceeding relevant standard

NE= Not Established

**TABLE 4
SUMMARY OF SUB-SLAB/UTILITY VAPOR ANALYTICAL RESULTS
FORMER NEIGHBORHOOD CLEANERS
2-0120-82**

TABLE 1 REGIONAL SCREENING LEVEL SUMMARY															
Sample No.	Residential Indoor Air VAL	Residential Sub-Slab Vapor VAL	Small Commercial Indoor Air VAL	Small Commercial Sub-Slab Vapor VRSL	Large Commercial Indoor Air VAL	Large Commercial Sub-Slab Vapor VRSL	SANITARY SEWER MANHOLE 1 - 0.5 HOUR (SSMH-1)	SANITARY SEWER MANHOLE 2 - 0.5 HOUR (SSMH-2)	SANITARY SEWER MANHOLE 3 - 0.5 HOUR (SSMH-3)	STORM SEWER MANHOLE 1 - 0.5 HOUR (STSMH-1)	Ambient 1 (Play It Again Sports-Office)- 24 Hour (AMB- 1)	Ambient 2 (Play It Again Sports- Batting Cage)-8 Hour (AMB-2)	Ambient 3 (Play It Again Sports- Shipping Bay)-8 Hour (AMB-3)	Ambient 4 (Play It Again Sports-Sales Floor)-8 Hour (AMB-4)	Ambient 5 (Play It Again Sports- Mens Restroom)- 8 Hour (AMB-5)
Sampling Date							09/03/20	11/03/20	11/03/20	09/03/20	11/03/20	01/27/21	01/27/21	01/27/21	01/27/21
	ug/m3	ug/m3	ug/m3	ug/m3	ug/m3	ug/m3	ug/m3								
VOLATILE ORGANIC COMPOUNDS (VOC) (ug/m3)															
1,1 Dichloroethane	18	600	77	2600	77	7,700	<0.187	<0.187	<0.187	<0.187	<0.187	<0.187	<0.187	<0.187	<0.187
cis-1,2-Dichloroethene	NE	NE	NE	NE	NE	NE	<0.197	<0.197	<0.197	<0.197	<0.197	<0.197	<0.197	<0.197	<0.197
trans-1,2-Dichloroethene	NE	NE	NE	NE	NE	NE	<0.231	<0.231	<0.231	<0.231	<0.231	<0.231	<0.231	<0.231	<0.231
Tetrachloroethylene	42	1400	180	6000	180	18,000	38	3.4	2.99	12	0.68J	0.41J	0.48J	0.41J	0.41J
1,1,1-Trichloroethane	5200	170000	22000	730000	22000	2,200,000	<0.249	<0.249	<0.249	<0.249	<0.249	<0.249	<0.249	<0.249	<0.249
Trichloroethylene	2.1	70	8.8	290	8.8	880	50	0.64J	0.37J	2.73	50	65	60	62	58
Vinyl chloride	1.7	57	28	930	28	2,800	<0.148	<0.148	<0.148	<0.148	<0.148	<0.148	<0.148	<0.148	<0.148

UG/M³: Micrograms per Cubic Meter of Air
 Bold indicates analytical results exceeding relevant standard
 NE= Not Established