

**From:** Schroyer, Blaine R. <Blaine.Schroyer@terracon.com>  
**Sent:** Tuesday, February 25, 2020 10:23 AM  
**To:** Egan, Alice M - DNR  
**Cc:** Chabela, Lucas P  
**Subject:** RE: 601 Ryan Street, Pewaukee GLC/NAR request  
**Attachments:** 58197210 EX4 Vapor Sample Locations.pdf

Alice – Sorry for the delay. Mondays...both those locations were just inside an exterior footing walls. See attached.

**Blaine R. Schroyer, P.E.**  
**Senior Principal | Office Manager**

**Terracon**

9856 South 57th Street | Franklin, Wisconsin 53132  
P (414) 423 0255 | Direct (414) 209 7631 | M (920) 205 0011  
[Blaine.Schroyer@Terracon.com](mailto:Blaine.Schroyer@Terracon.com) | [www.Terracon.com](http://www.Terracon.com)

---

**From:** Egan, Alice M - DNR <[Alice.Egan@wisconsin.gov](mailto:Alice.Egan@wisconsin.gov)>  
**Sent:** Monday, February 24, 2020 3:02 PM  
**To:** Schroyer, Blaine R. <[Blaine.Schroyer@terracon.com](mailto:Blaine.Schroyer@terracon.com)>  
**Subject:** 601 Ryan Street, Pewaukee GLC/NAR request

Hi Blaine,

Where are VP-2 and VP-3 in relation to the outside walls of the building? I am trying to understand where they are in relation to the footing walls.

**We are committed to service excellence.**

Visit our survey at <http://dnr.wi.gov/customersurvey> to evaluate how I did.

**Alice Egan**

Hydrogeologist

Wisconsin Department of Natural Resources  
Bureau for Remediation and Redevelopment  
Wisconsin Department of Natural Resources  
Phone: 414-263-8626

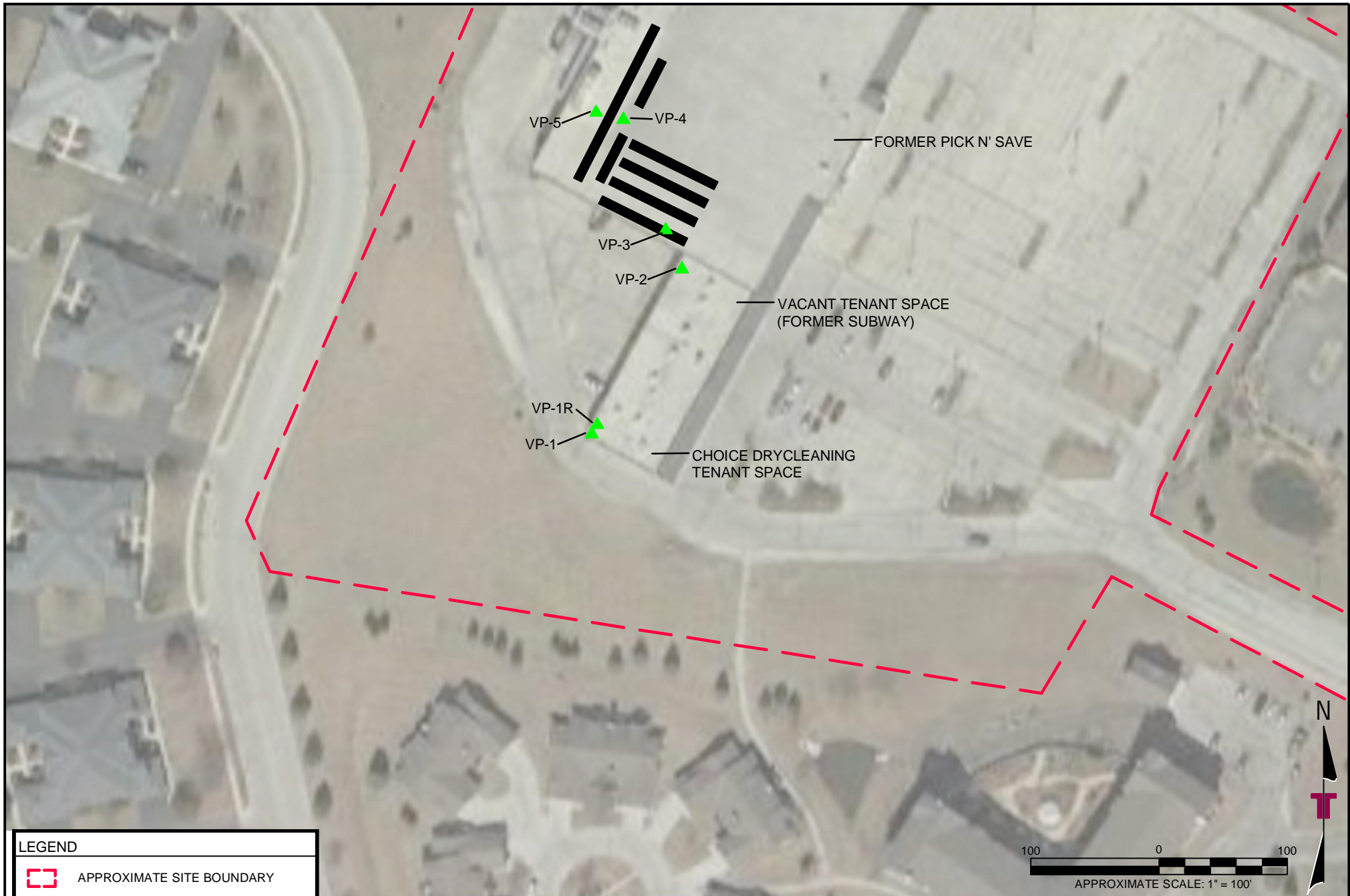
[alice.egan@wisconsin.gov](mailto:alice.egan@wisconsin.gov)



Terracon provides environmental, facilities, geotechnical, and materials consulting engineering services delivered with responsiveness, resourcefulness, and reliability.

---

*Private and confidential as detailed here ([www.terracon.com/disclaimer](http://www.terracon.com/disclaimer)). If you cannot access the hyperlink, please e-mail sender.*






LEGEND	
	APPROXIMATE SITE BOUNDARY
	SUB-SLAB VAPOR SAMPLE POINT
	APPROXIMATE COOLER / FREEZER LOCATIONS

IMAGE SOURCE: GOOGLE EARTH PRO  
 DIAGRAM IS FOR GENERAL LOCATION ONLY, AND IS NOT INTENDED FOR CONSTRUCTION PURPOSES

Project Mngr:	LPC	Project No.	58197210
Drawn By:	PJS	Scale:	AS SHOWN
Checked By:	EMN	File No.	58187210C1
Approved By:	BRS	Date:	12/2019

**Terracon**  
 Consulting Engineers and Scientists

9856 SOUTH 57th STREET FRANKLIN, WI 53132  
 PH. (414) 423-0255 FAX. (414) 423-0566

VAPOR SAMPLE LOCATIONS (11-20-2019)
LAKE COUNTRY SQUARE 601 RYAN STREET PEWAUKEE, WISCONSIN

EXHIBIT
4