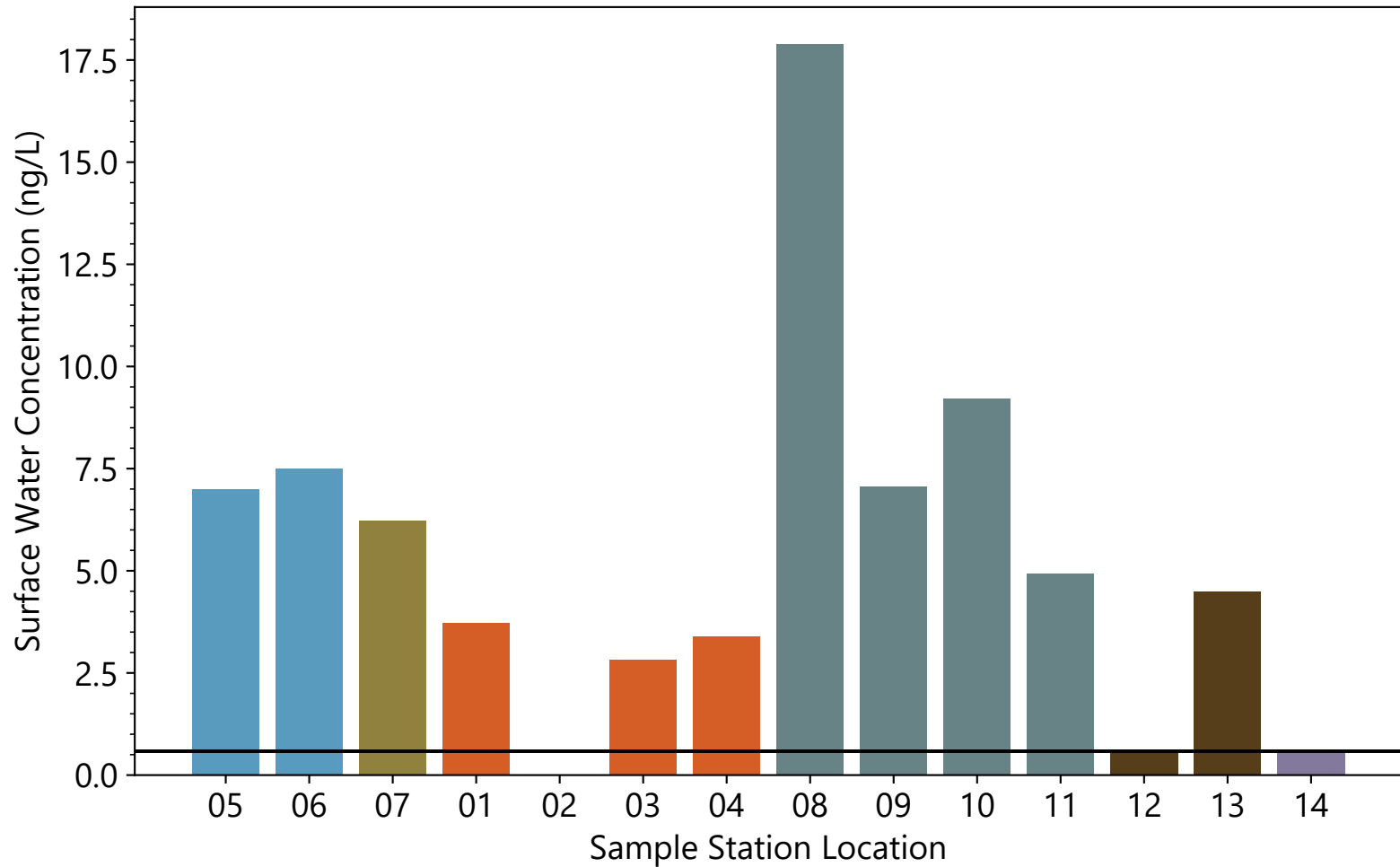


Notes:
 1. Non-detects were treated as the method detection limit and field duplicates were averaged with parent samples.
 2. Hatching represents samples that were non-detects.
 3. Horizontal line represents the average method detection limit for the analyte.
 4. Blank values were classified as not reportable after data validation.

■ Menomonee River ■ Kinnickinnic River
■ South Menomonee Canal ■ Harbor
■ Milwaukee River ■ Lake Michigan



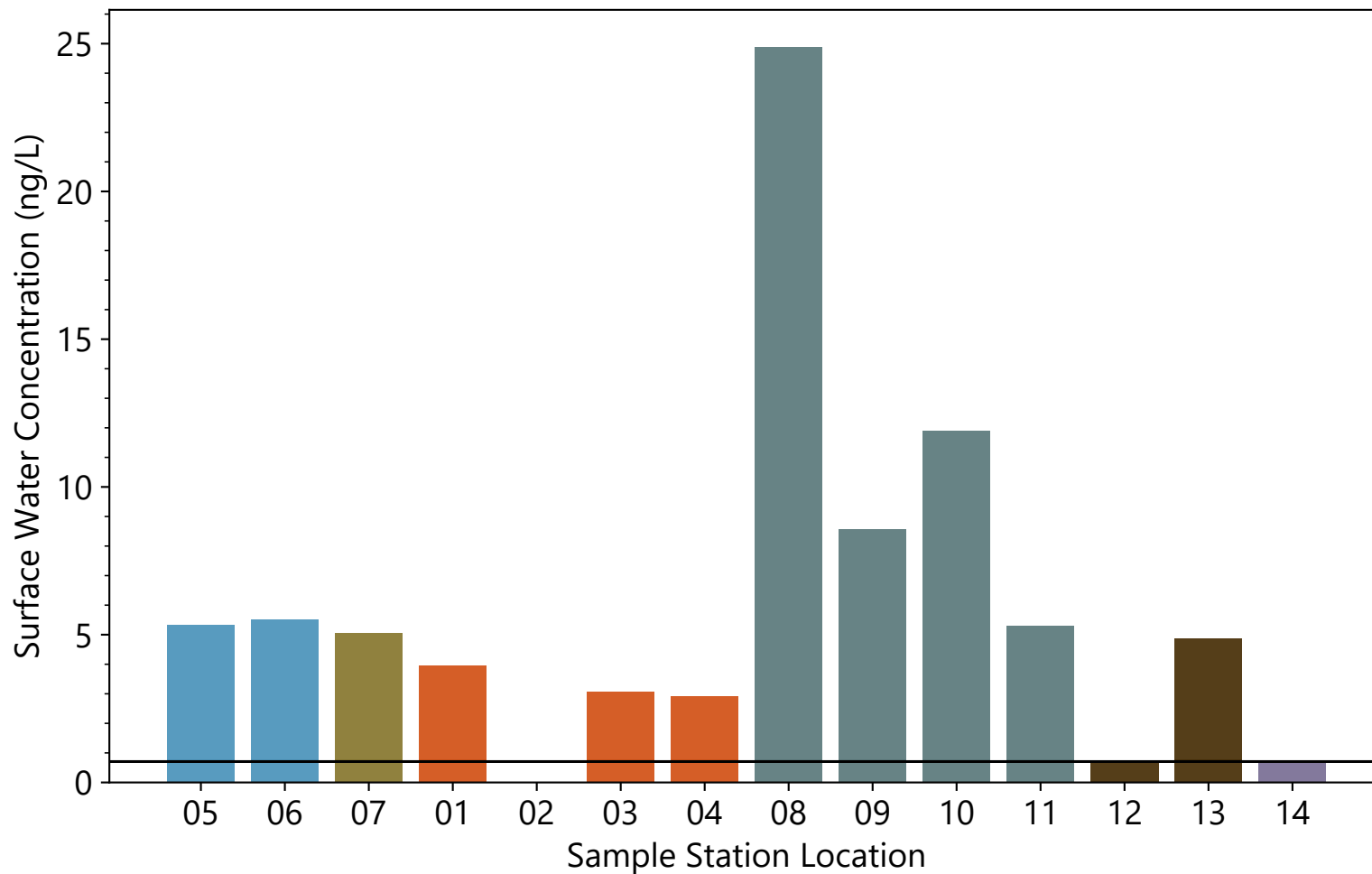


Notes:
 1. Non-detects were treated as the method detection limit and field duplicates were averaged with parent samples.
 2. Hatching represents samples that were non-detects.
 3. Horizontal line represents the average method detection limit for the analyte.
 4. Blank values were classified as not reportable after data validation.

■ Menomonee River	■ Kinnickinnic River
■ South Menomonee Canal	■ Harbor
■ Milwaukee River	■ Lake Michigan

Publish Date: 03/06/2020 11:06 AM | User: SYR-SCOL
 File Path: \\Helios\AQ\D_Drive\Projects\WL_DNR\Milwaukee_AOC\Design_Analysis\PFAS\Barplots\PFAS_barplots.py

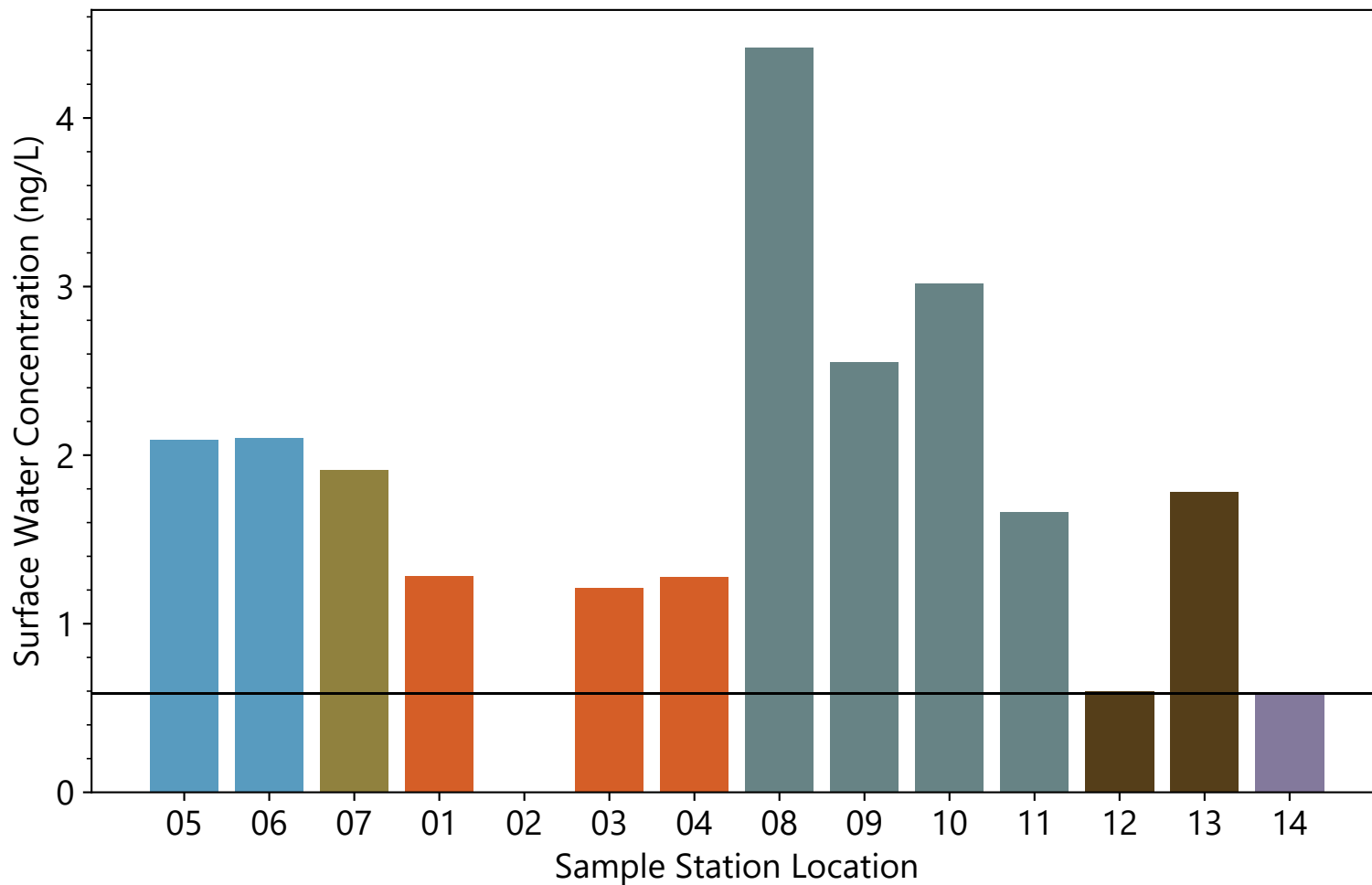




Notes:
 1. Non-detects were treated as the method detection limit and field duplicates were averaged with parent samples.
 2. Hatching represents samples that were non-detects.
 3. Horizontal line represents the average method detection limit for the analyte.
 4. Blank values were classified as not reportable after data validation.

■ Menomonee River	■ Kinnickinnic River
■ South Menomonee Canal	■ Harbor
■ Milwaukee River	■ Lake Michigan



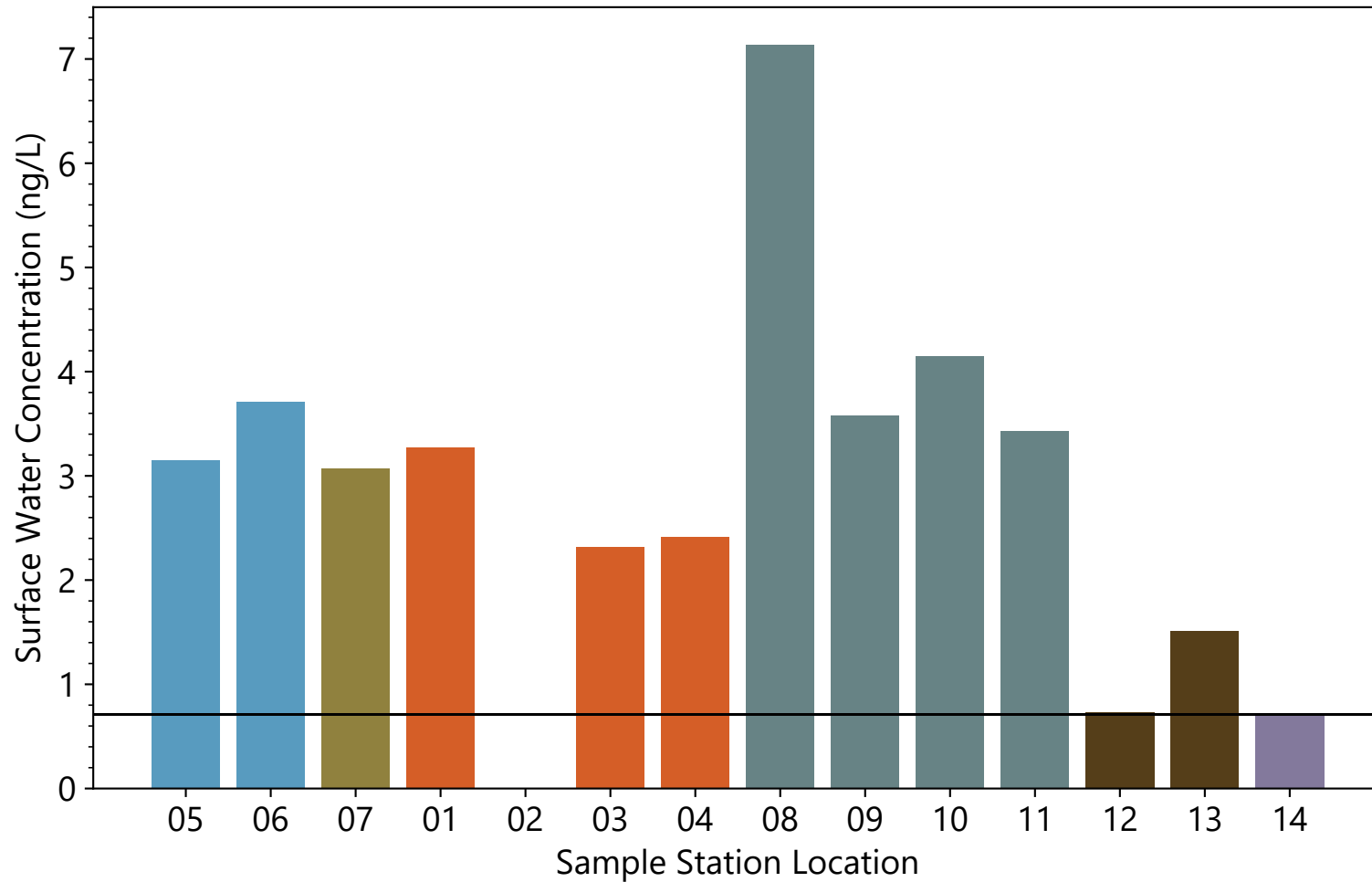


Notes:
 1. Non-detects were treated as the method detection limit and field duplicates were averaged with parent samples.
 2. Hatching represents samples that were non-detects.
 3. Horizontal line represents the average method detection limit for the analyte.
 4. Blank values were classified as not reportable after data validation.

■ Menomonee River	■ Kinnickinnic River
■ South Menomonee Canal	■ Harbor
■ Milwaukee River	■ Lake Michigan

Publish Date: 03/06/2020 11:06 AM | User: SYR-SCOL
 File Path: \\Helios\AQ\D_Drive\Projects\WL_DNR\Milwaukee_AOC\Design_Analysis\PFAS\Barplots\PFAS_barplots.py



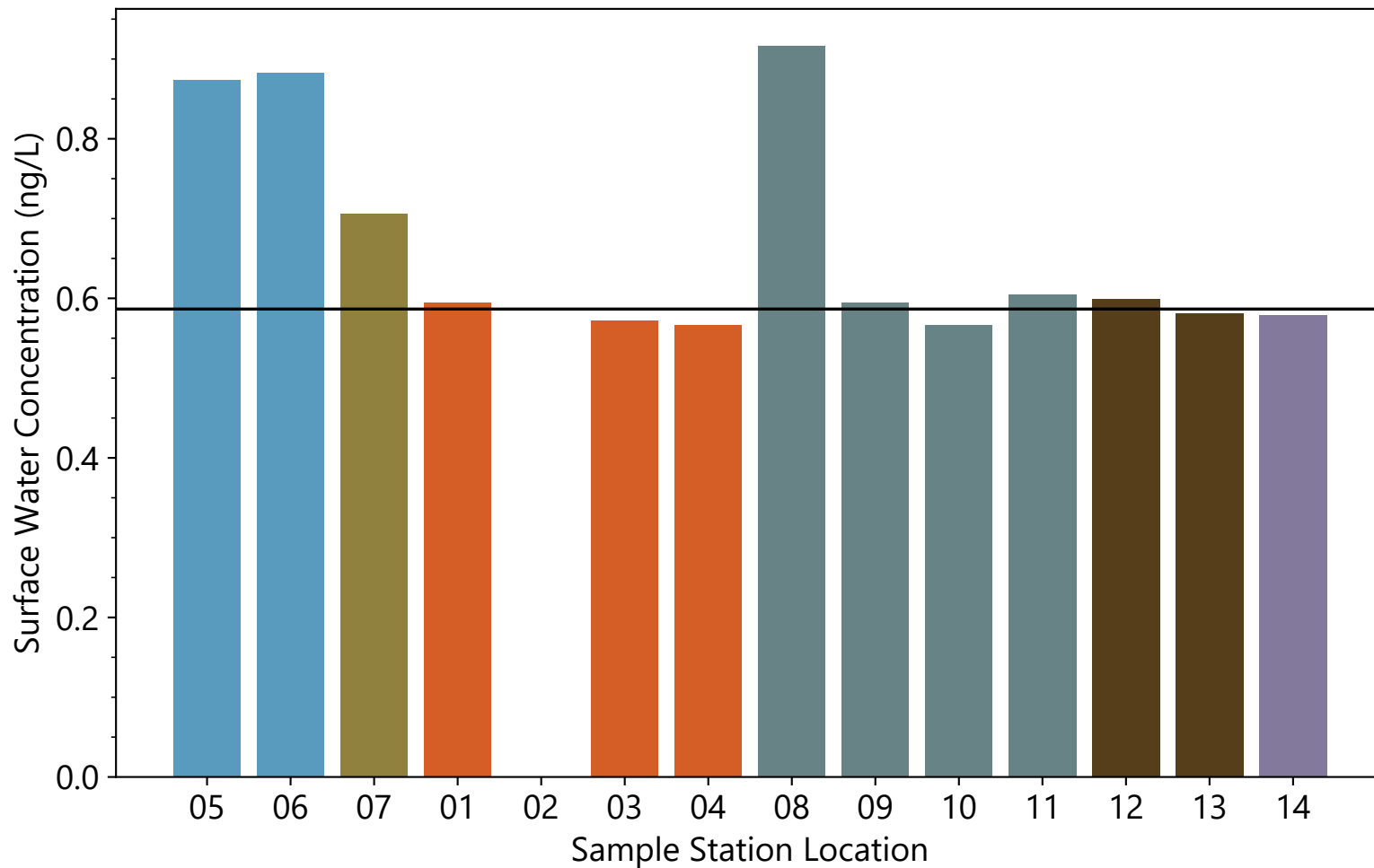


Notes:
 1. Non-detects were treated as the method detection limit and field duplicates were averaged with parent samples.
 2. Hatching represents samples that were non-detects.
 3. Horizontal line represents the average method detection limit for the analyte.
 4. Blank values were classified as not reportable after data validation.

■ Menomonee River	■ Kinnickinnic River
■ South Menomonee Canal	■ Harbor
■ Milwaukee River	■ Lake Michigan

Publish Date: 03/06/2020 11:06 AM | User: SYR-SCOL
 File Path: \\Helios\AQ\D_Drive\Projects\WL_DNR\Milwaukee_AOC\Design_Analysis\PFAS\Barplots\PFAS_barplots.py



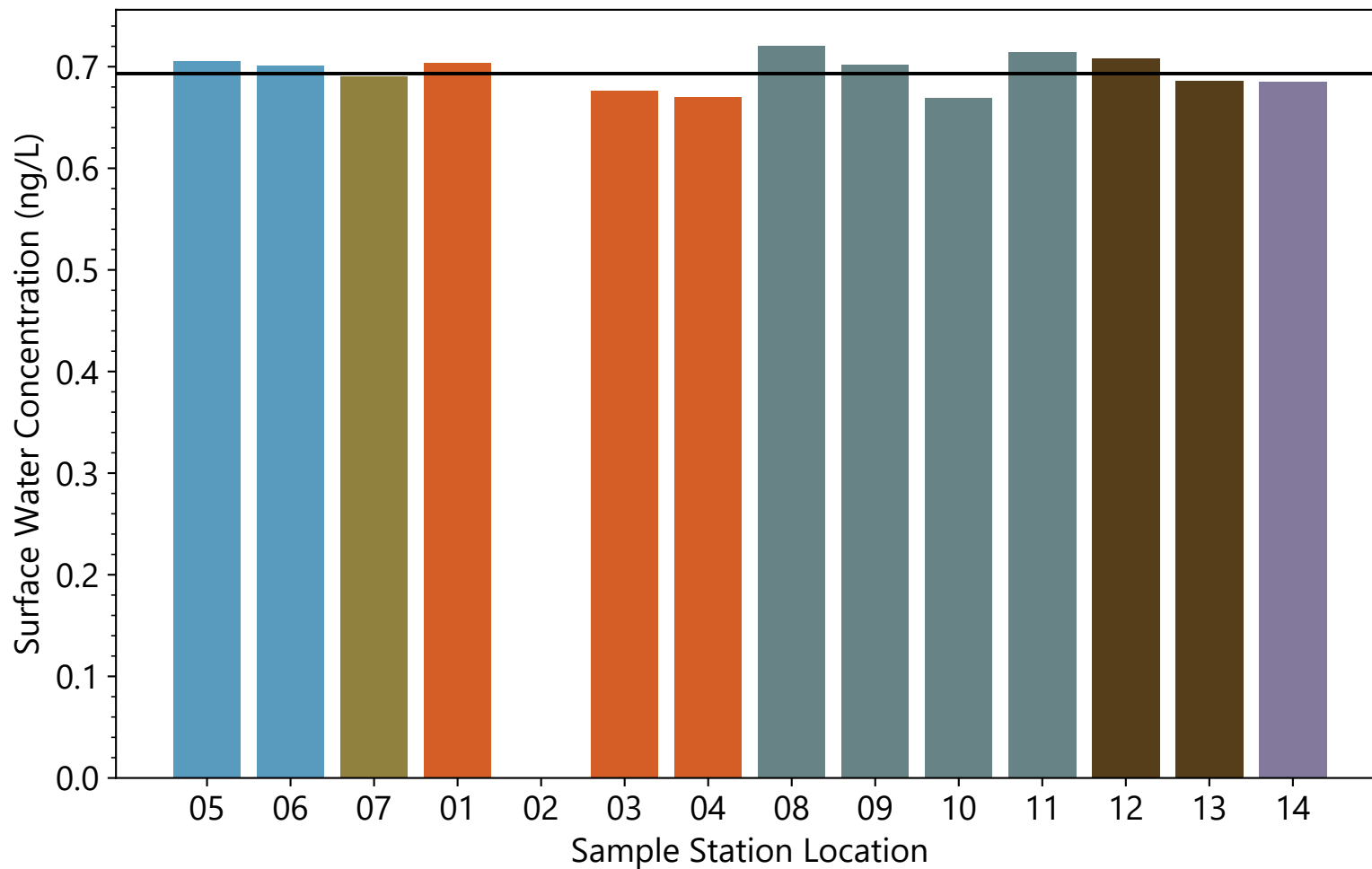


Notes:
 1. Non-detects were treated as the method detection limit and field duplicates were averaged with parent samples.
 2. Hatching represents samples that were non-detects.
 3. Horizontal line represents the average method detection limit for the analyte.
 4. Blank values were classified as not reportable after data validation.

■ Menomonee River	■ Kinnickinnic River
■ South Menomonee Canal	■ Harbor
■ Milwaukee River	■ Lake Michigan

Publish Date: 03/06/2020 11:06 AM | User: SYR-SCOL
 File Path: \\Helios\AQ\D_Drive\Projects\WL_DNR\Milwaukee_AOC\Design_Analysis\PFAS\Barplots\PFAS_barplots.py



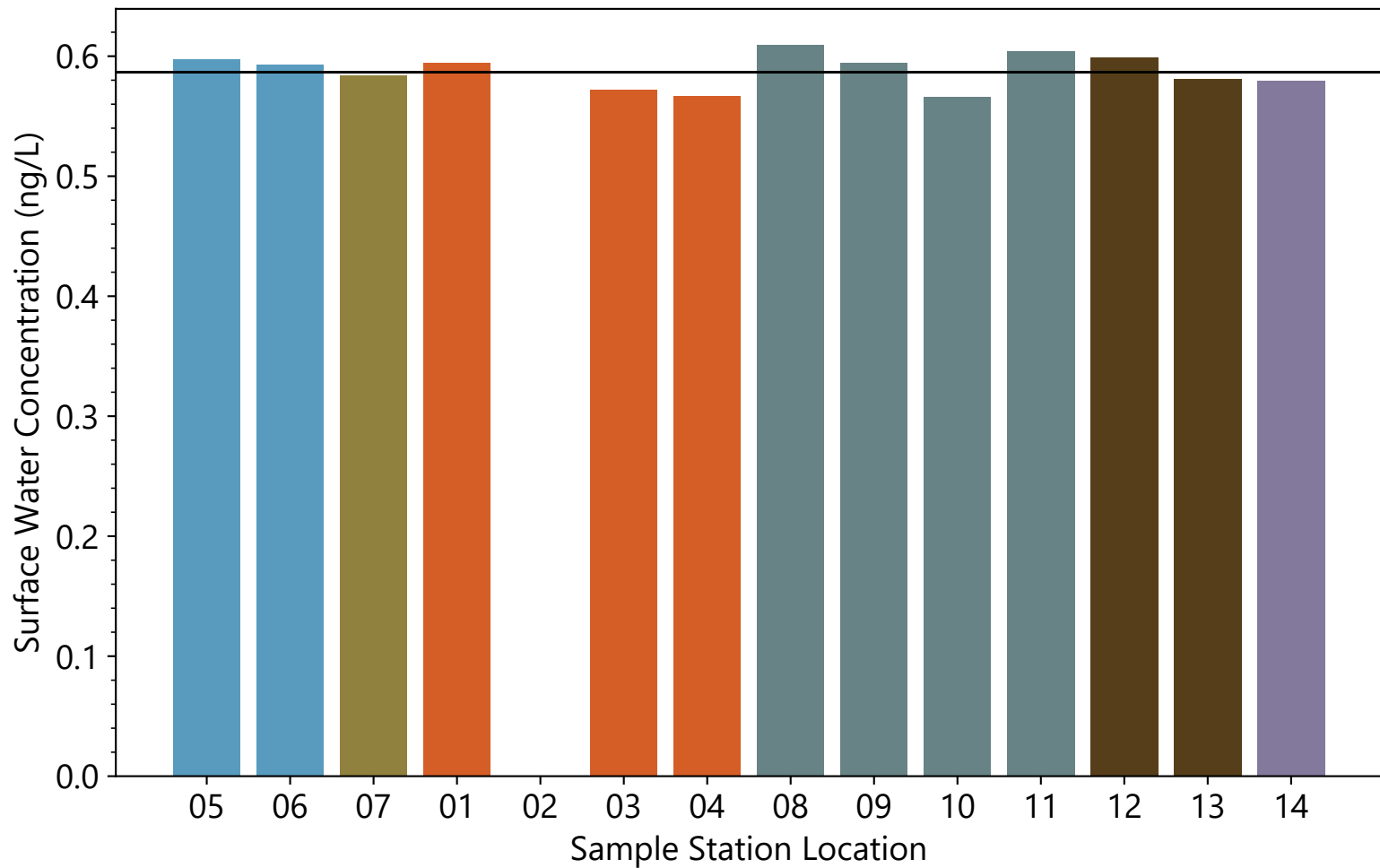


Notes:
 1. Non-detects were treated as the method detection limit and field duplicates were averaged with parent samples.
 2. Hatching represents samples that were non-detects.
 3. Horizontal line represents the average method detection limit for the analyte.
 4. Blank values were classified as not reportable after data validation.

■ Menomonee River	■ Kinnickinnic River
■ South Menomonee Canal	■ Harbor
■ Milwaukee River	■ Lake Michigan

Publish Date: 03/06/2020 11:06 AM | User: SYR-SCOL
 File Path: \\Helios\AQ\D_Drive\Projects\WL_DNR\Milwaukee_AOC\Design_Analysis\PFAS\Barplots\PFAS_barplots.py



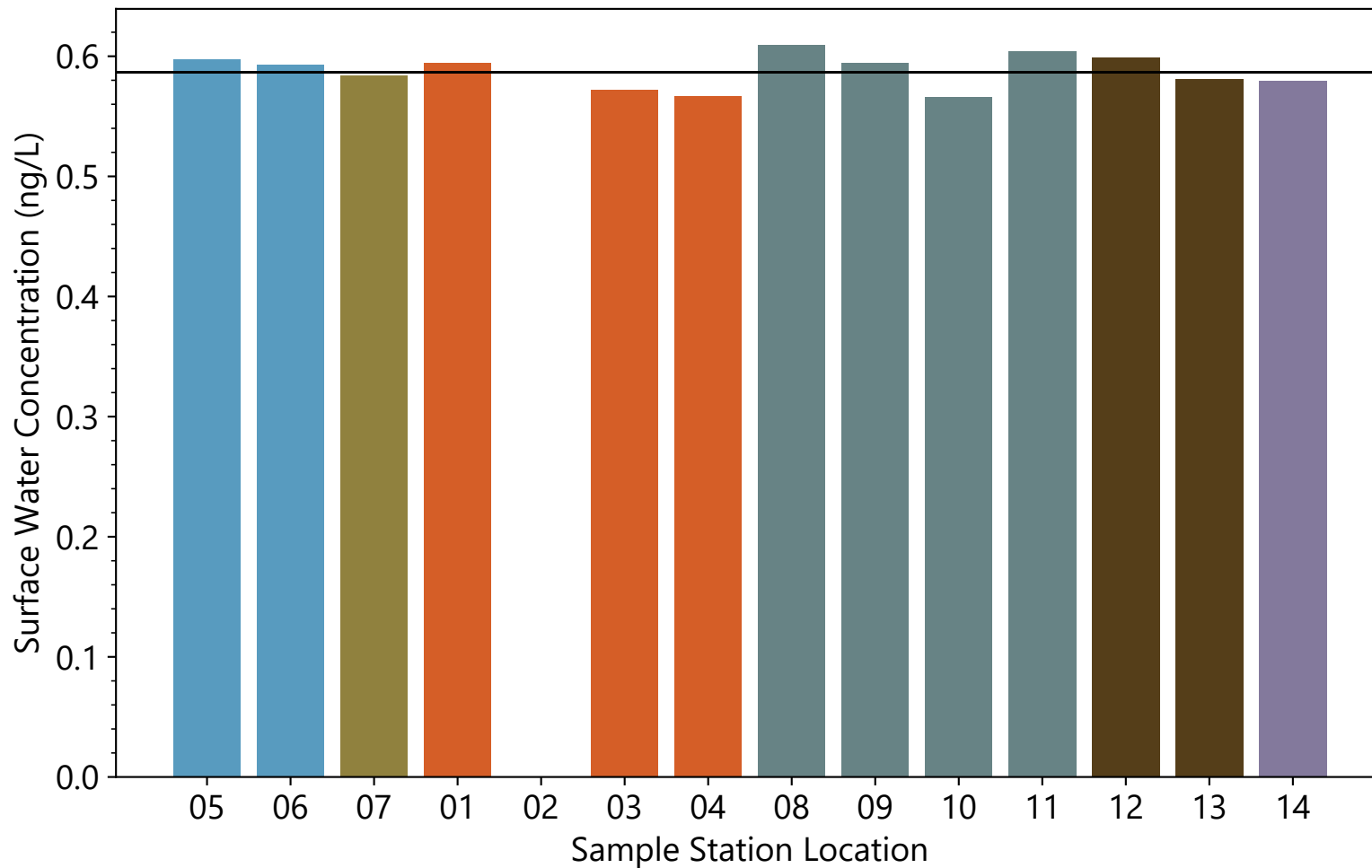


Notes:

- 1. Non-detects were treated as the method detection limit and field duplicates were averaged with parent samples.
- 2. Hatching represents samples that were non-detects.
- 3. Horizontal line represents the average method detection limit for the analyte.
- 4. Blank values were classified as not reportable after data validation.

- Menomonee River
- South Menomonee Canal
- Milwaukee River
- Kinnickinnic River
- Harbor
- Lake Michigan

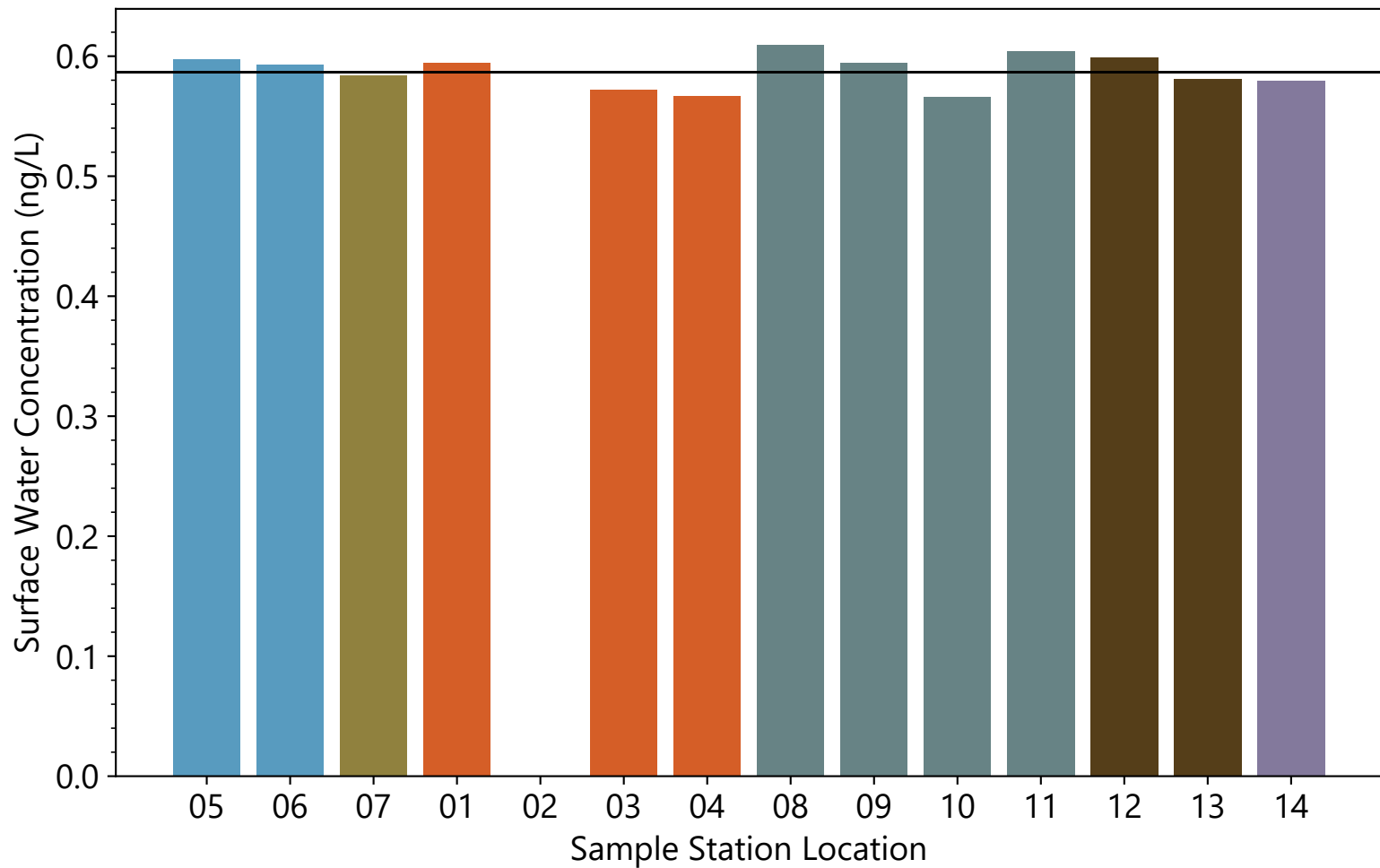




Notes:
 1. Non-detects were treated as the method detection limit and field duplicates were averaged with parent samples.
 2. Hatching represents samples that were non-detects.
 3. Horizontal line represents the average method detection limit for the analyte.
 4. Blank values were classified as not reportable after data validation.

- Menomonee River
■ South Menomonee Canal
■ Milwaukee River
- Kinnickinnic River
■ Harbor
■ Lake Michigan

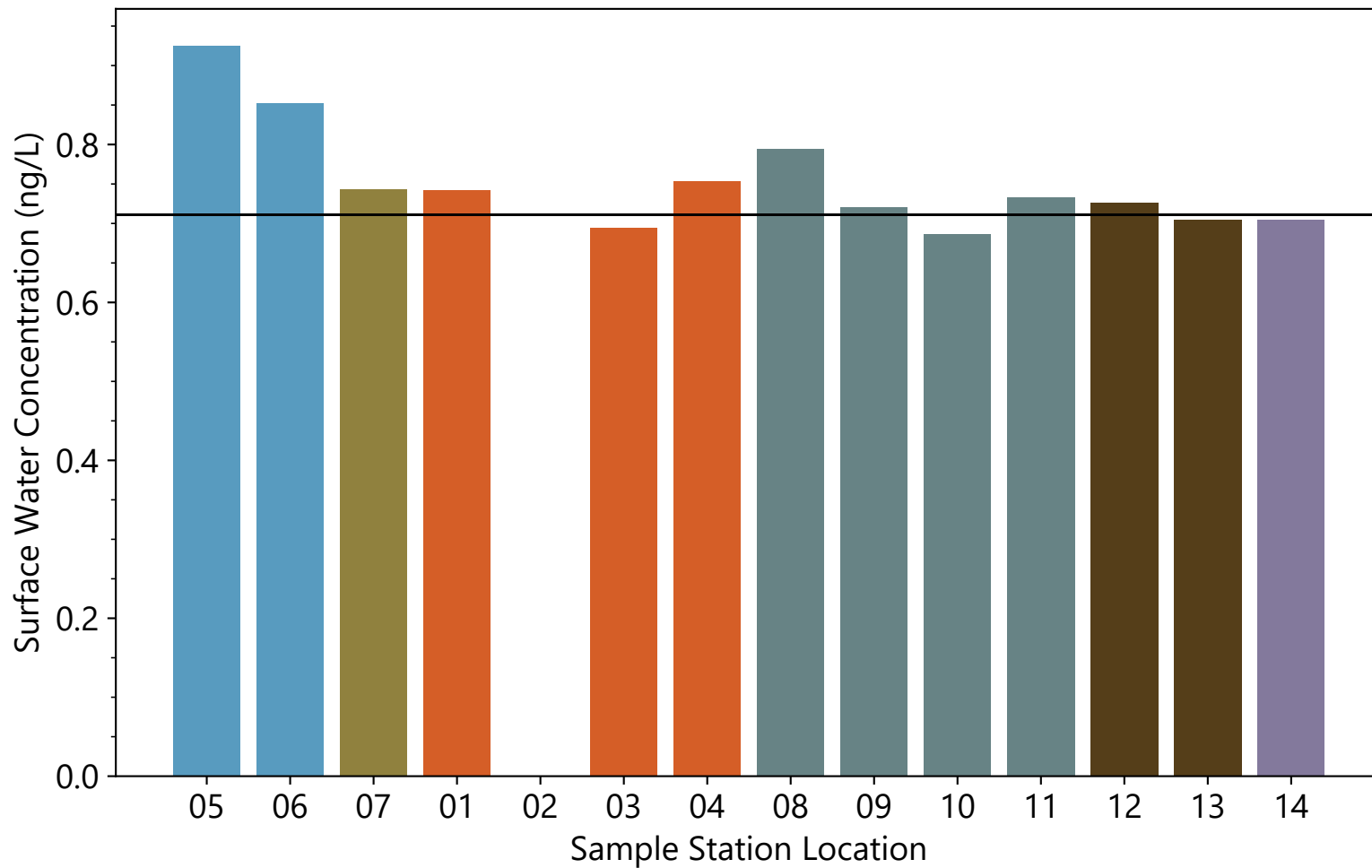




Notes:
1. Non-detects were treated as the method detection limit and field duplicates were averaged with parent samples.
2. Hatching represents samples that were non-detects.
3. Horizontal line represents the average method detection limit for the analyte.
4. Blank values were classified as not reportable after data validation.

- Menomonee River
- South Menomonee Canal
- Milwaukee River
- Kinnickinnic River
- Harbor
- Lake Michigan





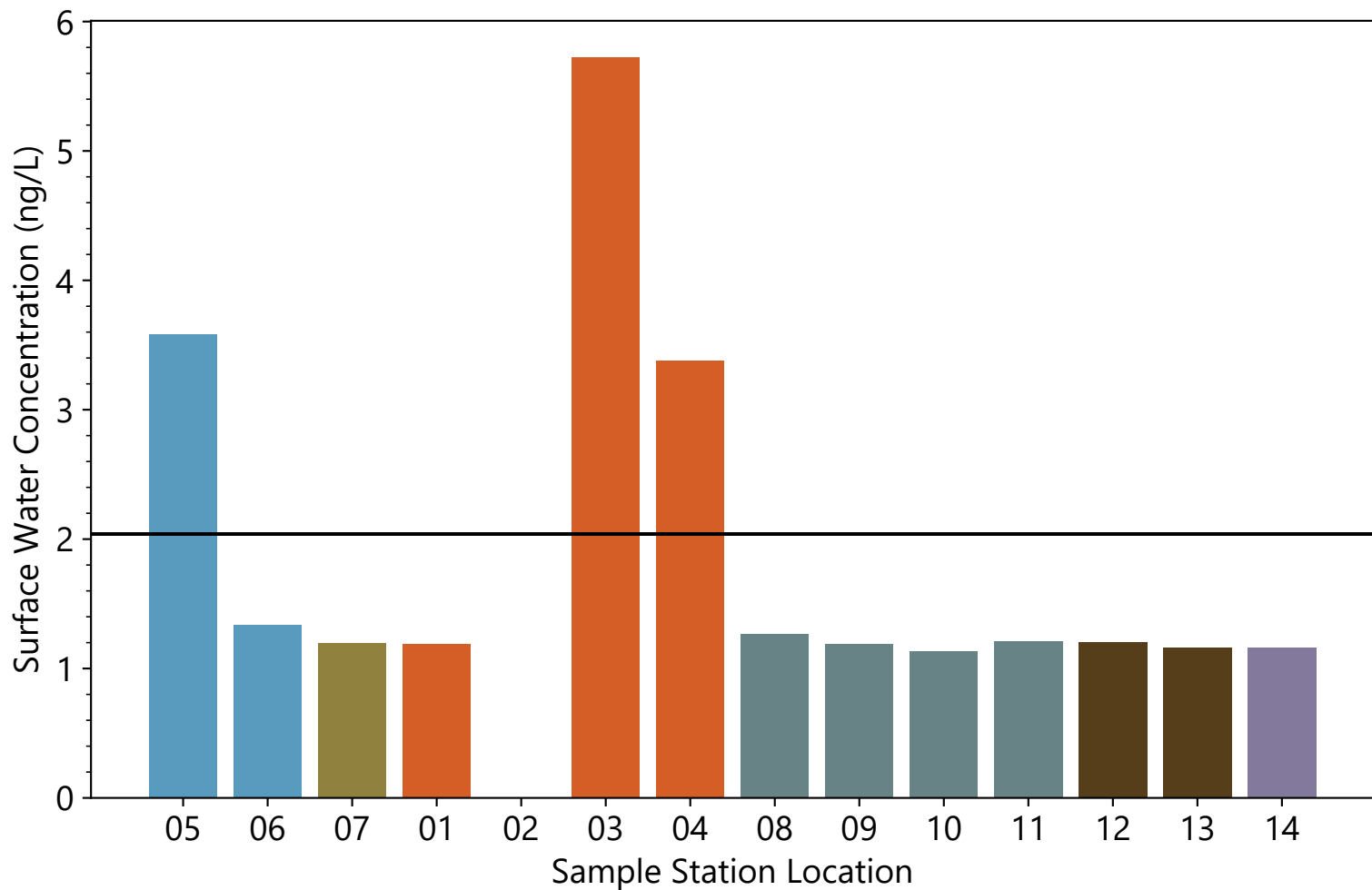
Notes:

1. Non-detects were treated as the method detection limit and field duplicates were averaged with parent samples.
2. Hatching represents samples that were non-detects.
3. Horizontal line represents the average method detection limit for the analyte.
4. Blank values were classified as not reportable after data validation.

- | | |
|--|--|
| ■ Menomonee River | ■ Kinnickinnic River |
| ■ South Menomonee Canal | ■ Harbor |
| ■ Milwaukee River | ■ Lake Michigan |

Publish Date: 03/06/2020 11:06 AM | User: SYR-SCOL
 File Path: \\Helios\AQ\D_Drive\Projects\WL_DNR\Milwaukee_AOC\Design_Analysis\PFAS\Barplots\PFAS_barplots.py



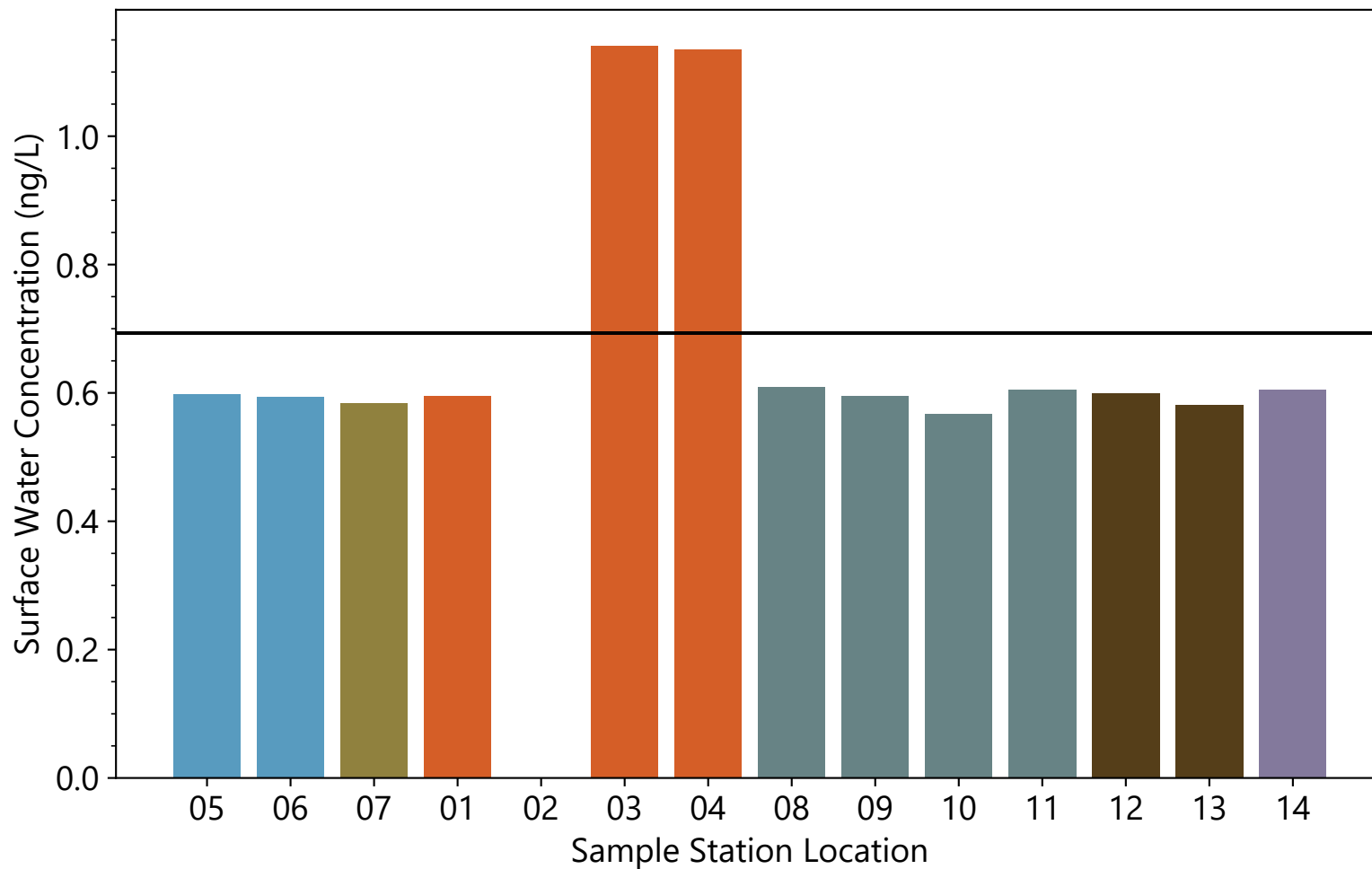


Notes:
1. Non-detects were treated as the method detection limit and field duplicates were averaged with parent samples.
2. Hatching represents samples that were non-detects.
3. Horizontal line represents the average method detection limit for the analyte.
4. Blank values were classified as not reportable after data validation.

- Menomonee River
- South Menomonee Canal
- Milwaukee River
- Kinnickinnic River
- Harbor
- Lake Michigan

Publish Date: 03/06/2020 11:06 AM | User: SYR-SCOL
File Path: \\Helios\AQ\D_Drive\Projects\WL_DNR\Milwaukee_AOC\Design_Analysis\PFAS\Barplots\PFAS_barplots.py



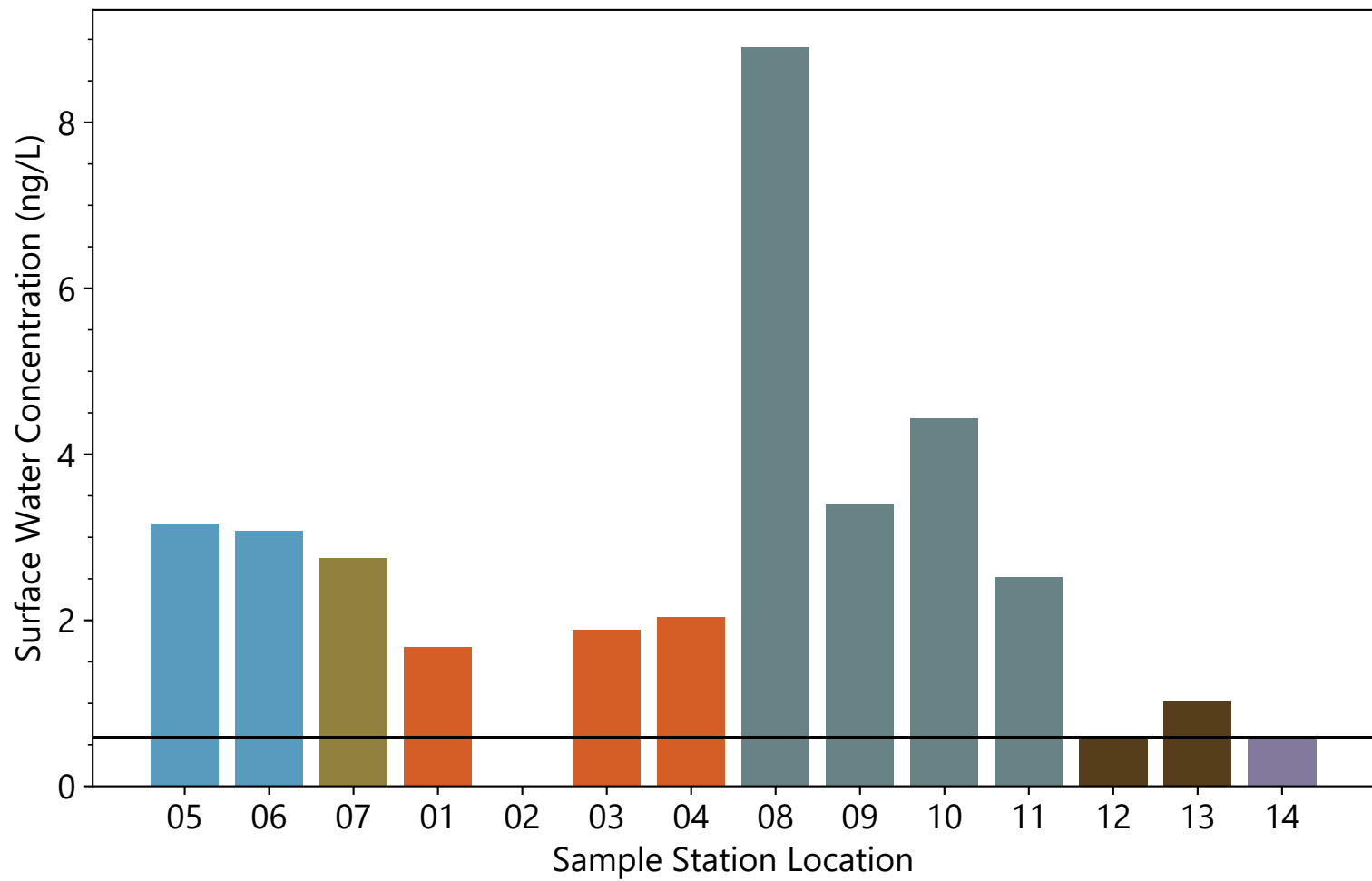


Notes:
 1. Non-detects were treated as the method detection limit and field duplicates were averaged with parent samples.
 2. Hatching represents samples that were non-detects.
 3. Horizontal line represents the average method detection limit for the analyte.
 4. Blank values were classified as not reportable after data validation.

- Menomonee River
- Kinnickinnic River
- South Menomonee Canal
- Harbor
- Milwaukee River
- Lake Michigan

Publish Date: 03/06/2020 11:06 AM | User: SYR-SCOL
 File Path: \\Helios\AQ\D_Drive\Projects\WL_DNR\Milwaukee_AOC\Design_Analysis\PFAS\Barplots\PFAS_barplots.py



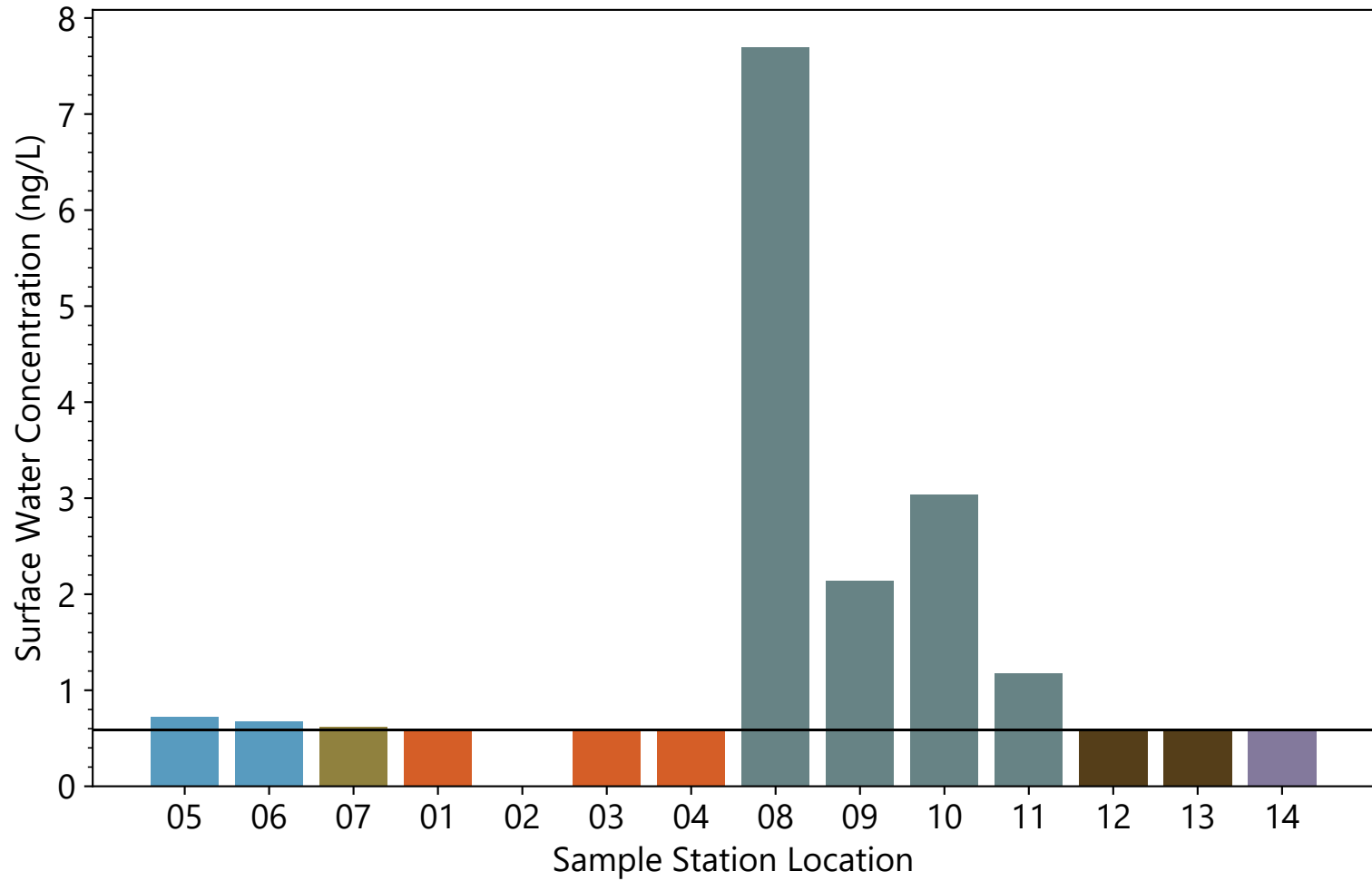


Notes:
 1. Non-detects were treated as the method detection limit and field duplicates were averaged with parent samples.
 2. Hatching represents samples that were non-detects.
 3. Horizontal line represents the average method detection limit for the analyte.
 4. Blank values were classified as not reportable after data validation.

■ Menomonee River	■ Kinnickinnic River
■ South Menomonee Canal	■ Harbor
■ Milwaukee River	■ Lake Michigan

Publish Date: 03/06/2020 11:06 AM | User: SYR-SCOL
 File Path: \\Helios\AQ\D_Drive\Projects\WL_DNR\Milwaukee_AOC\Design_Analysis\PFAS\Barplots\PFAS_barplots.py



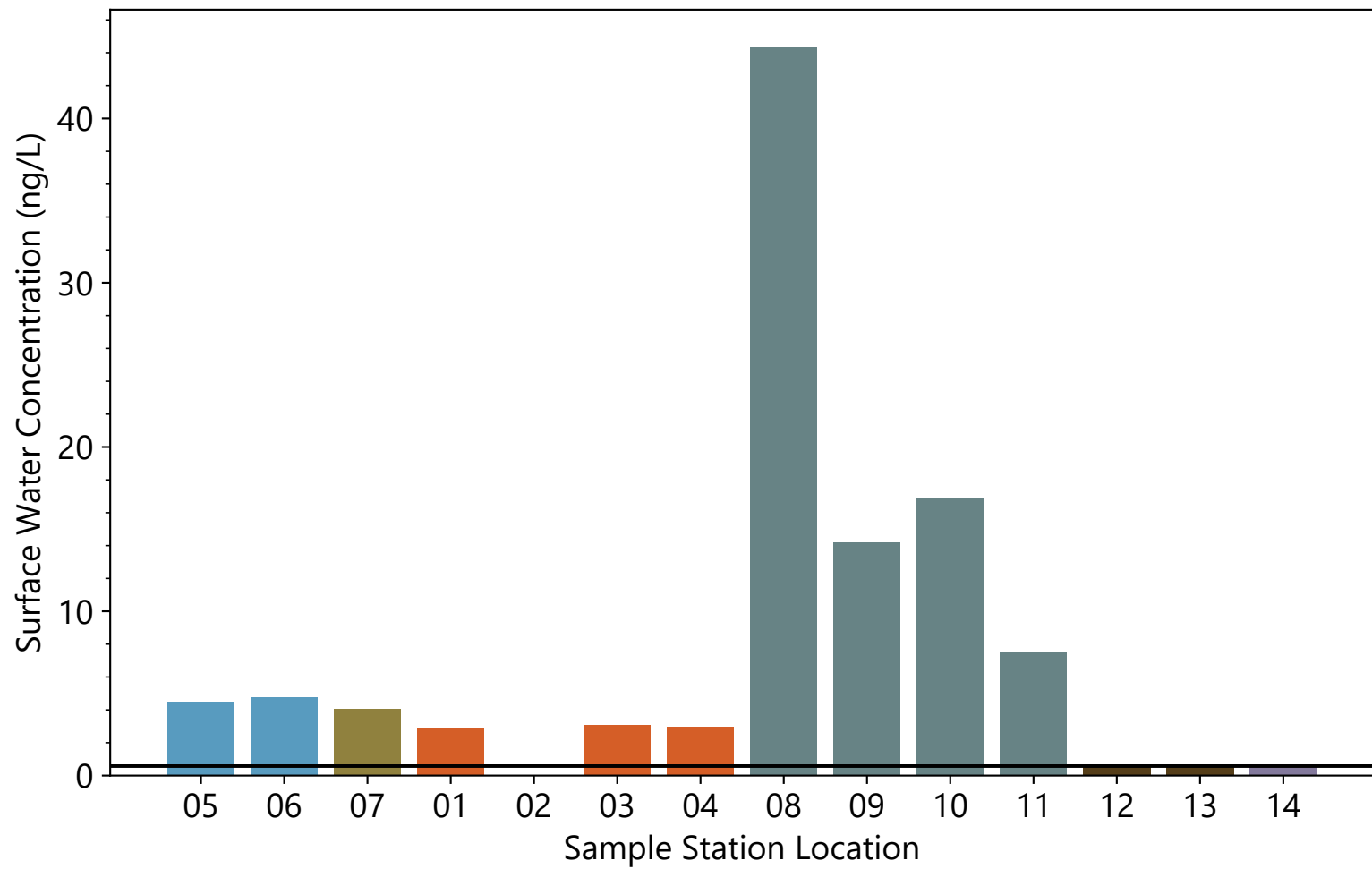


Notes:
 1. Non-detects were treated as the method detection limit and field duplicates were averaged with parent samples.
 2. Hatching represents samples that were non-detects.
 3. Horizontal line represents the average method detection limit for the analyte.
 4. Blank values were classified as not reportable after data validation.

■ Menomonee River	■ Kinnickinnic River
■ South Menomonee Canal	■ Harbor
■ Milwaukee River	■ Lake Michigan

Publish Date: 03/06/2020 11:06 AM | User: SYR-SCOL
 File Path: \\Helios\AQ\D_Drive\Projects\WL_DNR\Milwaukee_AOC\Design_Analysis\PFAS\Barplots\PFAS_barplots.py



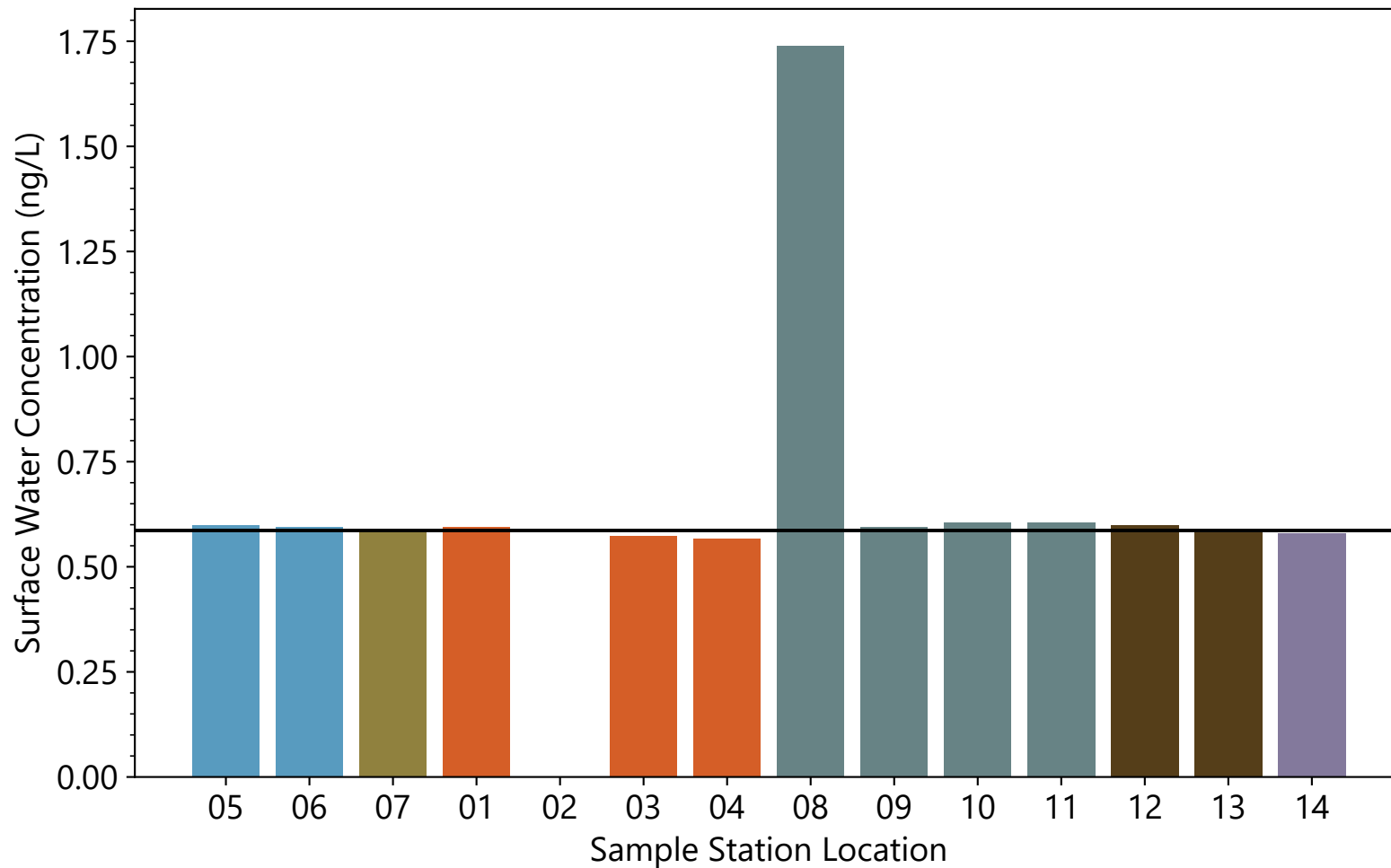


Notes:
 1. Non-detects were treated as the method detection limit and field duplicates were averaged with parent samples.
 2. Hatching represents samples that were non-detects.
 3. Horizontal line represents the average method detection limit for the analyte.
 4. Blank values were classified as not reportable after data validation.

■ Menomonee River	■ Kinnickinnic River
■ South Menomonee Canal	■ Harbor
■ Milwaukee River	■ Lake Michigan

Publish Date: 03/06/2020 11:06 AM | User: SYR-SCOL
 File Path: \\Helios\AQ\D_Drive\Projects\WL_DNR\Milwaukee_AOC\Design_Analysis\PFAS\Barplots\PFAS_barplots.py

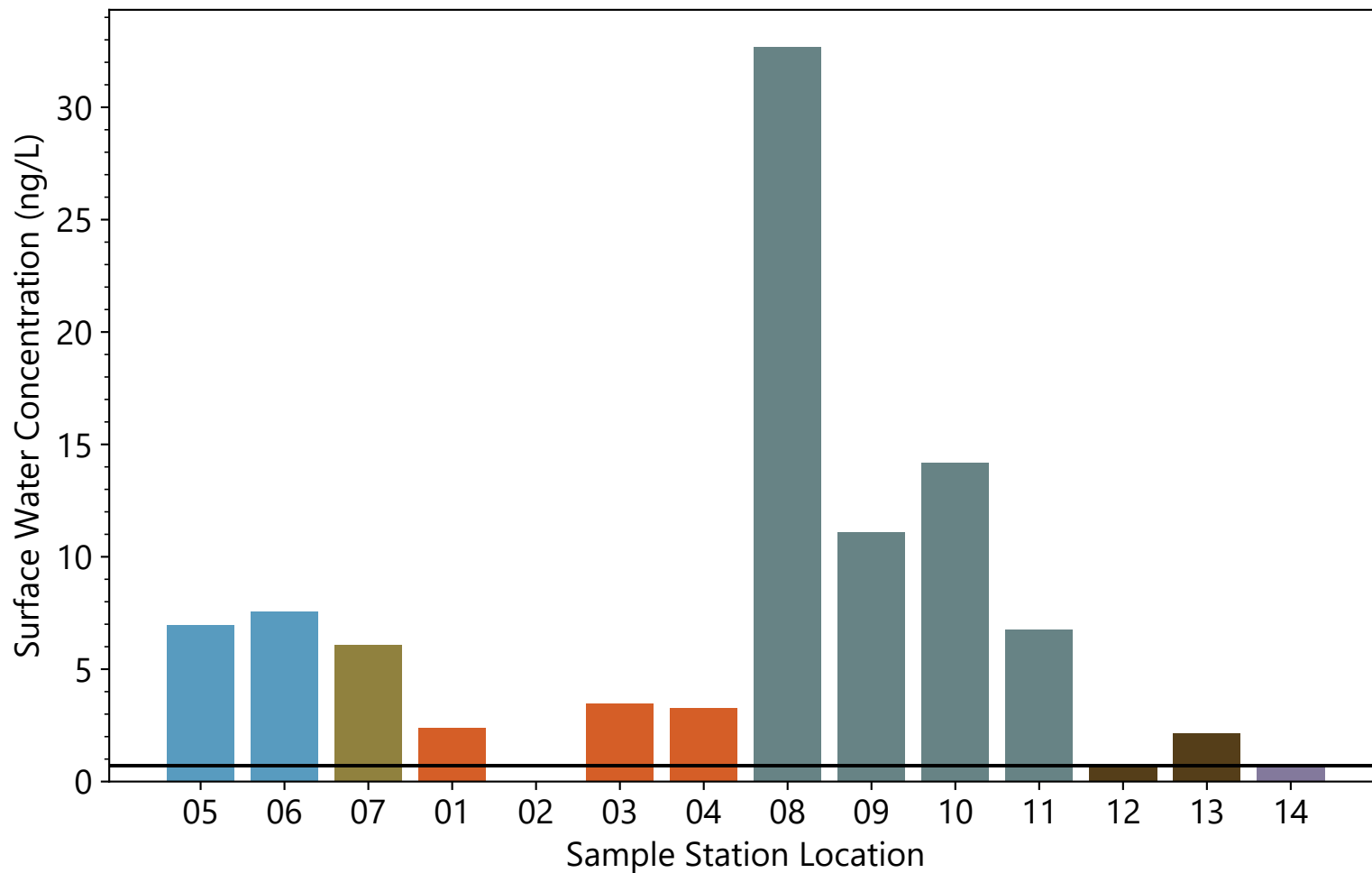




Notes:
 1. Non-detects were treated as the method detection limit and field duplicates were averaged with parent samples.
 2. Hatching represents samples that were non-detects.
 3. Horizontal line represents the average method detection limit for the analyte.
 4. Blank values were classified as not reportable after data validation.

- Menomonee River
 - South Menomonee Canal
 - Milwaukee River
- Kinnickinnic River
 - Harbor
 - Lake Michigan



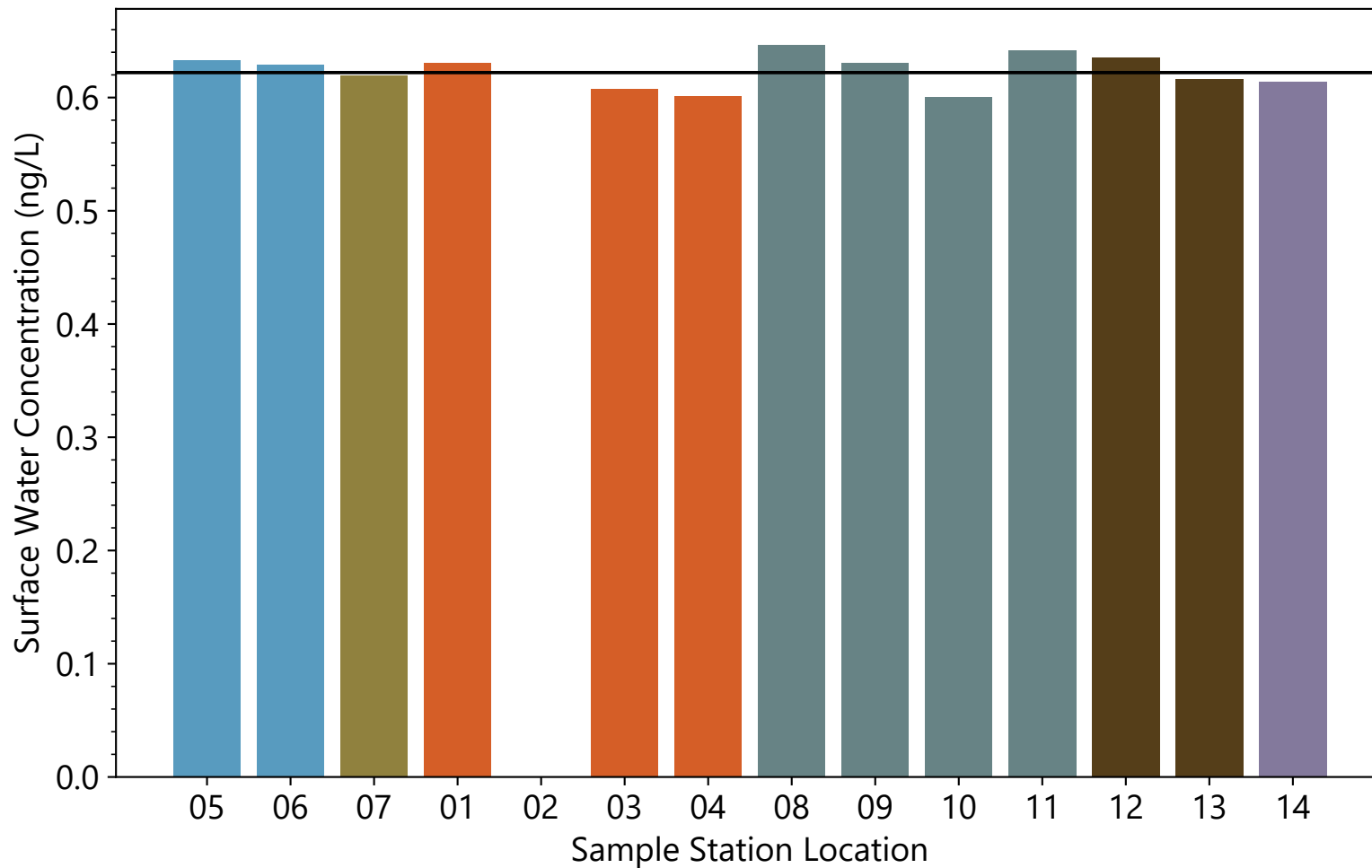


Notes:
 1. Non-detects were treated as the method detection limit and field duplicates were averaged with parent samples.
 2. Hatching represents samples that were non-detects.
 3. Horizontal line represents the average method detection limit for the analyte.
 4. Blank values were classified as not reportable after data validation.

■ Menomonee River	■ Kinnickinnic River
■ South Menomonee Canal	■ Harbor
■ Milwaukee River	■ Lake Michigan

Publish Date: 03/06/2020 11:06 AM | User: SYR-SCOL
 File Path: \\Helios\AQ\D_Drive\Projects\WL_DNR\Milwaukee_AOC\Design_Analysis\PFAS\Barplots\PFAS_barplots.py



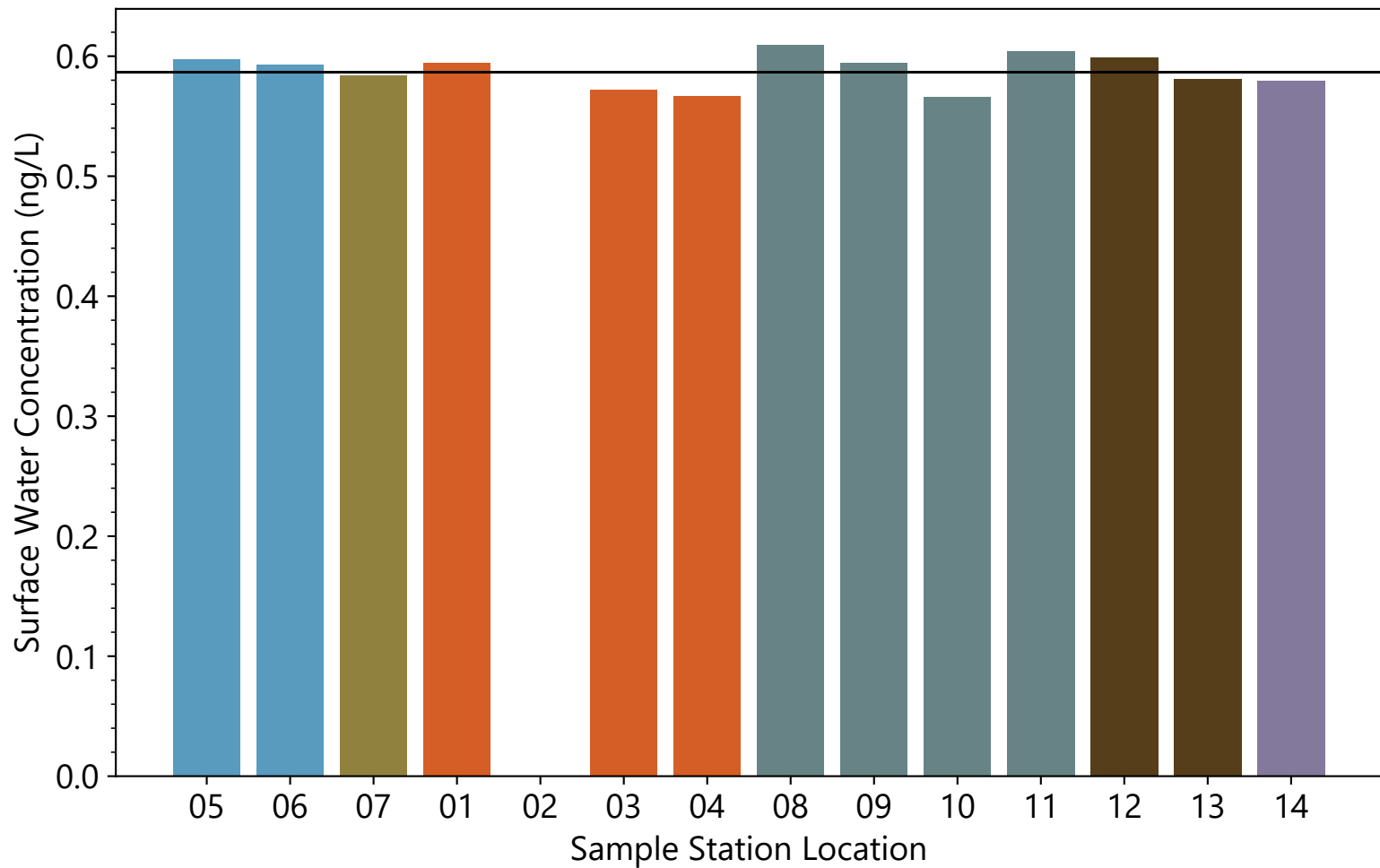


Notes:
 1. Non-detects were treated as the method detection limit and field duplicates were averaged with parent samples.
 2. Hatching represents samples that were non-detects.
 3. Horizontal line represents the average method detection limit for the analyte.
 4. Blank values were classified as not reportable after data validation.

■ Menomonee River	■ Kinnickinnic River
■ South Menomonee Canal	■ Harbor
■ Milwaukee River	■ Lake Michigan

Publish Date: 03/06/2020 11:06 AM | User: SYR-SCOL
 File Path: \\Helios\AQ\D_Drive\Projects\WL_DNR\Milwaukee_AOC\Design_Analysis\PFAS\Barplots\PFAS_barplots.py

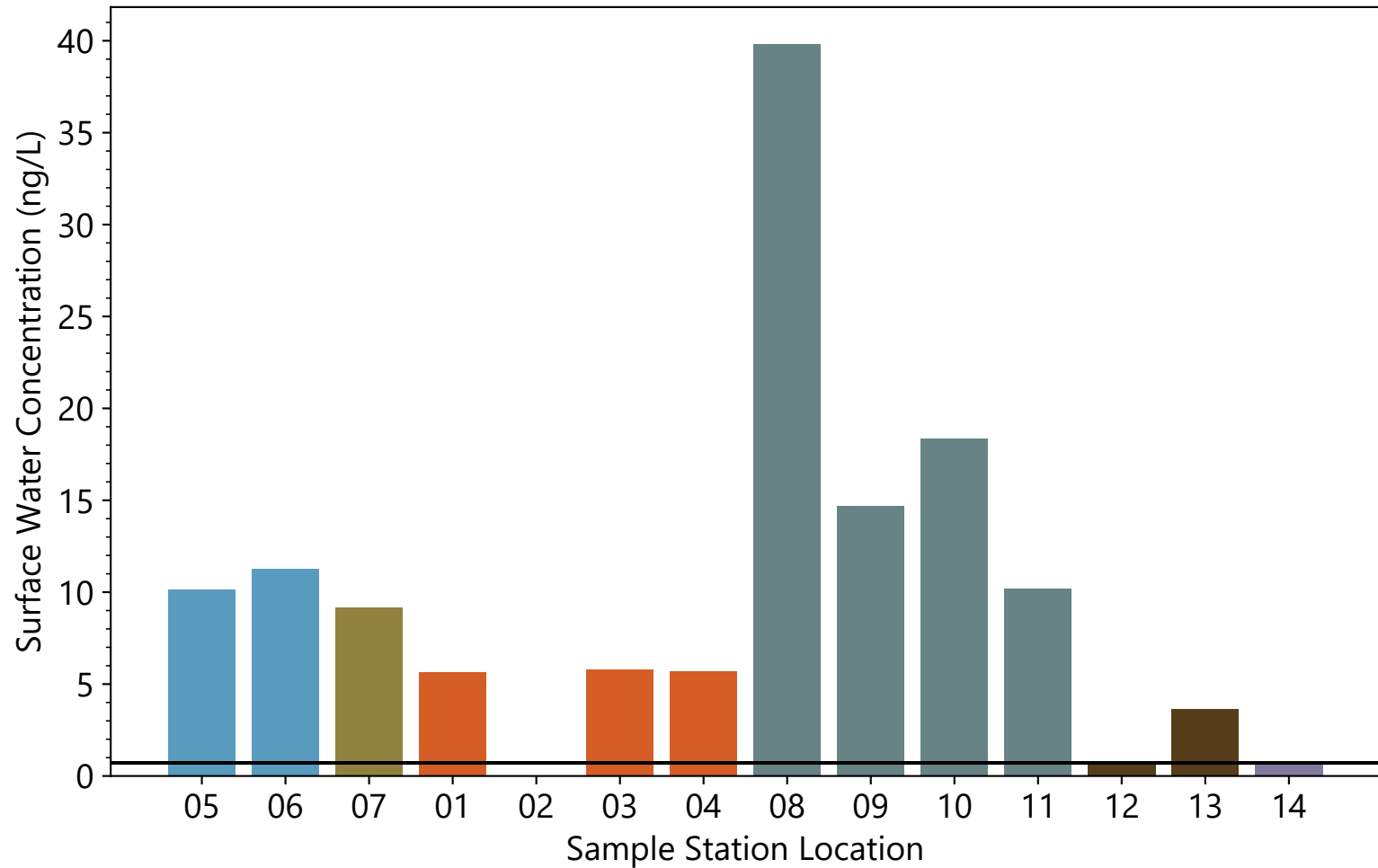




Notes:
1. Non-detects were treated as the method detection limit and field duplicates were averaged with parent samples.
2. Hatching represents samples that were non-detects.
3. Horizontal line represents the average method detection limit for the analyte.
4. Blank values were classified as not reportable after data validation.

■ Menomonee River	■ Kinnickinnic River
■ South Menomonee Canal	■ Harbor
■ Milwaukee River	■ Lake Michigan





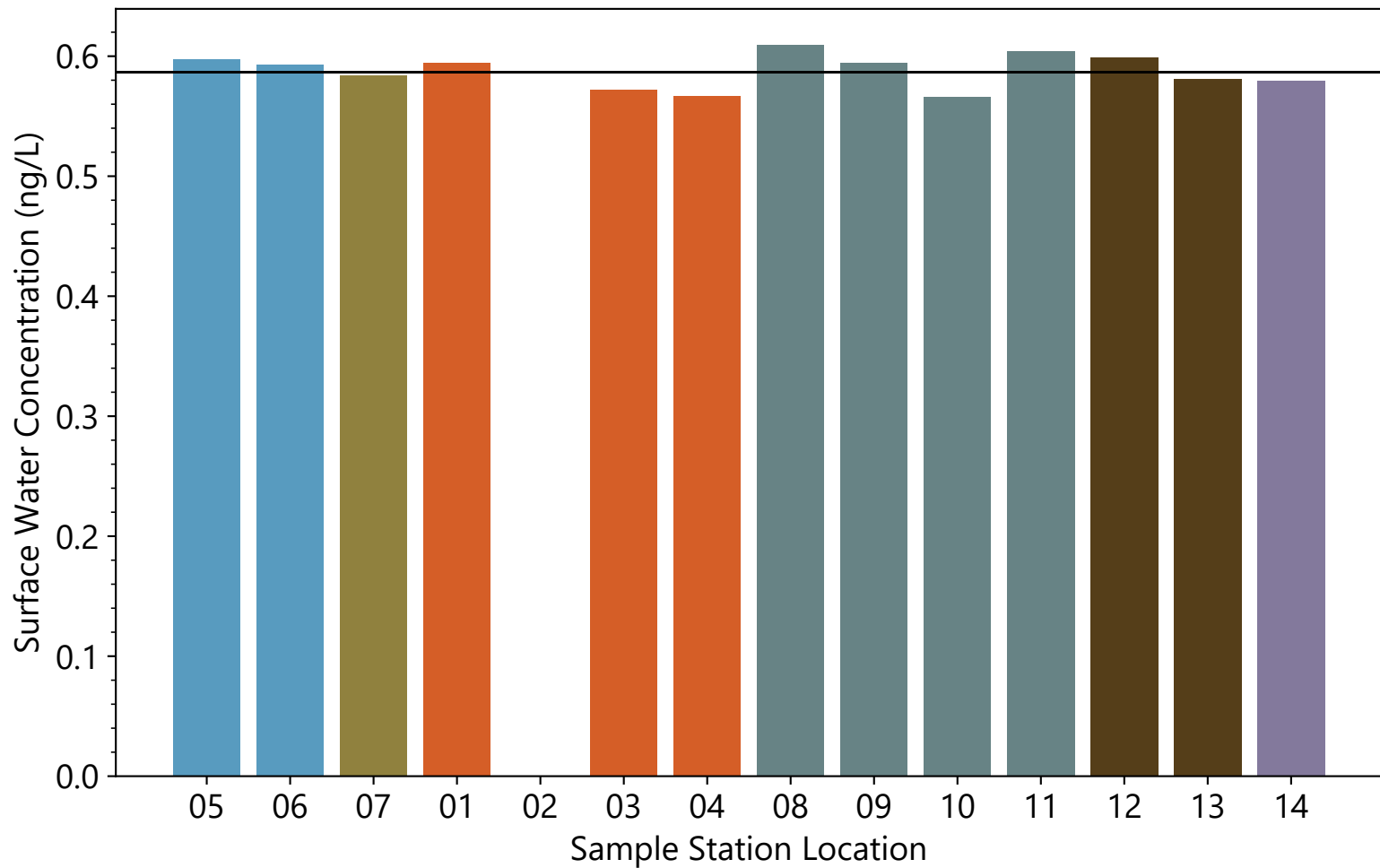
Notes:

1. If both samples were detects, their values were directly summed.
2. If both samples were non-detect, the value shown is the average method detection limit.
3. Hatching represents sample groups that were both non-detect.
4. Horizontal line represents the average method detection limit for the analytes.
5. Blank values were classified as not reportable after data validation.

- | | |
|--|---|
| ■ Menomonee River | ■ Kinnickinnic River |
| ■ South Menomonee Canal | ■ Harbor |
| ■ Milwaukee River | ■ Lake Michigan |

Publish Date: 03/06/2020 11:06 AM | User: SYR-SCOL
 File Path: \\Helios\AQ\D_Drive\Projects\WL_DNR\Milwaukee_AOC\Design_Analysis\PFAS\Barplots\PFAS_barplots.py





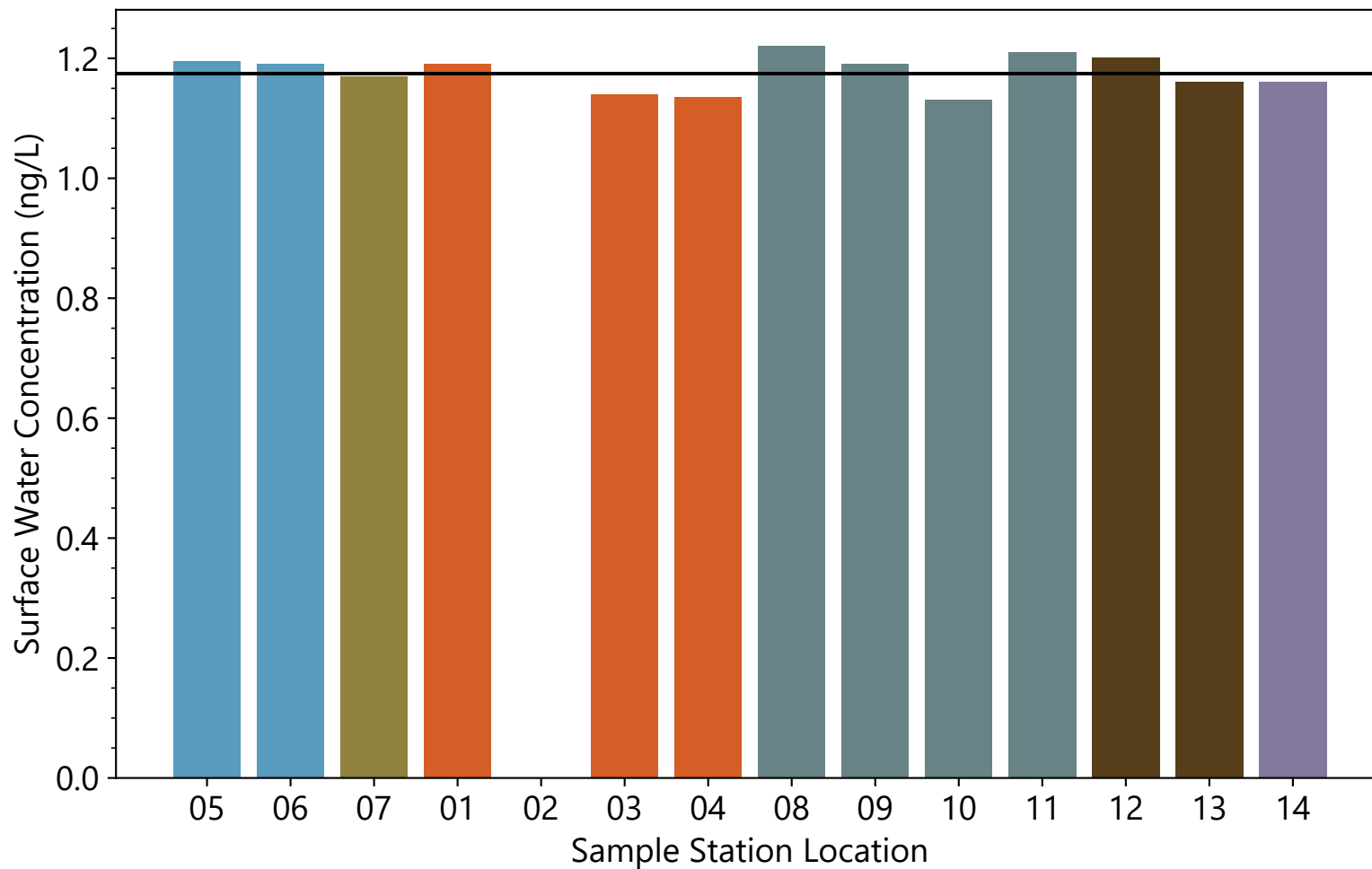
Notes:

- 1. Non-detects were treated as the method detection limit and field duplicates were averaged with parent samples.
- 2. Hatching represents samples that were non-detects.
- 3. Horizontal line represents the average method detection limit for the analyte.
- 4. Blank values were classified as not reportable after data validation.

- Menomonee River
- South Menomonee Canal
- Milwaukee River
- Kinnickinnic River
- Harbor
- Lake Michigan

Publish Date: 03/06/2020 11:06 AM | User: SYR-SCOL
File Path: \\Helios\AQ\D_Drive\Projects\WL_DNR\Milwaukee_AOC\Design_Analysis\PFAS\Barplots\PFAS_barplots.py





Notes:

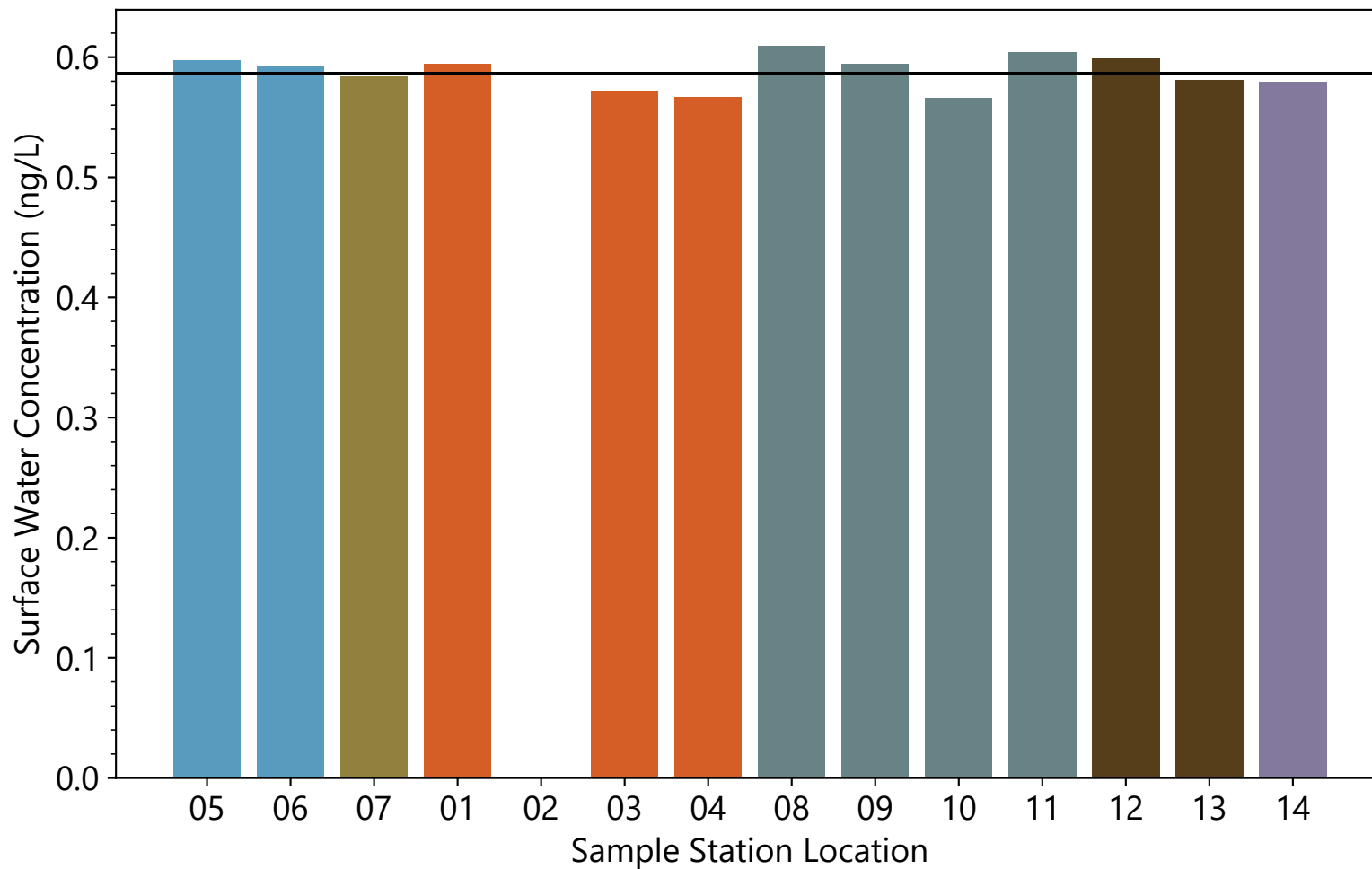
1. Non-detects were treated as the method detection limit and field duplicates were averaged with parent samples.
2. Hatching represents samples that were non-detects.
3. Horizontal line represents the average method detection limit for the analyte.
4. Blank values were classified as not reportable after data validation.

- | | |
|--|--|
| ■ Menomonee River | ■ Kinnickinnic River |
| ■ South Menomonee Canal | ■ Harbor |
| ■ Milwaukee River | ■ Lake Michigan |

Publish Date: 03/06/2020 11:06 AM | User: SYR-SCOL
 File Path: \\Helios\AQ\D_Drive\Projects\WL_DNR\Milwaukee_AOC\Design_Analysis\PFAS\Barplots\PFAS_barplots.py



N-methyl perfluoro-1-octanesulfonamide (N-MeFOSA) Concentrations for MKE AOC



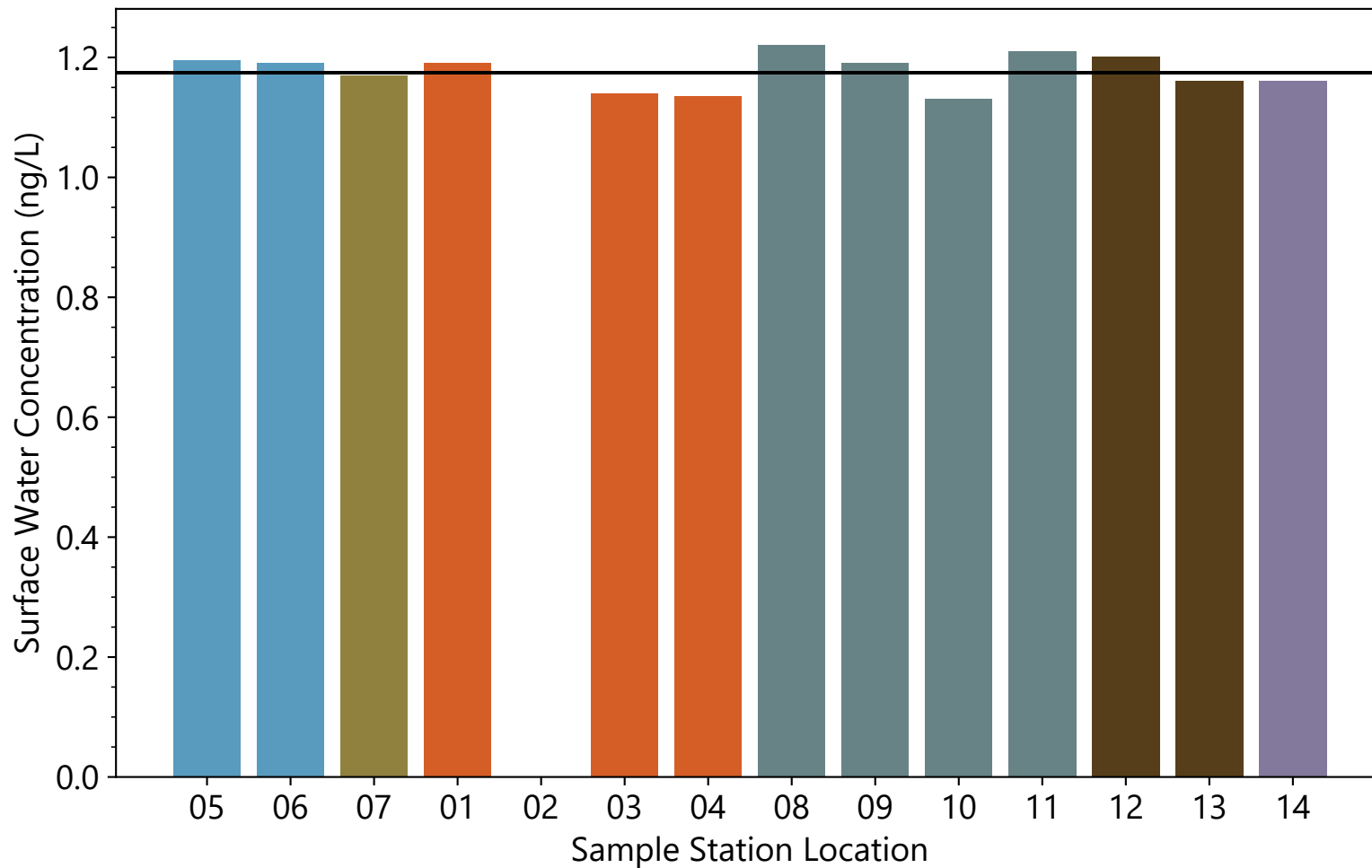
Notes:

1. Non-detects were treated as the method detection limit and field duplicates were averaged with parent samples.
2. Hatching represents samples that were non-detects.
3. Horizontal line represents the average method detection limit for the analyte.
4. Blank values were classified as not reportable after data validation.

- | | |
|--|--|
| ■ Menomonee River | ■ Kinnickinnic River |
| ■ South Menomonee Canal | ■ Harbor |
| ■ Milwaukee River | ■ Lake Michigan |

Publish Date: 03/06/2020 11:07 AM | User: SYR-SCOL
 File Path: \\Helios\AQ\D_Drive\Projects\WL_DNR\Milwaukee_AOC\Design_Analysis\PFAS\Barplots\PFAS_barplots.py





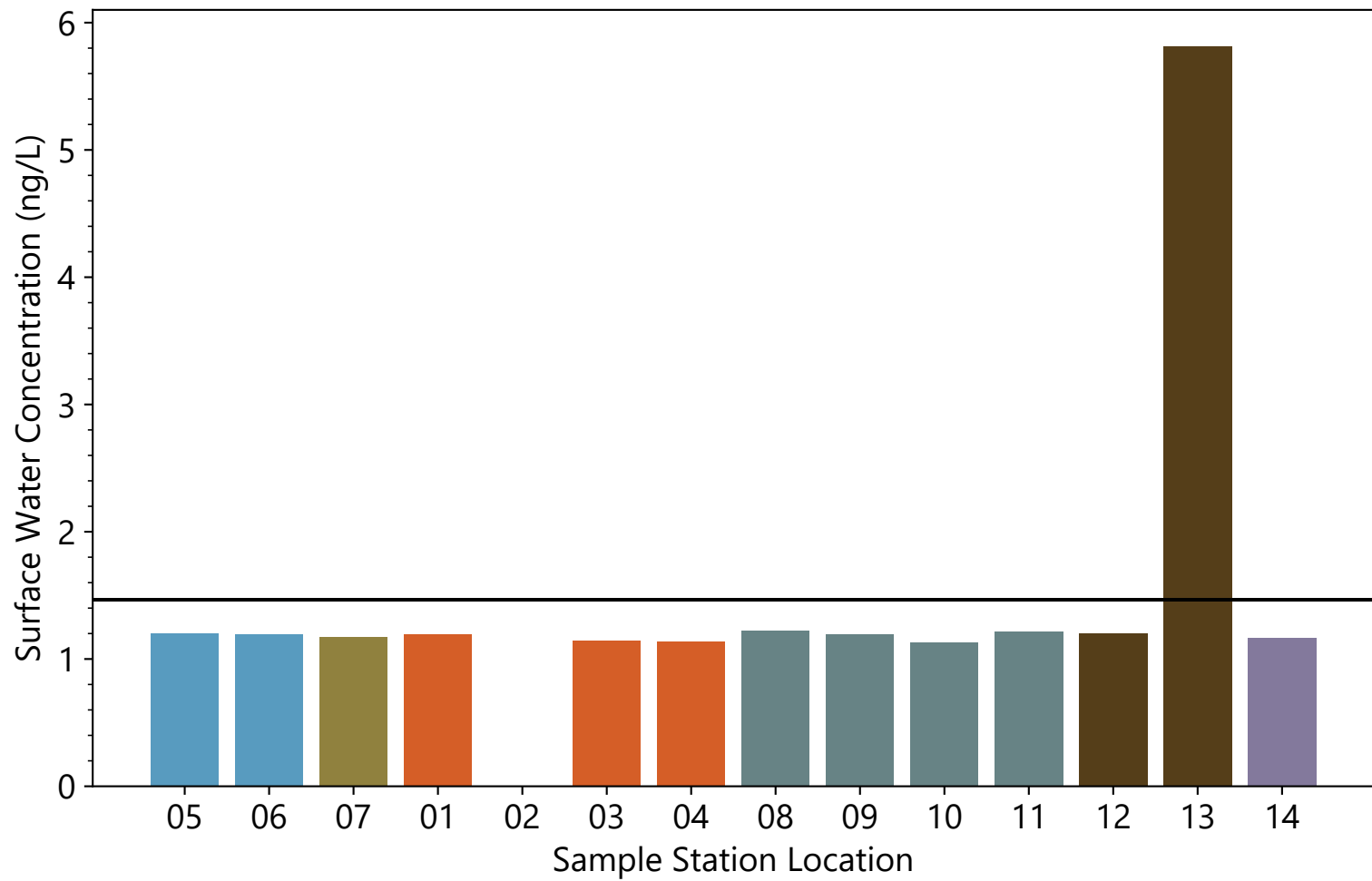
Notes:
 1. Non-detects were treated as the method detection limit and field duplicates were averaged with parent samples.
 2. Hatching represents samples that were non-detects.
 3. Horizontal line represents the average method detection limit for the analyte.
 4. Blank values were classified as not reportable after data validation.

■ Menomonee River	■ Kinnickinnic River
■ South Menomonee Canal	■ Harbor
■ Milwaukee River	■ Lake Michigan

Publish Date: 03/06/2020 11:07 AM | User: SYR-SCOL
 File Path: \\Helios\AQ\D_Drive\Projects\WL_DNR\Milwaukee_AOC\Design_Analysis\PFAS\Barplots\PFAS_barplots.py



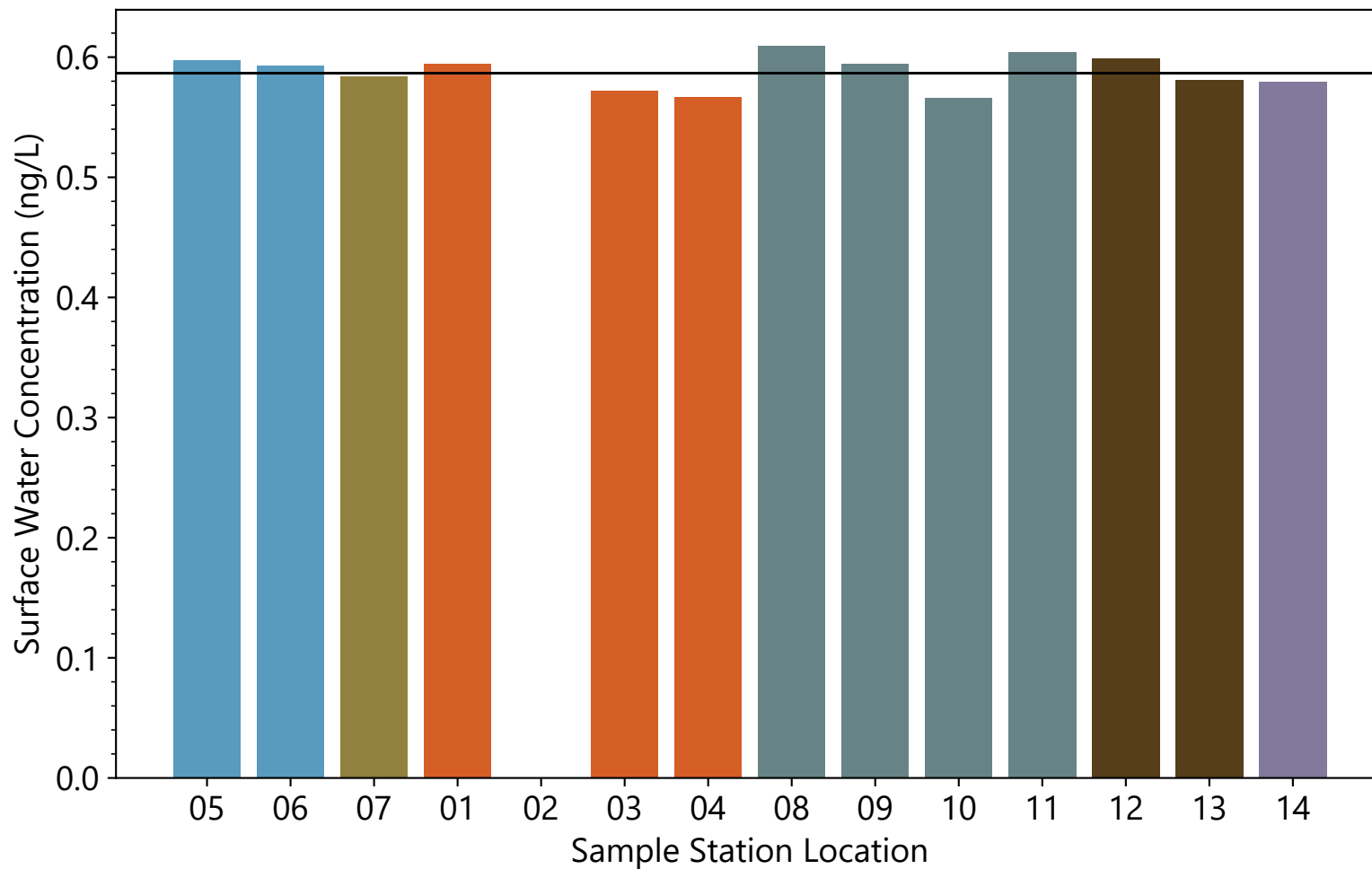
N-methyl perfluorooctanesulfonamidoacetic acid (N-MeFOSAA) Concentrations for MKE AOC



Notes:
 1. Non-detects were treated as the method detection limit and field duplicates were averaged with parent samples.
 2. Hatching represents samples that were non-detects.
 3. Horizontal line represents the average method detection limit for the analyte.
 4. Blank values were classified as not reportable after data validation.

■ Menomonee River	■ Kinnickinnic River
■ South Menomonee Canal	■ Harbor
■ Milwaukee River	■ Lake Michigan





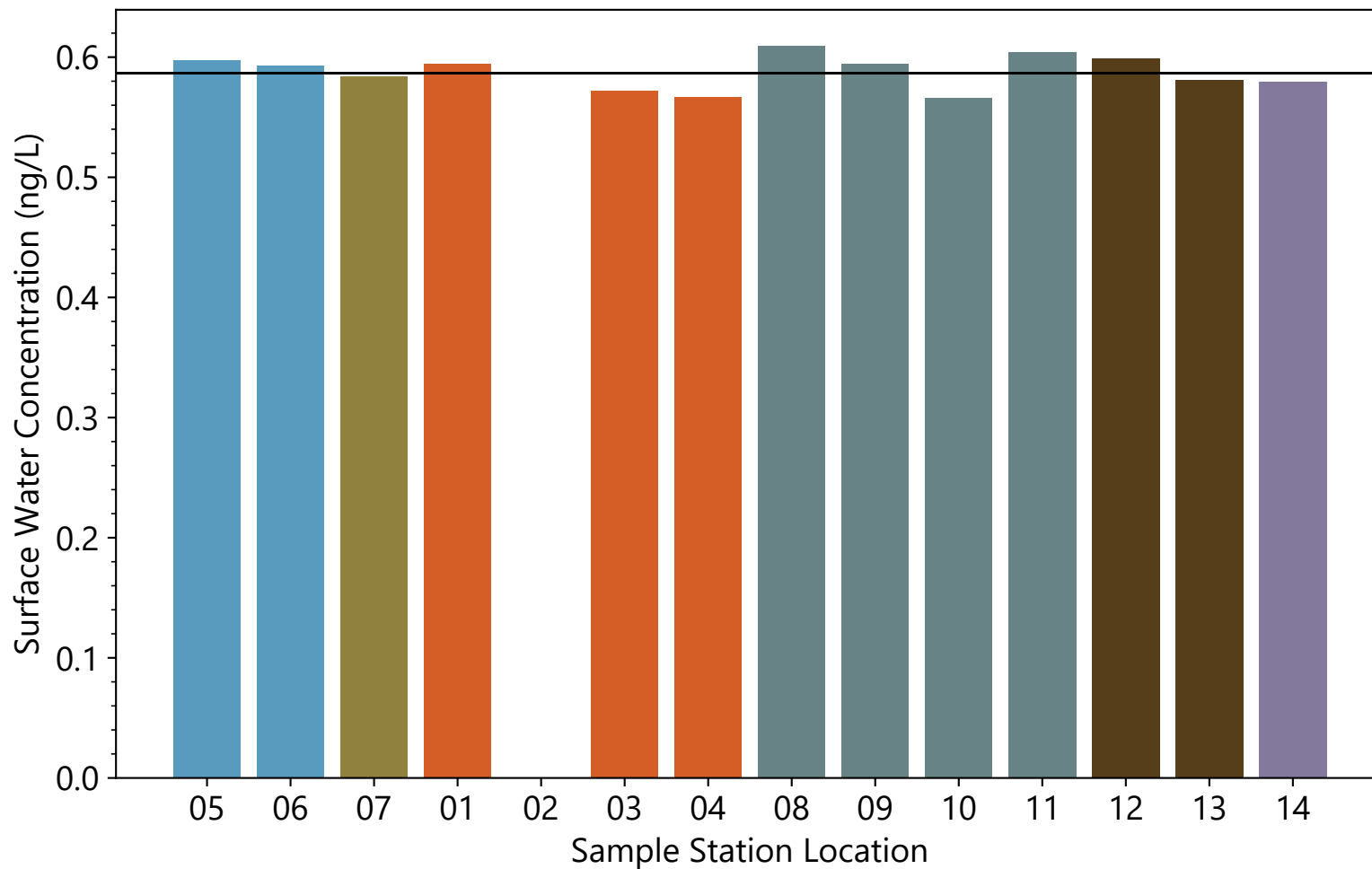
Notes:
 1. Non-detects were treated as the method detection limit and field duplicates were averaged with parent samples.
 2. Hatching represents samples that were non-detects.
 3. Horizontal line represents the average method detection limit for the analyte.
 4. Blank values were classified as not reportable after data validation.

■ Menomonee River	■ Kinnickinnic River
■ South Menomonee Canal	■ Harbor
■ Milwaukee River	■ Lake Michigan

Publish Date: 03/06/2020 11:07 AM | User: SYR-SCOL
 File Path: \\Helios\AQ\D_Drive\Projects\WL_DNR\Milwaukee_AOC\Design_Analysis\PFAS\Barplots\PFAS_barplots.py



2-(N-methyl perfluoro-1-octanesulfonamido)-ethanol (N-MeFOSE) Concentrations for MKE AOC



Notes:

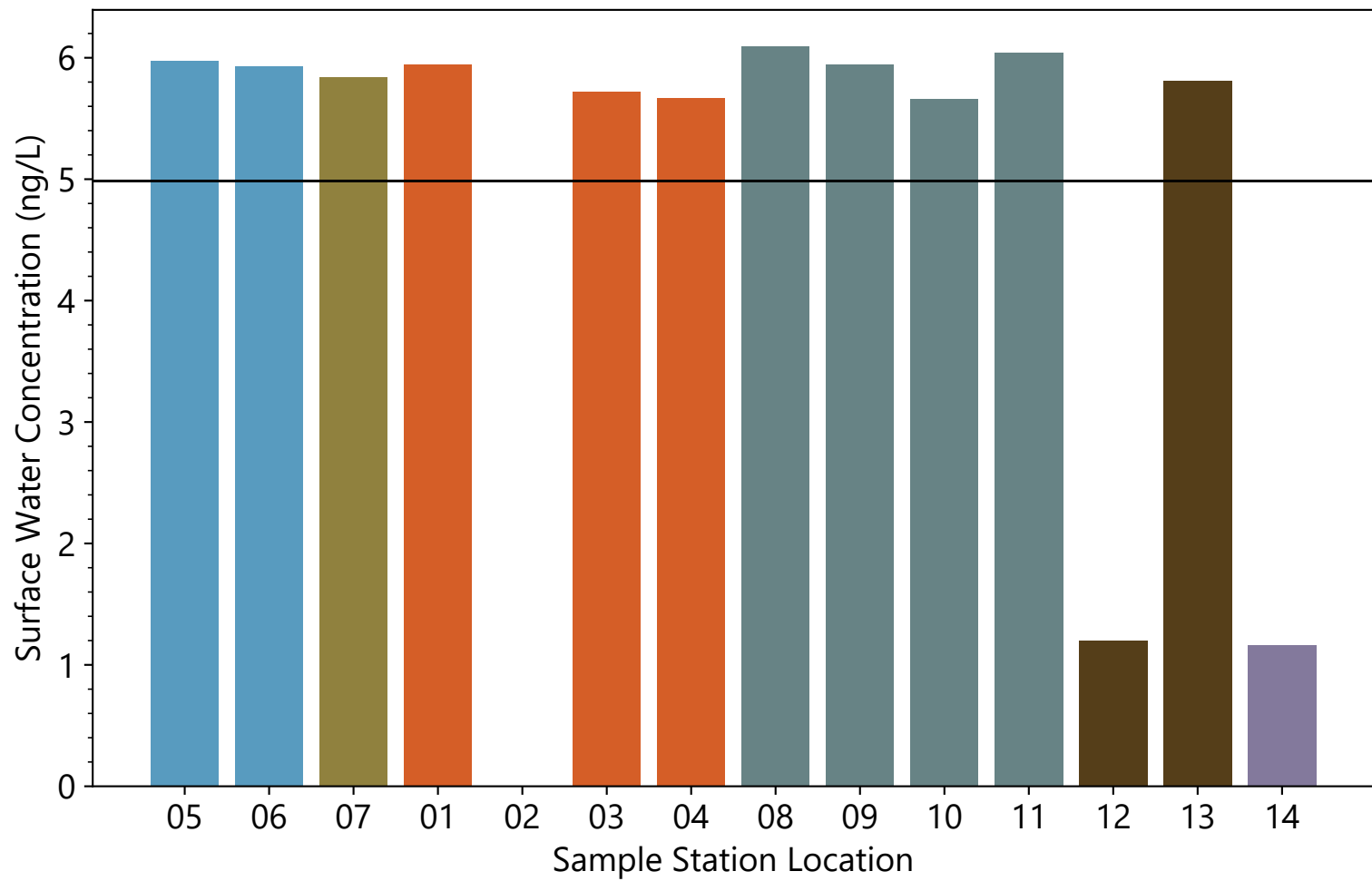
1. Non-detects were treated as the method detection limit and field duplicates were averaged with parent samples.
2. Hatching represents samples that were non-detects.
3. Horizontal line represents the average method detection limit for the analyte.
4. Blank values were classified as not reportable after data validation.

- | | |
|--|--|
| ■ Menomonee River | ■ Kinnickinnic River |
| ■ South Menomonee Canal | ■ Harbor |
| ■ Milwaukee River | ■ Lake Michigan |

Publish Date: 03/06/2020 11:07 AM | User: SYR-SCOL
 File Path: \\Helios\AQ\D_Drive\Projects\WL_DNR\Milwaukee_AOC\Design_Analysis\PFAS\Barplots\PFAS_barplots.py



2-(N-ethyl perfluoro-1-octanesulfonamido)-ethanol (N-EtFOSE) Concentrations for MKE AOC

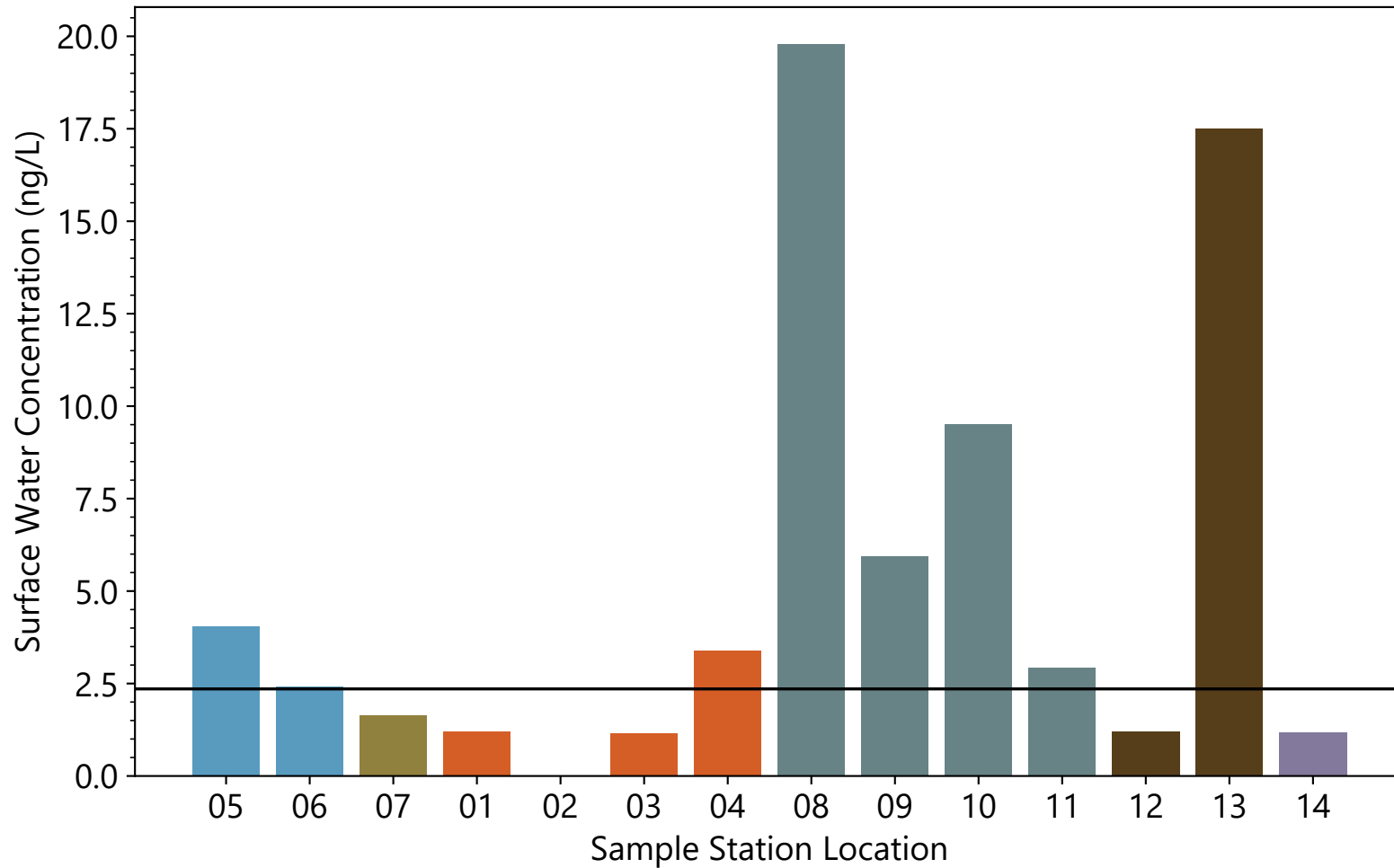


Notes:
 1. Non-detects were treated as the method detection limit and field duplicates were averaged with parent samples.
 2. Hatching represents samples that were non-detects.
 3. Horizontal line represents the average method detection limit for the analyte.
 4. Blank values were classified as not reportable after data validation.

■ Menomonee River	■ Kinnickinnic River
■ South Menomonee Canal	■ Harbor
■ Milwaukee River	■ Lake Michigan

Publish Date: 03/06/2020 11:07 AM | User: SYR-SCOL
 File Path: \\Helios\AQ\D_Drive\Projects\WL_DNR\Milwaukee_AOC\Design_Analysis\PFAS\Barplots\PFAS_barplots.py





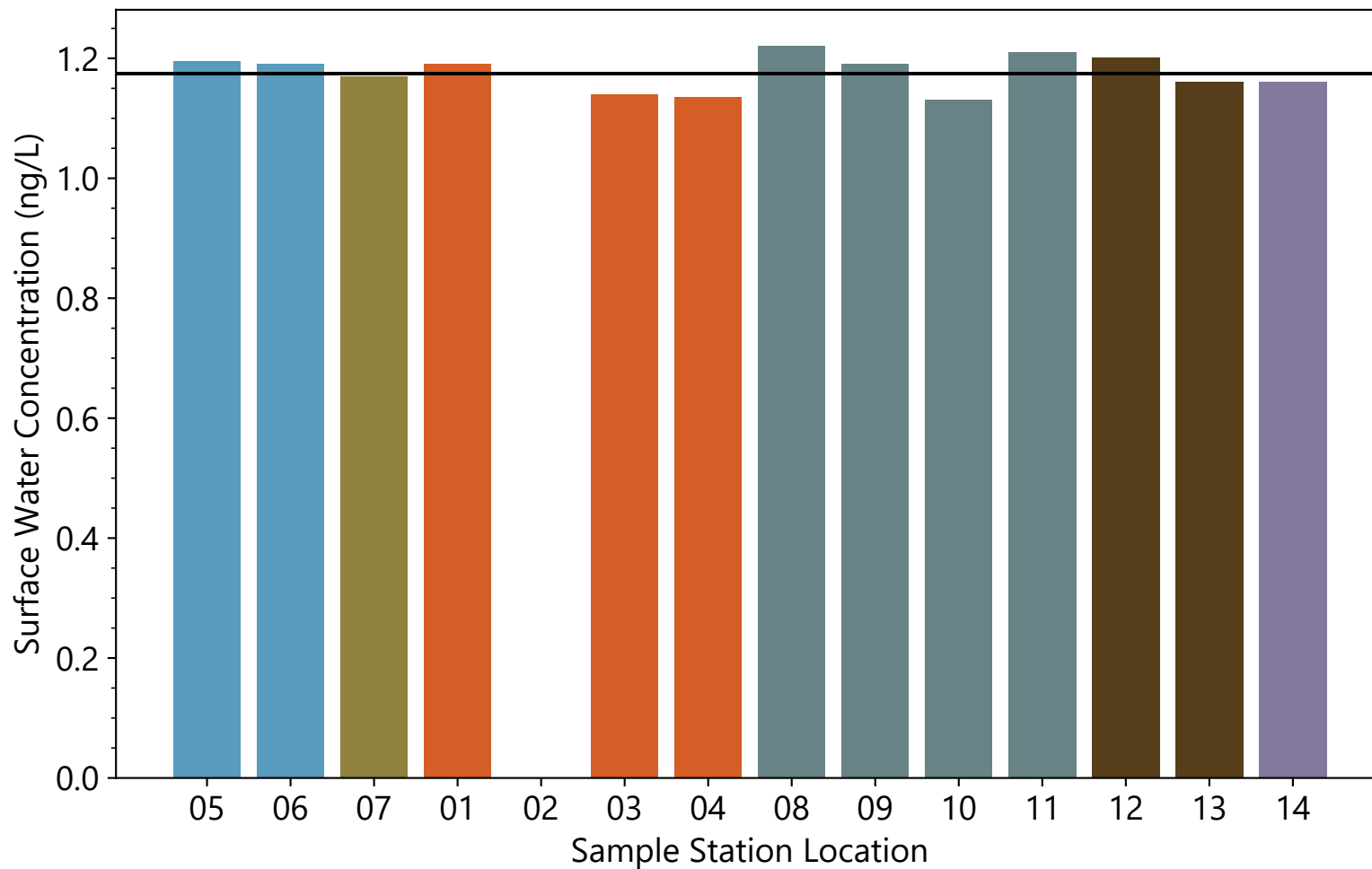
Notes:

1. Non-detects were treated as the method detection limit and field duplicates were averaged with parent samples.
2. Hatching represents samples that were non-detects.
3. Horizontal line represents the average method detection limit for the analyte.
4. Blank values were classified as not reportable after data validation.

- | | |
|--|---|
| ■ Menomonee River | ■ Kinnickinnic River |
| ■ South Menomonee Canal | ■ Harbor |
| ■ Milwaukee River | ■ Lake Michigan |

Publish Date: 03/06/2020 11:07 AM | User: SYR-SCOL
 File Path: \\Helios\AQ\D_Drive\Projects\WL_DNR\Milwaukee_AOC\Design_Analysis\PFAS\Barplots\PFAS_barplots.py





Notes:

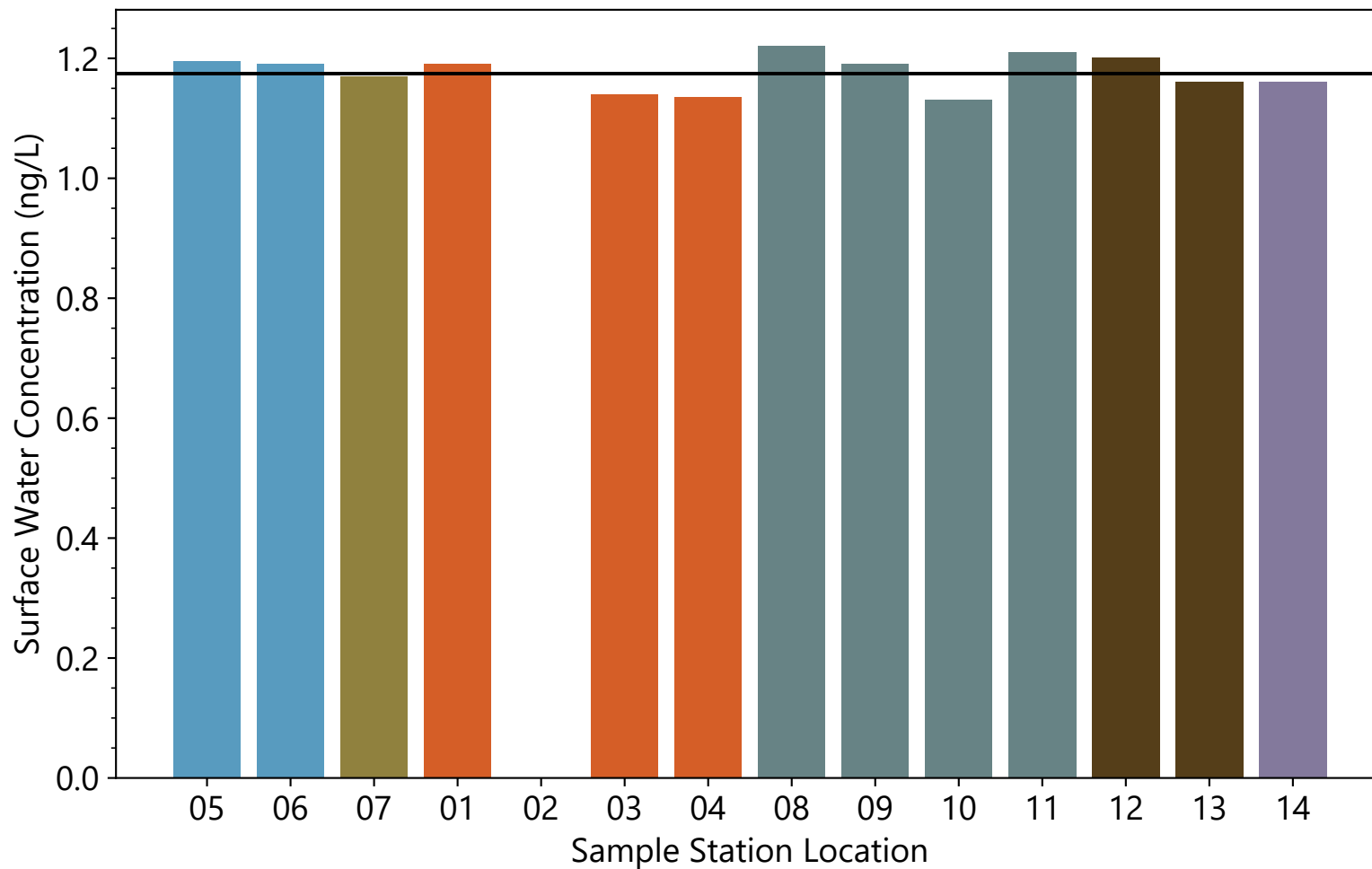
1. Non-detects were treated as the method detection limit and field duplicates were averaged with parent samples.
2. Hatching represents samples that were non-detects.
3. Horizontal line represents the average method detection limit for the analyte.
4. Blank values were classified as not reportable after data validation.

- | | |
|--|---|
| ■ Menomonee River | ■ Kinnickinnic River |
| ■ South Menomonee Canal | ■ Harbor |
| ■ Milwaukee River | ■ Lake Michigan |

Publish Date: 03/06/2020 11:07 AM | User: SYR-SCOL
 File Path: \\Helios\AQ\D_Drive\Projects\WL_DNR\Milwaukee_AOC\Design_Analysis\PFAS\Barplots\PFAS_barplots.py



1H,1H,2H,2H-perfluorodecanesulphonic acid (8:2 FTS) Concentrations for MKE AOC



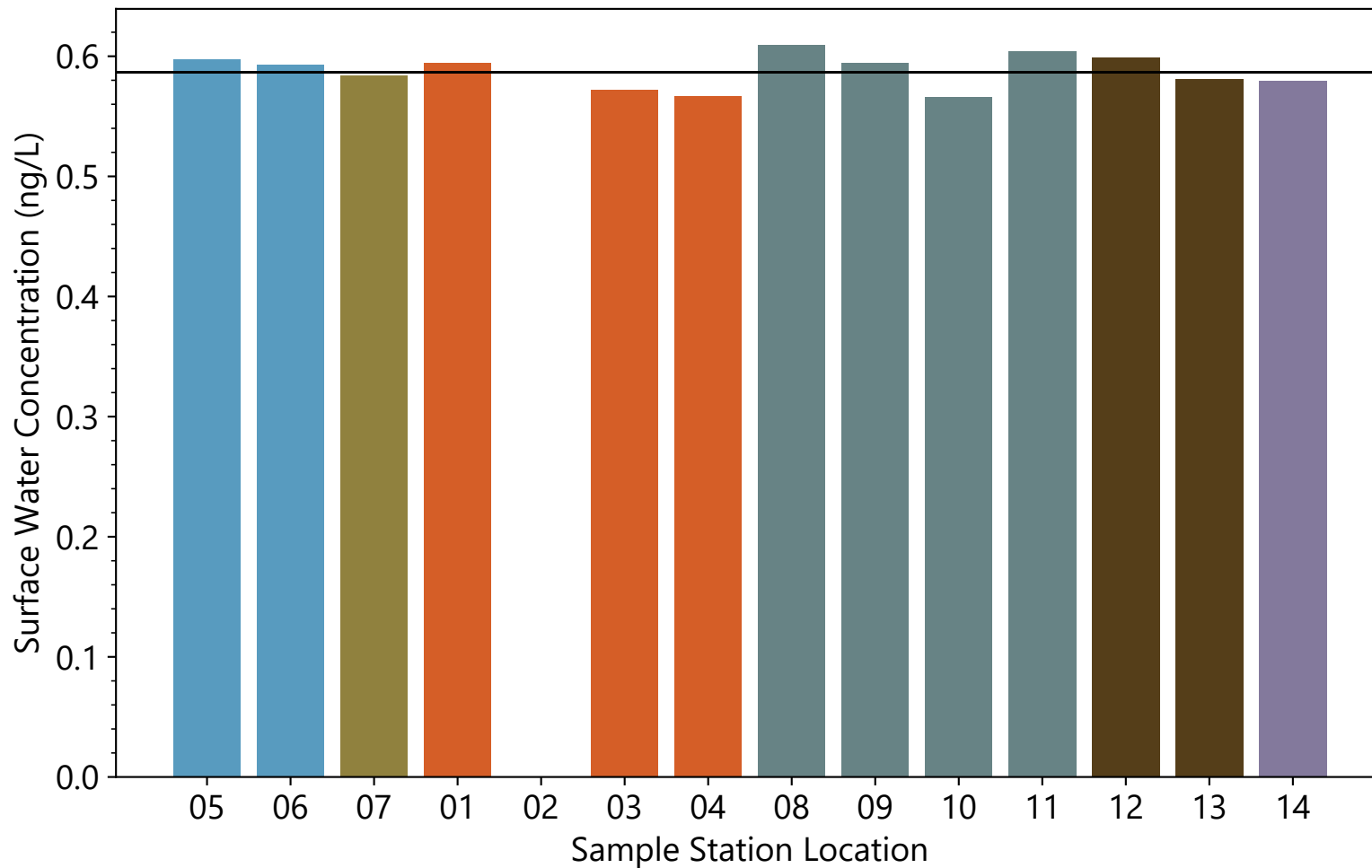
Notes:

1. Non-detects were treated as the method detection limit and field duplicates were averaged with parent samples.
2. Hatching represents samples that were non-detects.
3. Horizontal line represents the average method detection limit for the analyte.
4. Blank values were classified as not reportable after data validation.

- | | |
|--|--|
| ■ Menomonee River | ■ Kinnickinnic River |
| ■ South Menomonee Canal | ■ Harbor |
| ■ Milwaukee River | ■ Lake Michigan |

Publish Date: 03/06/2020 11:07 AM | User: SYR-SCOL
 File Path: \\Helios\AQ\D_Drive\Projects\WL_DNR\Milwaukee_AOC\Design_Analysis\PFAS\Barplots\PFAS_barplots.py





Notes:

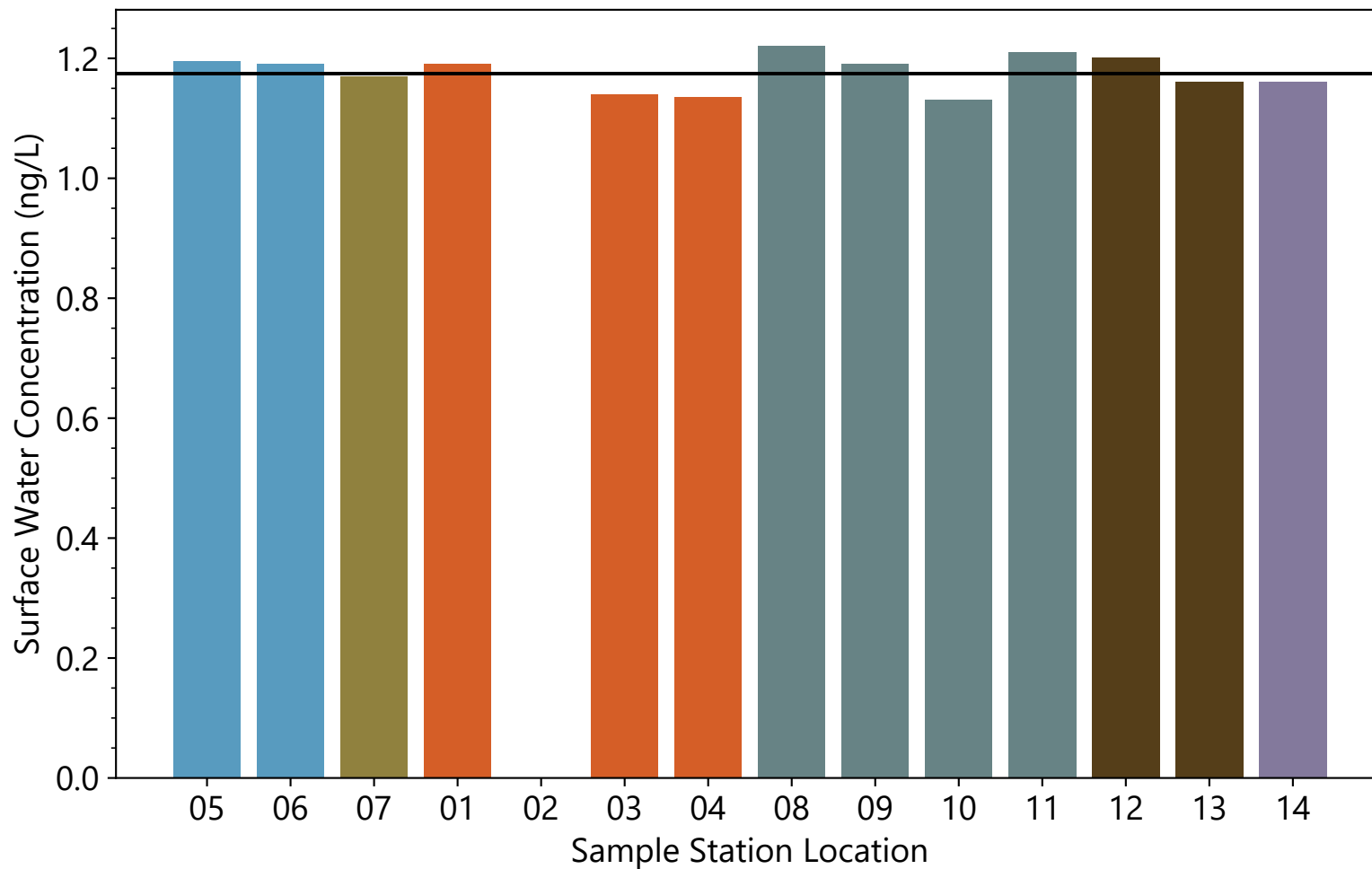
1. Non-detects were treated as the method detection limit and field duplicates were averaged with parent samples.
2. Hatching represents samples that were non-detects.
3. Horizontal line represents the average method detection limit for the analyte.
4. Blank values were classified as not reportable after data validation.

- | | |
|--|--|
| ■ Menomonee River | ■ Kinnickinnic River |
| ■ South Menomonee Canal | ■ Harbor |
| ■ Milwaukee River | ■ Lake Michigan |

Publish Date: 03/06/2020 11:07 AM | User: SYR-SCOL
 File Path: \\Helios\AQ\D_Drive\Projects\WL_DNR\Milwaukee_AOC\Design_Analysis\PFAS\Barplots\PFAS_barplots.py



2,3,3,3-tetrafluoro-2-(1,1,2,2,3,3,3-heptafluoropropoxy)-propanoic acid (GenX) Concentrations for MKE AOC



Notes:

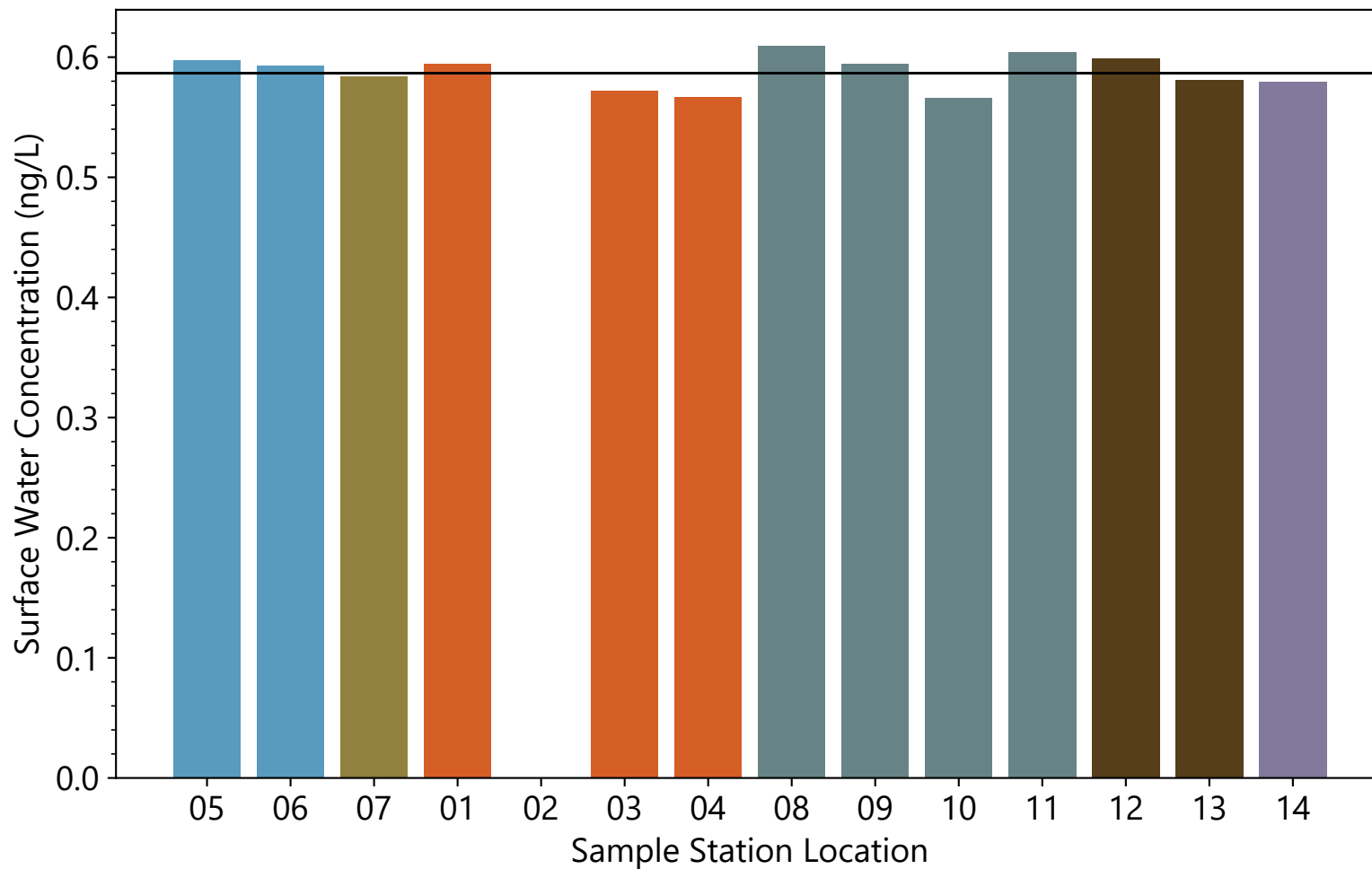
1. Non-detects were treated as the method detection limit and field duplicates were averaged with parent samples.
2. Hatching represents samples that were non-detects.
3. Horizontal line represents the average method detection limit for the analyte.
4. Blank values were classified as not reportable after data validation.

- | | |
|--|--|
| ■ Menomonee River | ■ Kinnickinnic River |
| ■ South Menomonee Canal | ■ Harbor |
| ■ Milwaukee River | ■ Lake Michigan |

Publish Date: 03/06/2020 11:07 AM | User: SYR-SCOL
 File Path: \\Helios\AQ\D_Drive\Projects\WL_DNR\Milwaukee_AOC\Design_Analysis\PFAS\Barplots\PFAS_barplots.py



11-chloroeicosafuoro-3-oxaundecane-1-sulfonate (PF3OUdS) (F53B minor) Concentrations for MKE AOC



Notes:

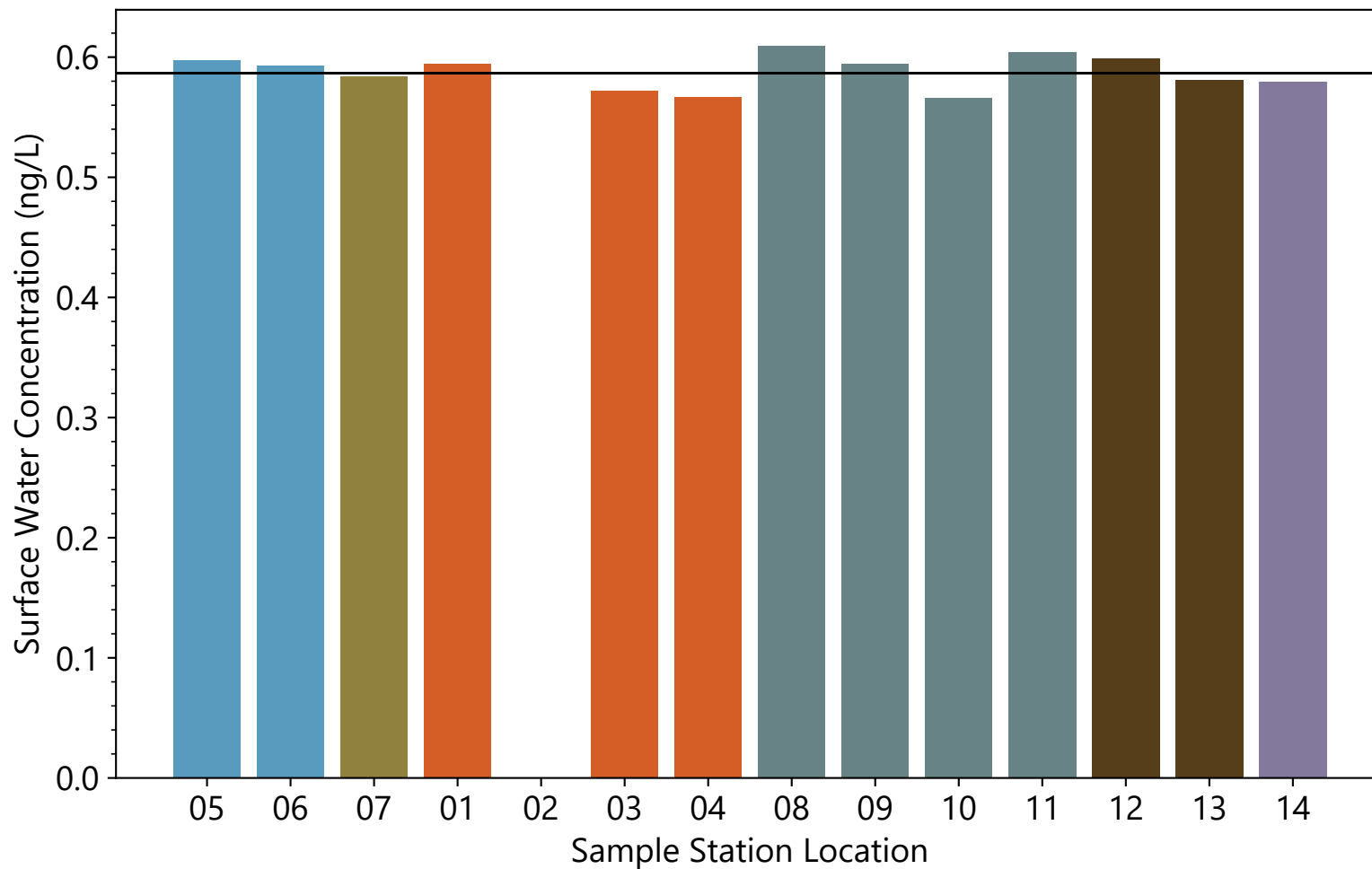
1. Non-detects were treated as the method detection limit and field duplicates were averaged with parent samples.
2. Hatching represents samples that were non-detects.
3. Horizontal line represents the average method detection limit for the analyte.
4. Blank values were classified as not reportable after data validation.

- | | |
|--|---|
| ■ Menomonee River | ■ Kinnickinnic River |
| ■ South Menomonee Canal | ■ Harbor |
| ■ Milwaukee River | ■ Lake Michigan |

Publish Date: 03/06/2020 11:07 AM | User: SYR-SCOL
 File Path: \\Helios\AQ\D_Drive\Projects\WL_DNR\Milwaukee_AOC\Design_Analysis\PFAS\Barplots\PFAS_barplots.py



9-chlorohexadecafluoro-3-oxanonnane-1-sulfonate (PF3ONS) (F53B major) Concentrations for MKE AOC



Notes:
 1. Non-detects were treated as the method detection limit and field duplicates were averaged with parent samples.
 2. Hatching represents samples that were non-detects.
 3. Horizontal line represents the average method detection limit for the analyte.
 4. Blank values were classified as not reportable after data validation.

■ Menomonee River	■ Kinnickinnic River
■ South Menomonee Canal	■ Harbor
■ Milwaukee River	■ Lake Michigan

Publish Date: 03/06/2020 11:07 AM | User: SYR-SCOL
 File Path: \\Helios\AQ\D_Drive\Projects\WL_DNR\Milwaukee_AOC\Design_Analysis\PFAS\Barplots\PFAS_barplots.py



Sodium dodecafluoro-3H-4,8-dioxanonoate (ADONA) Concentrations for MKE AOC