

Beggs, Tauren R - DNR

From: Beggs, Tauren R - DNR
Sent: Wednesday, August 10, 2022 3:13 PM
To: Cull, Whitney
Cc: Byers, Harris
Subject: RE: Stantec River Point Phase I Construction Area Materials Management Plan Addendum - Clarification of Riverfront Material Placement

Hi Whitney,

Great, thank you for the quick response back on those clarifications.

Regards,

We are committed to service excellence.

Visit our survey at <http://dnr.wi.gov/customersurvey> to evaluate how I did.

Tauren R. Beggs

Phone: (920) 510-3472

Tauren.Beggs@wisconsin.gov (preferred contact method during work at home)

From: Cull, Whitney <Whitney.Cull@stantec.com>
Sent: Wednesday, August 10, 2022 3:10 PM
To: Beggs, Tauren R - DNR <Tauren.Beggs@wisconsin.gov>
Cc: Byers, Harris <Harris.Byers@stantec.com>
Subject: Stantec River Point Phase I Construction Area Materials Management Plan Addendum - Clarification of Riverfront Material Placement

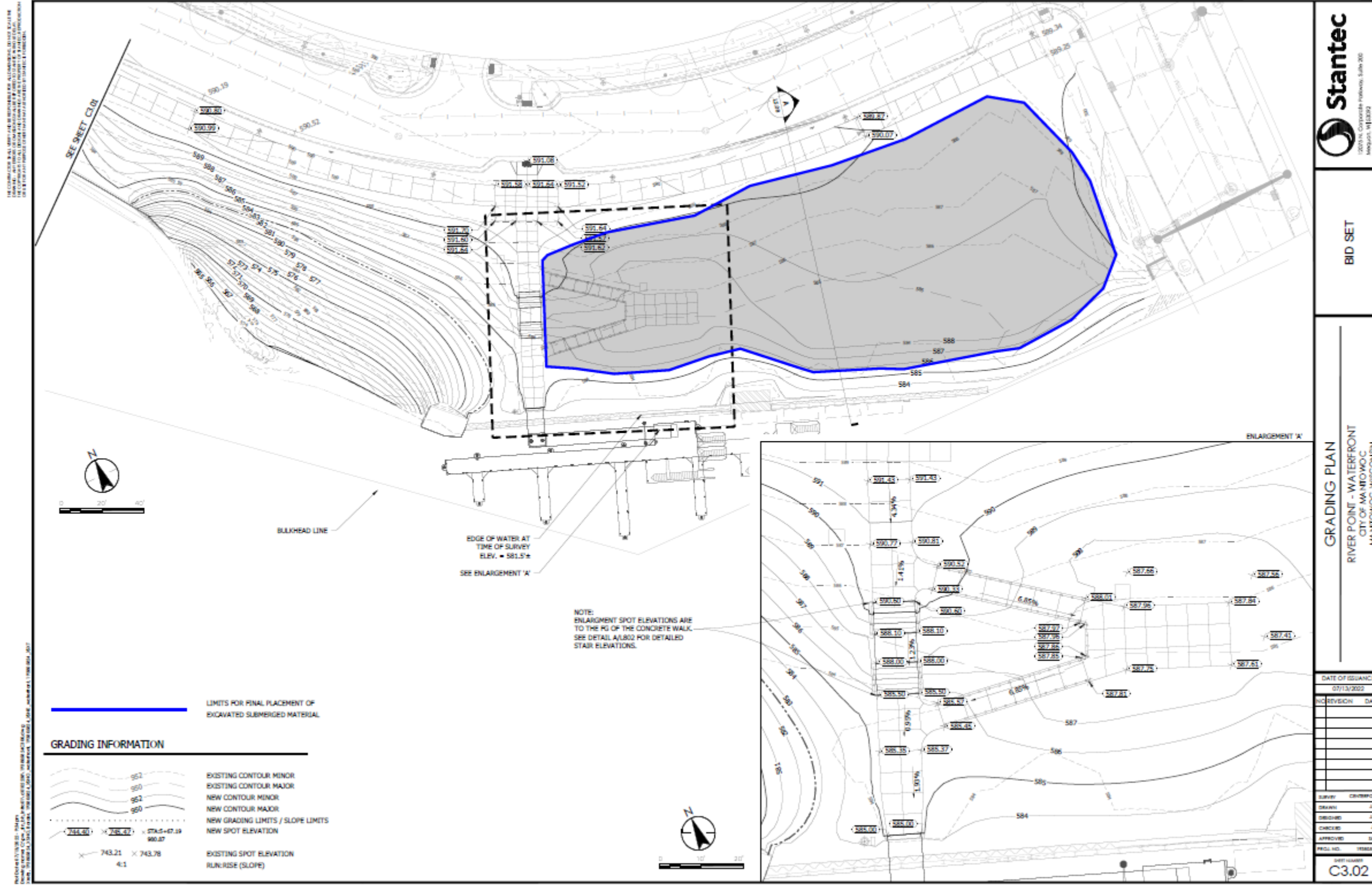
Good afternoon Tauren,

Thank you for reaching out earlier today regarding our Materials Management Plan Addendum (MMP Addendum) for the Phase I Construction Area for the River Point District in, Manitowoc, Wisconsin. The focus of the call was to clarify the contents/volumes of the area outlined in blue on Sheet C3.02 of the *River Point Waterfront Bid Set* (see below), along with the intended placement of upland (non-submerged) material being excavated 12 inches below grade along the riverfront.

I have confirmed with our engineer that the blue outline below represents the final placement of **both** of the following:

- The volume of submerged material being excavated as part of revetment in the area of the failed dock wall, **and**
- The upper 12 inches of upland (non-submerged) material being excavated along the river's edge.

There is no change in total volume for this material (the 4,000 cubic yards currently stated in the MMP Addendum is inclusive of both sources).



Let us know if you have any additional questions. Thank you!

Whitney Cull
 Geological Engineer in Training
 Mobile: (262) 219 - 4740

Stantec
 We've moved, but just across the street! Please note our new address, effective 5/23/2022: