



ENVIRONMENTAL CONSULTATION & REMEDIATION

KPRG and Associates, Inc.

INJECTION SUMMARY REPORT

September 30, 2022

Mr. Mark Drews, P.G.
Wisconsin Department of Natural Resources
141 NW Barstow Street, Room 180
Waukesha, WI 53188

VIA E-MAIL/DNR PORTAL

KPRG Project No. 11717

Re: Former Navistar/RMG Foundry
1401 Perkins Ave., Waukesha, WI 53186
FID# 268005430, BRRTS# 02-68-098404

Dear Mr. Drews:

On behalf of the Navistar, Inc. (Navistar), KPRG and Associates, Inc. (KPRG) is submitting this summary of the groundwater injection at the former RMG foundry. This injection occurred in the source area onsite at the injection points shown on Figure 1. The injection work was performed by ORIN Technologies, LLC starting on June 27 and completed on June 30. The work was performed in accordance with the previously approved work plan and is summarized below.

Approximately 900 gallons of an 18% catalyzed sodium persulfate treatment chemistry were allocated for the six (6) sixty-foot deep injection points, and 450 gallons of the same treatment were allocated for the twenty-nine (29) forty-foot deep injection points. The injection interval for the six (6) sixty-foot deep injection points occurred from 20 feet to 60 feet below ground surface (bgs). The injection interval for the forty-foot deep injection points was from 20 ft to 40 ft below ground surface (bgs). The injection points were spaced in a grid approximately 55 feet apart. Concurrently with the injections, sodium persulfate levels were monitored at select wells offsite. At the completion of each injection point, the injection well was left in place.

Due to constraints with the foundation of the foundry building, four injection points were moved. The points moved were IP28, IP 30, IP32, and IP34 and their new locations are shown on the attached Figure 1.

A partial round of groundwater monitoring was carried out within one month after the injection and those results are included in Table 1. A full round of groundwater monitoring occurred the week of September 19. Groundwater monitoring results will be submitted once available.

Navistar and KPRG appreciate the constructive relationship and dialogue with the WDNR regarding this site. We look forward to continue working cooperatively in moving this site forward to obtain closure. If there are any questions, please contact me at 262-781-0475.

Sincerely,
KPRG and Associates, Inc.



Joshua D. Davenport, P.E.
Senior Project Engineer

cc: Mr. Ferdinand Alido, Navistar

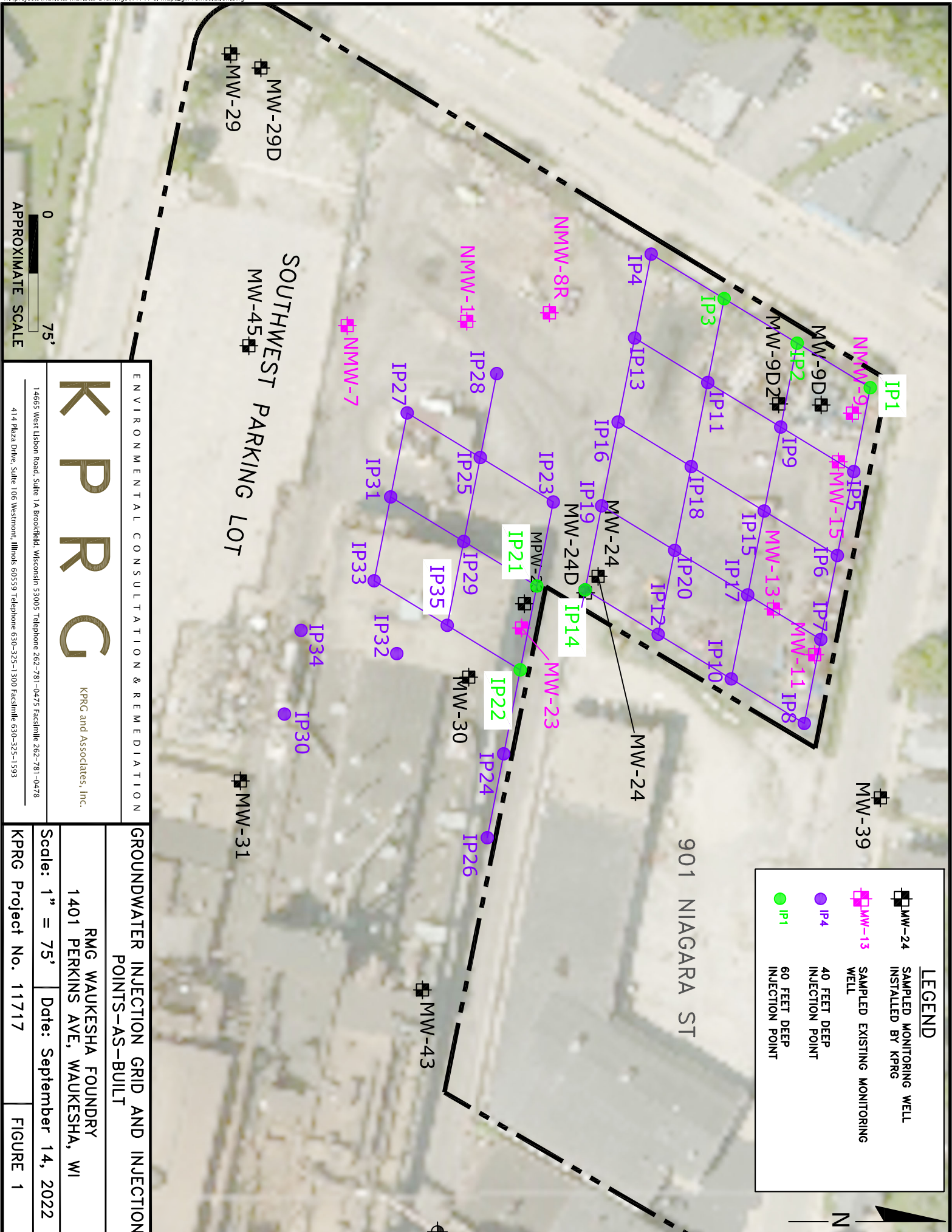
Enclosure

Table 1: Navistar Post-Injection Groundwater Monitoring Results

Well No.	WDNR NR 140 Standards		NMW-9	MW-11	MW-13	MW-15	MW-25R	MW-36	MW-39		
	Parameter	Date	PAL	ES	7/21/2022	7/21/2022	7/21/2022	7/21/2022	7/21/2022	7/21/2022	
	1,1,1-Trichloroethane		40	200	25.3	7.8	23.5	29.6	<0.30	12.6	8.5
	1,1,2-Trichloroethane		0.5	5	<0.34	<0.69	<3.4	<1.7	<0.34	<0.34	<0.69
	1,1-Dichloroethane		85	850	7.6	6.8	30	<1.5	<0.30	3.7	6
	1,1-Dichloroethene		0.7	7	<0.58	<1.2	11.4	<2.9	<0.58	<0.58	1.9J
	1,2-Dichloroethane		0.5	5	<0.29	<0.58	<2.9	<1.5	<0.29	<0.29	<0.58
	cis-1,2-Dichloroethene		7	70	8.1	7.9	56.8	5.6	<0.47	7.2	15
	trans-1,2-Dichloroethene		20	100	<0.53	<1.1	<5.3	13.3	<0.53	<0.53	<1.1
	Tetrachloroethene		0.5	5	<0.41	<0.82	<4.1	<2.0	<0.41	<0.41	<0.82
	Trichloroethene		0.5	5	234	191	1100	219	<0.32	79.6	308
	Vinyl chloride		0.02	0.2	<0.17	<0.35	<1.7	<0.87	<0.17	<0.17	<0.35

Note:

All units are in ug/L



LEGEND

- MW-24 SAMPLED MONITORING WELL INSTALLED BY KPRG
- MW-13 SAMPLED EXISTING MONITORING WELL
- IP 4 40 FEET DEEP INJECTION POINT
- IP 1 60 FEET DEEP INJECTION POINT



ENVIRONMENTAL CONSULTATION & REMEDIATION

K P R G

KPRG and Associates, Inc.

14655 West Lisbon Road, Suite 1A Brookfield, Wisconsin 53005 Telephone 262-781-0475 Facsimile 262-781-0478
 414 Plaza Drive, Suite 106 Westmont, Illinois 60559 Telephone 630-325-1300 Facsimile 630-325-1593

GROUNDWATER INJECTION GRID AND INJECTION POINTS-AS-BUILT

RMG WAUKESHA FOUNDRY
 1401 PERKINS AVE, WAUKESHA, WI

Scale: 1" = 75' Date: September 14, 2022

KPRG Project No. 11717 FIGURE 1