

Dairyland Farm LLC
5420 Gauthier Rd
New Franken, WI 54229



Subject: Manure Spill Report

October 26, 2018

This is letter on behalf of Dairyland Farm LLC responding to the questions regarding manure spill that occurred on October 21, 2018.

Contact person is Larry Dufek, (920) 371-2169, 5420 Gauthier Rd, New Franken, WI 54229.

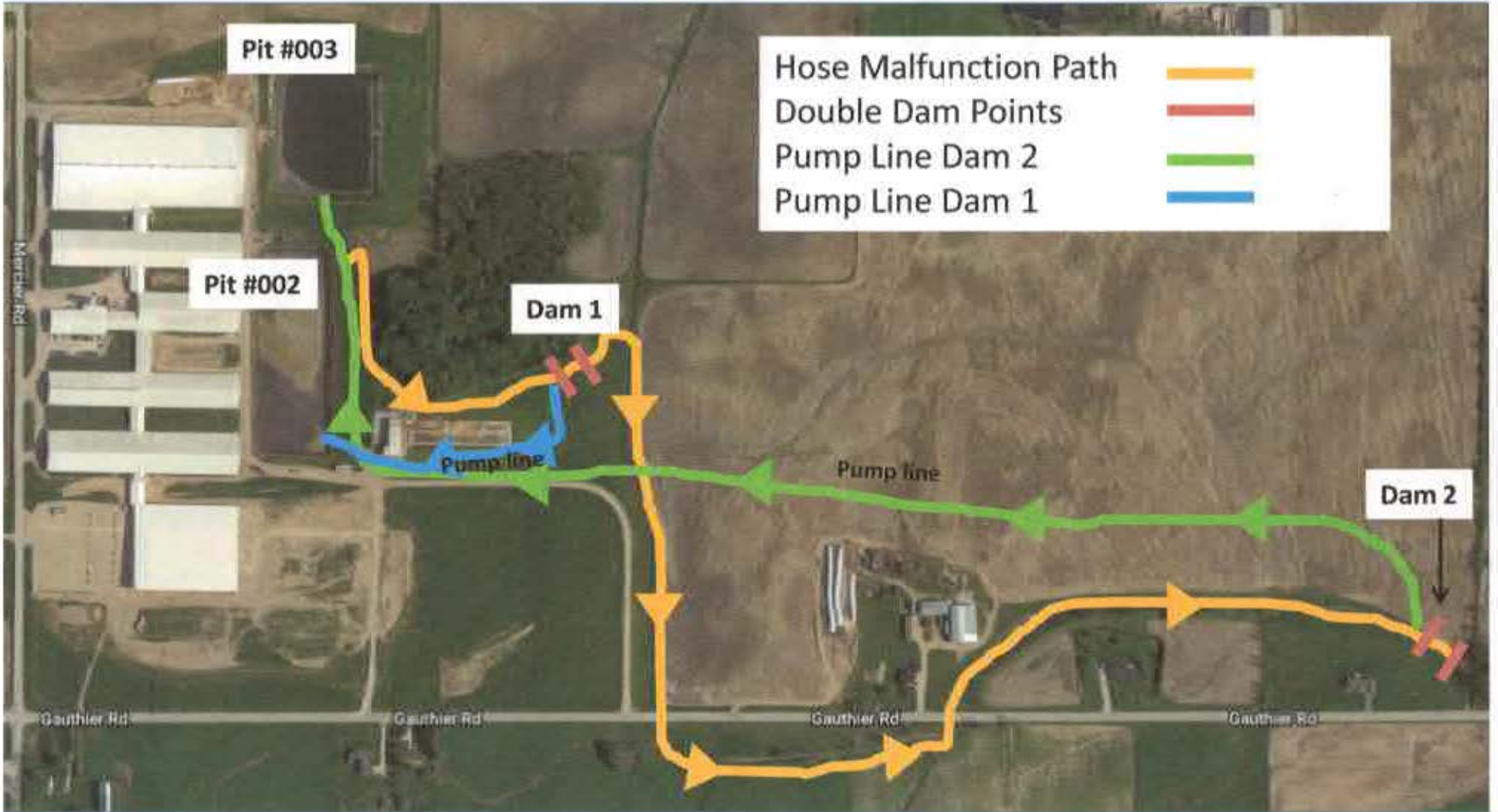
Map of the site is attached in the email showing flow path, dam points, and pumping directions and destinations.

The incident was first discovered at 2:45pm on October 21, 2018 when a hose malfunctioned with a small hole (page 1). Estimation of 10000 to 15000 gallons of treated digested manure was leaked. Dam 2 was immediately installed with two berms of protection by 4:00pm (page 2). We then took two samples of the water prior to pumping area of dam 2 back to manure pit #003. Page 3 illustrates water sampled at 3:30pm and page 4 illustrates water sampled at 3:45pm. Page 5 shows dam 2 being pumped back to pit #003 at 4:30pm. Double,berm dam 1 was installed at 5:00pm (page 6) and then pumped back to pit #002 at 6:00pm. October 22, 2018 started with cleaning any discolored water with a vacuum tank (page 7). Cleanup also continued at the point of the hose malfunction, cleaning consist of using the vacuum tanker with a 2 inch hose (page 8). To estimate the total gallons of cleanup, we used the pit marker in pit #003 with the estimation of 850,000 gallons on October 24, 2018 (page 9). Page 10 shows water sample being taken from dam 2 on October 25, 2018. Page 11 shows the clarity of the water from dam 2. The manure pumps have been pumping from each dam to the manure pits for 24hrs 4days straight. We will inspect hoses hourly going forward in the future.

Regards,

A handwritten signature in black ink that reads "Larry Dufek". The signature is written in a cursive style.

Larry Dufek





1







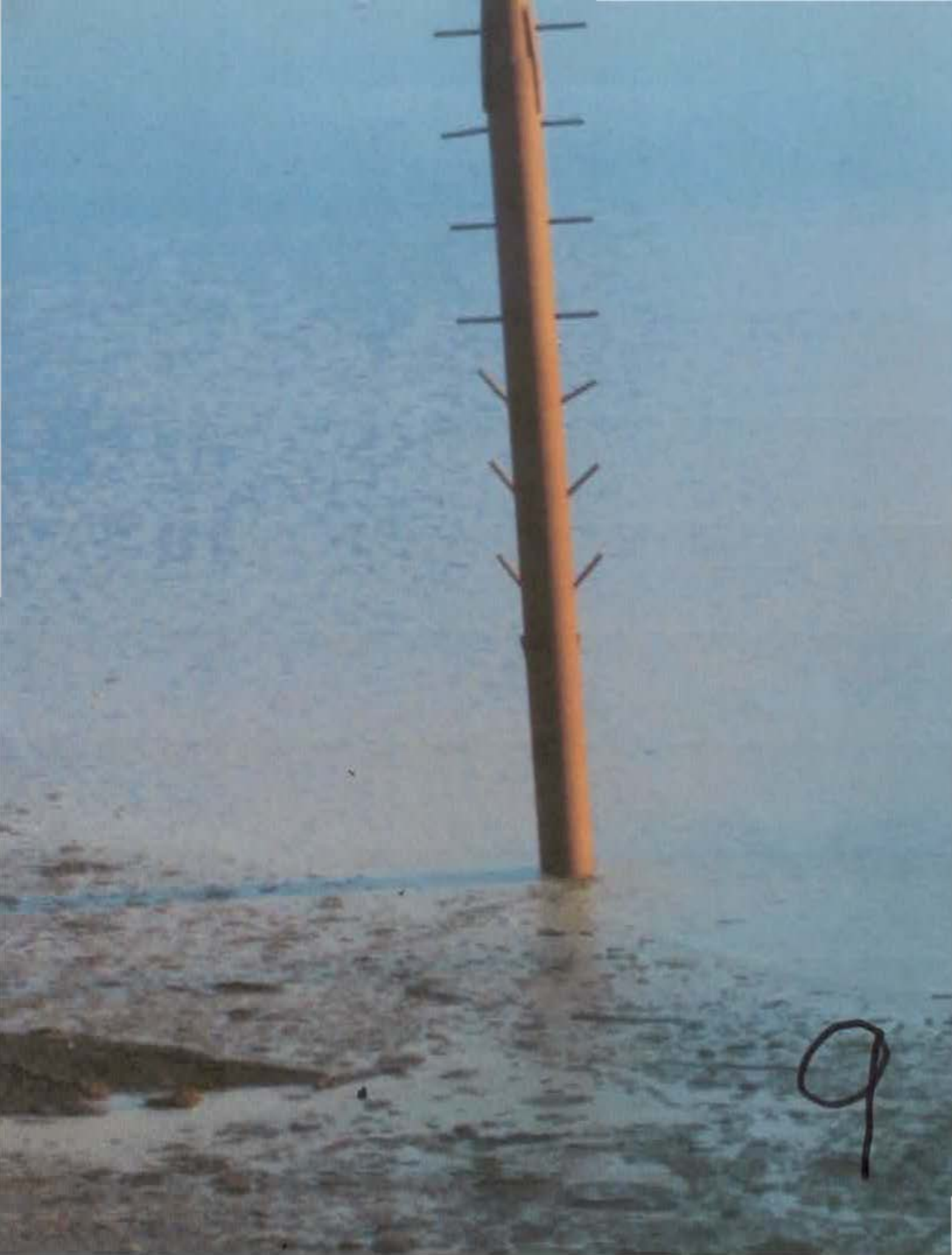




6









10

