

MEMORANDUM

DATE : December 9, 2023

TO : Shane LaFave / Roers Companies, LLC

FROM : Pratap Singh, Ph.D., PE / KSingh

SUBJECT : Weekly Report for the Week Ending 12/09/2023
Community Within the Corridor - East Block

COPY TO : Que El-Amin / Scott Crawford, Inc., Robert Reineke, PE, Robert Fedorchak, PE
Project #40441B

The purpose of this memorandum is to report the test results and provide a summary of the work performed for the referenced project for the week ending 12/09/2023. The following tasks were performed throughout the two weeks:

1. Task #1 - Blower Fan Exhaust Sampling

Samples were collected from blower exhaust of 10 operational blowers. Blower 8 had a recently updated elevated exhaust for which access will be available next week. All blowers had an average flow rate of about 3800 cfm leading to about 0.12 lbs removal of TCE in the last week. Blower 10 had an elevated reading on account of the construction work in Units 1056. A new digital thermal anemometer was used to monitor the exhaust velocity of the blower exhaust.

Since March, we have successfully removed over 3 lbs. of TCE from the site. The individual blower exhaust rates and their corresponding actual TCE removal with Year-To-Date exhaust quantities can be seen in Tables 1 and 2. The layout of the floor plan with the placement of blowers can be found in Figure 1.

2. Task #2 – Additional Excavation Work

Excavation work commenced in the hazardous areas of Units 1056 and 1049 area on 12/04/2023 and is expected to be completed on 12/18/2023. Approximately 33 cu. yards were excavated in the past week. The pictures from the excavation activity and the corresponding air quality readings can be found in Attachment A.

Attachments

KSingh has included the following figures, tables, and pictures for reference:

- Figure 1: CWC EB Floor Plan
- Table 1: Blower Fan Exhaust Data Table for December
- Table 2: Blower Fan Exhaust Data Table since March
- Attachment A: Indoor Air Quality and Pictures of areas of Excavation

East Building Level 1



Figure 1 - CWC EB Level 1 Map with Blower, Vapor Pin and Sump Locations

Table 1: Blower Fan Exhaust Data Table for December

GC TCE Measurements of Blower Effluent and Estimated Removal Rates						
Date: December 8, 2023						
Blower No.	Pipe Diameter	Exhaust Velocity	Flow Rate	TCE Concentration	TCE Removal Rate	TCE Removal
	inches	fpm	cfm	ug/m3	lbs/day	lbs
1	4	3990	348	6.2	0.000194	0.001358
2	4	3916	342	13.5	0.000415	0.002903
2A	4	3900	340	26.1	0.000799	0.005590
3 and 4	6	5137	1009	4.6	0.000417	0.002920
5	4	3966	346	289.9	0.009020	0.063138
6	4	3811	333	81.2	0.002428	0.016993
7	4	2905	254	17.5	0.000399	0.002792
8	4					
9	4	3244	283	32.6	0.000830	0.005807
10	4	3156	275	89.4	0.002213	0.015494
11	4	3614	315	36.7	0.001041	0.007284
			3845		Total	0.12


Table 2: Blower Fan Exhaust Data Table since March

TCE Measurements of Blower Effluent and Removal									
TCE Removal (lbs in Month)									
Blower No.	May	June	July	August	September	October	November	December	Total
1	0.0172	0.0619	0.0250	0.0039	0.0049	0.0033	0.0043	0.0014	0.1218
2	0.0313	0.0206	0.0190	0.0149	0.0144	0.0166	0.0158	0.0029	0.1355
2A				0.0277	0.0201	0.0170	0.0234	0.0056	0.0938
3+4	0.0241	0.0154	0.0387	0.0471	0.0220	0.0154	0.0312	0.0029	0.1968
5		0.4196	0.2556	0.3277	0.1883	0.3067	0.3441	0.0631	1.9051
6		0.0229	0.0085	0.0886	0.0445	0.0669	0.0776	0.0170	0.3261
7		0.0093	0.0210	0.0179	0.0000	0.0212	0.0100	0.0028	0.0822
8		0.0015		0.0052	0.0066	0.0035	0.0924	0.0000	0.1091
9				0.0001	0.0004	0.0011	0.0395	0.0058	0.0468
10					0.0003	0.0011	0.0197	0.0155	0.0366
11					0.0252	0.0292	0.0219	0.0073	0.0836
Total	0.0726	0.5511	0.3677	0.5330	0.3267	0.4821	0.6799	0.1243	3.1374
Cumulative Flow Rate (cfm)	1342	2078	2766	3523	3817	4422	4182	3845	25975

Attachment A

Indoor Air Quality Readings and Pictures

Daily TCE Detection Log
Community Within the Corridor – East Block
2748 N. 32nd Street, Milwaukee, WI

Date:	12/04/2023
Testing Performed by:	K. Singh & Associates, Inc., Ph: 262-821-1171
Engineer on Site:	Sameer Neve, Ph.D., ENV SP, Cell: 551-262-9210
Signature:	

No.	Location	Time	TCE Reading (ppb)	>25 ppm
1	SW Garage	7:35	< 0.1	No
2	Unit 1049	7:41	0.3	No
3	Unit 1056	8:19	0.16	No
4	Unit 1049	13:35	0.5	No
5	Unit 1056	13:45	0.33	No
6	Unit 1049	15:49	1.7	No
7	Unit 1056	15:54	2.3	No
8	N Mech Room	16:00	0.47	No
9	SW Garage	16:06	< 0.1	No
10				
11				
12				
13				
14				
15				
16				
17				
18				

** Note that Workplace Safety Limit for TCE by OSHA is 100 ppm and NIOSH is 25 ppm.

** It is strongly recommended to wear a fit-tested respirator in the construction areas, and to wear appropriate Personal Protective Equipment at all times.

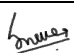
**For more information on TCE, please scan the QR Code or visit these links:

<https://www.dhs.wisconsin.gov/chemical/trichloroethylene.htm> and

<https://www.epa.gov/sites/default/files/2016-09/documents/trichloroethylene.pdf>



Daily TCE Detection Log
Community Within the Corridor – East Block
2748 N. 32nd Street, Milwaukee, WI

Date:	12/05/2023
Testing Performed by:	K. Singh & Associates, Inc., Ph: 262-821-1171
Engineer on Site:	Sameer Neve, Ph.D., ENV SP, Cell: 551-262-9210
Signature:	

No.	Location	Time	TCE Reading (ppb)	>25 ppm
1	Unit 1049	6:54	49.5	No
2	Unit 1056	7:02	82.5	No
3	SW Garage	7:10	190	No
4	Hallway outside 1056	7:16	237	No
5	Unit 1049	9:05	476	No
6	Unit 1056	9:16	401	No
7	SW Garage	9:24	308	No
8	Hallway outside 1056	9:37	323	No
9	Blower 10	9:44	315	No
10	SW Garage	11:05	296	No
11	Unit 1049	11:12	379	No
12	Unit 1056	11:22	381	No
13	Hallway outside 1056	11:31	272	No
14	Hallway outside 1056	11:38	231	No
15	Unit 1049	16:21	207	No
16	Unit 1056	16:30	175	No
17	N Mech Room	16:37	0.2	No
18				

** Note that Workplace Safety Limit for TCE by OSHA is 100 ppm and NIOSH is 25 ppm.

** It is strongly recommended to wear a fit-tested respirator in the construction areas, and to wear appropriate Personal Protective Equipment at all times.


**For more information on TCE, please scan the QR Code or visit these links:

<https://www.dhs.wisconsin.gov/chemical/trichloroethylene.htm> and

<https://www.epa.gov/sites/default/files/2016-09/documents/trichloroethylene.pdf>



Daily TCE Detection Log
Community Within the Corridor – East Block
2748 N. 32nd Street, Milwaukee, WI

Date:	12/06/2023
Testing Performed by:	K. Singh & Associates, Inc., Ph: 262-821-1171
Engineer on Site:	Sameer Neve, Ph.D., ENV SP, Cell: 551-262-9210
Signature:	

No.	Location	Time	TCE Reading (ppb)	>25 ppm
1	Unit 1049	11:09	4.7	No
2	Unit 1056	11:23	24.5	No
3	SW Garage	14:04	35.6	No
4	Unit 1049	14:12	8.9	No
5	Unit 1056	15:52	23	No
6	Hallway outside 1056	15:59	5.6	No
7	N Mech Room	16:07	6.6	No
8				
9				
10				
11				
12				
13				
14				
15				
16				
17				
18				

** Note that Workplace Safety Limit for TCE by OSHA is 100 ppm and NIOSH is 25 ppm.


** It is strongly recommended to wear a fit-tested respirator in the construction areas, and to wear appropriate Personal Protective Equipment at all times.

**For more information on TCE, please scan the QR Code or visit these links:

<https://www.dhs.wisconsin.gov/chemical/trichloroethylene.htm> and
<https://www.epa.gov/sites/default/files/2016-09/documents/trichloroethylene.pdf>



Daily TCE Detection Log
Community Within the Corridor – East Block
2748 N. 32nd Street, Milwaukee, WI

Date:	12/07/2023
Testing Performed by:	K. Singh & Associates, Inc., Ph: 262-821-1171
Engineer on Site:	Sameer Neve, Ph.D., ENV SP, Cell: 551-262-9210
Signature:	

No.	Location	Time	TCE Reading (ppb)	>25 ppm
1	SW Garage	7:36	1.2	No
2	Unit 1049	7:44	15.8	No
3	SW Garage	9:43	17.8	No
4	Unit 1049	9:51	20.6	No
5	Unit 1049	13:23	34.1	No
6	Hallway outside 1056	13:31	19.4	No
7	N Mech Room	16:17	< 0.1	No
8	Unit 1049	16:23	23	No
9				
10				
11				
12				
13				
14				
15				
16				
17				
18				

** Note that Workplace Safety Limit for TCE by OSHA is 100 ppm and NIOSH is 25 ppm.


** It is strongly recommended to wear a fit-tested respirator in the construction areas, and to wear appropriate Personal Protective Equipment at all times.

**For more information on TCE, please scan the QR Code or visit these links:

<https://www.dhs.wisconsin.gov/chemical/trichloroethylene.htm> and
<https://www.epa.gov/sites/default/files/2016-09/documents/trichloroethylene.pdf>



Daily TCE Detection Log
Community Within the Corridor – East Block
2748 N. 32nd Street, Milwaukee, WI

Date:	12/08/2023
Testing Performed by:	K. Singh & Associates, Inc., Ph: 262-821-1171
Engineer on Site:	Sameer Neve, Ph.D., ENV SP, Cell: 551-262-9210
Signature:	

No.	Location	Time	TCE Reading (ppb)	>25 ppm
1	SW Garage	6:48	1.6	No
2	Unit 1049	6:59	18.2	No
3	SW Garage	8:26	1.5	No
4	Unit 1049	8:57	21.3	No
5	Hallway outside 1056	9:05	4.6	No
6	N Mech Room	11:44	< 0.1	No
7	Unit 1049	13:22	36.5	No
8	Unit 1049	15:01	34.2	No
9	Unit 1049	16:09	34.1	No
10				
11				
12				
13				
14				
15				
16				
17				
18				

** Note that Workplace Safety Limit for TCE by OSHA is 100 ppm and NIOSH is 25 ppm.

** It is strongly recommended to wear a fit-tested respirator in the construction areas, and to wear appropriate Personal Protective Equipment at all times.

**For more information on TCE, please scan the QR Code or visit these links:

<https://www.dhs.wisconsin.gov/chemical/trichloroethylene.htm> and

<https://www.epa.gov/sites/default/files/2016-09/documents/trichloroethylene.pdf>

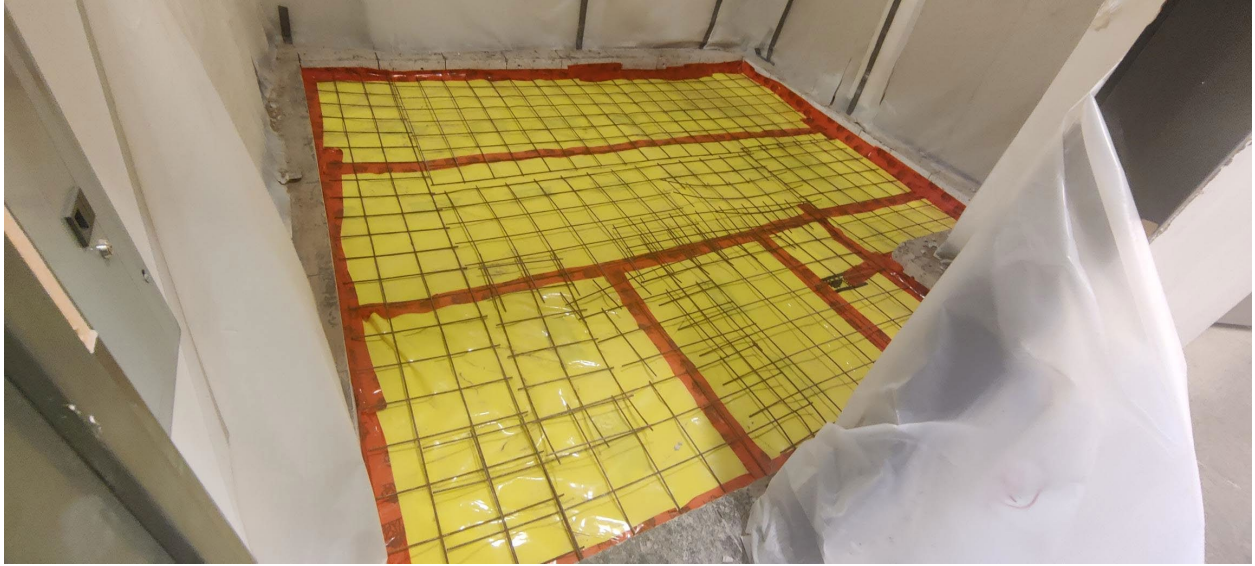




Picture 1 – Excavated Area in Unit 1044 with Extraction Point



Picture 2 – Excavated Area in Unit 1045 – Living Room



Picture 3 – Excavated Area in Unit 1045 - Bedroom



Picture 4 – Excavated Area in Unit 1050



Picture 5 – Excavated Area in Unit 1056



Picture 6 – Excavated Area in Unit 1049