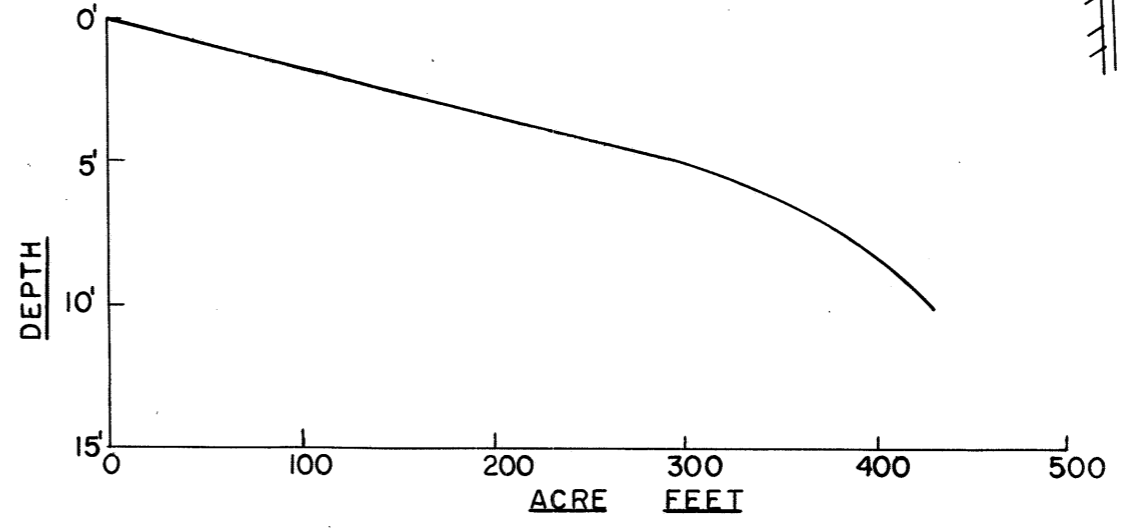
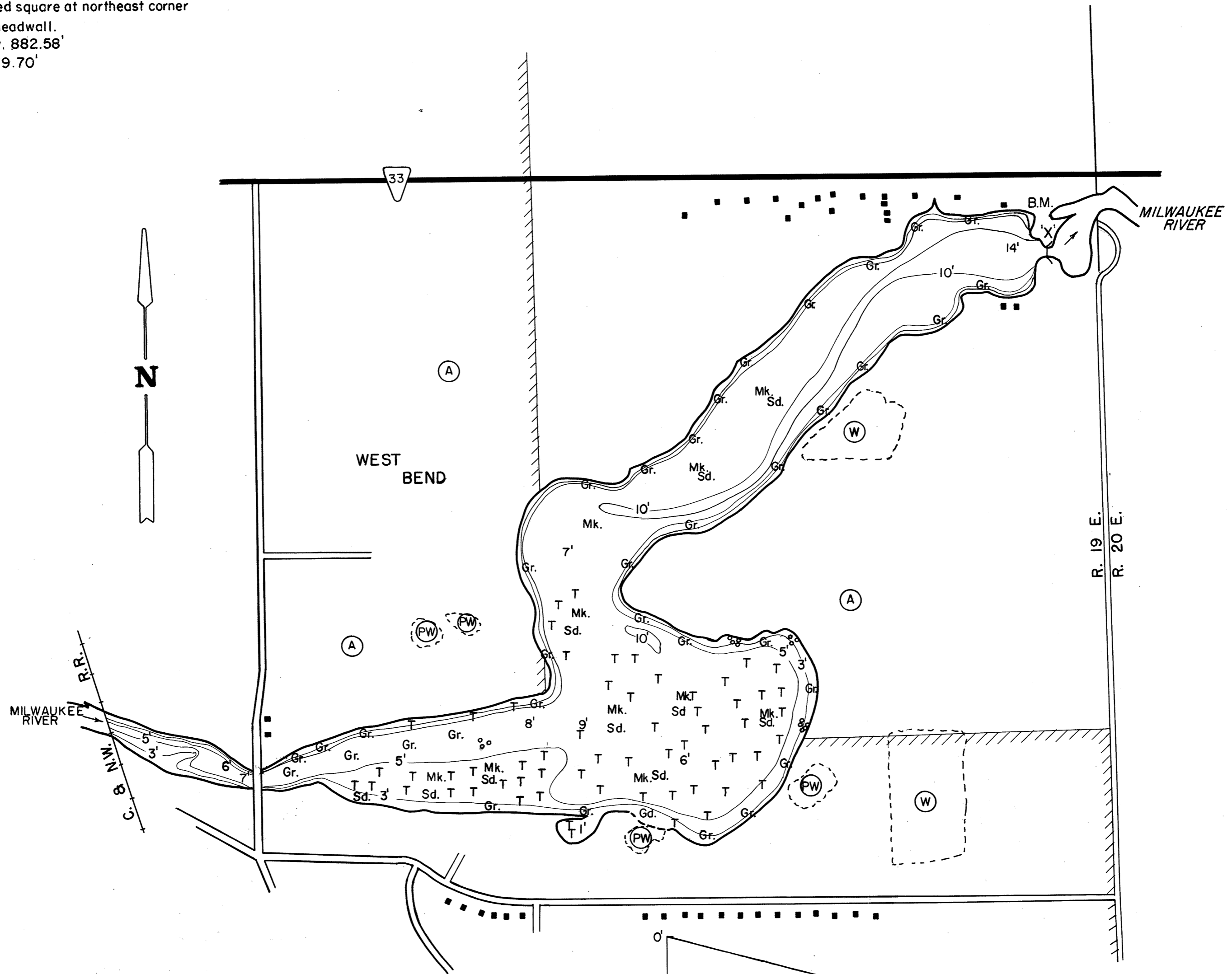


S.E.W.R.P.C. ML-F41
Bench Mark. Chiseled square at northeast corner
of dam on concrete headwall.
Mean Sea Level Elev. 882.58'
Water Elevation 879.70'

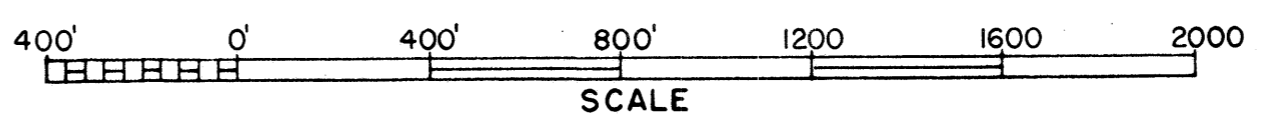


EQUIPMENT SONAR & RANGE POLE MAPPED JUNE 1968
MO. YR.

WATER ELEV. 879.70

- TOPOGRAPHIC SYMBOLS
- (B) Brush
 - (PW) Partially wooded
 - (W) Wooded
 - (C) Cleared
 - (P) Pastured
 - (A) Agricultural
 - B.M. Bench Mark
 - Dwelling
 - Resort
 - ||||| Steep slope
 - - - Indefinite shoreline
 - Marsh
 - Spring
 - Intermittent stream
 - Permanent inlet
 - Permanent outlet
 - Dam

- LAKE BOTTOM SYMBOLS
- P. Peat
 - Mk. Muck
 - C. Clay
 - M. Marl
 - Sd. Sand
 - St. Silt
 - Gr. Gravel
 - R. Rubble
 - Br. Bedrock
 - T Submergent vegetation
 - ⊥ Emergent vegetation
 - ⊠ Floating vegetation
 - ⊙ Stumps & Snags



◇ Access ◆ Access with Parking ◆ Boat Livery
Field work by G. Werdin, T. Koch Drawn by R. Ripp

SPECIES OF FISH		
	Abundant	Rare
Muskie		
N. Pike		X
Walleye		
L.M. Bass	X	
S.M. Bass		
Panfish	X	
Trout		

AREA 66.65 ACRES
UNDER 3FT. 12 %
OVER 20FT. 0 %
VOLUME 426.7 ACRE FT.
TOTAL ALK. 238 P.P.M.
SHORELINE 2.7 MILES
MAX. DEPTH 14 FEET

Source: Wisconsin Department of Natural Resources 608-266-2621
West Bend Pond – Washington County, Wisconsin DNR Lake Map
Date – Jun 1968 - Historical Lake Map - Not for Navigation
A Public Document - Please Identify the Source when using it.