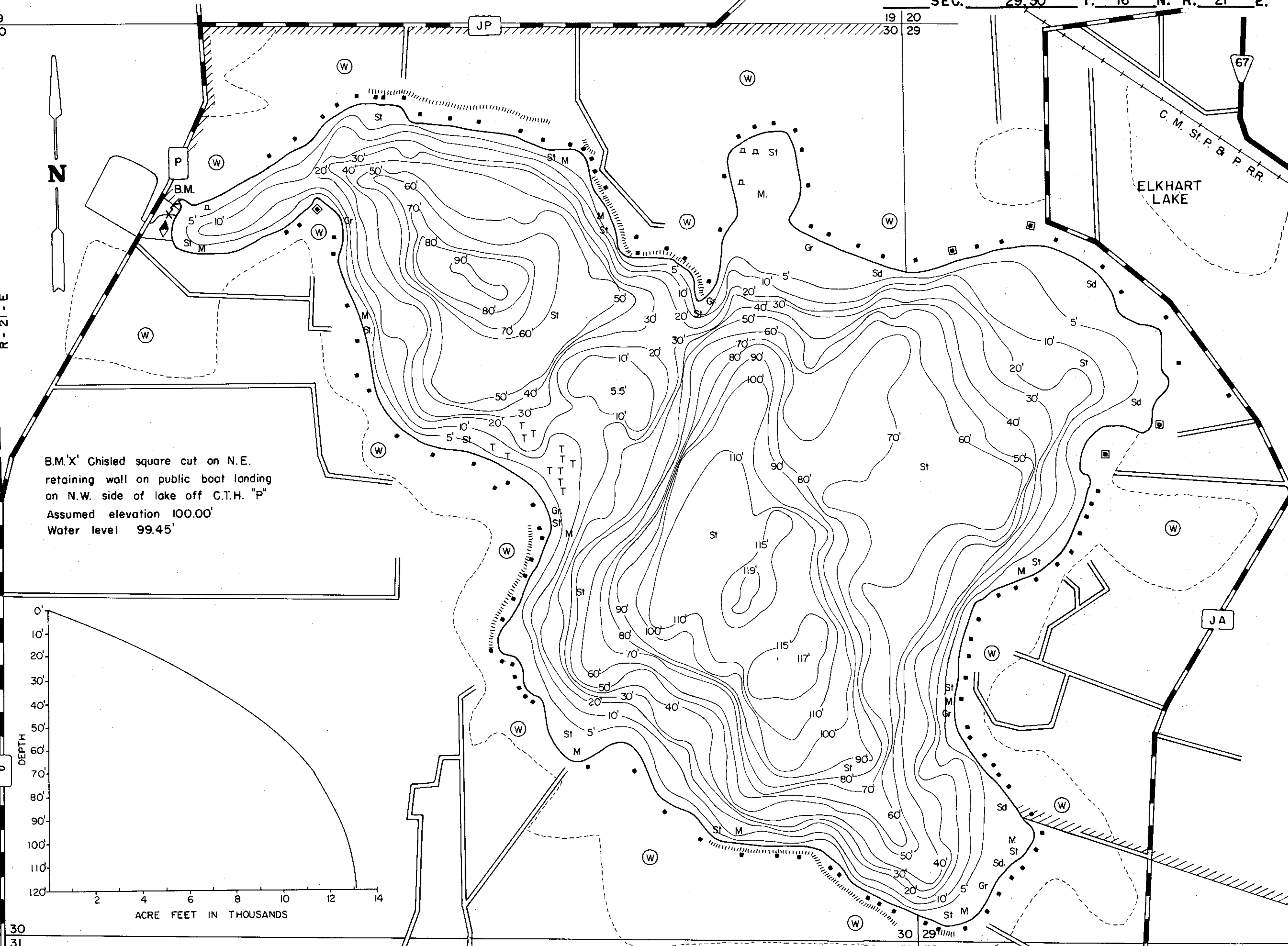
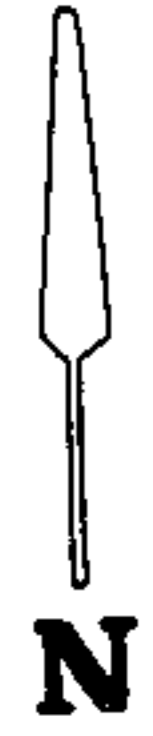


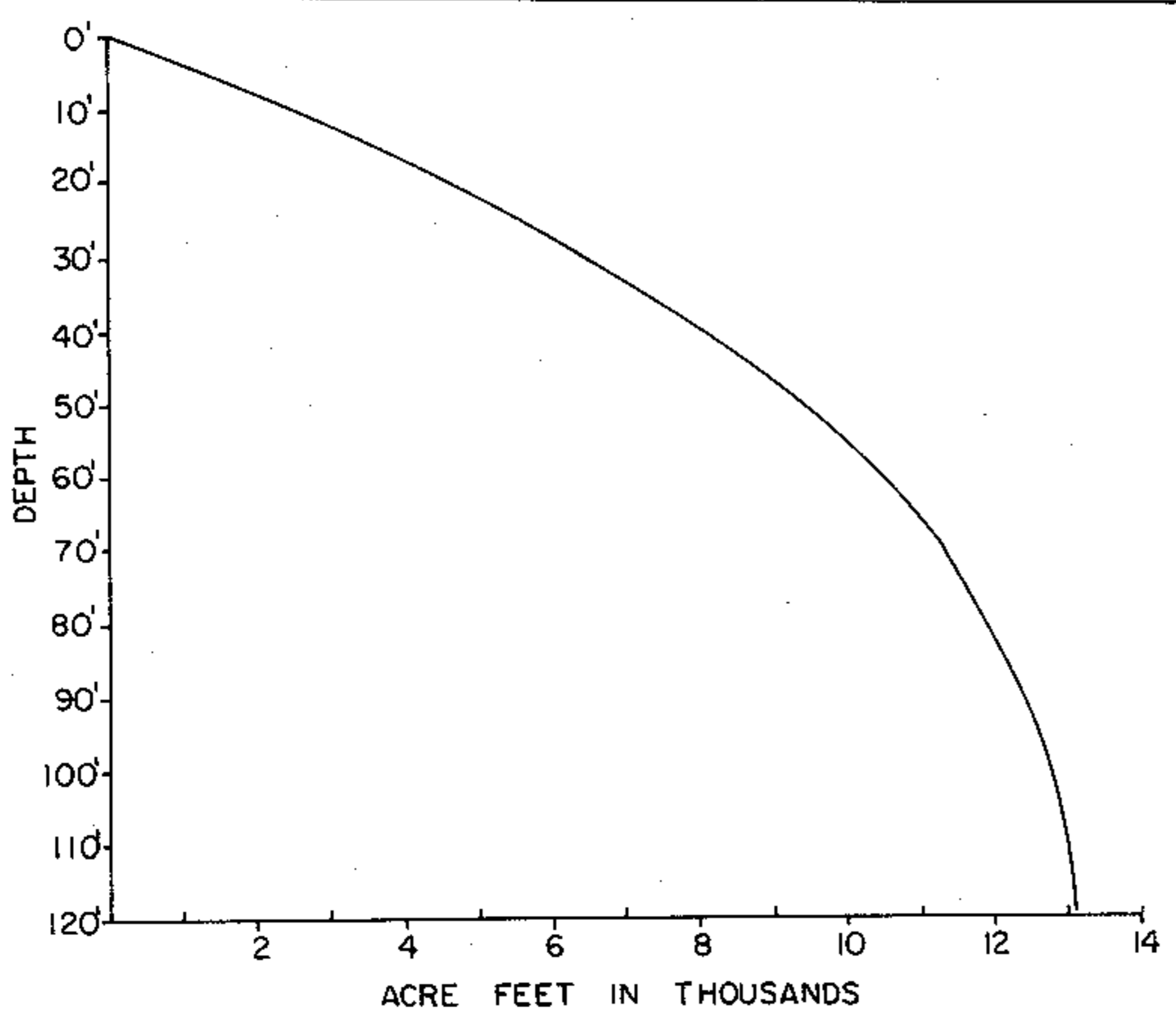
24 19
25 30

19 20
30 29

R-20-E
R-21-E



B.M. X' Chisled square cut on N.E.
retaining wall on public boat landing
on N.W. side of lake off C.T.H. "P"
Assumed elevation 100.00'
Water level 99.45'



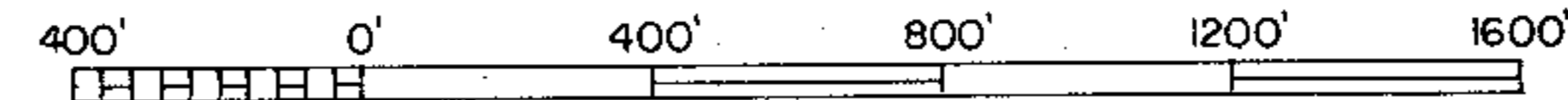
25 30
36 31

30 29
31 32

EQUIPMENT RECORDING SONAR MAPPED JULY 1972

- TOPOGRAPHIC SYMBOLS
- (B) Brush
 - (PW) Partially wooded
 - (W) Wooded
 - (C) Cleared
 - (P) Pastured
 - (A) Agricultural
 - B.M. Bench Mark
 - Dwelling
 - Resort
 - ⊠ Camp
 - ||||| Steep slope
 - - - Indefinite shoreline
 - Marsh
 - Spring
 - Intermittent stream
 - Permanent inlet
 - Permanent outlet
 - Dam
 - D.N.R. State owned land

- LAKE BOTTOM SYMBOLS
- P. Peat
 - Mk. Muck
 - C. Clay
 - M. Marl
 - Sd. Sand
 - St. Silt
 - Gr. Gravel
 - R. Rubble
 - Br. Bedrock
 - B Boulders
 - Stumps & Snags
 - Rock danger to navigation
 - T Submergent vegetation
 - Emergent vegetation
 - Floating vegetation
 - Brush shelters



SCALE
◆ Access ◆ Access with Parking ◆ Boat Livery

Drawn by: C. Holt
Field work by: D. Boese, M. Schrage

SPECIES OF FISH	Abundance		
	Abundant	Common	Present
Muskie			
N. Pike	X		
Walleye	X		
L.M. Bass	X		
S.M. Bass	X		
Panfish	X		
Trout			
Splake			X

WATER AREA 286.1 ACRES
 UNDER 3 FT. 8 %
 OVER 20 FT. 67 %
 MAX. DEPTH 119 FEET.
 TOTAL ALK. 166 P.P.M.
 VOLUME 13,088 ACRE FT.
 SHORELINE 3.74 MILES

Source: Wisconsin Department of Natural Resources 608-266-2621
Elkhart Lake – Sheboygan County, Wisconsin DNR Lake Map
Date – Jul 1972 - Historical Lake Map - Not for Navigation
A Public Document - Please Identify the Source when using it.