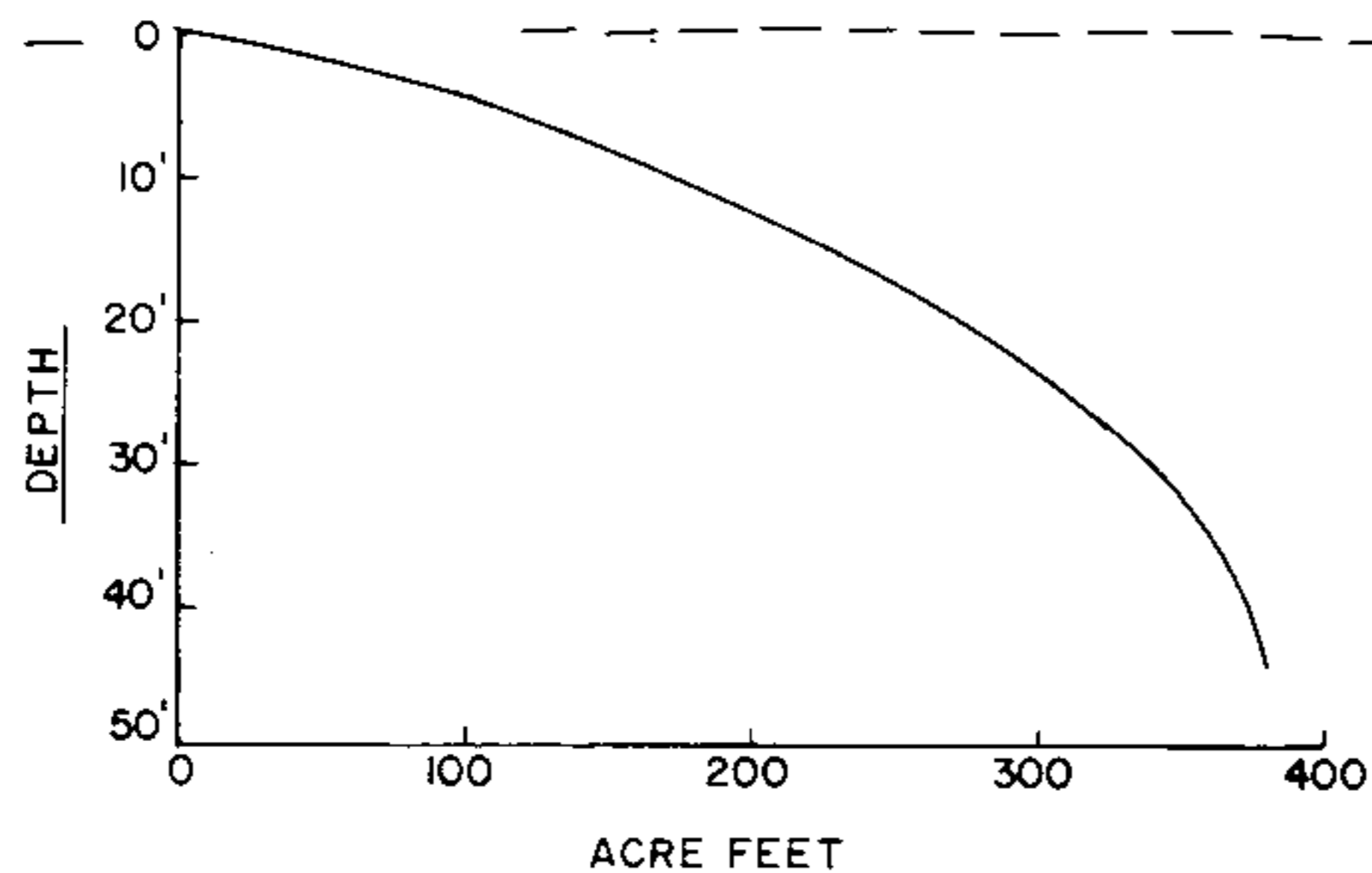
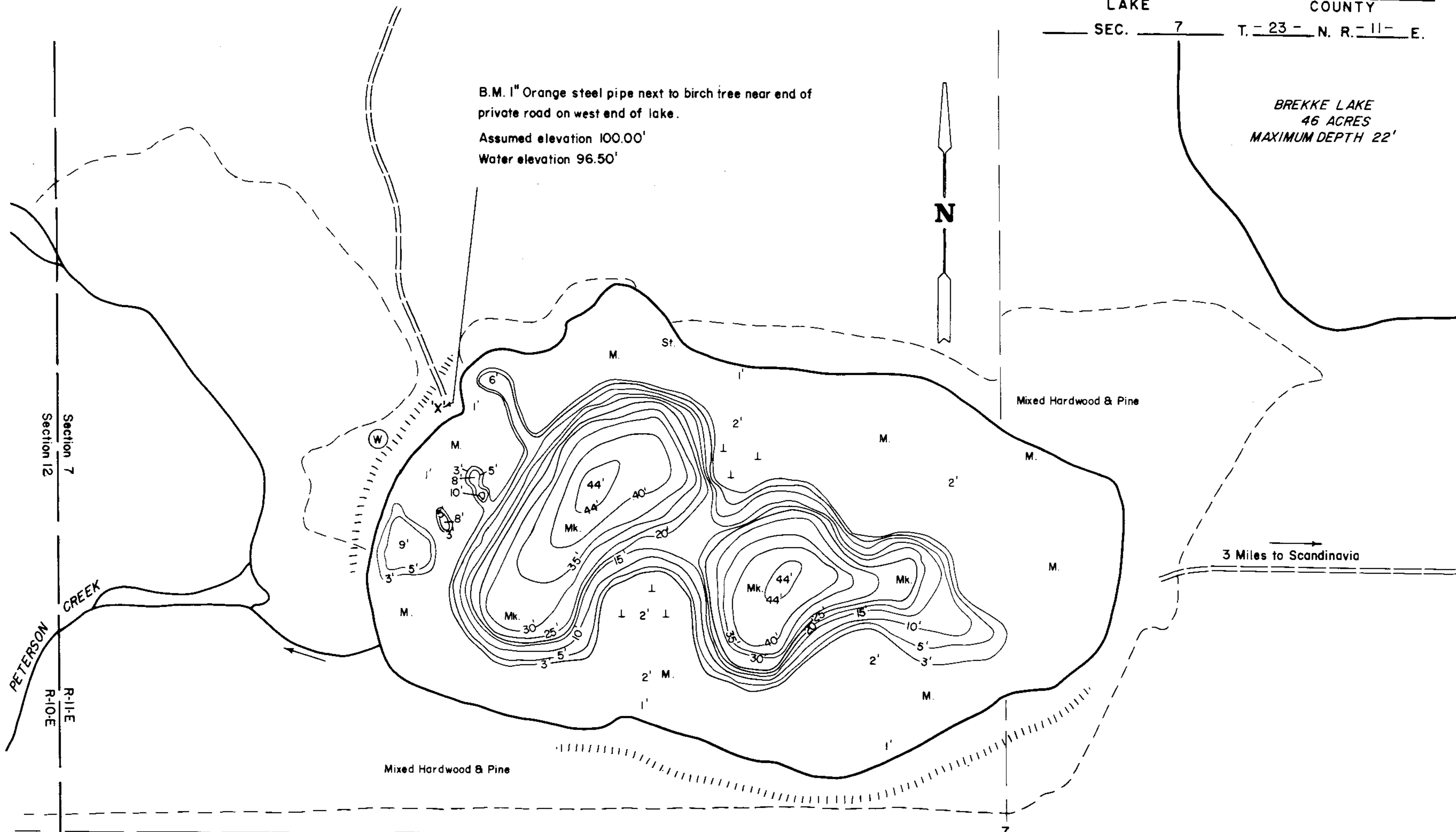


B.M. 1" Orange steel pipe next to birch tree near end of private road on west end of lake.
Assumed elevation 100.00'
Water elevation 96.50'

BREKKE LAKE
46 ACRES
MAXIMUM DEPTH 22'

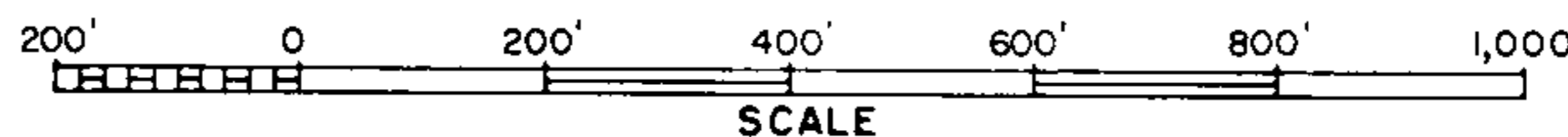


SPECIES OF FISH		
	Abundant	Rare
Muskie		
N. Pike	X	
Walleye		
L.M. Bass	X	
S.M. Bass		
Panfish	X	
Trout		

EQUIPMENT RECORDING SONAR MAPPED MAY 1966
MO. YR.

WATER ELEV. 96.50'

- | TOPOGRAPHIC SYMBOLS | | LAKE BOTTOM SYMBOLS | |
|-----------------------|----------------------|---------------------|-----------------------------|
| (B) Brush | Steep slope | P. Peat | Gr. Gravel & Stumps & Snags |
| (PW) Partially wooded | Indefinite shoreline | Mk. Muck | R. Rubble |
| (W) Wooded | Marsh | C. Clay | Br. Bedrock |
| (C) Cleared | Spring | M. Marl | T Submergent vegetation |
| (P) Pastured | Intermittent stream | Sd. Sand | ↑ Emergent vegetation |
| (A) Agricultural | Permanent inlet | St. Silt | ≡ Floating vegetation |
| B.M. Bench Mark | Permanent outlet | | |
| ■ Dwelling | Dam | | |
| □ Resort | | | |



◇ Access ◇ Access with Parking ◆ Boat Livery
Field work by: H. Schumde, T. Corbett Drawn by: J. Roth

AREA 39.3 ACRES
UNDER 3FT. 61.8 %
OVER 20FT. 21.1 %
VOLUME 380.1 ACRE FT.
TOTAL ALK. 203 P.P.M.
SHORELINE 1.0 MILES
MAX. DEPTH 44 FEET

Source: Wisconsin Department of Natural Resources 608-266-2621
Rollofson Lake – Waupaca County, Wisconsin DNR Lake Map
Date – May 1966 - Historical Lake Map - Not for Navigation
A Public Document - Please Identify the Source when using it.