

Big Muskego Lake
Water Depth (cm)

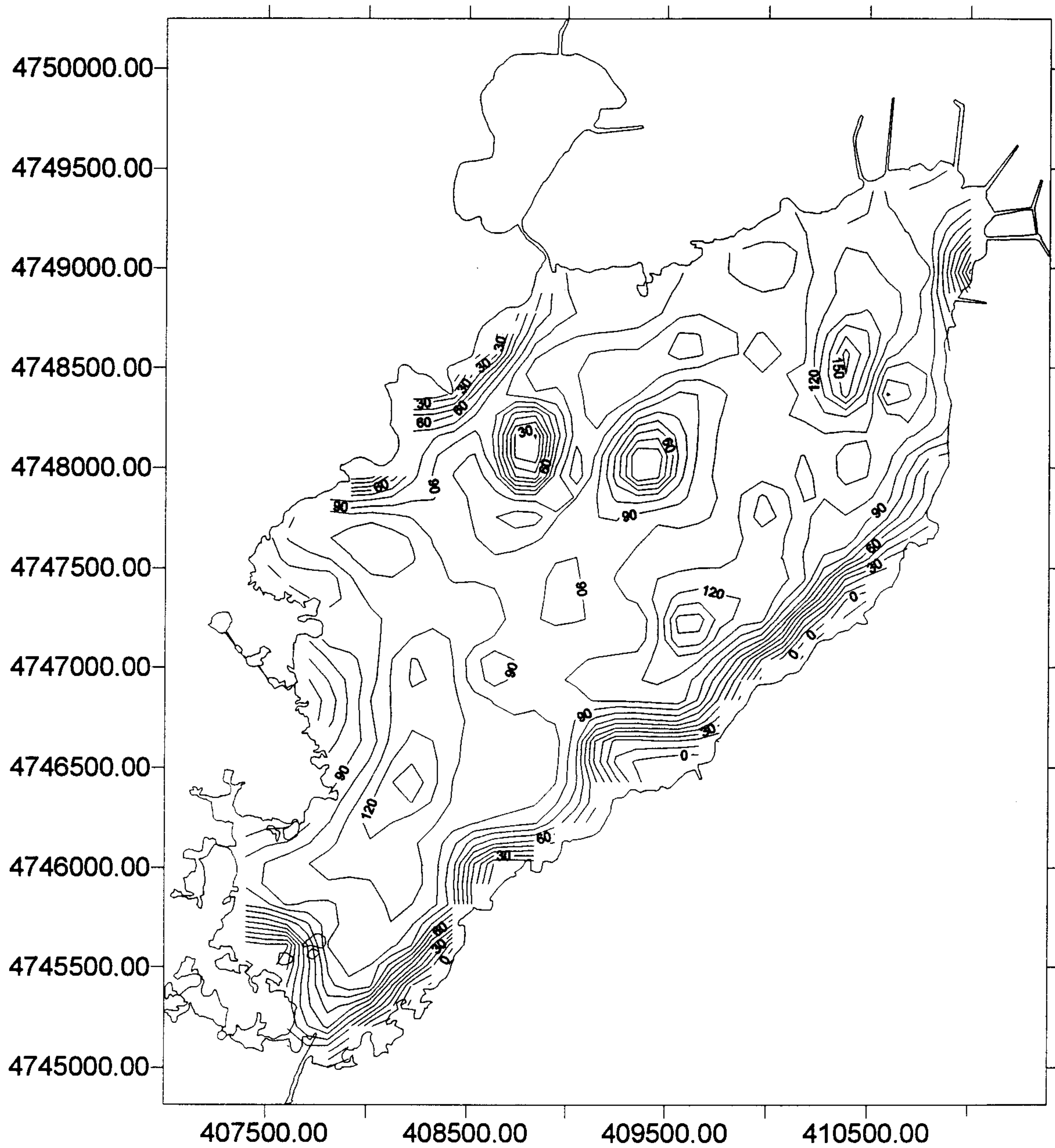
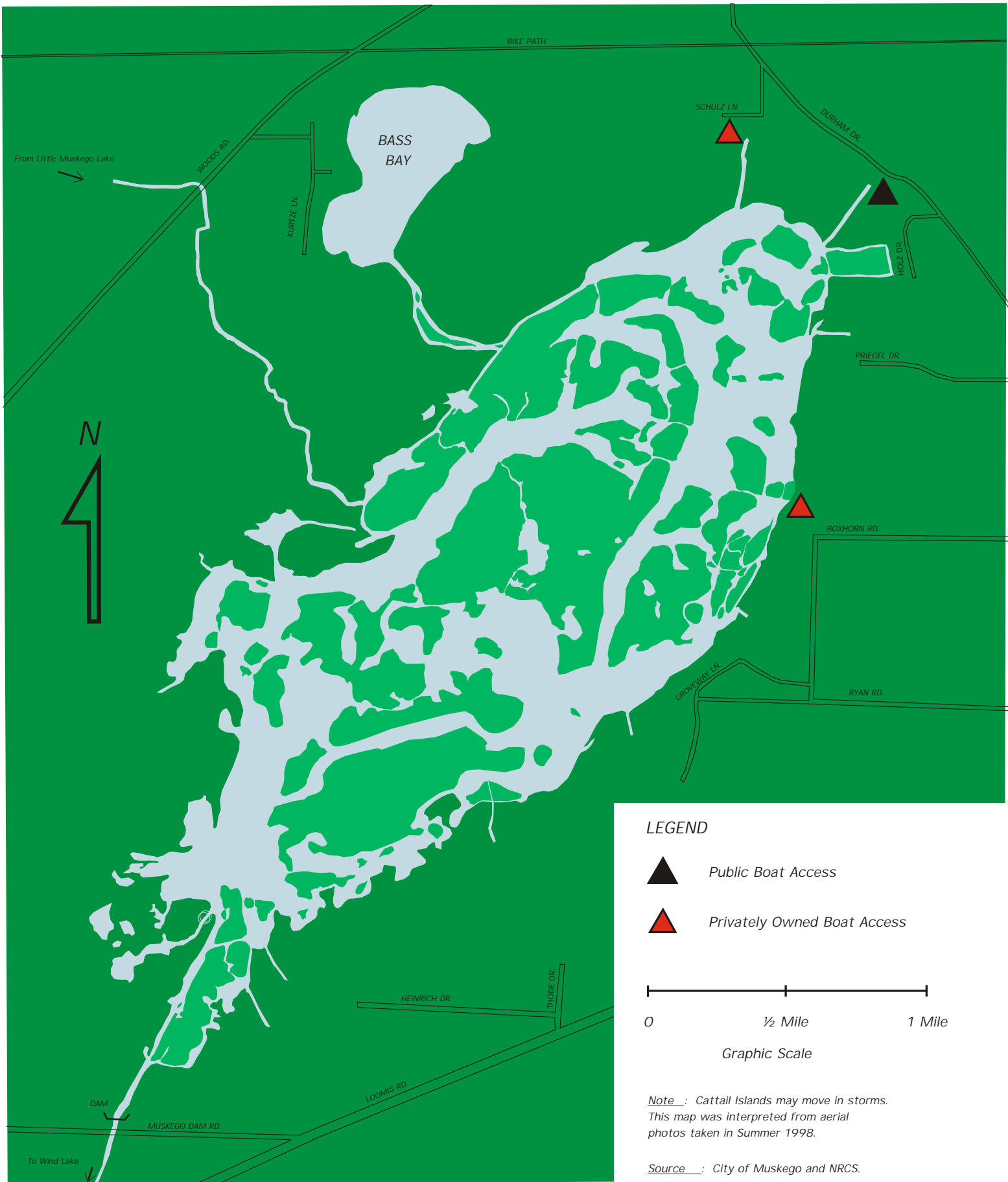




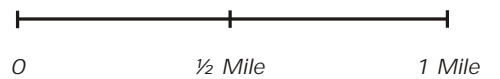
Figure 15. Contour plot of water depth (cm) in Big Muskego Lake.

BIG MUSKEGO LAKE MAP



LEGEND

-  Public Boat Access
-  Privately Owned Boat Access



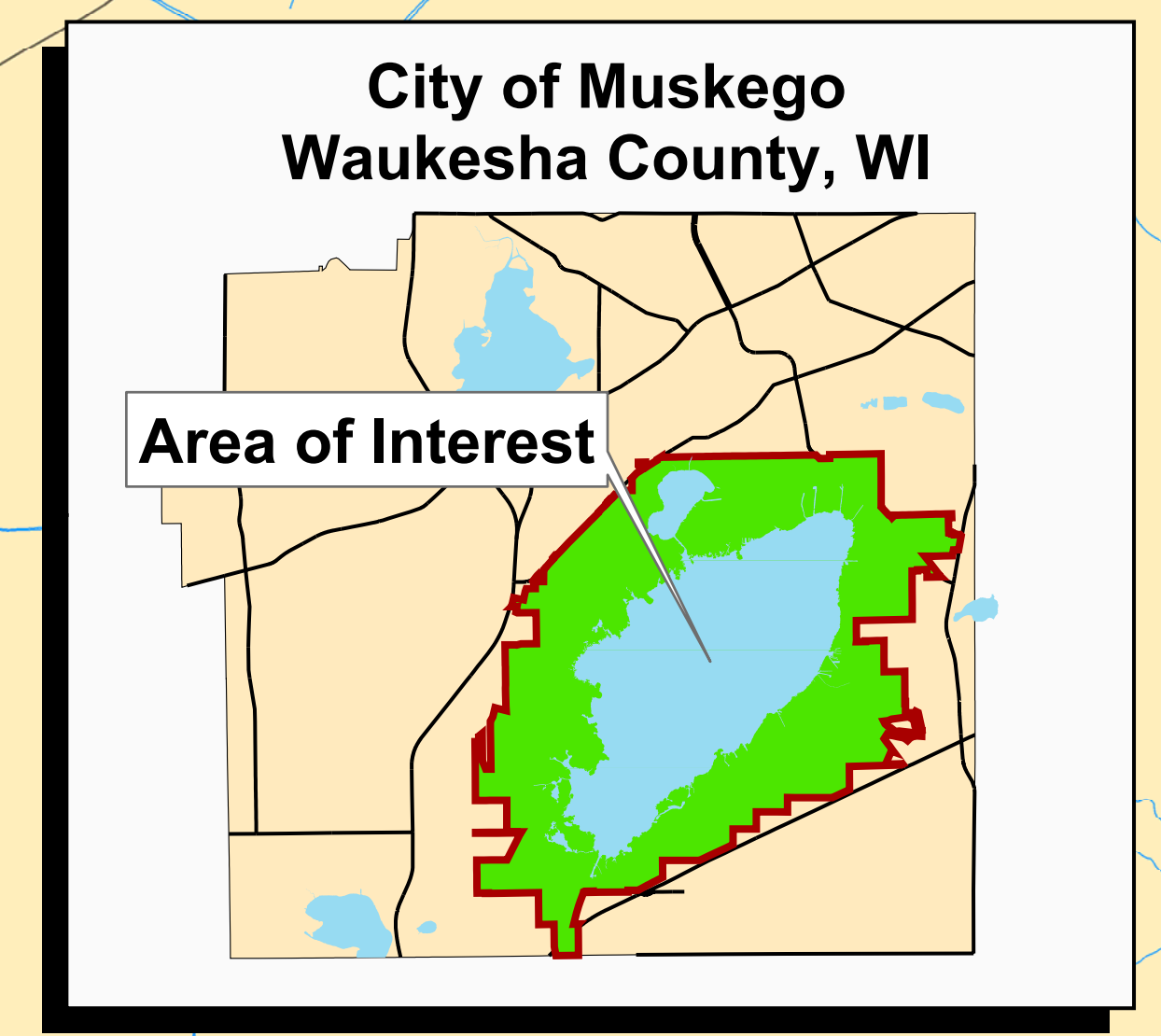
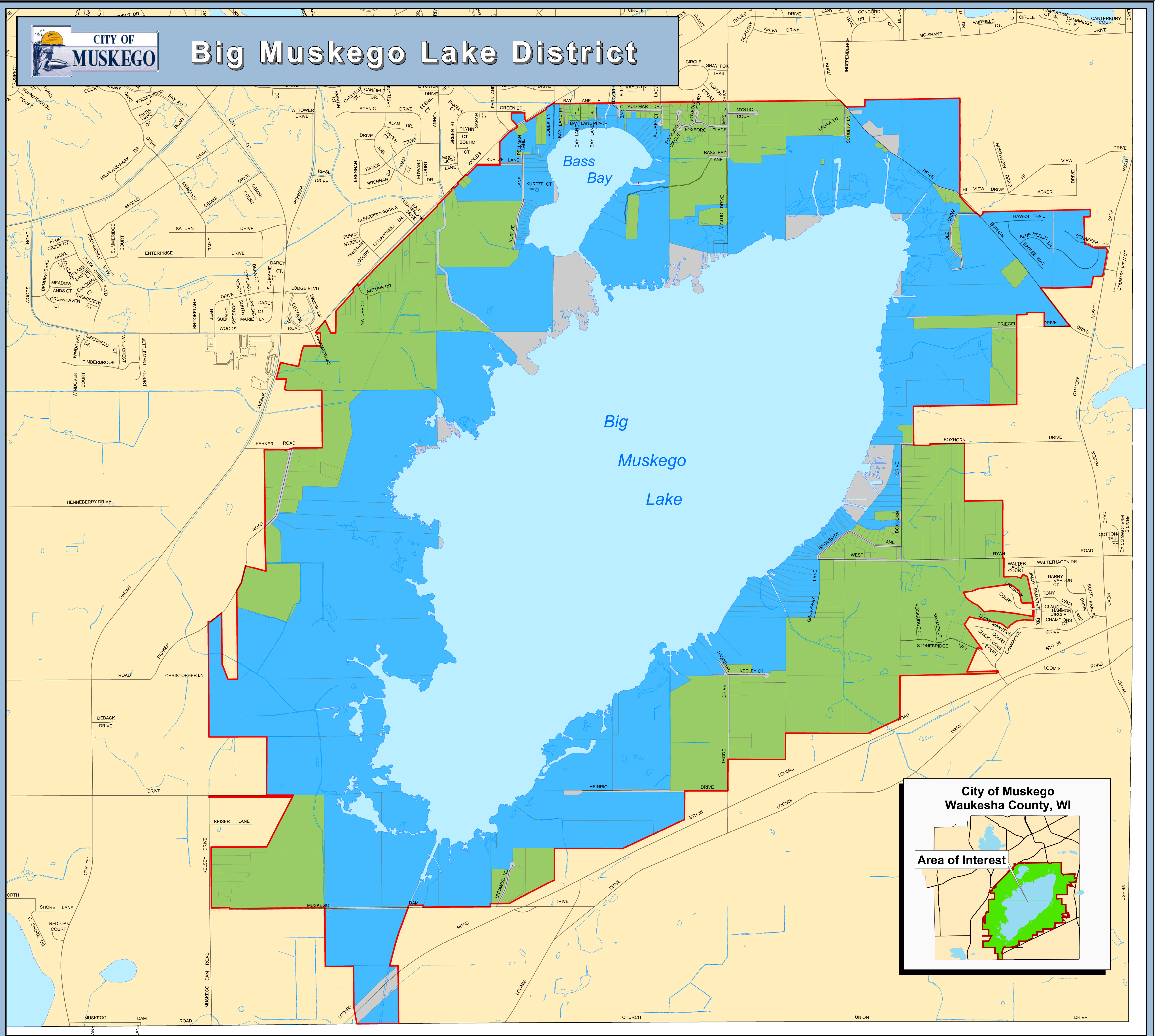
Graphic Scale

Note : Cattail Islands may move in storms.
This map was interpreted from aerial photos taken in Summer 1998.

Source : City of Muskego and NRCS.



Big Muskego Lake District



LEGEND

- Big Muskego Lake District Properties
- Back Lot
- Lake Lot
- Gap Parcels, N/A Parcels, Right-of-Way, or Water Features
- District boundary
- Road right-of-way
- Property boundary
- Lake
- Surface water

Big Muskego Lake is a shallow 2,260-acre flow-through lake fringed with cattail-dominated wetlands and encompassing numerous islands of cattail marsh. Most of Big Muskego Lake is less than four feet deep with generally a muck bottom.

Bass Bay is a 100-acre connected embayment of Big Muskego Lake that has a deeper basin typical of other glacially formed "kettle lakes" in the region. Bass Bay has a maximum depth of 23 feet and has a bottom substrate of predominantly muck with some isolated sandy shoreline areas.

A recent rehabilitation project has enhanced the fish and wildlife of Bass Bay and Big Muskego Lake. During the winter of 1996-1997, the Wisconsin DNR in cooperation with the City of Muskego and Big Muskego Lake/Bass Bay Protection and Rehabilitation District and numerous local organizations, drew the lake level down and chemically eradicated the rough fish species in the Bay and Lake.

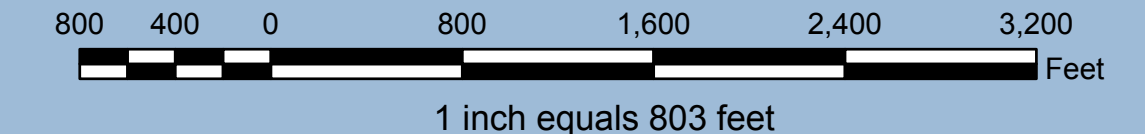
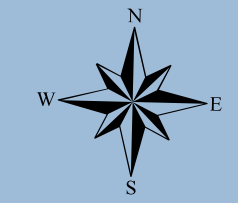
The Big Muskego Lake Protection and Rehabilitation District is a governmental entity that includes residents who live on (Lake Lot) and around (Back Lot) the lake. Elected District members conduct management projects including nuisance aquatic plant control, education, lake quality restoration, and watershed protection.

DISCLAIMER

The recipient of digital information ("Product") is hereby advised that the product was originally prepared for use by the City of Muskego ("City") for its internal purposes only, and was not designed or intended for general use by members of the public. The City makes no representation or warranty as to the Product's accuracy or location or any map features thereon.

THE CITY DISCLAIMS ANY WARRANTY OF MERCHANTABILITY OR WARRANTY FOR FITNESS OF USE FOR A PARTICULAR PURPOSE, EXPRESS OR IMPLIED, WITH RESPECT TO THIS PRODUCT.

Any user of this Product accepts the same as is, with all faults, and assumes all responsibility for use thereof, and further covenants and agrees to hold the City, its officials, officers, employees, agents, consultants, and volunteers harmless from and against any and all damage, loss, or liability arising from or resulting from the use of the Product. Independent verification of all data contained in the Product should be obtained by the user of the Product.



Created by the City of Muskego
Planning Department
October 1, 2002
Updated: September 22, 2004