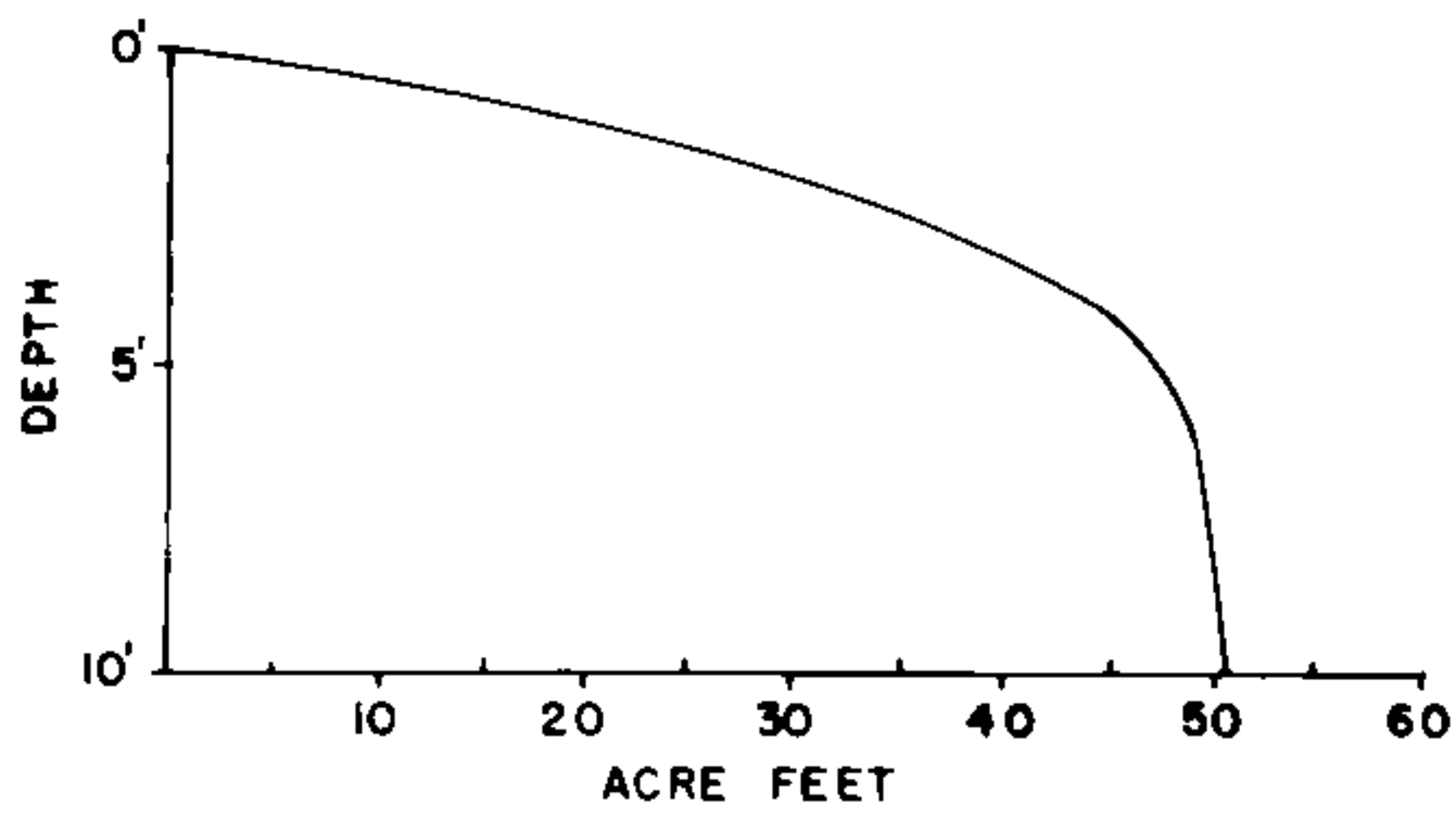
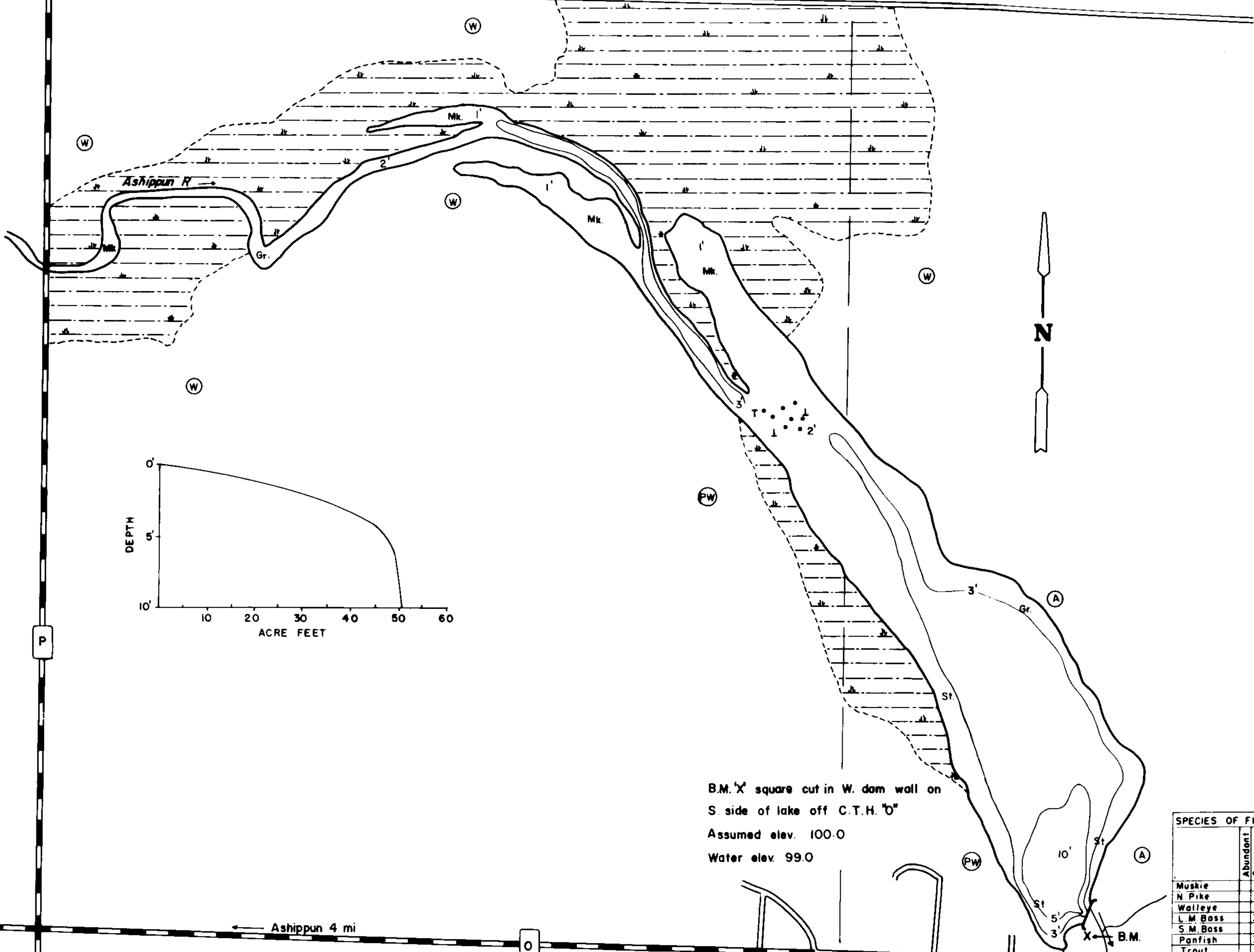


22 23  
27 26



B.M. 'X' square cut in W. dam wall on S. side of lake off C.T.H. 'O'  
Assumed elev. 100.0  
Water elev. 99.0

SPECIES OF FISH	Abundance	
	Common	Rare
Muskie		
N. Pike	X	
Walleye		
L. M. Bass	X	
S. M. Bass		
Panfish	X	
Trout		

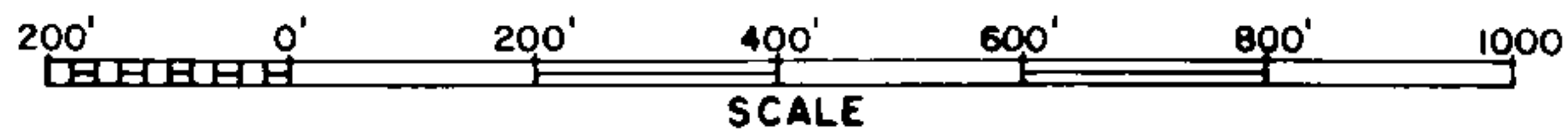
EQUIPMENT RECORDING SONAR MAPPED MAY 1966  
MO. YR.

- TOPOGRAPHIC SYMBOLS
- (B) Brush
  - (PW) Partially wooded
  - (W) Wooded
  - (C) Cleared
  - (P) Pastured
  - (A) Agricultural
  - B.M. Bench Mark
  - Dwelling
  - Resort

WATER ELEV. 99.0'

- LAKE BOTTOM SYMBOLS
- P. Peat
  - Mk. Muck
  - C. Clay
  - M. Marl
  - Sd. Sand
  - St. Silt
  - Gr. Gravel
  - R. Rubble
  - Br. Bedrock
  - Stumps & Snags
  - T Submergent vegetation
  - ↓ Emergent vegetation
  - ≡ Floating vegetation

VILLAGE OF ALDERLEY



◇ Access      ◇ Access with Parking      ◆ Boat Livery  
Field work by T. Corbett, H. Schumde      Drawn by C. Halt

AREA 18.8 ACRES  
UNDER 3FT. 59 %  
OVER 20FT. 0 %  
VOLUME 50.7 ACRE FT.  
TOTAL ALK. 260 P.P.M.  
SHORELINE 2.4 MILES  
MAX. DEPTH 10 FEET

Source: Wisconsin Department of Natural Resources 608-266-2621  
Alderley Lake – Dodge County, Wisconsin DNR Lake Map  
Date – May 1966 - Historical Lake Map - Not for Navigation  
A Public Document - Please Identify the Source when using it.