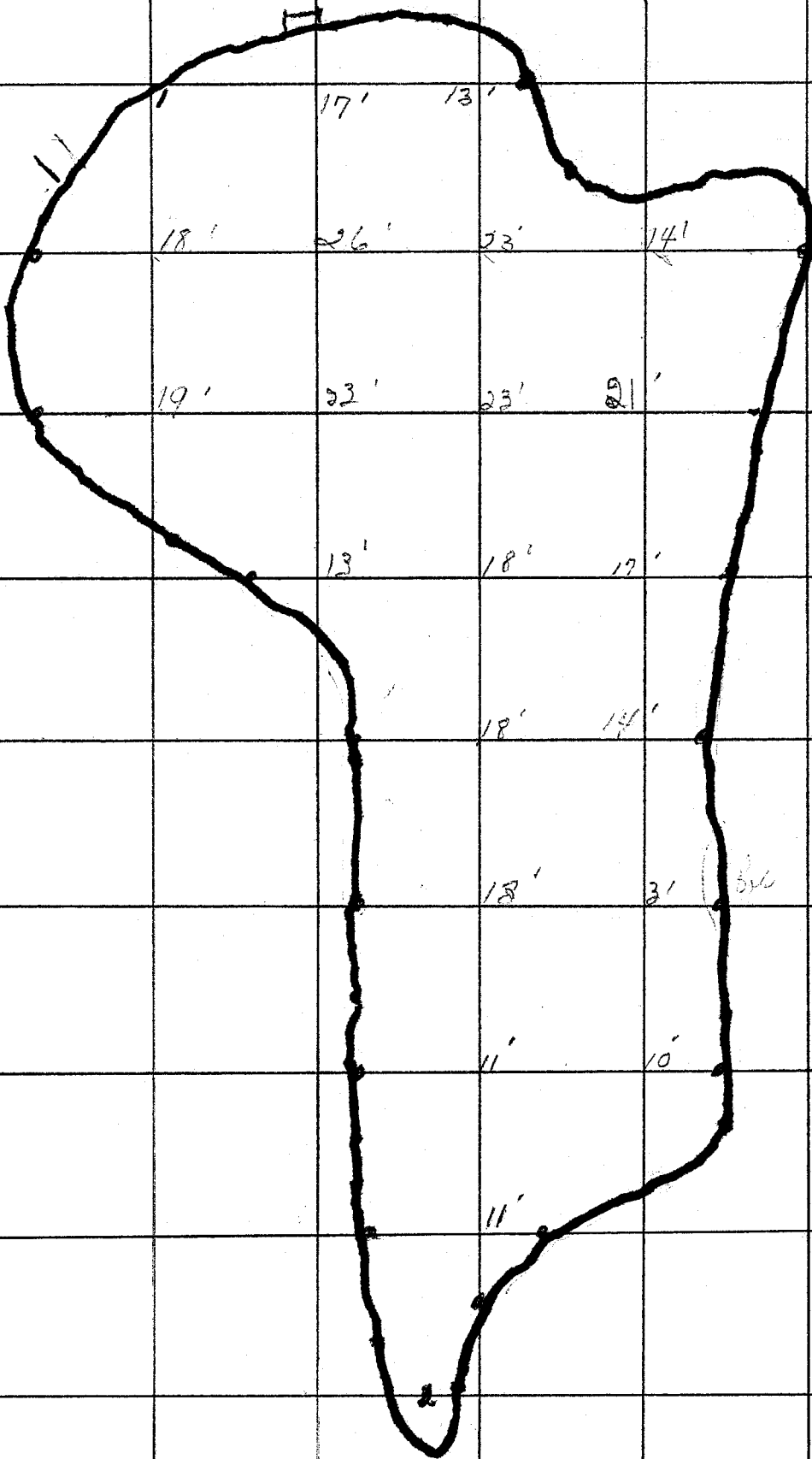


PERCH LAKE 2-36-2
ONEIDA CO.



Av. Depth 15.1 ft.
 acreage. 23.4 acres

Perch Lake
 Oneida Co.

Source: Wisconsin Department of Natural Resources 608-266-2621
Perch Lake (T36N R07E Sec.2 SW of SE)– Oneida County, Wisconsin DNR Lake Map
Date –Unknown - Historical Lake Map - Not for Navigation
A Public Document - Please Identify the Source when using it.