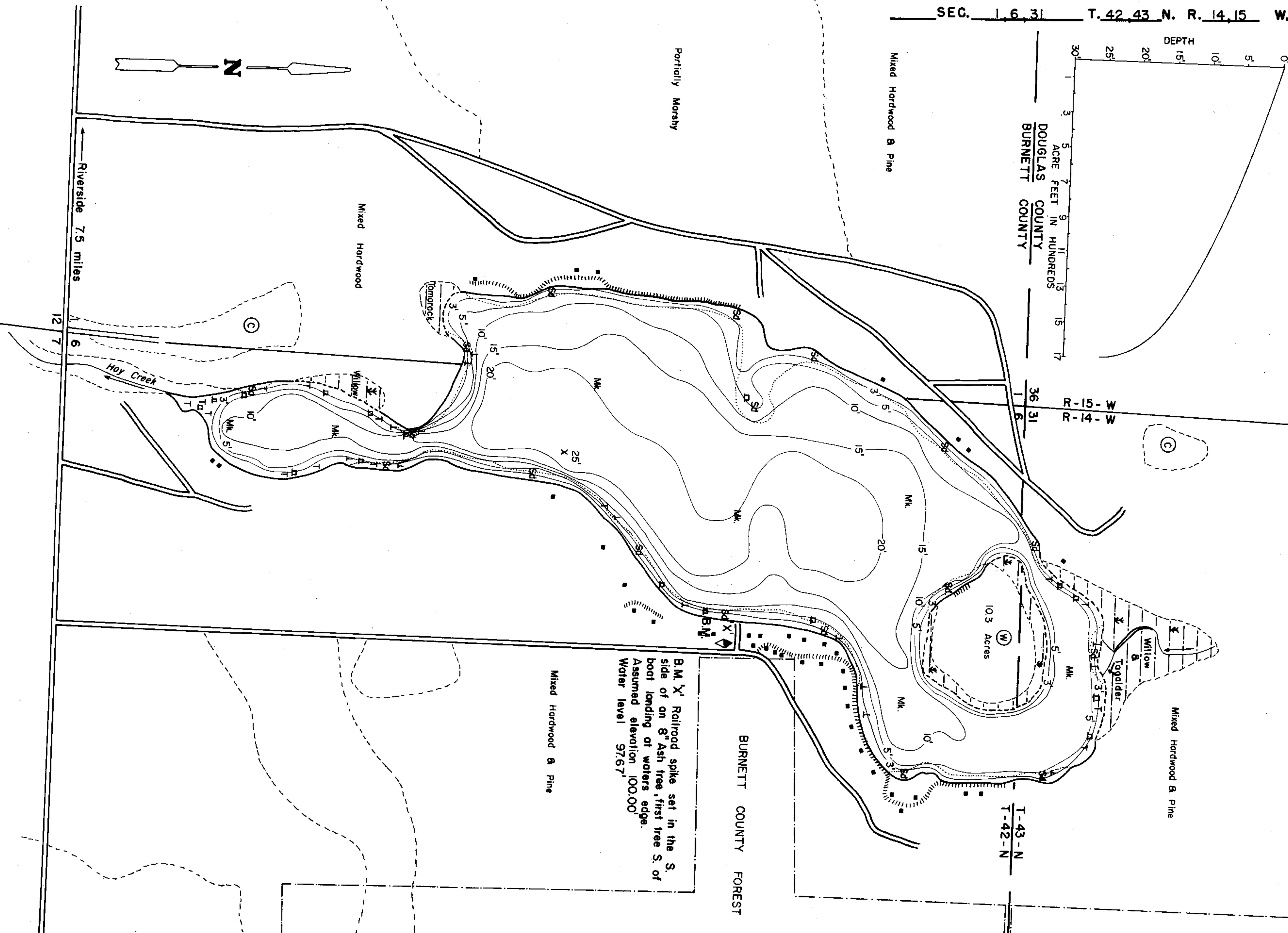
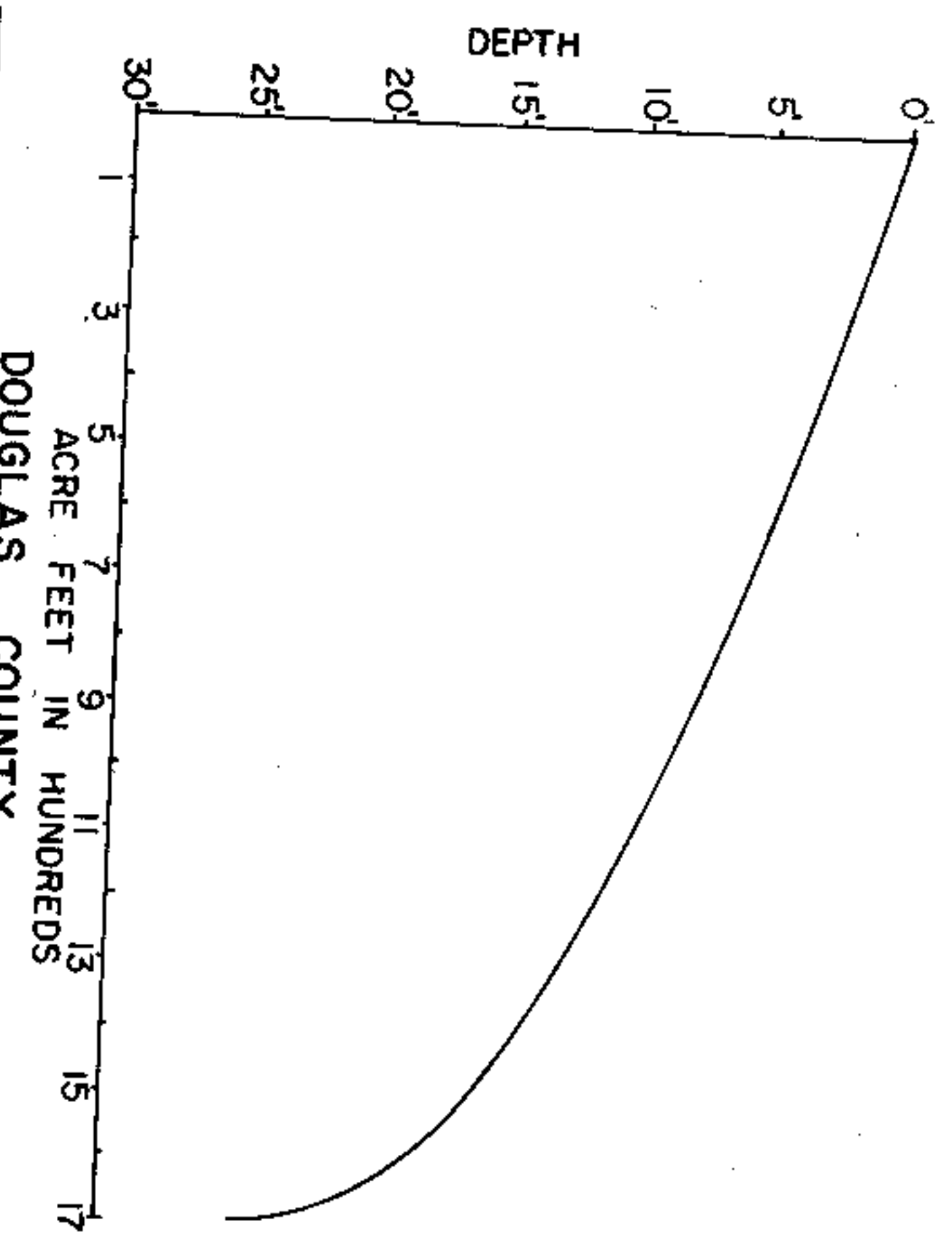


LAKE SURVEY MAP



B.M. 'X' Railroad spike set in the S. side of an 8" Ash tree, first tree S. of boat landing at waters edge. Assumed elevation 100.00' Water level 97.67'

EQUIPMENT RECORDING SONAR MAPPED JULY 1969

- TOPOGRAPHIC SYMBOLS**
- (B) Brush
 - (PW) Partially wooded
 - (W) Wooded
 - (C) Cleared
 - (P) Pastured
 - (A) Agricultural
 - B.M. Bench Mark
 - Dwelling
 - Resort
 - Camp

- LAKE BOTTOM SYMBOLS**
- P. Peat
 - Mk. Muck
 - C. Clay
 - M. Marl
 - Sd. Sand
 - St. Silt
 - Gr. Gravel
 - R. Rubble
 - Br. Bedrock
 - B Boulders
 - Stumps & Snags
 - Rock danger to navigation
 - T Submergent vegetation
 - Emergent vegetation
 - Floating vegetation
 - Brush shelters



Access Access with Parking Boat Livery
 Drawn by: C. Holt
 Field work by: C. Busch, C. Belter, S. Johannes

SPECIES OF FISH	STATUS		
	Uncommon	Common	Present
Muskie			
N. Pike		X	
Walleye		X	X
L.M. Bass		X	
S.M. Bass			
Panfish	X		
Trout			

WATER AREA 135.0 ACRES
 UNDER 3 FT. 9.9 %
 OVER 20 FT. 18.4 %
 MAX. DEPTH 25 FEET.
 TOTAL ALK. 38 P.P.M.
 VOLUME 1695.7 ACRE FT.
 SHORELINE 2.67 MILES
 SHORELINE 3.13 MILES WITH IS.

Source: Wisconsin Department of Natural Resources 608-266-2621
McGraw Lake – Burnett/Douglas Counties, Wisconsin DNR Lake Map
Date – Jul 1969 - Historical Lake Map - Not for Navigation
A Public Document - Please Identify the Source when using it.