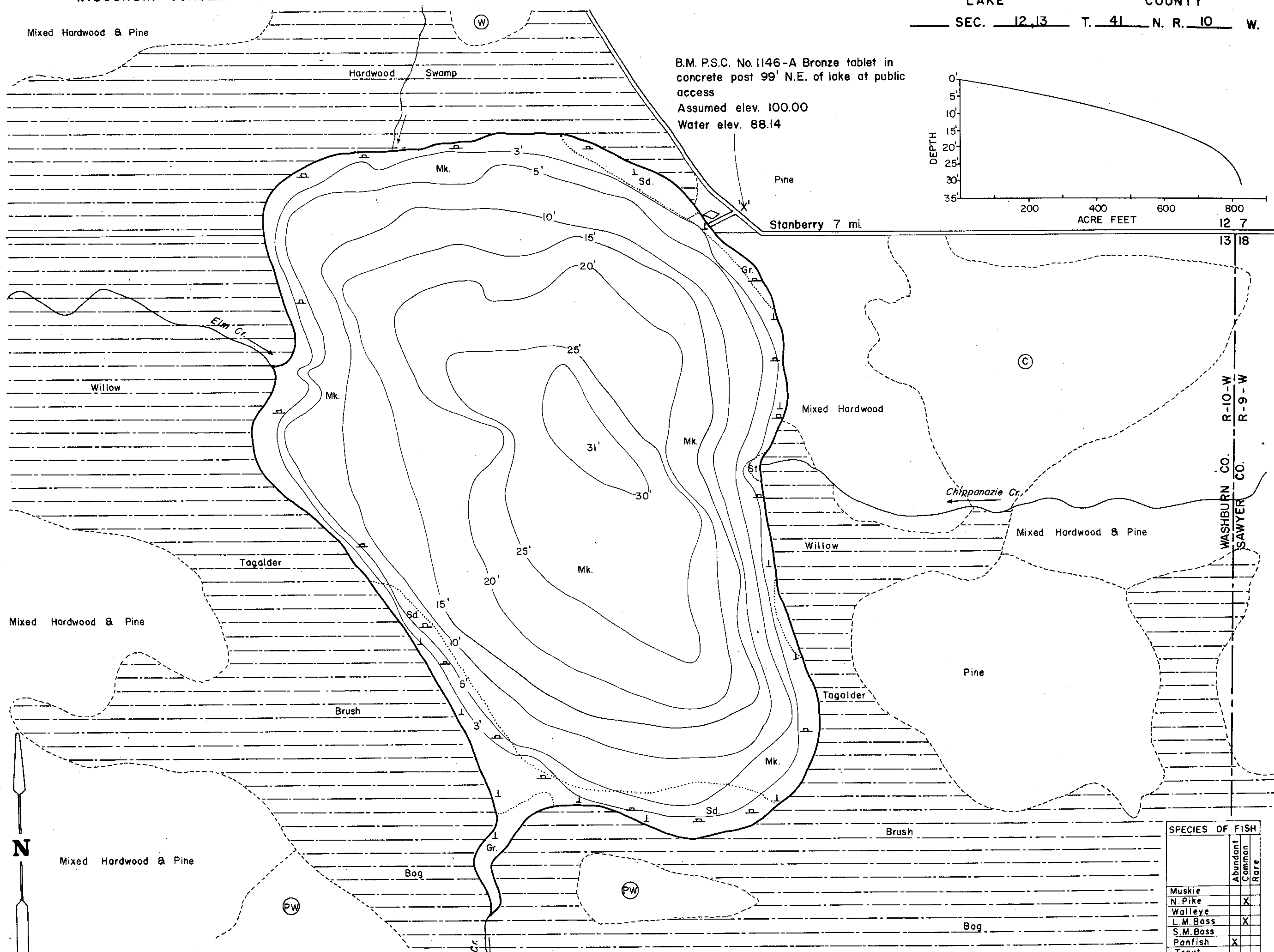
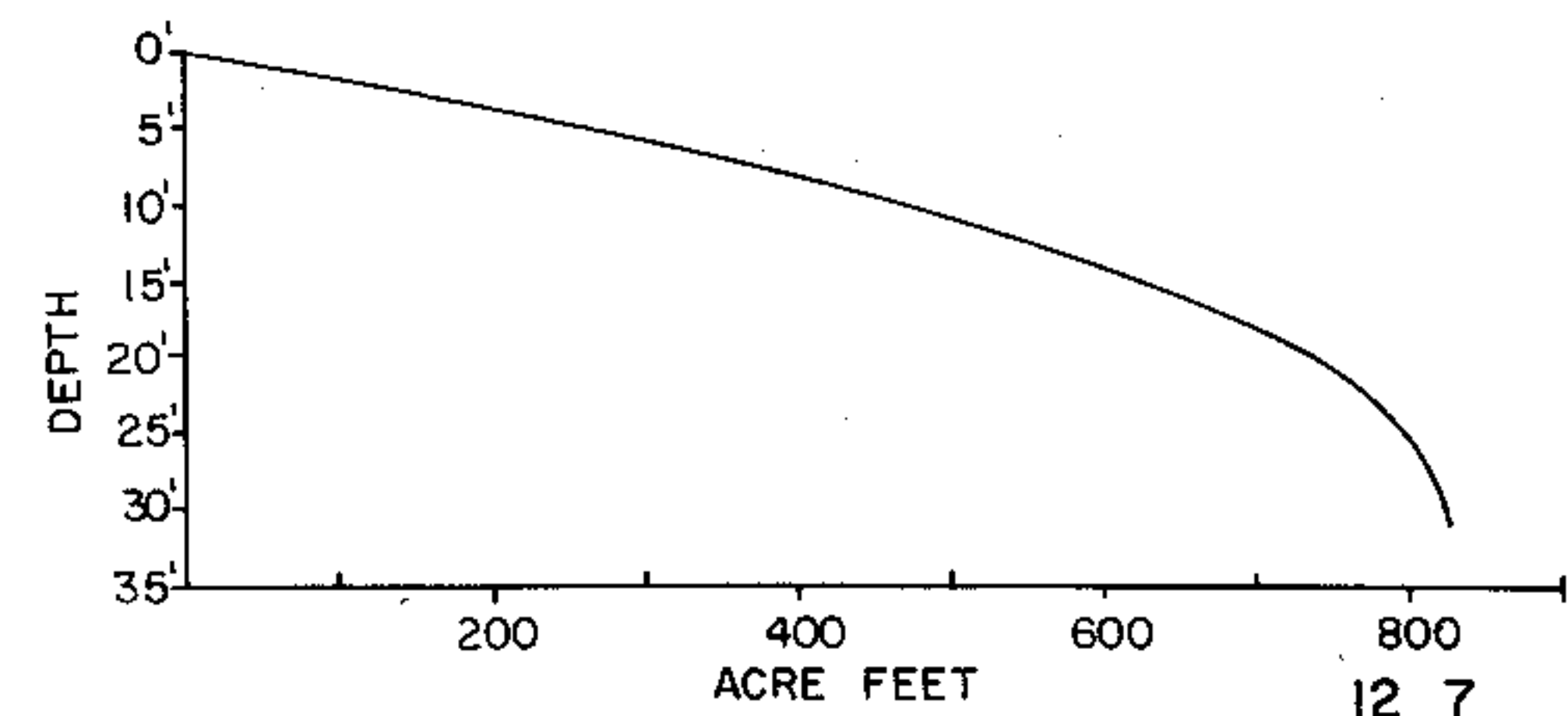


Mixed Hardwood & Pine

B.M. P.S.C. No. 1146-A Bronze tablet in concrete post 99' N.E. of lake at public access
Assumed elev. 100.00
Water elev. 88.14

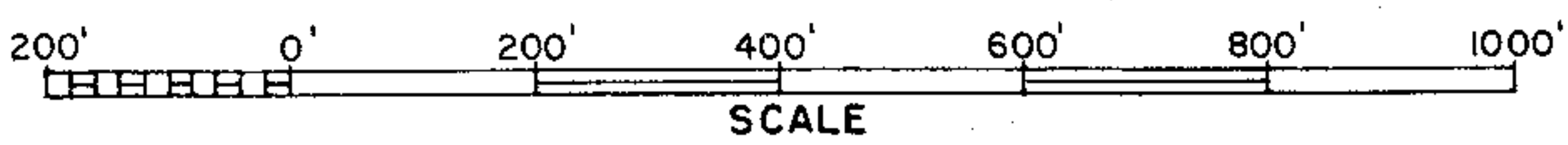


EQUIPMENT RECORDING SONAR MAPPED JUNE 1967
MO. YR.

WATER ELEV. 88.14

- TOPOGRAPHIC SYMBOLS
- (B) Brush
 - (PW) Partially wooded
 - (W) Wooded
 - (C) Cleared
 - (P) Pastured
 - (A) Agricultural
 - B.M. Bench Mark
 - Dwelling
 - Resort
 - ||||| Steep slope
 - - - Indefinite shoreline
 - Marsh
 - o Spring
 - Intermittent stream
 - Permanent inlet
 - Permanent outlet
 - Dam

- LAKE BOTTOM SYMBOLS
- P. Peat
 - Mk. Muck
 - C. Clay
 - M. Marl
 - Sd. Sand
 - St. Silt
 - Gr. Gravel
 - R. Rubble
 - Br. Bedrock
 - T Submergent vegetation
 - Emergent vegetation
 - Floating vegetation
 - Stumps & Snags



◇ Access ◇ Access with Parking ◇ Boat Livery
Field work by C. Busch, G. Winter, L. Sather. Drawn by C. Holt

SPECIES OF FISH		Abundant	Common	Rare
Muskie				
N. Pike			X	
Walleye				
L.M. Bass			X	
S.M. Bass				
Panfish		X		
Trout				

AREA 57.9 ACRES
UNDER 3FT. 12.4 %
OVER 20FT. 31.1 %
VOLUME 824.0 ACRE FT.
TOTAL ALK. 47 P.P.M.
SHORELINE 1.3 MILES
MAX. DEPTH 31 FEET

Source: Wisconsin Department of Natural Resources 608-266-2621
Chippanazie Lake - Washburn County, Wisconsin DNR Lake Map
Date – Jun 1967 - Historical Lake Map - Not for Navigation
A Public Document - Please Identify the Source when using it.