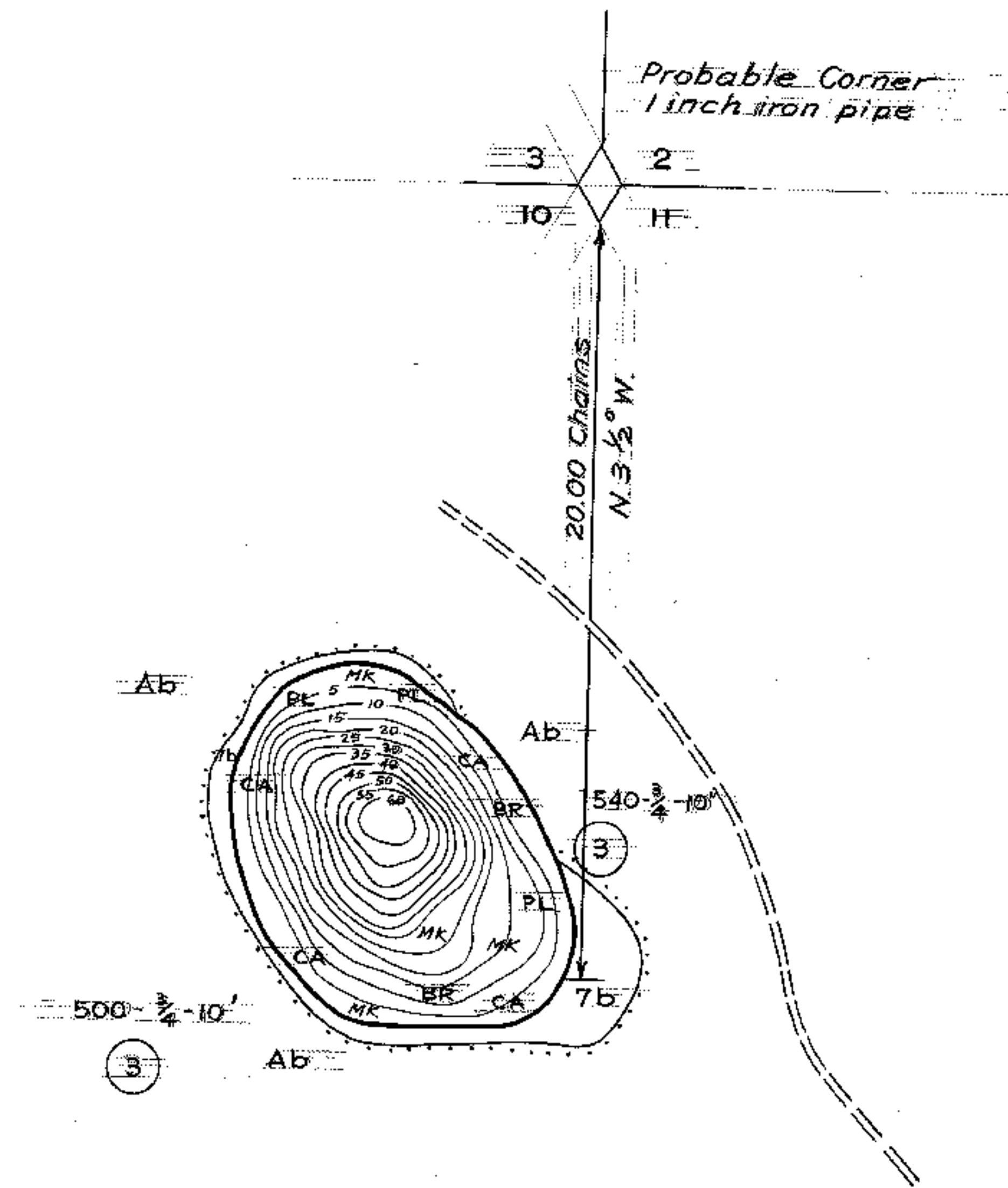


LAKE LITTLE STAR LAKE
 SECTION 10
 TOWNSHIP 45
 RANGE 7 W
 TOWN _____
 COUNTY BAYFIELD



DATE 1937
 SOURCE OF INFORMATION _____
U.S. Department of Agriculture
Forest Service
 SOUNDINGS 5' Intervals

AREA 5.7 Acres
 TOTAL SHORELINE 37 Miles
 MAX. DEPTH 60 Feet
 SCALE: 16" = 1 Mile

Source: Wisconsin Department of Natural Resources 608-266-2621
Little Star Lake – Bayfield County, Wisconsin DNR Lake Map
Date – 1937 - Historical Lake Map - Not for Navigation
A Public Document - Please Identify the Source when using it.