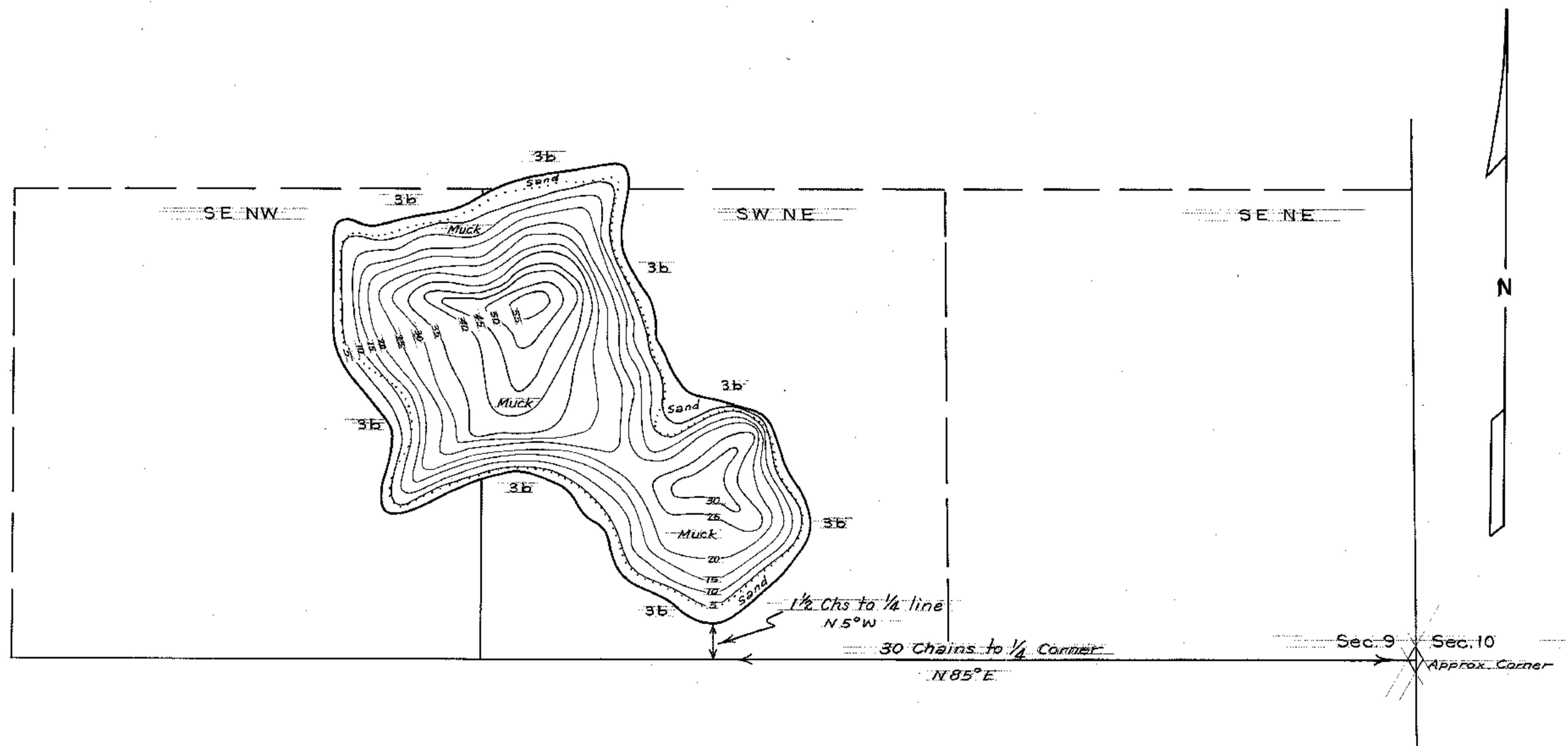


LAKE SILVER LAKE
 SECTION 9
 TOWNSHIP 46 N
 RANGE 8 W
 TOWN _____
 COUNTY BAYFIELD



DATE April 1936
 SOURCE OF INFORMATION U.S. Department of Agriculture
Forest Service
 SOUNDINGS 5' Intervals

AREA 18.6 Acres
 TOTAL SHORELINE 0.9 Miles
 MAX. DEPTH 55 Feet
 SCALE: 16" = 1 Mile

Source: Wisconsin Department of Natural Resources 608-266-2621
Silver Lake – Bayfield County, Wisconsin DNR Lake Map
Date – Apr 1936 - Historical Lake Map - Not for Navigation
A Public Document - Please Identify the Source when using it.