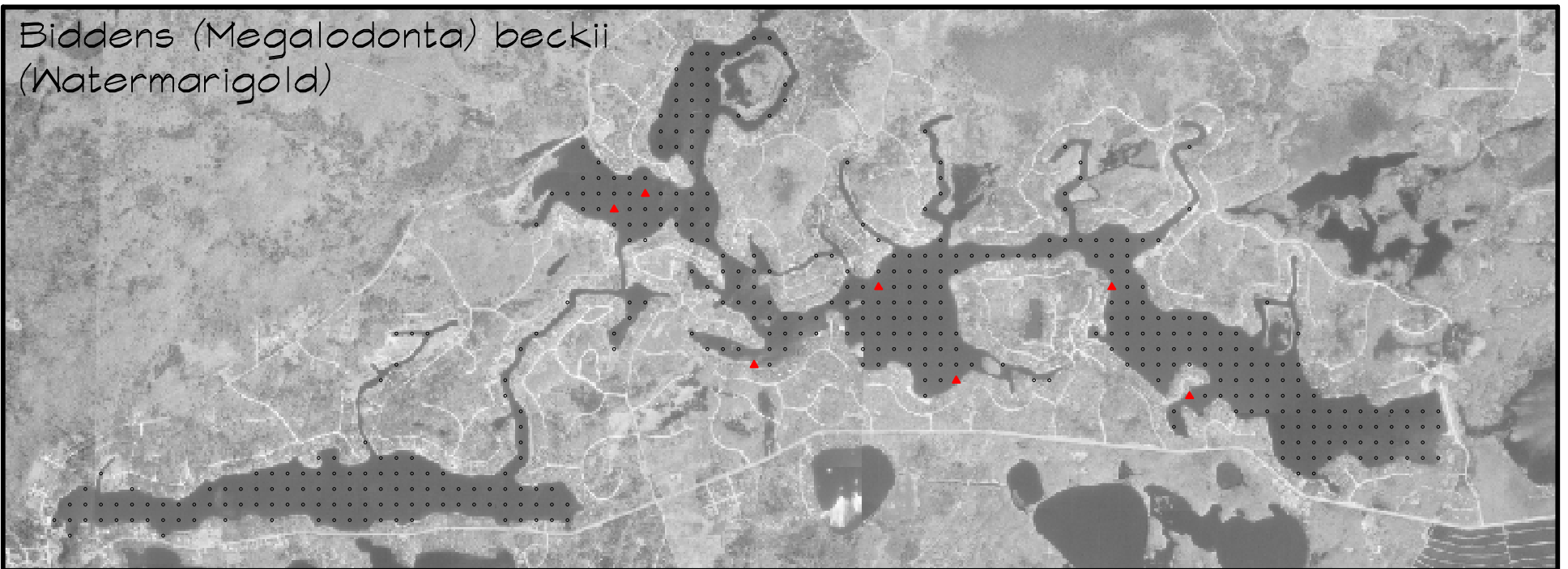
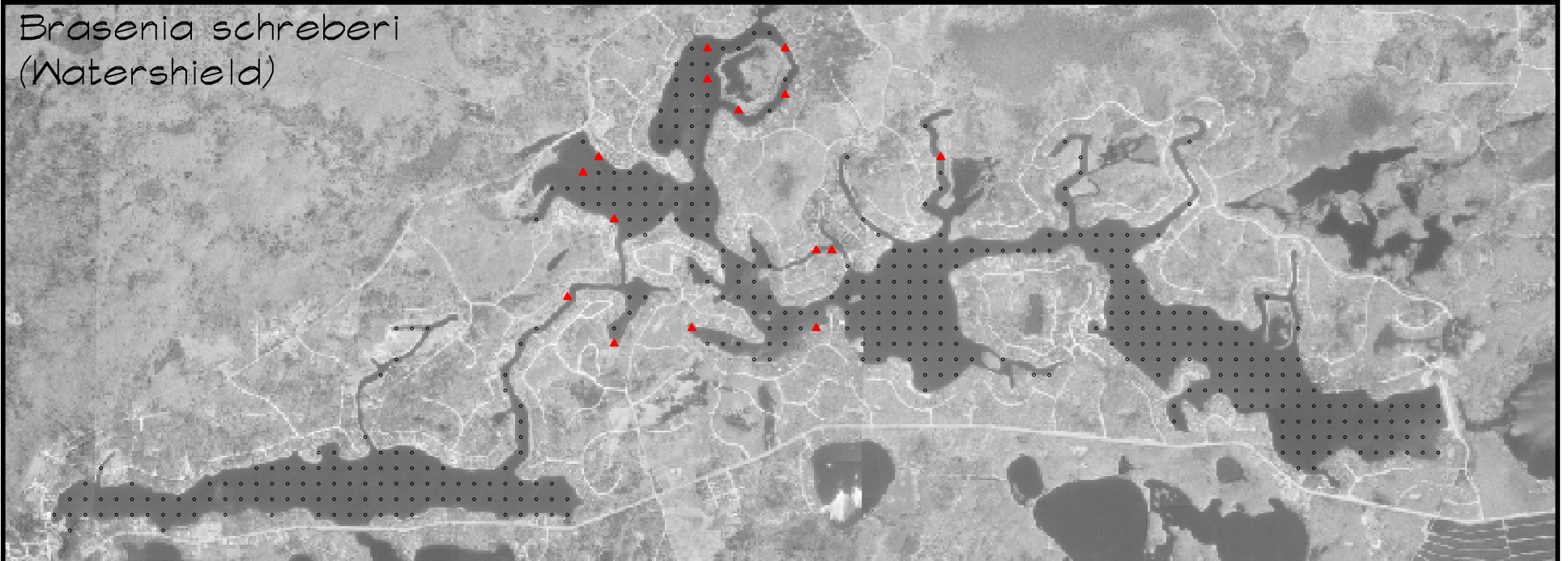


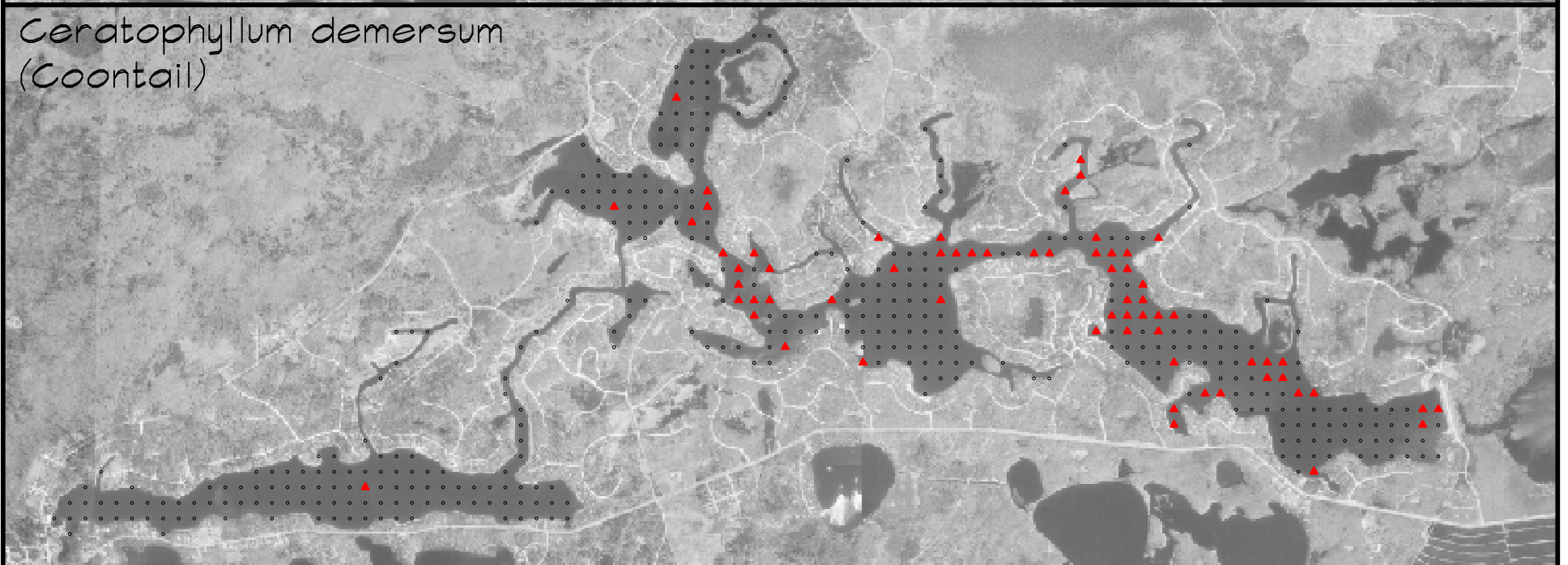
Biddens (Megalodonta) beckii  
(Watermarigold)



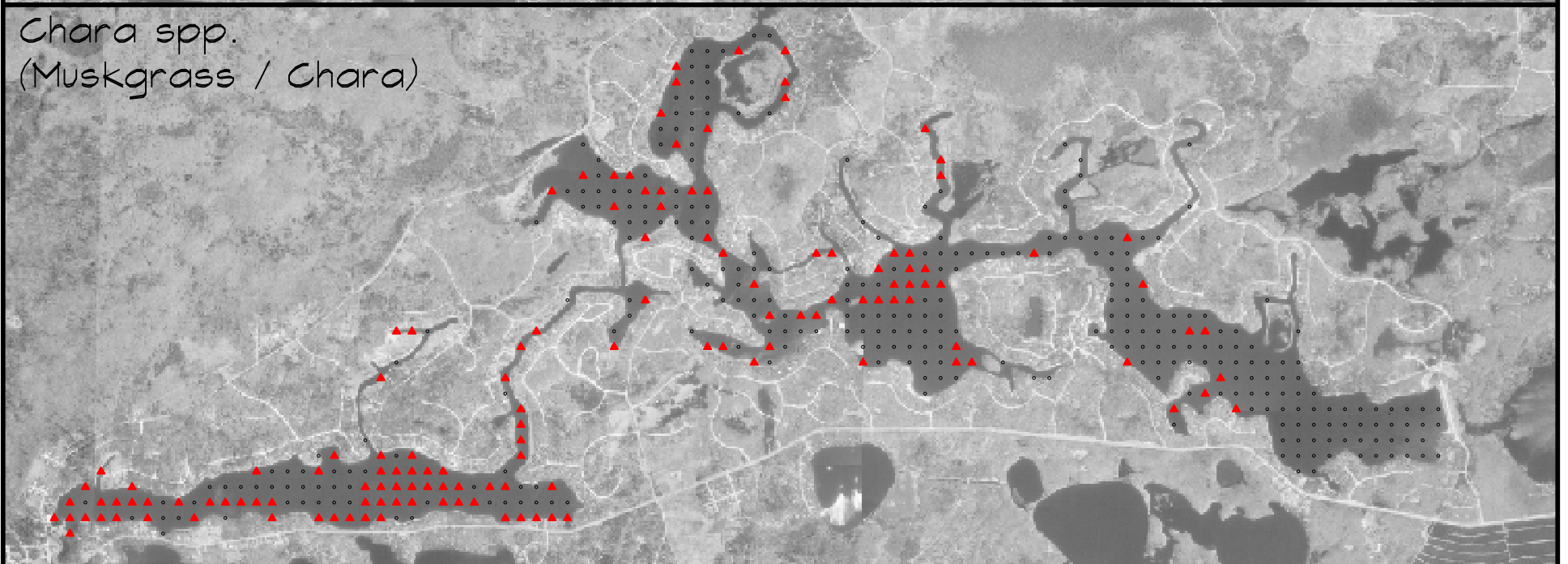
Brasenia schreberi  
(Watershield)



Ceratophyllum demersum  
(Coontail)



Chara spp.  
(Muskgrass / Chara)



- ▲ Present
- Not Present

**Northern Environmental**  
Hydrologists • Engineers • Surveyors • Scientists

1203 Storbeck Drive, Waupun, Wisconsin 53963  
Phone: 800-498-3921 Fax: 920-324-3023

WISCONSIN ▲ MICHIGAN ▲ ILLINOIS ▲ IOWA

This drawing and all information contained thereon is the property of Northern Environmental. Northern Environmental will not be held liable for improper or incorrect usage. Professional seals and signatures do not apply to electronic drawing files. The user assumes all responsibility and risk for the accuracy and verification of all information contained in electronic files.

DATE: 07/11/05

DRAWN BY: EJM

TASK NUMBER: 100

2004 AQUATIC PLANT  
DISTRIBUTION MAP

LEGEND LAKE  
KESHENA, WISCONSIN  
LEGEND LAKE P&R DISTRICT

PROJECT NUMBER: LLD08-5500-0675

FIGURE 7A