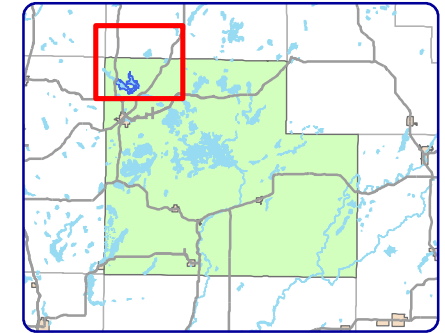


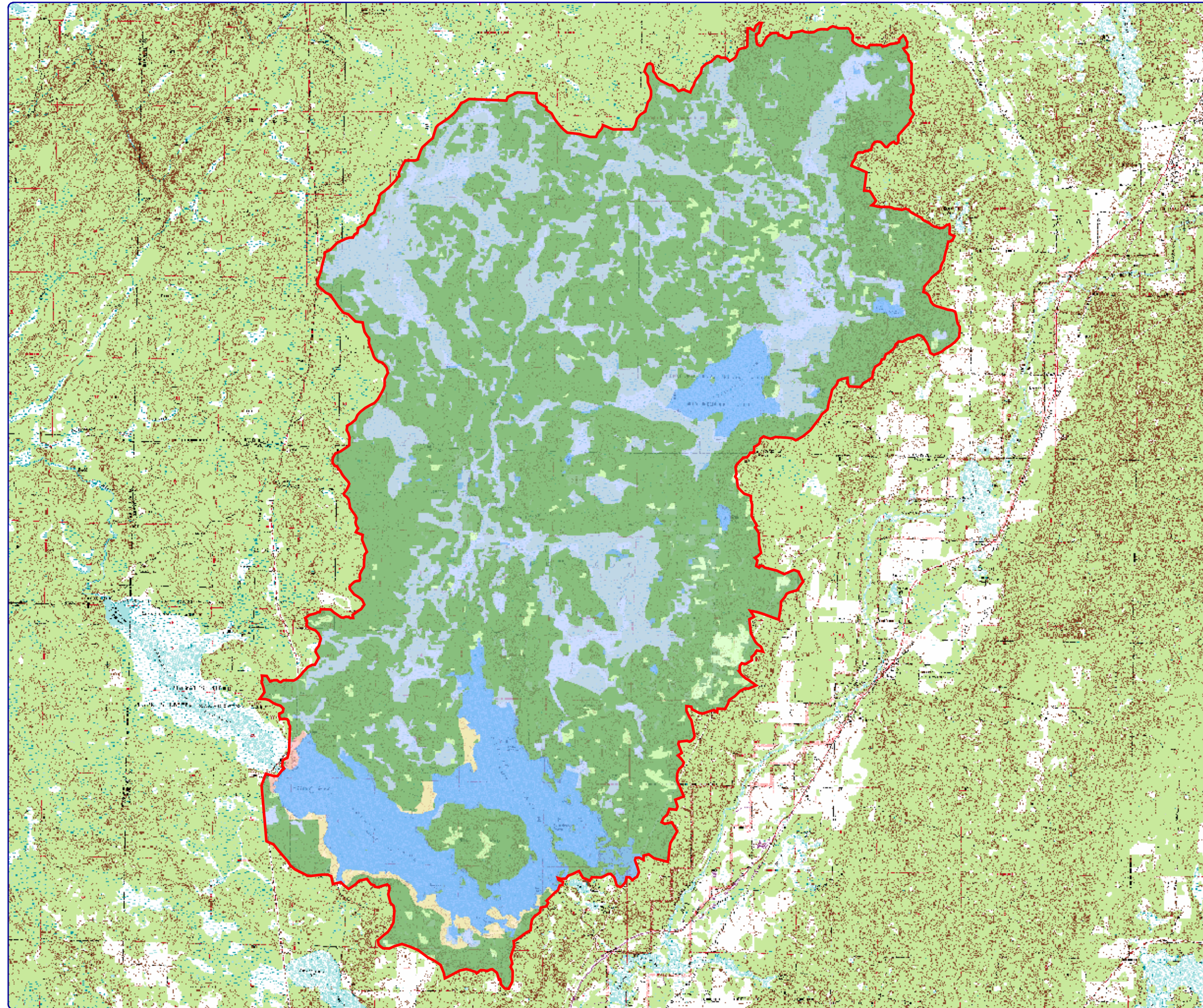
# Map 3 - Draft Nelson Lake

Sawyer County, Wisconsin


## Nelson Lake Watershed Land Cover



Extent of large map shown in red.



### Legend

 Watershed Boundary

### Land Cover Types

 Urban - Medium Intensity

 Rural Residential

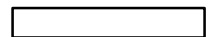
 Pasture/Grass

 Forest

 Open Water

 Wetland

6,200



Feet

Sources:  
Topographical: USGS  
Land Cover: WISCLAND  
Map Date: October 10, 2006

**Onterra LLC** 135 South Broadway Suite C  
Lake Management Planning De Pere, WI 54115  
920.338.8860  
www.onterra-eco.com