
Presque Isle Wilderness Waters Program

Aquatic Plant Management Plan – Stateline Lake

Prepared for:

Presque Isle Town Lakes Committee
Contact: Otto Novak
P.O. Box 37
Presque Isle, Wisconsin 54557

Prepared by:

White Water Associates, Inc.
Dean Premo, Ph.D.
429 River Lane, P.O. Box 27
Amasa, Michigan 49903



Date: March 2014

Presque Isle Wilderness Waters Program

Aquatic Plant Management Plan – Stateline Lake

This plan is a product of a WDNR Aquatic Invasive Species Control Grant (Subchapter II – Education, Prevention, and Planning Projects) awarded to:

Presque Isle Town Lakes Committee
P.O. Box 37
Presque Isle, Wisconsin 54557
Contact: Otto Novak
Phone: (715) 686-2628; E-mail: wefish2@hughes.net

Submitted to:

Wisconsin Department of Natural Resources
Attention: Kevin Gauthier, Sr., Water Resource Management Specialist
8770 Hwy J
Woodruff, WI 54568
Phone: (715) 365-5211 ext. 214; Email: Kevin.GauthierSr@wisconsin.gov

Prepared by:

White Water Associates, Inc.
Dean Premo, Ph.D., Angie Stine, B.S., Caitlin Clarke, B.S., and Kent Premo, M.S.
429 River Lane, P.O. Box 27
Amasa, Michigan 49903
Phone: (906) 822-7889; E-mail: dean.premo@white-water-associates.com

Cite as: Premo, Dean, Angie Stine, Caitlin Clarke and Kent Premo. 2014. Presque Isle Wilderness Waters Program: Stateline Lake Aquatic Plant Management Plan. White Water Associates, Inc.



TABLE OF CONTENTS

Chapter 1. Introduction	1
Chapter 2. Study Area	4
Chapter 3. Purpose and Goal Statements	8
Chapter 4. Information and Analysis	9
Part 1. Watershed	9
Part 2. Aquatic Plant Management History	13
Part 3. Aquatic Plant Community Description	13
Part 4. Fish Community	16
Part 5. Water Quality and Trophic Status	16
Part 6. Water Use	17
Part 7. Riparian Area	17
Part 8. Wildlife	17
Part 9. Stakeholders	18
Chapter 5. Recommendations, Actions, and Objectives	19
Chapter 6. Contingency Plan for AIS	23
Appendix A – Literature Cited	
Appendix B – Tables and Figures	
Appendix C – Review of Lake Water Quality	

CHAPTER 1

Introduction

The *Presque Isle Wilderness Waters Program* results from the efforts of the Presque Isle Town Lakes Committee, an organization that has been active since 2005. The Lakes Committee views stewardship of lakes as an ongoing endeavor that is integrated, coordinated, and administered by the Lakes Committee. This broader perspective accommodates the appropriate range of geographic scales from which to approach lake stewardship: a discrete “lake specific” focus that goes hand-in-hand with waterscape-wide awareness.

This aquatic plant management plan addresses Stateline Lake. Despite this specificity, it maintains the waterscape perspective crucial to effective lake stewardship. This is especially important when it comes to preventing introduction and establishment of aquatic invasive species (AIS). The closely related *Wilderness Waters Adaptive Management Plan* (Premo et al., 2014) provides additional overarching waterscape level examination that allows greater opportunity and efficiency in water resource management and education.

A systematic survey of aquatic plants using the Wisconsin Department of Natural Resources (WDNR) “point-intercept” method was an important underpinning of this aquatic plant management plan. An analysis of the plant data along with water quality and other lake information allowed the preparation of the plan.

Aquatic plants rarely get the respect they merit, although this is slowly changing. We still call an aquatic plant bed a “weed bed.” Many aquatic plants have “weed” in their names (e.g., duckweed, pondweed, or musky weed). Likely this term was borrowed from “seaweed” and not intended as derogatory, but in today’s use, “weed” connotes an unwanted, aggressively growing plant. Such is not the case for the vast majority of aquatic plants. In fact, aquatic plants are a vital part of a lake ecosystem, recycling nutrients, providing vertical and horizontal structure, and creating habitat for animal life. Invertebrates, including crustaceans and insects, live on or within this “aquatic forest.” Fish find food and shelter within aquatic plant beds. Waterfowl eat parts of plants directly as well as feed on invertebrates associated with the plants. Muskrats eat aquatic plants and particularly love cattails and bulrushes. Otter and mink hunt invertebrates and small vertebrates within the shelter of submergent and emergent beds. In shallow water, great blue herons find fishes among the plants.

In lakes that receive an excess of nutrients (particularly from fertilizers or leaking septic tanks), plant growth can become too lush or dominated by only a few species. As these abundant plants die, their decomposition can depress dissolved oxygen levels and diminish suitability for fish. Algae can respond rapidly to nutrient influxes and create nuisance conditions. These phenomena can cause humans to view all aquatic plants in a negative light.

On another negative front, non-native plant species, transported on boats and trailers or dumped from home aquariums, private ponds and water gardens may come to dominate a water body to the exclusion of a healthy diversity of native species. Eurasian water-milfoil (*Myriophyllum spicatum*) is one of the better known examples of these so-called aquatic invasive plant species.

For most lakes, native aquatic plants are an overwhelmingly positive attribute, greatly enhancing the aesthetics of the lake and providing good opportunities for fishing, boating, swimming, snorkeling, sight-seeing, and hunting.

When it comes to aquatic plant management, it is useful to heed the mantra of the medical profession: “First, do no harm.” It is both a social and scientific convention that aquatic plant management is more effective and beneficial when a lake is considered as an entire and integrated ecosystem. Anyone involved in aquatic plant management should be aware that a permit may be required to remove, add, or control aquatic plants. In addition, anyone using Wisconsin’s lakes must comply with the “Boat Launch Law” that addresses transport of aquatic plants on boat trailers and other equipment. A good review of the laws, permits, and regulations that affect management and behavior surrounding aquatic plants can be found in the WDNR guidelines called *Aquatic Plant Management in Wisconsin*.¹

In preparing this plan, we followed guidelines in *Aquatic Plant Management in Wisconsin*. The resulting plan is an adaptive plan (Walters 1986). Simply put, it will be modified as new information becomes available. The WDNR Guidance document outlines three objectives that may influence preparation of an aquatic plant management plan:

- **Protection** - preventing the introduction of nuisance or invasive species into waters where these plants are not currently present;
- **Maintenance** - continuing the patterns of recreational use that have developed historically on and around a lake; and

¹ <http://www4.uwsp.edu/cnr/uwexlakes/ecology/APM/APMguideFull2010.pdf>

-
- **Rehabilitation** - controlling an imbalance in the aquatic plant community leading to the dominance of a few plant species, frequently associated with the introduction of invasive non-native species.

Currently, the motivation for this plan lies in the first two objectives. Stateline Lake is a tremendous resource with good water quality and a diverse and interesting community of aquatic plants. It also has a recreational history and current human use that has caused only moderate degradation to the ecosystem.

During projects with the WDNR Planning Grant Program and through past efforts, Town Lakes Committee has followed the first five steps in the seven-step plan outlined in the Guidance Document for developing an aquatic plant management plan:

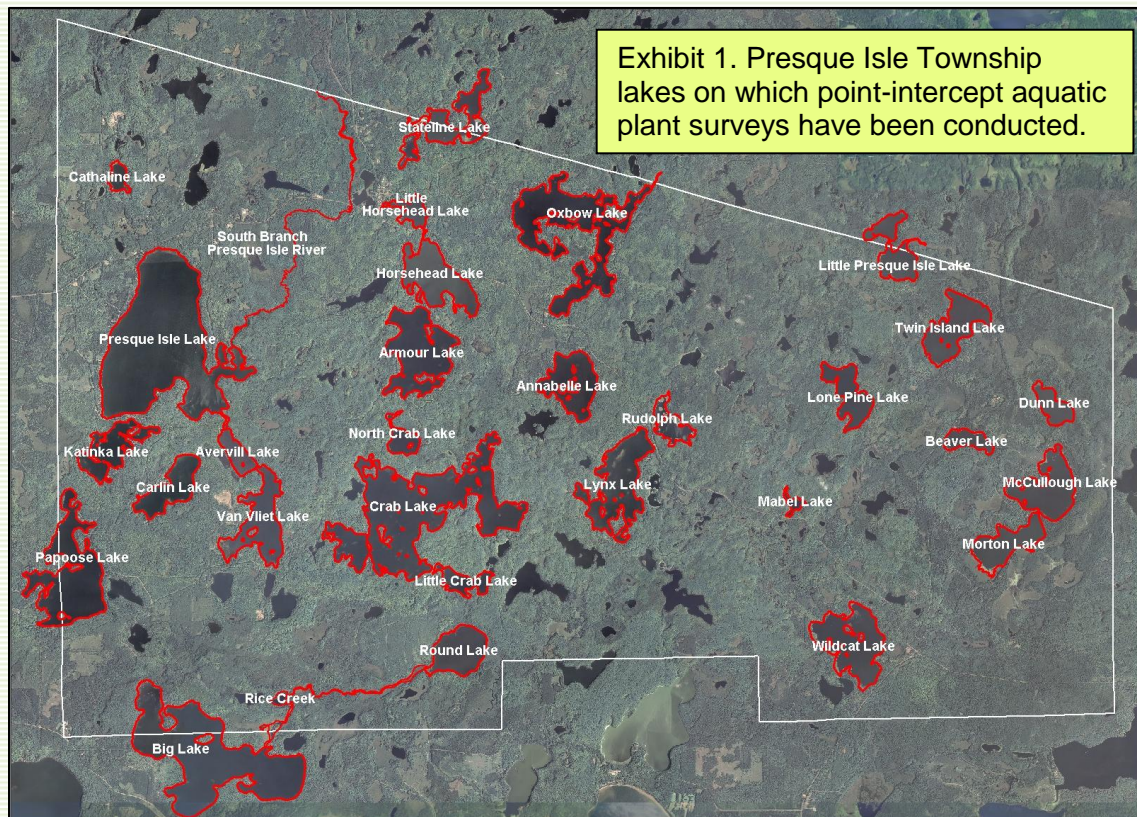
1. Goal setting – Getting the effort organized, identifying problems to be addressed, and agreeing on the goals;
2. Inventory – Collecting baseline information to define the past and existing conditions;
3. Analysis – Synthesizing the information, quantifying and comparing the current conditions to desired conditions, researching opportunities and constraints, and setting directions to achieving the goals;
4. Alternatives – Listing possible management alternatives and evaluating their strengths, weaknesses and general feasibility;
5. Recommendations – Prioritizing and selecting preferred management options, setting objectives, drafting the plan;
6. Implementation – Formally adopting the plan, lining up funding, and scheduling activities for taking action to achieve the goals;
7. Monitor & Modify – Developing a mechanism for tracking activities and adjusting the plan as it evolves.

Besides this introductory chapter, this plan is organized in six Chapters. The study area is described in Chapter 2. Chapter 3 states the purpose and goals for the plan. Chapter 4 presents an inventory and analysis of information that pertain to the plan including the results of the aquatic plant survey. Chapter 5 provides recommendations that support the overall goals and establish the stewardship component of plan. Finally, Chapter 6 presents actions and objectives for implementing the plan. Three appendices complete this document. Appendix A contains literature cited, Appendix B contains tables and figures for the aquatic plant survey, and Appendix C contains a *Review of Stateline Lake Water Quality*.

CHAPTER 2

Study Area

Presque Isle Township is one of the northern-most townships in Vilas County, Wisconsin. Presque Isle Township's northern border is shared with the State of Michigan. In fact some of the Presque Township lakes lie on the state border. The location of the subject of this APM Plan (Stateline Lake) is shown in Exhibit 1 along with other lakes in Presque Isle Township that have had point-intercept aquatic plant surveys conducted. Exhibit 2 is an aerial view of Stateline Lake.



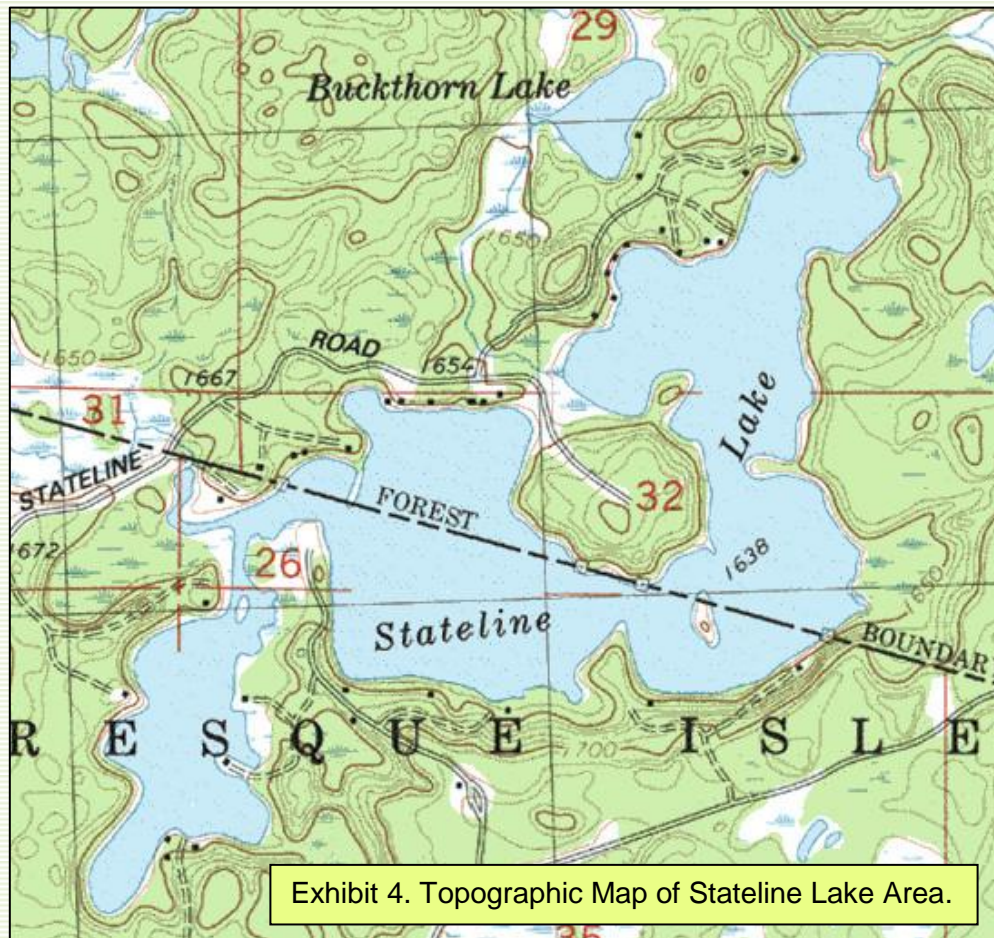
“Almost an island” is the literal translation of the French phrase “Presque Isle.” Early French missionaries, perhaps disoriented by the preponderance of water in this north central Wisconsin landscape applied the name, “Presque Isle” to describe an area where the water seemed to dominate the land. The French visitors and Native Americans certainly recognized this landscape as special. Modern ecologists and recreationist share this view. The region that includes the Township of Presque Isle, Wisconsin is an ecological landscape marvelously rich in surface waters. Aerial photography reveals a concentration of lakes and streams that is unique in North America. Presque Isle Township has eighty-four lakes. The Presque Isle area could as easily be termed a “waterscape” as a “landscape.”



Descriptive parameters for Stateline Lake are in Exhibit 3. It is a spring lake of about 205 acres and maximum depth of 67 feet. It has a high shoreline development index. The shoreline development index is a quantitative expression derived from the shape of the lake. It is defined as the ratio of the shoreline length to the length of the circumference of a circle of the same area as the lake. A perfectly round lake would have an index of 1. Increasing irregularity of shoreline development in the form of bays and projections of the shore is shown by numbers greater than 1. For example, fjord lakes with extremely irregularly shaped shorelines sometimes have SDIs exceeding 5. A higher shoreline development index indicates that a lake has relatively more productive littoral zone habitat. Of the 12 lakes considered in the Wilderness Waters Program, the shoreline development index ranged from 1.2 to 3.2 (median value = 1.9).

Exhibit 3. Water Body Parameters	
Water Body Name	Stateline
County	Vilas
Township/Range/Section	T44N-R06E-S26,S34,S35
Water Body Identification Code	2952100
Lake Type	Spring
Surface Area (acres)	205
Maximum Depth (feet)	67
Maximum Length (miles)	0.4
Maximum Width (miles)	0.3
Shoreline Length (miles)	6.43
Shoreline Development Index	3.2
Total Number of Piers (2011 aerial)	73
Number of Piers / Mile of Shoreline	11.4
Total Number of Homes (2011 aerial)	55
Number of Homes / Mile of Shoreline	8.6

Stateline Lake has no public access site on the Wisconsin side of the lake. We observe a total of 73 piers on the shoreline of Stateline Lake from a 2011 aerial photograph or about 11.4 piers per mile of shoreline. The riparian area consists of both upland and wetland areas (Exhibit 4).



CHAPTER 3

Purpose and Goal Statements

This plan approaches aquatic plant management with a healthy dose of humility. We do not always understand the causes of environmental phenomena or the effects of our actions to manage the environment. With that thought in mind, we have crafted a statement of purpose and for this plan:

Stateline Lake has a healthy and diverse aquatic plant community that was documented by a point-intercept aquatic plant survey. This plant community is essential to, and part of, a high quality aquatic ecosystem that benefits the human community with its recreational and aesthetic features. The purpose of this aquatic plant management plan is to maintain the aquatic plant community in its present high quality state.

Supporting this purpose, the goals of this aquatic plant management plan are:

- (1) Monitor and protect the native aquatic plant community;*
- (2) Prevent establishment of AIS and nuisance levels of native plants;*
- (3) Promote and interpret APM efforts; and*
- (4) Educate riparian owners and lake users on preventing AIS introduction, reducing nutrient inputs that potentially alter the plant community, and minimizing physical removal of native riparian and littoral zone plants.*

The purpose and goals are the foundation for the aquatic plant management plan presented in this document. They inform the objectives and actions outlined in Chapter 5 and are the principal motivation of Stateline Lake stewards.

CHAPTER 4

Information and Analysis

Our efforts in the Wilderness Waters Program have compiled information about historical and current conditions of the Stateline Lake ecosystem and its surrounding watershed. Of particular importance to this aquatic plant management plan is the aquatic plant survey that was conducted in using the *WDNR Protocol for Aquatic Plant Survey, Collecting, Mapping, Preserving, and Data Entry* (Hauxwell et al., 2010). The results of this comprehensive “point-intercept” survey along with relevant components of other information are presented in this chapter under nine respective subheadings: watershed, aquatic plant management history, aquatic plant community description, fish community, water quality and trophic status, water use, riparian area, wildlife, and stakeholders.

Part 1. Watershed

The Presque Isle Township waterscape sits on a large-scale watershed divide. Some of the water drains north through the Presque Isle River system and eventually enters Lake Superior. Some of the water drains into the Wisconsin River system to the Mississippi River and to the Gulf of Mexico. In fact there are two federal hydrologic sub-basins (designated by 8-digit HUC codes) that include Presque Isle Township. The Black-Presque Isle Rivers sub-basin (HUC#04020101) drains north to Lake Superior and the Flambeau River sub-basin (HUC#0705002) drains southwesterly to the Mississippi River. The Black-Presque Isle Rivers sub-basin contains two federal hydrologic sub-watersheds within Presque Isle Township: the South Branch Presque Isle River sub-watershed (HUC#040201010303) and the Pomeroy Creek-East Branch Presque Isle River sub-watershed (HUC#040201010301). The Flambeau River sub-basin contains one sub-watershed within Presque Isle Township: the Rice Creek sub-watershed (HUC#07050020103). Exhibit 5 illustrates these watersheds and the watersheds of the water bodies subject to the Wilderness Waters Program studies. Stateline Lake is contained within the South Branch Presque Isle River sub-watershed (Exhibit 5).

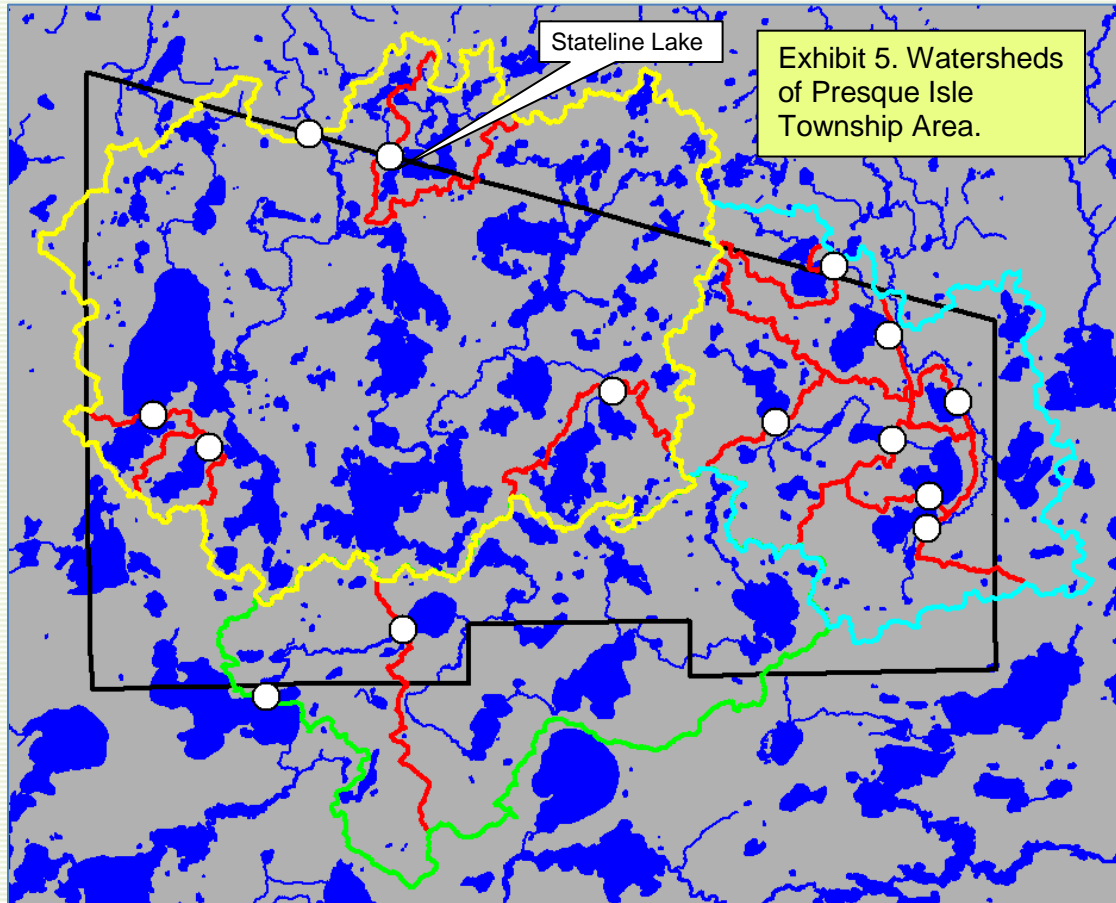
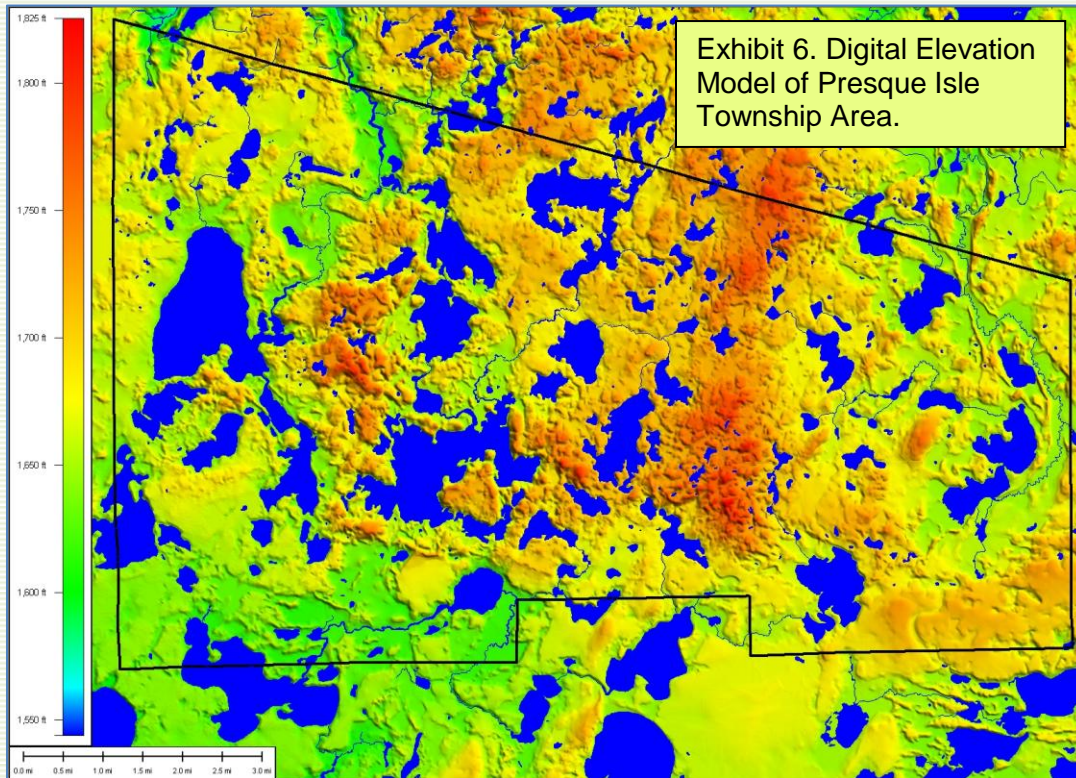


Exhibit 5. Watersheds of Presque Isle Township Area.

Description: Portions of 3 federal hydrologic sub-watersheds are illustrated: (1) S.Br. Presque Isle River (bounded by yellow), (2) Pomeroy Cr-E.Br. Presque Isle River (bounded by blue and yellow), and (3) Rice Cr. (bounded by green, yellow, and blue). Also shown are the smaller watersheds of individual water bodies subject to the Wilderness Waters studies (bounded by red). White dots show outlet points for the smaller watersheds.

The elevation in Presque Isle Township ranges from around 1,550 feet above sea level to 1,750 feet above sea level. A digital elevation model is provided as Exhibit 6 and shows the relative elevations for the area with orange areas of the landscape being the highest elevations and greens and blues being the lowest elevations.



The watershed (drainage basin) is all of the land and water areas that drain toward a particular river or lake. A water body is greatly influenced by its watershed. Watershed size, topography, geology, land use, soil fertility and erodibility, and vegetation are all factors that influence water quality. The Stateline Lake watershed is about 1420.2 acres. It is identified in Exhibit 5 and bounded by the red and yellow lines. The cover types in the watershed are presented in Exhibit 7. Forest and surface water comprise the largest components. All soil groups (A, B, C and D) are present. Soil group B makes up almost 70% of the watershed whereas group D makes up 30%. Infiltration rates rank from highest to lowest, with A having the highest and D having the lowest. The watershed to lake area ratio is 7:1. Water quality often decreases with an increasing ratio of watershed area to lake area. As the watershed to lake area increases there are more sources and amounts of runoff. In larger watersheds, runoff water can leach more minerals and nutrients and carry them to the lake. The runoff to a lake (such as after a rainstorm or snowmelt) differs greatly among land uses. Forest cover is the most protective as it

exports much less soil (through erosion) and nutrients (such as phosphorus and nitrogen) to the lake than agricultural or urban land use.

Exhibit 7. Cover Types and Soil Groups of the Stateline Lake Watershed.			
Cover Type		Acres	Percent
Agriculture		1.9	0.1
Commercial		0	0
Forest		866.9	61
Grass/Pasture		0	0
High-density Residential		2.4	0.2
Low-density Residential		63.3	4.5
Water		485.7	34.2
Total		1420.2	100.0
Soil Group	Acres	Percent	Hydrologic Soil Groups - Soils are classified by the Natural Resource Conservation Service into four Hydrologic Soil Groups* based on the soil's runoff potential. The four Hydrologic Soils Groups are A, B, C and D. Where A has the smallest runoff potential and D the greatest.
A	6.7	0.5	Group A is sand, loamy sand or sandy loam types of soils. It has low runoff potential and high infiltration rates even when thoroughly wetted. They consist chiefly of deep, well to excessively drained sands or gravels and have a high rate of water transmission.
B	979.6	69	Group B is silt loam or loam. It has a moderate infiltration rate when thoroughly wetted and consists chiefly or moderately deep to deep, moderately well to well drained soils with moderately fine to moderately coarse textures.
C	8.3	0.6	Group C soils are sandy clay loam. They have low infiltration rates when thoroughly wetted and consist chiefly of soils with a layer that impedes downward movement of water and soils with moderately fine to fine structure.
D	425.6	30	Group D soils are clay loam, silty clay loam, sandy clay, silty clay or clay. This soil has the highest runoff potential. They have very low infiltration rates when thoroughly wetted and consist chiefly of clay soils with a high swelling potential, soils with a permanent high water table, soils with a claypan or clay layer at or near the surface and shallow soils over nearly impervious material.

*(USDA, Natural Resources Conservation Service, 1986)

Part 2. Aquatic Plant Management History

As far as we can determine, no systematic or large-scale plant management activity has ever taken place in Stateline Lake. Over the years, no particular nuisance issues have demanded control action. It is our understanding that the plant survey conducted as part of the 2010/2011 Wilderness Water Program was the first effort of its kind on this water body.

Part 3. Aquatic Plant Community Description

Why do lakes need aquatic plants? In many ways, they are underwater forests. Aquatic plants provide vertical and horizontal structure in the lake just like the many forms and variety of trees do in a forest. Imagine how diminished a forest's biodiversity becomes in the advent of a clear-cut. Similarly, a lake's biodiversity in large part depends on a diversity of plants.

Aquatic plants are beneficial in many ways. Areas with plants produce more food for fish (insect larvae, snails, and other invertebrates). Aquatic vegetation offers fish shelter and spawning habitat. Many submerged plants provide food for waterfowl and habitat for insects on which some waterfowl feed. Aquatic plants further benefit lakes by producing oxygen and absorbing nutrients (phosphorus and nitrogen) from runoff. Aquatic plants also protect shorelines and lake bottoms by dampening wave action and stabilizing sediments.

The distribution of plants within a lake is generally limited by light availability, which is, in turn, controlled by water clarity. Aquatic biologists often estimate the depth to which rooted aquatic plants can exist as about two times the average Secchi clarity depth. For example, if the average Secchi depth is eight feet then it is fairly accurate to estimate that rooted plants might exist in water as deep as sixteen feet. At depths greater than that (in our hypothetical example), light is insufficient for rooted plants to grow. In addition to available light, the type of substrate influences the distribution of rooted aquatic plants. Plants are more likely to be found in muddy or soft sediments containing organic matter, and less likely to occur where the substrate is sand, gravel, or rock. Finally, water chemistry influences which plants are found in a body of water. Some species prefer alkaline lakes and some prefer more acidic lakes. The presence of nutrients like phosphorous and nitrogen also influence plant community composition.

As mentioned earlier, non-native invasive plant species can reach high densities and wide distribution within a lake. This diminishes the native plant community and the related habitat. At times, even a native plant species can reach nuisance levels with respect to certain kinds of human recreation. These cases may warrant some kind of plant management.

We conducted a WDNR point-intercept aquatic plant survey on Stateline Lake in summer 2010. This formal survey assessed the plant species composition on a grid of several hundred points distributed evenly over the lake. Using latitude-longitude coordinates and a handheld GPS unit, we navigated to the points and used a rake mounted on a pole or rope to sample plants. These were identified, recorded, and put into a dedicated spreadsheet for storage and data analysis. This systematic survey provides baseline data about the lake. Future monitoring will be able to identify and track changes in the plant community. Changes in a lake environment might manifest as loss of species, change in species abundance or distribution, difference in the relative composition of various plant life forms (emergent, floating leaf, or submergent plants), and/or appearance of an AIS or change in its population size. Monitoring can track changes and provide valuable insight on which to base management decisions. In the remainder of this section (Part 3) we report the findings of the point-intercept aquatic plant survey. The supporting tables and figures for the aquatic plant survey are provided in Appendix B.

Species richness refers to the total number of species recorded. We recorded 34 species of aquatic plants. Of these, 32 were collected at sampling sites and the others were observed from the boat. Table 1 displays summary statistics for the survey. Table 2 provides a list of the species encountered, including common and scientific name along with summarizing statistics.² The number of species encountered at any given sample point ranged from 0 to 9 and 294 sample points were found to have aquatic vegetation present. The average number of species encountered at these vegetated sites was 3.27. The actual number of species encountered at each of the vegetated sites is graphically displayed on Figure 1. Plant density is estimated by a “rake fullness” metric (3 being the highest possible density). These densities (considering all species) are displayed for each sampling site on Figure 2.

The maximum depth of plant colonization is 15 feet (Table 1 and Figure 3). Rooted vegetation was found at 294 of the 500 sample sites with depth \leq the maximum depth of plant colonization (59% of sites). These sites are displayed as a black dot within a circle on Figure 4. This indicates that although availability of appropriate depth may limit the distribution of plants, it is not the only habitat factor involved. Substrate is another feature that influences plant distribution (e.g., soft substrate often harbors more plants than hard substrate). Figure 5 presents the substrates encountered during the aquatic plant survey (mud, sand, or rock).

² *If you are interested in learning more about the plant species found in the lake, visit the University of Wisconsin Steven Point Freckmann Herbarium website at: <http://wisplants.uwsp.edu/> or obtain a copy of “Through the Looking Glass (A Field Guide to the Aquatic Plants in Wisconsin).”*

Table 2 provides information about the frequency of occurrence of the plant species recorded in the lake. Several metrics are provided, including total number of sites in which each species was found and frequency of occurrence at sites \leq the maximum depth of rooted vegetation. This frequency metric is standardized as a “relative frequency” (also shown in Table 2) by dividing the frequency of occurrence for a given species by the sum of frequency of occurrence for all plants and multiplying by 100 to form a percentage. The resulting relative frequencies for all species total 100%. The relative frequencies for the plant species collected with a rake are graphically displayed in descending order on Figure 6. This display shows that *Potamogeton robbinsii* (Fern pondweed) had the highest relative frequency followed by *Ceratophyllum demersum* (Coontail). The lowest relative frequencies are at the far right of the graph. As examples of individual species distributions, we show the occurrences of a few of the most frequently and least frequently encountered plants in Figures 7-14.

Species richness (total number of plants recorded at the lake) is a measure of species diversity, but it doesn’t tell the whole story. As an example, consider the plant communities of two hypothetical ponds each with 1,000 individual plants representing ten plant species (in other words, richness is 10). In the first pond each of the ten species populations is comprised of 100 individuals. In the second pond, Species #1 has a population of 991 individuals and each of the other nine species is represented by one individual plant. Intuitively, we would say that first pond is more diverse because there is more “even” distribution of individual species. The “Simpson Diversity Index” takes into account both richness and evenness in estimating diversity. It is based on a plant’s relative frequency in a lake. The closer the Simpson Diversity Index is to 1, the more diverse the plant community. The Simpson Diversity Index for Stateline Lake aquatic plants is 0.89 (Table 1) which indicates a diverse aquatic plant community.

Another measure of floristic diversity and quality is the *Floristic Quality Index* (FQI). Floristic quality is an assessment metric designed to evaluate the closeness that the flora of an area is to that of undisturbed conditions (Nichols 1999). Among other applications, it forms a standardized metric that can be used to compare the quality of different lakes (or different locations within a single lake) and monitor long-term changes in a lake’s plant community (an indicator of lake health). The FQI for a lake is determined by using the average *coefficient of conservatism* times the square root of the number of native plant species present in the lake. Knowledgeable botanists have assigned to each native aquatic plant a *coefficient of conservatism* representing the probability that a plant is likely to occur in pristine environments (relatively unaltered from presettlement conditions). The coefficients range from 0 to 10, with 10 being

assigned to those species most sensitive to disturbance. As more environmental disturbance occurs, the less conservative species become more prevalent.

Nichols (1999) analyzed aquatic plant community data from 554 Wisconsin Lakes to ascertain geographic (ecoregional) characteristics of the FQI metric. This is useful for considering how the Stateline Lake FQI (35.1) compares to other lakes and regions. The statewide medians for number of species and FQI are 13 and 22.2, respectively. Stateline Lake values are higher than statewide values. Nichols (1999) determined that there are four ecoregional-lake types groups in Wisconsin: (1) Northern Lakes and Forests lakes, (2) Northern Lakes and Forests flowages, (3) North Central Hardwoods and Southeastern Till Plain lakes and flowages, and (4) Driftless Area and Mississippi River Backwater lakes. Stateline Lake is located in the Northern Lakes and Forests lakes group. Nichols (1999) found species numbers for the Northern Lakes and Forests lakes group had a median value of 13. Stateline Lake data is consistent with that find. Finally, the Stateline Lake FQI (35.1) is much higher than the median value for the Northern Lakes and Forests lakes group (24.3). These findings support the contention that the Stateline Lake plant community is healthy and diverse.

We observed no aquatic plants in Stateline Lake that would be considered a nuisance-level population density/distribution. Our survey found no aquatic invasive plant species. It was confirmed in 2011 that rusty crayfish are in the lake. We found no state or federally listed plant species.

Part 4. Fish Community

It was beyond the scope of the current Wilderness Waters project to characterize the fish community and fish habitat of this water body. The WDNR Lake Pages website (<http://dnr.wi.gov/lakes/lakepages/>) indicates that the bottom is comprised of 60% sand, 20% gravel, 10% rock, and 10% muck and that fish species present include panfish, largemouth bass, and northern pike.

Part 5. Water Quality and Trophic Status

Stateline Lake is a 205 acre spring lake with a maximum depth of 67 feet. Existing water quality information includes SWIMS database entries from 1984 (Northern Lakes Monitoring), 1995 (Citizen Lake Monitoring Network, CLMN), 2000, 2004, 2005, 2007, 2008, 2009 Secchi depth from the satellite lake clarity monitoring, and in August, 2010 a water sample taken by

White Water Associates. That water quality information is briefly summarized in this section, but more fully interpreted in Appendix C.

At times, temperature and dissolved oxygen showed stratification in Stateline Lake in the ice-free season. Water clarity was good and user perception of Stateline Lake aesthetic quality is generally regarded as high. Water color was brown and the appearance of the water was clear. The trophic state is mesotrophic to mildly eutrophic. Water quality would be classified as good with respect to phosphorus concentrations. Chlorophyll *a* (a measure of the amount of algae) is low. Nitrate/Nitrite was not detected and conductivity was low. The calcium level was borderline with respect to suitability for zebra mussels. Alkalinity was low (a measure of a lakes buffering capacity against acid rain). The pH of Stateline lake is alkaline.

Part 6. Water Use

Stateline Lake has no public access site available on the Wisconsin side of the lake, but public use facilities are located on both sides of the border. The outlet stream is considered navigable. There is no State of Wisconsin ownership on the lake.

Part 7. Riparian Area

Part 1 (Watershed) describes the larger riparian area context of Stateline Lake. The near shore riparian area can be appreciated by viewing Exhibits 2 and 4. The lake is lightly developed with a fairly intact forested riparian zone that extends for hundreds of feet back from the lake. The forest is a mixture of coniferous and deciduous trees and shrubs. Our review of 2011 aerial photography reveals 55 houses on the lake. This intact riparian area provides numerous important functions and values to the lake. It effectively filters runoff to the lake. It provides excellent habitat for birds and mammals. Trees that fall into the lake from the riparian zone contribute important habitat elements to the lake. Educating riparian owners as to the value of riparian areas is important to the maintenance of these critical areas.

Part 8. Wildlife

A study of wildlife was beyond the scope of the current study, but would be valuable to study and interpret in future iterations of the plan. This would be especially true of wetland and water oriented wildlife such as frogs, waterfowl, fish-eating birds, aquatic and semi-aquatic mammals, and invertebrate animals. In the future, it would be desirable to monitor indicator species of wildlife such as common loons, bald eagles, and osprey. Also of special importance

would be monitoring for the presence of aquatic invasive animal species not presently found in Stateline Lake (spiny water flea, zebra mussel, Chinese mystery snail, rainbow smelt or common carp) and to monitor existing populations of AIS (rusty crayfish).

Part 9. Stakeholders

At this juncture in the ongoing aquatic plant management planning process, the Town Lakes Committee has represented the Stateline Lake stakeholders. Additional stakeholders and interested citizens are invited to participate as the plan is refined and updated in order to broaden input, build consensus, and encourage participation in stewardship. No contentious direct plant management actions (for example, harvesting or use of herbicides) are a component of the current plan. The Town Lakes Committee has conducted a township wide lake users' survey that is presented in the overarching *Wilderness Waters Adaptive Management Plan* (Premo et al., 2014).

CHAPTER 5

Recommendations, Actions, and Objectives

In this chapter we provide recommendations for specific objectives and associated actions to support the APM Plan’s goals stated in Chapter 3 and re-stated here for convenient reference:

- (1) Monitor and protect the native aquatic plant community;*
- (2) Prevent establishment of AIS and nuisance levels of native plants;*
- (3) Promote and interpret APM efforts; and*
- (4) Educate riparian owners and lake users on preventing AIS introduction, reducing nutrient inputs that potentially alter the plant community, and minimizing physical removal of native riparian and littoral zone plants.*

Since Stateline Lake is a healthy and diverse ecosystem, we could simply recommend an alternative of “no action.” In other words, Stateline Lake continues without any effort or intervention on part of lake stewards. Nevertheless, we consider the “no action” alternative imprudent. Many forces threaten the quality of the lake and Wilderness Waters Program and Town Lakes Committee feels a great responsibility to minimize the threats. We therefore outline in this section a set of actions and related management objectives that will actively engage lake stewards in the process of management.

The actions are presented in tabular form. Each “action” consists of a set of four statements: (1) a declarative “action” statement that specifies the action (2) a statement of the “objective” that the action serves, (3) a “monitoring” statement that specifies the party responsible for carrying out the action and maintaining data, and (4) a “status” statement that suggests a timeline/calendar and indicates status (not yet started, ongoing, or completed).

At this time, we recommend no direct manipulation of plant populations in Stateline Lake. No aquatic invasive plant species are known to be present and no native plants exhibit nuisance population size or distribution.

Recommended Actions for the Stateline Lake APM Plan

Action #1: Formally adopt the Aquatic Plant Management Plan.

Objective: To provide foundation for long-term native plant community conservation and stewardship and to be prepared for response to AIS introductions.

Monitoring: The Lake Association and Town Lakes Committee oversee activity.

Status: Planned for 2013.

Action #2: Monitor water quality.

Objective: Continue with collection and analysis of water quality parameters to detect trends in parameters such as nutrients, chlorophyll *a*, and water clarity.

Monitoring: The Lake Association or Town Lakes Committee oversees activity.

Status: Ongoing.

Action #3: Monitor the lake for aquatic invasive plant species.

Objective: To understand the lake's biotic community, provide for early detection of AIS and continue monitoring any existing populations of AIS.

Monitoring: The Lake Association or Town Lakes Committee oversees activity and maintains data.

Status: Ongoing.

Action #4: Monitor the lake for aquatic invasive animal species.

Objective: To understand the lake's biotic community, provide for early detection of AIS and continue monitoring any existing populations of AIS.

Monitoring: The Lake Association or Town Lakes Committee oversees activity and maintains data.

Status: Ongoing.

Action #5: Monitor the population of rusty crayfish Stateline Lake.

Objective: Determine potential effects of this aquatic invasive animal.

Monitoring: The Lake Association or Town Lakes Committee oversees activity.

Status: Planned for 2013.

Recommended Actions for the Stateline Lake APM Plan

Action #6: Form an Aquatic Invasive Species Rapid Response Team and interface with the Town Lakes Committee AIS Rapid Response Coordinator.

Objective: To be prepared for AIS discovery and efficient response.

Monitoring: The Lake Association and/or Town Lakes Committee coordinate activity.

Status: Planned for 2013.

Action #7: Conduct quantitative plant survey every five years using WDNR Point-Intercept Methodology.

Objective: To watch for changes in native species diversity, floristic quality, plant abundance, and plant distribution and to check for the occurrence of non-native, invasive plant species.

Monitoring: Town Lakes Committee (Wilderness Waters Program) oversees and maintains data; copies to WDNR.

Status: Anticipated in 2015 or 2016.

Action #8: Update the APM plan approximately every five years or as needed to reflect new plant information from plant surveys and monitoring.

Objective: To have current information and management science included in the plan.

Monitoring: Lake Association and/or Town Lakes Committee (Wilderness Waters Program) oversees and maintains data; copies to WDNR.

Status: Ongoing.

Action #9: Develop a Citizen Lake Monitoring Network to monitor for invasive species and develop strategies including education and monitoring activities (see <http://www.uwsp.edu/cnr/uwexplakes/clmn> for additional ideas).

Objective: To create a trained volunteer corps to monitor aquatic invasive species and to educate recreational users regarding AIS.

Monitoring: The Lake Association oversees activity and reports instances of possible introductions of AIS.

Status: Anticipated to begin in 2013.

Recommended Actions for the Stateline Lake APM Plan

Action #10: Become familiar with and recognize the water quality and habitat values of ordinances and requirements on boating, septic, and property development.

Objective: To protect native aquatic plants, water quality, and riparian habitat.

Monitoring: Lake residents and other stakeholders.

Status: Ongoing.

Action #11: Promote adherence to, and enforcement of, the Town of Presque Isle's 200 foot no-wake ordinances (from shoreline and islands).

Objective: To minimize recreational impacts on the aquatic plant community and shoreline habitats, and promote safe boating.

Monitoring: Town Lakes Committee oversees activity and assesses effectiveness.

Status: Ongoing.

Action #12: Create an education plan for the property owners and other stakeholders that will address issues concerning aquatic and riparian plant communities.

Objective: To educate stakeholders about issues and topics that affect the lake's aquatic and riparian plant communities, including topics such as: (1) the importance of the aquatic plant community; (2) no or minimal mechanical removal of plants along the shoreline is desirable and that any plant removal should conform to Wisconsin regulations; (3) the value of a natural shoreline in protecting the aquatic plant community and lake health; (4) nutrient sources to the lake and the role excess nutrients play in degradation of the aquatic plant community; (5) the importance of reducing or eliminating use of fertilizers on lake front property; (6) the importance of minimizing transfer of AIS to the lake by having dedicated watercraft and cleaning boats that visit the lake.

Monitoring: Town Lakes Committee oversee(s) activity and assesses effectiveness.

Status: Anticipated to begin in 2013.

Action #13: Monitor the lake watershed for purple loosestrife.

Objective: Identify purple loosestrife populations before they reach large size.

Monitoring: The Lake Association and/or Town Lakes Committee oversees activity.

Status: Anticipated in 2013.

CHAPTER 6

Contingency Plan for AIS

Unfortunately, sources of aquatic invasive plants and other AIS are numerous in Wisconsin. Some infested lakes are quite close to Presque Isle Township. There is an increasing likelihood of accidental introduction of AIS to Presque Isle Township Lakes through conveyance of life stages by boats, trailers, and other vectors. It is important for the Town Lakes Committee and other lake stewards to be prepared for the contingency of aquatic invasive plant species colonization in a Presque Isle Township water body.

For riparian owners and users of a lake ecosystem, the discovery of AIS is a tragedy that elicits an immediate desire to “fix the problem.” Although strong emotions may be evoked by such a discovery, a deliberate and systematic approach is required to appropriately and effectively address the situation. An aquatic plant management plan (one including a contingency plan for AIS) is the best tool by which the process can be navigated. In fact the APM plan is a requirement in Wisconsin for some kinds of aquatic plant management actions. One of the actions outlined in the previous chapter was to establish an Aquatic Invasive Species Rapid Response Team. This team and its coordinator are integral to the management process. It is important for this team to be multi-dimensional (or at least have quick access to the expertise that may be required). AIS invade not just a single lake, but an entire region since the new infestation is an outpost from which the AIS can more easily colonize other nearby water bodies. For this reason it is strategic for the Rapid Response Team to include representation from regional stakeholders.

Exhibit 8 provides a flowchart outlining an appropriate rapid response to the suspected discovery of an aquatic invasive plant species. The response will be most efficient if an AIS Rapid Response Team has already been established and is familiar with the contingency plan. In the remainder of this chapter we further describe the approach.

When a suspect aquatic invasive plant species is found, either the original observer or a member of the Rapid Response Team (likely the coordinator) should collect an entire plant specimen including roots, stems, and flowers (if present). The sample should be placed in a sealable bag with a small amount of water to keep it moist. Place a label in the bag written in pencil with date, time, collector’s name, lake name, location, town, and county. Attach a lake

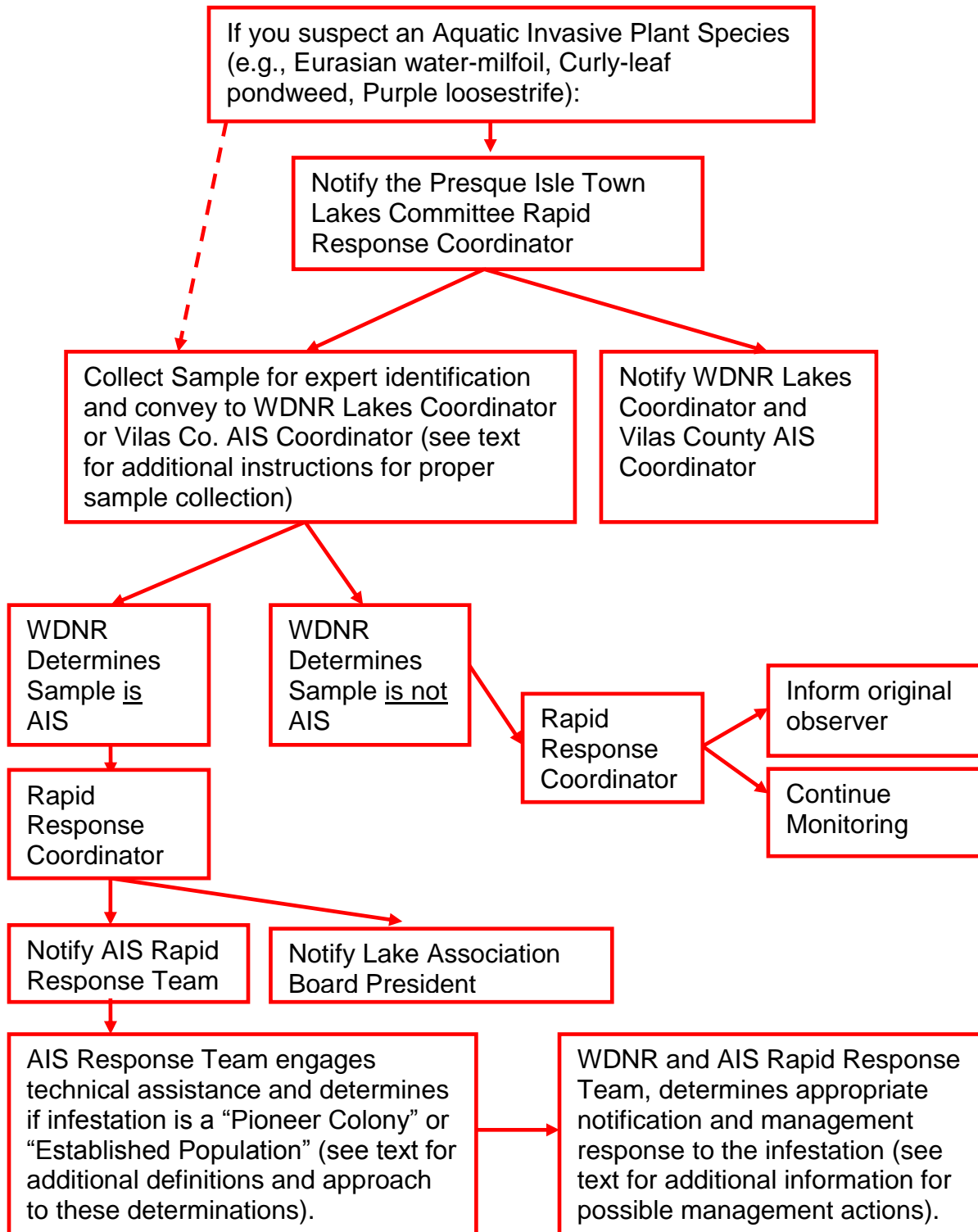
map to the bag that has the location of the suspect AIS marked and GPS coordinates recorded (if GPS is available). The sample should be placed on ice in a cooler or in a refrigerator. Deliver the sample to the WDNR Water Resource Management Specialist (Kevin Gauthier in Woodruff) or the Vilas County AIS Coordinator (Ted Ritter) as soon as possible (at least within three days). The WDNR or their botanical expert(s) will determine the species and confirm whether it is an aquatic invasive plant species.

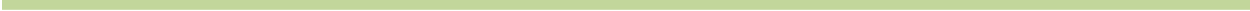
If the suspect specimen is determined to be an invasive plant species, the next step is to determine the extent and density of the population since the management response will vary accordingly. The Rapid Response Team should conduct (or have its consultant conduct) a survey to define the colony's perimeter and estimate density. If less than five acres (or <5% of the lake surface area), it is designated a "Pioneer Colony." If greater than five acres (or >5% of the lake surface area) then it is designated an "Established Population." Once the infestation is characterized, "at risk" areas should also be determined and marked on a map. For example, nearby boat landing sites and areas of high boat traffic should be indicated.

When "pioneer" or "established" status has been determined, it is time to consult with the WDNR Lakes Coordinator to determine appropriate notifications and management responses to the infestation. Determining whether hand-pulling or chemical treatment will be used is an important and early decision. Necessary notifications of landowners, governmental officials, and recreationists (at boat landings) will be determined. Whether the population's perimeter needs to be marked with buoys will be decided by the WDNR. Funding sources will be identified and consultants and contractors will be contacted where necessary. The WDNR will determine if a further baseline plant survey is required (depending on type of treatment). A post treatment monitoring plan will be discussed and established to determine the efficacy of the selected treatment.

Once the Rapid Response Team is organized, one of its first tasks is to develop a list of contacts and associated contact information (phone numbers and email addresses). At a minimum, this contact list should include: the Rapid Response Coordinator, members of the Rapid Response Team, County AIS Coordinator, WDNR Lakes Management Coordinator, Lake Association Presidents (or other points of contact), local WDNR warden, local government official(s), other experts, chemical treatment contractors, and consultant(s).

Exhibit 8. Aquatic Invasive Plant Species Rapid Response





Appendix A
Literature Cited

LITERATURE CITED

- Hauxwell, J., S. Knight, K. Wagner, A. Mikulyuk, M. Nault, M. Porzky and S. Chase. 2010. *Recommended baseline monitoring of aquatic plants in Wisconsin: sampling design, field and laboratory procedures, data entry and analysis, and applications*. Wisconsin Department of Natural Resources Bureau of Science Services, PUB-SS-1068 2010. Madison, WI.
- Nichols, Stanley A. 1999. Floristic Quality Assessment of Wisconsin Lake Plant Communities with Example Applications. *Journal of Lake and Reservoir Management* 15(2): 133-141.
- Premo, Dean, Angie Stine, Caitlin Clarke, and Kent Premo. 2014. *Presque Isle Wilderness Waters Adaptive Management Plan*. White Water Associates, Inc. Amasa, MI.
- US Department of Agriculture, Natural Resources Conservation Service. June 1986. *Urban Hydrology for Small Watersheds*. Technical Release-55.
- Walters, C. 1986. Objectives, constraints, and problem bounding. In W.M. Getz, ed., *Adaptive Management of Renewable Resources*. Macmillan Publishing Company. New York. p. 13+.

Appendix B

Aquatic Plant Survey Tables and Figures

Table of Contents

Table 1. Summary statistics for point-intercept aquatic plant survey.

Table 2. Plant species and distribution statistics.

Figure 1. Number of plant species recorded at sample sites.

Figure 2. Rake fullness ratings for sample sites.

Figure 3. Maximum depth of plant colonization.

Figure 4. Sampling sites less than or equal to maximum depth of rooted vegetation.

Figure 5. Substrate encountered at point-intercept plant sampling sites.

Figure 6. Aquatic plant occurrences for 2010 point-intercept survey data.

Figure 7-14. Distribution of plant species.

Table 1. Summary statistics for the 2010 point-intercept aquatic plant surveys for Stateline Lake.

Summary Statistic	Value	Notes
Total number of sites on grid	924	Total number of sites on the original grid (not necessarily visited)
Total number of sites visited	854	Total number of sites where the boat stopped, even if much too deep to have plants.
Total number of sites with vegetation	294	Total number of sites where at least one plant was found
Total number of sites shallower than maximum depth of plants	500	Number of sites where depth was less than or equal to the maximum depth where plants were found. This value is used for Frequency of occurrence at sites shallower than maximum depth of plants.
Frequency of occurrence at sites shallower than maximum depth of plants	59.00	Number of times a species was seen divided by the total number of sites shallower than maximum depth of plants.
Simpson Diversity Index	0.89	A nonparametric estimator of community heterogeneity. It is based on Relative Frequency and thus is not sensitive to whether all sampled sites (including non-vegetated sites) are included. The closer the Simpson Diversity Index is to 1, the more diverse the community.
Maximum depth of plants (ft.)	15.00	The depth of the deepest site sampled at which vegetation was present.
Number of sites sampled with rake on rope	19	
Number of sites sampled with rake on pole	449	
Average number of all species per site (shallower than max depth)	1.93	
Average number of all species per site (vegetated sites only)	3.27	
Average number of native species per site (shallower than max depth)	1.93	Total number of species collected. Does not include visual sightings.
Average number of native species per site (vegetated sites only)	3.27	Total number of species collected including visual sightings.
Species Richness	32	
Species Richness (including visuals)	34	
Floristic Quality Index (FQI)	35.1	

Table 2. Plant species recorded and distribution statistics for the 2010 Stateline Lake aquatic plant survey.

Common name	Scientific name	Frequency of occurrence at sites less than or equal to maximum depth of plants	Frequency of occurrence within vegetated areas (%)	Relative Frequency (%)	Number of sites where species found	Number of sites where species found (including visuals)	Average Rake Fullness
Fern pondweed	<i>Potamogeton robbinsii</i>	36.8	62.4	19.0	184	187	1.29
Coontail	<i>Ceratophyllum demersum</i>	33.2	56.3	17.2	166	174	1.20
Common waterweed	<i>Elodea canadensis</i>	26.4	44.7	13.7	132	134	1.10
Flat-stem pondweed	<i>Potamogeton zosteriformis</i>	15.4	26.1	8.0	77	88	1.01
Wild celery	<i>Vallisneria americana</i>	12.2	20.7	6.3	61	67	1.15
Northern water-milfoil	<i>Myriophyllum sibiricum</i>	12.0	20.3	6.2	60	76	1.03
White water lily	<i>Nymphaea odorata</i>	10.6	18.0	5.5	53	102	1.06
Large-leaf pondweed	<i>Potamogeton amplifolius</i>	6.2	10.5	3.2	31	58	1.06
Slender naiad	<i>Najas flexilis</i>	4.0	6.8	2.1	20	20	1.00
Forked duckweed	<i>Lemna trisulca</i>	3.2	5.4	1.7	16	17	1.06
Water marigold	<i>Bidens beckii</i> (formerly <i>Megalodonta</i>)	2.8	4.7	1.4	14	16	1.00
Watershield	<i>Brasenia schreberi</i>	2.8	4.7	1.4	14	24	1.07
Spatterdock	<i>Nuphar variegata</i>	2.8	4.7	1.4	14	37	1.14
Floating-leaf pondweed	<i>Potamogeton natans</i>	2.8	4.7	1.4	14	24	1.00
Ribbon-leaf pondweed	<i>Potamogeton epihydrus</i>	2.6	4.4	1.3	13	16	1.00
Leafy pondweed	<i>Potamogeton foliosus</i>	2.6	4.4	1.3	13	13	1.00
Small pondweed	<i>Potamogeton pusillus</i>	2.6	4.4	1.3	13	13	1.00
Common bladderwort	<i>Utricularia vulgaris</i>	2.6	4.4	1.3	13	14	1.00
Clasping-leaf pondweed	<i>Potamogeton richardsonii</i>	2.2	3.7	1.1	11	19	1.00
Water star-grass	<i>Heteranthera dubia</i>	2.0	3.4	1.0	10	14	1.00
Variable pondweed	<i>Potamogeton gramineus</i>	2.0	3.4	1.0	10	13	1.00
White-stem pondweed	<i>Potamogeton praelongus</i>	1.2	2.0	0.6	60	7	1.00

Frequency of occurrence within vegetated areas (%): Number of times a species was seen in a vegetated area divided by the total number of vegetated sites.

Table 2. Continued

Common name	Scientific name	Frequency of occurrence at sites less than or equal to maximum depth of plants	Frequency of occurrence within vegetated areas (%)	Relative Frequency (%)	Number of sites where species found	Number of sites where species found (including visuals)	Average Rake Fullness
Nitella	<i>Nitella</i> sp.	0.8	1.4	0.4	4	5	1.00
Pickerelweed	<i>Pontederia cordata</i>	0.8	1.4	0.4	4	27	1.25
Fries' pondweed	<i>Potamogeton friesii</i>	0.8	1.4	0.4	4	4	1.00
Muskgrasses	<i>Chara</i> sp.	0.4	0.7	0.2	2	2	1.00
Arum-leaved arrowhead	<i>Sagittaria cuneata</i>	0.4	0.7	0.2	2	2	1.00
Bottle brush sedge	<i>Carex comosa</i>	0.2	0.3	0.1	1	2	1.00
Stiff pondweed	<i>Potamogeton strictifolius</i>	0.2	0.3	0.1	1	1	1.00
Hardstem bulrush	<i>Schoenoplectus acutus</i>	0.2	0.3	0.1	1	14	1.00
Bur-reed	<i>Sparganium</i> sp.	0.2	0.3	0.1	1	6	1.00
<i>Potamogeton</i> sp.	<i>Potamogeton</i> sp.	0.2	0.3	0.1	1	1	1.00
Three-way sedge	<i>Dulichium arundinaceum</i>				Visual	4	
Cattail	<i>Thypha</i> sp.				Visual	2	
Northern blue flag iris	<i>Iris versicolor</i>				Boat Survey		
Southern naiad	<i>Najas guadalupensis</i>				Boat Survey		
Spatterdock	<i>Nuphar variegata</i>				Boat Survey		
Arrowhead	<i>Sagittaria</i> sp.				Boat Survey		

Frequency of occurrence within vegetated areas (%): Number of times a species was seen in a vegetated area divided by the total number of vegetated sites.

Figure 1. Number of plant species recorded at Stateline Lake sample sites (2010).

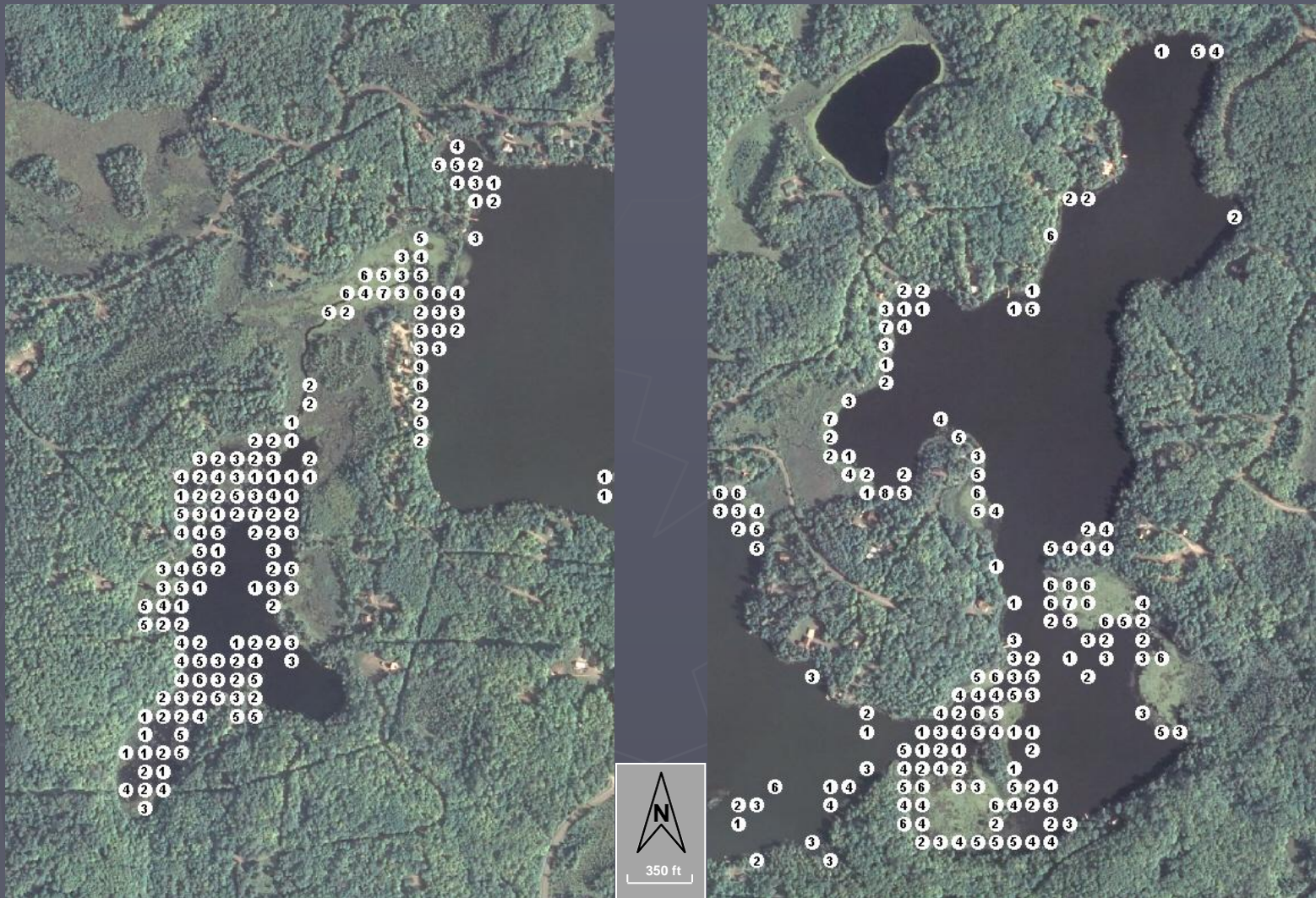


Figure 2. Rake fullness ratings for Stateline Lake sample sites (2010).

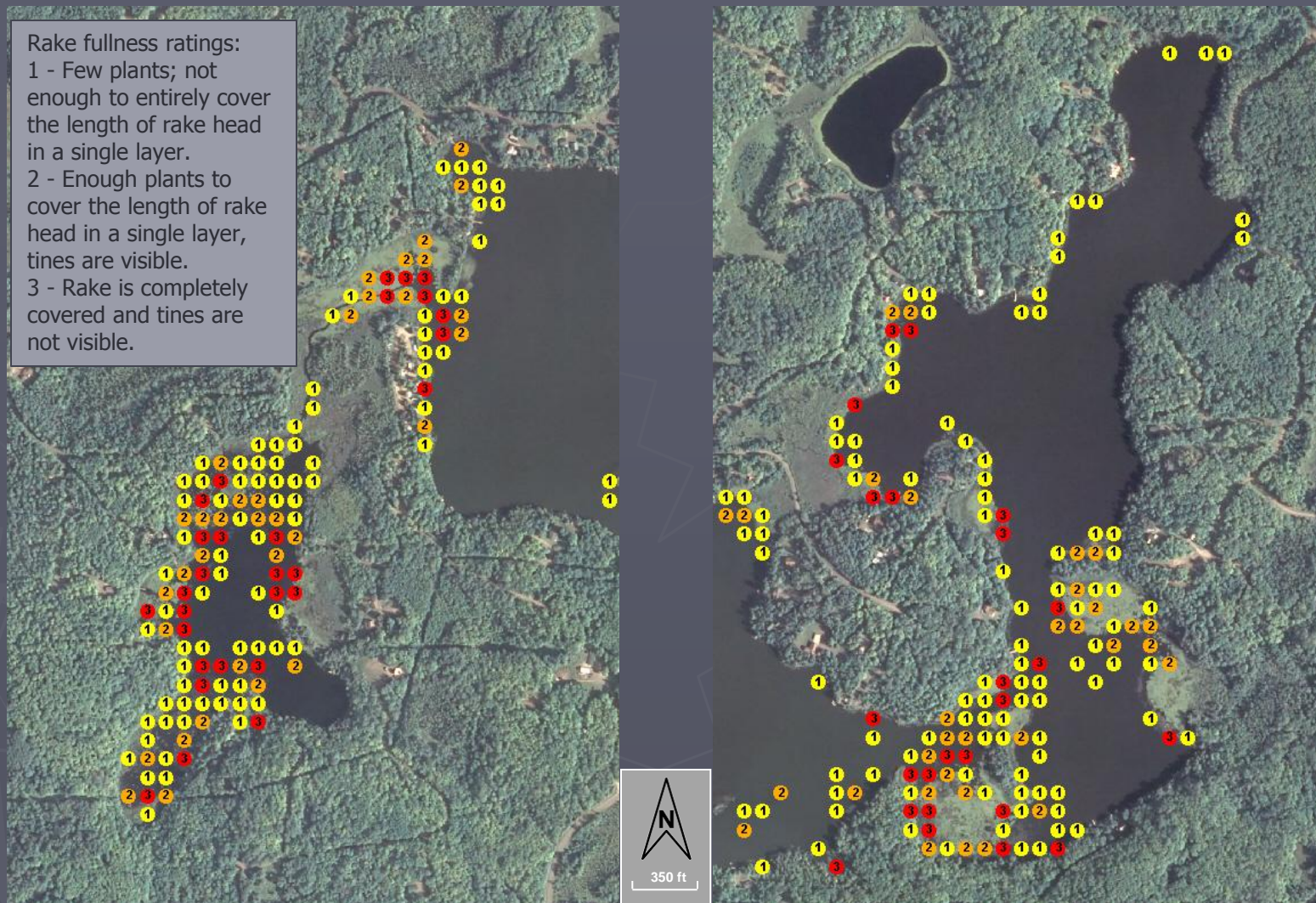


Figure 3. Maximum Depth of Plant Colonization in Stateline Lake.

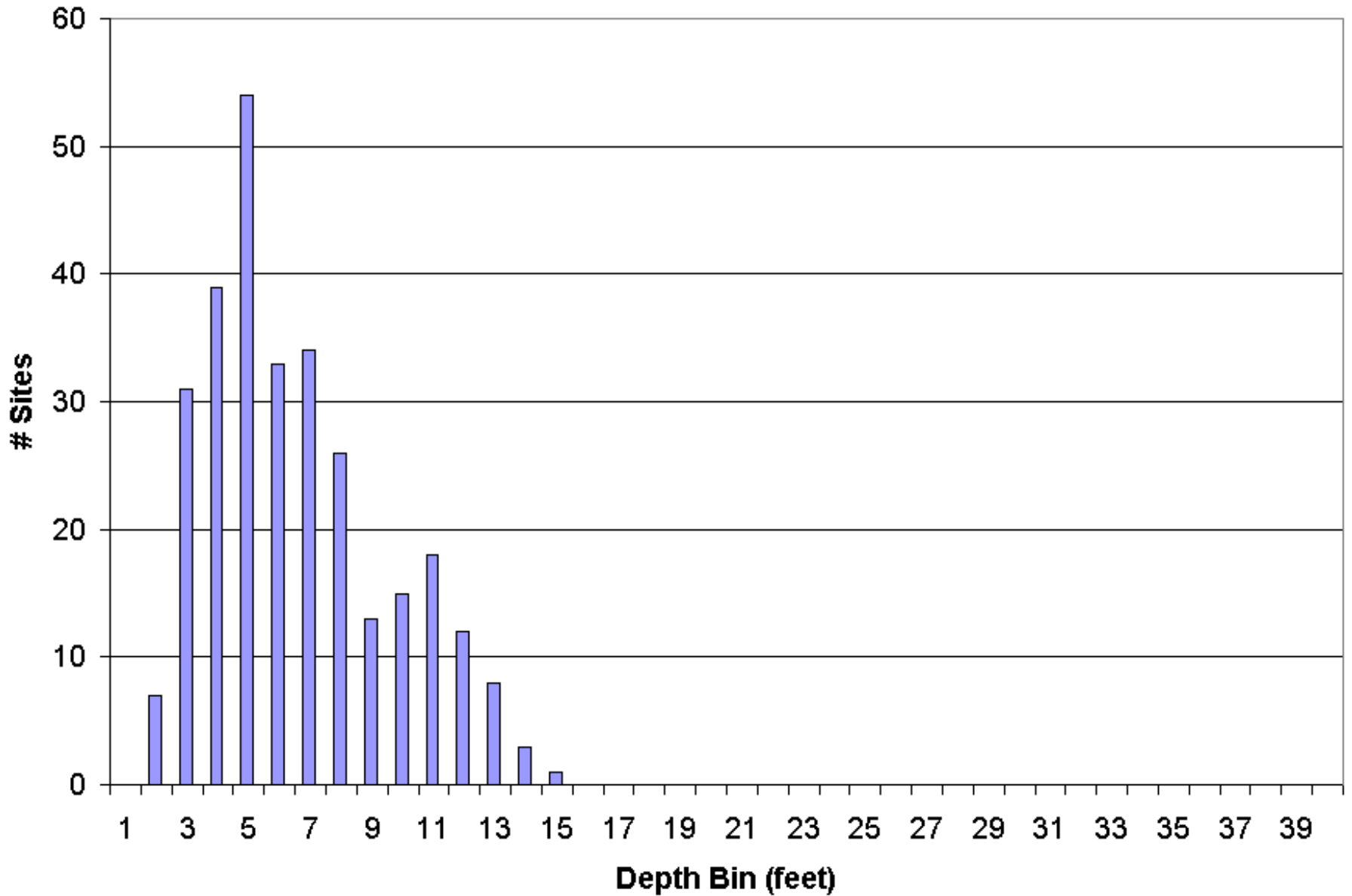


Figure 4. Stateline Lake sampling sites less than or equal to maximum depth of rooted vegetation (2010).

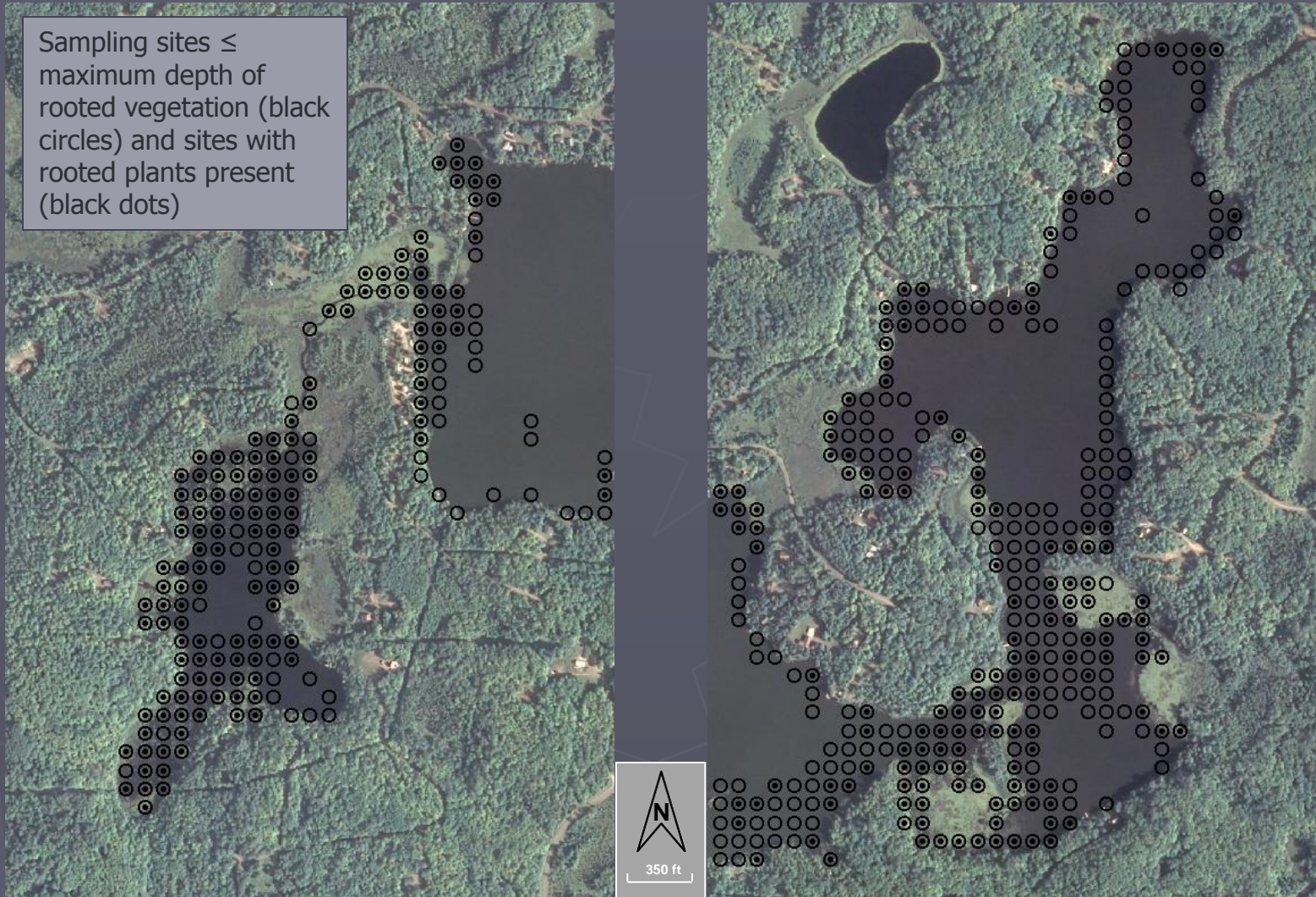


Figure 5. Stateline Lake substrate encountered at point-intercept plant sampling sites (2010).

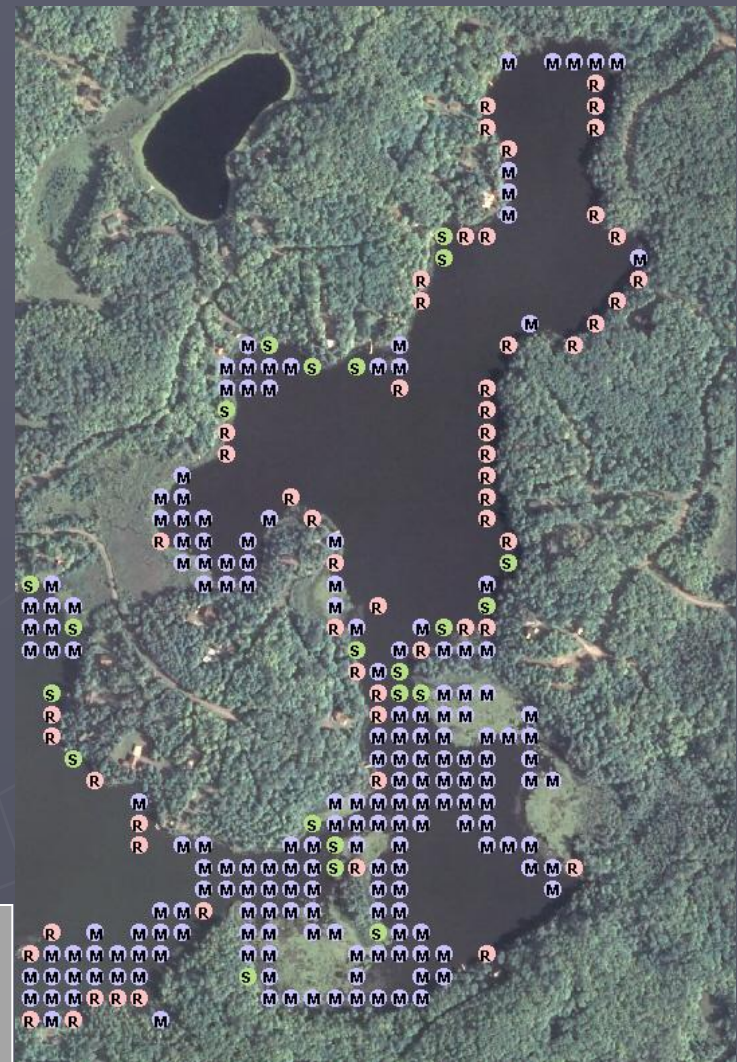
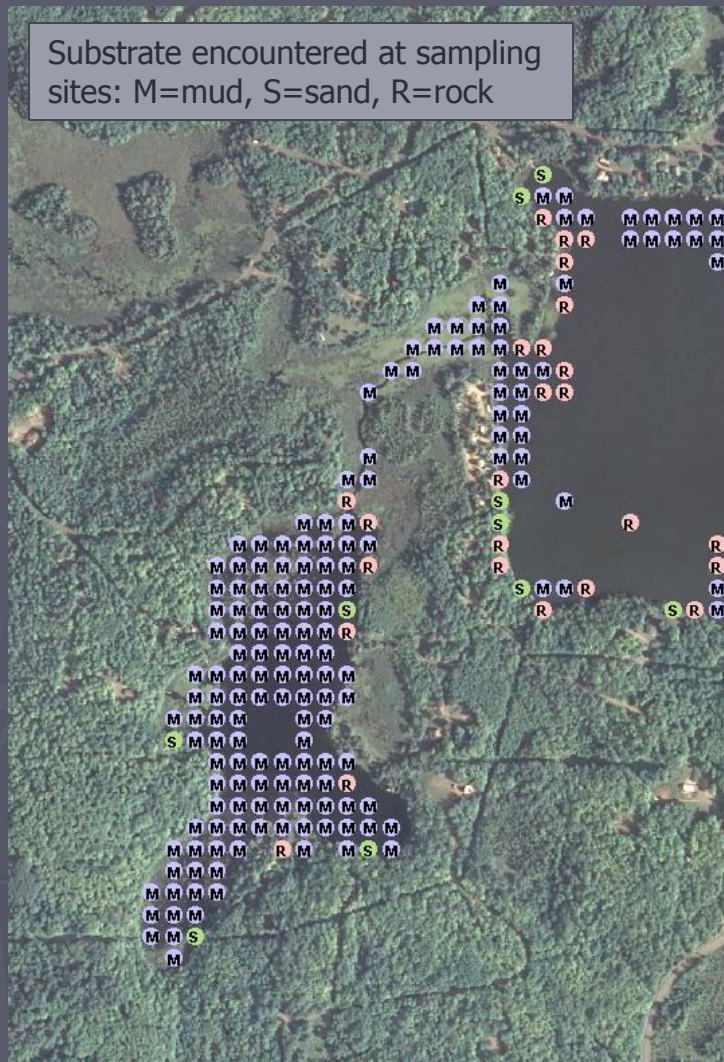


Figure 6. Stateline Lake aquatic plant occurrences for 2010 point-intercept survey data.

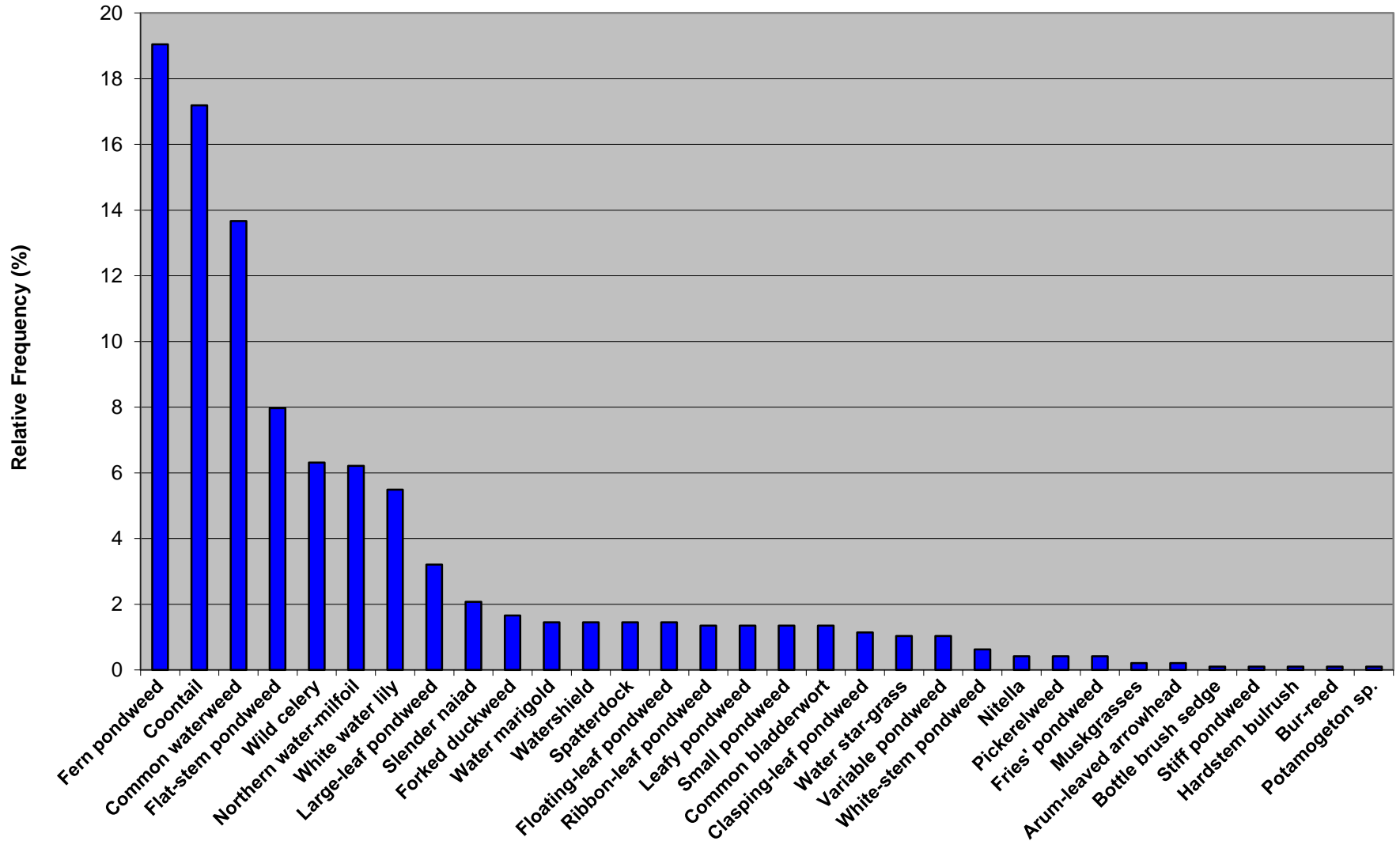
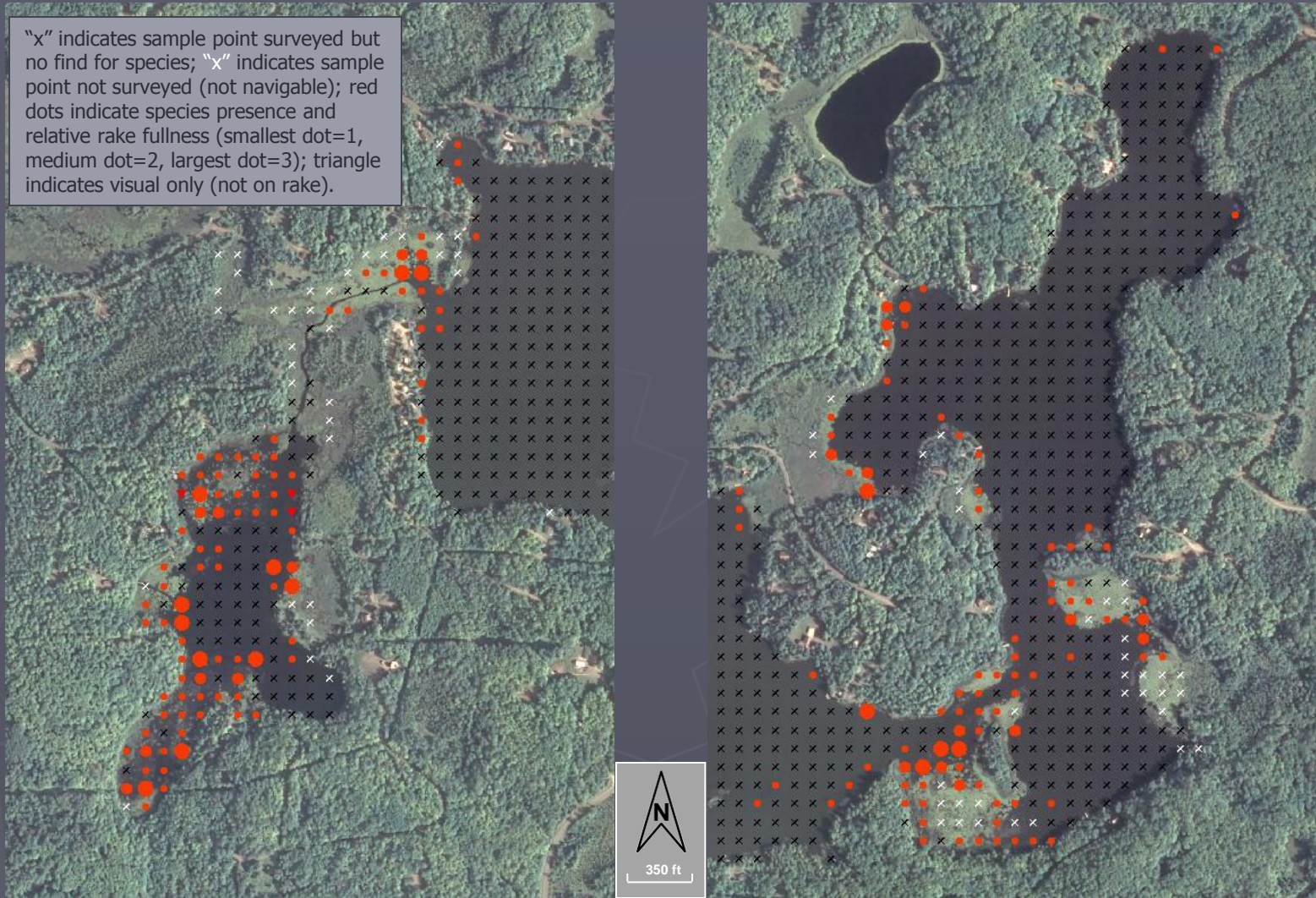
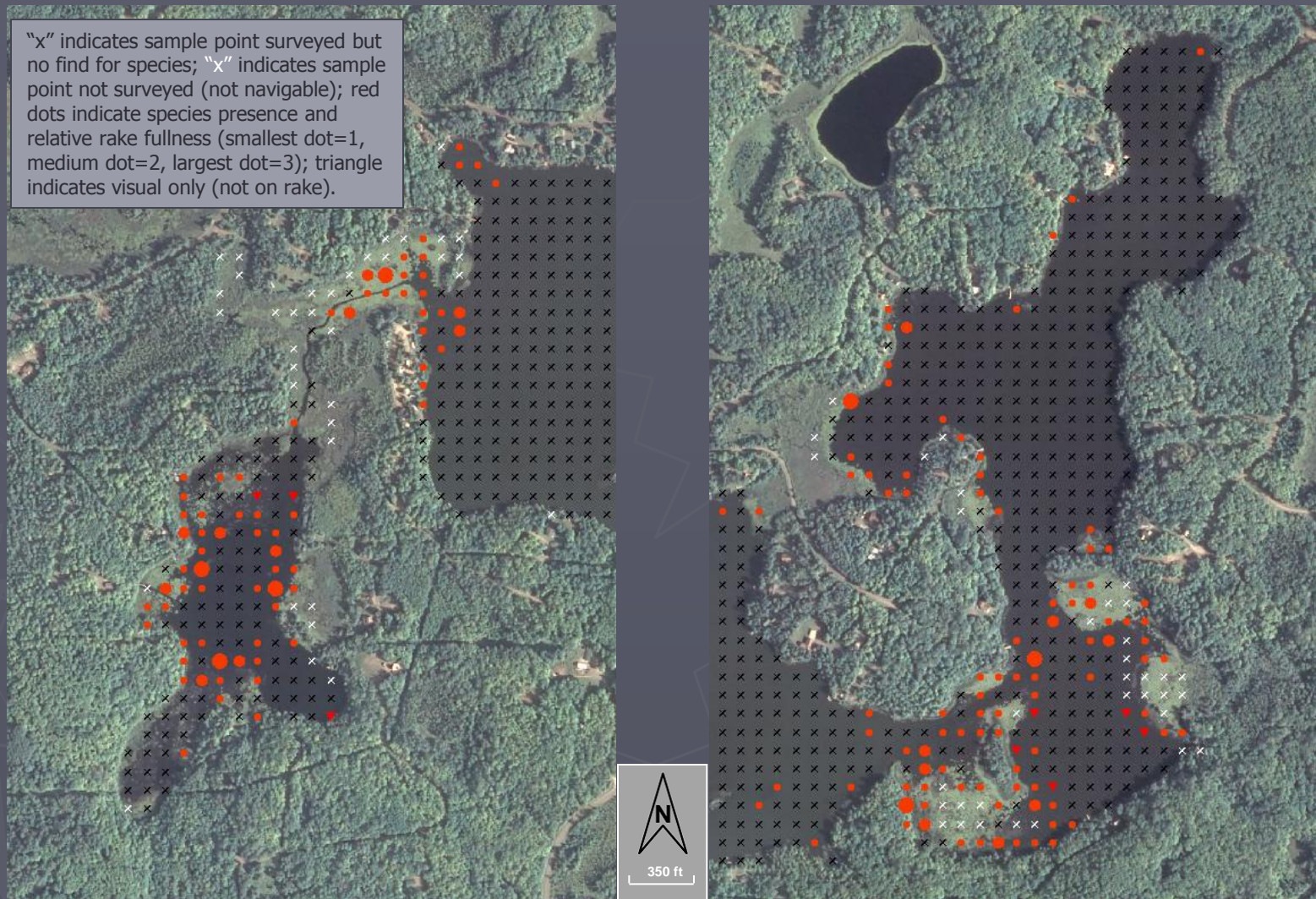


Figure 7. Distribution of plant species, Stateline Lake (2010)



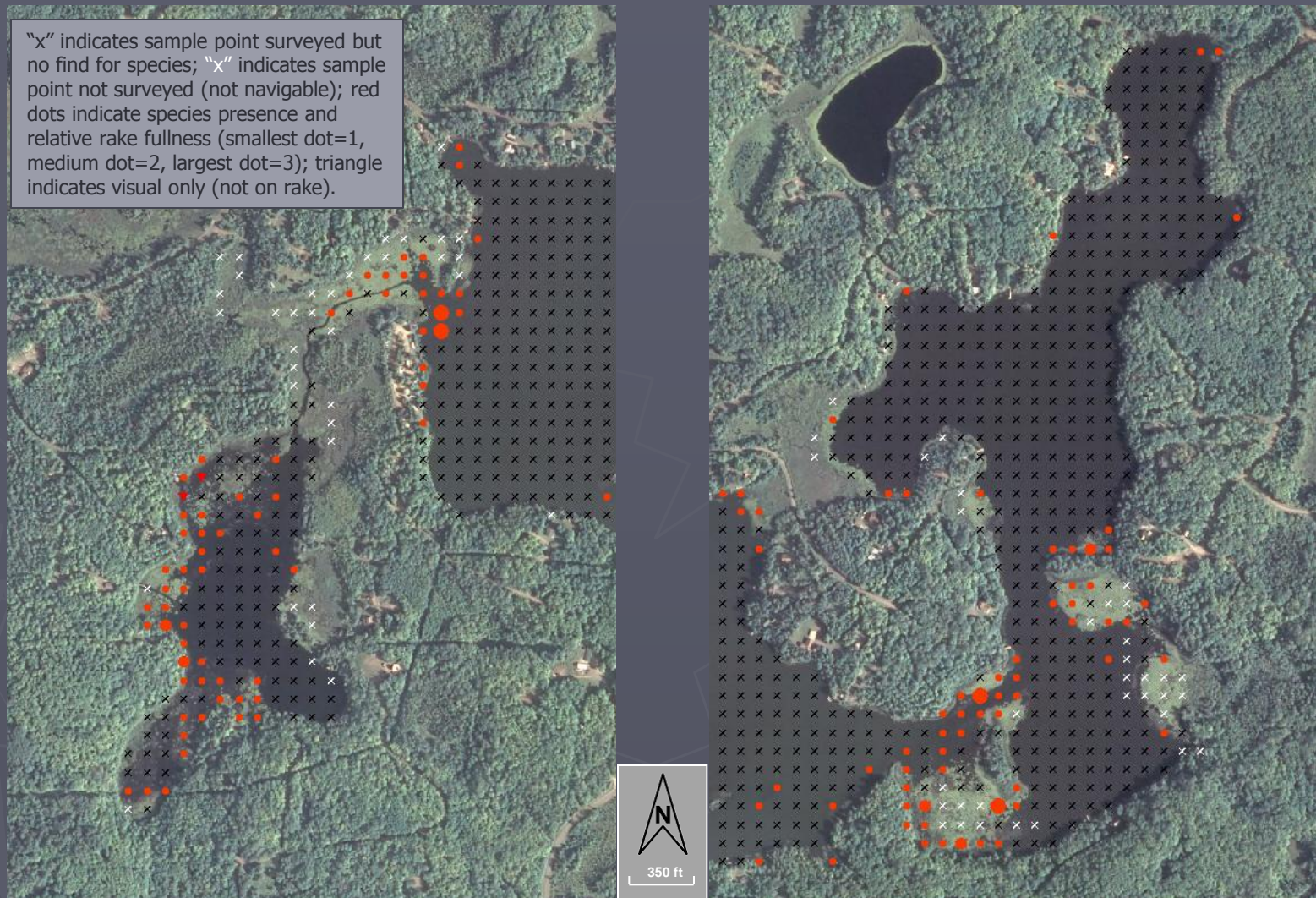
Potamogeton robbinsii (Fern pondweed)

Figure 8. Distribution of plant species, Stateline Lake (2010)



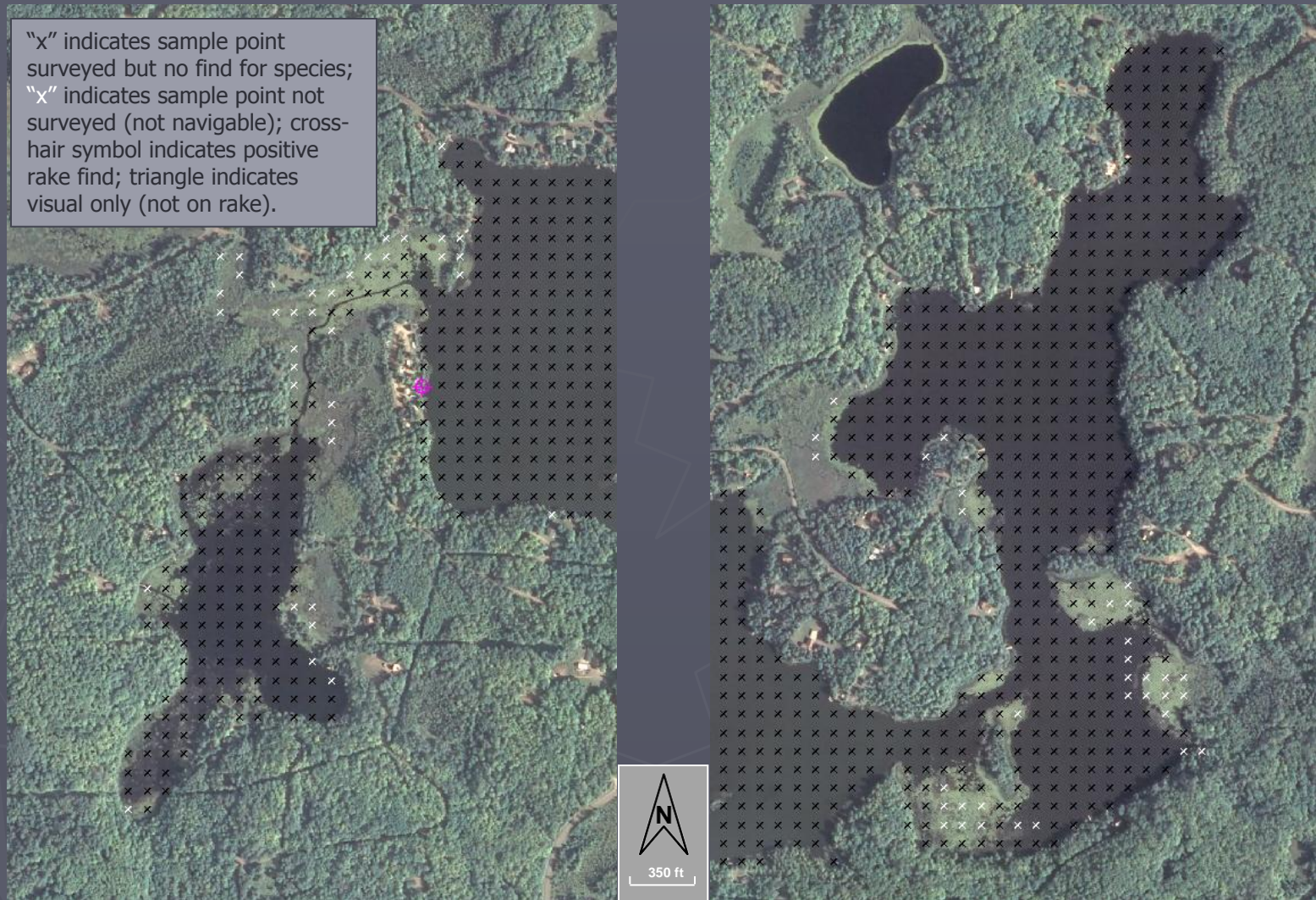
Ceratophyllum demersum (Coontail)

Figure 9. Distribution of plant species, Stateline Lake (2010)



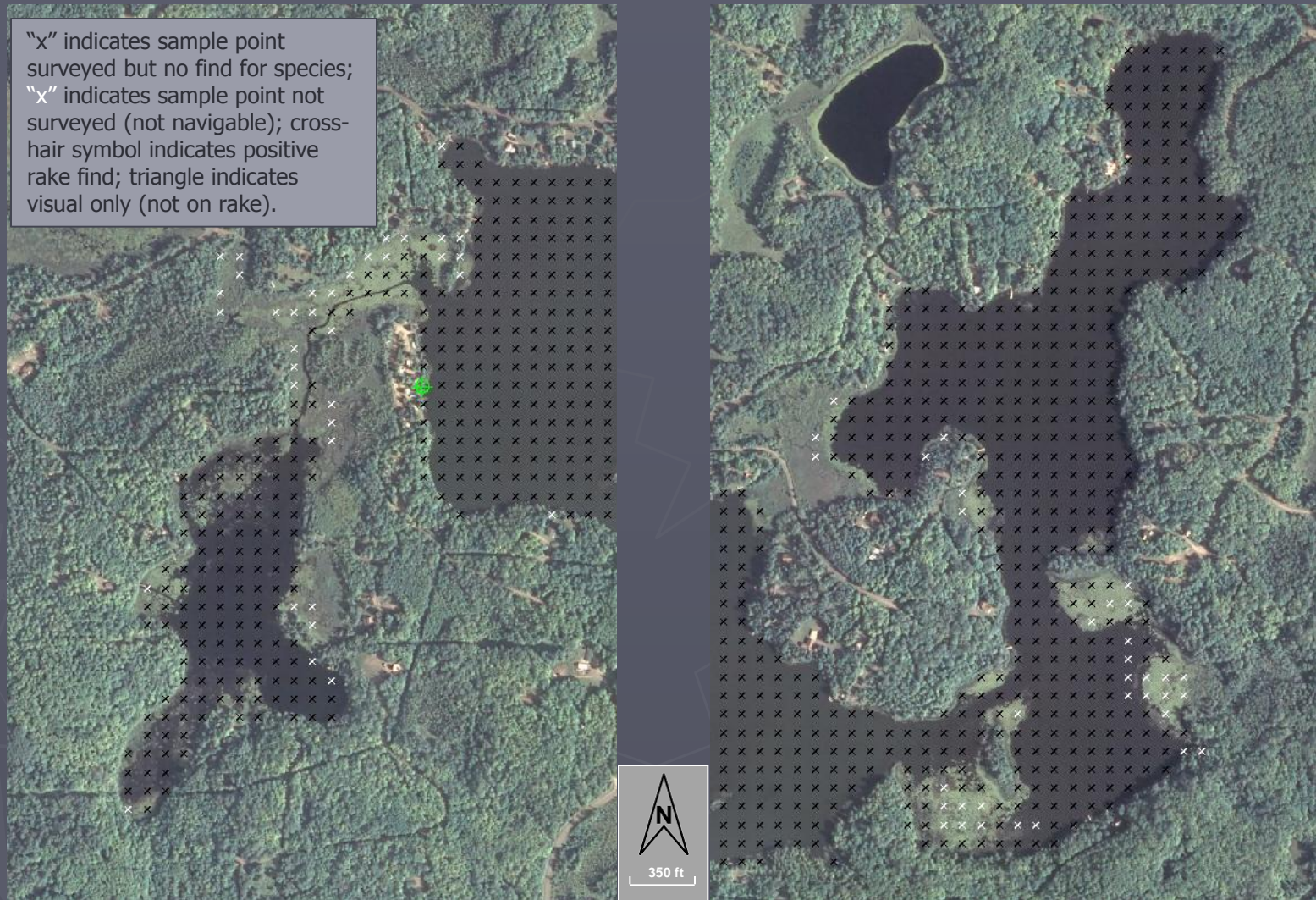
Elodea canadensis (Common waterweed)

Figure 10. Distribution of plant species, Stateline Lake (2010)



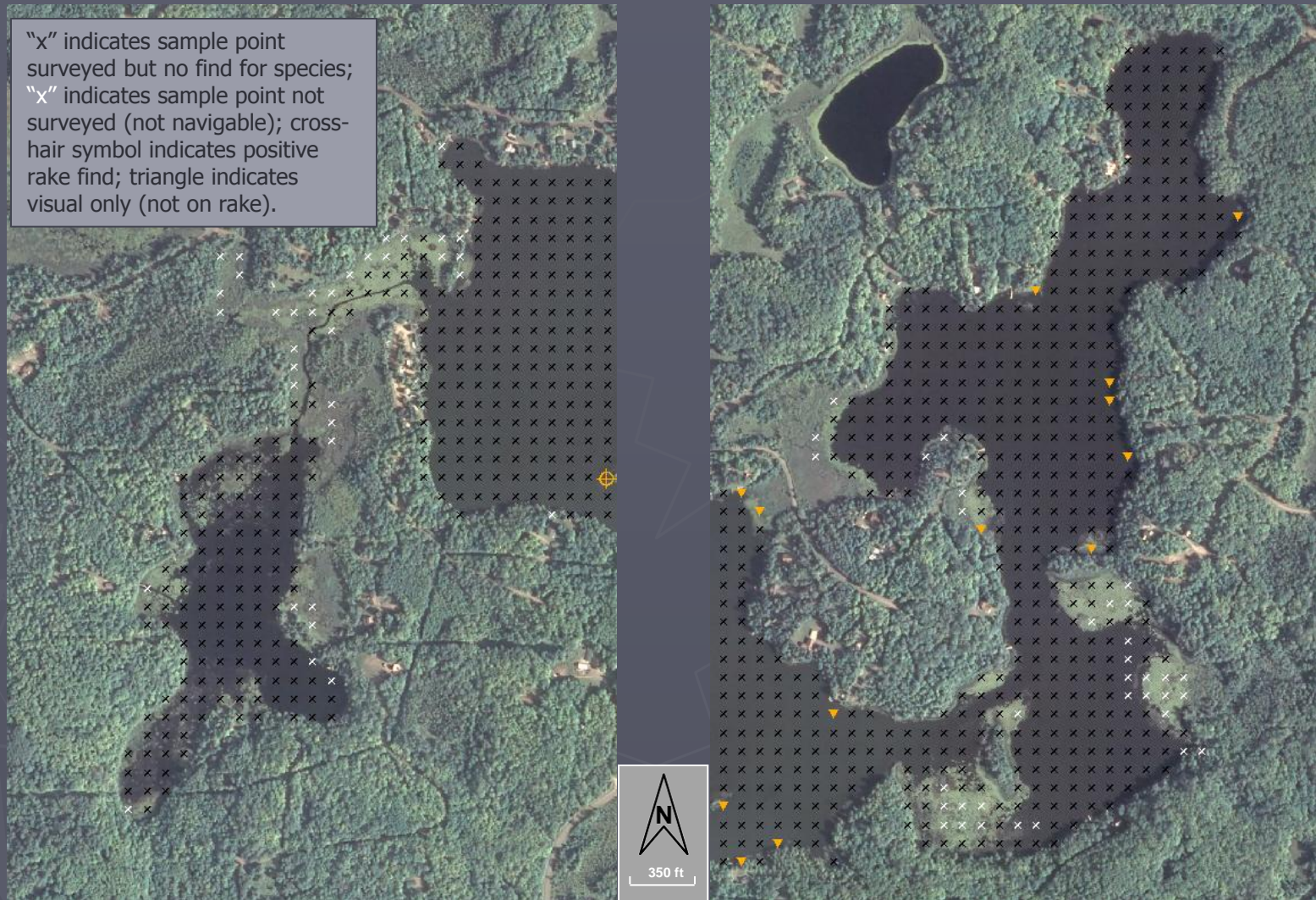
Carex comosa (Bottle brush sedge)

Figure 11. Distribution of plant species, Stateline Lake (2010)



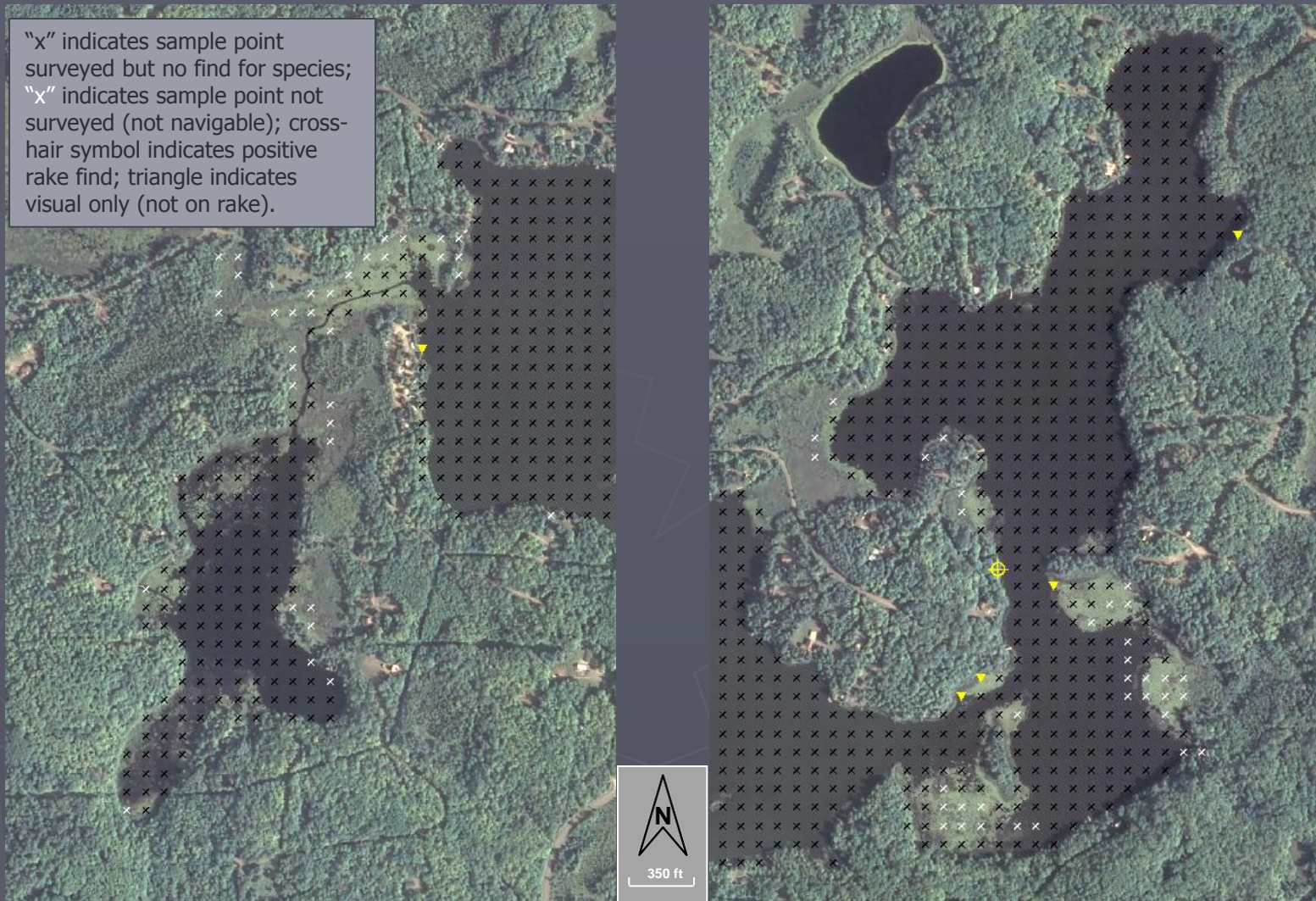
Potamogeton strictifolius (Stiff pondweed)

Figure 12. Distribution of plant species, Stateline Lake (2010)



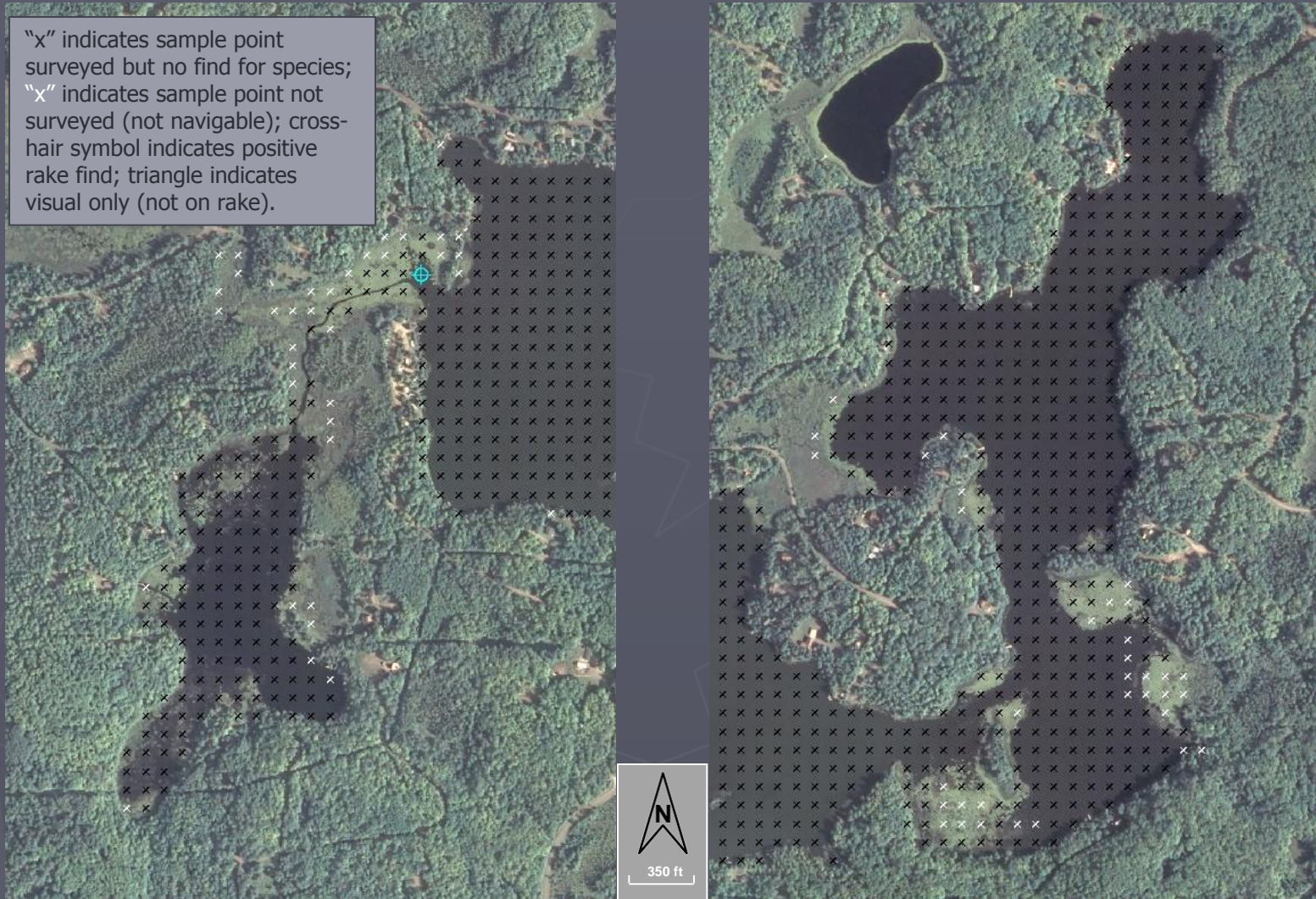
Schoenoplectus acutus (Hardstem bulrush)

Figure 13. Distribution of plant species, Stateline Lake (2010)



Sparganium sp. (Bur-reed)

Figure 14. Distribution of plant species, Stateline Lake (2010)



Appendix C

Review of Lake Water Quality

Table of Contents

Introduction.....	1
Temperature	1
Dissolved Oxygen.....	2
Water Clarity.....	3
Turbidity	5
Water Color.....	5
Water Level.....	5
User Perceptions	6
Chlorophyll <i>a</i>	6
Phosphorus.....	6
Trophic State.....	7
Nitrogen	8
Chloride	9
Sulfate	9
Conductivity.....	9
pH.....	9
Alkalinity	10
Hardness.....	10
Calcium and Magnesium Hardness	10
Sodium and Potassium.....	11
Dissolved Organic Carbon.....	11
Silica	11
Aluminum	11
Iron.....	11
Manganese	12
Sediment	12
Total Suspended Solids.....	12
Aquatic Invasive Species	12
Resources	13

Review of Stateline Lake Water Quality

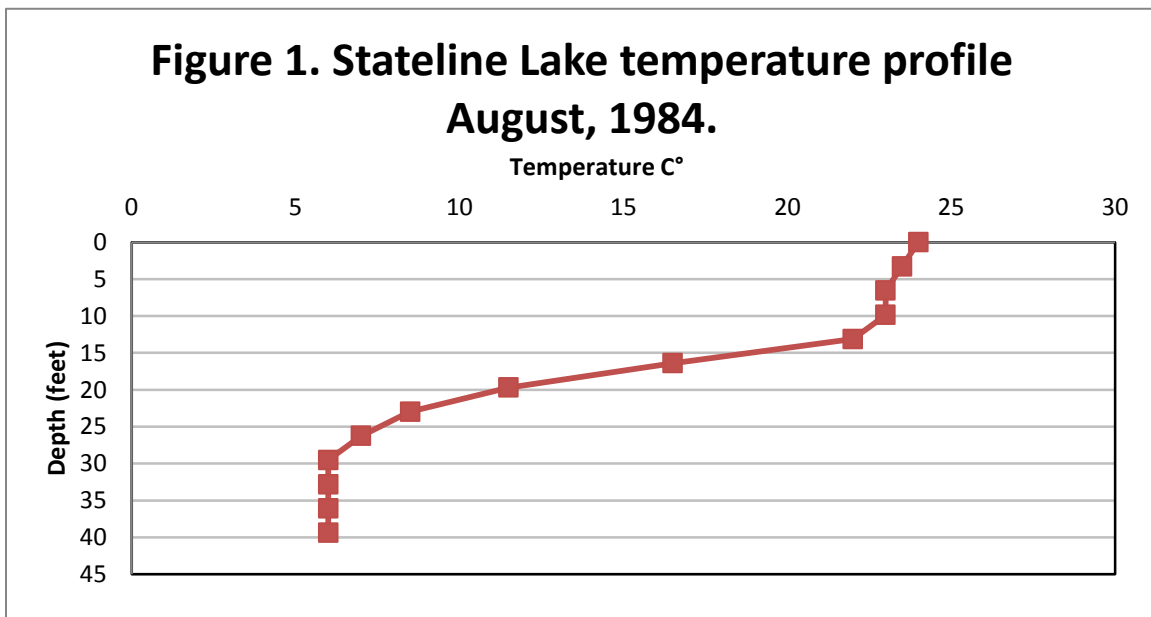
Prepared by Angie Stine, B.S., and Caitlin Clarke, B.S., White Water Associates, Inc.

Introduction

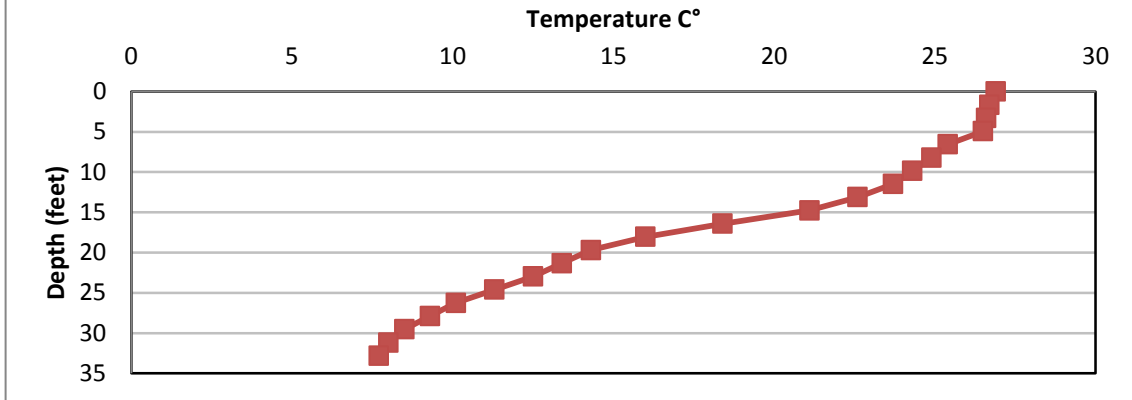
Stateline Lake is a 205 acre spring lake with a maximum depth of 67 feet. The WBIC is 2952100. For the purpose of this review, we used water quality data from Black collected in 1960; from the SWIMS database collected in 1984 by Northern Lakes Monitoring; from Citizen Lake Monitoring Network collected in 1995; Secchi depth data collected by Satellite Lake Clarity Monitoring in 2000, 2004, 2005, 2007, 2008, 2009; and samples collected by White Water Associates Inc., in August, 2010. In 2008 and 2010, a report on loons was available, and in 2011, the rusty crayfish was confirmed in Stateline Lake.

Temperature

Measuring the temperature of a lake at different depths will determine the influence it has on the physical, biological, and chemical aspects of the lake. Lake water temperature influences the rate of decomposition, nutrient recycling, lake stratification, and dissolved oxygen concentration. Temperature can also affect the distribution of fish species throughout a lake. Figure 1 indicates that the Stateline Lake stratified between 13 and 20 feet in 1984. Figure 2 shows that the lake stratifies between 9 and 20 feet. There is an increase in about 3 degrees in the surface water temperature from 1984 to 2010.



**Figure 2. Stateline Lake temperature profile
August, 2010.**



Dissolved Oxygen

The dissolved oxygen content of lake water is vital in determining presence of fish species and other aquatic organisms. Dissolved oxygen also has a strong influence on the chemical and physical conditions of a lake. The amount of dissolved oxygen is dependent on the water temperature, atmospheric pressure, and biological activity. Oxygen levels are increased by aquatic plant photosynthesis, but reduced by respiration of plants, decomposer organisms, fish, and invertebrates. The amount of dissolved oxygen available in a lake, particularly in the deeper parts of a lake, is critical to overall health. Figure 3 indicates that the Stateline Lake dissolved oxygen level began to decrease at 13 feet. Figure 4 shows the profile for August, 2010, and the dissolved oxygen level is near zero at 20 feet, but increases to around 9 mg/L closer to the surface.

**Figure 3. Stateline Lake dissolved oxygen
profile, August, 1984.**

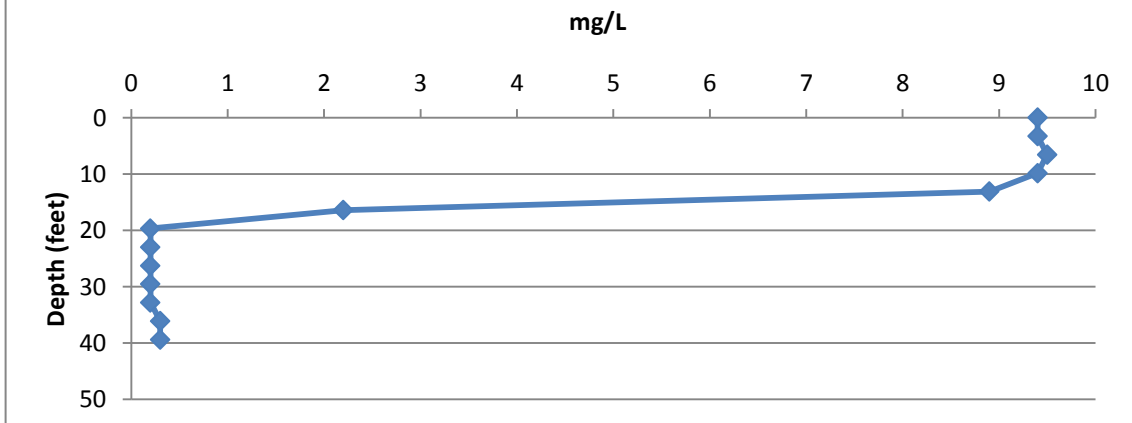
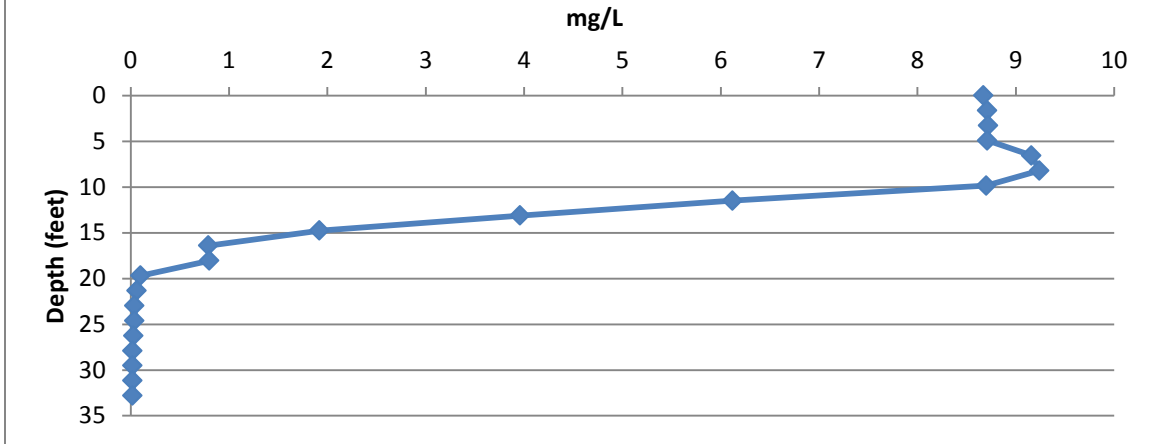


Figure 4. Stateline Lake dissolved oxygen profile, August, 2010.



Water Clarity

Water clarity has two main components: turbidity (suspended materials such as algae and silt) and true color (materials dissolved in the water) (Shaw et al., 2004). Water clarity gives an indication of the overall water quality in a lake. Water clarity is typically measured using a Secchi disc (black and white disc) that is lowered into the water column on a tether. In simple terms, the depth at which the disc is no longer visible is recorded as the Secchi depth.

Figure 5 presents the July Secchi depths and demonstrates year to year variability. The mean Secchi disk reading was 12.4 feet (min of 7.7 and max of 19 feet), which indicates that Stateline Lake’s water clarity is “good” (Table 1). In August (Figure 6), the average Secchi reading was 7.9 feet (min of 1.02 and max of 13 feet) which would place Stateline Lake in a water clarity classification of “fair.” In September (Figure 7), the average Secchi reading was 8.3 feet.

Table 1. Water clarity index (Shaw et al., 2004).

Water clarity	Secchi depth (ft.)
Very poor	3
Poor	5
Fair	7
Good	10
Very good	20
Excellent	32

Figure 5. Stateline Lake July Secchi Depth.

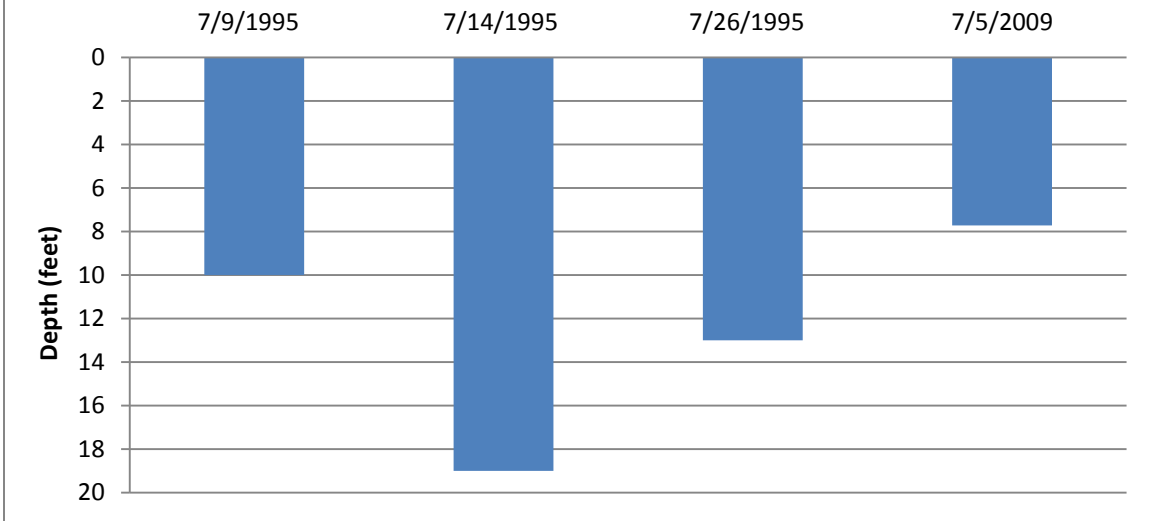
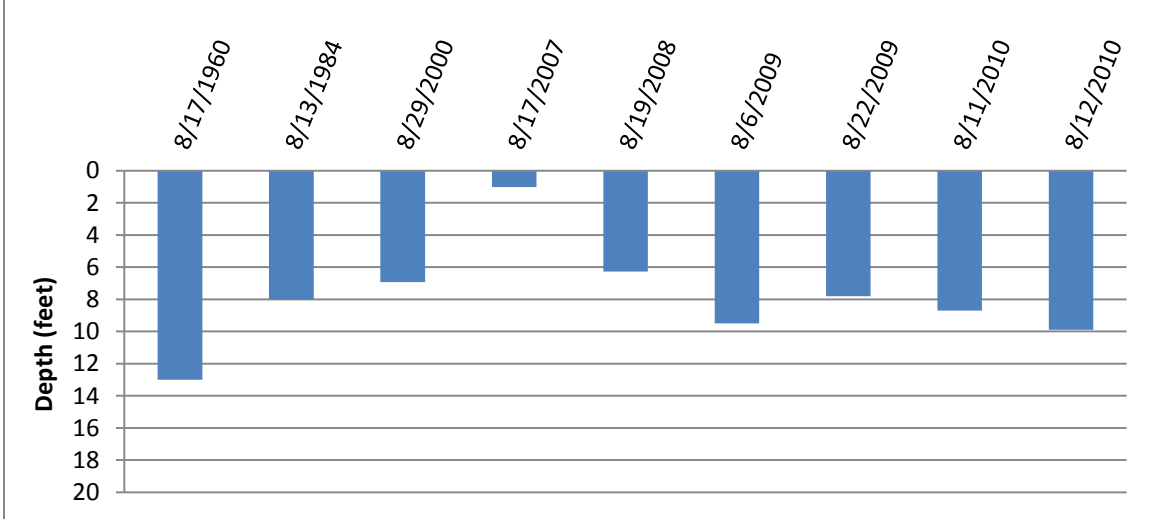
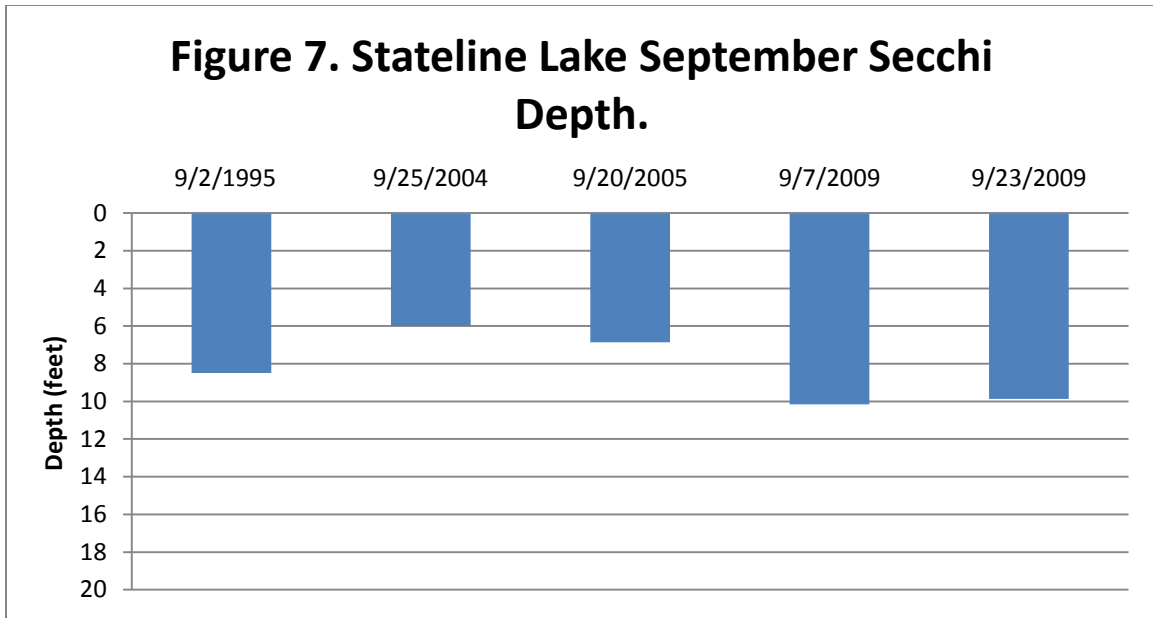


Figure 6. Stateline Lake August Secchi Depth.





Turbidity

Turbidity is another measure of water clarity, but is caused by suspended particulate matter rather than dissolved organic compounds (Shaw et al., 2004). Particles suspended in the water dissipate light and reduce the depth to which the light can penetrate. This affects the depth at which plants can grow. Turbidity also affects the aesthetic quality of water. Water that runs off the watershed into its lake can increase turbidity by introducing suspended materials. Turbidity caused by algae is the most common reason for low Secchi readings (Shaw et al., 2004). In terms of biological health of a lake ecosystem, measurements less than 10 Nephelometric Turbidity Units (NTU) represent healthy conditions for fish and other organisms. Turbidity has not been tested in Stateline Lake, but the CLMN said the water appeared “clear” on July 26, 1995.

Water Color

Color of lake water is related to the type and amount of dissolved organic chemicals. It is measured and reported as standard color units on filtered samples. Its main significance is aesthetics although it may also influence light penetration and in turn affect aquatic plant and algal growth. Many lakes have naturally occurring color compounds from decomposition of plant material in the watershed (Shaw et al., 2004). Shaw states that a water color between 0 and 40 units is low. Stateline Lake has not had color sampled in the past, but the CLMN took note of the water color appearance, and said that the lake was “brown” in July and September, 1995.

Water Level

When CLMN volunteers collect Secchi depth readings, they also record their perceptions of the lake level as “high,” “normal,” or “low.” Lake level data was not collected for Stateline Lake.

User Perceptions

When volunteers collect Secchi depth readings, they record their perceptions of the water based on the physical appearance and the recreational suitability. These perceptions can be compared to water quality parameters to see how the lake user would experience the lake at that time. When interpreting the transparency data, we see that when the Secchi depth decreases, the rating of the lake's physical appearance also decreases. In July 1995, the CLMN said Stateline Lake was "beautiful, could not be nicer." The same was said in September, 1995.

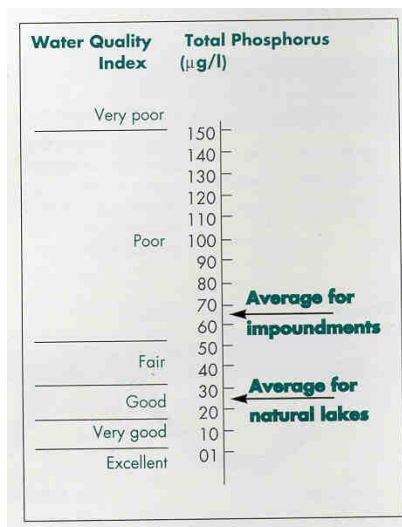
Chlorophyll *a*

Chlorophyll *a* is the photosynthetic pigment that makes plants and algae green. Chlorophyll *a* concentration in lake water is therefore an indicator of the amount of algae. Chlorophyll *a* concentrations greater than 10 µg/L are perceived as a mild algae bloom, while concentrations greater than 20 µg/L are perceived as a nuisance. Chlorophyll *a* has been monitored in Stateline Lake only a few times. In August, 1984, the chlorophyll *a* sample was 12 µg/L, and in August, 2010, it was 4.23 µg/L.

Phosphorus

In more than 80% of Wisconsin's lakes, phosphorus is the key nutrient affecting the amount of algae and plant growth. If phosphorus levels are high, excessive aquatic plant growth can occur. Phosphorus originates from a variety of sources, many of which are related to human activities. Major sources include human and animal wastes, soil erosion, detergents, septic systems and runoff from farmland or lawns (Shaw et al., 2004). Phosphorus provokes complex reactions in lakes. An analysis of phosphorus often includes both soluble reactive phosphorus and total phosphorus. Soluble reactive phosphorus dissolves in the water and directly influences plant growth (Shaw et al., 2004). Its concentration varies in most lakes over short periods of time as plants take it up and release it. Total phosphorus is considered a better indicator of a lake's nutrient status than soluble reactive phosphorus because its levels remain more stable (Shaw et al., 2004). Total phosphorus includes soluble phosphorus and the phosphorus in plant and animal fragments suspended in lake water. Ideally, soluble reactive phosphorus concentrations should be 10 µg/L or less at spring turnover to prevent summer algae blooms (Shaw et al., 2004). A concentration of total phosphorus below 20 µg/L for lakes should be maintained to prevent nuisance algal blooms (Shaw et al., 2004). On August 11, 2010, phosphorus concentration data for Stateline Lake had a value of 19 µg/L. Figure 8 indicates the water quality index under a range of phosphorus concentrations and shows that Stateline Lake is "good" with respect to phosphorus. Yearly samples should be taken to show any trends for total phosphorus.

Figure 8. Total phosphorus concentrations for Wisconsin’s natural lakes and impoundments (Shaw et al., 2004).



Trophic State

Trophic state is another indicator of water quality (Carlson, 1977). Lakes can be divided into three categories based on trophic state – oligotrophic, mesotrophic, and eutrophic. These categories reflect a lake’s nutrient and clarity levels (Shaw et al., 2004).

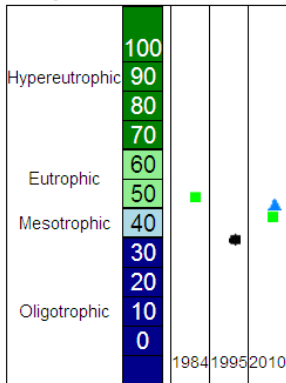
Trophic state was calculated by the WDNR using Secchi measurements in 1995, chlorophyll *a* in 1984, and both chlorophyll *a* and total phosphorus in 2010 (Figure 9). Stateline Lake is classified as “mesotrophic” to “mildly eutrophic” (Table 2).

30-40	Oligotrophic: clear, deep water; possible oxygen depletion in lower depths; few aquatic plants or algal blooms; low in nutrients; large game fish usual fishery
40-50	Mesotrophic: moderately clear water; mixed fishery, esp. panfish; moderate aquatic plant growth and occasional algal blooms; may have low oxygen levels near bottom in summer
50-60	Mildly Eutrophic: decreased water clarity; anoxic near bottom; may have heavy algal bloom and plant growth; high in nutrients; shallow eutrophic lakes may have winterkill of fish; rough fish common
60-70	Eutrophic: dominated by blue-green algae; algae scums common; prolific aquatic plant growth; high nutrient levels; rough fish common; susceptible to oxygen depletion and winter fishkill
70-80	Hypereutrophic: heavy algal blooms through most of summer; dense aquatic plant growth; poor water clarity; high nutrient levels

(WDNR, Sept 2012)

Figure 9. Stateline Lake Trophic State Index (1993-2011).

Trophic State Index Graph



Monitoring Station: Stateline Lake - Deep Hole, Vilas County
 Past Summer (July-August) Trophic State Index (TSI) averages.

• = Secchi ■ = Chlorophyll ▲ = Total Phosphorus	
TSI(Chl) = TSI(TP) = TSI(Sec)	It is likely that algae dominate light attenuation.
TSI(Chl) > TSI(Sec)	Large particulates, such as Aphanizomenon flakes dominate
TSI(TP) = TSI(Sec) > TSI(Chl)	Non-algal particulate or color dominate light attenuation
TSI(Sec) = TSI(Chl) >= TSI(TP)	The algae biomass in your lake is limited by phosphorus
TSI(TP) > TSI(Chl) = TSI(Sec)	Zooplankton grazing, nitrogen, or some factor other than phosphorus is limiting algae biomass

(WDNR, Sept 2012)

Researchers use various methods to calculate the trophic state of lakes. Common characteristics used to make the determination are: total phosphorus (important for algae growth), chlorophyll *a* concentration (a measure of the amount of algae present), and Secchi disc readings (an indicator of water clarity) (Shaw et al., 2004) (Table 3).

Table 3. Trophic classification of Wisconsin Lakes based on chlorophyll *a*, water clarity measurements, and total phosphorus values (Shaw et al., 2004).

Trophic class	Total phosphorus µg/L	Chlorophyll <i>a</i> µg/L	Secchi Disk (ft.)
Oligotrophic	3	2	12
	10	5	8
Mesotrophic	18	8	6
	27	10	6
Eutrophic	30	11	5
	50	15	4

Nitrogen

Nitrogen is second only to phosphorus as an important nutrient for aquatic plant and algae growth (Shaw et al., 2004). Human activities on the landscape greatly influence the amount of nitrogen in a lake.

Nitrogen may come from lawn fertilizer or septic systems near the lake or from agricultural activities in the watershed. Nitrogen may enter a lake from surface runoff or groundwater sources.

Nitrogen exists in lakes in several forms. Stateline Lake was analyzed for Nitrate-Nitrite in August, 2010, and it was not detected. Nitrogen is a major component of all organic (plant and animal) matter. Decomposing organic matter releases ammonia, which is converted to nitrate if oxygen is present (Shaw et al., 2004). All inorganic forms of nitrogen can be used by aquatic plants and algae (Shaw et al., 2004). If these inorganic forms of nitrogen exceed 0.3 mg/L (as N) in spring, there is sufficient nitrogen to support summer algae blooms (Shaw et al., 2004). Elevated concentrations of ammonium, nitrate, and nitrite, derived from human activities, can stimulate or enhance the development, maintenance and proliferation of primary producers (phytoplankton, benthic algae, macrophytes), contributing to the widespread phenomenon of the cultural (human-made) eutrophication of aquatic ecosystems (Camargo et al., 2007). The nutrient enrichment can cause important ecological effects on aquatic communities, since the overproduction of organic matter, and its subsequent decomposition, usually lead to low dissolved oxygen concentrations in bottom waters, and sediments of eutrophic and hypereutrophic aquatic ecosystems with low turnover rates (Camargo et al., 2007).

Chloride

The presence of chloride (Cl^-) where it does not occur naturally indicates possible water pollution (Shaw et al., 2004). Chloride does not affect plant and algae growth and is not toxic to aquatic organisms at most of the levels found in Wisconsin (Shaw et al., 2004). Because chloride concentrations were not collected in Stateline Lake, future water sampling should include measurement of this parameter.

Sulfate

Sulfate in lake water is primarily related to the types of minerals found in the watershed, and to acid rain (Shaw et al., 2004). Sulfate concentrations are noted to be less than 10 mg/L in Vilas County (Lillie and Mason, 1983). Because sulfate concentrations were not collected in Stateline Lake, future water sampling should include measurement of this parameter.

Conductivity

Conductivity is a measure of the ability of water to conduct an electric current. Conductivity is reported in micromhos per centimeter ($\mu\text{mhos/cm}$) and is directly related to the total dissolved inorganic chemicals in the water. Usually, values are approximately two times the water hardness unless the water is receiving high concentrations of human-induced contaminants (Shaw et al., 2004). Conductivity was measured in 1960 (63 $\mu\text{mhos/cm}$).

pH

The acidity level of a lake's water regulates the solubility of many minerals. A pH level of 7 is considered neutral. The pH level in Wisconsin lakes ranges from 4.5 in acid, bog lakes to 8.4 in hard water, marl lakes (Shaw et al., 2004). Natural rainfall in Wisconsin averages a pH of 5.6. Some minerals

become available under low pH (especially aluminum, zinc, and mercury) and can inhibit fish reproduction and/or survival. Mercury and aluminum are not only toxic to many kinds of wildlife, but also to humans (especially those that eat tainted fish). The pH scale is logarithmic, so every 1.0 unit change in pH increases the acidity tenfold. Water with a pH of 6 is 10 times more acidic than water with pH of 7. A lake's pH level is important for the release of potentially harmful substances and affects plant growth, fish reproduction and survival. A lake with neutral or slightly alkaline pH is a good lake for fish and plant survival. Stateline Lake is alkaline with a pH of 7.4, taken in 1960.

Alkalinity

Alkalinity levels in a lake are affected by the soil minerals, bedrock type in the watershed, and frequency of contact between lake water and these materials (Shaw et al., 2004). Alkalinity is important in a lake to buffer the effects of acidification from the atmosphere. Acid rain has long been a problem with lakes that have low alkalinity levels and high potential sources of acid deposition. Alkalinity was measured in 1960, with a value of 53 mg/L CaCO₃. Based on this value, Stateline Lake is not sensitive to acid rain, although new samples should be collected (Table 4).

<i>Sensitivity to acid rain</i>	<i>Alkalinity value (mg/L or ppm CaCO₃)</i>
High	0-2
Moderate	2-10
Low	10-25
Non-sensitive	>25

Hardness

Hardness levels in a lake are affected by the soil minerals, bedrock type in the watershed, and frequency of contact between lake water and these materials (Shaw et al., 2004). One method of evaluating hardness is to test for calcium carbonate (CaCO₃). Because hardness concentrations were not collected in Stateline Lake, future water sampling should include measurement of this parameter.

Calcium and Magnesium Hardness

The carbonate system provides acid buffering through two alkaline compounds: bicarbonate and carbonate. These compounds are usually found with two hardness ions: calcium and magnesium (Shaw et al., 2004). Calcium is the most abundant cation found in Wisconsin lakes. Its abundance is related to the presence of calcium-bearing minerals in the lake watershed (Shaw et al., 2004). Aquatic organisms such as native mussels use calcium in their shells. The aquatic invasive zebra mussel tends to need calcium levels greater than 20 mg/L to maintain shell growth. Stateline Lake had a borderline calcium level of 16.4 mg/L, which is an indication that zebra mussels could flourish. Magnesium concentrations were not collected in Stateline Lake, so future water sampling should include measurement of this parameter.

Sodium and Potassium

Sodium and potassium are possible indicators of human pollution in a lake, since naturally occurring levels of these ions in soils and water are very low. Sodium is often associated with chloride and gets into lakes from road salting, fertilizations, and human and animal waste (Shaw et al., 2004). Potassium is the key component of commonly-used potash fertilizer, and is abundant in animal waste. Both of these elements are held by soils to a greater extent than is chloride or nitrate; therefore, they are not as useful as indicators of pollution impacts (Shaw et al., 2004). Although not normally toxic themselves, they provide a strong indication of possible contamination by more damaging compounds (Shaw et al., 2004). Because sodium and potassium concentrations were not collected in Stateline Lake, so future water sampling should include measurement of this parameter.

Dissolved Organic Carbon

Dissolved Organic Carbon (DOC) is a food supplement, supporting growth of microorganisms, and plays an important role in global carbon cycle through the microbial loop (Kirchman et al., 1991). In general, organic carbon compounds are a result of decomposition processes from dead organic matter such as plants. When water contacts highly organic soils, these components can drain into rivers and lakes as DOC. DOC is also extremely important in the transport of metals in aquatic systems. Metals form extremely strong complexes with DOC, enhancing metal solubility while also reducing metal bioavailability. Baseflow concentrations of DOC in undisturbed watersheds generally range from 1 to 20 mg/L carbon. Dissolved organic carbon was not tested in Stateline Lake. Future water sampling should include this parameter.

Silica

The earth's crust is abundant with silicates or other compounds of silicon. The water in lakes dissolves the silica and pH can be a key factor in regulating the amount of silica that is dissolved. Silica concentrations are usually within the range of 5 to 25 mg/L. Generally lakes that are fed by groundwater have higher levels of silica. Because silica concentrations were not collected in Stateline Lake, future water sampling should include measurement of this parameter.

Aluminum

Aluminum occurs naturally in soils and sediments. In low pH (acidic) environments aluminum solubility increases greatly. With a low pH and increased aluminum values, fish health can become impaired. This can have impacts on the entire food web. Aluminum also plays an important role in phosphorus cycling in lakes. When aluminum precipitates with phosphorus in lake sediments, the phosphorus will not dissolve back into the water column as readily. Aluminum was not tested in Stateline Lake. Future water sampling should include this parameter.

Iron

Iron also forms sediment particles that bind with and store phosphorus when dissolved oxygen is present. When oxygen concentration gets low (for example, in winter or in the deep water near sediments) the iron

and phosphorus dissolve in water. This phosphorus is available for algal blooms. Because iron levels are not known for Stateline Lake, future water sampling should include measurement of this parameter.

Manganese

Manganese is a mineral that occurs naturally in rocks and soil. In lakes, manganese is usually in particulate form. When the dissolved oxygen levels decrease, manganese can convert from an insoluble form to soluble ions. A manganese concentration of 0.05 mg/L can cause color and staining problems. Because manganese levels are not known for Stateline Lake, future water sampling should include measurement of this parameter.

Sediment

Lake bottom sediments are sometimes analyzed for chemical constituents that they contain. This is especially true for potentially toxic metals such as mercury, chromium, selenium, and others. Lake sediments also tend to record past events as particulates settle down and become part of the sediment. Biological clues for the historic conditions in the lake can be gleaned from sediment samples. Examples include analysis of pollen or diatoms that might help understand past climate or trophic states in the lake. Sediment data was not collected for Stateline Lake, and future sampling should include this parameter.

Total Suspended Solids

Total suspended solids are all particles suspended in lake water. Silt, plankton, and wastes are examples of these solids and can come from runoff of agricultural land, erosion, and can be produced by bottom-feeding fish. As the suspended solid levels increase, they absorb heat from sunlight which can increase the water temperature. They can also block the sunlight that plants need for photosynthesis. These events can in turn affect the amount of dissolved oxygen in the lake. Lakes with total suspended solids levels less than 20 mg/L are considered “clear,” while levels between 40 and 80 mg/L are “cloudy.” Total suspended solids have not been tested in Stateline Lake. Future water quality sampling should include this parameter.

Aquatic Invasive Species

The rusty crayfish (*Orconectes rusticus*) was found on July 7, 2011 in Stateline Lake, Vilas County, and it was confirmed by the WDNR. An AIS incident report was completed and entered into the SWIMS database. The specimen is located at the University of Wisconsin Zoological Museum. According to the University of Wisconsin-Madison’s Aquatic Invasive Species Smart Prevention program, Stateline Lake is classified as “Borderline Suitable” for zebra mussels, based on calcium and conductivity levels found in the lake (UW-Madison).

Resources

Black, J.J., M. A. Lloyd & C.W. Threinen. 1963. *Surface water resources of Vilas County*. Wis. Cons. Dept. Madison, WI.

Camargo, Julio A., Álvaro Alonso (Lead Author); Raphael D. Sagarin (Topic Editor). 02 April 2007. *Inorganic nitrogen pollution in aquatic ecosystems: causes and consequences*. In: Encyclopedia of Earth. Eds. Cutler J. Cleveland (Washington, D.C.: Environmental Information Coalition, National Council for Science and the Environment). Retrieved January 24, 2012.
<http://www.eoearth.org/article/Inorganic_nitrogen_pollution_in_aquatic_ecosystems:_causes_and_consequences>

Carlson, R.E. 1977. *A Trophic State Index for Lakes*. *Limnology and Oceanography*. 22: 361-369.

Kirchman, David L.; Suzuki, Yoshimi, Garside, Christopher, Ducklow, Hugh W. (15). 1991. *High turnover rates of dissolved organic carbon during a spring phytoplankton bloom*. *Nature* 352 (6336): 612–614. Doi:10.1038/352612a0. Retrieved 2012.
<<http://www.nature.com/nature/journal/v352/n6336/abs/352612a0.html>>

Lillie, R. A. and J. W. Mason. 1983. *Limnological Characteristics of Wisconsin Lakes*. Wis. Dept. of Natural Resources Tech. Bull. Page 138. Madison, WI.

Shaw, B. Mechenich, C, and Klessig, L. 2004. *Understanding Lake Data (G3582)*. Board of Regents of the University of Wisconsin System. Madison, WI.

University of Wisconsin-Madison, Center for Limnology, Vander Zanden Lab. 2009. *Aquatic Invasive Species Smart Prevention*. Retrieved 2013. <<http://www.aissmartprevention.wisc.edu/>>

Wisconsin Department of Natural Resources. 10 Sept 2012. *Surface Water Integrated Monitoring Systems (SWIMS) Database*. Retrieved 2012. <<http://dnr.wi.gov/topic/surfacewater/swims/>>