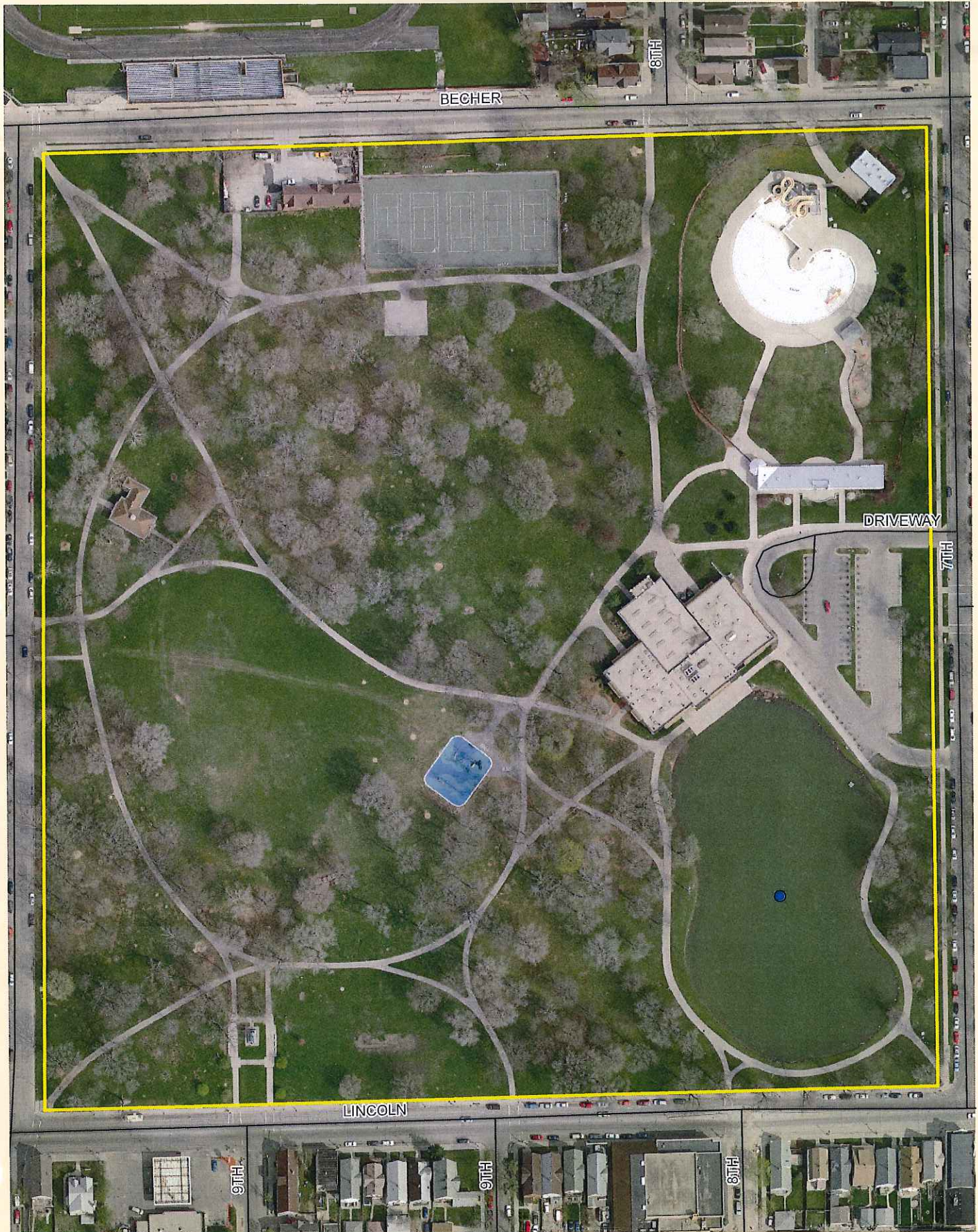
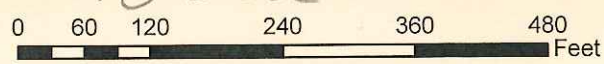


# Kosciuszko Park



$2.3 \div 0.1 = 23 \div 4 = 5.75$  clear

28.75 zero

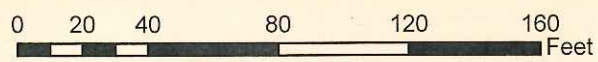
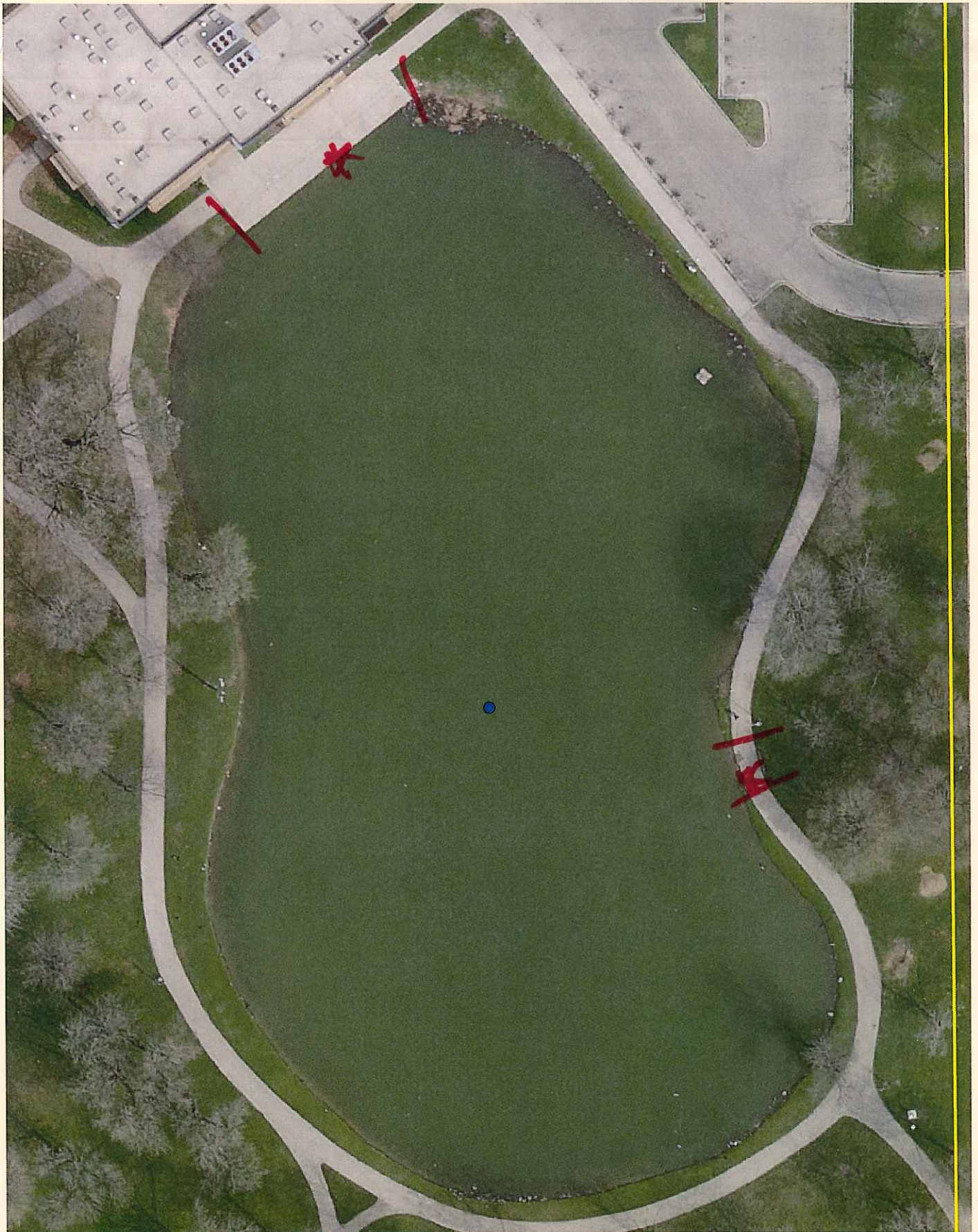


17.25 med



# Kosciuszko Park Pond

**\* FISHING**









		Ring	Density									Total # of rings	Mean density
		Ring	Density									Total # of rings	Mean density
		Ring	Density									Total # of rings	Mean density
		Ring	Density									Total # of rings	Mean density
		Ring	Density									Total # of rings	Mean density
		Ring	Density									Total # of rings	Mean density

### Crayfish Monitoring

Date traps initially set \_\_\_\_\_

For each date the trap is checked write the number of Rusty Cray Fish (RC) and the number of Red Swamp Crayfish (RSC) found in each trap

Total RC	
Total RSC	

Dates checked	RC	RSC	RC	RSC	RC	RSC	RC	RSC	RC	RSC	RC	RSC	RC	RSC
Trap 1														
Trap 2														
Trap 3														
Trap 4														
Trap 5														
Trap 6														
Trap 7														
Trap 8														
Trap 9														
Trap 10														

Data entered into SWIMS on \_\_\_\_\_  
by \_\_\_\_\_

### Density Ratings

- 1 - A few plants or invertebrates
- 2 - One or a few plant beds or colonies of invertebrates
- 3 - Many small beds or scattered plants or colonies of invertebrates
- 4 - Dense plant, snail or mussel growth in a whole bay or portion of the lake
- 5 - Dense plant, snail or mussel growth covering most shallow areas

### Comments

Water hyacinth  
Brazilian water hyacinth  
Soft water hyacinth  
3 Willow sedge  
Cottonwood  
Red pine willow  
Cane  
Spice bush  
Cane maple  
W. Water hyacinth  
Smartweed  
Mallard  
Snapping Turtle