

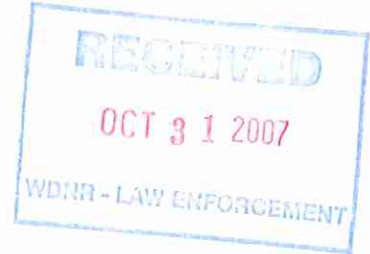
MOTORBOAT PROHIBITION
ORDINANCE

A SOLE ORDINANCE TO REGULATE BOATING UPON THE WATERS OF
Jacqueline Lake AND PRESCRIBING PENALTIES FOR VIOLATIONS THEREOF.

The Town Board of the Town of Sharon do ordain as follows:

Section I. Applicability and Enforcement

- (a) The provisions of this Ordinance shall apply to the waters of Jacqueline Lake.
- (b) This chapter shall be enforced by the officers of the Town of Sharon.



Section II Intent

The intent of this ordinance is to provide safe and healthful conditions for the enjoyment of aquatic recreation consistent with public rights and interests, and the capability of the water resources.

Section III State Boating and Safety Laws Adopted

State boating laws as found in ss. 30.50 to 30.71, Wis. Stats., are adopted by reference.

Section IV Motor Boat Prohibited Area

No person shall operate a motorboat, as defined in 30.50(6), Wisconsin Statutes, that is propelled by internal combustion engine or engines on the waters of Jacqueline Lake. Electric motors only are permitted on said waters. An exception to the no internal combustion engines are, LE, Rescue, DNR survey crews, and weed harvesting equipment.

Section V Posting Requirements

The Town of Sharon shall place and maintain a synopsis of this ordinance at all public Access points within the jurisdiction of the Township pursuant to the requirements of NR 5.15 Wis. Admin. Code.

Section VII Penalties

Wisconsin state boating penalties as found in Wis. Stat. 30.80, and deposits as established in the Uniform Deposit and Bail Schedule established by the Wisconsin Judicial Conference, are hereby adopted by reference and all references to fines amended to forfeitures and all references to imprisonment deleted.

Section VIII Severability

The provisions of this Ordinance shall be deemed severable and it is expressly declared that the Town Board would have passed the other provisions of this ordinance irrespective of whether or not one or more provisions may be declared invalid. If any provision of this ordinance or the application to any person or circumstances is held invalid, the remainder of the ordinance and the application of such provisions to other persons or circumstances shall not be affected.

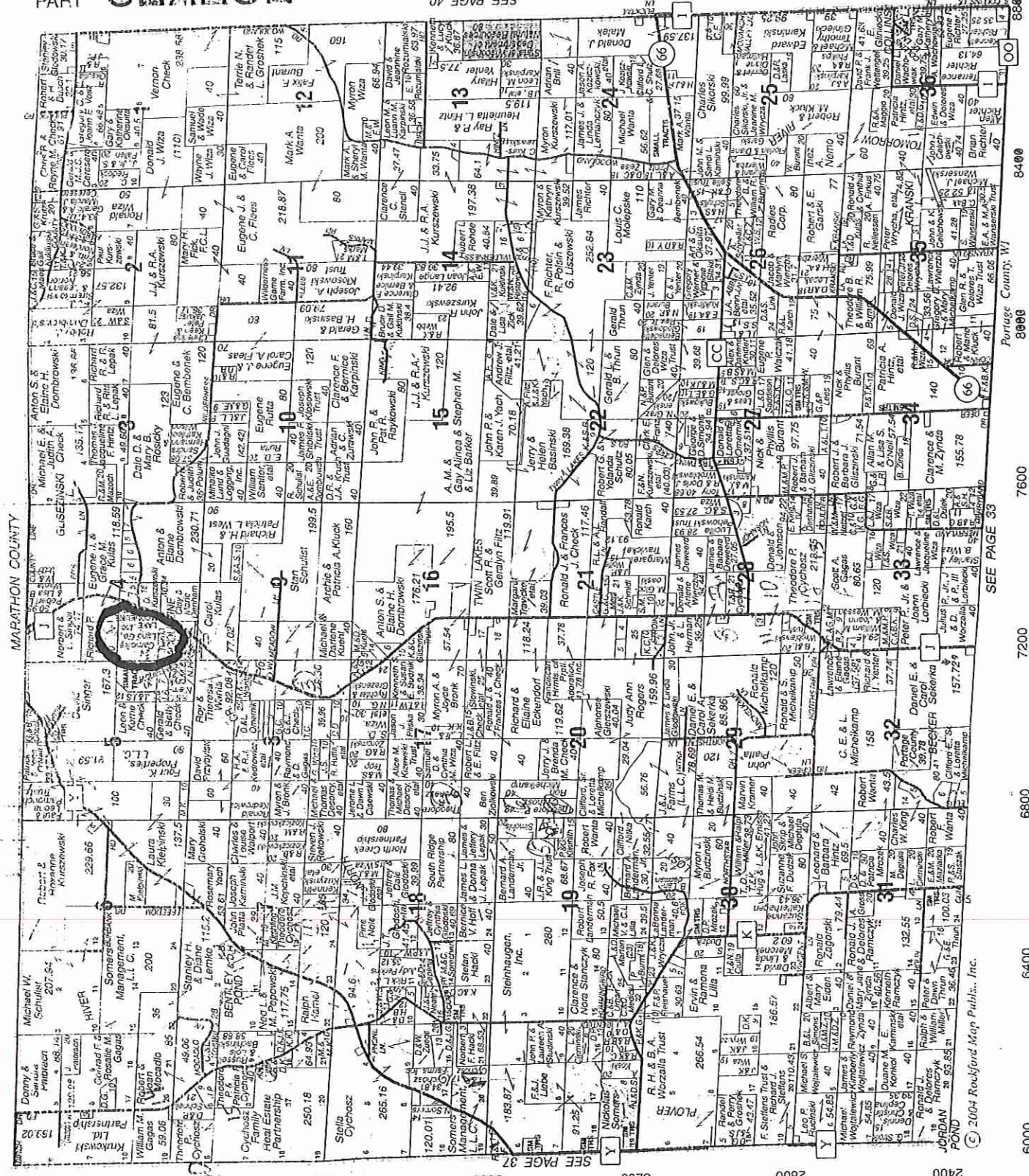
Section IX Effective Date

This section will become effective upon passage and the day after publication.

Passed this _____ day of _____, 20__.

Pat Wanserski, Town of Sharon Chairperson

(Signature of Chairperson)



4800 4400 4000 3600 3200 2800 2400

SEE PAGE 37

SEE PAGE 33

SEE PAGE 32

SEE PAGE 31

SEE PAGE 30

SEE PAGE 29

SEE PAGE 28

SEE PAGE 27

SEE PAGE 26

SEE PAGE 25

SEE PAGE 24

SEE PAGE 23

SEE PAGE 22

SEE PAGE 21

SEE PAGE 20

SEE PAGE 19

SEE PAGE 18

SEE PAGE 17

SEE PAGE 16

SEE PAGE 15

SEE PAGE 14

SEE PAGE 13

SEE PAGE 12

SEE PAGE 11

SEE PAGE 10

SEE PAGE 9

SEE PAGE 8

SEE PAGE 7

SEE PAGE 6

SEE PAGE 5

SEE PAGE 4

SEE PAGE 3

SEE PAGE 2

SEE PAGE 1

SEE PAGE 0

SEE PAGE 6000

SEE PAGE 6400

SEE PAGE 6800

SEE PAGE 7200

SEE PAGE 7600

SEE PAGE 8000

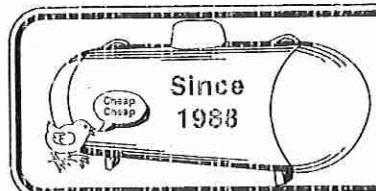
SEE PAGE 8400

SEE PAGE 8800

SEE PAGE 9200

SEE PAGE 9600

SEE PAGE 10000



L & L Propane

800-924-5975

Lock-in Price
Budget Plan
Keep Fill
Sell Tanks
Lease Tanks

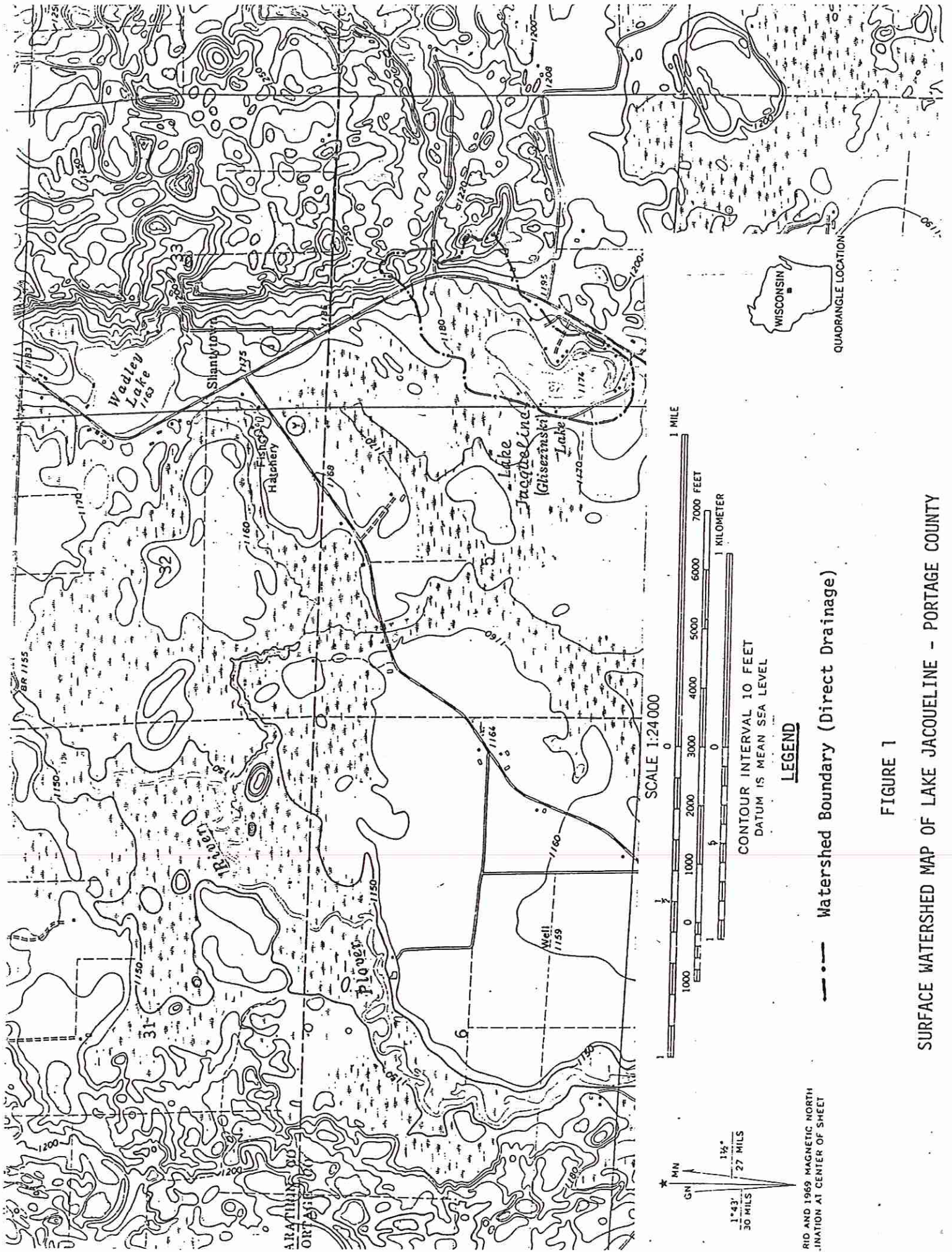


FIGURE 1

SURFACE WATERSHED MAP OF LAKE JACQUELINE - PORTAGE COUNTY

Executive Summary

Jacqueline Lake is a shallow mesotrophic lake with fair water quality. No filamentous algae was seen during the July 2006 study.

The aquatic plant community colonized nearly the entire littoral zone, more than half of the total lake area, to a maximum depth of 9.5 feet. The 0-1.5 ft. depth zone supported the most abundant aquatic plant growth. The aquatic plant community in Jacqueline Lake is a soft water community characterized by average-to-above average quality, good species diversity, a high intolerance to disturbance and a condition close to an undisturbed condition.

Utricularia purpurea (purple bladderwort) was the dominant species within the Jacqueline Lake aquatic plant community, especially in the 1.5-12ft depth zones, occurring at more than three-quarters of the sample sites and exhibiting a dense growth form. *U. purpurea* is listed as a Special Concern Species. *Nymphaea odorata* (white water lily) was the sub-dominant species, occurring at approximately half of the sites and at an above average density. Another listed Special Concern Species was commonly occurring in Jacqueline Lake, *Eleocharis robbinsii* (Robbin's spikerush).

A healthy aquatic plant community plays a vital role within the lake community. This is due to the role plants play in improving water quality, providing valuable habitat resources for fish and wildlife, resisting invasions of non-native species and checking excessive growth of tolerant species that could out-compete sensitive species, thus reducing diversity.

Management Recommendations

- 1) Update management plan for Jacqueline Lake, based on 2006 plant study and Critical Habitat Area Designations.
- 2) Lake property owner preserve the natural shoreline cover that occurs on three-quarters of Jacqueline Lake shoreline.
- 3) Restore natural shoreline buffers that have been cleared. Negative impacts to the aquatic plant community were measured at developed shorelines using FQI. Disturbed shoreline aquatic plant communities were of lower quality provided less cover and less diverse habitat.
- 4) Lakes residents use best management practices on shoreland property to prevent nutrient enrichment and stormwater run-off to the lake.
- 5) Lake residents begin monitoring the water quality through the Citizen Lake Monitoring Program.
- 6) DNR to designate Critical Habitat Areas within Jacqueline Lake.
- 7) Lake District and DNR maintain exotic species educational signs at the landing.
- 8) Consider designating Jacqueline Lake as a slow-no-wake lake. Jacqueline is very susceptible to impacts from motor boats.
- 9) Do not resume chemical treatments for aquatic plant control in Jacqueline Lake.
- 10) If plant control is needed in Jacqueline Lake, continue with mechanical harvesting. In contrast to chemical treatments, it appears that harvesting has improved water quality in Jacqueline Lake.
- 11) Leave bogs in place to protect the shoreline of the lake.