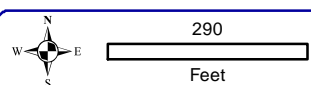
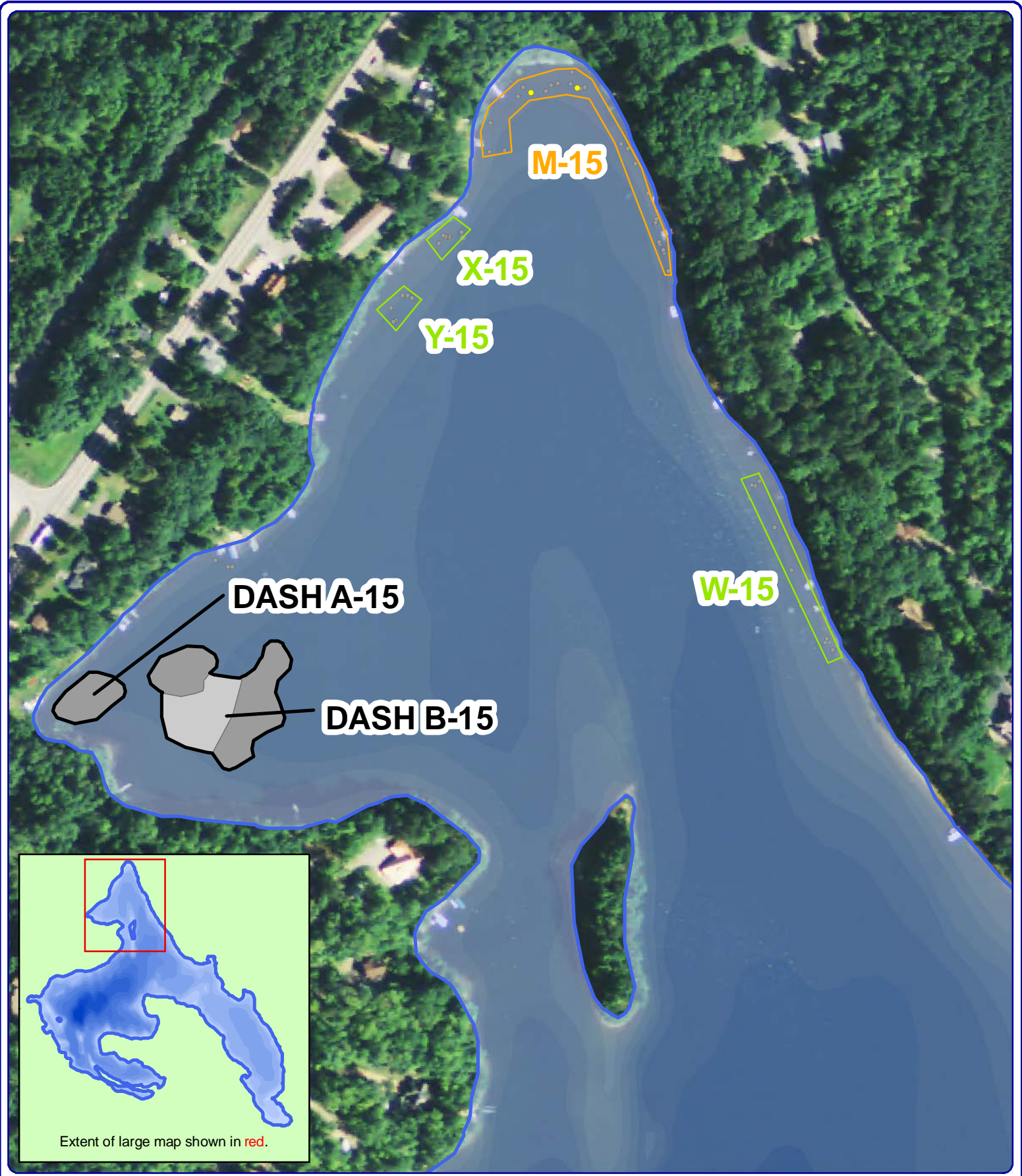


**Onterra LLC**  
 Lake Management Planning  
 135 South Broadway Suite C  
 De Pere, WI 54115  
 920.338.8860  
 www.onterra-eco.com

Source:  
 Hydro: WDNR  
 Bathymetry: WDNR 1972; digitized by Onterra  
 Orthophotography: NAIP, 2013  
 Map Date: May 31, 2015  
 Filename: Map1\_Squash\_EWM\_2015\_SLA\_Final\_West.mxd

| Legend                     |                            | 2015 Final SLA Hand Removal Area |
|----------------------------|----------------------------|----------------------------------|
| <b>Large EWM Community</b> | <b>Small EWM Community</b> | Primary Focus                    |
| Highly Scattered           | Single or Few              | Secondary Focus                  |
| Scattered                  | Clumps of Plants           | Tertiary Focus                   |
| Dominant                   | Small Plant Colony         |                                  |
| Highly Dominant            |                            |                                  |
| Surface Matting            |                            |                                  |

Map 1  
 Squash Lake: West  
 Oneida County, Wisconsin  
 May 2015 EWM  
 Locations & 2015 SLA  
 Hand-Removal Areas

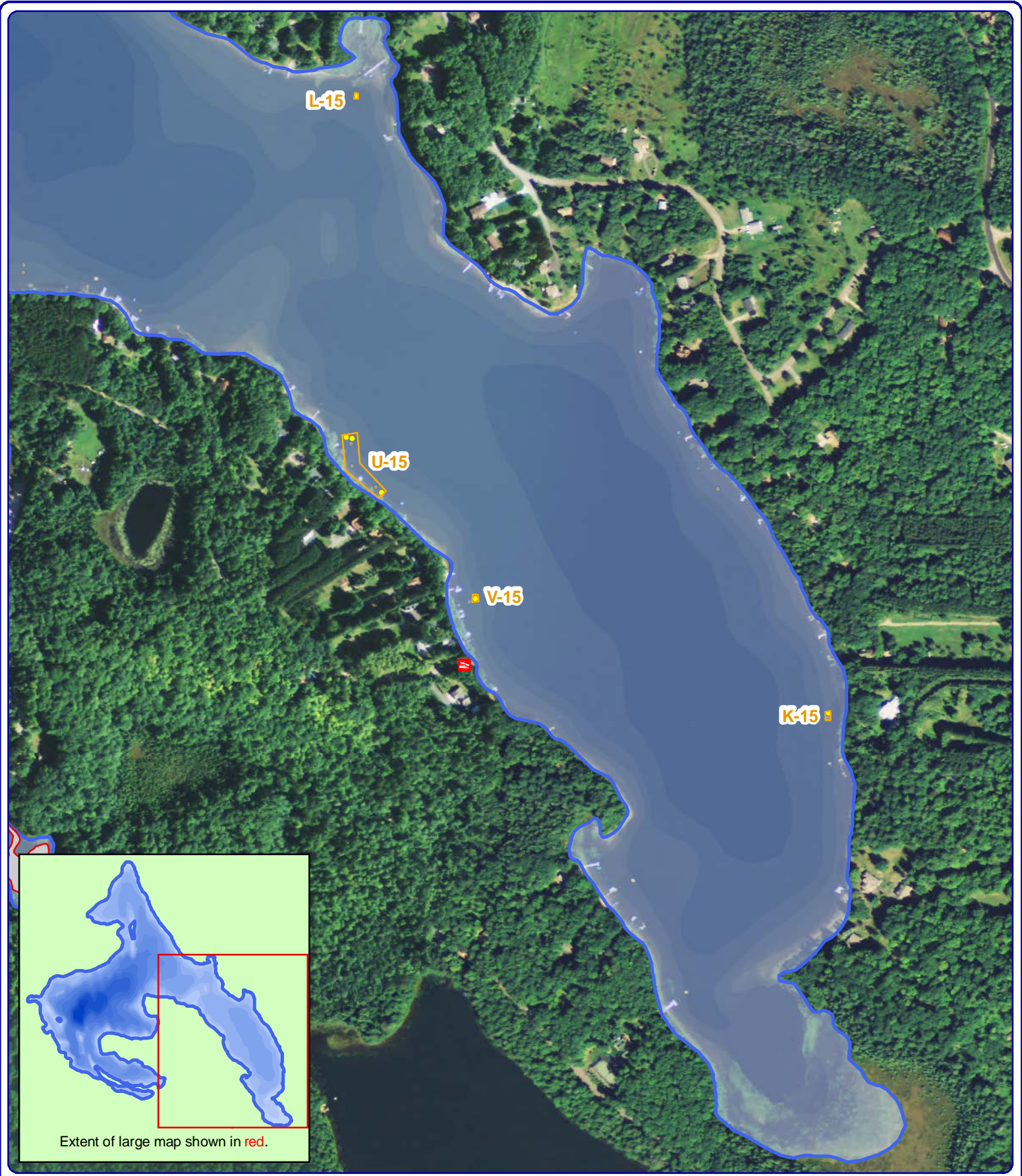


**Onterra LLC**  
 Lake Management Planning  
 135 South Broadway Suite C  
 De Pere, WI 54115  
 920.338.8860  
 www.onterra-eco.com

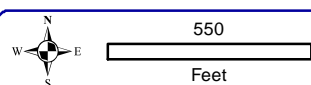
Sources:  
 Hydro: WDNR  
 Bathymetry: WDNR 1972; digitized by Onterra  
 Orthophotography: NAIP, 2013  
 Map Date: May 31, 2015  
 Filename: Map2\_Squash\_EWM\_2015\_SLA\_Final\_North.mxd

| Legend                     |                            | 2015 Final SLA Hand Removal Area |
|----------------------------|----------------------------|----------------------------------|
| <b>Large EWM Community</b> | <b>Small EWM Community</b> | Primary Focus                    |
| Highly Scattered           | Single or Few              | Secondary Focus                  |
| Scattered                  | Clumps of Plants           | Tertiary Focus                   |
| Dominant                   | Small Plant Colony         |                                  |
| Highly Dominant            |                            |                                  |
| Surface Matting            |                            |                                  |

Map 2  
 Squash Lake: North  
 Oneida County, Wisconsin  
 May 2015 EWM  
 Locations & 2015 SLA  
 Hand-Removal Areas



Extent of large map shown in red.



**Onterra LLC**  
 Lake Management Planning  
 135 South Broadway Suite C  
 De Pere, WI 54115  
 920.338.8860  
 www.onterra-eco.com

Sources:  
 Hydro: WDNR  
 Bathymetry: WDNR 1972; digitized by Onterra  
 Orthophotography: NAIP, 2013  
 Map Date: May 31, 2015  
 Filename: Map3\_Squash\_EWM\_2015\_SL\_A\_Final\_East.mxd

| Legend                     |                            | 2015 Final SLA Hand Removal Area |
|----------------------------|----------------------------|----------------------------------|
| <b>Large EWM Community</b> | <b>Small EWM Community</b> | Primary Focus                    |
| Highly Scattered           | Single or Few              | Secondary Focus                  |
| Scattered                  | Clumps of Plants           | Tertiary Focus                   |
| Dominant                   | Small Plant Colony         |                                  |
| Highly Dominant            |                            |                                  |
| Surface Matting            |                            |                                  |

**Map 3**  
**Squash Lake: East**  
 Oneida County, Wisconsin  
**May 2015 EWM**  
**Locations & 2015 SLA**  
**Hand-Removal Areas**