

Wisconsin's Water Quality Restoration and Protection Prioritization Framework

Final

Clean Water Act Section 303(d) Long-Term Vision
Implementation of the Priority Goal for Total Maximum Daily
Load or Alternative Plan Development



Wisconsin Department of Natural Resources
Water Quality and Watershed Management Bureaus

July 27, 2015

Table of Contents

Introduction	2
Prioritization Minimum Elements.....	3
Description of Changes from Past Prioritization Scheme	3
Mechanism for Restoration Area Prioritization	4
Mechanism for Protection Area Prioritization	4
Factors Considered in Prioritization	5
Consideration of EPA National and Regional Priorities.....	6
Ongoing Restoration and Protection Planning Work.....	6
Approach for Changes to Priorities.....	7
Public Engagement Approach	7
Schedule for Updates	8
Priority Designations.....	8
Attachment 1: Map of Ecosystem Health Index scores and existing water quality restoration or protection plans.	9
Attachment 2: Map of Vulnerability Index scores and existing water quality restoration or protection plans.....	10
Attachment 3: Map of Level 1 and 2 water quality restoration priority areas (HUC-12 watersheds) and existing water quality restoration or protection plans.	11
Attachment 4. Map of Water quality protection priority areas (HUC-12 watersheds) and existing water quality restoration or protection plans.....	12
Attachment 5. Map of Nine Key Element Watershed Plan Areas (list of watershed names, plan type, and status are provided in Attachment 6).....	13
Attachment 6. List of Nine Key Element Plan Areas, including watershed name and code, Hydrologic Unit Code number, expiration date, and plan type	14
Attachment 7. List of Total Maximum Daily Load (TMDL) Restoration Plans, including EPA-approval year link to TMDL websites or approved plan.....	16
Attachment 8. List of Level 1 restoration plan HUC-12 areas (ongoing plan development) for EPA performance measure WQ-27	17
Attachment 9. List of Level 2 restoration plan HUC-12 areas identified by Aquatic Ecosystem Index scores	39
Attachment 10. List of Level 2 restoration plan HUC-12 areas identified by Wisconsin's Nutrient Strategy – top group phosphorus watersheds	48



Introduction

The Wisconsin Department of Natural Resources (WDNR) participated in the 2014 National Training Workshop on Clean Water Act (CWA) Section 303(d) Listing & TMDLs: Implementing the Prioritization Goal of the New Long-Term Vision. The assembled participants discussed approaches for implementing the Prioritization Goal of the Long-Term Vision for Assessment, Restoration, and Protection under the Clean Water Act Section 303(d) Program. This workshop was instrumental in kick-starting WDNR's engagement in the new CWA 303(d) Vision process and a reevaluation of water quality restoration and protection priorities. The following is the prioritization goal as stated in December 2013 CWA Section 303(d) Program Long-Term Vision:

"For the 2016 integrated reporting cycle and beyond, States review, systematically prioritize, and report priority watersheds or waters for restoration and protection in their biennial integrated reports to facilitate State strategic planning for achieving water quality goals."

The new CWA 303(d) Vision is about prioritizing the work that is most important to meet state water quality goals as states, tribes, territories, and EPA implement CWA 303(d) Program responsibilities with existing resources. It fosters opportunities for collaboration and integration with other Clean Water Act programs; with other programs within the agency; with other agencies; and between EPA and the states, tribes, and territories, all of which can help to strategically focus resources.

In addition to Total Maximum Daily Load (TMDL) analyses, the new Vision allows for consideration and use of other tools (as appropriate) , including protection plans and alternatives to TMDLs, to achieve applicable water quality standards, with TMDL development expected to continue to be a primary feature of the program. WDNR is not starting from scratch on prioritization; past prioritization schemes have been revamped to address lessons learned, new thinking, and alternative strategies to restoration and protection. There are many ways to prioritize waters and watersheds for restoration and protection, and the WDNR has developed a method that meets the Vision prioritization goal and allows for more focused utilization of limited staff and fiscal resources.

Recent changes to the CWA 303(d) Program measures better reflect progress in implementing the CWA 303(d) Program responsibilities consistent with the new Vision. The new US EPA 303(d) Program performance measure (WQ-27) tracks progress in developing TMDL and alternative restoration plans for priority impaired waters, and in some cases protection plans for priority healthy waters. The new US EPA 303(d) Program complementary measure (WQ-28) provides an opportunity for programs to receive credit for work that they are doing outside of priority areas as well as for activities leading up to completion of TMDLs or other alternative plans in priority areas. The priority areas identified in this framework will be used for reporting on these performance measures through federal fiscal year (FFY) 2022.



Prioritization Minimum Elements

Several minimum elements were identified by US EPA for inclusion in Wisconsin's TMDL/303(d) program prioritization framework. US EPA recognizes that states will address these elements differently, both in their framework documents and in practice. The purpose of including these minimum elements is to ensure that states develop a framework that the TMDL/303(d) program can provide to other state programs, partner agencies, and public stakeholders that explains and defends the prioritization choices made to apply limited state time and resources to one area versus another. The minimum elements include a description of the changes from past prioritization schemes, mechanism and factors considered in current prioritization scheme, consideration of EPA national and regional priorities, ongoing restoration and protection work, approach to changing priorities, public engagement, schedule for updates, and the current priority designations. The following sections describe how these minimum elements are addressed in Wisconsin's prioritization framework.

Description of Changes from Past Prioritization Scheme

CWA Section 303(d) requires each state to prioritize waterbodies identified on their [impaired waters list](#) for TMDL development. Past priority rankings were evaluated during each listing cycle to determine if TMDL development could be completed based on available staff and fiscal resources. Generally, the previous prioritization scheme assigned to a waterbody a ranking of "high" when a TMDL was in development, a ranking of "medium" when information was being gathered that could be used for future TMDL development, and a ranking of "low" when no information was available for TMDL development. In addition, previous prioritization schemes considered several factors in the ranking of each impaired waterbody for TMDL development, including availability of information for TMDL development, likelihood that water quality would respond to management actions, severity of the impairment, and public health concerns. These same factors are also considered in the current prioritization approach, but more as a secondary screening level as opposed to the main driver in selecting priority waters for restoration planning.

This prioritization framework takes a slightly different approach than past prioritization efforts. The primary change in the prioritization process is the incorporation of a systematic and objective modeling analysis that identifies watershed areas at a 12-digit Hydrologic Unit Code (HUC-12) scale experiencing the most ecological degradation and vulnerability to future degradation. Priority areas identified through this screening process were further reviewed by a WDNR team of experts to remove areas already addressed by a TMDL or alternative restoration or protection plans, or where water quality problems are not currently evident. This part of the process, while acknowledging the importance of an objective determination of priority, takes advantage of staff knowledge and experience. During this process, non-quantifiable indicators are considered, including ongoing water quality studies or restoration work, social/economic importance of the waterbody, or likelihood of stakeholder engagement.

The current approach also focuses planning efforts on two pollutants, total phosphorus (TP) and total suspended solids (TSS); whereas, past prioritization considered other pollutants, like mercury, to be a higher priority. While WDNR considers impairments



Wisconsin's Water Quality Restoration and Protection Prioritization Framework

caused by mercury and other toxics to be important pollutants of concern, TMDL and alternative watershed restoration planning approaches for which the prioritization framework was designed to address pollutants from diverse sources that are dispersed throughout a watershed. TP and TSS are two of the most common pollutants identified on Wisconsin's impaired waters list and often originate from a combination of point and nonpoint sources. Therefore, TP and TSS are the priority pollutants selected for the [303\(d\)/TMDL program's](#) prioritization effort. Sources of impairments caused by heavy metals or other toxic pollutants are often localized, legacy contamination and are being addressed primarily through other WDNR programs, such as the Great Lakes [Areas of Concern \(AOC\)](#); the [Wisconsin Pollutant Discharge Elimination System \(WPDES\) program](#); and the [Comprehensive Environmental Response, Compensation, and Liability Act \(CERCLA\)](#), commonly known as the Superfund Program.

Past prioritization processes did not specifically identify areas for protection, as opposed to restoration, as limited staff and fiscal resources were focused on impaired waters in need of restoration. Still, WDNR's lake and river protection program has funded the development and implementation of many protection plans over the past two decades. While a relatively small number of protection priority watersheds are identified in this framework, as compared to restoration priority watersheds, WDNR continues to endorse the use of water quality protection planning as a management tool for achieving the antidegradation provisions of Wisconsin's water quality standards to maintain or improve water quality of the state's high quality waters.

Mechanism for Restoration Area Prioritization

Level 1 Priority – Ongoing restoration planning. Level 1 priority areas were identified as areas where TMDLs are currently in development for pollutants of concern. On previous impaired waters lists (2014 list and prior), these waters were also assigned high priority for TMDL development. Two large-scale watershed projects, the Wisconsin River TMDL Project and the Upper Fox and Wolf Rivers TMDL Project, are underway that will address the priority pollutants of TP and TSS in all Level 1 priority areas. Continuation and completion of these ongoing restoration planning efforts remains a high priority for WDNR.

Level 2 Priority – Future restoration planning. The primary mechanism for identifying additional priority areas (watersheds) was the use of modeling tools to identify areas with predicted poor ecological health or high phosphorus yields and instream concentrations. The [Wisconsin Healthy Watersheds Assessment \(HWA\)](#) that was conducted, in part, through the US EPA's Healthy Watersheds Initiative identified watersheds that were designated Level 2 priority areas for the development of TP and TSS restoration plans. In addition to the priority areas identified using the HWA datasets, top group phosphorus priority areas from [Wisconsin's Nutrient Strategy](#) were incorporated as Level 2 priority areas for the development of restoration plans addressing sources of phosphorus.

Mechanism for Protection Area Prioritization

For this prioritization framework, watershed vulnerability was defined as the potential for future degradation of watershed processes and aquatic ecosystem health. The HWA



Wisconsin's Water Quality Restoration and Protection Prioritization Framework

Vulnerability Index was used to identify watersheds that are a priority for the development of protection plans for the pollutants TP and TSS.

Vulnerability can be driven by a variety of factors. The HWA Vulnerability Index considered the following attributes: climate change, land use change, and water use. Additional protection priority areas may be identified in future updates of the prioritization framework based on potential threats to water quality that were not considered in the HWA Vulnerability Index.

Factors Considered in Prioritization

WDNR used the HWA Ecosystem Health and Vulnerability Indices to identify high priority watershed areas for restoration and protection, respectively. Aquatic ecosystem health refers to several properties of streams, lakes, and wetlands that describe their structure and function. Eleven aquatic ecosystem health metrics were selected based on data availability, data quality, and the objectives of the assessment. The selected ecosystem metrics characterize the hydrology, habitat, geomorphology, water quality, and biological condition attributes of watershed health. The Ecosystem Health Index included the following metrics: total phosphorus, nitrate-nitrite, suspended sediment, lake clarity, aquatic insects, stream patch size, percent of streams that are canals/ditches, road crossing density, stream habitat rating, Reed Canary Grass-dominated wetlands, and stream flow "exchange" (an estimate of the difference between present-day and pre-development annual flow duration statistics).

Index scores for assessed catchments were aggregated up to a HUC-12 watershed scale. Maps of the Ecosystem Health and Vulnerability Index scores are in Attachments 1 and 2, respectively. The index scores were color-coded on these maps using a quartile scaling with darker colors indicating lower ecological condition and higher vulnerability. Those HUC-12 watersheds ranking in the top quartile (i.e., 25% of watersheds with lowest Ecosystem Health scores) were considered restoration plan priority areas. Those HUC-12 watersheds with both high Ecosystem Health scores (25% of watersheds with highest Ecosystem Health Index scores) and high Vulnerability scores (50% of watersheds with highest Vulnerability Index scores) were considered protection plan priority areas and were identified as Level 2 priority areas. Watersheds with existing EPA-approved TMDLs or nine-key element restoration or protection plans were excluded from the priority area designations.

Top group phosphorus watersheds identified by the state's Nutrient Strategy document were included as Level 2 priority areas for development of phosphorus reduction plans. These watersheds were selected based on [SPARROW model](#) incremental phosphorus yields and median stream concentrations of phosphorus monitored during the growing season. Top group phosphorus watersheds from the Nutrient Strategy that overlapped with Level 2 priority watersheds based on the HWA were assigned a Level 2 priority. Maps of the priority areas for the development of water quality restoration and protection plans can be found in Attachments 3 and 4, respectively.

Final selection of project areas for the development of restoration and protection plans will be a two-stage process. The first stage is based on the modeling approaches described above that objectively identify priority areas in need of restoration and



Wisconsin's Water Quality Restoration and Protection Prioritization Framework

protection. The second stage is to refine those areas using a variety of factors that use local expertise about individual watersheds. Factors to be considered in the selection of priority areas for which to develop restoration or protection plans include the following:

- Severity of observed water quality impairments
- Impairments that are a public health concern
- Likelihood of water quality improvement in response to management actions
- Ongoing water quality studies or restoration work
- Social / economic importance
- Stakeholder engagement and readiness

The presence/absence of point sources in a watershed will also be used to inform the selection of the appropriate type of restoration or protection plan to be developed (e.g., [nine key element restoration or protection plan](#), [adaptive management restoration plan](#), or [TMDL](#)). Priority areas with a blend of point and nonpoint sources of a priority pollutant may be best suited for adaptive management restoration plans or TMDLs, whereas priority areas with few or no point sources of pollution would be best candidates for nine key element restoration or protection plans.

Consideration of EPA National and Regional Priorities

WDNR collaborates with the US EPA on prioritization, recognizing the US EPA's priorities as an important factor in this process. In 303(d)/TMDL program framework, WDNR has identified TP and TSS as priority pollutants to be addressed by restoration and protection plans. The US EPA also has identified [nutrient pollution](#) as a key water quality challenge nationally and a priority for their agency.

WDNR has worked closely with US EPA national and regional staff during the priority setting process, incorporating feedback from US EPA and keeping them informed about our progress. WDNR will continue to consider how US EPA's priorities will fit within WDNR's prioritization framework and may make additional adjustments based on their feedback.

Changes to the federal Nonpoint Source (NPS) Program Grant Guidelines in April 2013 emphasize the importance of states updating their NPS management programs to ensure that CWA Section 319 funds are targeted to the highest priority watersheds and activities. State NPS management programs should include a strategy for prioritizing waters and watersheds in which to focus restoration and protection efforts. In addition, the NPS grant guidelines promote the integration of state TMDL and NPS Programs to align priorities and coordinate restoration of NPS-impaired waters. The WDNR is updating the state's *NPS Program Management Plan* for FFY 2016-2020 to incorporate this prioritization framework. In doing so, Wisconsin may progressively address identified watersheds impacted by NPS pollution by conducting more detailed watershed assessments, developing watershed-based plans, and implementing the plans.

Ongoing Restoration and Protection Planning Work

WDNR is currently working with multiple stakeholders in the development of TMDLs for the restoration of HUC-12 watersheds identified as Level 1 priority in this framework



Wisconsin's Water Quality Restoration and Protection Prioritization Framework

document. TMDLs are currently in development for Level 1 priority areas through the efforts of two large-scale watershed projects: 1) the Wisconsin River TMDL Project and 2) the Upper Fox and Wolf Rivers TMDL Project. Both of these studies are slated for completion before FFY 2022, which is the deadline for completion of restoration and protection plans for all top priority waters identified for reporting on the US EPA performance measure WQ-27.

As the Level 1 priority areas will be addressed with the completion of the Upper Wisconsin and Upper Fox/Wolf TMDLs, WDNR will work with external stakeholders and partners to complete additional restoration plans that address the priority pollutants of TP and TSS in the Level 2 priority areas identified in this framework. Plans developed in these areas of the state will be included in reporting on the US EPA performance measure WQ-28.

WDNR has also worked with partners to develop water quality protection plans. Waters in these areas are meeting water quality standards based on available information, but plans were developed to maintain or improve water quality into the future. Additional HUC-12 watershed areas have been identified as Level 2 priority areas for the development of protection plans.

Approach for Changes to Priorities

The prioritization plan represents the currently anticipated restoration/protection planning work load, including TMDL development, but it is subject to change depending on overall Department priorities and available resources.

Given that the impaired waters list is updated biennially, changes to these priority areas may occur. When new priorities are identified based on new information, WDNR will work with US EPA and stakeholders in determining whether to add priority areas or reevaluate previous priority designations.

Public Engagement Approach

For the Vision to be successfully implemented, an understanding of the Vision must be communicated to other CWA programs, other agencies, stakeholders, and the public. Stakeholder and public familiarity with (and interest in) the priority issue(s) or water(s) is key to their engagement. The development and implementation of Wisconsin's prioritization framework has included, and will continue to involve, several programs within the Water Quality and Watershed Management Bureaus, including Wisconsin Pollutant Discharge Elimination System (WPDES), Section 303(d)/TMDL, Water Quality Monitoring and Assessment, and Nonpoint Source (NPS) Programs.

This draft prioritization framework will be communicated to the public and input on the framework will be solicited during the public comment periods for the updated *NPS Program Management Plan* update and the draft 2016 Impaired Waters List to facilitate transparency and public engagement in the prioritization process. The final framework will be included in Wisconsin's 2016 Integrated Report of Water Quality to Congress and the updated NPS Management Plan. The draft and final framework document will be



Wisconsin's Water Quality Restoration and Protection Prioritization Framework

announced to the public via press release and GovDelivery mailings and made available to the public for review on [WDNR's website](#).

Schedule for Updates

WDNR will review and update the prioritization scheme, as needed, on even-numbered years and incorporate the updates in the state's biennial Integrated Report of Water Quality. Updates on this schedule will allow WDNR to adapt the framework to new information about current water quality conditions from each biennial statewide assessment, as well as incorporating public input during comment periods and evaluating the effectiveness of the current prioritization scheme.

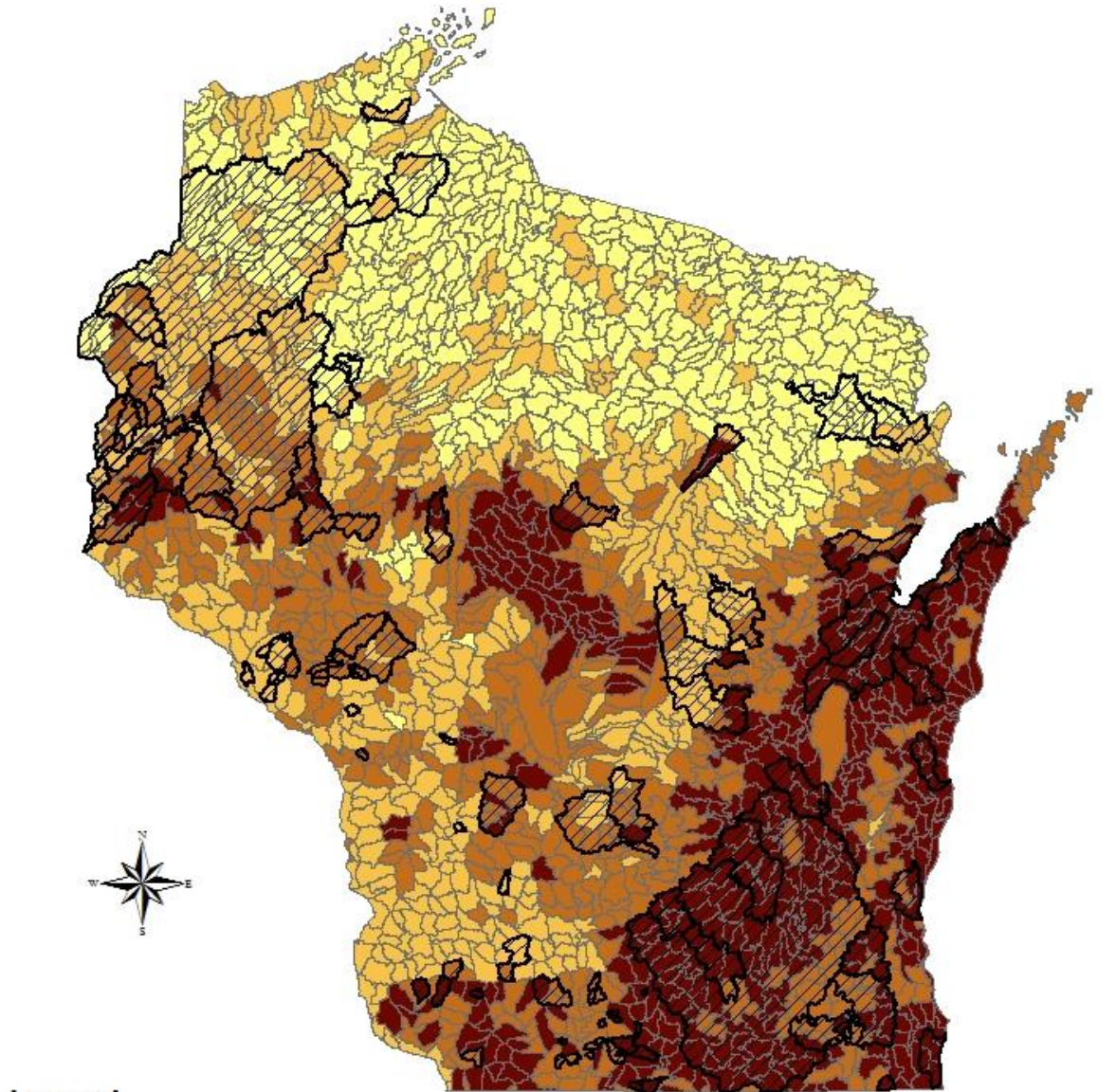
Priority Designations

The prioritization framework includes the process for selecting priority HUC-12 watersheds for the development of protection and restoration plans, as well as maps showing the locations of these areas (Attachments 3 and 4) and lists of the priority area HUC-12 watersheds (Attachments 8, 9, and 10). Level 1 priority areas are the waterbodies to be tracked in Measure WQ-27 for the priority pollutants of total phosphorus and total suspended solids.


Both the process and selected priority areas will be vetted by the public. After the framework document has been reviewed and finalized, any changes to the priority areas identified in this draft will be summarized and included in the final framework with updated lists of priority areas and maps, as needed.



Attachment 1: Ecosystem Health Index scores and existing water quality restoration or protection plans.







Legend

 Areas with Existing EPA-approved Plans

0 20 40 80 Miles

Area-weighted Aquatic Ecosystem Health Score

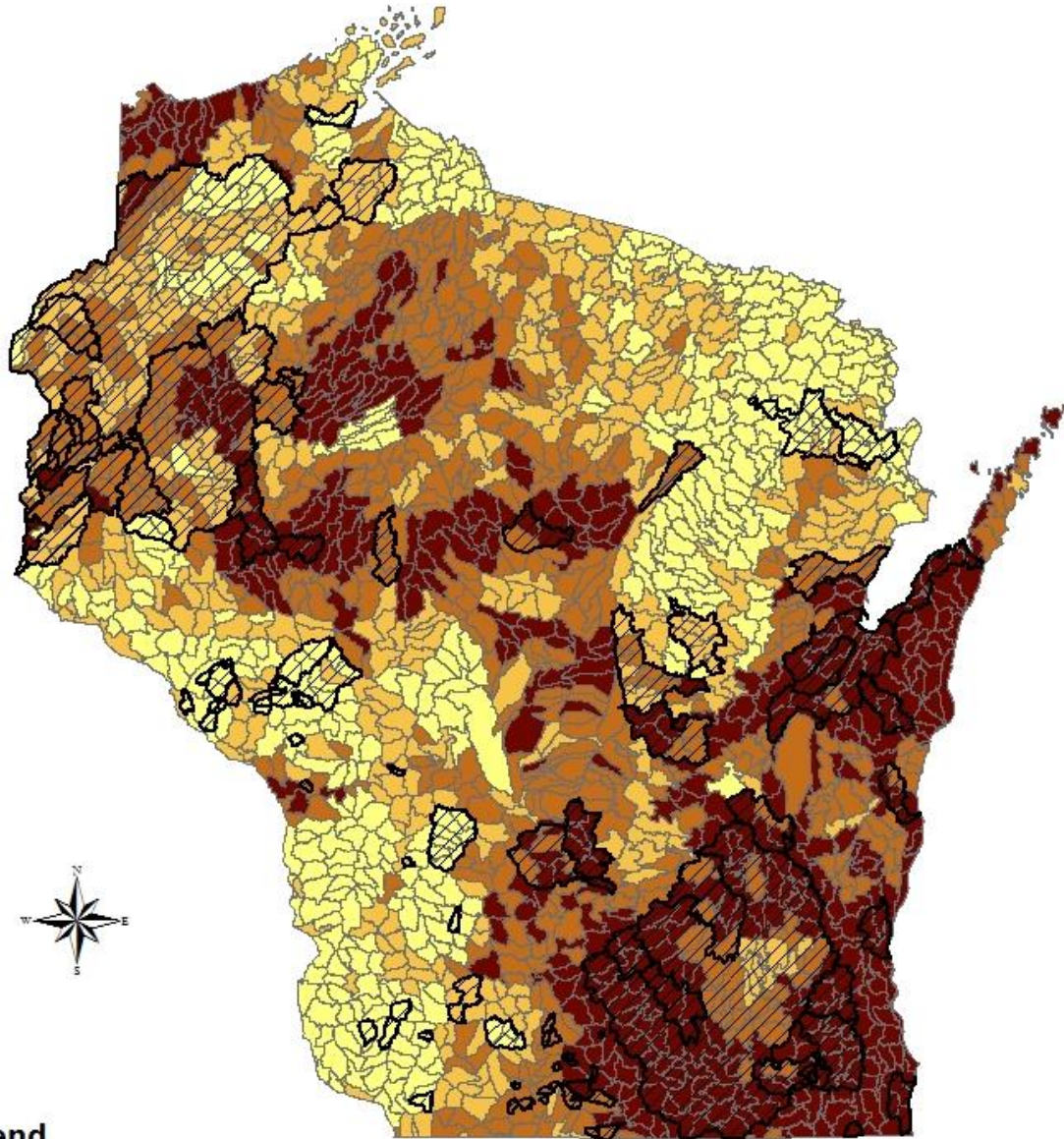
-  Poor (lower quartile)
-  Fair (25th-50th percentile)
-  Good (50th-75th percentile)
-  Excellent (upper quartile)

Aquatic ecosystem health refers to several properties of streams, lakes, and wetlands that describe their structure and function. Eleven aquatic ecosystem health metrics were selected based on data availability, data quality, and the objectives of the assessment.


The selected metrics characterize the hydrology, habitat, geomorphology, water quality, and biological condition attributes of watershed health.




Attachment 2: Vulnerability Index scores and existing water quality restoration or protection plans.



Legend

 Areas with Existing EPA-approved Plans

0 20 40 80 Miles


HUC-12 Watersheds

Area-weighted Vulnerability Index

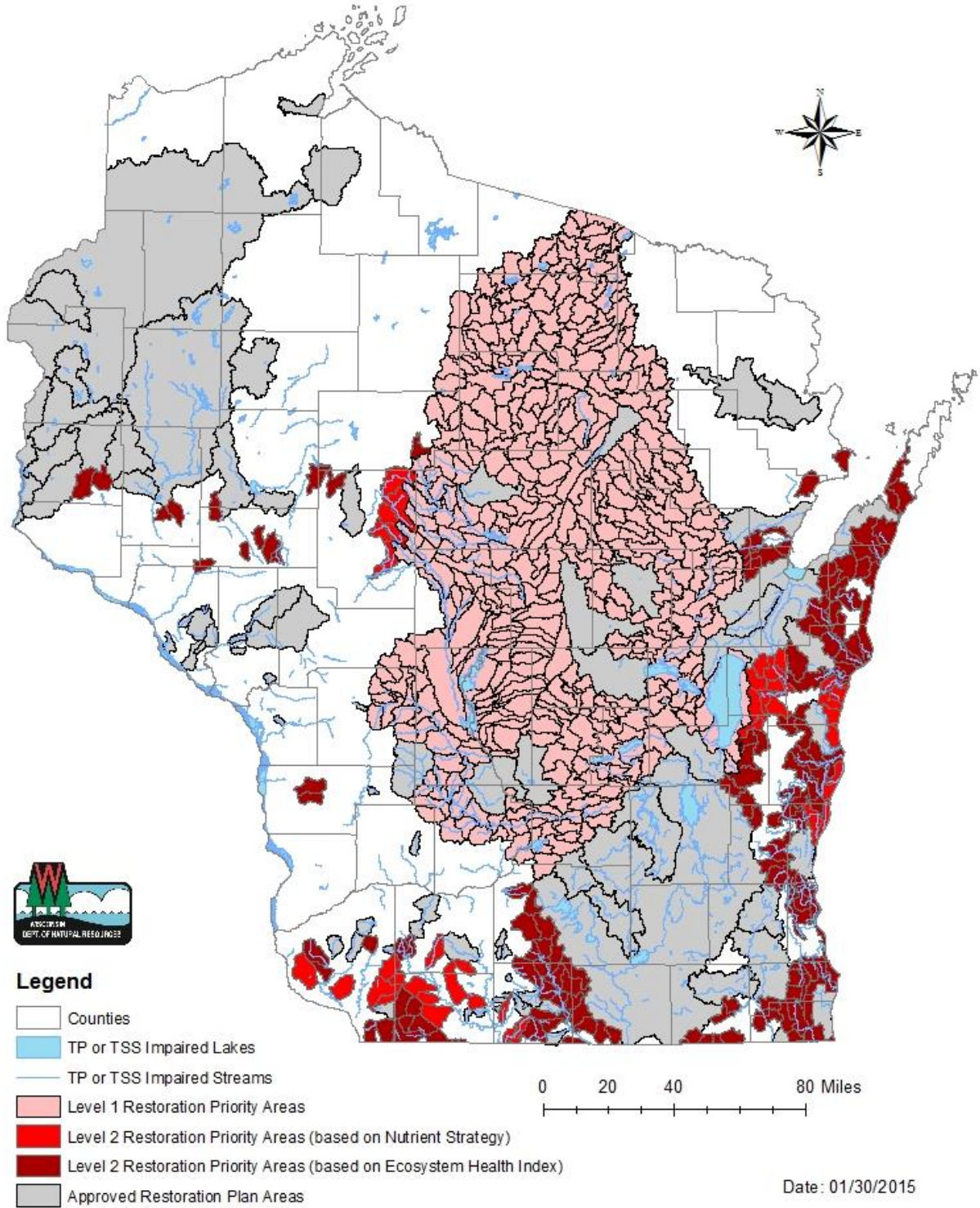
-  Lowest Vulnerability
-  Low Vulnerability
-  Higher Vulnerability
-  Highest Vulnerability

Aquatic ecosystem health refers to several properties of streams, lakes, and wetlands that describe their structure and function. Eleven aquatic ecosystem health metrics were selected based on data availability, data quality, and the objectives of the assessment.

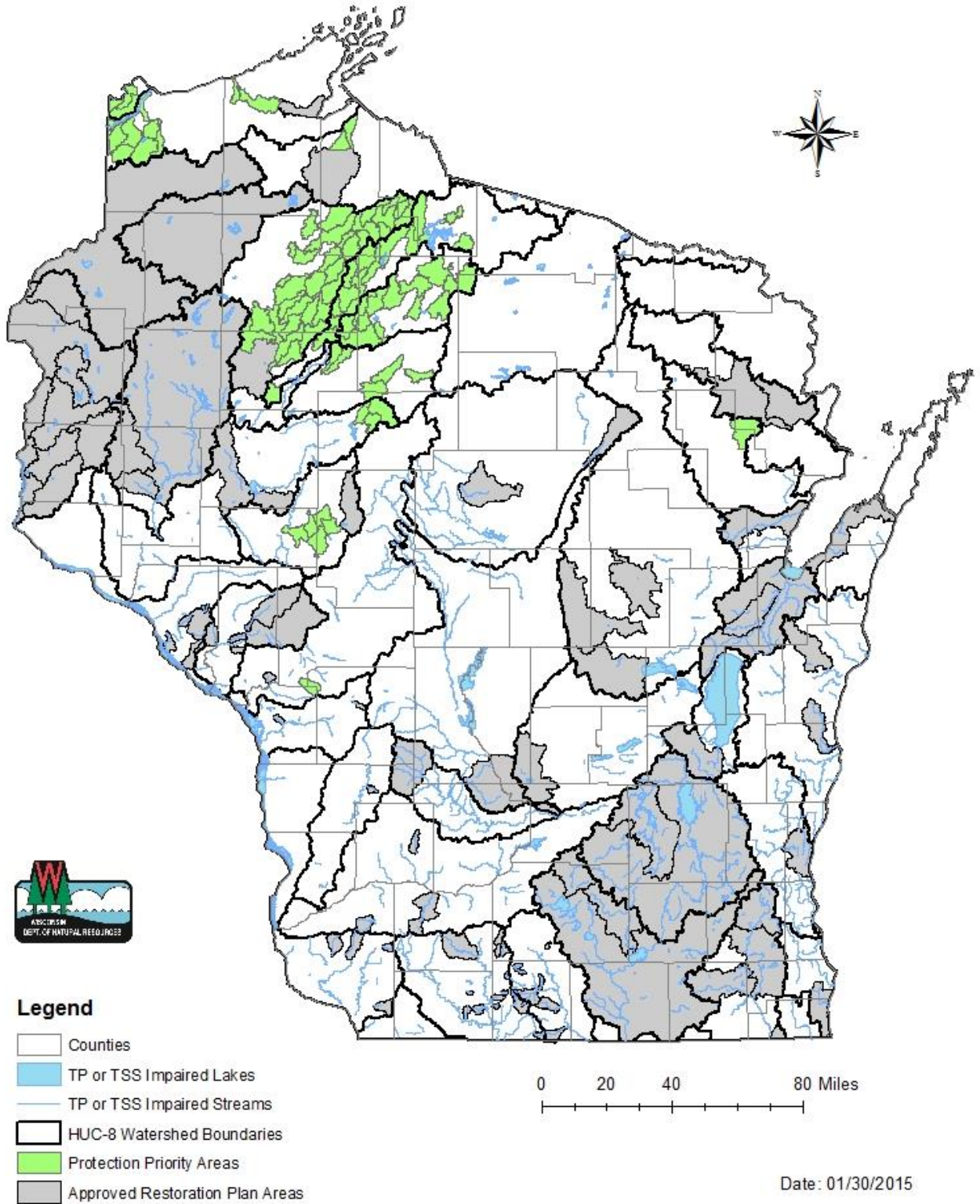
The selected metrics characterize the hydrology, habitat, geomorphology, water quality, and biological condition attributes of watershed health.



Attachment 3: Level 1 and 2 water quality restoration priority areas (HUC-12 watersheds) and existing water quality restoration or protection plans.



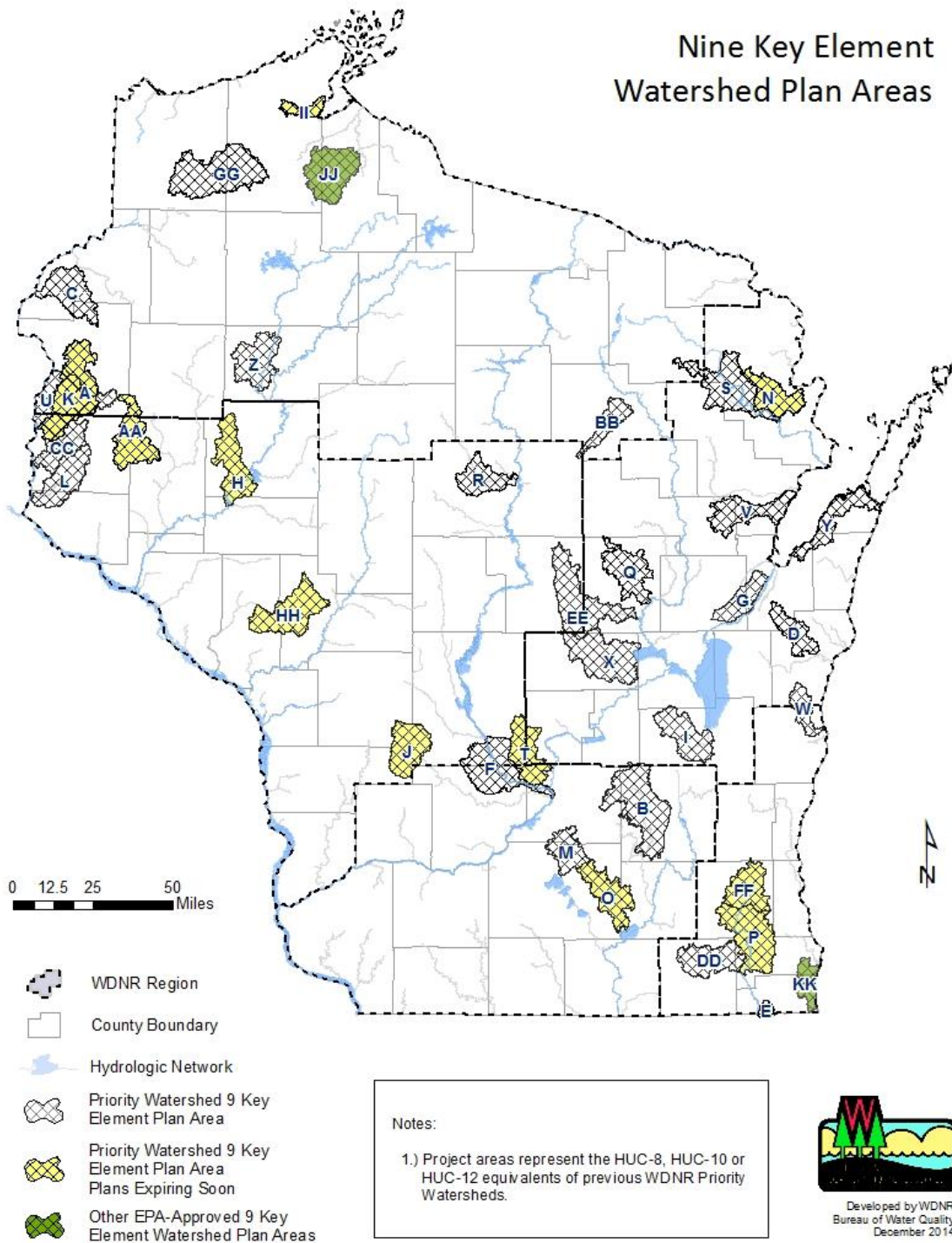
Attachment 4. Water quality protection priority areas (HUC-12 watersheds) and existing water quality restoration or protection plans.



Date: 01/30/2015

Attachment 5. Nine Key Element Watershed Plan Areas (list of watershed names, plan type, and status are provided in Attachment 6).

Nine Key Element Watershed Plan Areas



Wisconsin's Water Quality Restoration and Protection Prioritization Framework

Attachment 6. List of Nine Key Element Plan Areas, including watershed name and code, Hydrologic Unit Code number, expiration date, and plan type (restoration or protection).

Map Code	Watershed Name	Watershed Code	Hydrologic Unit Code (HUC)	Expiration Date	Plan Type
A	Balsam Branch	SC05	0703000508	2016	Protection
B	Beaver Dam River	UR03	0709000109	2019	Restoration
C	Big Wood Lake	SC11	0703000501	2019	Protection
D	Branch River	MA03	0403010105	2017	Protection
E	Camp & Center Lakes	part of FX02	071200061005	2017	Protection
F	Dell Creek	LW26	0707000319	2019	Protection
G	Duck/Apple/Ashwaubenon Creeks	LF02	0403020404 & 0403020401	2019	Restoration
H	Duncan Creek	LC18	0705000504	2015	Restoration
I	Fond du Lac River	UF03	0403020301 & 0403020302	2019	Restoration
J	Hillsboro	part of LW24	070700040104 & 070700040105	2015	Restoration
K	Horse Creek	part of SC04	070300050804	2019	Restoration
L	Kinnickinnic River (St. Croix Basin)	SC01	0703000511	2019	Restoration
M	Lake Mendota	LR09	0709000205	2018	Restoration
N	Lake Noquebay	GB09	0403010503	2016	Protection
O	Lake Ripley	part of LR11	070900020404	2016	Restoration
P	Little Muskego, Big Muskego, Wind Lakes	FX04	0712000603	2015	Restoration
Q	Lower Little Wolf River	WR06	0403020217	2018	Protection
R	Lower Rib River	CW23	0707000210	2019	Protection
S	Middle Peshtigo/Thunder Rivers	GB10	0403010504	2019	Protection
T	Neenah Creek	UF14	0403020102	2015	Restoration
U	Osceola Creek	part of SC08	070300050902	2017	Restoration
V	Pensaukee River	GB02	0403010301	2018	Protection
W	Pigeon River	SH06	0403010108	2019	Restoration
X	Pine & Willow Rivers	WR02	0403020220	2019	Restoration
Y	Red River/Sturgeon Bay	TK07	0403010204	2017	Protection
Z	Soft Maple/Hay Creeks	UC17	0705000107	2017	Restoration
AA	South Fork Hay River	LC06	0705000705	2015	Protection
BB	Springbrook Creek	CW21	0707000211	2018	Restoration



Wisconsin's Water Quality Restoration and Protection Prioritization Framework

Map Code	Watershed Name	Watershed Code	Hydrologic Unit Code (HUC)	Expiration Date	Plan Type
CC	St. Croix County Lakes Cluster	parts of SC01, SC02, SC08	070300050808, 070300050908, 070300051008, 070300051002	2018	Restoration
DD	Sugar/Honey Creeks	FX05	0712000604 & 0712000605	2018	Restoration
EE	Tomorrow/Waupaca River	WR05	0403020218	2017	
FF	Upper Fox River (IL)	FX07	0712000601	2015	Restoration
GG	Upper St. Croix/Eau Claire Rivers	SC18	0703000101	2018	Protection
HH	Upper Trempealeau River	BT05	0704000502	2016	Restoration
II	Whittlesey Creek	part of LS07	010403011008	2016	Protection
JJ	Marengo River	LS12	0401030204	2023	Protection
KK	Pike River	SE01 & SE02	0404000204	2038	Restoration

- * Not shown on the map in Attachment 5 are the following additional restoration plans:
- 1) Plum and Kankapot Creeks (HUC 0403020402) approved in December 2014
 - 2) St. Croix River Basin (HUC 07030001) with EPA approval pending



Attachment 7. List of EPA-approved Total Maximum Daily Load (TMDL) Restoration Plans, including approval year and link to TMDL websites or approved plan.

- [Rock River TMDL, 2012](#)
- [Red Cedar River \(Tainter Lake, Lake Menomin\) TMDL, 2012](#)
- [Lake St. Croix TMDL, 2013 \[PDF\]](#)
- [Lower Fox River Basin and Lower Green Bay TMDL, 2011 \[PDF\]](#)
- [Little Lake Wissota, 2010 \[PDF\]](#)
- [Milwaukee – Cedar Creek, 2008 \[PDF\]](#)
- [Mead Lake, 2008 \[PDF\]](#)
- [Little Willow Creek, 2008 \[PDF\]](#)
- [Otter Creek, 2008 \[PDF\]](#)
- [Dougherty Creek, 2008 \[PDF\]](#)
- [Hardies Creek, 2008 \[PDF\]](#)
- [Stillwell & Squaw Creek, 2007 \[PDF\]](#)
- [Parsons Creek, 2007 \[PDF\]](#)
- [Martin, Martinville, and Rogers Branch, 2007 \[PDF\]](#)
- [Gills Coulee Creek, 2006 \[PDF\]](#)
- [Snowden Branch, 2006 \[PDF\]](#)
- [Waumandee Creek Watershed, 2005 \[PDF\]](#)
- [Becky Creek, 2005 \[PDF\]](#)
- [Sugar Pecatonica River Basin, 2005 \[PDF\]](#)
- [Castle Rock Creek, 2004 \[PDF\]](#)
- [Carpenter Creek TMDL, 2004 \[PDF\]](#)
- [Gunderson Valley Creek, 2004 \[PDF\]](#)
- [Halfmoon Lake, 2004 \[PDF\]](#)
- [Silver Lake, 2004 \[PDF\]](#)
- [Trump Coulee Creek, 2004 \[PDF\]](#)
- [Eagle Creek & Joos Valley, 2003 \[PDF\]](#)
- [Sugar–Honey Creeks Watershed, 2003 \[PDF\]](#)
- [Middle Trempealeau River Watershed Sediment TMDL, 2002 \[PDF\]](#)
- [Jug Creek \[PDF\]](#)
- [Cedar Lake, 2003 \[PDF\]](#)
- [Token Creek, 2002 \[PDF\]](#)
- [Squaw Lake, 2000 \[PDF\]](#)



Attachment 8. List of Level 1 restoration plan HUC-12 areas (ongoing plan development) for EPA performance measure WQ-27 (sorted alphabetically by HUC-10 watershed name).

Alexander Lake-Wisconsin River
Berry Creek-Wisconsin River
070700020402
Devil Creek
070700020403
Joe Snow Creek-Wisconsin River
070700020404
Little Pine Creek
070700020401
Bear Creek-Embarrass Creek
Bear Creek
040302021303
Bear Creek-Embarrass River
Maple Creek
040302021302
Township of Deer Creek-Embarrass River
040302021301
Township of Libery-Embarrass River
040302021304
Bear Creek-Wolf River
Black Otter Lake-Wolf River
040302021404
Municipality of Stephenville-Bear Creek
040302021402
Town of Greenville-Bear Creek
040302021401
Village of Shiocton-Wolf River
040302021403
Beaver Creek
Eagle Nest Flowage-Beaver Creek
070700031402
Meadow Valley-Beaver Creek
070700031401
Big Green Lake
Big Green Lake
040302010902



Wisconsin's Water Quality Restoration and Protection Prioritization Framework

Silver Creek
040302010901
Big Roche a Cri Creek
Dead Horse Creek
070700030802
Lower Big Roche a Cri Creek
070700030804
Middle Big Roche a Cri Creek
070700030803
Upper Big Roche a Cri Creek
070700030801
Big Sandy Creek-Eau Claire River
Little Sandy Creek-Big Sandy Creek
070700021303
Mole Brook-Eau Claire River
070700021301
Prahl Creek-Big Sandy Creek
070700021302
Silver Creek-Eau Claire River
070700021304
Black Brook-Eau Claire River
Antigo Flats-East Branch of the Eau Claire Rivers
070700021203
Black Brook
070700021202
Bogus Swamp-East Fork of the Eau Claire River
070700021201
Oldens Creek-Eau Claire River
070700021205
West Branch of the Eau Claire River
070700021204
Black Creek
Beaver Creek-Black Creek
070700020701
Drewek Creek-Black Creek
070700020702
Buffalo and Puckaway Lakes-Fox River
Buffalo Lake-Fox River
040302010604
French Creek



Wisconsin's Water Quality Restoration and Protection Prioritization Framework

040302010602
Good Earth Creek-Fox River
040302010603
Portage Canal-Fox River
040302010601
Puckaway Lake-Fox River
040302010605
City of Berlin-Fox River
Barnes Creek
040302011105
Black Creek
040302011101
City of Berlin-Fox River
040302011106
Hogars Bayou-Fox River
040302011107
Mill Race-Fox River
040302011102
Puchyan River
040302011103
Town Ditch
040302011104
City of Stevens Point-Wisconsin River
Biron Flowage-Wisconsin River
070700030306
City of Stevens Point-Wisconsin River
070700030302
Hay Meadow Creek
070700030301
Little Plover River
070700030303
Mosquito Creek
070700030305
Village of Plover-Wisconsin River
070700030304
Copper River
Copper River Outlet
070700020203
Middle and South Forks of the Copper River
070700020202



Wisconsin's Water Quality Restoration and Protection Prioritization Framework

North Fork of the Copper River
070700020201
Cranberry Creek
Lower Cranberry Creek
070700031202
Upper Cranberry Creek
070700031201
Deerskin River
Blackjack Creek
070700010102
Deerskin River
070700010104
Little Deerskin River
070700010103
Thoroughfare Creek-Deerskin River
070700010101
Dell Creek-Wisconsin River
Long Lake-Wisconsin River
070700031908
Devil's Lake-Baraboo River
Boulder Creek-Baraboo River
070700040404
Cascade Mountain-Baraboo River
070700040406
Devil's Lake-Baraboo River
070700040402
Leech Creek
070700040405
Pine Creek
070700040401
Rawley Creek
070700040403
Dill Creek-Big Eau Pleine River
Dill Creek
070700021504
East Branch of the Big Eau Pleine River
070700021501
Hamann Creek
070700021506
Noisy Creek-Big Eau Pleine River



Wisconsin's Water Quality Restoration and Protection Prioritization Framework

070700021507

Porky Creek-Big Eau Pleine River

070700021505

Randall Creek

070700021503

West Branch of the Big Eau Pleine River

070700021502

Duck Creek-Wisconsin River

Duck Creek-Wisconsin River

070700050105

Headwaters Rocky Run

070700050103

Middle Branch Duck Creek

070700050101

North Branch Duck Creek

070700050102

Rocky Run

070700050104

Eagle River

Eagle River Chain of Lakes-Eagle River

070700010206

Headwaters-Eagle River

070700010201

Julia Creek

070700010202

Ninemile Creek-Eagle River

070700010204

Planting Ground Lake-Eagle River

070700010205

Three Lakes Chain of Lakes-Eagle River

070700010203

East Shore of Lake Winnebago

City of Utowana Beach-Lake Winnebago

040302030304

De Neveu Creek

040302030301

Pipe Creek-Lake Winnebago

040302030303

Taycheedah Creek

040302030302



Wisconsin's Water Quality Restoration and Protection Prioritization Framework

Eau Claire Flowage-Wisconsin River
County Line Creek-Wisconsin River
070700021401
Eau Claire Flowage
070700021403
Jim Moore Creek-Wisconsin River
070700021402
Evergreen River-Wolf River
Elton Creek-Evergreen River
040302020303
McCall Creek-Evergreen River
040302020304
Ninemile Creek
040302020301
Slough Gundy Rapids-Wolf River
040302020302
White Lake Creek-Wolf River
040302020305
Flume Creek-Little Wolf River
Bradley Creek-Little Wolf River
040302021504
Comet Creek
040302021503
Flume Creek
040302021502
Holt Creek-Little Wolf River
040302021501
Fourmile Creek
Fourmile Creek
070700030402
Fourmile Creek
Buena Vista Creek
070700030401
Nepco Lake
070700030403
Fourteenmile Creek
Fourteenmile Creek
070700030603
Leola Ditch
070700030601



Wisconsin's Water Quality Restoration and Protection Prioritization Framework

Lone Rock-Fourteenmile Creek
070700030602
Gillmore Creek-Big St. Germain River
Gillmore Creek
070700010503
Lost Creek-Big St. Germain Lake
070700010501
Plum Creek-Big St. Germain Lake
070700010502
Hemlock Creek
East Fork of Hemlock Creek
070700031001
Little Hemlock Creek
070700031003
Lower Hemlock Creek
070700031005
Middle Hemlock Creek
070700031004
Upper Hemlock Creek
070700031002
Lake Butte des Mortes
Brooks Cemetary
040302011203
Daggetts Creek
040302011202
Lake Butte des Mortes-Fox River
040302011205
Sawyer Creek
040302011204
Spring Brook
040302011201
Lake Dubay-Big Eau Pleine River
Fenwood Creek
070700021602
Freeman Creek
070700021603
Lake Dubay
070700021604
Rock Creek-Big Eau Pleine River
070700021601



Wisconsin's Water Quality Restoration and Protection Prioritization Framework

Lake Dubay-Wisconsin River
Bull Junior Creek
070700021802
Fourmile Creek
070700021801
Hog Creek
070700021804
Johnson Creek
070700021806
Lake Dubay-Wisconsin River
070700021807
Little Eau Claire River
070700021805
Mosinee Flowage-Wisconsin River
070700021803
Lake Mohawksin-Lake Alice-Wisconsin River
Big Pine Creek
070700011304
Crescent Creek-Wisconsin River
070700011302
Green Meadow Creek
070700011303
Lake Alice-Wisconsin River
070700011305
Lake Mohawksin-Wisconsin River
070700011306
Noisy Creek
070700011301
Lake Poygan
Alder Creek
040302022103
Arrowhead River
040302022105
Lake Poygan
040302022106
Medina Junction-Rat River
040302022101
Pumpkinseed Creek
040302022104
Town of Dale-Rat River



Wisconsin's Water Quality Restoration and Protection Prioritization Framework

040302022102

Lake Winnebago

Lake Winnebago

040302030401

Legend Lake-Wolf River

Dalles Creek-Wolf River

040302020701

Legend Lake-Wolf River

040302020702

Lily River

Bog Brook-Lily River

040302020204

East Branch of the Lily River

040302020205

Hunting River

040302020202

Non-Contributing-Lily River

040302020203

Pickrel Creek

040302020201

Squaw Creek-Wolf River

040302020206

Little Baraboo River-Baraboo River

Cazenovia Branch

070700040203

Crossman Creek

070700040202

Dutch Hollow Lake-Baraboo River

070700040206

Lake Redstone

070700040205

Little Baraboo River

070700040204

Plum Creek

070700040201

Twin Creek-Baraboo River

070700040207

Little Eau Pleine River

Bear Creek

070700021705



Wisconsin's Water Quality Restoration and Protection Prioritization Framework

Carlson Creek-Little Eau Pleine River
070700021701
Honey Island Flowage-Little Eau Pleine River
070700021706
McMillan Marsh-Little Eau Pleine River
070700021702
Squaw Creek/Scheuer Creek
070700021703
Townline Reservoir-Little Eau Pleine River
070700021707
Wild Creek-Little Eau Pleine River
070700021704
Little Rib River
Little Brook-Little Rib River
070700020902
West Fork of the Little Rib River-Rib River
070700020901
Little Roche a Cri Creek
Bingham Creek
070700030902
Carter Creek
070700030903
Fordham Creek-Little Roche a Cri Creek
070700030901
Friendship Lake-Little Roche a Cri Creek
070700030904
Lower Grand River
Belle Fountain Creek
040302010503
Grand Lake-Grand River
040302010502
Grand River
040302010504
Lake Emily
040302010501
Lower Lemonweir River
Brewer Creek-Lemonweir River
070700031702
Onemile Creek
070700031701



Wisconsin's Water Quality Restoration and Protection Prioritization Framework

Outlet of the Lemonweir River
070700031704
Sevenmile Creek
070700031703
Lower Tomahawk River
Lake Nokomis
070700011004
Little Rice Creek
070700011001
Little Rice River
070700011002
Rice River Flowage
070700011003
Mead Marsh-Yellow River
Mead Marsh-Yellow River
070700031301
Mecan River
Chafee Creek
040302010702
Little Pine Creek-Mecan River
040302010703
Mecan River
040302010704
Weddle Creek
040302010701
Middle and South Branches Embarrass River
Dent Creek-Middle Branch of the Embarrass River
040302021005
Elmhurst Creek-Middle Branch of the Embarrass River
040302021004
Logemanns Creek-Middle Branch Embarrass River
040302021006
Municipality of Caroline-South Branch Embarrass River
040302021007
Packard Creek-Middle Branch Embarrass River
040302021003
Spranger Creek-South Branch Embarrass River
040302021001
Tiger Creek-South Branch Embarrass River
040302021002



Wisconsin's Water Quality Restoration and Protection Prioritization Framework

Middle Lemonweir River
Bear Creek
070700031601
Cutler Ditch-Lemonweir River
070700031602
Fountain Creek-Little Lemonweir River
070700031604
Indian Creek-Little Lemonweir River
070700031603
New Lisbon Lake-Lemonweir River
070700031605
Middle Tomahawk River
Bear Creek-Tomahawk River
070700010905
Bearskin Creek
070700010906
Headwaters-Willow River
070700010901
Rocky Run
070700010904
Swamp Creek-Tomahawk River
070700010907
Swamsauger Creek
070700010902
Willow Reservoir
070700010903
Mill Creek
Bear Creek
070700030203
Lower Mill Creek
070700030204
Middle Mill Creek
070700030202
Upper Mill Creek
070700030201
Montello River
Klawitter Creek
040302010303
Montello River
040302010304



Wisconsin's Water Quality Restoration and Protection Prioritization Framework

Tagatz Creek
040302010301
Westfield Creek
040302010302
Narrows Creek-Baraboo River
Copper Creek-Baraboo River
070700040304
Hill Point Creek-Narrows Creek
070700040301
Narrows Creek
070700040302
Pleasant Valley-Baraboo River
070700040305
Seeley Creek
070700040303
New Wood River
Averil Creek-New Wood River
070700020102
East and Center Forks of the New Wood River
070700020101
North Branch and Mainstem Embarrass River
Mill Creek
040302021203
Pine Lake-Embarrass River
040302021204
Pony Creek-North Branch of the Embarrass River
040302021202
Strassburg Creek-North Branch of the Embarrass River
040302021201
Partridge Lake-Wolf River
Hatton Creek
040302021903
Mosquito Creek
040302021905
Partridge Crop Lake-Wolf River
040302021902
Partridge Lake-Wolf River
040302021906
Potters Creek
040302021901



Wisconsin's Water Quality Restoration and Protection Prioritization Framework

Walla Walla Creek
040302021904
Pelican River
Gudegast Creek
070700010704
Headwaters-North Branch Pelican River
070700010705
Lower Pelican River
070700010708
Middle Pelican River
070700010707
Monico Creek
070700010701
North Branch Pelican River
070700010706
Twin Lakes Creek
070700010703
Upper Pelican River
070700010702
Petenwell Lake
Campbell Creek-White Creek
070700031806
City of Wisconsin Rapids-Wisconsin River
070700030701
Duck Creek
070700031805
Fivemile Creek-Wisconsin River
070700030704
Grays Marsh
070700031808
Juneau County Ditch
070700031804
Klein Creek
070700031802
Mocassin Creek
070700030702
Petenwell Lake
070700030705
070700031803
Sevenmile Creek



Wisconsin's Water Quality Restoration and Protection Prioritization Framework

070700030703
Unnamed trib-Wisconsin River
070700031809
White Creek
070700031807
Pigeon River
North Branch of the Pigeon River
040302021101
Pigeon Lake-Pigeon River
040302021103
South Branch of the Pigeon River
040302021102
Pine River
Lower Pine River
070700020504
Middle Pine River
070700020503
North Branch of the Pine River
070700020502
Upper Pine River
070700020501
Pioneer Creek-Wisconsin River
Buckatabon Creek
070700010306
Lac Vieux Desert-Wisconsin River
070700010302
Muskrat Creek-Wisconsin River
070700010304
Pioneer Creek
070700010305
Portage Creek
070700010301
Rice Creek
070700010307
Sucker Creek-Wisconsin River
070700010308
Tamarack Creek
070700010303
Plover River
Headwaters of the Plover River



Wisconsin's Water Quality Restoration and Protection Prioritization Framework

070700030101
Jordan Pond-Plover River
070700030103
McDill Pond-Plover River
070700030104
Pike Lake-Plover River
070700030102
Prairie du Sac Dam-Wisconsin River
Hinkson Creek
070700050201
Prairie du Sac Dam-Wisconsin River
070700050206
Prentice Creek-Wisconsin River
070700050205
Rowan Creek
070700050202
Spring Creek
070700050204
Whalen Bay-Wisconsin River
070700050203
Prairie River
Big Hay Meadow Creek
070700020303
Lilly Hay Meadow Creek
070700020305
Lower Prairie River
070700020306
Middle Prairie River
070700020304
North Branch of the Prairie River
070700020302
Upper Prairie River
070700020301
Rainbow Flowage-Mud Creek-Wisconsin River
Little St. Germain Creek
070700010403
Mud Creek
070700010401
Rainbow Flowage-Wisconsin River
070700010404



Wisconsin's Water Quality Restoration and Protection Prioritization Framework

Sugar Camp Creek
070700010402
Red River
Mattoon Creek-West Branch of the Red River
040302020501
Miller Creek
040302020504
Moose Lake-Red River
040302020503
Red Lakes-Red River
040302020505
Silver Creek-West Branch of the Red River
040302020502
Rhineland Flowage-Upper Wisconsin River
Pine Lake Creek
070700010602
Rhineland Flowage
070700010603
Tom Doyle Creek-Wisconsin River
070700010601
Rocky Creek-Yellow River
East Branch of the Yellow River-Yellow River
070700031103
Headwaters of the Yellow River
070700031101
Owl Creek-Yellow River
070700031106
Puff Creek-Yellow River
070700031105
Rocky Creek
070700031104
South Branch of the Yellow River
070700031102
Rush Creek
Eightmile Creek
040302011001
Rush Creek
040302011002
School Section Creek-Wolf River
Navarino Marsh-Wolf River



Wisconsin's Water Quality Restoration and Protection Prioritization Framework

040302020903

Outagamie State Wildlife Area-Wolf River

040302020904

Schoenick Creek

040302020902

School Section Creek-Wolf River

040302020901

Shawano Lake

Loon Creek

040302020602

Pickereel Creek

040302020601

Shawano Lake

040302020603

Shioc River

City of Seymour-Black Creek

040302020805

East Branch of the Shioc River

040302020801

Herman Creek

040302020803

Mink Creek-Shioc River

040302020807

Toad Creek

040302020804

Village of Black Creek-Black Creek

040302020806

White Lake-Shioc River

040302020802

Somo River

Brant Creek

070700011101

Hay Creek-Somo River

070700011105

Headwaters-Somo River

070700011102

Landwehr Creek-Somo River

070700011104

Little Somo River

070700011103



Wisconsin's Water Quality Restoration and Protection Prioritization Framework

South Branch of the Little Wolf River
Nace Creek-South Branch of the Little Wolf River
040302021602
Nichol Creek-South Branch of the Little Wolf River
040302021604
North Branch of the Little Wolf River
040302021603
Peterson Creek
040302021601
040302021605
Spirit River
North Fork Spirit Creek
070700011201
Spirit River
070700011202
Spirit River Flowage
070700011204
Squaw Creek
070700011203
Strongs Prairie Non-contributing Area
Strongs Prairie Non-Contributing Area
070700031801
Swamp Creek
Headwaters-Wolf River
040302020101
Little Rice Lake-Wolf River
040302020102
Metonga Lake-Swamp Creek
040302020104
Spider Creek-Wolf River
040302020106
Squaw Creek-Swamp Creek
040302020105
Upper Post Lake-Wolf River
040302020103
Swan Lake-Fox River
Sand Spring Creek-Fox River
040302010101
Swan Lake-Fox River
040302010102



Wisconsin's Water Quality Restoration and Protection Prioritization Framework

Tenmile Creek
Ditch number 5-Ditch number 9
070700030502
Non-Contributing-Tenmile Creek
070700030501
South Branch Tenmile Creek
070700030503
Tenmile Creek
070700030504
Trappe River
Little Trappe River-Trappe River
070700020602
Prospect Creek-Trappe River
070700020601
Upper Grand River
Headwaters Grand River
040302010401
Little Green Lake-Grand River
040302010402
Upper Lemonweir River
Brandy Creek-Lemonweir River
070700031507
Dandy Creek-Lemonweir River
070700031508
Jay Creek-East Fork of the Lemonweir River
070700031506
Kreyer Creek-South Fork of the Lemonweir River
070700031504
Lake Tomah-South Fork of the Lemonweir River
070700031501
Mud Creek
070700031502
Sand Creek
070700031505
Water Mill Pond-Lemonweir River
070700031503
Upper Tomahawk River
Arbor Vitae Lakes
070700010801
Cedar Falls-Shishebogama Lake-Tomahawk River



Wisconsin's Water Quality Restoration and Protection Prioritization Framework

070700010806
Kaubashine Creek
070700010805
Mishonagon Creek-Tomahawk River
070700010803
Squirrel River
070700010804
Tomahawk Lake-Tomahawk River
070700010802
West Branch of the Wolf River
Elma Creek-West Branch of the Wolf River
040302020402
Little West Branch Creek
040302020403
Little West Branch of the Wolf River
040302020401
Neopit Millpond 108-West Branch of the Wolf River
040302020404
West Shore Lake Winnebago
Willow Harbor-Lake Winnebago
040302030102
West Shore of Lake Winnebago
City of Oshkosh-Lake Winnebago
040302030101
Van Dyne Creek-Lake Winnebago
040302030103
White River
Little Lunch Creek-White River
040302010804
Lunch Creek
040302010803
Soules Creek-White River
040302010802
Sucker Creek
040302010805
West Branch White River
040302010801
White River
040302010806
Wood Creek-Big Rib River



Wisconsin's Water Quality Restoration and Protection Prioritization Framework

Baldwin Creek-Big Rib River

070700020806

Lemke Creek

070700020802

McGinnis Creek

070700020805

Mink Creek-Big Rib River

070700020804

Silvernagel Creek-Big Rib River

070700020803

Wood Creek

070700020801



Attachment 9. List of Level 2 restoration plan HUC-12 areas identified by Aquatic Ecosystem Index scores (sorted alphabetically by HUC-10 watershed name).

Ahnapee River and Stony Creek
Ahnapee River
040301020204
Mashek Creek-Frontal Lake Michigan
040301020205
Rio Creek
040301020202
Silver Creek
040301020203
Stony Creek-Frontal Lake Michigan
040301020201
Allen Creek
Allen Creek
070900040302
City of Evansville-Allen Creek
070900040301
Bad Axe River
Pumpkin Ridge-North Fork Bad Axe River
070600010302
Springville Branch of the Bad Axe River
070600010301
Black Earth Creek
Halfway Prairie Creek
070700050503
Upper Black Earth Creek
070700050501
Black-Little Black Rivers
Correction Creek-Little Black River
070400070103
Cedar Creek
Jackson Marsh State Wildlife Area-Cedar Creek
040400030303
Town of Richfield
040400030301
East and West Branches Milwaukee River-Milwaukee River
Headwaters West Branch Milwaukee River



Wisconsin's Water Quality Restoration and Protection Prioritization Framework

040400030201

Kettle Moraine Lake-Milwaukee River

040400030202

Village of Kewaskum-Milwaukee River

040400030207

West Branch Milwaukee River

040400030203

East Twin River-Frontal Lake Michigan

East Twin River

040301010105

Jambo Creek

040301010103

Krok Creek-East Twin River

040301010102

Molash Creek-Frontal Lake Michigan

040301010101

Eau Claire River

Bears Grass Creek

070500060503

Fall Creek

070500060504

Thompson Valley Creek

070500060501

Eau Galle River

Carr Creek-Eau Galle River

070500051001

Galena River

Blacks Creek-Galena River

070600050304

Kelsey Branch-Galena River

070600050306

Madden Branch

070600050301

Pats Creek-Galena River

070600050302

Shullsburg Branch

070600050303

Harvey Creek-Buffalo River

Peeso Creek

070400030106



Wisconsin's Water Quality Restoration and Protection Prioritization Framework

Headwaters Des Plaines River
Brighton Creek
071200040101
Headwaters Des Plaines River
071200040103
Jerome Creek-Des Plaines River
071200040104
Kilbourn Road Ditch
071200040102
Headwaters Pecatonica River
Livingston Branch
070900030201
Village of Cobb
070900030202
Headwaters Sugar River
Badger Mill Creek
070900040201
Headwaters Sugar River
070900040202
Paoli-Sugar River
070900040203
Kewaunee River
Casco Creek-Kewaunee River
040301020304
Headwaters Kewaunee River
040301020301
Scarboro Creek
040301020303
School Creek
040301020302
Lake Menomin-Red Cedar River
Elk Creek
070500071005
Little Sugar River
Little Sugar River
070900040404
Ward Creek-Little Sugar River
070900040402
Lower Peshtigo River
Little River-Frontal Lake Michigan



Wisconsin's Water Quality Restoration and Protection Prioritization Framework

040301050605
Thomas Slough-Frontal Lake Michigan
040301050607
Lowes Creek-Chippewa River
Sherman Creek
070500050701
Manitowoc River-Frontal Lake Michigan
Cato Falls-Manitowoc River
040301010603
Little Manitowoc River-Frontal Lake Michigan
040301010604
Manitowoc River
040301010605
Village of Reedsville-Mud Creek
040301010601
Menomonee River
Little Menomonee River
040400030402
Menomonee River
040400030405
Village of Menomonee Falls-Menomonee River
040400030401
Middle Grant River
Blake Fork
070600030201
Hackett Branch-Grant River
070600030203
Mill Creek
North Mill Creek
071200040201
Milwaukee River-Frontal Lake Michigan
Lincoln Creek
040400030605
Milwaukee River
040400030606
Town of Freedomia-Milwaukee River
040400030602
Muddy Creek-Chippewa River
Iron Creek-Muddy Creek
070500050802



Wisconsin's Water Quality Restoration and Protection Prioritization Framework

Mullet River
Lower Mullet River
040301010903
Nippersink Creek
Headwaters Nippersink Creek
071200060903
North Branch Milwaukee River
Batavia Creek-North Branch Milwaukee River
040400030103
Lizard Mound State Park
040400030106
North Branch Milwaukee River
040400030107
Silver Creek
040400030104
North Branch Nippersink Creek
West Branch North Branch Nippersink Creek-North Branch Nippersink Creek
071200060801
North Fork Eau Claire River
Goggle-Eye Creek-North Fork Eau Claire River
070500060102
Little Otter Creek-Wolf River
070500060104
Oak Creek-Frontal Lake Michigan
Wind Point-Frontal Lake Michigan
040400020101
Onion River
City of Belgium
040301011002
Lower Onion River
040301011004
Middle Onion River
040301011003
Upper Onion River
040301011001
Otter Creek
Beaver Creek-Otter Creek
070500060401
Piscasaw Creek
Headwaters Piscasaw Creek



Wisconsin's Water Quality Restoration and Protection Prioritization Framework

070900060303
Lawrence Creek
070900060301
West Branch Piskasaw Creek
070900060302
Platte River
Leggett Creek
070600030501
Raccoon Creek
East Fork Raccoon Creek
070900031502
Headwaters Raccoon Creek
070900031501
Richland Creek
Headwaters Richland Creek
070900031101
Root River
City of Racine-Root River
040400020306
Community of Husher-Root River
040400020305
Hoods Creek
040400020304
Husher Creek-Root River
040400020303
Root River Canal
East Branch Root River Canal
040400020202
Root River Canal
040400020204
Village of Union Grove-West Branch Root River Canal
040400020201
West Branch Root River Canal
040400020203
Rush River
Village of Baldwin-Rush River
070400010501
Sheboygan River-Frontal Lake Michigan
Cedar Lake
040301011105



Wisconsin's Water Quality Restoration and Protection Prioritization Framework

City of Sheboygan Falls-Sheboygan River
040301011108
Community of Mt. Calvary
040301011101
Feldner's Creek-Sheboygan River
040301011103
Headwaters Sheboygan River
040301011102
Kiel Marsh State Wildlife Area-Sheboygan River
040301011106
Otter Creek-Sheboygan River
040301011107
Sheboygan River-Frontal Lake Michigan
040301011109
Sinnisawa River-Mississippi River
Menominee River
070600050201
Sinsinawa River
070600050203
South Fork Apple River-Apple River
South Fork Apple River
070600050502
West Fork Apple River-Apple River
070600050503
Squaw Creek-Fox River
Hoosier Creek
071200061001
Palmer Creek-Fox River
071200061003
Story Creek-Sugar River
Gill Creek-Sugar River
070900040503
Ross Crossing-Sugar River
070900040502
Story Creek
070900040501
Suamico and Little Suamico Rivers-Frontal Green Bay
Headwaters Little Suamico River
040301030201
North Branch Suamico River-Suamico River



Wisconsin's Water Quality Restoration and Protection Prioritization Framework

040301030205
South and West Branches of the Suamico River
040301030204
Tibbet Creek-Frontal Green Bay
040301030203
Sylvester Creek-Sugar River
Decatur Lake-Sugar Creek
070900040605
Judah Branch
070900040603
Norwegian Creek
070900040602
Sylvester Creek
070900040604
Taylor Creek-Sugar River
Mt Hope Cemetary
070900040704
Taylor Creek
070900040703
Willow Creek
070900040702
Upper Door Peninsula
Big Creek-Frontal Sturgeon Bay
040301020110
Egg Harbor-Frontal Green Bay
040301020108
Lilly Bay Creek
040301020109
Waukegan River-Frontal Lake Michigan
Waukegan River-Frontal Lake Michigan
040400020501
West Branch Sugar River
West Branch Sugar River
070900040103
West Twin River
Black Creek
040301010201
Devils River
040301010202
Francis Creek-West Twin River



Wisconsin's Water Quality Restoration and Protection Prioritization Framework

040301010204

Neshota River

040301010203

West Twin River

040301010205

White River

Como Creek

071200060601

Ore Creek

071200060603



Attachment 10. List of Level 2 restoration plan HUC-12 areas identified by Wisconsin's Nutrient Strategy – top group phosphorus watersheds (sorted alphabetically by HUC-10 watershed name).

Ames Branch-Pecatonica River
Ames Branch
070900030305
Bonner Branch
070900030301
Otter Creek
070900030304
Wood Branch
070900030302
Bear Creek-Embarrass River
Township of Deer Creek-Embarrass River
040302021301
Bear Creek-Wolf River
Black Otter Lake-Wolf River
040302021404
Municipality of Stephenville-Bear Creek
040302021402
Town of Greenville-Bear Creek
040302021401
Black River and Sauk and Sucker Creeks-Frontal Lake Michigan
Barr Creek-Frontal Lake Michigan
040301011202
Black River
040301011201
Sauk Creek
040301011204
Sucker Creek-Frontal Lake Michigan
040301011203
Dill Creek-Big Eau Pleine River
Dill Creek
070700021504
East Branch of the Big Eau Pleine River
070700021501
Hamann Creek
070700021506
Noisy Creek-Big Eau Pleine River



Wisconsin's Water Quality Restoration and Protection Prioritization Framework

070700021507
Porky Creek-Big Eau Pleine River
070700021505
Randall Creek
070700021503
West Branch of the Big Eau Pleine River
070700021502
East Branch Pecatonica River
Whiteside Creek
070900030804
Honey Creek-Pecatonica River
Hawthorn Creek-Honey Creek
070900031004
Honey Creek
070900031005
Jordan Creek
070900031002
Lake Arbutus-Black River
O'Neill Creek
070400070902
Lake Butte des Mortes
Brooks Cemetary
040302011203
Daggetts Creek
040302011202
Lake Butte des Mortes-Fox River
040302011205
Sawyer Creek
040302011204
Spring Brook
040302011201
Little Eau Pleine River
Bear Creek
070700021705
Carlson Creek-Little Eau Pleine River
070700021701
Honey Island Flowage-Little Eau Pleine River
070700021706
McMillan Marsh-Little Eau Pleine River
070700021702



Wisconsin's Water Quality Restoration and Protection Prioritization Framework

Squaw Creek/Scheuer Creek
070700021703
Wild Creek-Little Eau Pleine River
070700021704
Little Platte River
Blockhouse Creek
070600030404
Middle Little Platte River
070600030405
Mounds Branch
070600030401
Upper Little Platte River
070600030402
Lower Grant River
Boice Creek
070600030302
Rattlesnake Creek
070600030301
Mineral Point Branch
Headwaters Mineral Point Branch
070900030102
North Branch Manitowoc River
Headwaters North Branch Manitowoc River
040301010301
North Branch Manitowoc River
040301010303
Spring Creek
040301010302
Popple River
North Fork of the Popple River
070400070201
South Fork of the Popple River
070400070202
Rock Creek-Black River
Bear Creek-Rock Creek
070400070403
Municipality of Veefkind-Rock Creek
070400070402
Nelson Creek
070400070401



Wisconsin's Water Quality Restoration and Protection Prioritization Framework

Rocky Creek-Yellow River
East Branch of the Yellow River-Yellow River
070700031103
Headwaters of the Yellow River
070700031101
Puff Creek-Yellow River
070700031105
South Branch of the Yellow River
070700031102
Sevenmile and Silver Creeks-Frontal Lake Michigan
Centerville Creek-Frontal Lake Michigan
040301010704
Pine Creek-Frontal Lake Michigan
040301010702
Point Creek
040301010703
Sevenmile Creek-Frontal Lake Michigan
040301010705
Silver Creek
040301010701
Shioc River
City of Seymour-Black Creek
040302020805
East Branch of the Shioc River
040302020801
Herman Creek
040302020803
Toad Creek
040302020804
Village of Black Creek-Black Creek
040302020806
South Branch Manitowoc River
City of Chilton-South Branch Manitowoc River
040301010404
Headwaters Killsnake River
040301010406
Headwaters South Branch Manitowoc River
040301010401
Killsnake River
040301010407



Wisconsin's Water Quality Restoration and Protection Prioritization Framework

Pine Creek
040301010403
South Branch Manitowoc River
040301010408
Stony Brook-South Branch Manitowoc River
040301010402
Upper Grand River
Headwaters Grand River
040302010401
Little Green Lake-Grand River
040302010402
Yellowstone River
Upper Yellowstone River
070900030701

