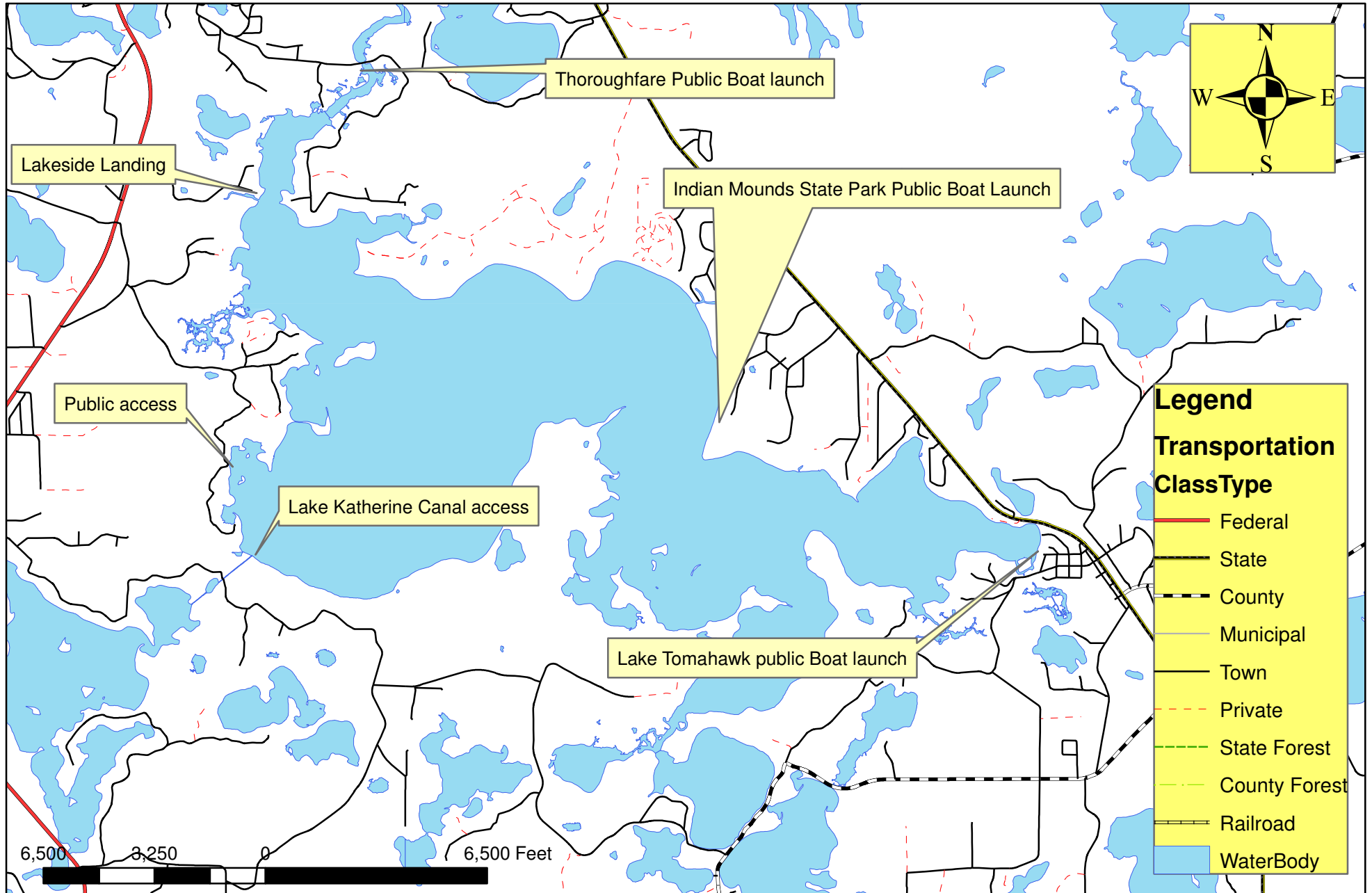


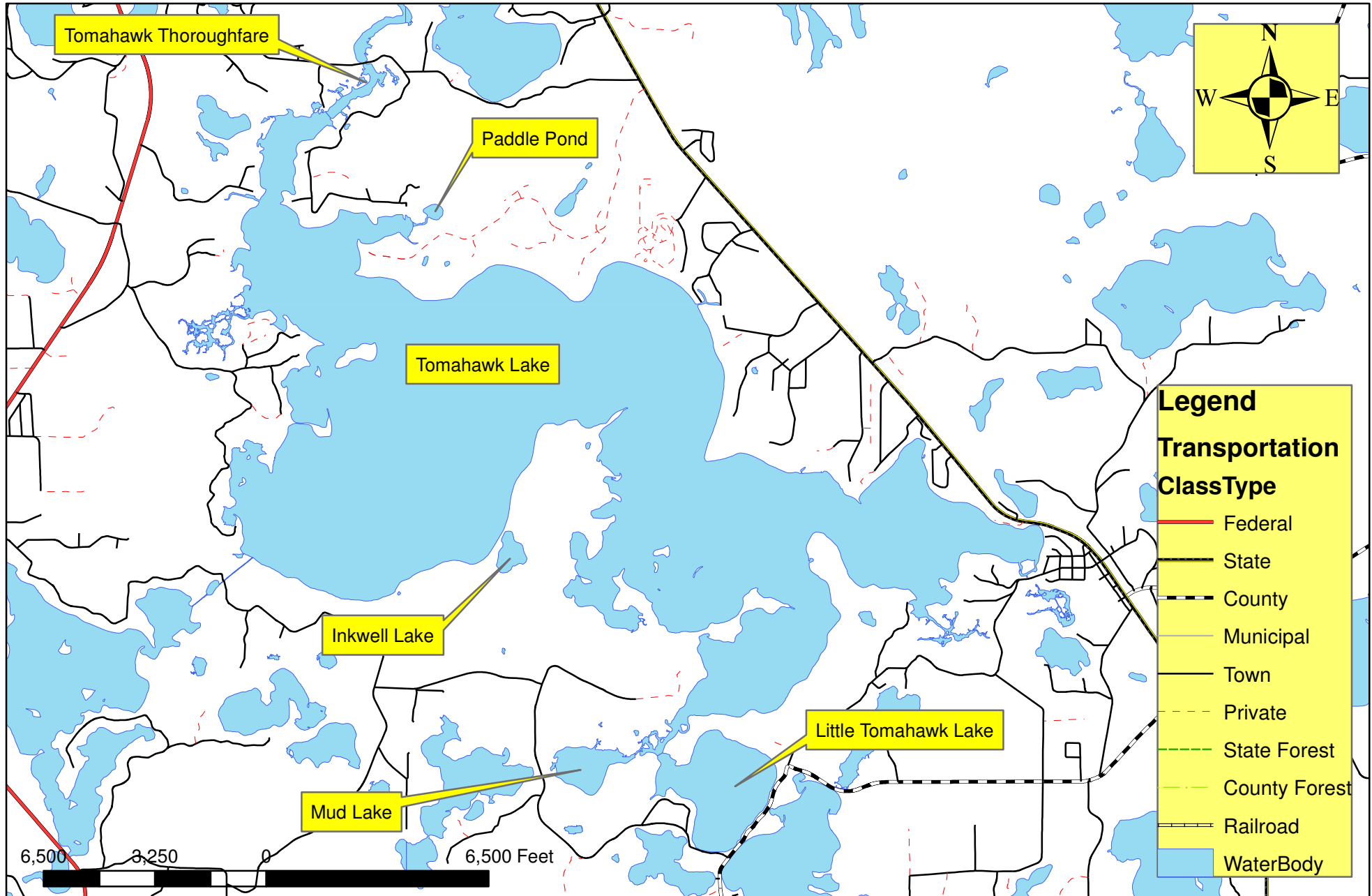
PreTreatmentBeds2016

Id	Acres
1	1.58
2	0.87
26	0.43
27	0.29
19	0.89
20	0.64
21	0.08
22	1.83
23	0.67
11	0.36
10	0.25
6	0.89
30	1.07
28	1.89
29	1.12
3	0.41
4	0.39
5	0.67
7	0.95
8	4.43
9	0.4
12	1.73
13	0.3
14	0.5
15	0.54
16	0.4
18	0.33
17	0.5
24	0.56
25	0.75

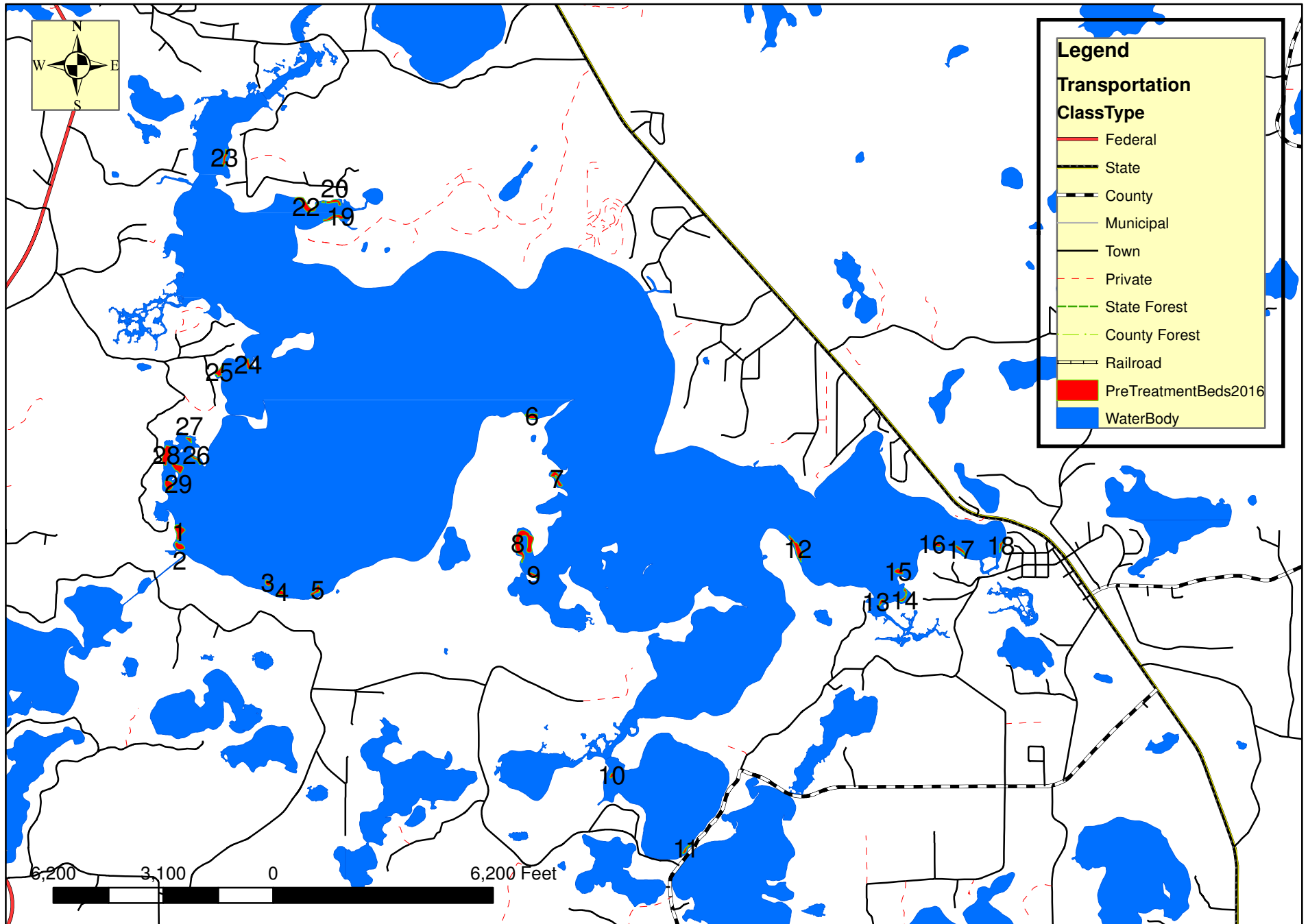
Tomahawk Lake Public Access Points



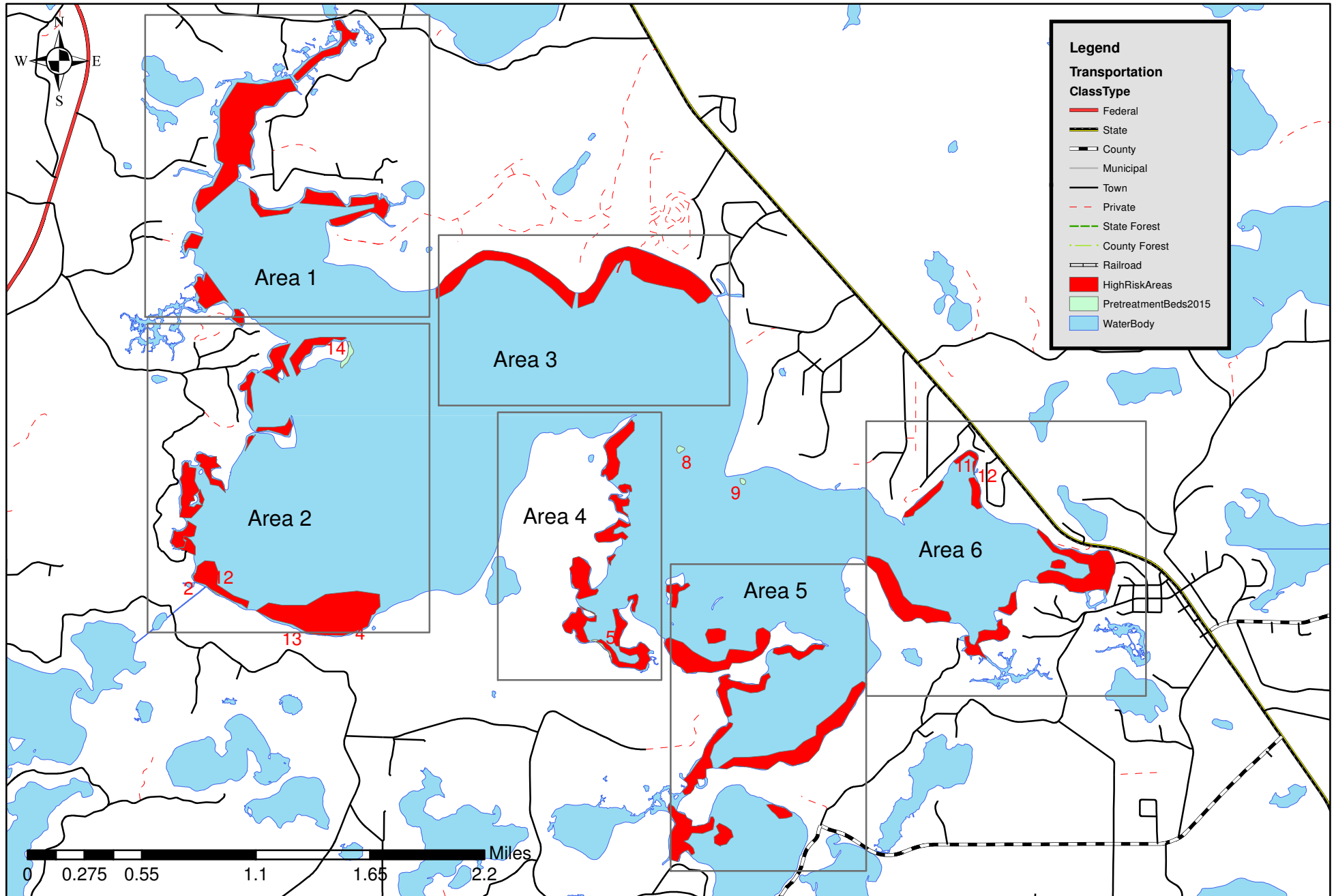
Tomahawk Lake Watershed, Oneida County Wisconsin



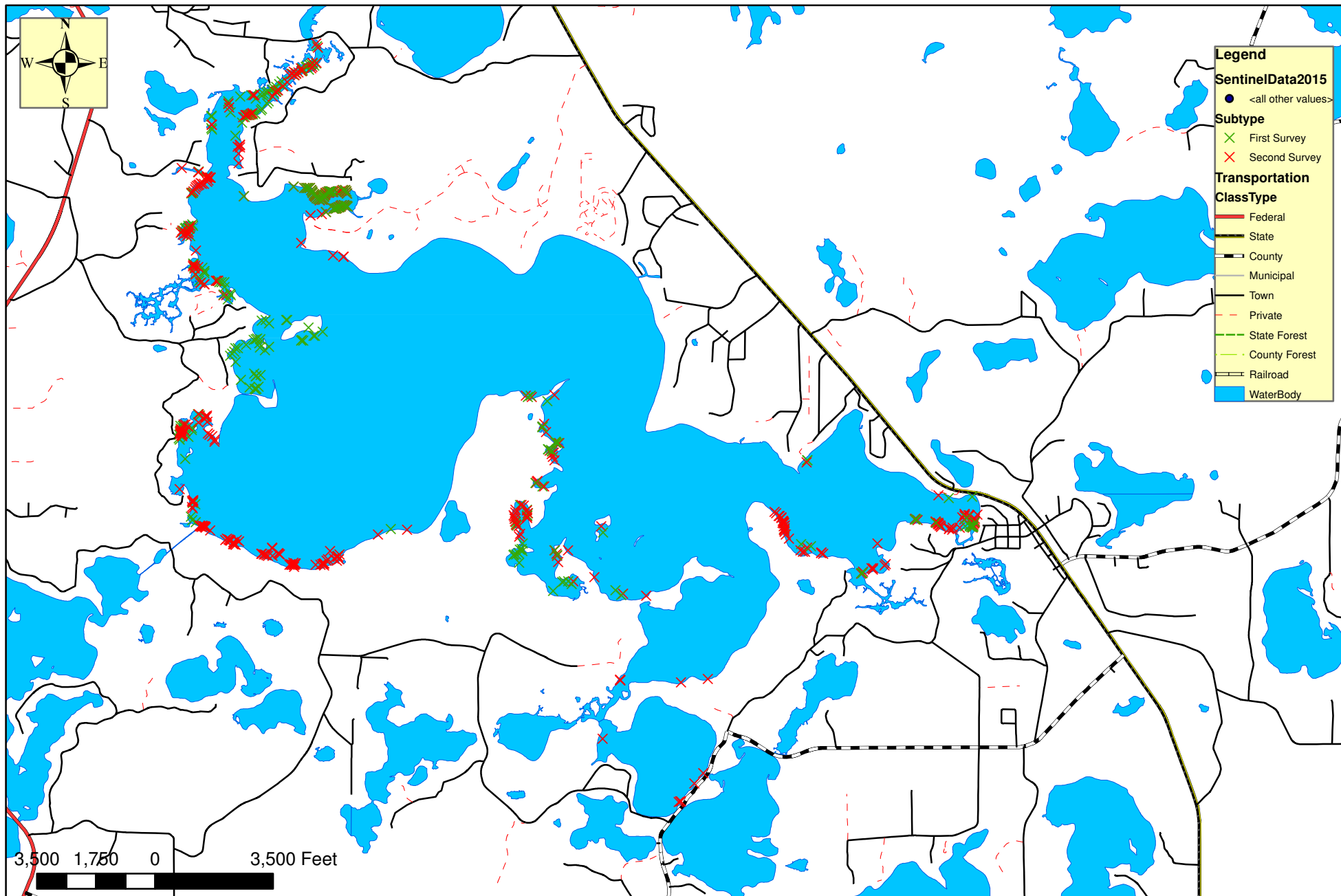
2016 Tomahawk Lake Proposed Chemical Treatment Polygons



2015 EWM "High Risk Areas", Tomahawk Lake, Oneida County



Map 4 2015 "Sentinels" Survey" of Tomahawk Lake Watershed



PreTreatmentBeds2016

Id	Acres
1	1.58
2	0.87
26	0.43
27	0.29
19	0.89
20	0.64
21	0.08
22	1.83
23	0.67
11	0.36
10	0.25
6	0.89
30	1.07
28	1.89
29	1.12
3	0.41
4	0.39
5	0.67
7	0.95
8	4.43
9	0.4
12	1.73
13	0.3
14	0.5
15	0.54
16	0.4
18	0.33
17	0.5
24	0.56
25	0.75