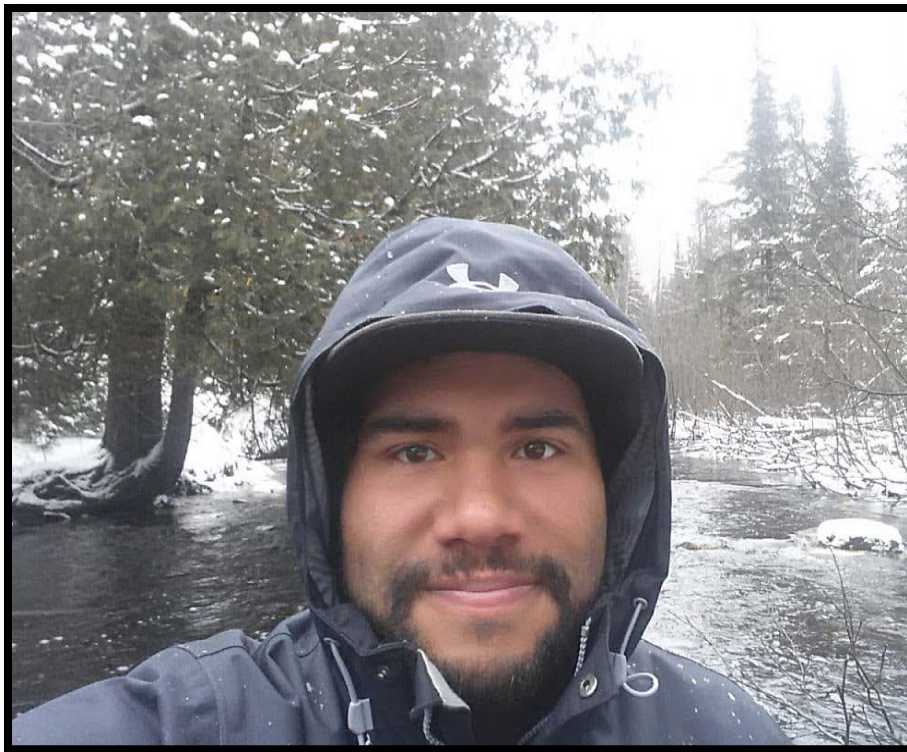




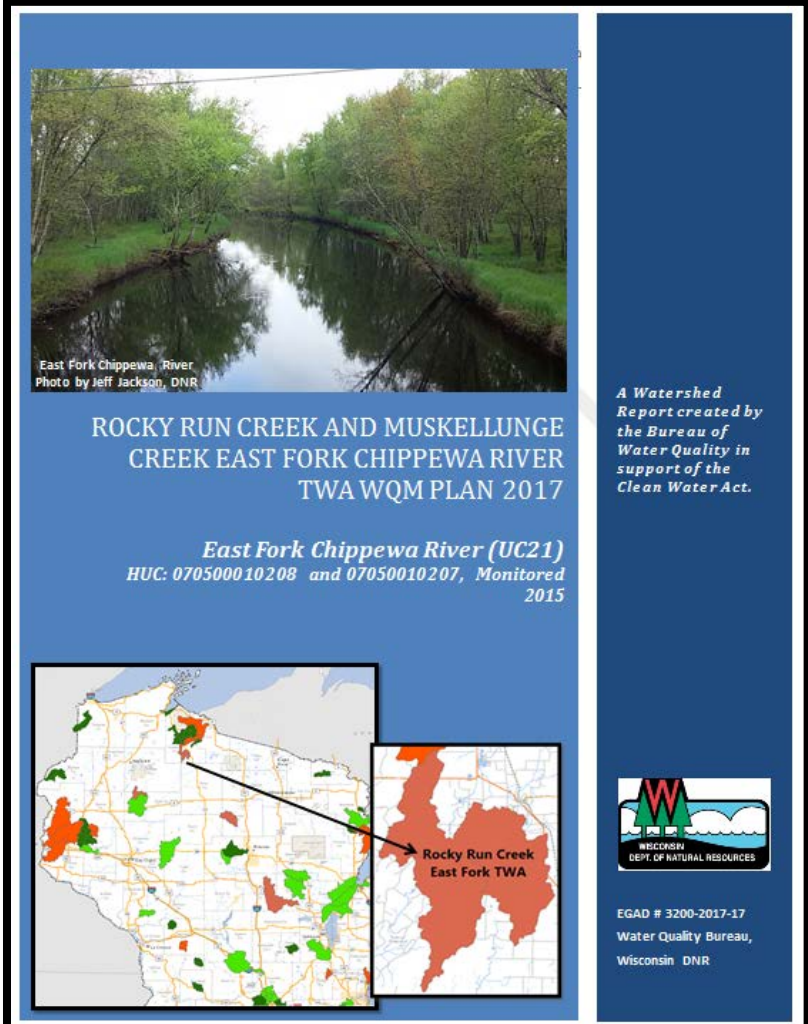
# Rocky Run and Muskellunge Creek East Fork Chippewa River TWA WQM Plan 2017

## *East Fork Chippewa River (UC21)*



Jeff Jackson, DNR

 Throughout the presentation when you see this symbol,  put your cursor over the box to read more detail.



East Fork Chippewa River  
Photo by Jeff Jackson, DNR

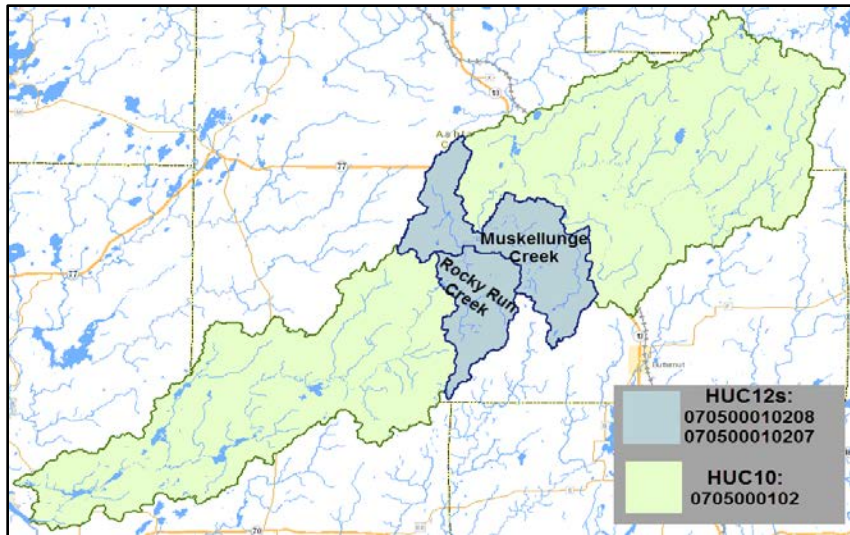
**ROCKY RUN CREEK AND MUSKELLUNGE  
CREEK EAST FORK CHIPPEWA RIVER  
TWA WQM PLAN 2017**

*East Fork Chippewa River (UC21)*  
HUC: 070500010208 and 07050010207, Monitored  
2015

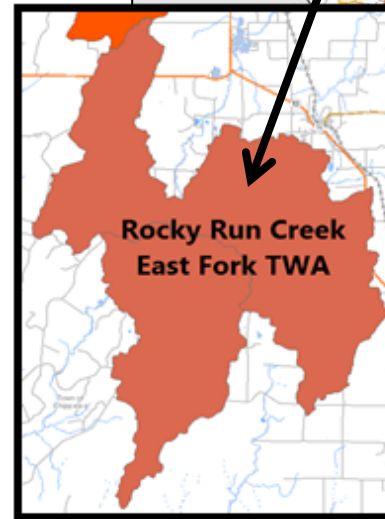
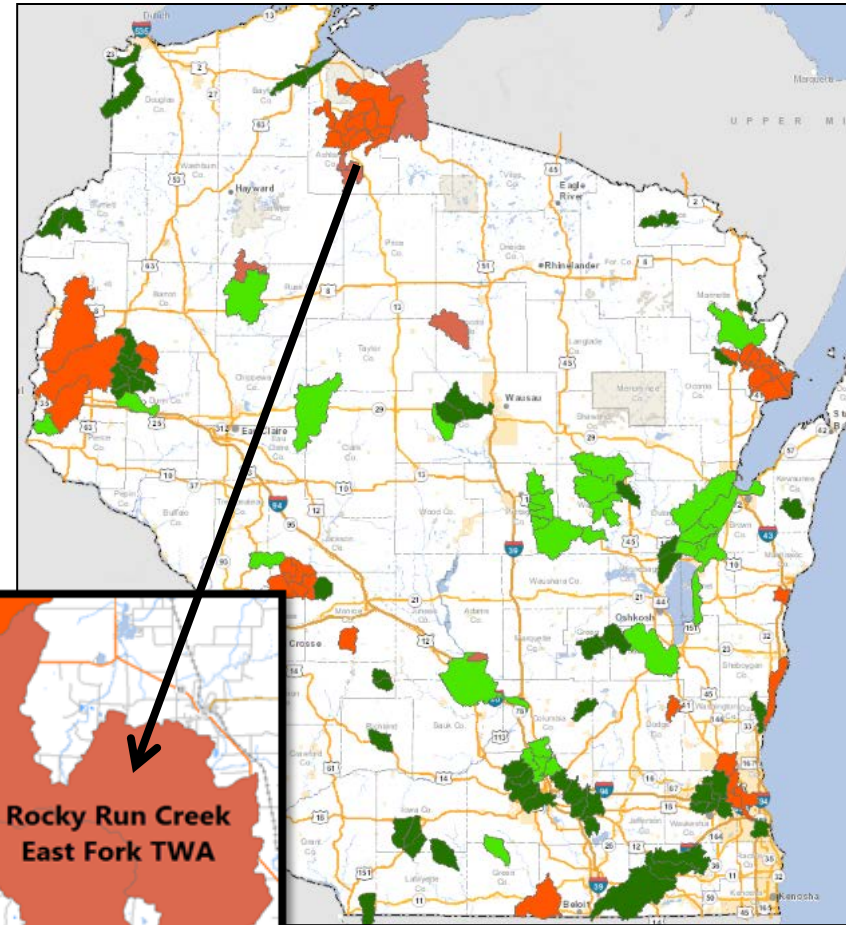
**WISCONSIN  
DEPT. OF NATURAL RESOURCES**

EGAD # 3200-2017-17  
Water Quality Bureau,  
Wisconsin DNR

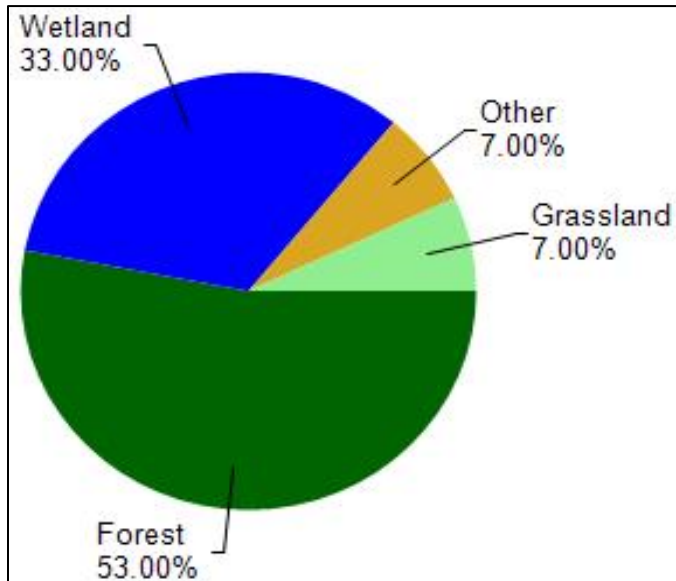
# Rocky Run and Muskellunge Creek TWA Project Location



- Rocky Run Creek (HUC12: 070500010207)
- Muskellunge Creek (HUC12: 070500010208) TWA are shown within the
- East Fork Chippewa River (HUC10: 0705000102).



# Land Use

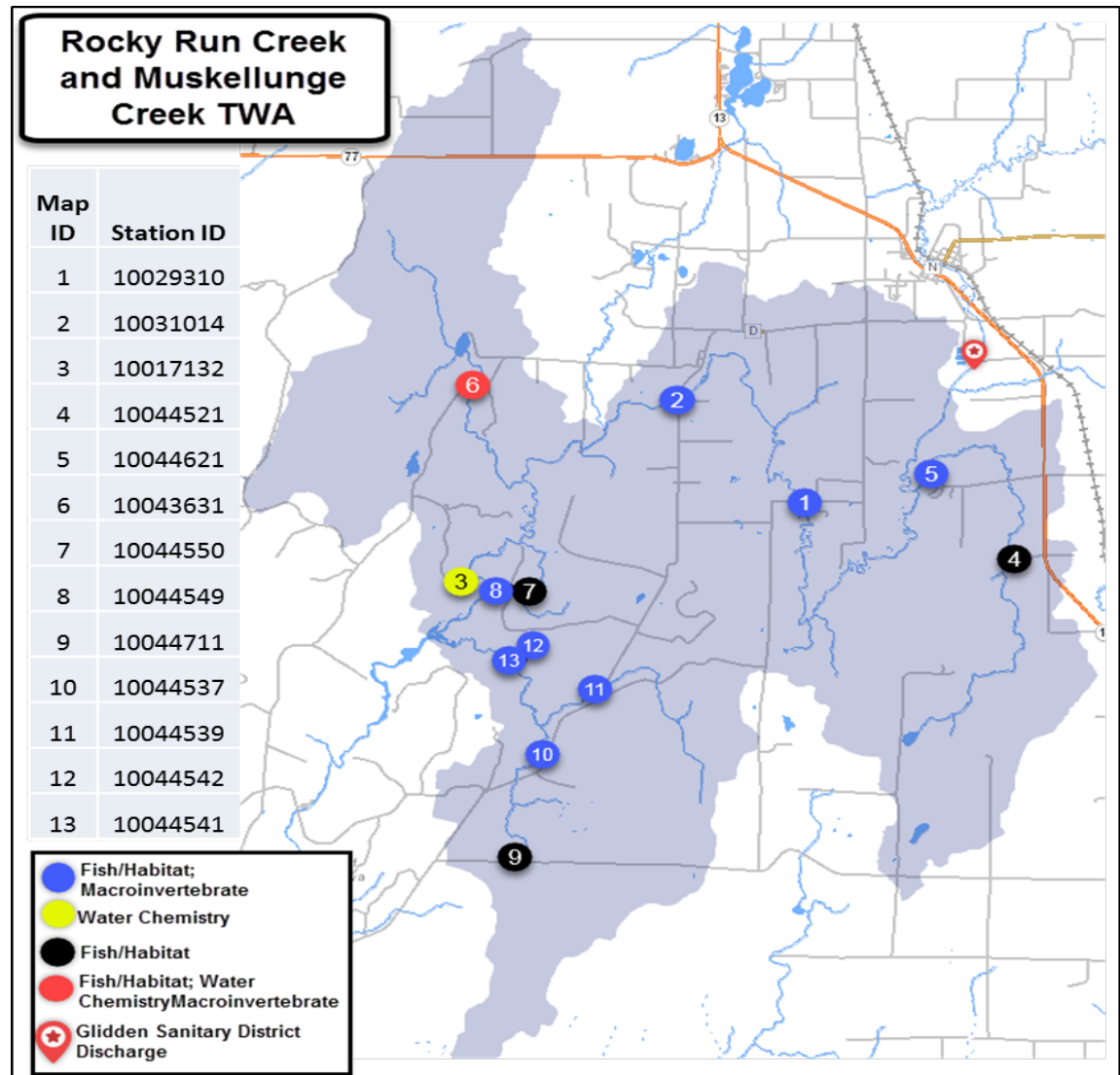


The East Fork Chippewa River watershed (UC21) has 310.53 stream miles, 2,431.41 lake acres and 65,073.81 wetland acres. The landscape in the area is primarily forest (53%), wetland (33%) and a mix of grassland (7%) and other uses. The watershed has a small agricultural presence that is dominated by grass fields and few row crop fields.



# Purpose

- Collect baseline physical, biological, and chemical water quality data in Rocky Run and Muskellunge Creek to fill gaps for assessments and to verify the health and condition of the watersheds.
- The data will be used for management activities including updating waterbody assessment status (i.e. future monitoring work for 303(d) or ERW/ORW recommendations), making management (restoration or protection) recommendations, updating water and watershed narratives and for watershed planning.

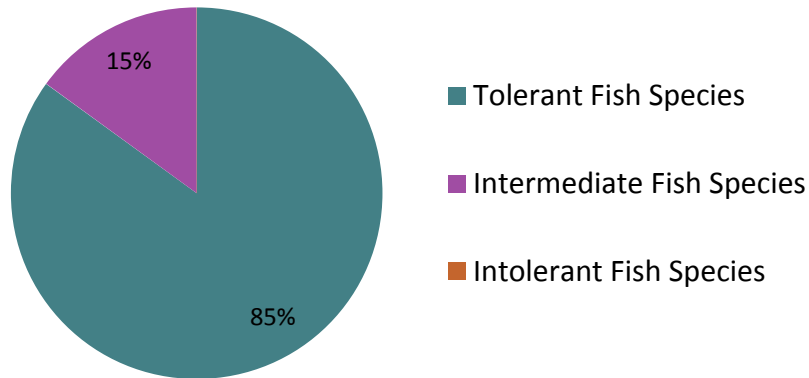


# Overall Study Results

Map ID	Station Number	Station Name	Natural Community	Fish IBI	Fish Rating	Habitat Score	Habitat Rating
1	10029310	East Fork of Chippewa River 55m US Bay Rd	Cool-Warm Main Stem	70	Excellent	53	Good
2	10031014	East Fork of Chippewa River US Bay Rd	Cool-Warm Main Stem	100	Excellent	95	Excellent
4	10044521	Dorns Cr. US Hank Bucheger Road.	Cool-Warm Headwater	50	Fair	53	Good
5	10044621	Dorns Creek 575m US E.F. Chippewa River Confluence	Cool-Warm Headwater	30	Poor	72	Good
6	10043631	Muskellunge Creek DS Forest Road	Cool-Warm Headwater	n/a	n/a	65	Good
7	10044550	Unnamed Trib to East Fork Chippewa River 10m US Kenyon Road	Cool-Warm Headwater	n/a	n/a	58	Good
8	10044549	Unnamed Trib East Fork of Chippewa River 110m DS Kenyon Rd	Cool-Warm Headwater	20	Poor	63	Good
9	10044711	Unnamed Trib to Rocky Run Creek 130m DS Bear Lake Road	Cool-Warm Headwater	0	Poor	68	Good
10	10044537	Rocky Run 1280m DS of Right of Way Road	Cool-Warm Headwater	90	Good	63	Good
11	10044539	Unnamed Trib Rocky Run Creek DS Right of Way Road	Cool-Warm Headwater	50	Fair	53	Good
12	10044542	Unnamed Trib to Bay Spring 20m us Confluence	Cool-Cold Headwater	80	Good	58	Good
13	10044541	Bay Spring Creek DS Bay Spring Pond	Cool-Cold Headwater	60	Fair	38	Fair

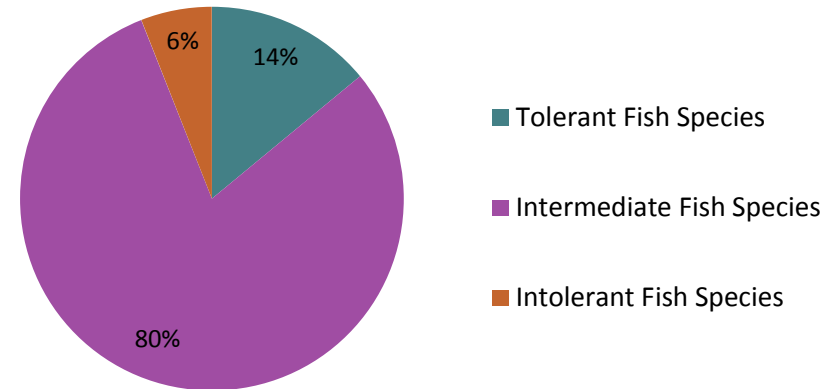
# Study Results – Fish Assemblage

## Fish Assemblage in Tributaries



The most common fish species collected from the headwater tributaries were creek chub, brook stickleback, white sucker, central mudminnow and fine scale dace.

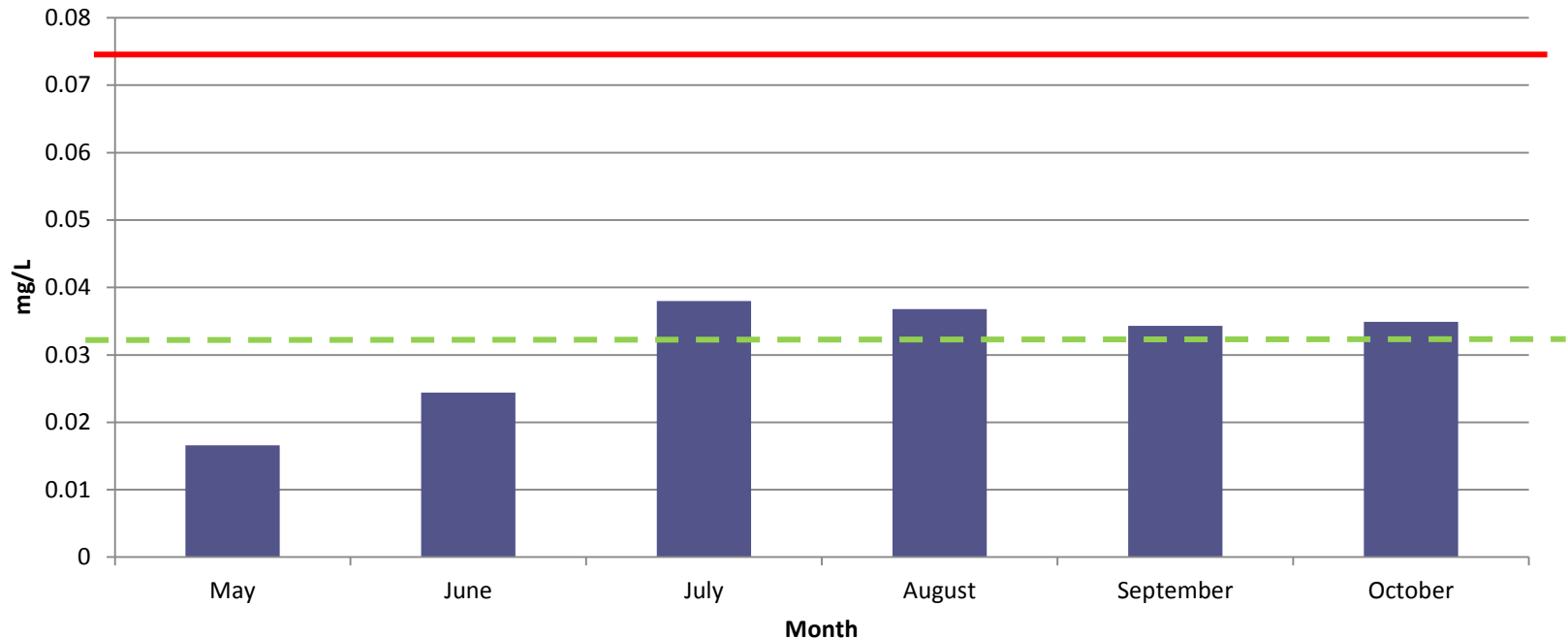
## Fish Assemblage in E.F. Chipewa River





The most common fish species collected from the two mainstem sites were burbot, blackside darter, common shiner, central mudminnow, fantail darter and longnose dace.

# Study Results – Phosphorus

## Phosphorus Concentration on Muskellunge Creek



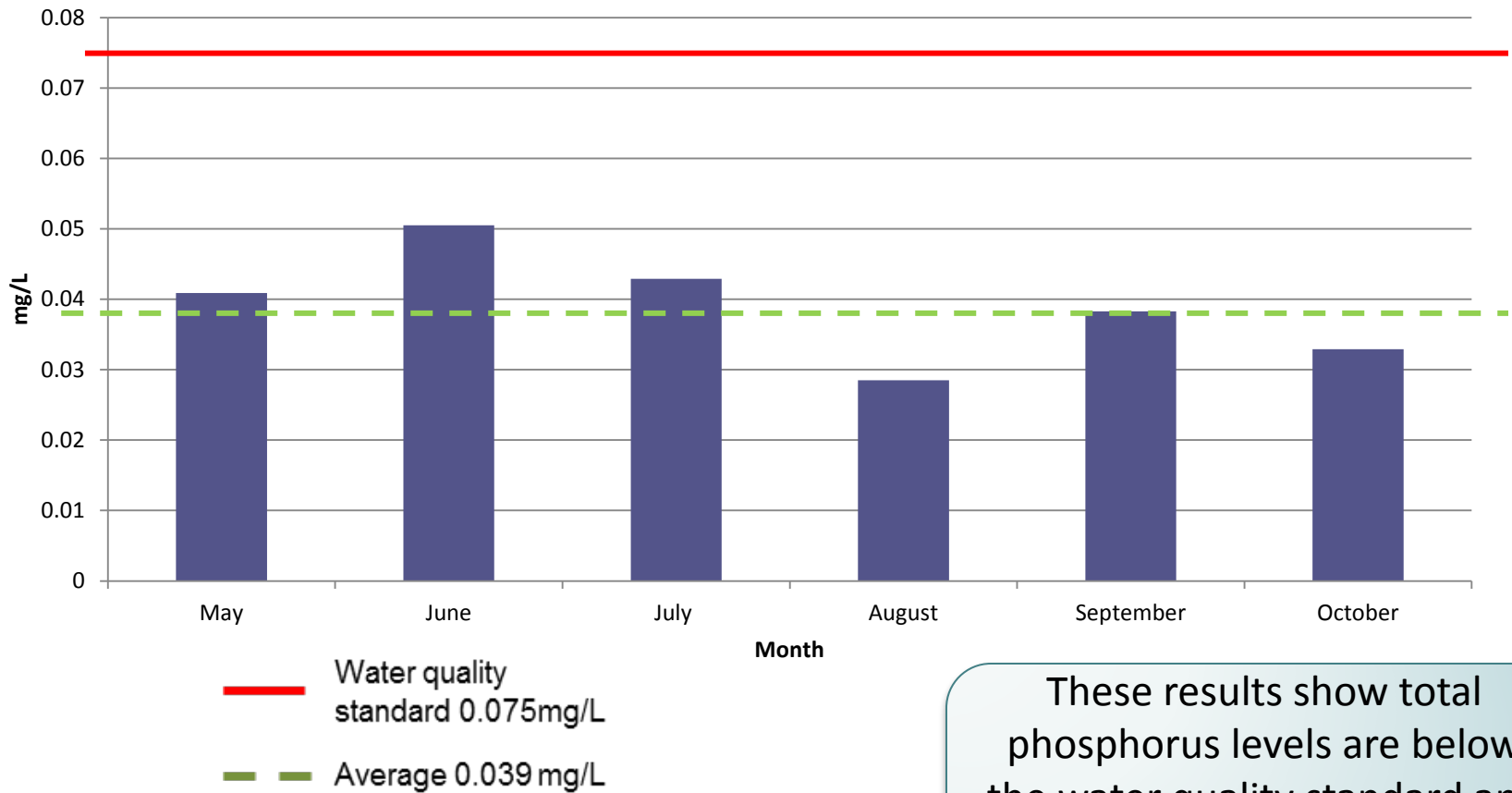
 Water quality standard 0.075mg/L

 Average 0.0308 mg/L

These results show total phosphorus levels are below the water quality standard and the waters are not impaired for total phosphorus. .

# Study Results – Phosphorus

## Phosphorus Concentration at East Fork Chippewa River



These results show total phosphorus levels are below the water quality standard and the waters are not impaired for total phosphorus. .





# Recommendations

- Ensure that ***Wisconsin's Forestry Best Management Practices (BMPs) for Water Quality*** are implemented with partners.
- Maintain culverts and conduct periodic culvert audits to verify adequate water flow, confirm the avoidance of excessive sedimentation, and determine allowable fish passage.
- Manage Beaver populations in designated trout waters with potential partners DNR, US Forest Service.

# DNR Monitoring Recommendations

- DNR should re-assess waters managed for trout within these watersheds. No trout were collected during this study.
- DNR should consider a thermal study with continuous temperature probes to evaluate the cold water potential of managed trout waters in these watersheds.
- DNR should re-survey Muskellunge Creek for fish to re-evaluate the fish community.
- DNR should re-survey Dorn's Creek for fish to re-evaluate the fish community.

# For more information

## Contact:

- Tom Aartila, Jon Kleist, or Jeff Jackson, Northern District
- Link to the [TWA WQM Plans website](#)
- Link to [Draft Report](#)

