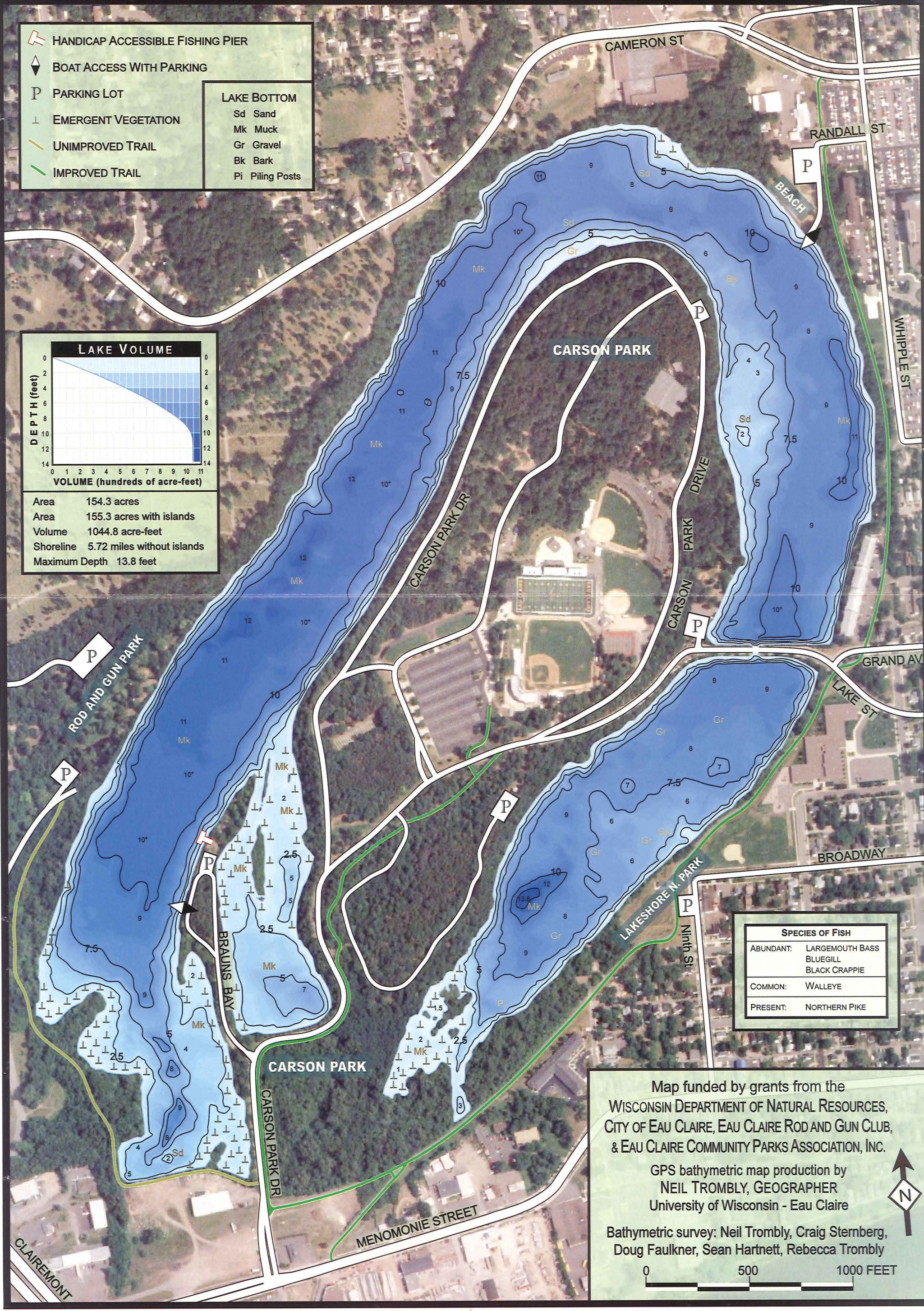
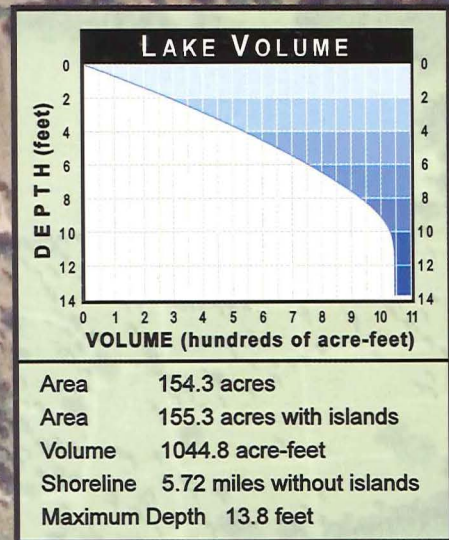


HALF MOON LAKE

EAU CLAIRE, WISCONSIN

BATHYMETRIC MAP
with 2.5-foot depth contours
measured from full pool elevation 769.7 ft
Lake surveyed Summer, 2005 - 2006

	HANDICAP ACCESSIBLE FISHING PIER	LAKE BOTTOM Sd Sand Mk Muck Gr Gravel Bk Bark Pi Piling Posts
	BOAT ACCESS WITH PARKING	
	PARKING LOT	
	EMERGENT VEGETATION	
	UNIMPROVED TRAIL	
	IMPROVED TRAIL	



SPECIES OF FISH	
ABUNDANT:	LARGEMOUTH BASS BLUEGILL BLACK CRAPPIE
COMMON:	WALLEYE
PRESENT:	NORTHERN PIKE

Map funded by grants from the
WISCONSIN DEPARTMENT OF NATURAL RESOURCES,
CITY OF EAU CLAIRE, EAU CLAIRE ROD AND GUN CLUB,
& EAU CLAIRE COMMUNITY PARKS ASSOCIATION, INC.

GPS bathymetric map production by
NEIL TROMBLY, GEOGRAPHER
University of Wisconsin - Eau Claire

Bathymetric survey: Neil Trombly, Craig Sternberg,
Doug Faulkner, Sean Hartnett, Rebecca Trombly