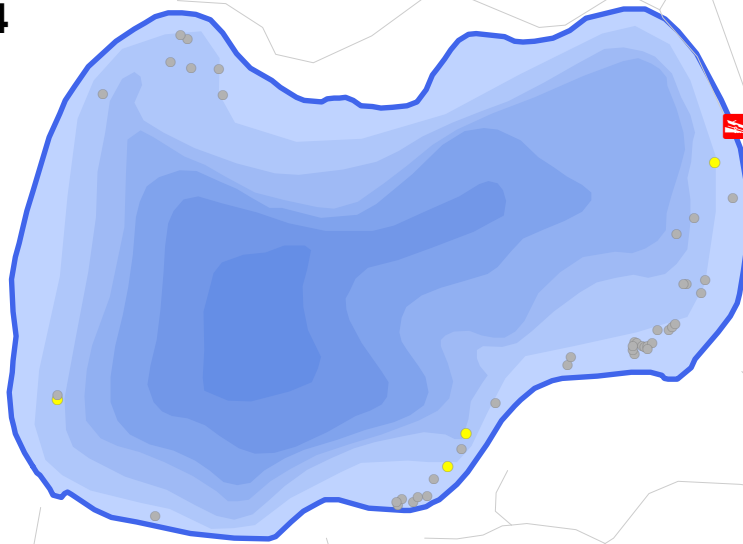
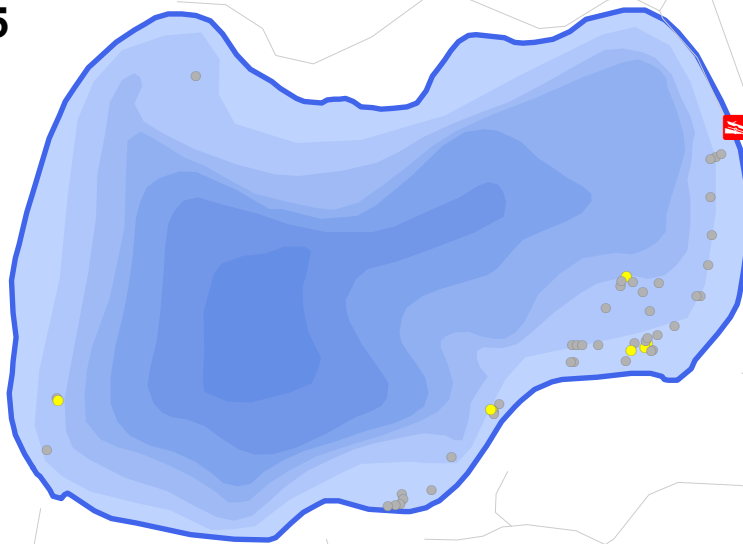


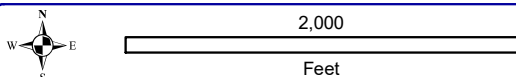
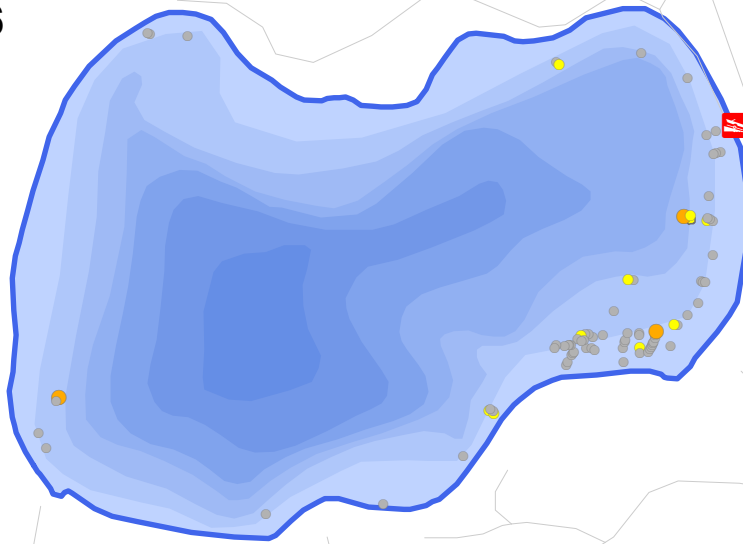
Late-Summer 2014



Late-Summer 2015



Early Season 2016



Onterra LLC
 Lake Management Planning
 815 Prosper Road
 De Pere, WI 54115
 920.338.8860
 www.onterra-eco.com

Sources:
 Roads, Hydro, and Bathymetry: WDNR
 Plant Surveys: Onterra, 2013-2015
 Map Date: June 28, 2016
 Filename: LoneStone_EWMSeries_2014-2016.mxd

Legend Eurasian Watermilfoil

- Highly Scattered
- Scattered
- Dominant
- Highly Dominant
- Surface Matting
- Single or Few Plants
- Clumps of Plants
- Small Plant Colony

Lone Stone Lake
 Oneida County

**2014-2016 EWM
 Survey Results**