

Report of Results

Lake Planning Grant

Lake Marinuka, Galesville, WI

Submitted by Don Lanik
8/13/03

LM-706



Over the past three years, the sixth-grade students of Galesville Elementary have done water quality testing, monthly lakeshore cleanups, and watched for signs of invasive species. Approximately 140 students have been involved in this project. For over half of the students this was their first exposure to Lake Marinuka. Many of the students had never even been fishing at the lake or spent any amount of time in canoes. It was definitely a learning experience that will stay with the students for years to come. Many students developed a sense of pride in what we were doing and also a sense of “ownership” of the lake. They became very upset with people who left trash on the shorelines.

Students also interviewed numerous older citizens concerning the history of the lake and its impact on the community. These interviews not only attained information, but established an intergenerational bridge that was exciting to witness. This part of the project is, at present time, unfinished. It was simply too large of a project to be completed by a single class. I intend to complete this in stages over the next two to three years.

The mapping of aquatic plants is also not completed. This was going to be done during the summer, but not enough students could be available at the times that I was available. We were also unable to complete the sedimentation study. It simply took too much classroom time and several times when it was scheduled, weather was too cold to have students out or the ice conditions were unsafe. I think we took on a task that was too much for 11 and 12 year olds to accomplish.

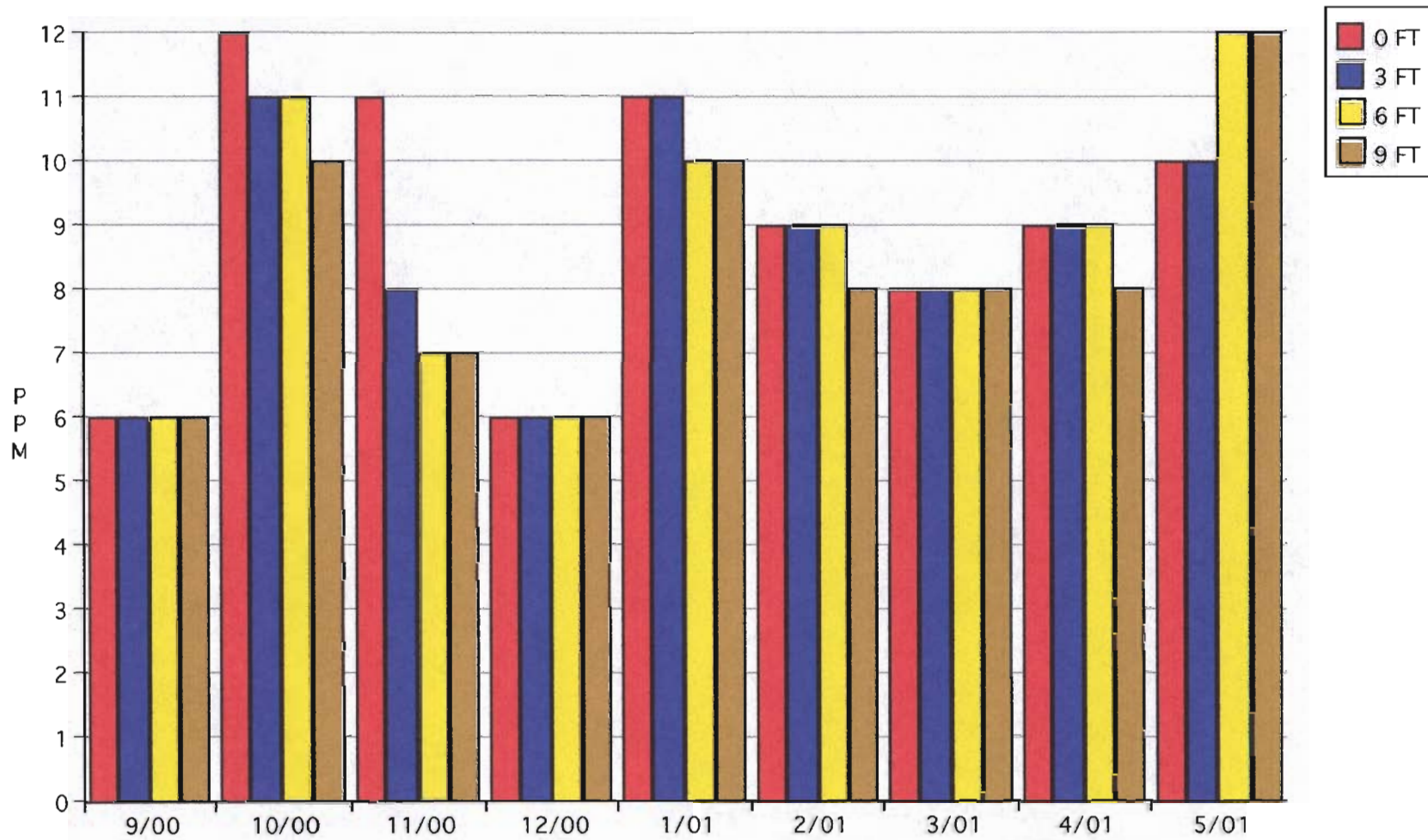
Students did complete 26 months of water quality testing. Graphs and charts of those results are attached. They found no evidence of zebra mussels, Eurasian milfoil, or purple loosestrife. They also did a monthly cleanup of the lake’s shoreline. Students also put together reports which were presented to the Lake Marinuka P & R District Committee. One example is included with this report.

Overall, I think that this was a valuable educational experience for the students. They learned a great deal about water quality and what affects people have on the lake. Students also developed skills in testing, working together cooperatively, and many showed evidence of developing leadership skills.

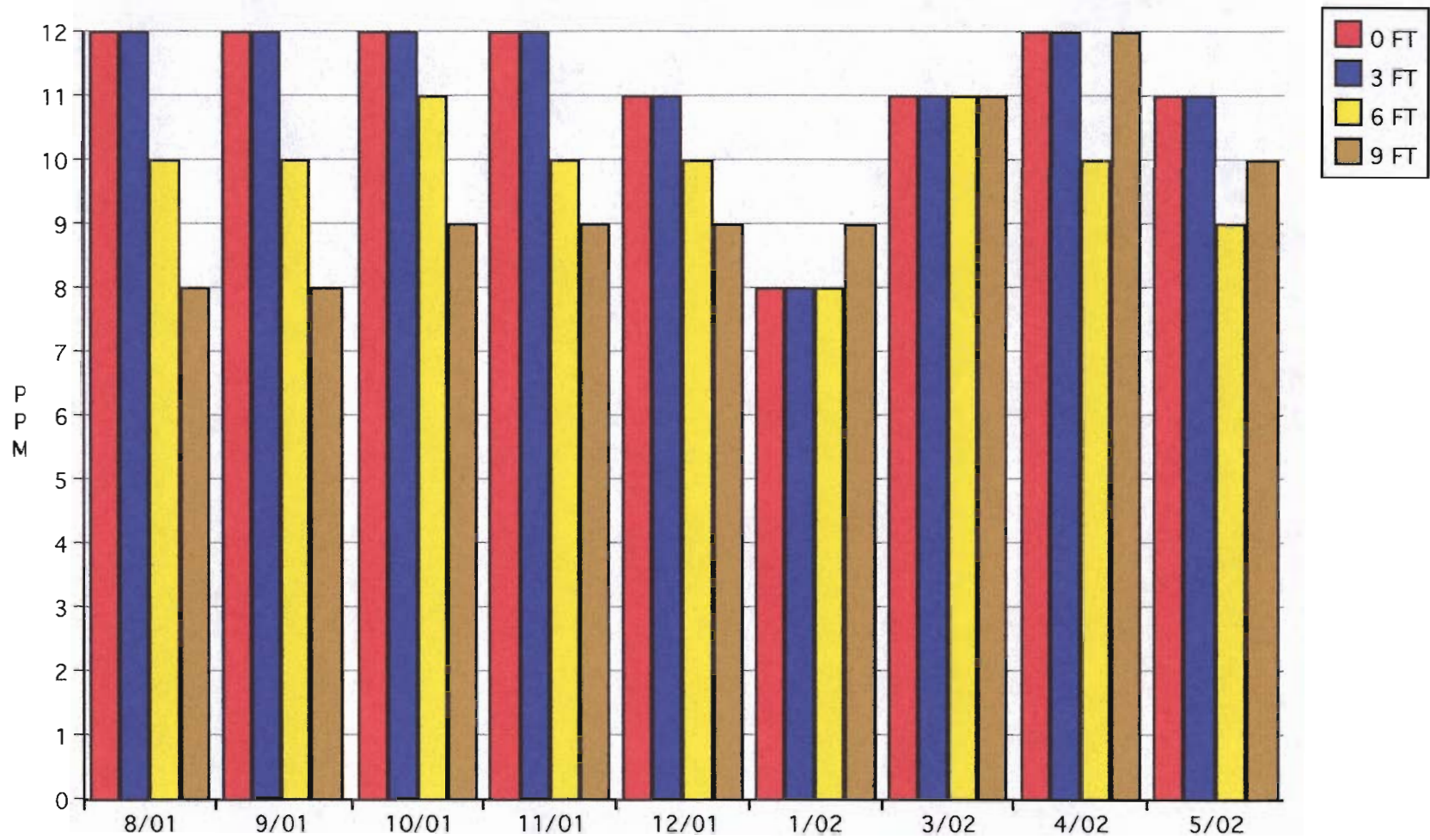
DISSOLVED OXYGEN
PPM
SEPTEMBER 2000 - MAY 2003

2000-01	AUG	SEPT	OCT	NOV	DEC	JAN	FEB	MAR	APRIL	MAY
0 FT		6	12	11	6	11	9	8	9	10
3 FT		6	11	8	6	11	9	8	9	10
6 FT		6	11	7	6	10	9	8	9	12
9 FT		6	10	7	6	10	8	8	8	12
2001-02	AUG	SEPT	OCT	NOV	DEC	JAN	FEB	MAR	APRIL	MAY
0 FT	12	12	12	12	11	8		11	12	11
3 FT	12	12	12	12	11	8		11	12	11
6 FT	10	10	11	10	10	8		11	10	9
9 FT	8	8	9	9	9	9		11	12	10
2002-03	AUG	SEPT	OCT	NOV	DEC	JAN	FEB	MAR	APRIL	MAY
0 FT		8	10	10	7	9	9		12	12
3 FT		8	8	10	9	9	9		12	12
6 FT		8	9	11	8	10	9		12	11
9 FT		9	8	10	10	11	9		12	11

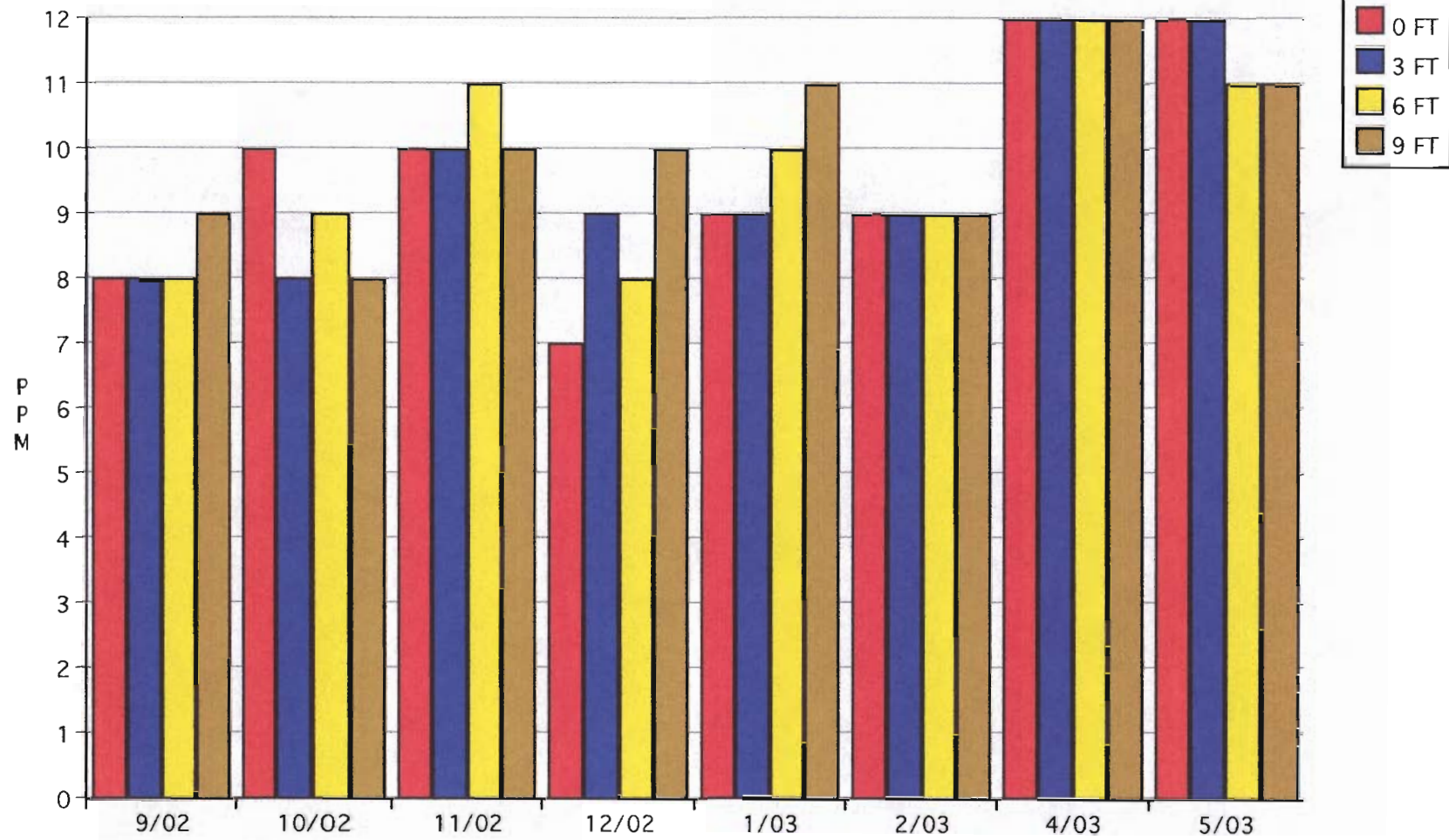
DISSOLVED OXYGEN 9/00 - 5/01



DISSOLVED OXYGEN 8/01-5/02



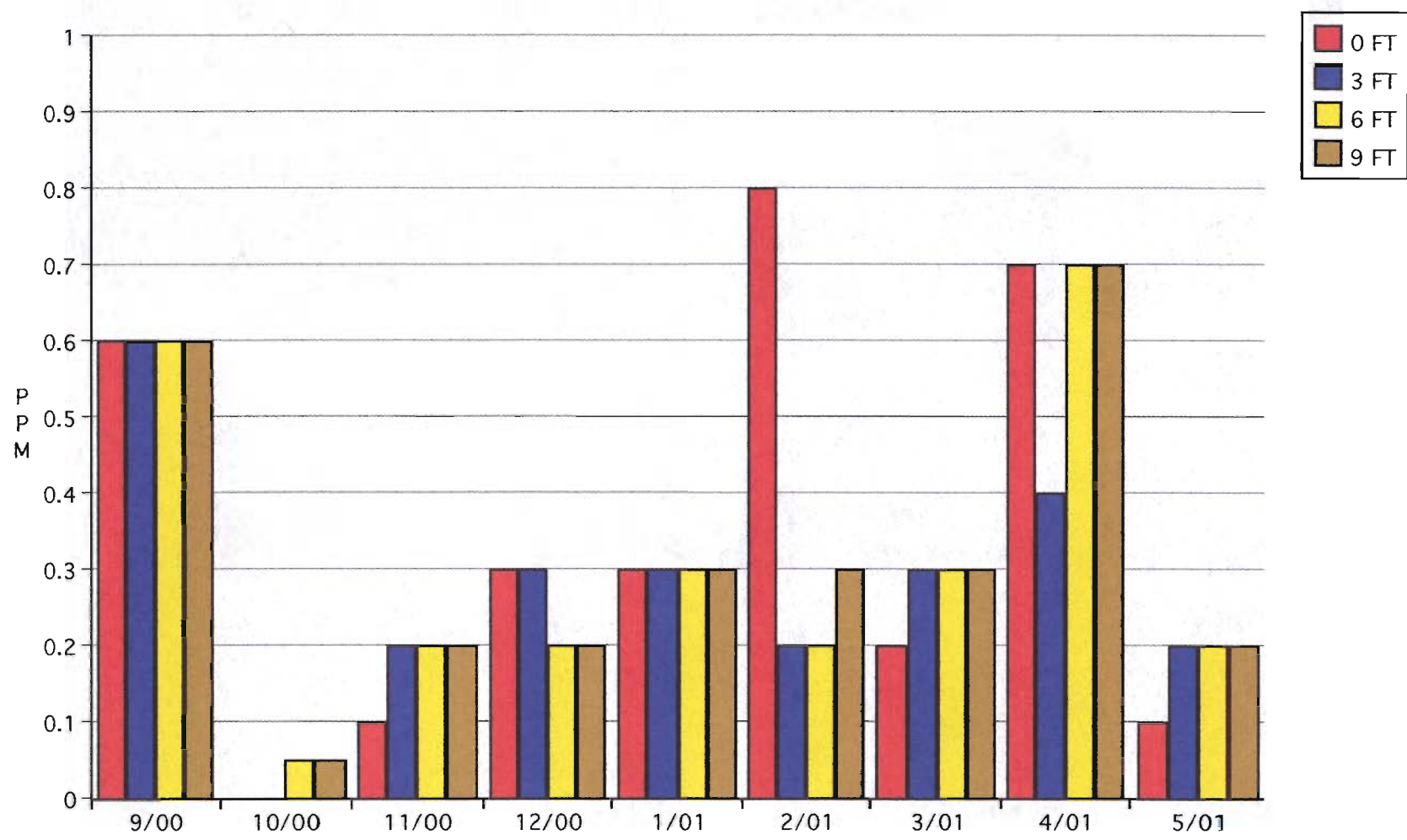
DISSOLVED OXYGEN 9/02 -5/ 03



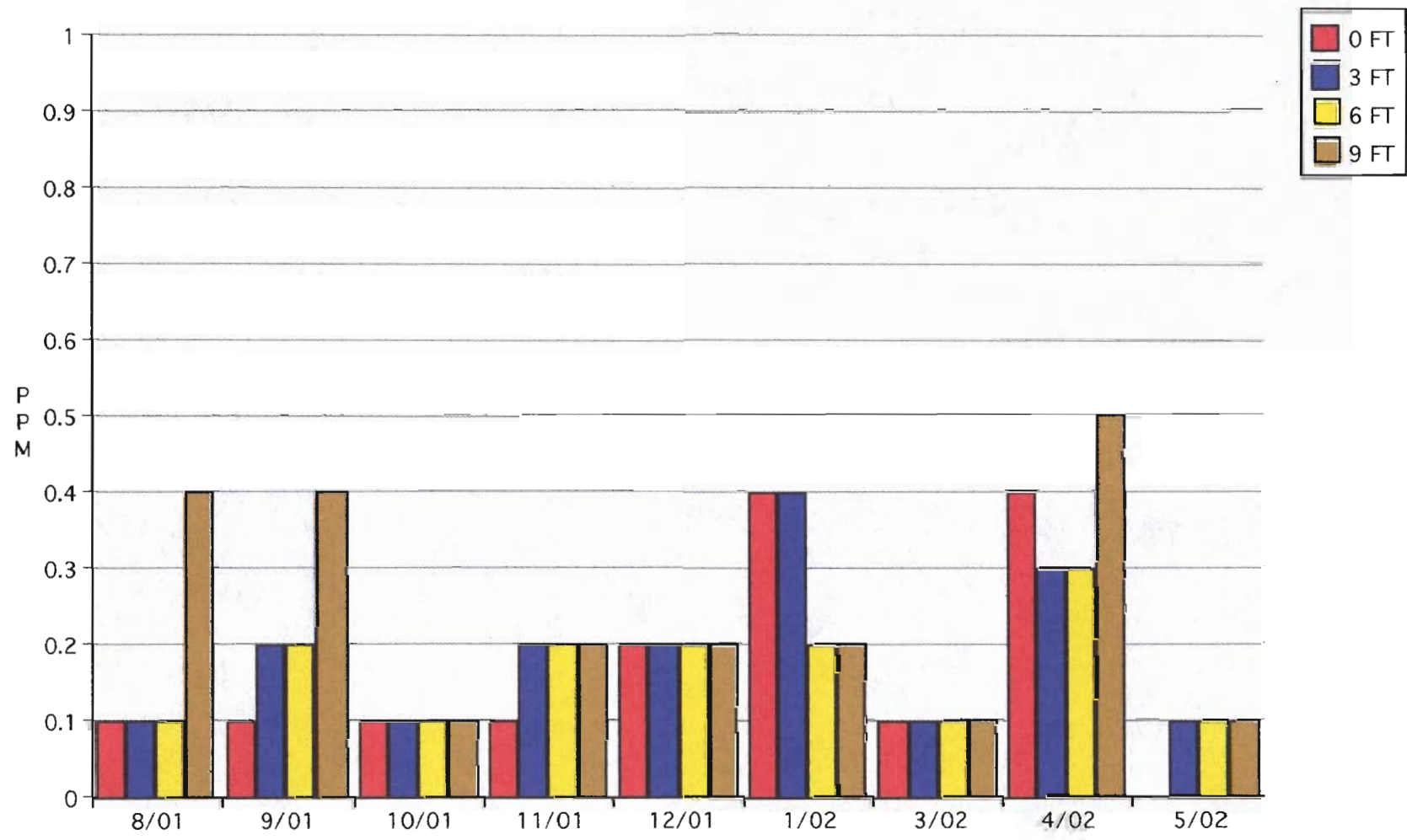
PHOSPHATES
PPM
SEPTEMBER 2000 - MAY 2003

2000-01	AUG	SEPT	OCT	NOV	DEC	JAN	FEB	MAR	APRIL	MAY
0 FT		0.6	0	0.1	0.3	0.3	0.8	0.2	0.7	0.1
3 FT		0.6	0	0.2	0.3	0.3	0.2	0.3	0.4	0.2
6 FT		0.6	0.05	0.2	0.2	0.3	0.2	0.3	0.7	0.2
9 FT		0.6	0.05	0.2	0.2	0.3	0.3	0.3	0.7	0.2
2001-02	AUG	SEPT	OCT	NOV	DEC	JAN	FEB	MAR	APRIL	MAY
0 FT	0.1	0.1	0.1	0.1	0.2	0.4		0.1	0.4	0
3 FT	0.1	0.2	0.1	0.2	0.2	0.4		0.1	0.3	0.1
6 FT	0.1	0.2	0.1	0.2	0.2	0.2		0.1	0.3	0.1
9 FT	0.4	0.4	0.1	0.2	0.2	0.2		0.1	0.5	0.1
2002-03	AUG	SEPT	OCT	NOV	DEC	JAN	FEB	MAR	APRIL	MAY
0 FT		0.6	0.1	0.1	0.1	0.1	0.1		0.4	0.1
3 FT		0.6	0.1	0.1	0.1	0.1	0.1		0.3	0.3
6 FT		0.6	0.1	0.1	0.1	0	0.1		0.2	0.4
9 FT		0.6	0.1	0.1	0.1	0	0.1		0.3	0.2

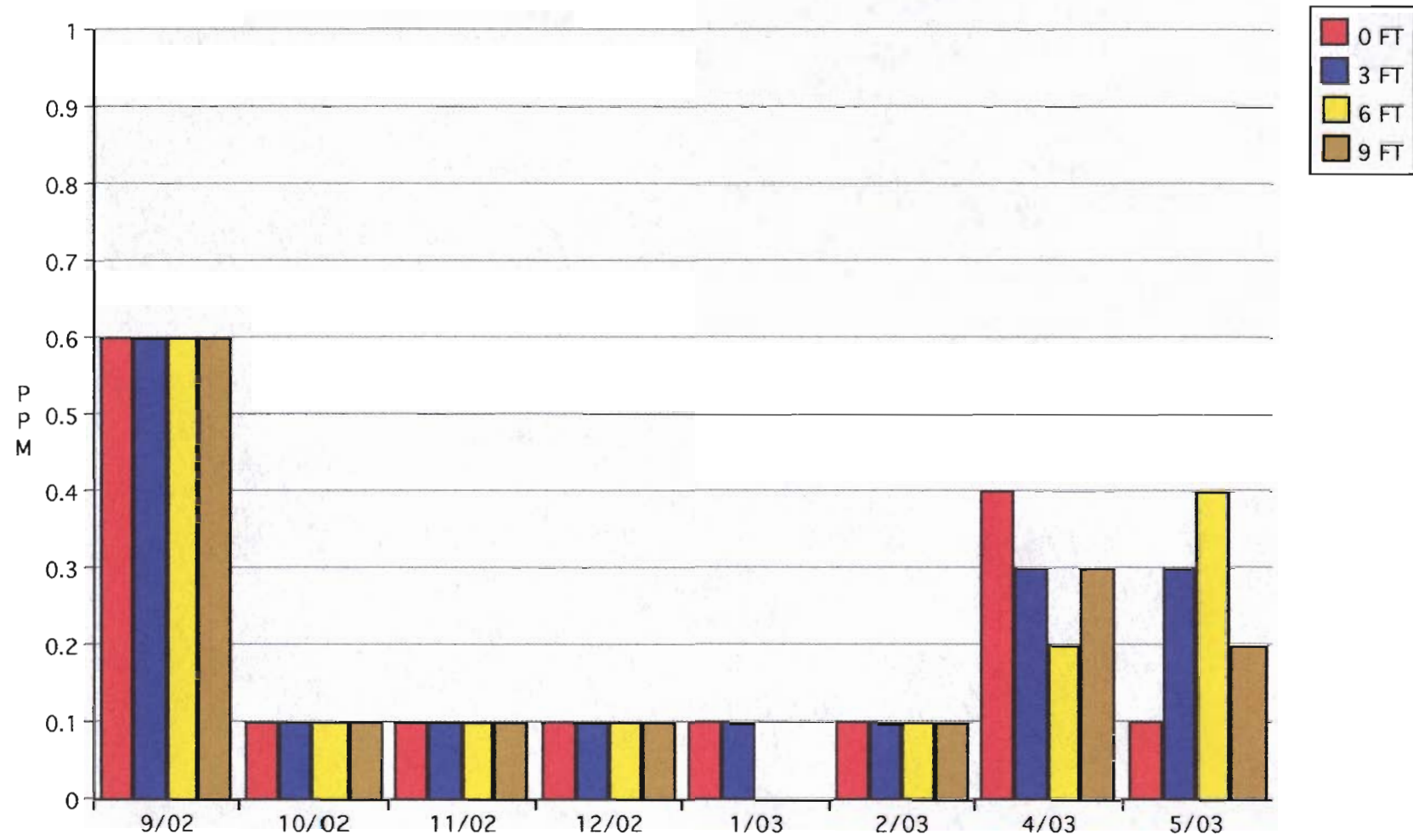
PHOSPHATES 9/00 - 5/01



PHOSPHATES 8/01 - 5/02



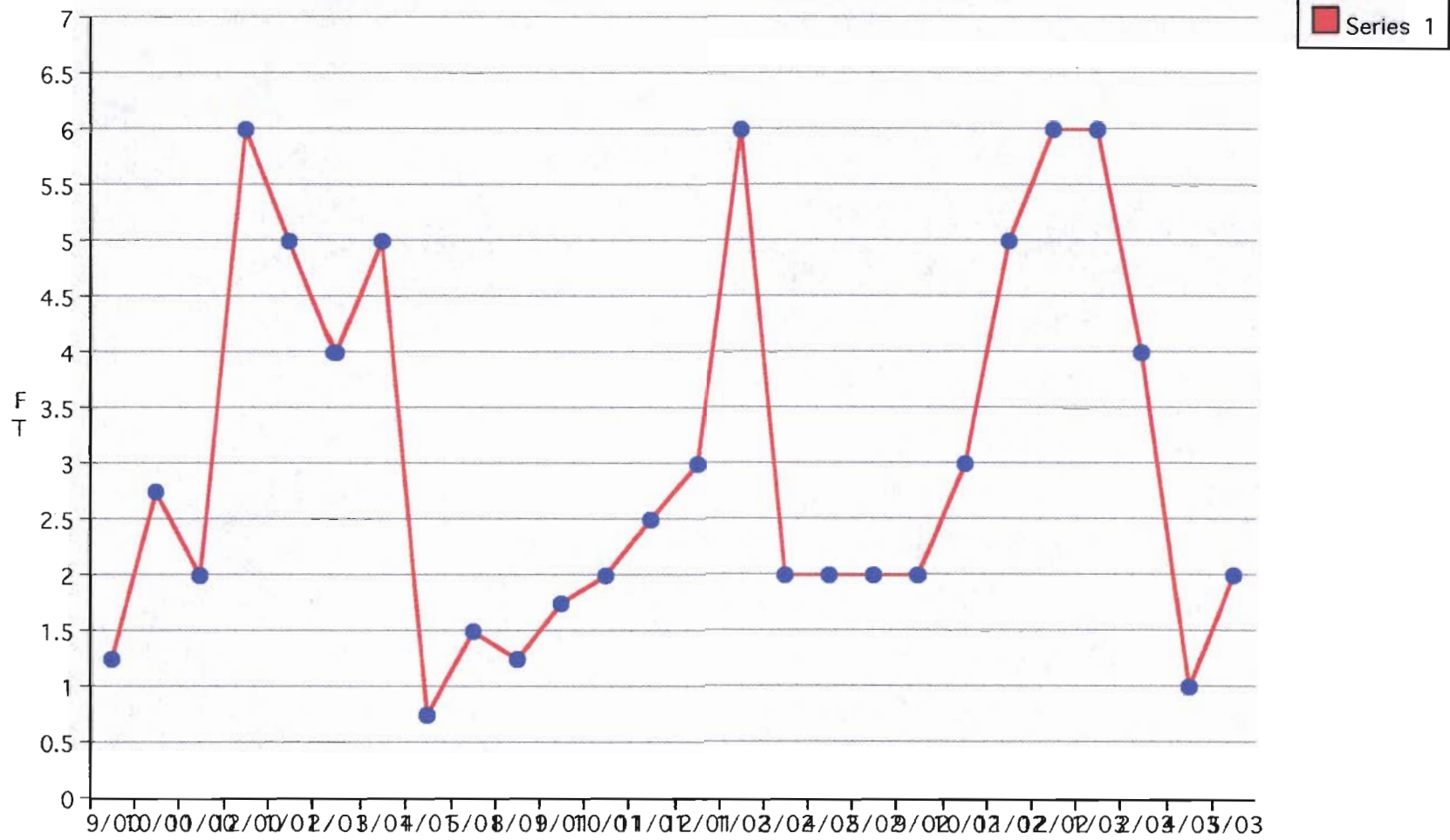
PHOSPHATES 9/02 - 5/03



SECCHI DISK READINGS
MEASURED IN FEET
SEPTEMBER 2000 - MAY 2003

	AUG	SEPT	OCT	NOV	DEC	JAN	FEB	MAR	APRIL	MAY
2000-01		1.25	2.75	2	6	5	4	5	.75	1.5
2001-02	1.25	1.75	2	2.5	3	6		2	2	2
2002-03		2	3	5	6	6	4		1	2

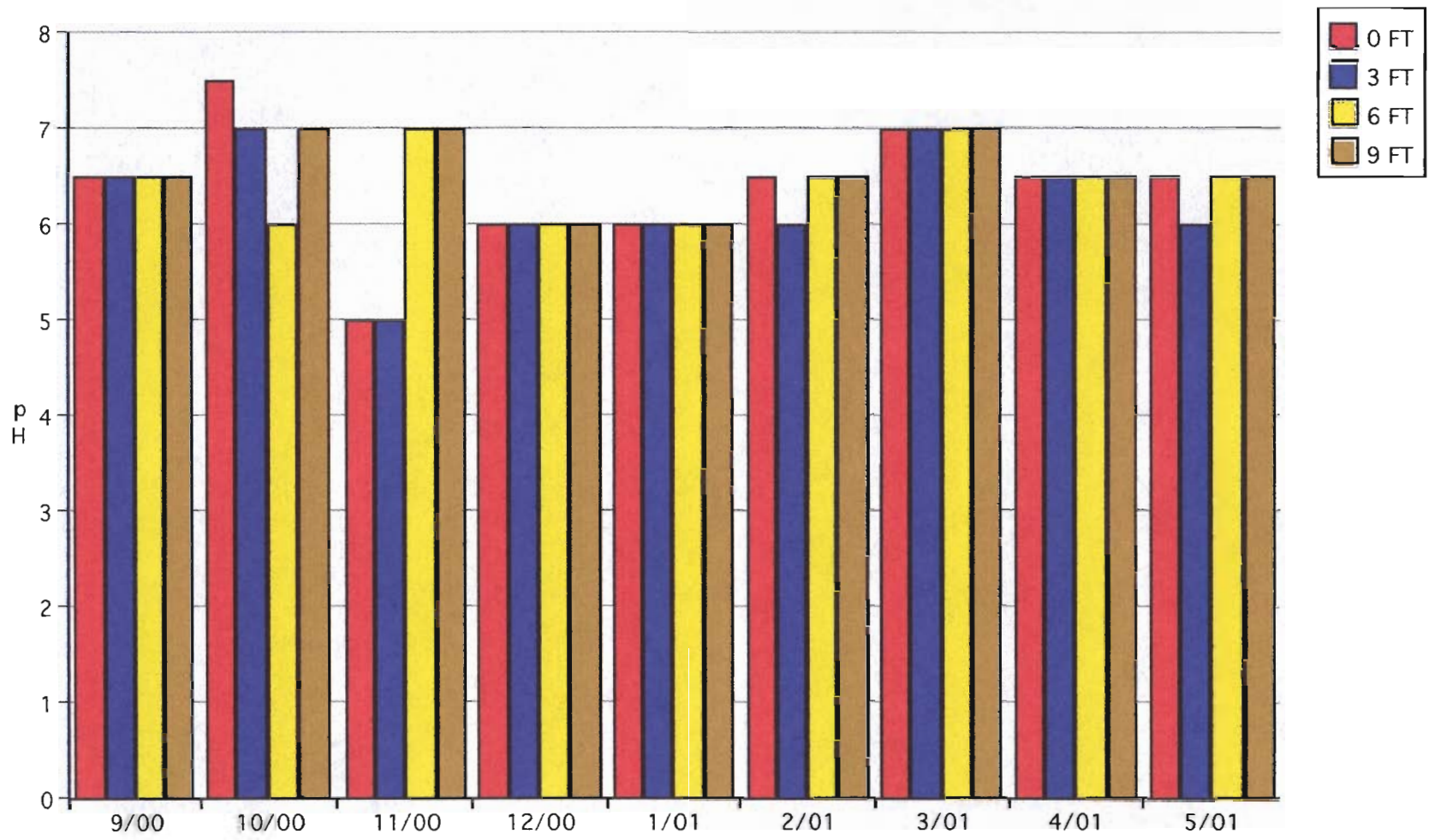
SECCHI DISK READINGS 9/00 - 5/03



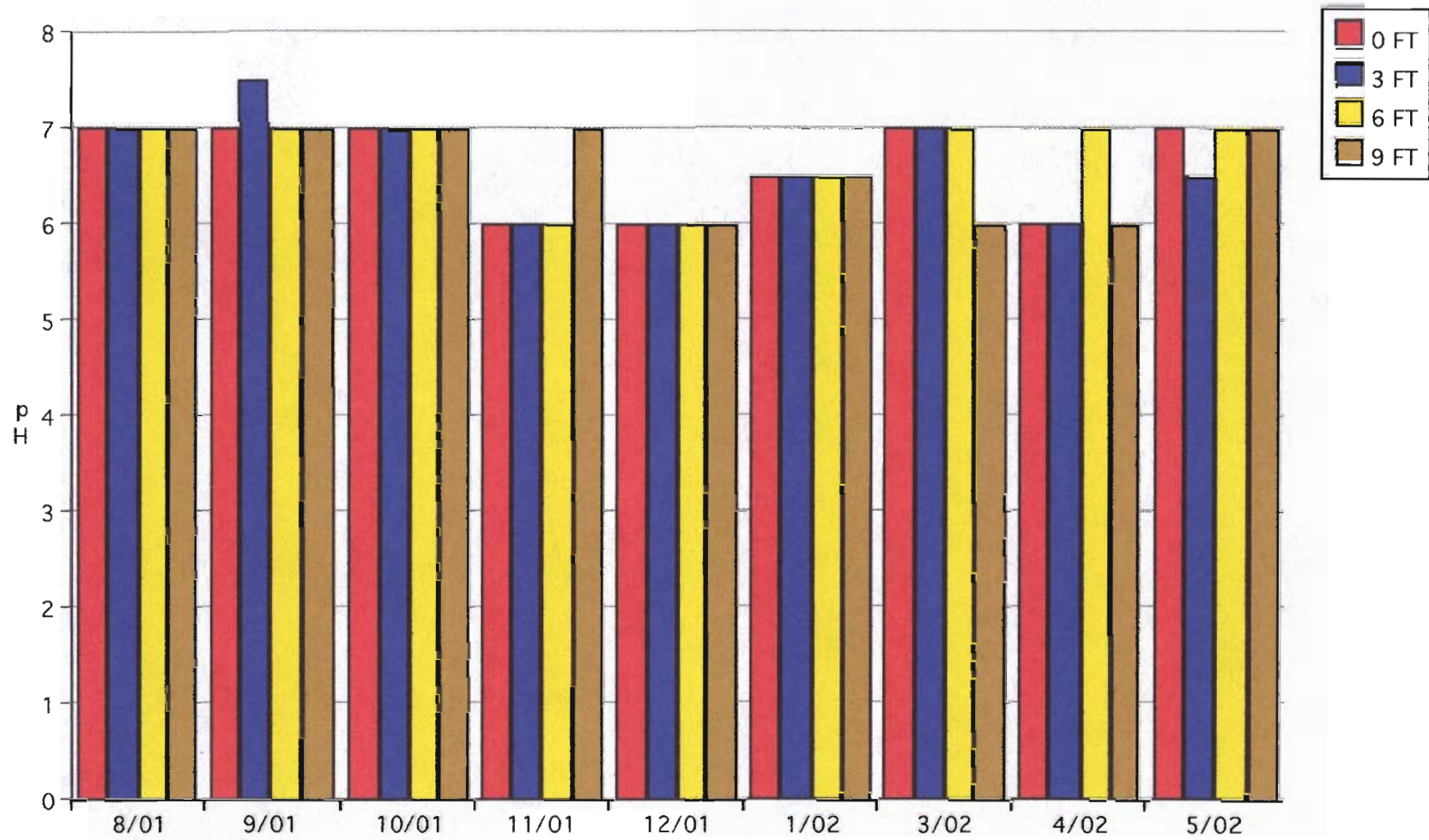
pH
SEPTEMBER 2000 - MAY 2003

2000-01	AUG	SEPT	OCT	NOV	DEC	JAN	FEB	MAR	APRIL	MAY
0 FT		6.5	7.5	5	6	6	6.5	7	6.5	6.5
3 FT		6.5	7	5	6	6	6	7	6.5	6
6 FT		6.5	6	7	6	6	6.5	7	6.5	6.5
9 FT		6.5	7	7	6	6	6.5	7	6.5	6.5
2001-02	AUG	SEPT	OCT	NOV	DEC	JAN	FEB	MAR	APRIL	MAY
0 FT	7	7	7	6	6	6.5		7	6	7
3 FT	7	7.5	7	6	6	6.5		7	6	6.5
6 FT	7	7	7	6	6	6.5		7	7	7
9 FT	7	7	7	7	6	6.5		6	6	7
2002-03	AUG	SEPT	OCT	NOV	DEC	JAN	FEB	MAR	APRIL	MAY
0 FT		6	7	6	6	6	6		6	6.5
3 FT		6	6	6	6	6	6		6	6.5
6 FT		6	6	6	6	6	6		6	6.5
9 FT		6	5	5	6	6	6		6	6.5

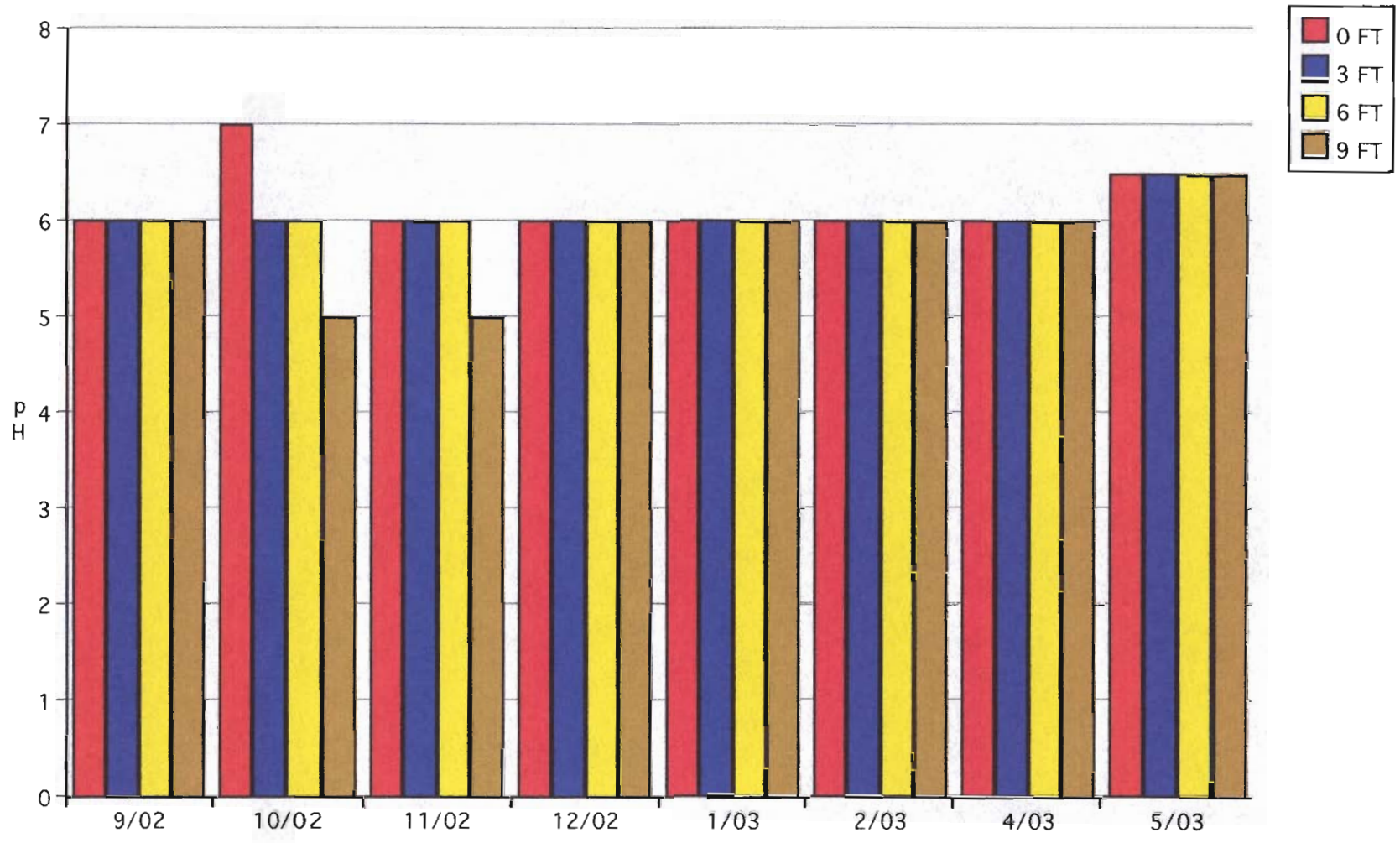
pH 9/00 - 5/01



pH 8/01 - 5/02



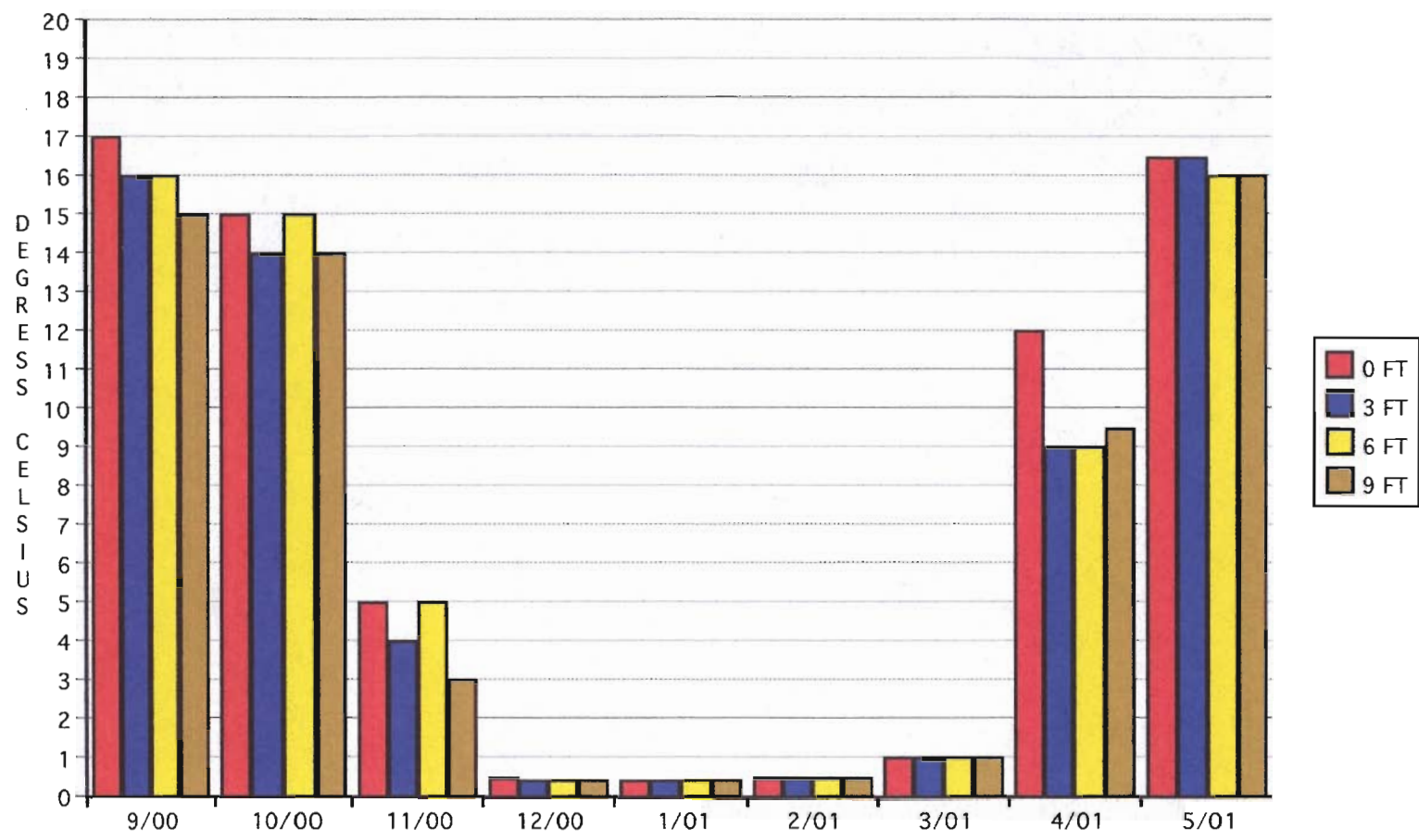
pH 9/02- 5/03



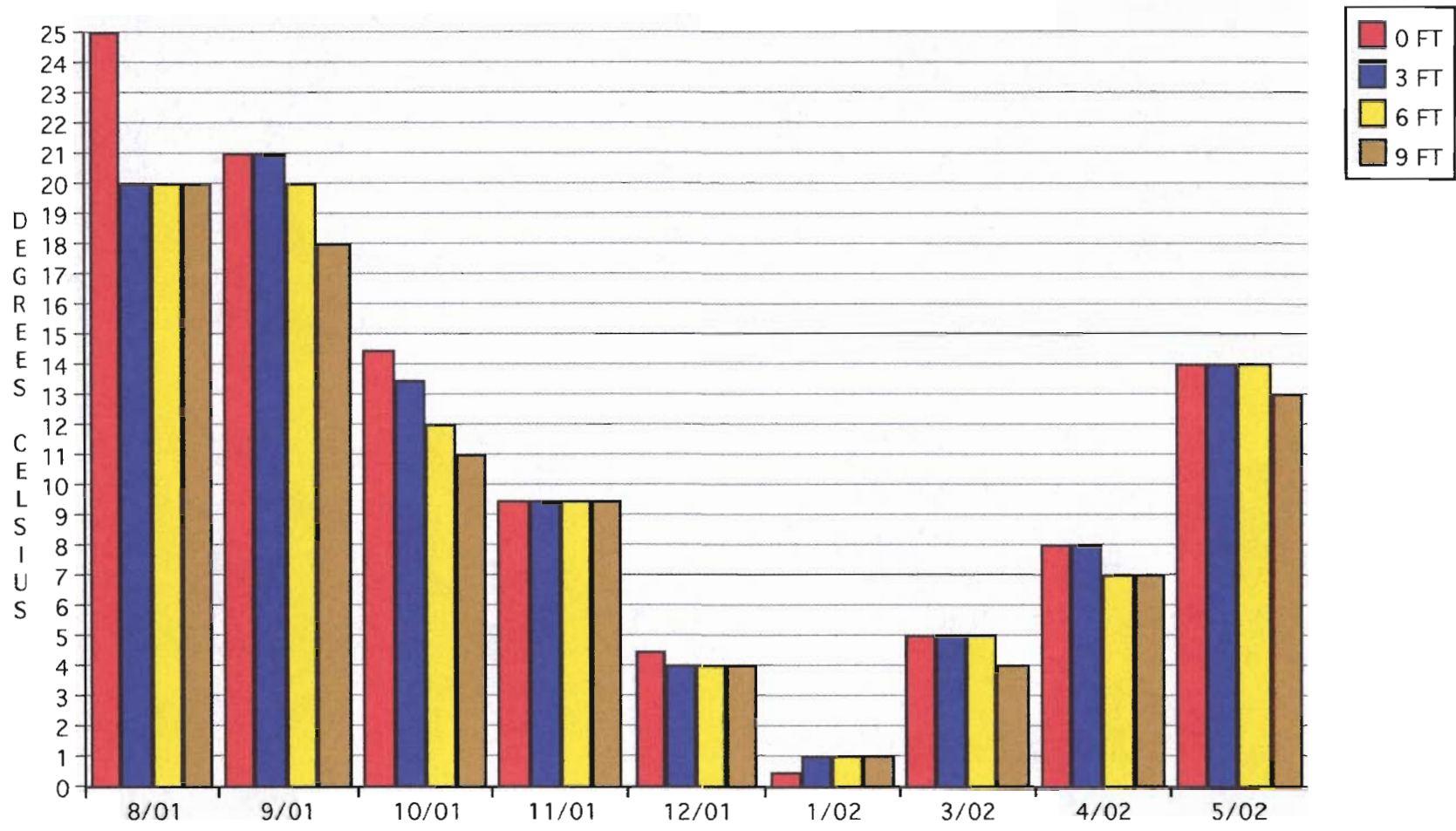
WATER TEMPERATURE
DEGREES CELSIUS
SEPTEMBER 2000 - MAY 2003

2000-01	AUG	SEPT	OCT	NOV	DEC	JAN	FEB	MAR	APRIL	MAY
0 FT		17	15	5	0.5	0.4	0.5	1	12	16.5
3 FT		16	14	4	0.4	0.4	0.5	1	9	16.5
6 FT		16	15	5	0.4	0.4	0.5	1	9	16
9 FT		15	14	3	0.4	0.4	0.5	1	9.5	16
2001-02	AUG	SEPT	OCT	NOV	DEC	JAN	FEB	MAR	APRIL	MAY
0 FT	25	21	14.5	9.5	4.5	0.5		5	8	14
3 FT	20	21	13.5	9.5	4	1		5	8	14
6 FT	20	20	12	9.5	4	1		5	7	14
9 FT	20	18	11	9.5	4	1		4	7	13
2002-03	AUG	SEPT	OCT	NOV	DEC	JAN	FEB	MAR	APRIL	MAY
0 FT		12	5	3	0.5	0.5	0.5		8	18
3 FT		12	5	3	2	2	0.5		7	14
6 FT		12	5	3	1	1	0.5		7	14
9 FT		12	5	3	2	2	0.5		7	14

WATER TEMPERATURE 9/00 - 5/01



WATER TEMPERATURE 8/01 - 5/02



WATER TEMPERATURE 9/02 - 5/03

