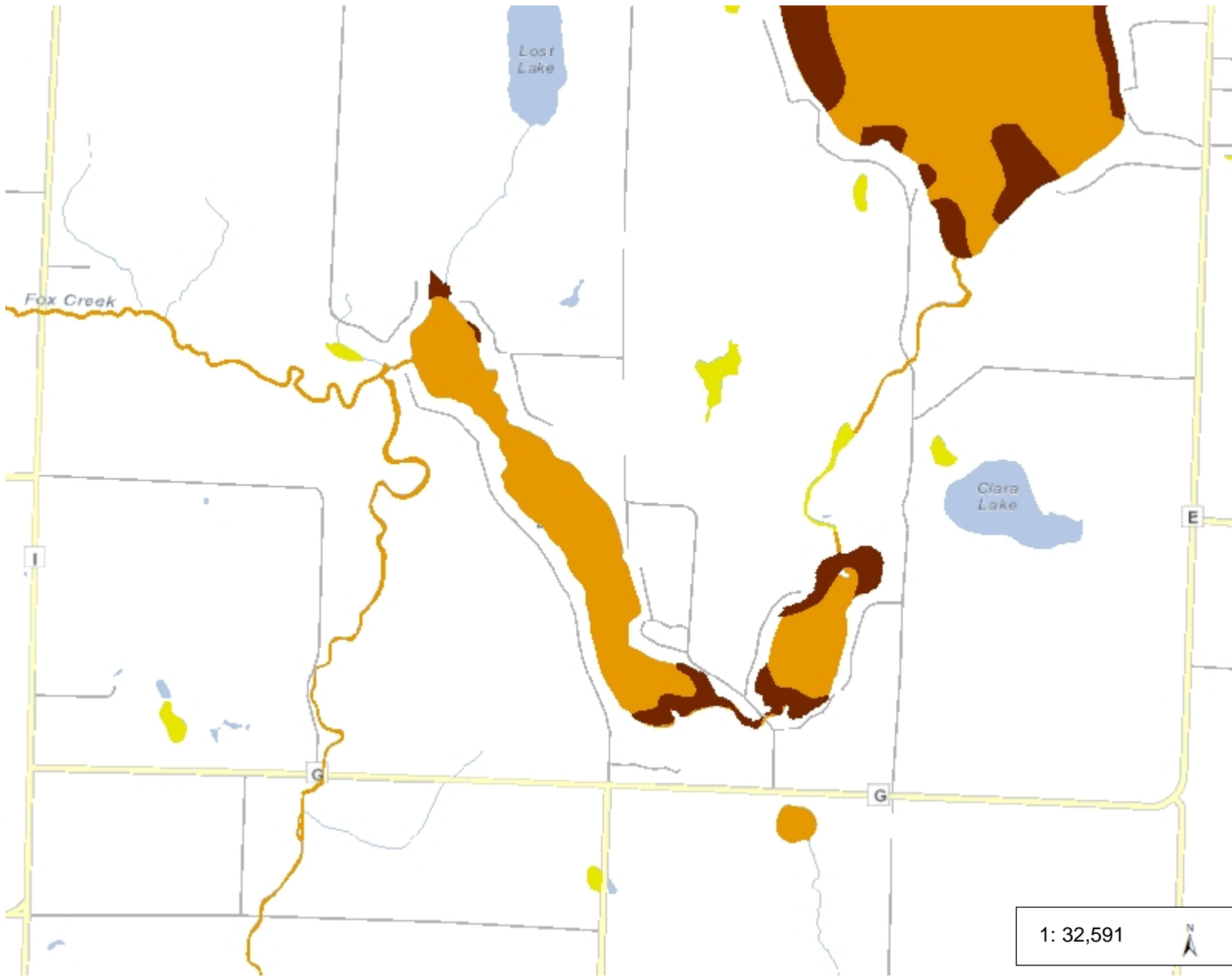




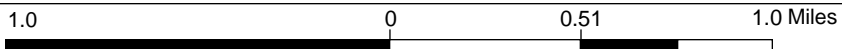
Surface Water Data Viewer Map



Legend

- PRF Sensitive Rivers
- PRF Other River Public Rights
- PRF Sensitive Areas of Lakes
- PRF Other Public Rights Feat
- ASNRI Wild and Scenic Rivers
- ASNRI Outstanding and Excep
- ASNRI Trout Streams
- ASNRI Wild Rice Streams
- ASNRI Quality Wetland Stream
- ASNRI Endangered Threatene Concern Waters
- ASNRI Outstanding and Excep
- ASNRI Quality Wetland Areas
- ASNRI Wild Rice Areas
- ASNRI Trout Spring Ponds
- ASNRI Endangered Threatene Concern Lakes
- State Natural Areas
- PNW Musky Streams
- PNW Sturgeon Streams
- PNW Perennial Trout Stream 1
- PNW Musky Areas
- PNW Sturgeon Areas
- PNW Walleye Areas
- PNW Lakes Less Than 50 Acr
- Rivers and Streams
- Open Water

1: 32,591



NAD_1983_HARN_Wisconsin_TM
© Latitude Geographics Group Ltd.

DISCLAIMER: The information shown on these maps has been obtained from various sources, and are of varying age, reliability and resolution. These maps are not intended to be used for navigation, nor are these maps an authoritative source of information about legal land ownership or public access. No warranty, expressed or implied, is made regarding accuracy, applicability for a particular use, completeness, or legality of the information depicted on this map. For more information, see the DNR Legal Notices web page: <http://dnr.wi.gov/org/legal/>

Notes