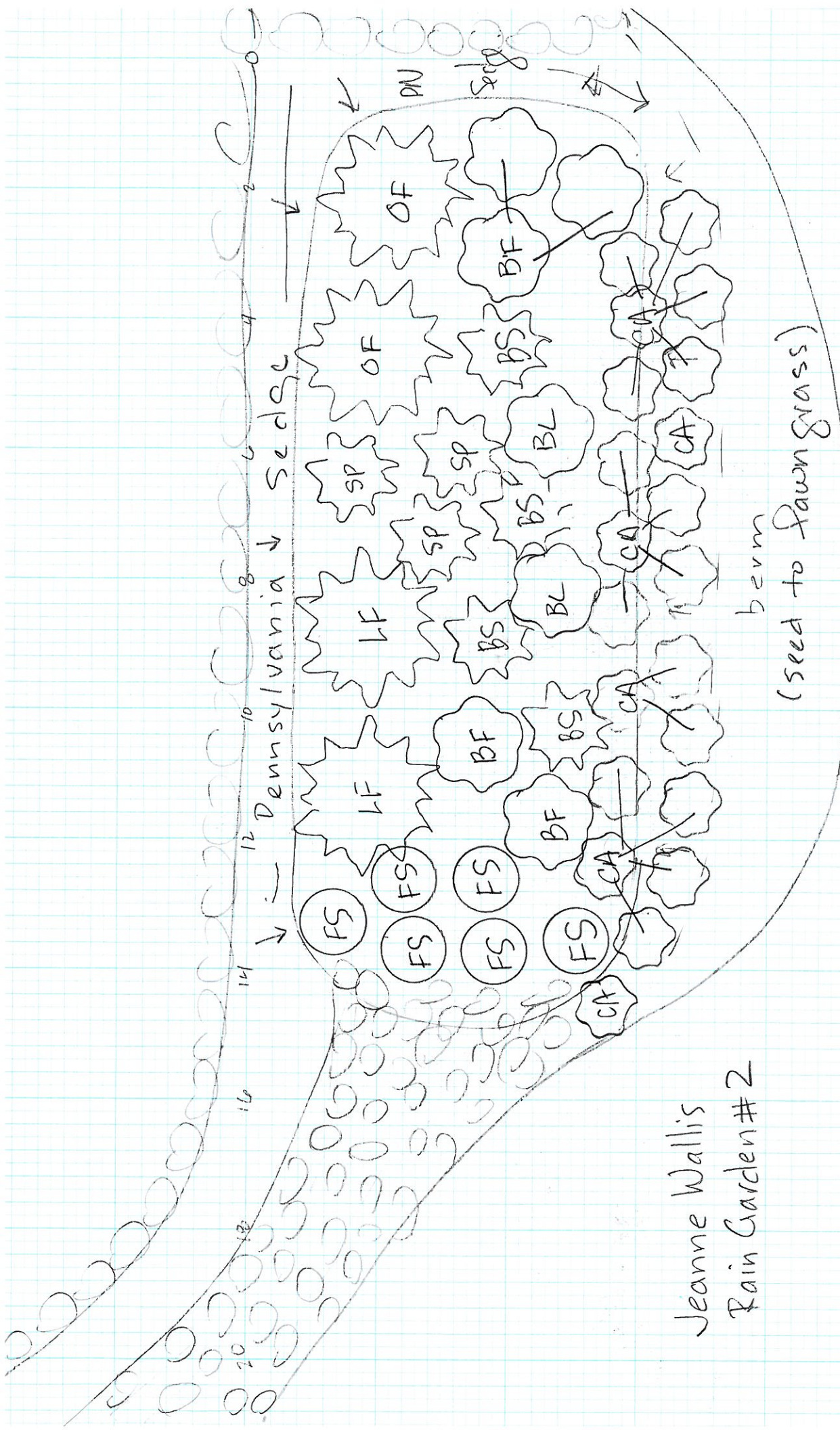
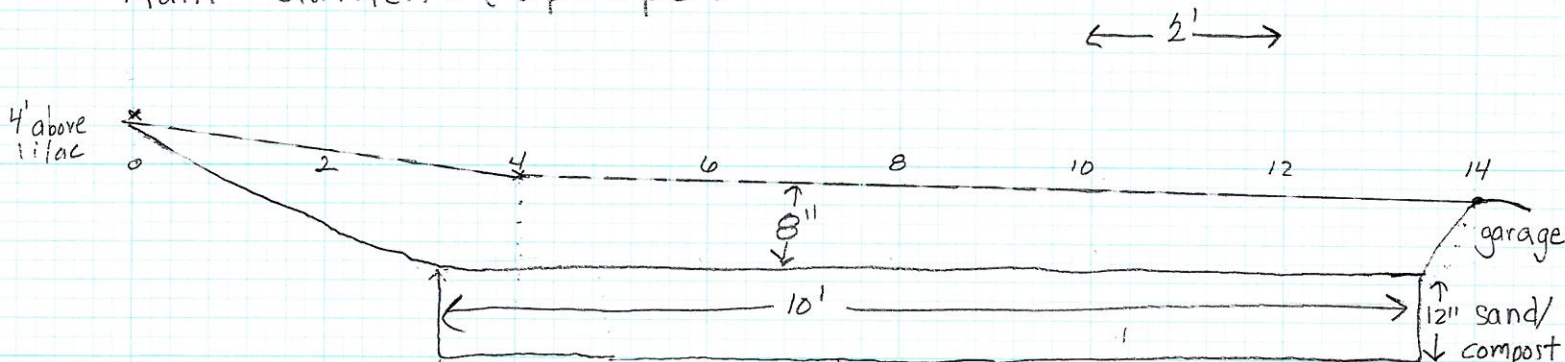


Jeanne Wallis
 1674 Patterson Ct

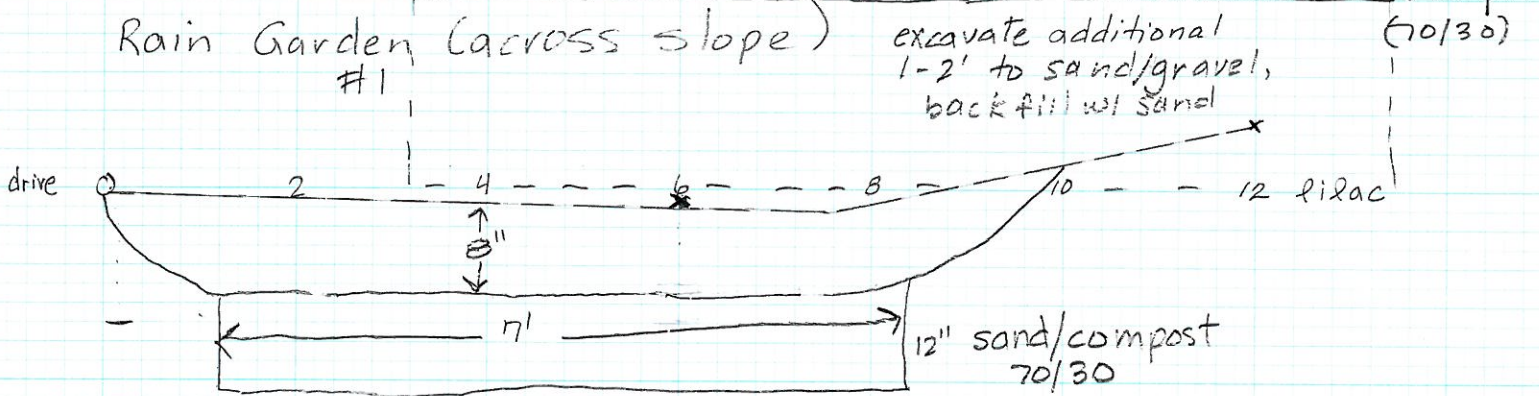


Jeanne Wallis
 Rain Garden #2

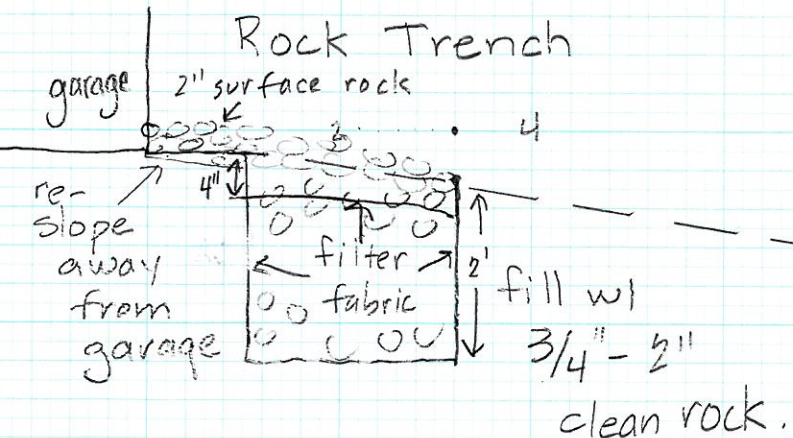
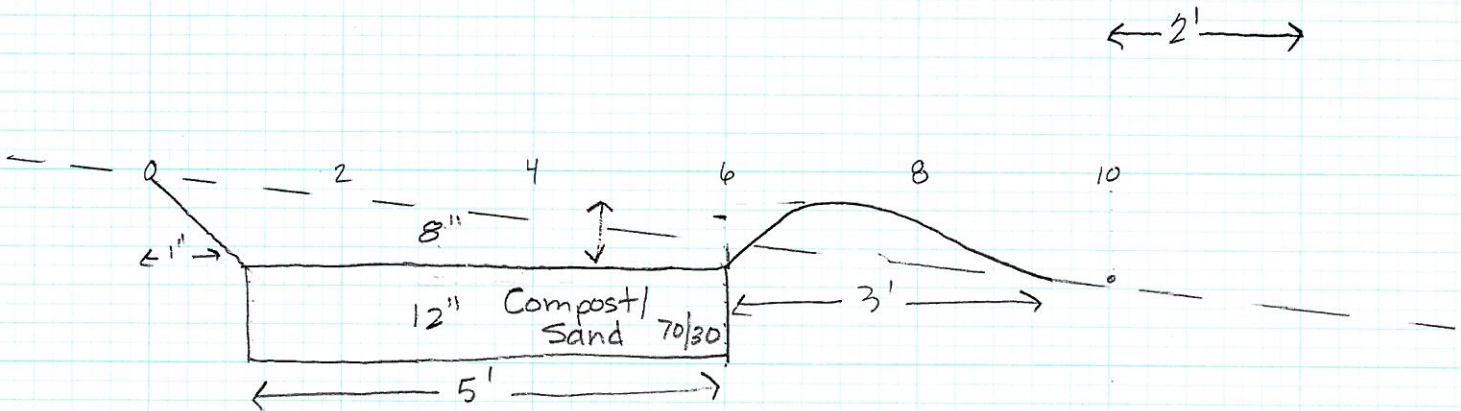
Rain Garden #1 (upslope)



Rain Garden #1 (across slope)



Rain Garden #2 (upslope)



Jeanne Wallis
1674 Patterson Ct.

Rain Garden Plant List - Wallis

	Common Name	Scientific Name	Height	Bloom Time	Bloom Color
Flowers					
WG	Wild ginger	<i>Asarum canadense</i>	4 to 8 in	May to June	Red
CA	Canada anemone	<i>Anemone Canadensis</i>	12 inches	May to July	White
BF	Blue flag iris	<i>Iris versicolor</i>	18 to 30 in	June	Blue
BW	Butterfly weed	<i>Asclepias tuberosa</i>	24 to 36 in	June-Sept	Orange
PP	Pale purple coneflower	<i>Echinacea pallida</i>	24 to 36 in	July to Aug	Lavender
BS	Tall blazing star	<i>Liatris pycnostachya</i>	24 to 36 in	July to Sept	Purple
BL	Blue lobelia	<i>Lobelia siphilitica</i>	to 36 in	July to Oct	Blue
SP	Smooth penstemon	<i>Penstemon digitalis</i>	36 inches	June to July	White
Ferns					
LF	Lady fern	<i>Athyrium filix-femina</i>	24 in	None	None
OF	Ostrich fern	<i>Matteuccia struthiopteris</i>	24 in	None	None
Sedges and Grasses					
PN	Pennsylvania sedge	<i>Carex pensylvanica</i>	6 to 18 in	NA	NA
FX	Fox sedge	<i>Carex vulpinoidea</i>	12 to 36 in	NA	NA
PD	Prairie dropseed	<i>Sporobolus heterolepis</i>	24 to 36 in	NA	NA
Shrubs					
SB	Snowberry	<i>Symphoricarpos albus</i>	2 to 3 ft	June-July	White

Rain Garden Plant Quantities - Wallis

	Common Name	Scientific Name	Rain Garden #1			Rain Garden #2			
			Seedlings	3" Pots	4-6" Pots	1 gallon	Seedlings	3" Pots	4-6" Pots
Flowers									
WG	Wild ginger	<i>Asarum canadense</i>		22					
CA	Canada anemone	<i>Anemone Canadensis</i>		14			21		
BF	Blue flag iris	<i>Iris versicolor</i>						5	
BW	Butterfly weed	<i>Asclepias tuberosa</i>			3				
PP	Pale purple coneflower	<i>Echinacea pallida</i>		3					
BS	Tall blazing star	<i>Liatris pycnostachya</i>					4		
BL	Blue lobelia	<i>Lobelia siphilitica</i>		2			2		
SP	Smooth penstemon	<i>Penstemon digitalis</i>		3			3		
Ferns									
LF	Lady fern	<i>Athyrium filix-femina</i>						2	
OF	Ostrich fern	<i>Matteuccia struthiopteris</i>						2	
Sedges and Grasses									
PN	Pennsylvania sedge	<i>Carex pensylvanica</i>					20		
FX	Fox Sedge	<i>Carex vulpinoidea</i>						6	
PD	Prairie dropseed	<i>Sporobolus heterolepis</i>		6					
Shrubs									
SB	Snowberry	<i>Symphoricarpos albus</i>				2			
				50	3	2	20	36	9

Plant seedlings with 12" spacing

Plant 3 inch pots with 16" spacing

Plant 6 inch pots with 18" spacing

Plant ferns and shrubs as indicated on plan

Pot sizes can be substituted with spacing indicated

Project Quantities

Jeanne Wallis
1674 Patterson Court

	Materials	Quantity	Cost per unit	Total Cost
Rain Garden #1 - 70 ft2 + 48ft2 (slopes)				
	1 gallon shrub	2		
	3" Pots	50		
	4-6" Pots	3		
	Wood mulch (3")	1.1 yards		
	70/30 sand compost	2.6 yards		
	sand (70 ft2 X 2')	5.2 yards		
	Soil amendment			
	Excavation			
	Grass seed			
Rain Garden #2 - 70 ft2 + 33 ft2 (slopes)				
	Seedlings	20		
	3" Pots	36		
	4-6" Pots	9		
	Wood mulch (3")	1 yard		
	70/30 sand compost	2.6 yards		
	Soil amendment			
	Erosion blanket	100 ft2		
	Excavation			
	Grass seed			
Rock Swale				
4.5' X 50' X 0.5'	4-6" rock	4.2 yards		
	filter fabric (8 ounce)	225 ft2		
Rock Trench				
	filter fabric (8 ounce)	200 ft2		
2' X 2' X 24'	3/4" - 2" rock	3.5 yards		
2" X 1' X 24'	rock near house	.2 yards		