

Frequently Asked Questions About Clean Angling:

- 1. On a typical day of fishing in southwest Wisconsin, I fish three or four streams, maybe more. Do I really need to disinfect my gear after fishing each one?**

Answer: New Zealand mudsnails were recently discovered in the Driftless Area and are notorious for being transported on the waders and boots of anglers from one stream to another. Other invasives that detract from the fishing experience (such as Wild Parsnip, Reed Canary Grass, and Japanese hops) spread between popular fishing spots via seeds on wading boots. It is Wisconsin state law that you inspect and remove all mud, plant material, and water from your equipment prior to leaving a waterbody, or face a stiff fine. As our streams are presently free of Didymo you are not required (at this time) to bleach your waders and boots between streams.

- 2. How can I possibly remove all of the dirt from my waders and boots when hopping from stream to stream?**

Answer: One simple way anglers can limit the spread of invasive species between streams is to carry a stiff synthetic scrub brush in your vehicle or wader bag. Just prior to moving to another stream, take a minute to brush off your boots and waders, including the insides, laces and tongue. This doesn't guarantee that you won't transmit invasives to a new stream, but it is all about minimizing risk, and if you care about protecting the streams you fish, you need to do your part to ensure you're practicing clean angling. If you wish to more thoroughly clean your gear, use a pump-sprayer filled with clean tap water to rinse your waders and boots AFTER you've given them a good scrubbing with a brush.

- 3. I have a trip planned to Montana this summer. Many of the rivers I plan to fish are infested with AIS. What should I do to prevent further spreading this stuff?**

Answer: While fishing out west, if possible, plan to visit uninfested rivers first. Ask guides or shops which rivers are infested with invasive species—they will know. After fishing an infested river, you are at a HIGH RISK of spreading invasive species on your gear! HIGH RISK anglers should follow one of the three decontamination recommendations on the right in the figure below: soak gear in a mild bleach solution for ten minutes, freeze gear, or allow gear to dry completely for five days minimum after brushing off mud and debris. Upon returning to Wisconsin, it is IMPERATIVE that you follow those same steps. Or do as many others do, keep a pair of waders and boots for strictly fishing in Wisconsin and another for out-of-state fishing, which is the safest bet, but shouldn't preclude cleaning your gear.

- 4. I refuse to give up my felt-soled wading boots. Felt is not the only culprit and if I fall in a river, my fishing days are done. What steps can I take to minimize the risk of my spreading AIS on my felt-soled boots?**

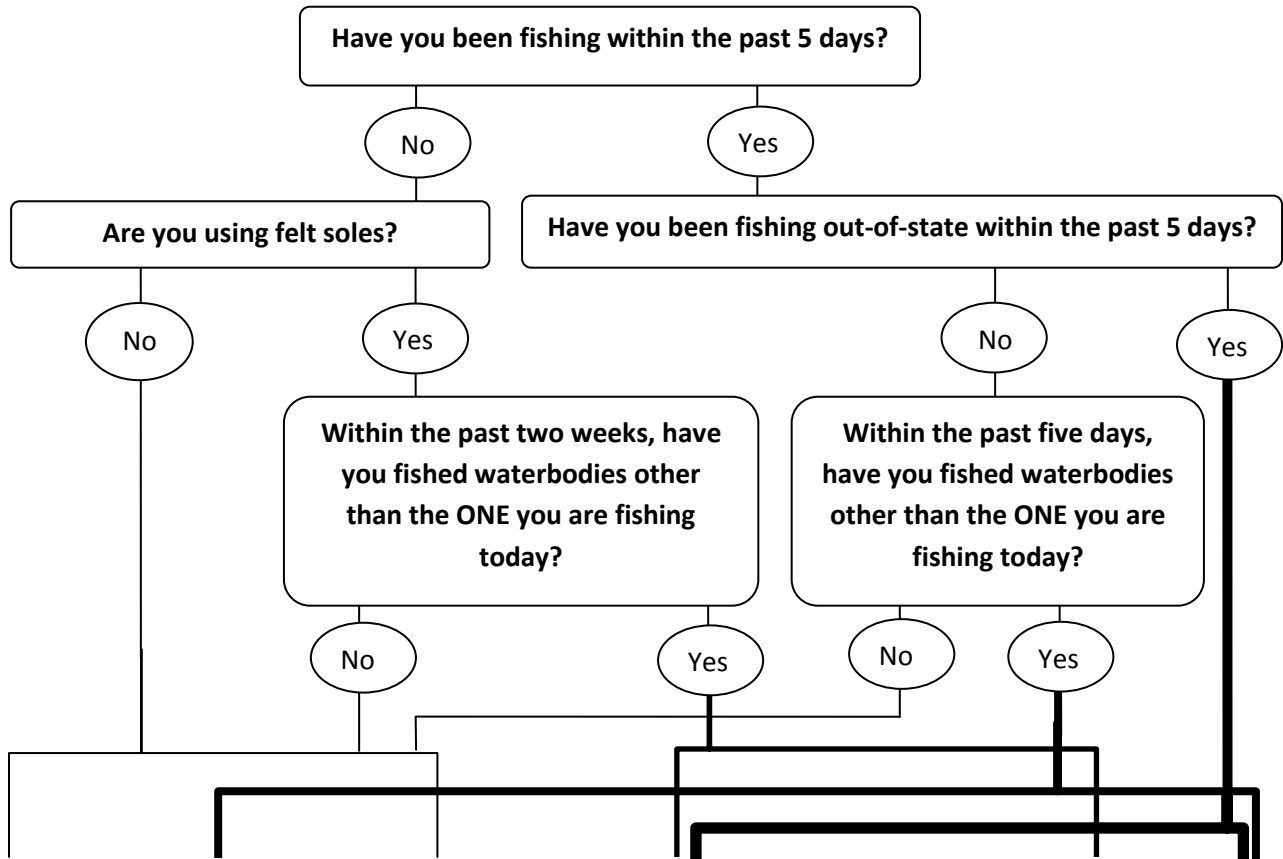
Answer: The most important thing to remember is that felt takes a long time to dry, it is difficult to clean and often disinfection solution does not fully penetrate the felt to kill invasives. This is why rubber is the better option when it comes to preventing the spread of invasives! However, if you must use felt, you should use a pressure sprayer (like the small herbicide applicators) and a stiff-bristled scrub brush to clean the felt the best you can when moving between Wisconsin streams.

- 5. What should I do if I see something suspicious in Wisconsin waters that I think might be invasive?**

Answer: The best thing you can do is take a picture of the suspicious plant, animal or algae and email it to the River Alliance of Wisconsin (info@wisconsinrivers.org), or your local Wisconsin DNR biologist for identification. DNR biologist and invasive species reporting information can be found here: <http://dnr.wi.gov/topic/Invasives/report.html>.

Practice Clean Angling; Protect Wisconsin's Rivers from Invasives

Do you know when you are at risk of transporting invasive species between waterbodies? You pose the greatest threat when you use felt soles or travel out of state. Use the flow chart below to decide what measures you should take to prevent the spread of invasive species.



GOOD

CHECK, CLEAN, DRY

Inspect gear, clean off mud and plant material. Drain water. This is required by law before leaving any waterbody.



SCRUB

all equipment with tap water and a stiff brush



SPRAY

all equipment with a mild bleach solution (1 Tbsp bleach per gallon of water). Keep wet for 10 min.

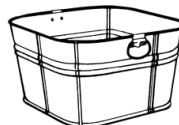
Does NOT apply to felt; does NOT kill New Zealand mudsnails!



SOAK

equipment with a mild bleach solution (1 Tbsp bleach in one gallon of water) for 10 minutes.

Does NOT kill New Zealand mudsnails!



FREEZE

equipment for 6 – 8 hours.



Dry

for at least 5 days before reuse, preferably in direct sunlight

Does NOT apply to felt!



BEST

For more information contact the River Alliance of Wisconsin at (608) 257-2424 or visit www.wisconsinrivers.org.