



Bayfield County Land & Water Conservation Dept.- Aquatic Invasive Species Project

Volume 4, Issue 2

FALL 2017

INSIDE THIS ISSUE:

- CBCW Results 2
- Student Science Research Symposium (SSRS) 3
- SSRS Photos 4
- Event Photos 5
- Volunteer Appreciation 6

Our 2017 Invader Crusaders

Ordinarily, an aquatic invasive plant or critter would adorn the front page of this newsletter. We are changing things to celebrate an exciting development. We nominated the Town of Barnes Aquatic Invasive Species Committee (TOBAISC) and the Friends of the Eau Claire Lakes Area (FOTECLA) for a state-level award, presented by the Invasive Plant Association of Wisconsin (IPAW). They received recognition! TOBAISC and FOTECLA each received a wooden plaque in the volunteer group category, identifying them as 2017 Invader Crusaders.

TOBAISC and FOTECLA collaborated by sharing financial resources, diverse backgrounds, and experience to move forward with two programs: the Barnes Aquatic Invasive Species Suction (BAISS) boat, and the Lake Ecology Education Program (LEEP). They developed these projects over several years



Photo credit: Seana Frint

to prepare future generations for their roles as lake stewards. The paragraph in the Lake Tides newsletter, supplied from our nomination form, read quote: "The Town of Barnes Aquatic Invasive Species Committee was the first organization in the region to research and build a Diver Assisted Suction Harvester (DASH) boat, with substantial funding from the Friends of the Eau Claire

Lakes Area. This allows for much more effective and efficient removal of invasive plant species in lakes and waterways. These two organizations also collaborated to develop the Lake Ecology Education Program (LEEP). Downloadable as a full curriculum from their website, LEEP has been used as a program for approximately thirty Drummond 7th graders each year. This program educates students about natural resource conservation, while integrating invasive species education." We presented the awards on September 19, 2017.



Photo credit: Seana Frint



CBCW Results and Grant Opportunities

Clean Boats Clean Waters (CBCW) programs have become much easier to implement. The DNR realizes the great importance and impact these programs have on preventing the spread of aquatic invasive species. Thus they have developed a streamlined and noncompetitive grant process to support a watercraft inspection program at your waterbody. Apply today!

You can find information on the simple application process online at <http://dnr.wi.gov/lakes/cbcw/>.

If you need help implementing a CBCW program, do not hesitate to contact the Bayfield County Land & Water Conservation Department. Applications are due to the Wisconsin Department of Natural Resources by December 10th, 2017.

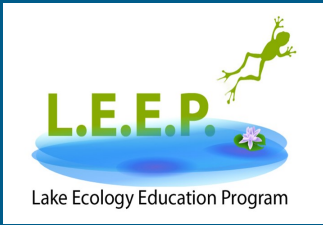
Here are the highlights from 2017 inspections throughout Bayfield County:

CBCW Program Location	Boats Inspected	People Educated	Hours Invested
Barnes Area Lakes	3,146	8,000	2,022
Cable Area Lakes	299	576	432
Lake Namakagon & Northland College	172+381	339+792	110+222
Lake Superior	2,336	5,185	1,511
Pike Chain / Delta Lake / Long Lake (Iron River)	1,991	4,618	1,392
TOTALS:	8,325	19,510	5,689

Landing Blitz 2017: Boaters received microfiber towels on 4th of July weekend at boat landings across the state. Below are participants at Tomahawk Lake in Bayfield County, Wisconsin.



Lake Ecology Education Program



“No child left on shore.”



The Student Science Research Symposium (SSRS)

BAYFIELD COUNTY LAND & WATER CONSERVATION DEPARTMENT - AQUATIC INVASIVE SPECIES PROJECT

A special thank you to all the agencies that made the Student Science Research Symposium possible! In attendance were: Bad River Natural Resource Department, Friends of the Center, National Park Service, Northern Great Lakes Visitor Center, Northwoods Cooperative Weed Management Area, Superior Rivers Watershed Association, U.S. Forest Service, & UW-Extension. Thank you!



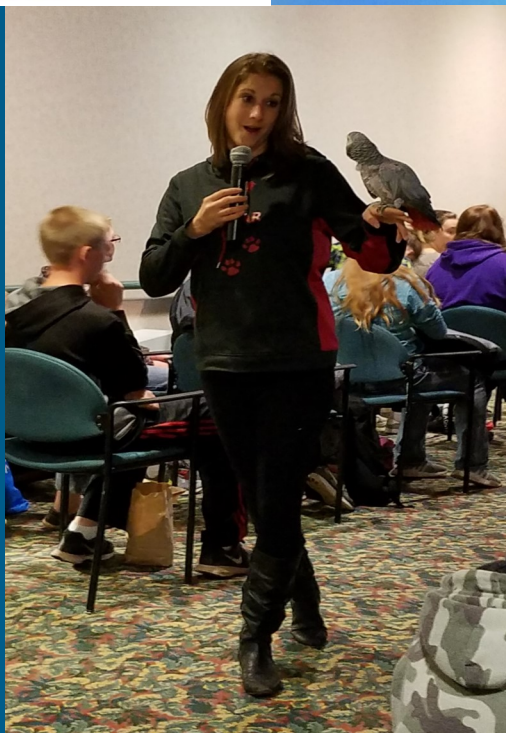
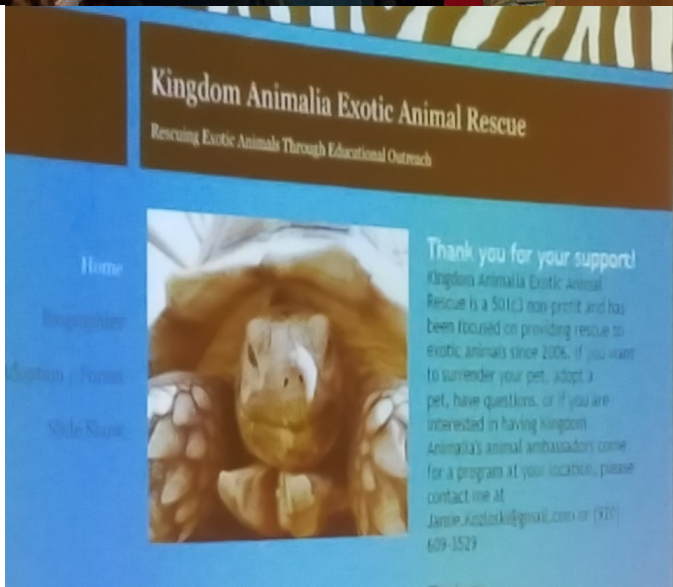
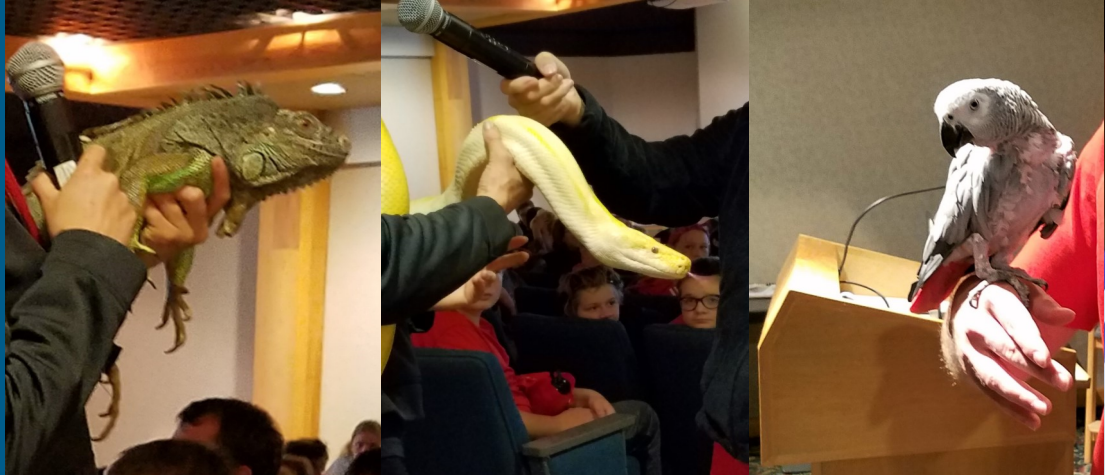
The Northern Great Lakes Visitor Center (NGLVC) and the Northwoods Cooperative Weed Management Area (NCWMA) has worked in partnership over the last two years on an event we call the Student Science Research Symposium. Susan Nelson, an Interpretive Services Specialist with the U.S. Forest Service, and Andy Teal, the Bayfield County

AIS Coordinator, Animalia Exotic Animal Rescue, headlined the event. She taught us about responsible pet ownership, how to care for these animals, and to research what to expect as owners. In the picture above, she shows students a unique rescue, a Burmese python named Butterscotch. Hands down he is the friendliest (and heaviest!) snake this AIS species ID, Great Lakes Early Detector Network and iNaturalist app use, leaf printing on bandanas, interacting with bats (thanks to USFS biologist Brian “Batman” Heeringa) and they learned how water moves through a watershed and how that affects environmental health. Jamie Kozloski, the Founder and Executive Director of Kingdom

worked together with other agencies to host this event. Over 100 teachers and students from Washburn Middle School and Our Lady of the Lake Catholic School in Ashland participated! Students engaged in hands-on activities such as invasive species ID, Great Lakes Early Detector Network and iNaturalist app use, leaf printing on bandanas, interacting with bats (thanks to USFS biologist Brian “Batman” Heeringa) and they learned how water moves through a watershed and how that affects environmental health. Jamie Kozloski, the Founder and Executive Director of Kingdom



Student Science Research Symposium



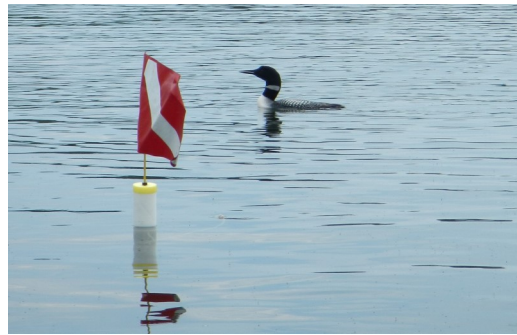
PREVENT THE SPREAD OF INVASIVE SPECIES IT'S THE LAW
PENALTIES MAY EXCEED \$2000

Before launching and before leaving YOU MUST:

- ✓ **INSPECT** boats, trailers, and equipment.
- ✓ **REMOVE** all attached aquatic plants and animals.
- ✓ **DRAIN** all water from boats, vehicles, and equipment.
- ✓ **NEVER MOVE** plants or live fish away from a waterbody.

STOP AQUATIC HITCHHIKERS!
Prevent the spread of invasive species. It's the law.

*Limited exceptions apply. Visit WWW.DNR.WI.GOV and search for "BOAT LAWS."



Knotweed Knockout Days



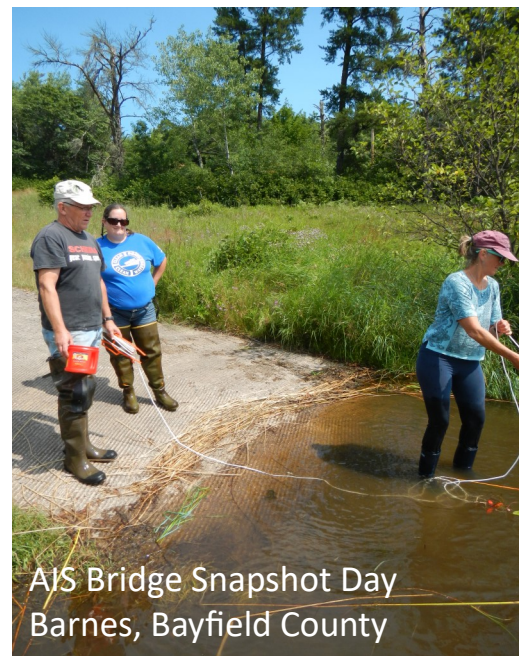
Lake Owen Yellow Iris Cutting



Early Detection Monitoring



Iron River Blueberry Festival



ATIS Bridge Snapshot Day
Barnes, Bayfield County



Intern Kyra Thornley hand pulling purple loosestrife

BAYFIELD COUNTY
 LAND & WATER
 CONSERVATION
 DEPARTMENT -
 AQUATIC
 INVASIVE
 SPECIES
 PROJECT





Bayfield County Land & Water
Conservation Department

615 2nd Avenue East
P.O. Box 126
Washburn WI 54891

Phone: 715-373-6167

Fax: 715-373-6127

Email: ATeal@bayfieldcounty.org

Hello everyone! It has certainly been a busy year, and we could not have done it without you. Below is a list of volunteers, board members, and participants we would like to thank. They step up each year to continue making the Bayfield County Aquatic Invasive Species Project a strong program model for Wisconsin. From Bayfield County Lakes Forum: Trish Bantle, Beth Kolling, Ellen Lafans; FOTECLA: Ted Eastlund, Gus Gustafson, Fred Haueter, Sue Jansen, John Kudlas, Cris Neff, Sally Pease*, Barb Romstad, Lee Wiesner. PCLA: Karen & Bart Austin, Jim Bender, Al & Ann Bochler, Jane Swenson. LLPOA: Nan Olson*, Tom Trianoski. NLA: Greg Dehring, Jim DeRoma, Jim Krueger*. Cable Lakes: Tammy Rasmussen, Sue Thurn. LOA: Ted Johnson. Bayfield County AIS Committee: Sarah Boles, Bill Bussey, Mike Defoe, Jeremy Oswald (and any name with an *). Thank you!



<https://www.facebook.com/pages/Bayfield-County-AIS-Project/486473981401597?fref=ts>

ID & Reporting tools:

List of Waterbodies with Invasive Species:

<http://dnr.wi.gov/lakes/invasives/AISByWaterbody.aspx>

Reporting New Sightings:

Great Lakes Early Detection Network - www.ibis.colostate.edu/gledn/

App available - <http://apps.bugwood.org/mobile/gledn.html>

View Maps of Invasive Species Locations:

Great Lakes Indian Fish and Wildlife Commission - <http://maps.glifwc.org/>

Learn About Lakes:

WI DNR Lakes Page - <http://dnr.wi.gov/lakes/lakepages/> (essentially the old yellow Lakes book now available online)

Get updates on lake happenings around the state <http://lakes-l.blogs.govdelivery.com/>

Species Specific Info:

Phragmites - www.greatlakesphragmites.net

Purple Loosestrife - http://www.seagrant.umn.edu/ais/purpleloosestrife_info

Japanese Knotweed - <http://www.kingcounty.gov/environment/animalsAndPlants/noxious-weeds/weed-identification/invasive-knotweeds/japanese-knotweed.aspx>

Eurasian Watermilfoil and Curly leaf Pondweed - <http://dnr.wi.gov/topic/invasives/fact>

All Other Invasive Species:

WI DNR - <http://dnr.wi.gov/topic/invasives/>

WI Sea Grant - <http://www.seagrant.wisc.edu/home/Topics/InvasiveSpecies.aspx>

Control Options - <http://mipncontroldatabase.wisc.edu/>