

ADDENDUM B - Subject Property Photos



A. View of Subject Property Facing Northeast



B. View of Typical Subject Topography

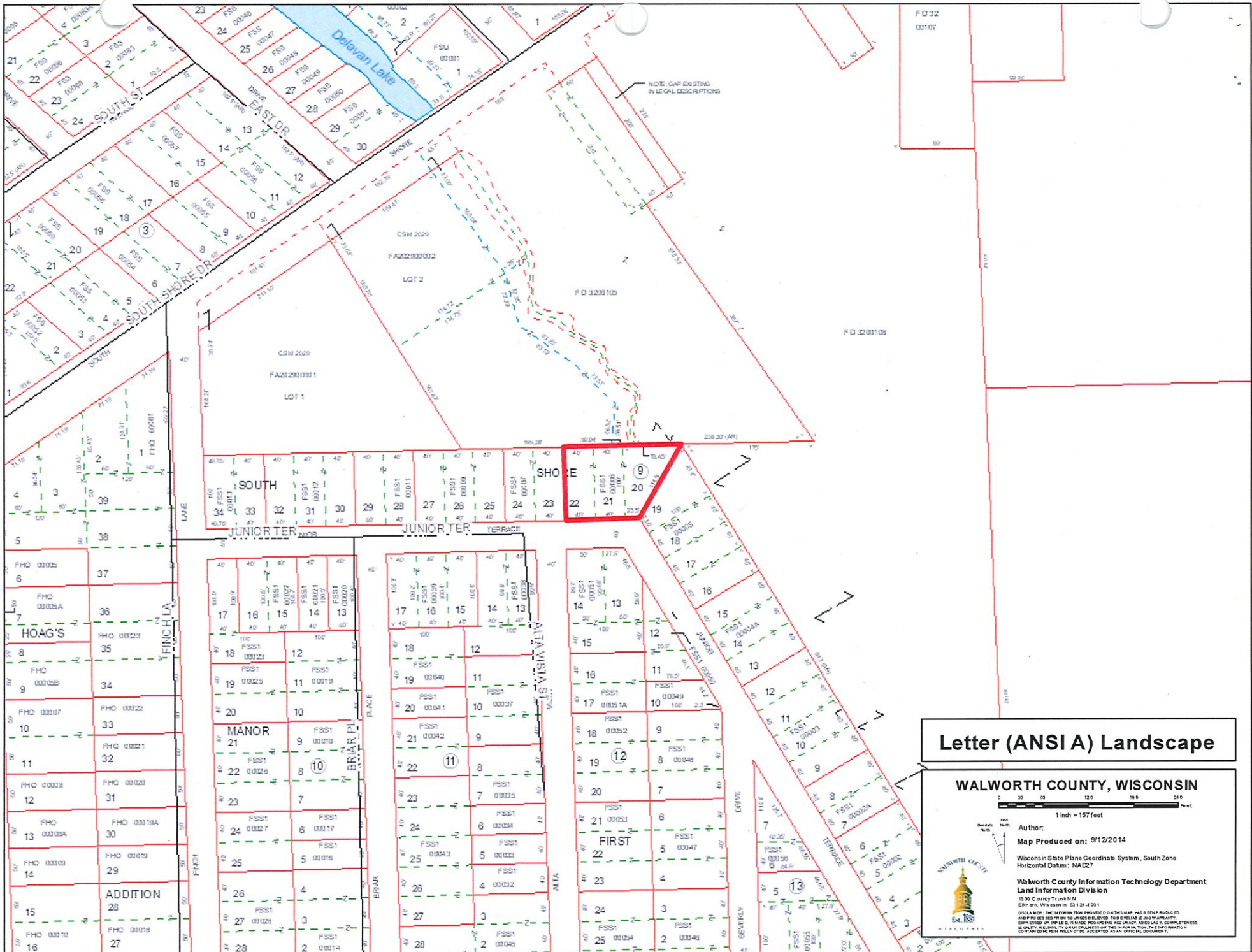
ADDENDUM B - Subject Property Photos



C. View of Junior Terrace Facing West



D. View of Alta Vista Drive Facing South



Letter (ANSI A) Landscape

WALWORTH COUNTY, WISCONSIN

0 30 60 120 180 240 feet
1 inch = 157 feet

Author:
Map Produced on: 9/12/2014
Wisconsin State Plane Coordinate System, South Zone
Horizontal Datum: NAD83

**Walworth County Information Technology Department
Land Information Division**
1500 County Trunk N
Elkhart, Wisconsin 53121-1001

DISCLAIMER: THE INFORMATION PROVIDED ON THIS MAP HAS BEEN PREPARED AND PROVIDED FOR YOUR INFORMATION ONLY. THE USER ASSUMES ALL LIABILITY FOR ANY AND ALL USES OF THIS INFORMATION. THE USER ASSUMES ALL LIABILITY FOR ANY AND ALL USES OF THIS INFORMATION. THE USER ASSUMES ALL LIABILITY FOR ANY AND ALL USES OF THIS INFORMATION.





Letter (ANSI A) Landscape

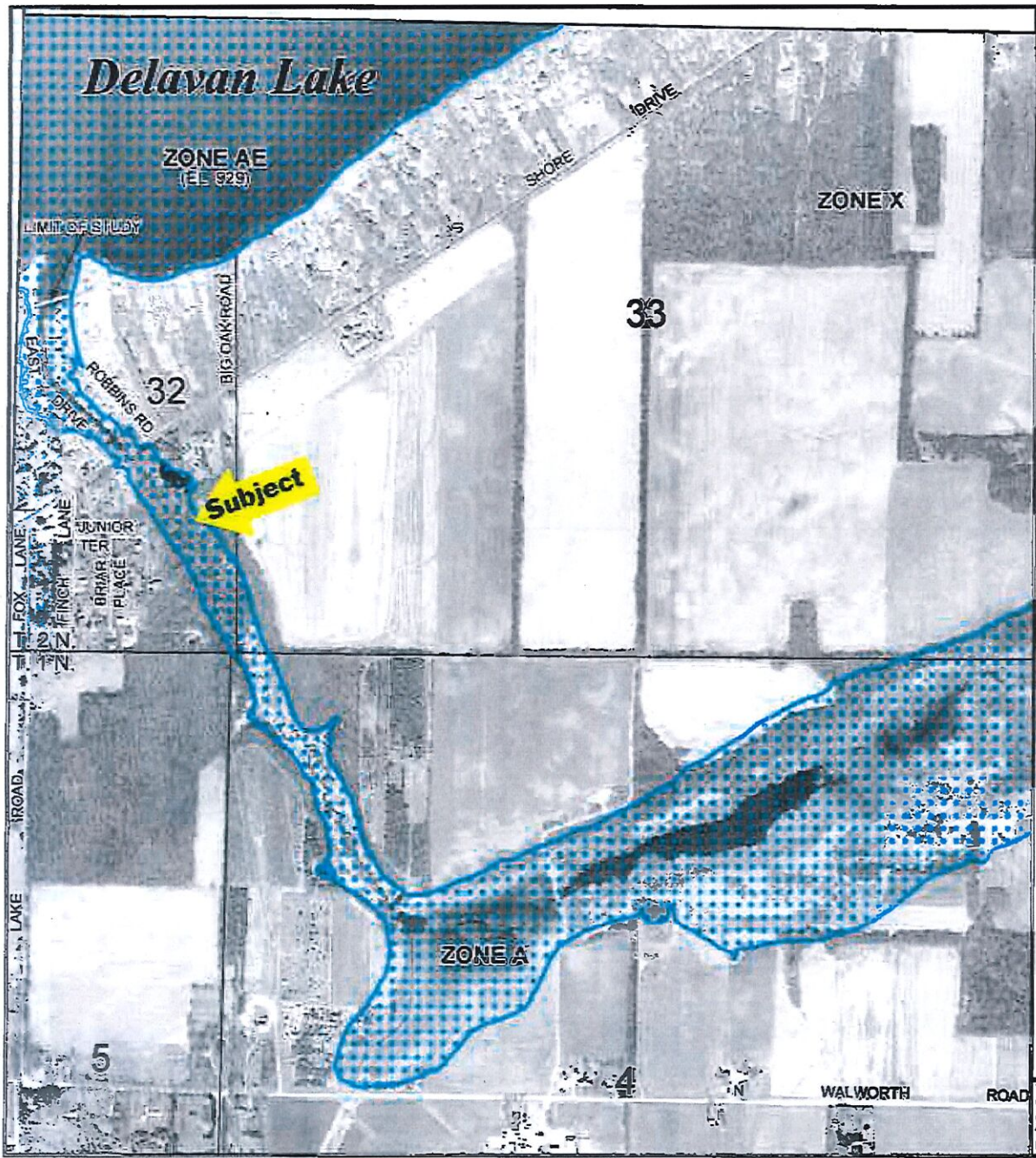
WALWORTH COUNTY, WISCONSIN



Author:
 Map Produced on: 8/12/2014
 Wisconsin State Plane Coordinate System, South Zone
 Horizontal Datum: NAD83
 Walworth County Information Technology Department
 DIVISION
 500 COURT TRAIL
 WAUKESHA, WISCONSIN 53151-1051
 AND PLEASE CONTACT THE WALWORTH COUNTY INFORMATION TECHNOLOGY DEPARTMENT AT (920) 251-2111 FOR MORE INFORMATION.
 WALWORTH COUNTY INFORMATION TECHNOLOGY DEPARTMENT



WALWORTH COUNTY INFORMATION TECHNOLOGY DEPARTMENT
 DIVISION
 500 COURT TRAIL
 WAUKESHA, WISCONSIN 53151-1051
 AND PLEASE CONTACT THE WALWORTH COUNTY INFORMATION TECHNOLOGY DEPARTMENT AT (920) 251-2111 FOR MORE INFORMATION.
 WALWORTH COUNTY INFORMATION TECHNOLOGY DEPARTMENT



MAP SCALE 1" = 1000'



NFIP

PANEL 0305D

FIRM
FLOOD INSURANCE RATE MAP
WALWORTH COUNTY,
WISCONSIN
AND INCORPORATED AREAS

PANEL 305 OF 500
 (SEE MAP INDEX FOR FIRM PANEL LAYOUT)

CONTAINS:

COMMUNITY	NUMBER	PANEL	SUFFIX
WALWORTH COUNTY	550462	0305	D
DELAVAN, CITY OF	550463	0305	D
FONTANA ON GENEVA LAKE, VILLAGE OF	550592	0305	D
WILLIAMS BAY, VILLAGE OF	550594	0305	D

Notice to User: The Map Number shown below should be used when placing map orders; the Community Number shown above should be used on insurance applications for the subject community.



MAP NUMBER
55127C0305D

EFFECTIVE DATE
OCTOBER 2, 2009

Federal Emergency Management Agency

This is an official copy of a portion of the above referenced flood map. It was extracted using F-MIT On-Line. This map does not reflect changes or amendments which may have been made subsequent to the date on the title block. For the latest product information about National Flood Insurance Program flood maps check the FEMA Flood Map Store at www.msc.fema.gov

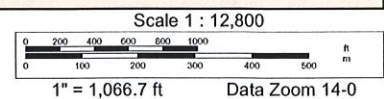
ADDENDUM J - Location Map of Subject Property



Data use subject to license.

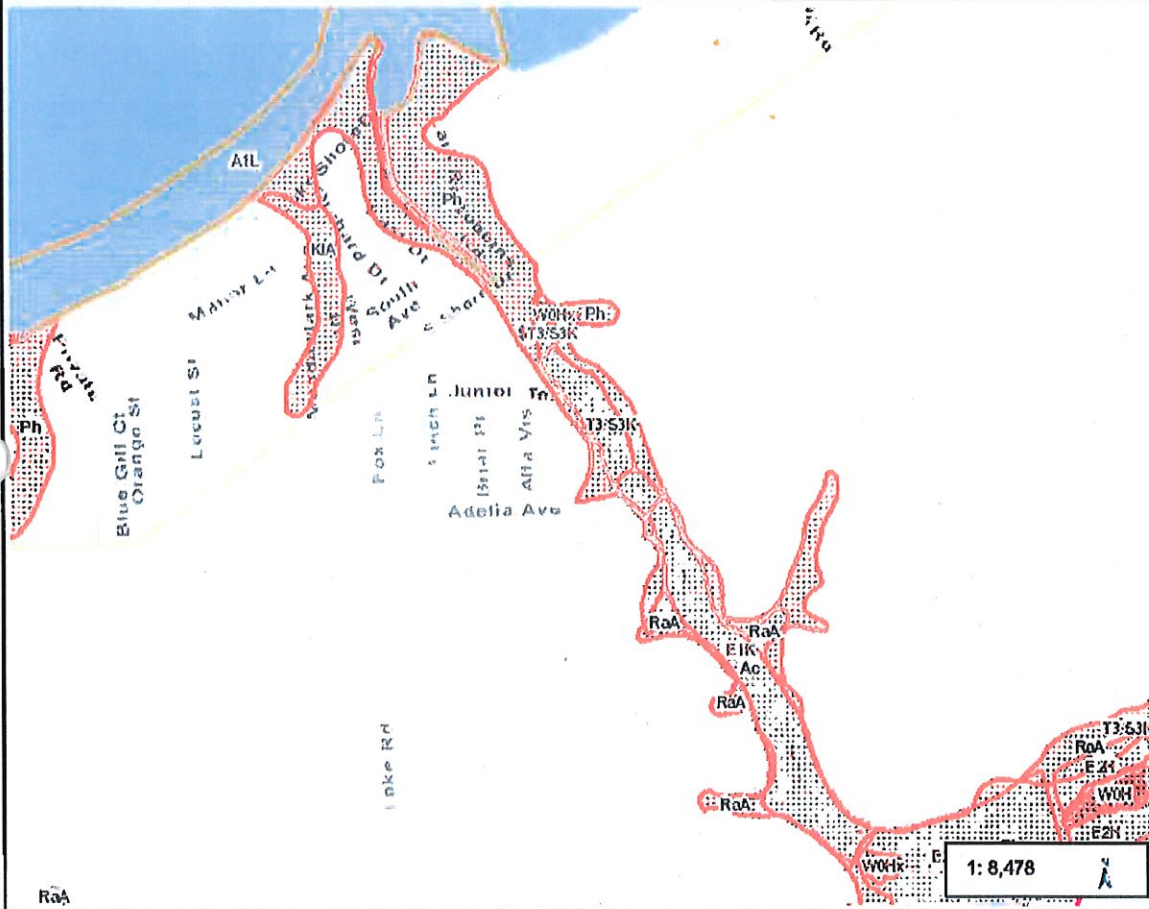
© DeLorme. DeLorme Street Atlas USA® 2013.

www.delorme.com





Surface Water Data Viewer Map



Legend

Wetland Class Points

- Detrimed pond
- Excavated pond
- Filled excavated pond
- Filled/draind wetland
- Wetland too small to delineate

Filled Points

Wetland Class Areas

- Wetland
- Upland

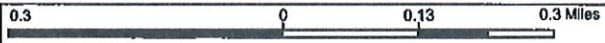
Filled Areas

- NRCS Wetspots
- Wetland Indicators

Rivers and Streams

Open Water

Notes



NAD_1983_HARN_Wisconsin_TM
© Latitude Geographics Group Ltd.

DISCLAIMER: The information shown on these maps has been obtained from various sources, and are of varying age, reliability and resolution. These maps are not intended to be used for navigation, nor are these maps an authoritative source of information about legal land ownership or public access. No warranty, expressed or implied, is made regarding accuracy, applicability for a particular use, completeness, or legality of the information depicted on this map. For more information, see the DNR Legal Notices web page: <http://dnr.wis.gov/org/legal/>