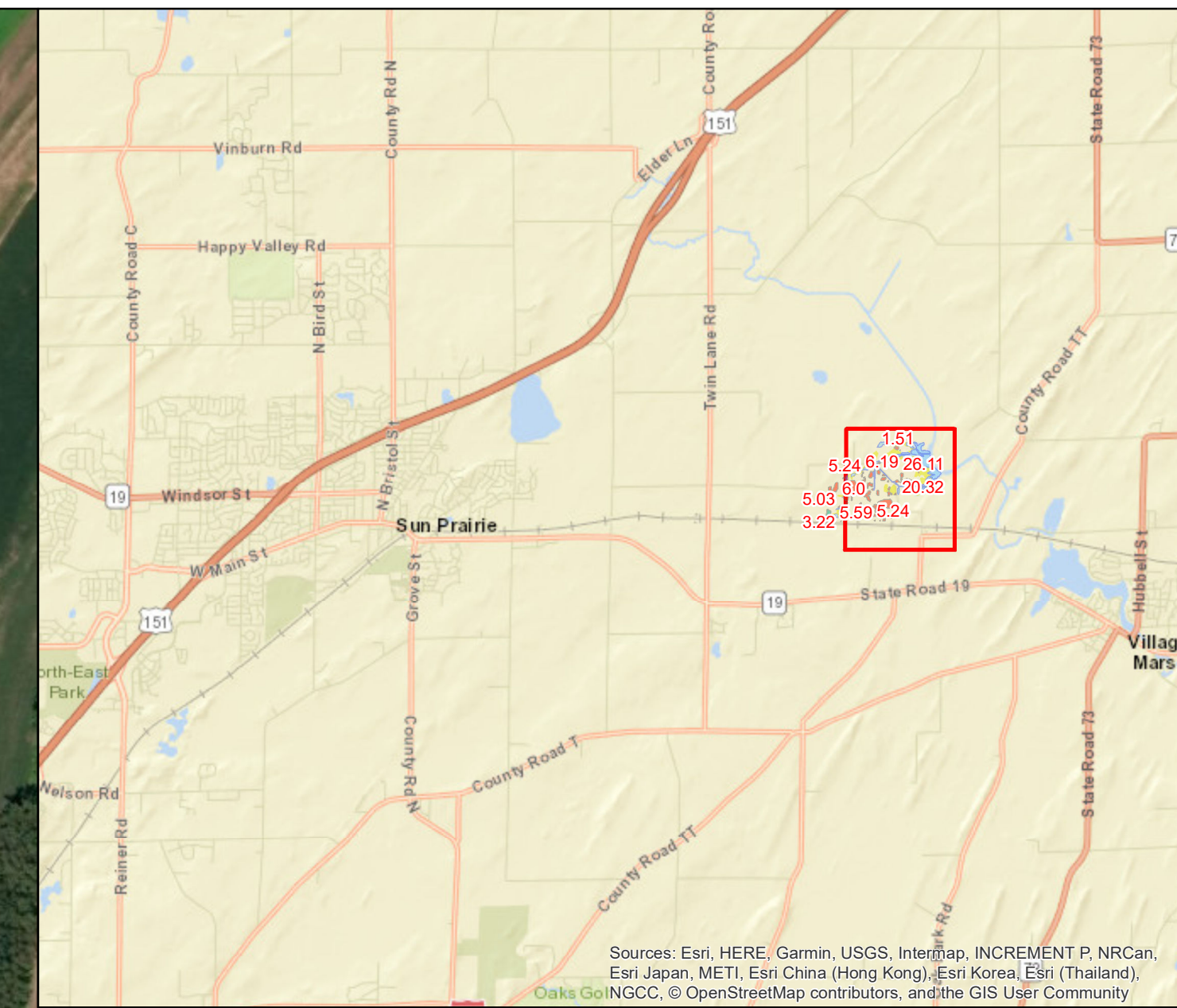


Tri-County W.O.W. Phragmites, and Invasive Cattails Extent Feb 2020

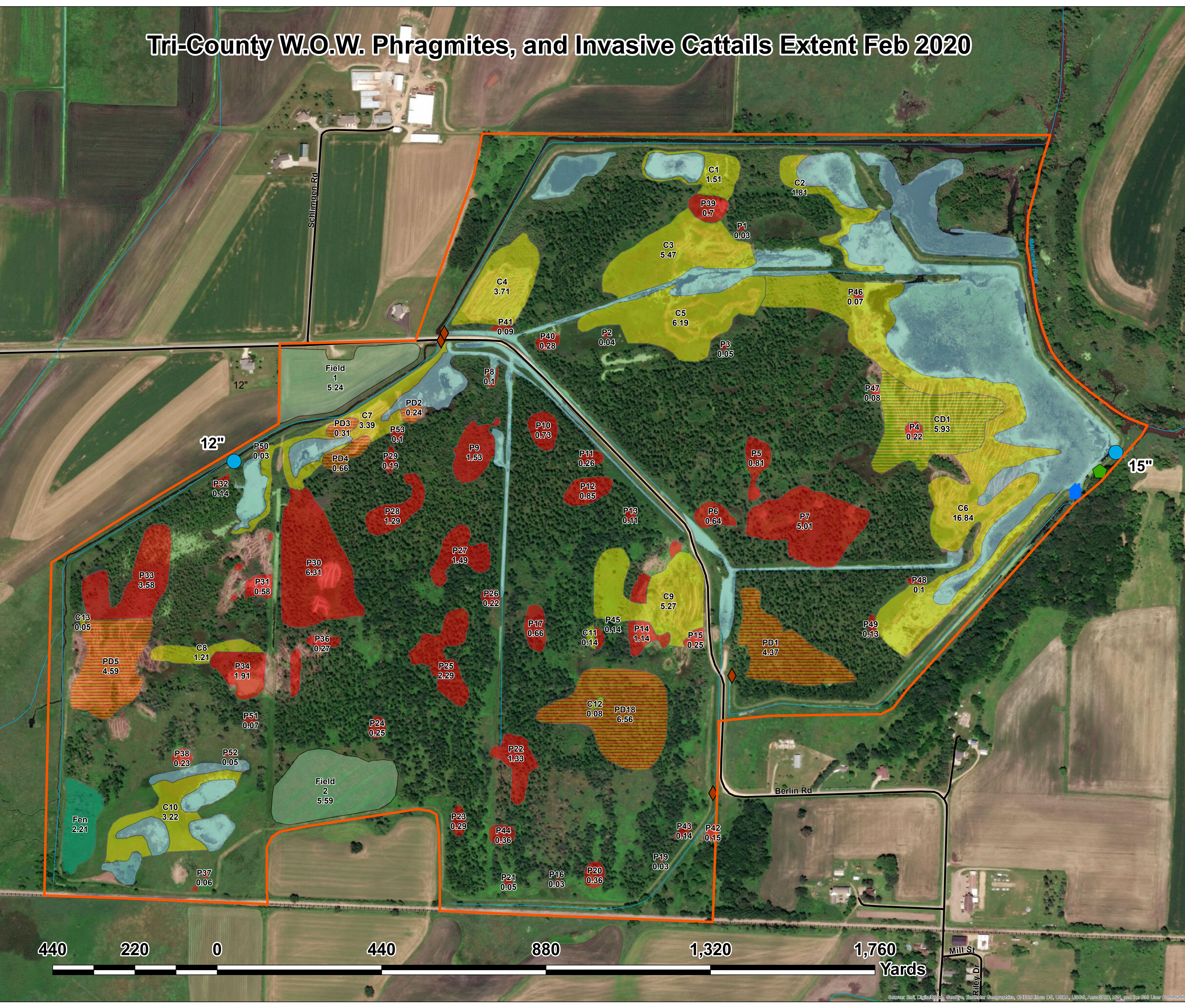


Acreages

Invasive Cattails	48.88
Cattails Degraded (<50%)	5.93
Fen	2.21
Open Water	45.51
Phragmites	35.82
Phragmites Degraded (<50%)	16.72

Legend

- Property Boundary
- Water Control Structure
- Gate
- Pump House
- Swale
- Cattails
- Fen
- Open Water
- Phragmites
- Phragmites Degraded by Treatment to < 50% Coverage
- Cattails Degraded by Treatment to < 50% Coverage



Cartography By Zach Hassler
608-228-5670