

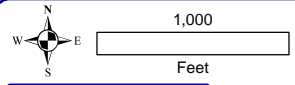
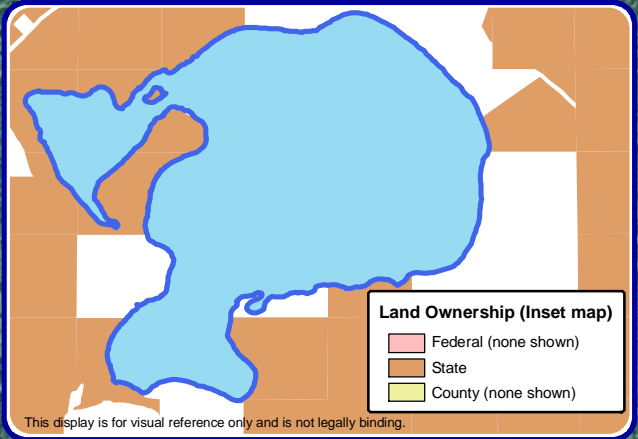
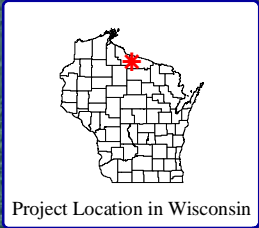
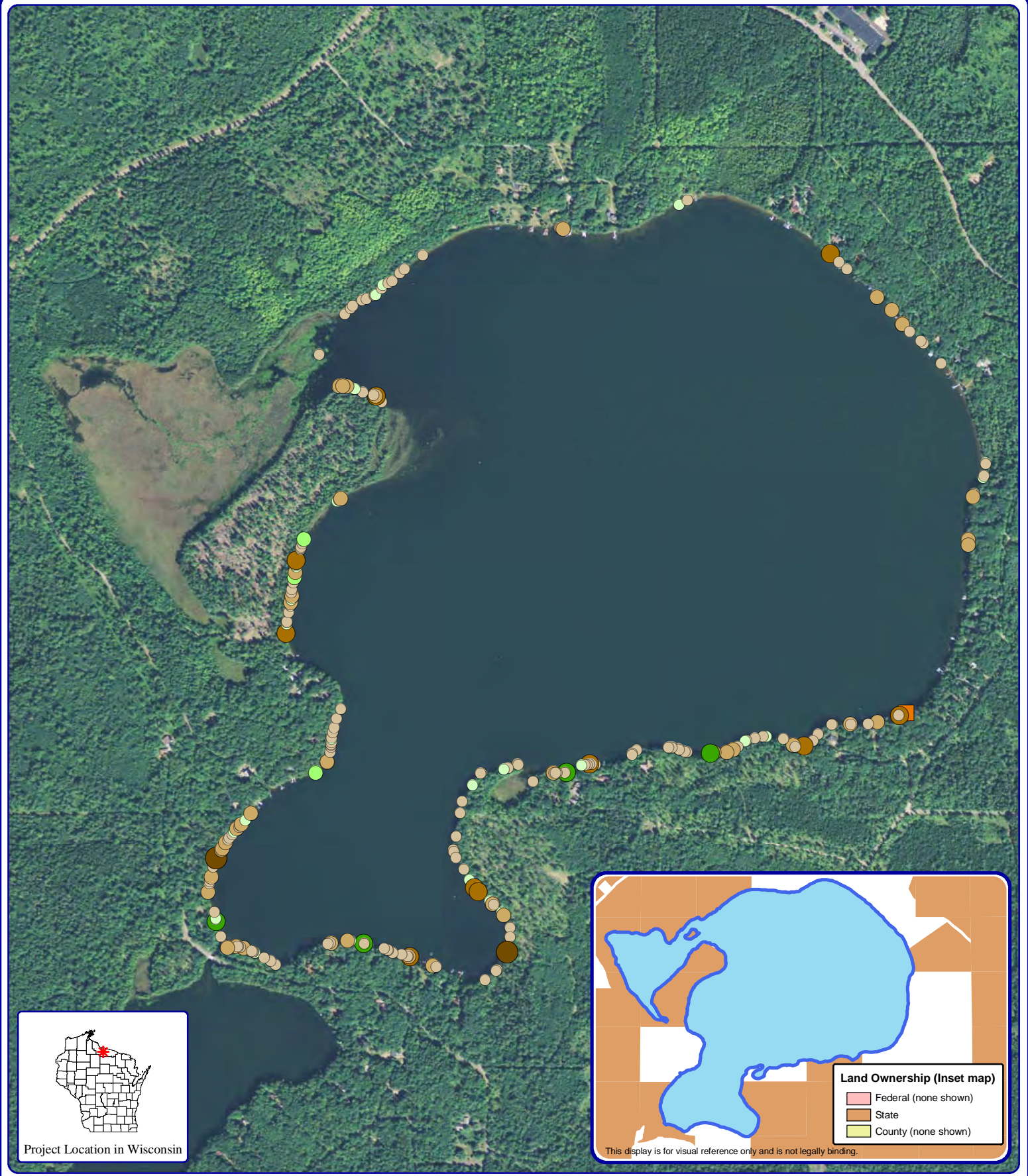
Onterra LLC
 Lake Management Planning
 815 Prosper Road
 De Pere, WI 54115
 920.338.8860
 www.onterra-eco.com

Sources:
 Hydro, State Land and Roads: WDNR
 Bathymetry: WDNR, digitized by Onterra
 Aquatic Plant Survey: Onterra, 2013
Map date: October 14, 2014
 Filename: Clear_ShorelandCondition_2014.mxd

Legend

- Natural/Undeveloped
- Developed-Natural
- Developed-Semi-Natural
- Developed-Unnatural
- Urbanized
- Seawall
- Masonry/Metal/Wood
- Rip-Rap

Clear Lake - Map 1
 Manitowish Waters
 Chain of Lakes
 Vilas County, Wisconsin
Shoreland Condition

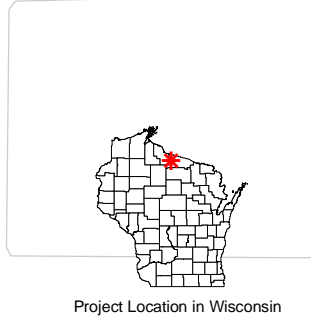
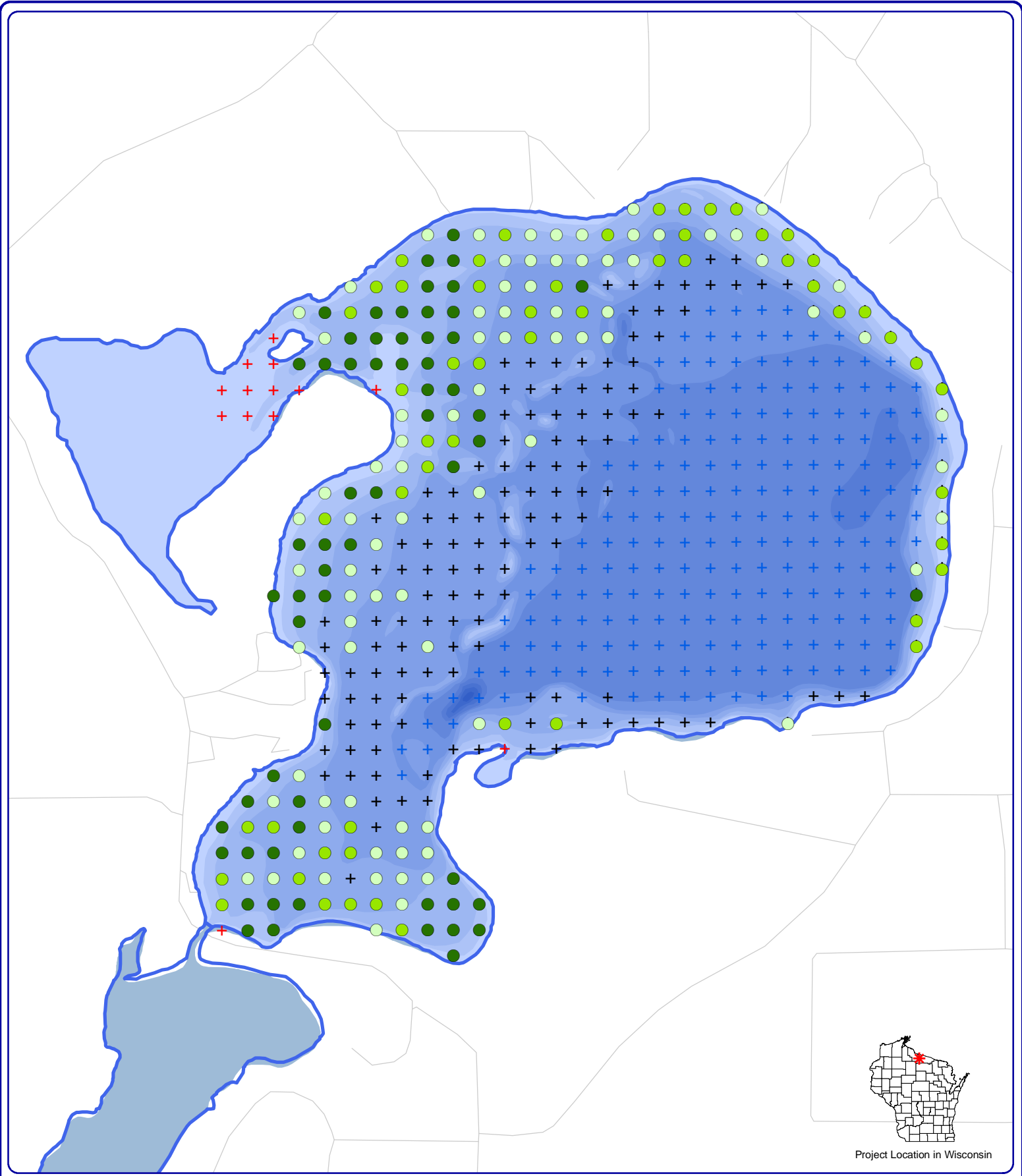


Onterra LLC
 Lake Management Planning
 815 Prosper Road
 De Pere, WI 54115
 920.338.8860
 www.onterra-eco.com

Sources:
 Hydro: WDNR
 Aquatic Plants: Onterra, 2013
 Orthophotography: NAIP, 2013
Map date: October 6, 2014
 Filename: Map2_Clear_CWH_2014.mxd

2-8 Inch Pieces		8+ Inch Pieces		Cluster of Pieces	
○ No Branches	○ Minimal Branches	○ No Branches	○ Minimal Branches	■ No Branches (none)	■ Minimal Branches (none)
○ Moderate Branches	○ Full Canopy	○ Moderate Branches	○ Full Canopy (none)	■ Moderate Branches	■ Full Canopy (none)

Clear Lake - Map 2
 Manitowish Waters
 Chain of Lakes
 Vilas County, Wisconsin
Coarse Woody Habitat

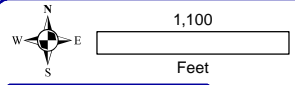
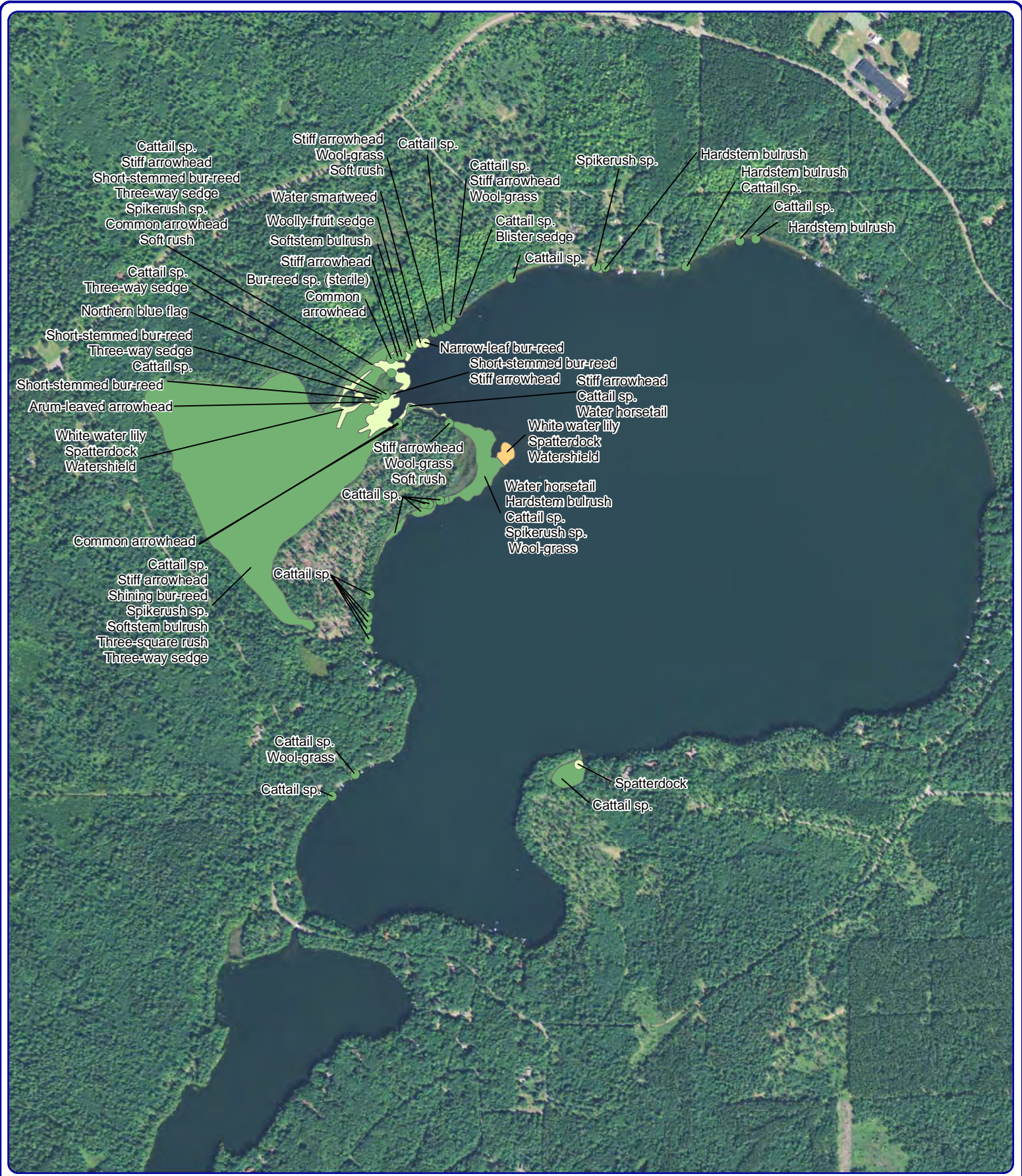


Onterra LLC
 Lake Management Planning
 815 Prosper Road
 De Pere, WI 54115
 920.338.8860
 www.onterra-eco.com

Sources:
 Roads and Hydro: WDNR
 Map Date: December 16, 2014
 Filename: Clear_TREPI_2013.mxd

- Legend**
- 2013 Point-intercept Survey**
- Total Rake Fullness = 1
 - Total Rake Fullness = 2
 - Total Rake Fullness = 3
 - + No Vegetation
 - + Non-navigable
 - + Deep

Clear Lake - Map 3
 Manitowish Waters
 Chain of Lakes
 Vilas County, Wisconsin
Aquatic Plant Distribution



Onterra LLC
 Lake Management Planning
 815 Prosper Road
 De Pere, WI 54115
 920.338.8860
 www.onterra-eco.com

Sources:
 Hydro: WDNR
 Aquatic Plants: Onterra, 2013
 Orthophotography: NAIP, 2010
Map date: Month Day Year
 Filename: Clear_Map4_Comm_2013.mxd



Project Location in Wisconsin

Legend

- | Small Plant Communities | Large Plant Communities |
|--|--------------------------------|
| ● Emergent | Emergent |
| ● Floating-leaf | Floating-leaf |
| ● Mixed Floating-leaf & Emergent | Mixed Floating-leaf & Emergent |

Map 4
Clear Lake
 Vilas County, Wisconsin
Aquatic Plant Communities