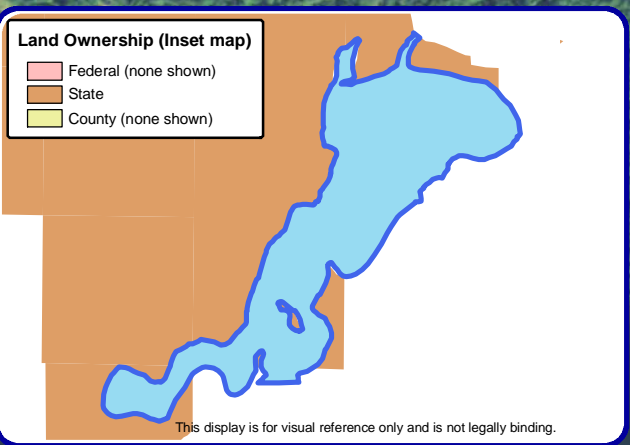
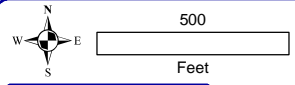


Project Location in Wisconsin



This display is for visual reference only and is not legally binding.



Onterra LLC
 Lake Management Planning
 815 Prosper Road
 De Pere, WI 54115
 920.338.8860
 www.onterra-eco.com

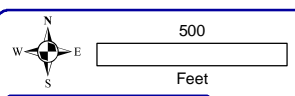
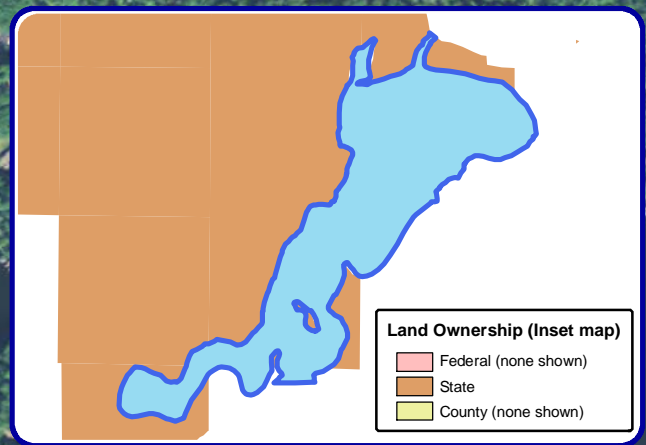
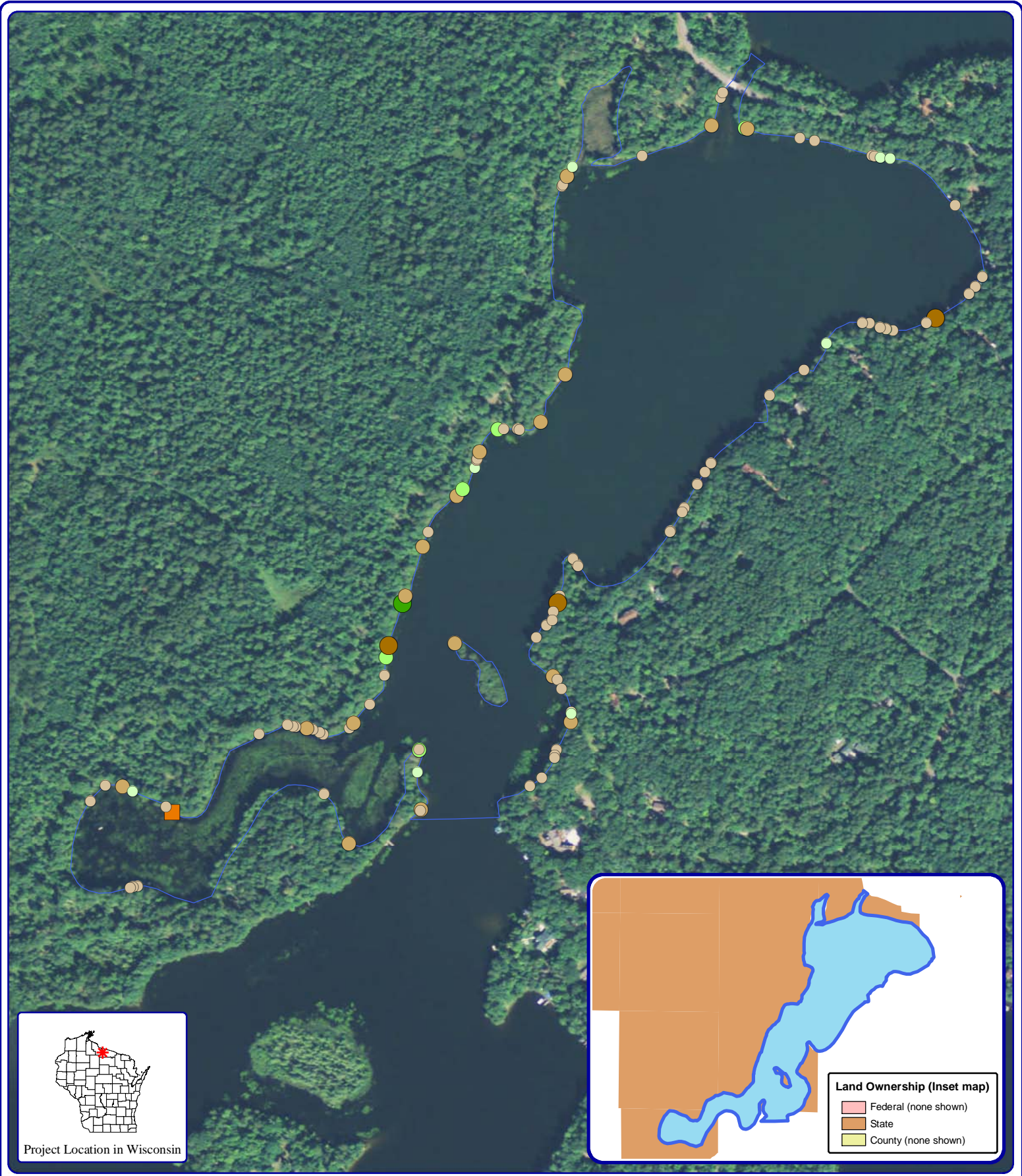
Sources:
 Hydro, State Land and Roads: WDNR
 Bathymetry: WDNR, digitized by Onterra
 Aquatic Plant Survey: Onterra, 2013
 Map date: October 14, 2014
 Filename: Fawn_ShorelandCondition_2014.mxd

Legend

- Natural/Undeveloped
- Developed-Natural
- Developed-Semi-Natural
- Developed-Unnatural
- Urbanized

- Seawall**
- Masonary/Metal/Wood
 - Rip-Rap

Fawn Lake - Map 1
 Manitowish Waters
 Chain of Lakes
 Vilas County, Wisconsin
Shoreland Condition



Onterra LLC
 Lake Management Planning
 815 Prosper Road
 De Pere, WI 54115
 920.338.8860
 www.onterra-eco.com

Sources:
 Hydro: WDNR
 Aquatic Plants: Onterra, 2013
 Orthophotography: NAIP, 2013
Map date: October 6, 2014
 Filename: Fawn_CWH_2014.mxd

2-8 Inch Pieces

- No Branches
- Minimal Branches
- Moderate Branches
- Full Canopy (none)

8+ Inch Pieces

- No Branches
- Minimal Branches
- Moderate Branches
- Full Canopy (none)

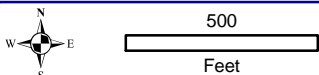
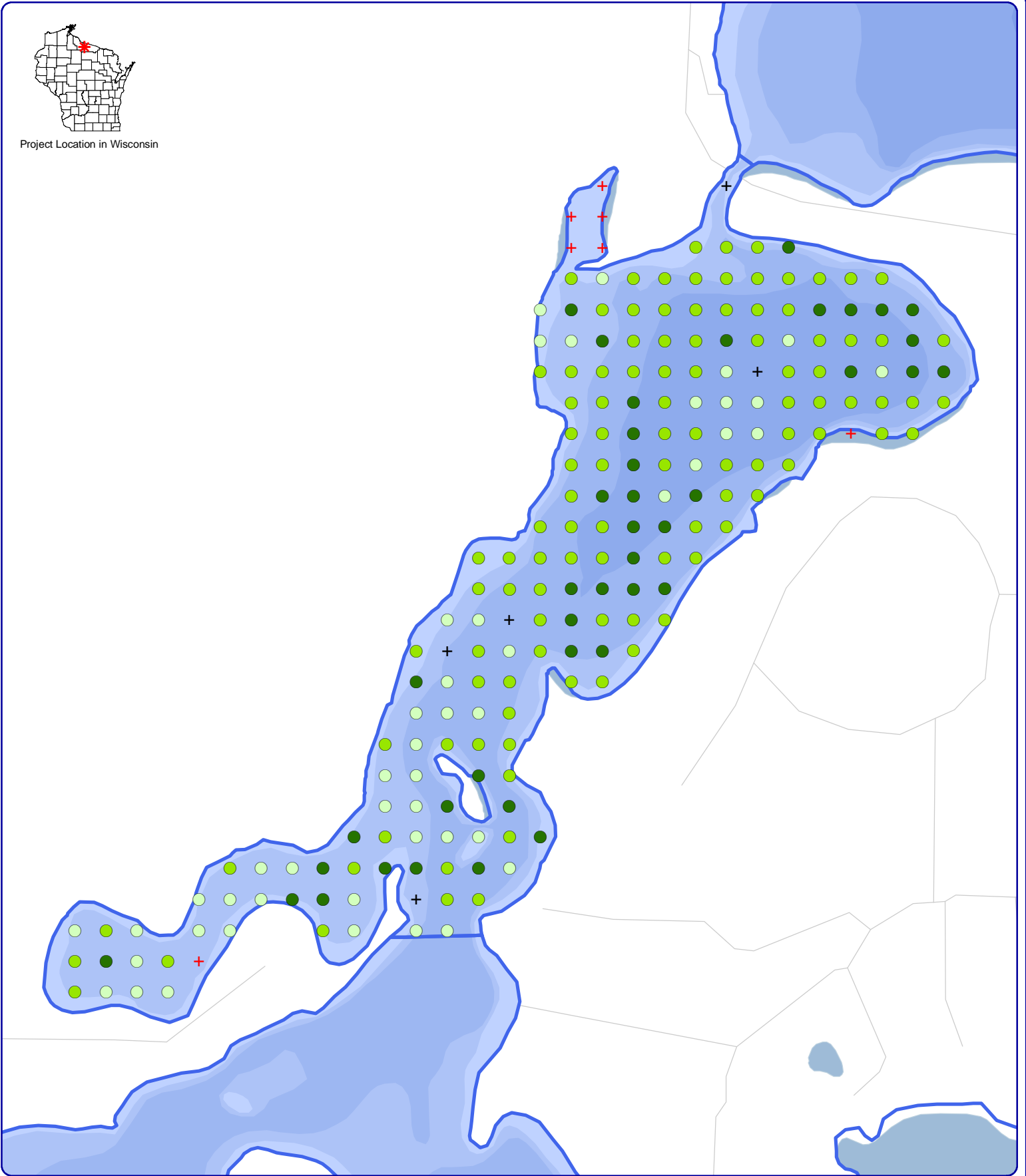
Cluster of Pieces

- No Branches (none)
- Minimal Branches (none)
- Moderate Branches
- Full Canopy (none)

Fawn Lake - Map 2
Manitowish Waters
Chain of Lakes
 Vilas County, Wisconsin
Coarse Woody Habitat



Project Location in Wisconsin



Onterra LLC
Lake Management Planning
815 Prosper Road
De Pere, WI 54115
920.338.8860
www.onterra-eco.com

Sources:
Roads and Hydro: WDNR
Map Date: December 16, 2014
Filename: Fawn_TREPI_2013.mxd

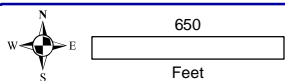
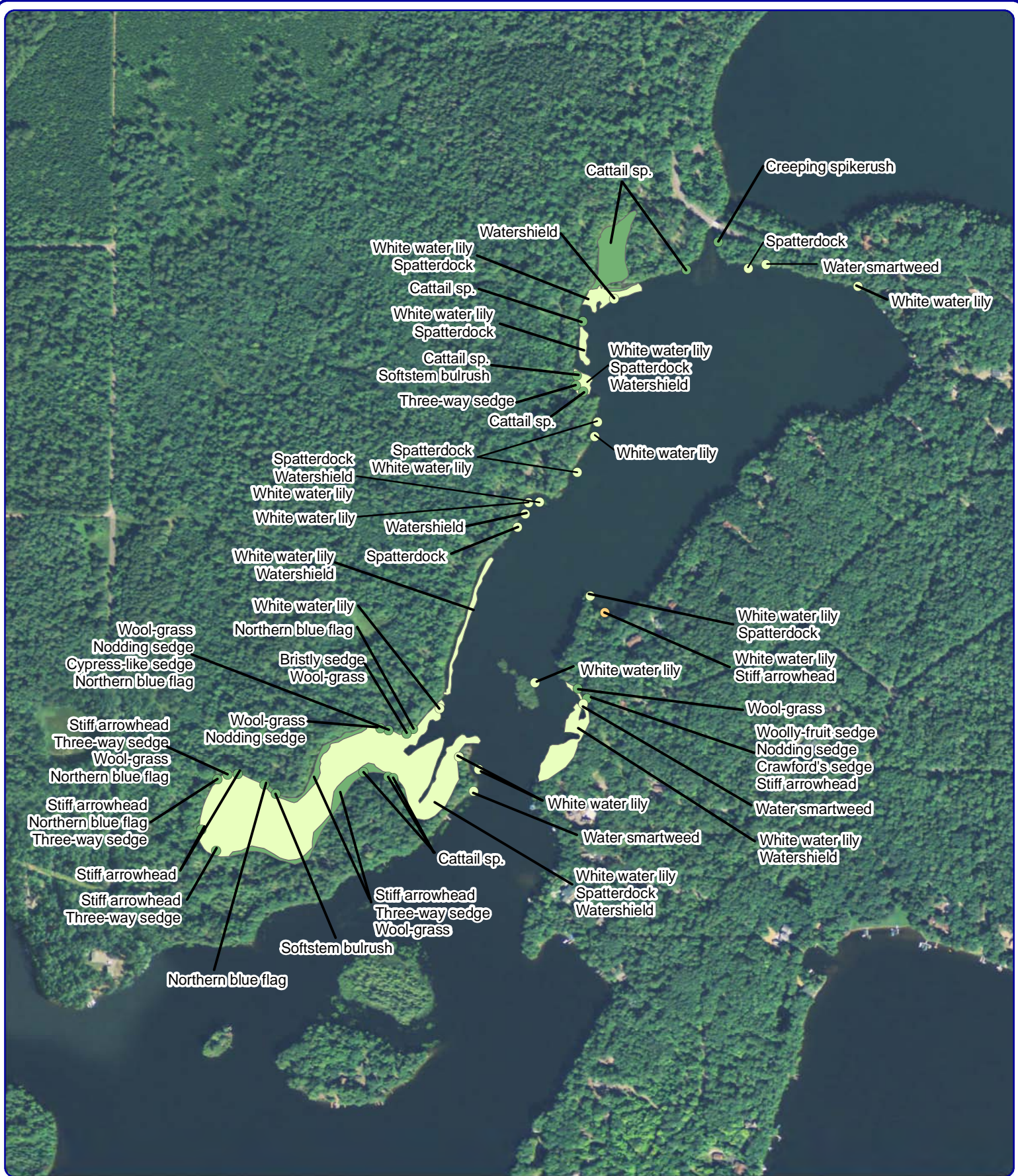
Legend

2013 Point-intercept Survey

- Total Rake Fullness = 1
- Total Rake Fullness = 2
- Total Rake Fullness = 3
- + No Vegetation
- + Non-navigable
- + Deep

Fawn Lake - Map 3
Manitowish Waters
Chain of Lakes
Vilas County, Wisconsin

Aquatic Plant Distribution



Onterra LLC
 Lake Management Planning
 815 Prosper Road
 De Pere, WI 54115
 920.338.8860
 www.onterra-eco.com

Sources:
 Hydro: WDNR
 Aquatic Plants: Onterra, 2013
 Orthophotography: NAIP, 2010
Map date: January 29, 2014
 Filename: Fawn_Comm_2013.mxd



Project Location in Wisconsin

Legend

Small Plant Communities

- Emergent
- Floating-leaf
- Mixed Floating-leaf & Emergent

Large Plant Communities

- ✶ Emergent
- ✶ Floating-leaf
- ✶ Mixed Floating-leaf & Emergent

Map 4

Fawn Lake
 Vilas County, Wisconsin

Aquatic Plant Communities