

Project Location in Wisconsin

Onterra LLC
 Lake Management Planning
 815 Prosper Road
 De Pere, WI 54115
 920.338.8860
 www.onterra-eco.com

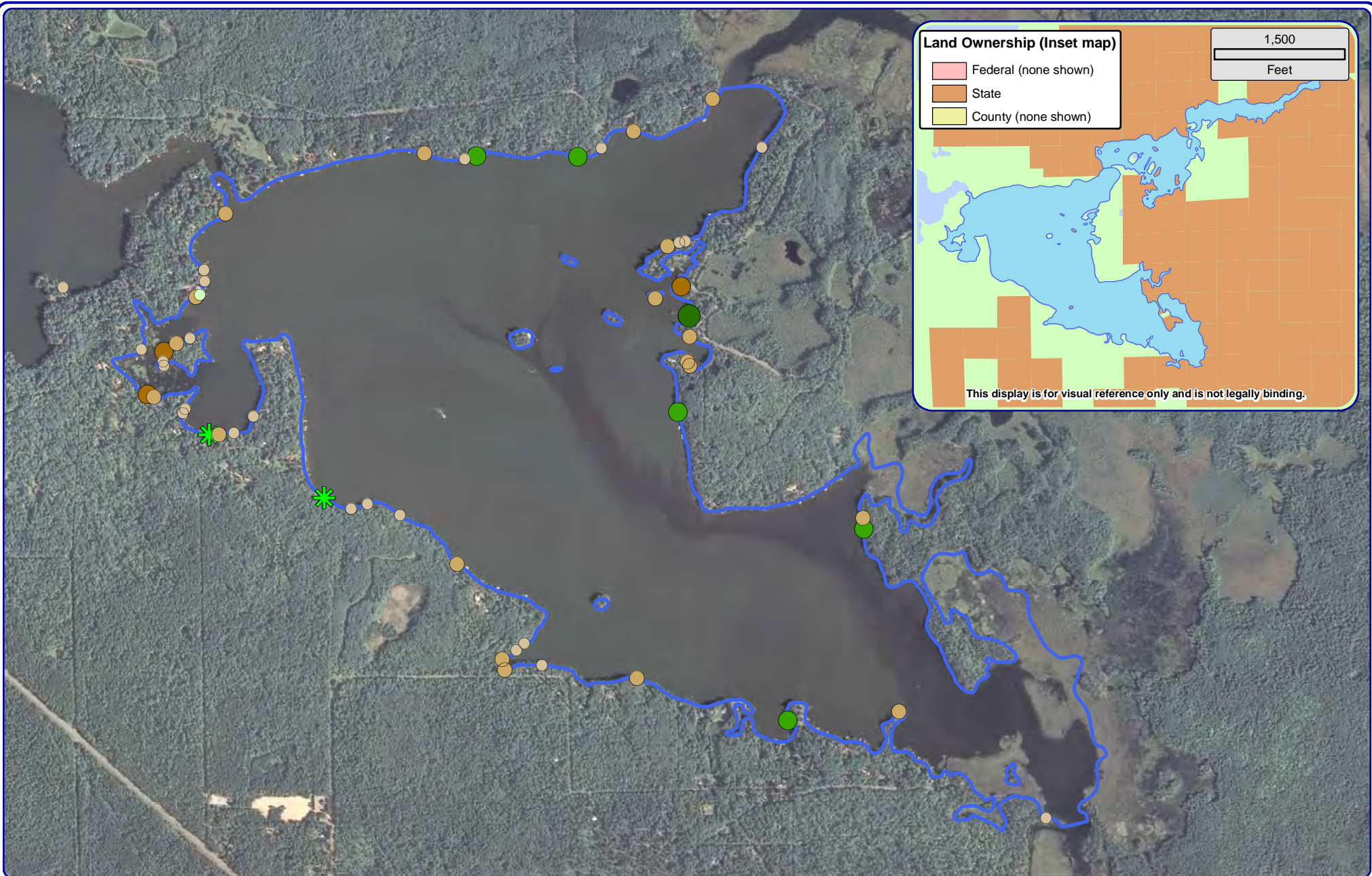
Sources:
 Shoreline Assessment: Onterra, 2012
 Orthophotography: NAIP, 2010
 Map Date: September 24, 2013
 Filename: Island_Map1_SA_2012.mxd

- Natural/Undeveloped
- Developed-Natural
- Developed-Semi-Natural
- Developed-Unnatural
- Urbanized

Legend

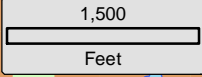
- Seawall
- Masonary/Metal/Wood
- Rip-Rap

Island Lake - Map 1
 Manitowish Waters
 Chain of Lakes
 Vilas County, Wisconsin
Shoreline Condition

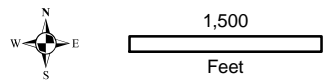


Land Ownership (Inset map)

- Federal (none shown)
- State
- County (none shown)



This display is for visual reference only and is not legally binding.



Onterra LLC
 Lake Management Planning
 815 Prosper Road
 De Pere, WI 54115
 920.338.8860
 www.onterra-eco.com

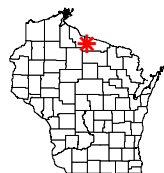
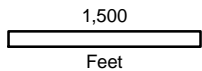
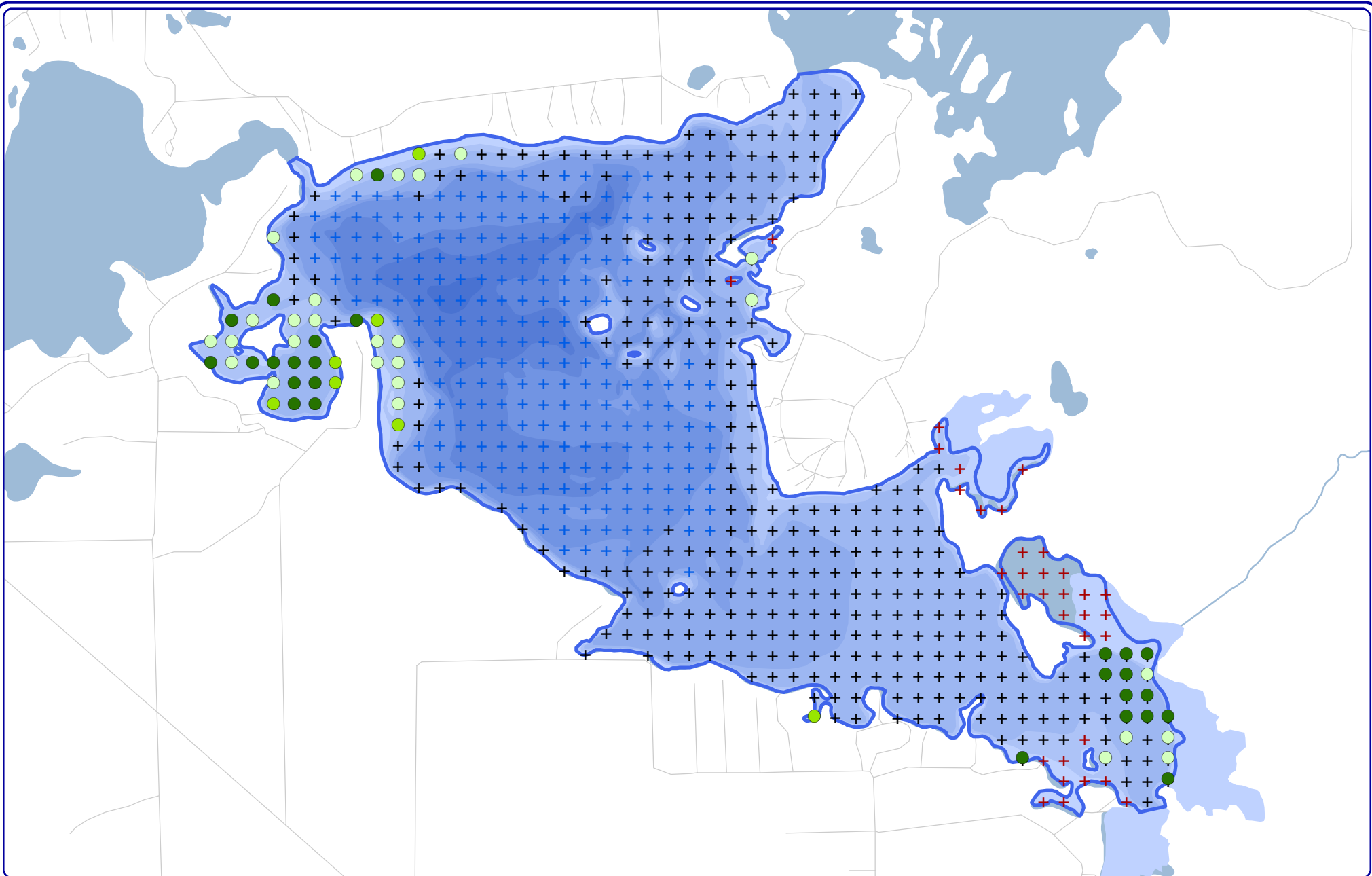
Sources:
 Shoreline Assessment: Onterra, 2012
 Orthophotography: NAIP, 2010
 Map Date: September 24, 2013
 Filename: Island_Map2_CWH_2012.mxd



Legend

- 2-8 Inches, No Branches
- >8 Inches, No Branches
- 2-8 Inches, Minimal Branches
- >8 Inches, Minimal Branches (none)
- 2-8 Inches, Moderate Branches
- >8 Inches, Moderate Branches
- 2-8 Inches, Full Canopy (none)
- >8 Inches, Full Canopy
- Cluster

Island Lake - Map 2
 Manitowish Waters
 Chain of Lakes
 Vilas County, Wisconsin
Course Woody Habitat



Project Location in Wisconsin

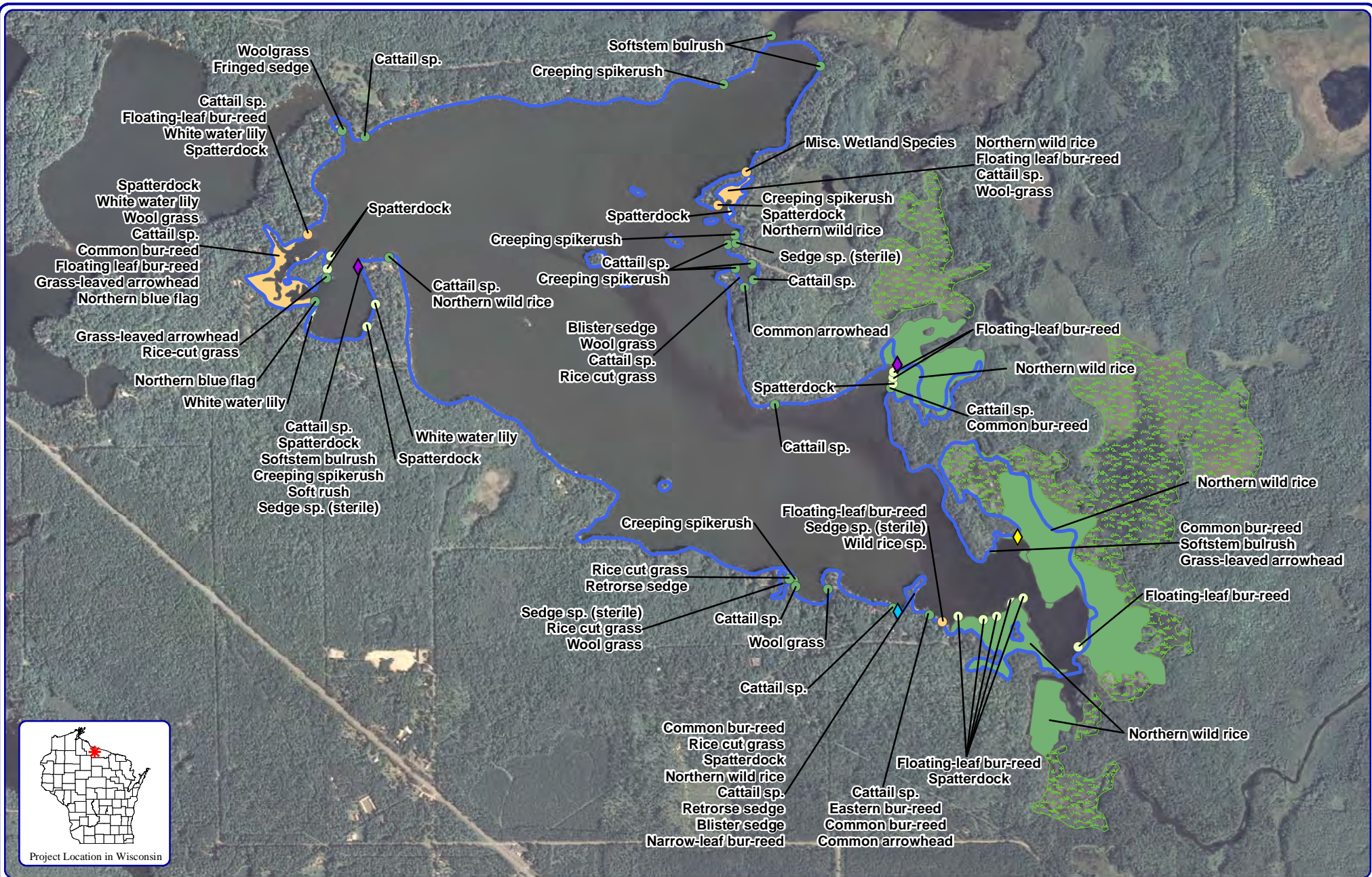
Onterra LLC
 Lake Management Planning
 815 Prosper Road
 De Pere, WI 54115
 920.338.8860
 www.onterra-eco.com

Sources:
 Aquatic Plant Survey: WDNR, 2011
 Roads and Hydro: WDNR
 Map Date: September 24, 2013
 Filename: Island_Map3_TREPI_2012.mxd

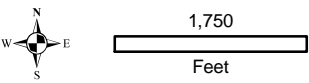
Legend
 2011 Point-intercept Survey

- + No Vegetation
- + Too Deep (Below Max Depth of Plants)
- + Non-navigable
- Total Rake Fullness = 1
- Total Rake Fullness = 2
- Total Rake Fullness = 3

Island Lake - Map 3
 Manitowish Waters
 Chain of Lakes
 Vilas County, Wisconsin
Aquatic Plant Distribution



Project Location in Wisconsin



- Small Plant Communities**
- Emergent
 - Floating-leaf
 - Mixed Floating-leaf & Emergent

- Legend**
- Large Plant Communities**
- Emergent
 - Floating-leaf
 - Mixed Floating-leaf & Emergent
 - Adjacent Wetland Habitat

- Exotic Plant Communities**
- ◆ Purple loosestrife
 - ◆ Pale Yellow Iris
 - ◆ Common forget-me-not

Onterra LLC
 Lake Management Planning
 815 Prosper Road
 De Pere, WI 54115
 920.338.8860
 www.onterra-eco.com

Sources:
 Aquatic Plants: Onterra, 2012
 Orthophotography: NAIP, 2010
 Map date: December 12, 2012
 Filename: Island_Map4_Comm_2012.mxd

Island Lake - Map 4
 Manitowish Waters
 Chain of Lakes
 Vilas County, Wisconsin
**Emergent & Floating-leaf
 Aquatic Plant Communities**